



128 726
registered returnees



53%
are female



7 279
are breastfeeding



2 416
are pregnant



66%
are children

201 379

returnees in Chad
(estimation)

240 000

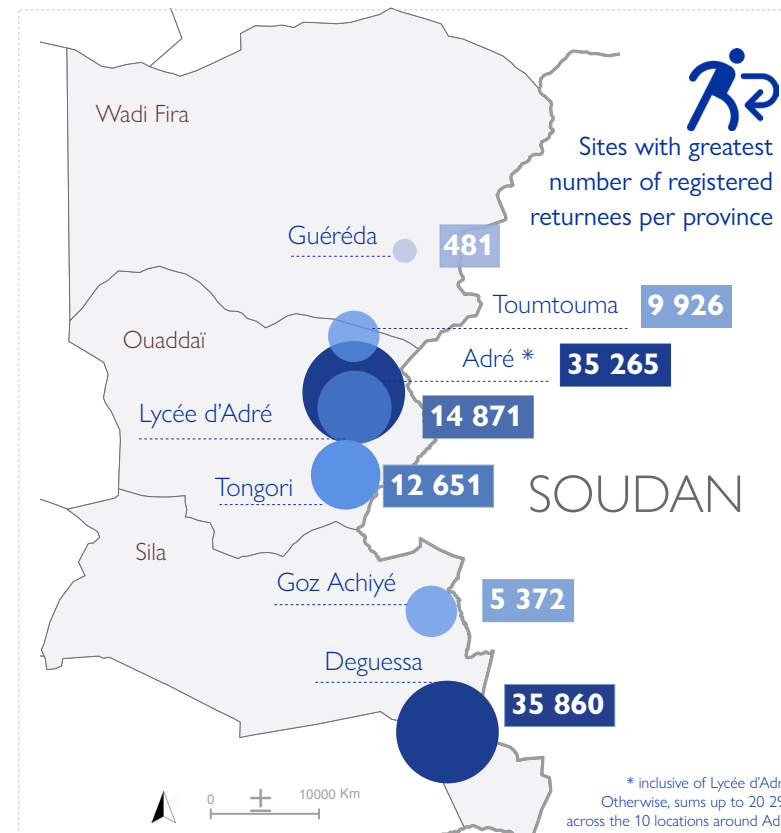
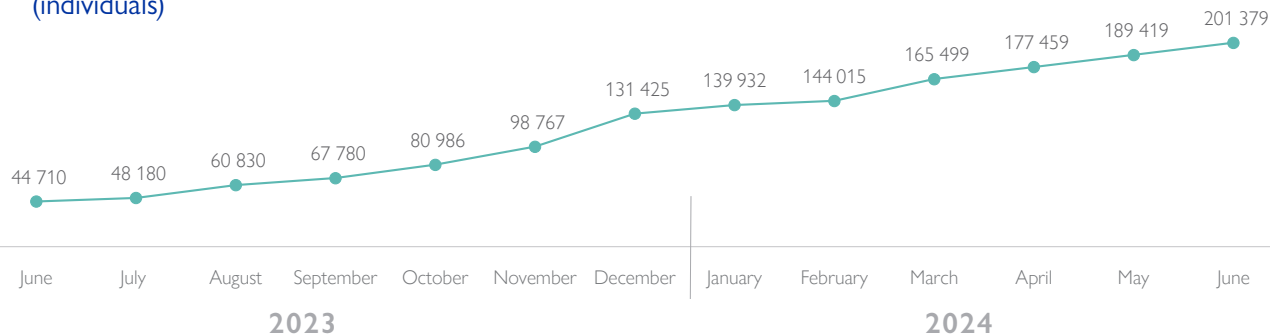
returnees in Chad by
december 2024



52 locations
with identified
returnees across
3 provinces



ESTIMATED NUMBER OF RETURNÉES
(individuals)



HIGHLIGHTS

Over 780,000 people have crossed into Chad since the onset of the crisis in Sudan. IOM estimates that 201,379 among them are Chadian returnees and expects this number to rise to 240,000 through to December 2024. This is due to ongoing conflict and food insecurity in Darfur, owing to the current suspension of the humanitarian corridor between Chad and Darfur.

BACKGROUND

Returnees are Chadian nationals who were living in Sudan and have been displaced back to their home country where they lack the resources to rebuild their lives. Returnees are living either in displacement sites or within host communities. They are in urgent need of food, water, sanitation and hygiene, shelter, household items, health, and protection. IOM is the lead agency for the returnee response, in close coordination with the Government of Chad, local authorities, UN agencies, and local and international NGOs.

PRIORITY NEEDS



Humanitarian assistance
(WASH, Shelter, NFI,
Protection)



Resilience and
livelihoods



Displacement
Tracking data

USD 35 345 000

USD 10 000 000

USD 1 500 000

SINCE THE BEGINNING OF THE CRISIS THE IOM SUPPORTED:



EMERGENCY ASSISTANCE PROVIDED TO DATE

IOM is leading life-saving assistance for Chadian returnees from Sudan via multisectoral interventions.

IOM HAS SUPPORTED:

- 113,558 returnees with multisectoral assistance in 27 sites across Ouaddaï and Sila provinces since the beginning of the crisis.
- 3,788 transitional shelters benefitting over 21,000 of the most vulnerable returnees and is constructing an additional 1,200 shelters in the returnee sites of Degoussa in Sila and Tongori in Ouaddaï.
- 89,078 returnees by creating 10 new boreholes (thermic, solar-powered, and manual), 639 latrines, and distributing 7,115 essential WASH kits.
- 7,879 households (41,624 individuals) to meet their most essential needs through multipurpose cash assistance.
- 6,171 households (47,221 individuals) to carry out essential household tasks through non-food items distributions.
- In collaboration with WFP, IOM finalized a one-month ration food distribution for all returnees in Ouaddai Province reaching over 60,000 returnees total.

REPORTING PERIOD UPDATES

HUMANITARIAN COORDINATION

As the lead agency for the humanitarian response for returnees, IOM continues to coordinate with national, international, and government partners (CNARR, local authorities) to deliver vital services to vulnerable returnees in the east of Chad. IOM continues to support and coordinate the delivery of WASH, food, protection, health, shelter, NFI, and education assistance in returnee sites by national and international partners including UNICEF, UNFPA, WFP, Concern Worldwide, INTERSOS, COOPI, ACTED, Help Tchad, and the Chadian Red Cross.

- IOM supports the monthly distribution of food assistance, both in-kind and cash-based, by WFP to over 110,000 returnees in Ouaddaï and Sila. IOM is also managing the first Humanitarian Hub in Farchana, where it hosts UN agencies, INGOs, and NGOs operating in Chad and Sudan.

DISPLACEMENT DATA & KNOWLEDGE SHARING

IOM's Displacement Tracking Matrix (DTM) is a leading tool to monitor and analyse displacement flows. IOM DTM teams, including CNARR agents, locally recruited and trained enumerators, are deployed across Sila and Ouaddaï provinces on an ongoing basis to identify and register vulnerable returnee households, including newly arrived households as well as households in remote locations not previously identified. IOM's data on displacement and needs feeds knowledge sharing within the humanitarian community to coordinate and target lifesaving assistance to those in need. Biometric registration is ongoing in Sila in Degoussa, in order to update and better identify the returnees currently living in the Degoussa.

- Through a newly installed registration centre at the Adre High School located adjacent to the UNHCR registration centre, IOM has registered an average of 210 returnee households weekly to enable more targeted rapid humanitarian assistance.
- IOIM has just completed the first round of biometric registration at the Degoussa returnee site.

RESILIENCE AND POST-EMERGENCY

IOM is developing its intervention in support of the longer-term resilience and recovery of Chadian returnees and the communities hosting them.

- IOM has provided kits for returnees in Tongori to build bricks to upgrade their shelters, which improves their dignity and resilience, enhances their skills, and strengthens support networks within the community. In total, 400 of the most vulnerable households are targeted during the first phase of this activity, in particular those that lost their shelters due to the series of fires in Tongori in March and April 2024.
- IOM has preidentified community-based projects in collaboration with local authorities, host communities and returnees in Degoussa. The projects were identified through focus group discussions with the stakeholders and beneficiaries and aim to improve the livelihoods and economic opportunities of the communities by building a market, stores, and community mills.

TOTAL REGISTERED RETURNEES AS OF 18 JUNE 2024 I

Total number of households: 24 130

Total number of individuals: 128 726

PROVINCE	DÉPARTEMENT	SOUS-PRÉFECTURE	VILLAGE/ LOCATION	# HOUSEHOLDS	# INDIVIDUALS	PROVINCE	DÉPARTEMENT	SOUS-PRÉFECTURE	VILLAGE/ LOCATION	# HOUSEHOLDS	# INDIVIDUALS
Ouaddai	Assoungaha	Adré	Lycee d'Adré	2038	14971	Sila	Kimiti	Mogororo	Deguessa Site	6867	35860
Ouaddai	Assoungaha	Adré	Tongori	2016	12651	Sila	Kimiti	Mogororo	Goz Achiye	1038	5372
Ouaddai	Assoungaha	Molou	Toumtouma	2327	9926	Sila	Kimiti	Moudeïna	Awinrado	1025	3154
Ouaddai	Assoungaha	Adré	Nil	652	4484	Sila	Tissi	Tissi	Kalma	613	2424
Ouaddai	Assoungaha	Adré	Guilané	552	3735	Sila	Kimiti	Adé	Adé Mour	431	2282
Ouaddai	Assoungaha	Adré	Hayal Chati	362	2947	Sila	Kimiti	Mogororo	Goz Saffrah	506	2093
Ouaddai	Assoungaha	Adré	Teleha	397	2784	Sila	Kimiti	Mogororo	Hile Hissen	378	1828
Ouaddai	Assoungaha	Molou	Ben Wadienne	519	2545	Sila	Kimiti	Moudeïna	Koloye	289	1319
Ouaddai	Assoungaha	Molou	Kawa	450	2135	Sila	Kimiti	Mogororo	Andressa	209	1090
Ouaddai	Assoungaha	Adré	Amkharouba 3	256	1831	Sila	Tissi	Tissi	Saraf bourgou	275	901
Ouaddai	Assoungaha	Molou	Tchoukia	383	1670	Sila	Kimiti	Mogororo	Mogororo 2	174	785
Ouaddai	Assoungaha	Molou	Borota	376	1583	Sila	Kimiti	Moudeïna	Habila	107	557
Ouaddai	Assoungaha	Adré	Adré Nord	191	1423	Sila	Kimiti	Mogororo	Telassa	100	540
Ouaddai	Assoungaha	Adré	Amkharouba 1	188	1307	Sila	Kimiti	Moudeïna	Moudeïna	76	277
Ouaddai	Assoungaha	Molou	Goundoguin	229	1015	Sila	Kimiti	Mogororo	Dogdoré	20	156
Ouaddai	Assoungaha	Molou	Amanta	209	985	Sila	Kimiti	Moudeïna	Toundoussa	39	152
Ouaddai	Assoungaha	Molou	Midjiguilta	261	903	Total Sila				12 147	58 790
Ouaddai	Assoungaha	Adré	Amkharouba 2	135	878	PROVINCE	DÉPARTEMENT	SOUS-PRÉFECTURE	VILLAGE/ LOCATION	# HOUSEHOLDS	# INDIVIDUALS
Ouaddai	Assoungaha	Molou	Djzomé	209	647	Wadi Fira	Dar Tama	Guéréda	Boukoulom	67	481
Ouaddai	Assoungaha	Adré	Hachaba	86	559	Total Wadi Fira				67	481
Ouaddai	Assoungaha	Adré	Zouhour	41	348						
Ouaddai	Assoungaha	Adré	Koufron	26	78						
Ouaddai	Assoungaha	Molou	Ngaldang	6	27						
Ouaddai	Assoungaha	Molou	Laban Dafak	6	19						
Ouaddai	Assoungaha	Tourane	Gaga	1	4						
Total Ouaddai				11 916	69 455						

Distribution of non-food items to Chadian returnees

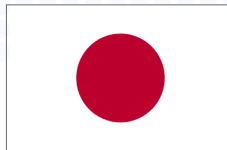


USAID
FROM THE AMERICAN PEOPLE



Schweizerische Eidgenossenschaft
Confédération suisse
Confederazione Svizzera
Confederaziun svizra

Swiss Agency for Development
and Cooperation SDC



For more information, please contact
Jonathan Baker, Emergency Coordinator (Sudan Response)
Email: jobaker@iom.int

