

DISPLACEMENT TRACKING MATRIX — NIGERIA EMERGENCY TRACKING TOOL (ETT)

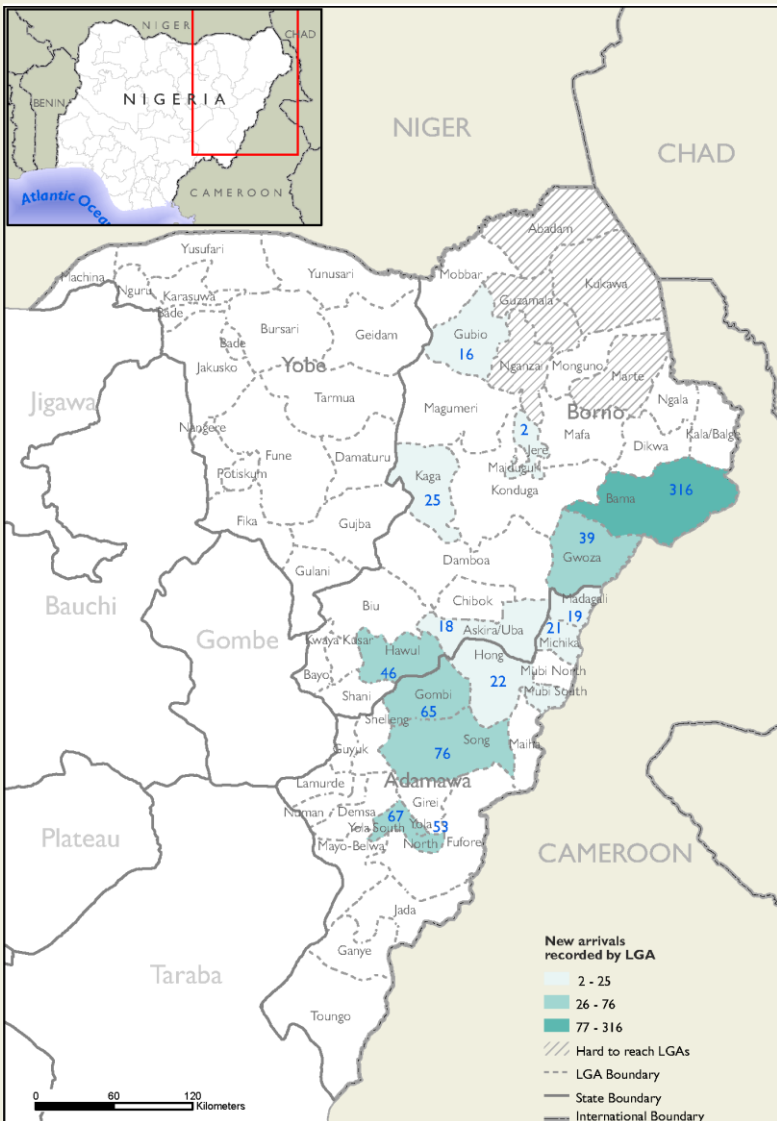
SUMMARY OF MOVEMENTS IN BORNO AND ADAMAWA STATES, 13 – 19 May 2024

DASHBOARD: 380

DATA COLLECTION: Week 19, 2024

DATE OF PUBLICATION: 23 May 2024

OVERVIEW OF DISPLACEMENTS

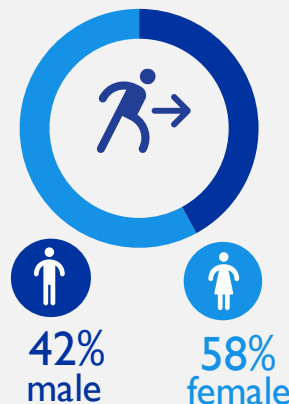


This map is for illustration purposes only. Names and boundaries on this map do not imply official endorsement or acceptance by IOM.

KEY FIGURES



GENDER BREAKDOWN



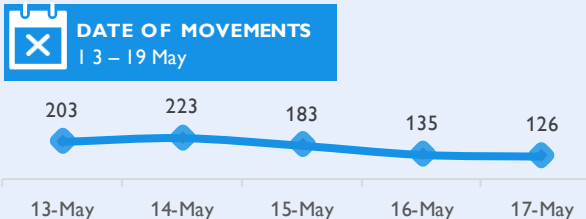
METHODOLOGY

The DTM Emergency Tracking Tool (ETT) is deployed to track and collect information on large and sudden population movements, provide frequent updates on the scale of displacement and quantify the affected population when needed. As a sub-component of the mobility tracking methodology in Nigeria, ETT utilizes direct observations and a broad network of key informants to capture the best estimates of the affected population per location, enabling targeted humanitarian response planning.

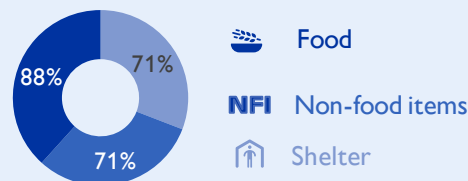
LIMITATIONS

The ETT figures reported are not cumulative of all the affected persons thus far but rather provide a snapshot of the current displacement situation on the date indicated. The data and information reported on this dashboard are related solely to the movements caused by the triggers on page two between 13 – 19 May.

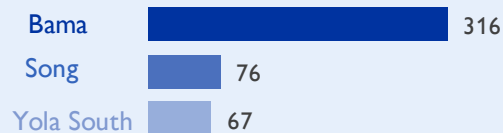
DISPLACEMENT EVOLUTION



TOP REPORTED NEEDS*



TOP AREAS OF ORIGIN



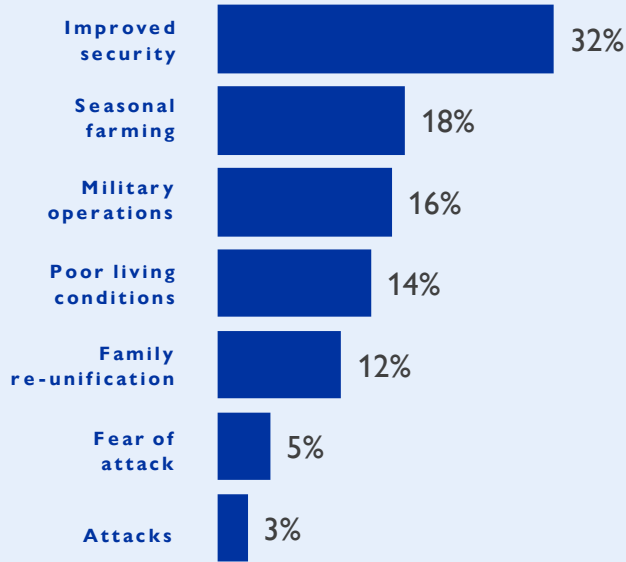
*Multiple-choice response

ALERT SUMMARY

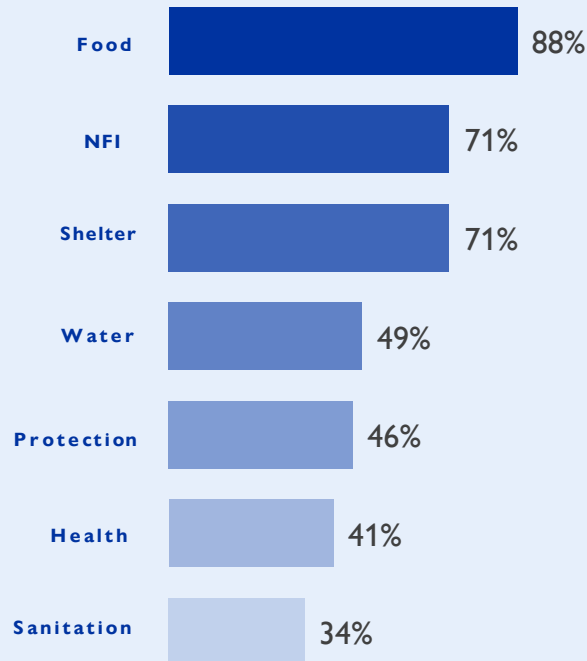
Between 13 and 19 May 2024, a total of 870 new arrivals were recorded at locations in Adamawa and Borno states. The new arrivals were recorded at locations in Askira/Uba, Bama, Gubio, Gwoza, Hawul, Jere, and Kaga Local Government Areas (LGAs) of the most conflict-affected Borno State and in Gombi, Hong, Madagali, Michika, Mubi South, Song, Yola North and Yola South LGAs of Adamawa State.

ETT assessments identified the following movement triggers: improved security (276 individuals or 32%), seasonal farming (154 individuals or 18%), military operations (143 individuals or 16%), poor living conditions (126 individuals or 14%), family re-unification (102 individuals or 12%), fear of attack (44 individuals or 5%) and attack (25 individuals or 3%).

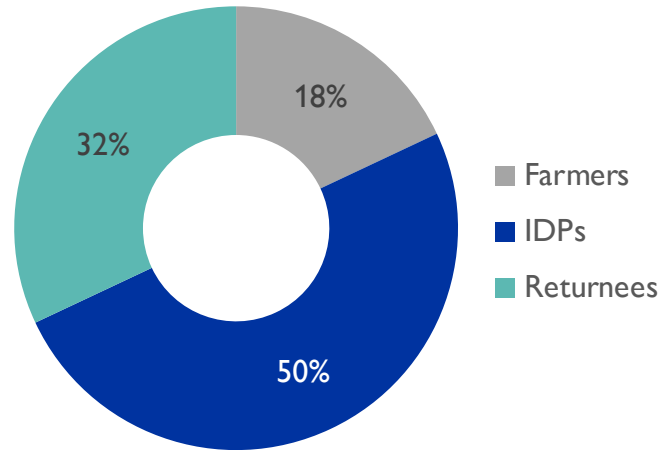
PERCENTAGE OF INDIVIDUALS BY MOVEMENT TRIGGER



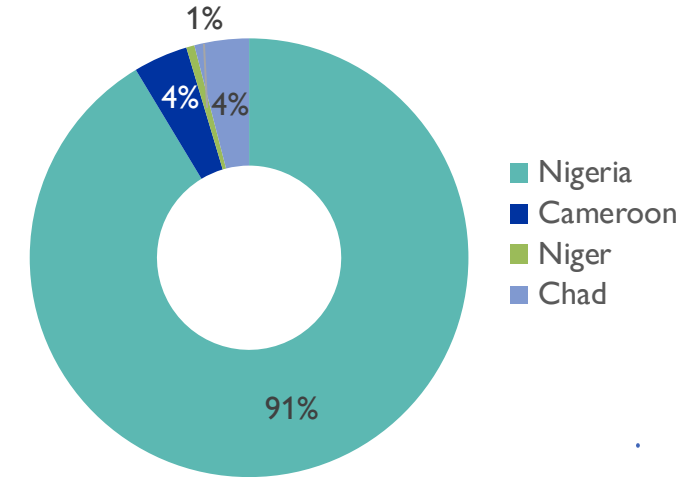
NEEDS EVOLUTION*



ARRIVING POPULATION



COUNTRY OF DEPARTURE OF THE POPULATION



NEW ARRIVALS SCREENING BY NUTRITION PARTNERS



188 MUAC

Children (6 – 59 months)
Screened for malnutrition.
Category of screened children.

Green: 146

Yellow: 29

Red: 13

MALNUTRITION SCREENING SUMMARY OF THE NEW ARRIVALS (CHILDREN 6 – 59 MONTHS)

Between 13 and 19 May 2024, an exhaustive nutrition screening using Mid-Upper Arm Circumference (MUAC) and oedema for acute malnutrition was conducted by sector partners for 188 children aged 6-59 months. Of the 188 children screened, the MUAC reading indicated that 13 were recorded in the red category, 29 in the yellow category and 146 in the green category. No case of oedema was reported in the seven LGAs assessed.

Among the 188 children screened, 49 arrived from neighbouring countries (48 in Mobbar, and 1 in Monguno); of all the 49 children measured; 48 were in green category and one in the yellow category. All children found with acute malnutrition have been admitted to the treatment programme.

LGA	MUAC Categories						Total
	Green ($\geq 12.5\text{cm}$)		Yellow ($11.5\text{cm} - 12.5\text{cm}$)		Red ($< 11.5\text{cm}$)		
	Inaccessible	Accessible	Inaccessible	Accessible	Inaccessible	Accessible	
Bama	63	0	13	0	9	0	85
Dikwa	22	0	14	0	1	0	37
Gwoza	6	6	0	0	1	2	15
Kala Balge	0	1	0	0	0	0	1
Mobbar	0	47	0	1	0	0	48
Monguno	0	1	0	0	0	0	1
Ngala	0	0	1	0	0	0	1
Total	91	55	28	1	11	2	188

Please note, the data presented above are not surveillance results and should be interpreted with caution.

■ Nourished
 ■ Moderate Acute Malnutrition (MAM)
 ■ Severe Acute Malnutrition (SAM)

*Multiple-choice response

DISPLACEMENT BREAKDOWN — all movements recorded are listed below.

State	Arrival location		Movement location			Number of individuals
	LGA	Ward	State	LGA	Ward	
Adamawa	Fufore	Beti	Adamawa	Yola South	Adarawo	24
		Ribadu	Adamawa	Yola South	Adarawo	26
	Gombi	Gombi South	Adamawa	Yola North	Jambutu	22
		Garkida	Borno	Hawul	Kwajaffa/Hang	46
	Madagali	Madagali	Cameroon	Marwa	Mokolo	32
		Pallam	Adamawa	Song	Song Gari	27
		K/Wuro Ngayandi	Borno	Askira / Uba	Lassa	18
		Duhu/Shuwa	Adamawa	Song	Sigire	28
	Maiha	Mayonguli	Adamawa	Madagali	Madagali	19
		Bazza Margi	Adamawa	Yola North	Gwadabawa	13
	Michika	Madzi	Adamawa	Gombi	Gombi North	31
		Michika I	Adamawa	Song	Song Waje	21
		Futudou / Futules	Adamawa	Yola North	Luggere	10
		Futudou / Futules	Adamawa	Yola North	Karewa	8
		Garta / Ghunchi	Adamawa	Michika	Zah	21
	Mubi North	Digil	Adamawa	Mubi South	Nassarawo	11
		Digil	Adamawa	Yola South	Namtari	17
	Song	Zumo	Adamawa	Gombi	Gombi South	34
	Askira/Uba	Dille / Huyum	Adamawa	Hong	Hildi	22
		Uba	Chad	Kanem	Kanem	38
Borno	Bama	Shehuri / Hausari / Mairi	Borno	Bama	Yabiri Kura/Yabiri Gana/Chongolo	16
		Shehuri / Hausari / Mairi	Borno	Bama	Gulumba / Jukkuri / Batra	127
		Buduwa / Bula Chirabe	Borno	Bama	Lawanti / Malam / Mastari / Abbaram	55
		Buduwa / Bula Chirabe	Borno	Bama	Andara / Ajiri /Wulba	100
	Gwoza	Gwoza Wakane/Bulabulin	Borno	Gwoza	Hambagda/ Liman Kara/ New Settlement	8
		Gwoza Wakane/Bulabulin	Borno	Gwoza	Kurana Bassa/Ngoshe - Sama'A	7
		Pulka/ Bokko	Borno	Bama	Dipchari / Jere / Dar-Jamal / Kotembe	1
		Pulka/ Bokko	Borno	Bama	Sabsabwa/Soye/Bulongu	12
		Pulka/ Bokko	Borno	Gwoza	Johode/Chikide/Kughum	11
	Kaga	Pulka/ Bokko	Borno	Gwoza	Dure / Wala / Warabe	13
		Benisheikh	Borno	Kaga	Borgozo	25
	Monguno	Monguno	Niger Republic	Diffa	Diffa	4
	Ngala	Ngala	Borno	Bama	Kumshe/Nduguno	5
	Gubio	Gubio I	Borno	Gubio	Felo	16
Kala Balge	Rann A	Borno	Jere	Mashamari	2	