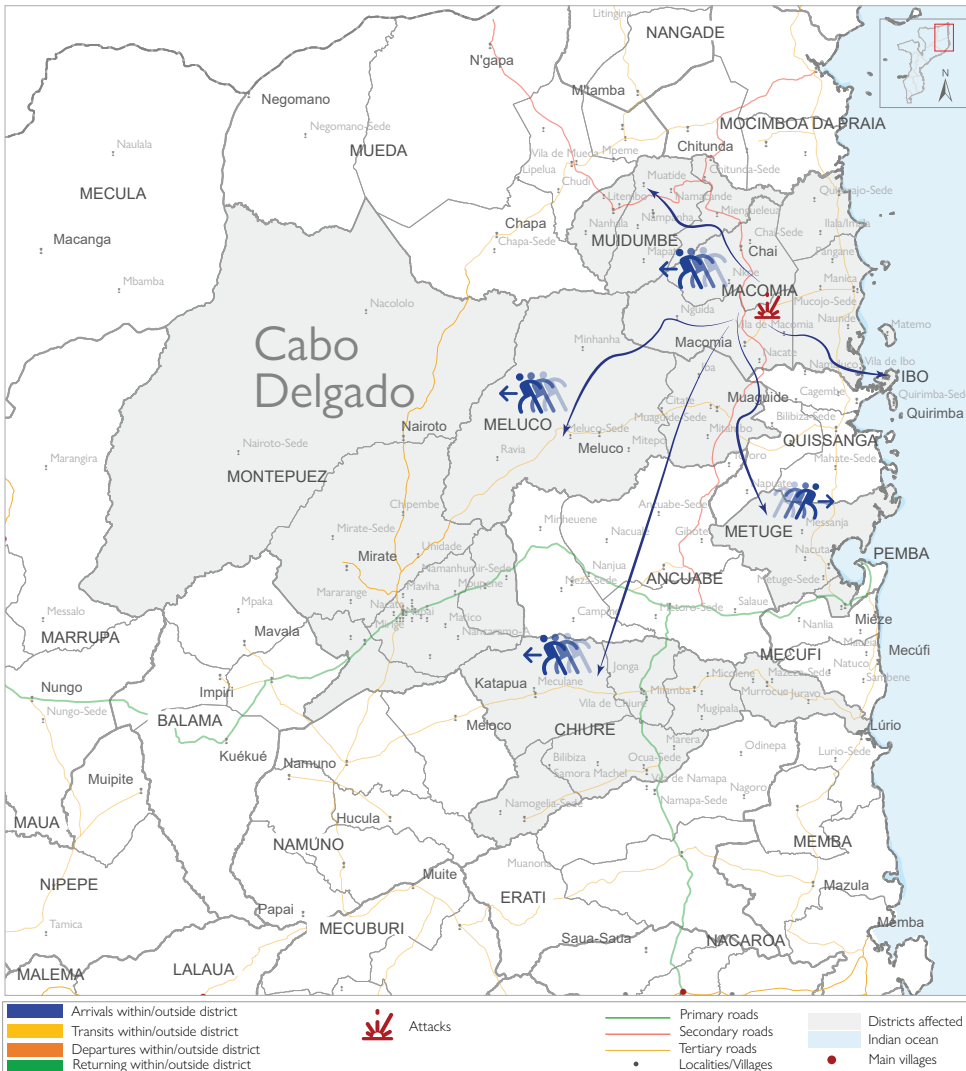


3,106
Cumulative number of displaced individuals
(10 to 17 May 2024)

1,021
Cumulative number of displaced families
(10 to 17 May 2024)

Nature of trigger:
Conflicts/Attacks,
Fear of attacks

Mode of transportation:
Boat/canoe, Bus, walking



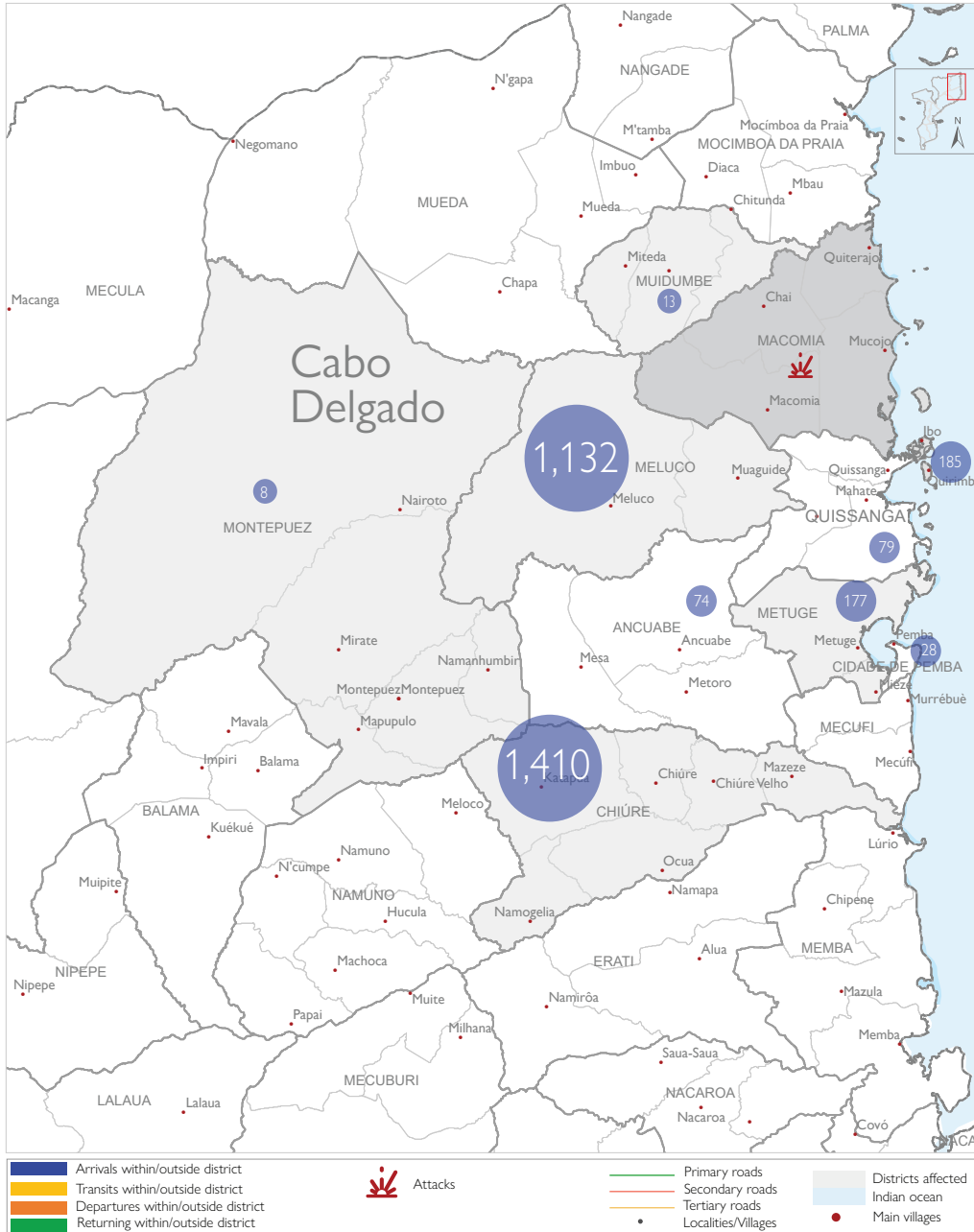
Between 10 to 17 May 2024, attacks and fear of attacks by Non-state Armed Groups in Macomia triggered the cumulative displacement of **3,106** individuals/ **1,021** families. The current Movement Alert #113 reports on most recent attacks in Northern Cabo Delgado. For more information on displacements between January and April 2024, please see {Emergency Tracking Online Dashboard}.

Macomia attacks | 3,106 Individuals displaced
(10 to 17 May 2024)

Within the reporting period, attacks and the fear of attacks by Non-State Armed Groups in Macomia led to the displacement of **3,106** individuals. The affected families have sought refuge in displacement sites and host communities in the districts of Meluco, Metuge, Chiure, Ibo, Ancuabe and Muidumbe. Within displacement sites, **374** families with **1,307** individuals have taken refuge in Chiure (Bairro Muajaja Camp), **71** families with **179** individuals have taken refuge in Ancuabe (Natove, Cujupane and Nankumi centres), Quissanga (Manicane center), and Muidumbe (Lutete center). A total of **576** families (representing **1,620** individuals) are displaced to host communities within neighbourhoods of Meluco (Bairro Iba), Metuge (Ngura, Bairro 1 de Maio, Bairro 7 de Abril, Bairro 10 Congresso), Chiure (Vila de Chiure), Ibo (Vila do Iba) and Cidade de Pemba (Bairro Natite). Movements within Macomia and surrounding districts remain fluid.

Owing to prevailing security concerns in the region reported by displaced families, intentions on duration of their stay in current locations of displacement sites and host communities remains uncertain. The objective of the Emergency Tracking Tool (ETT) - Movement Alert is to collect information on large and sudden population movements, providing humanitarian response partners with data on IDPs to support effective humanitarian response. Information is collected through key informants' interviews or direct observation. This alert provides basic information on displacements, and additional information can be shared upon request.

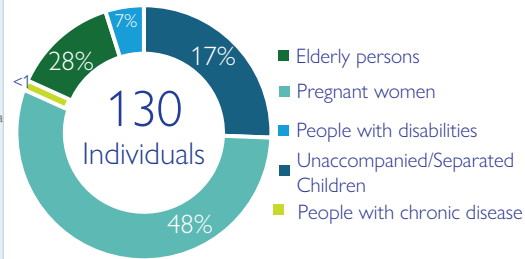
The depiction and use of boundaries, geographic names, and related data shown on maps and included in this report are not warranted to be error free nor do they imply judgment on the legal status of any territory, endorsement or acceptance of such boundaries by IOM.



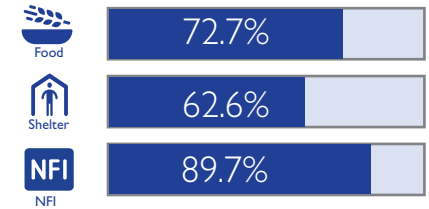
DEMOGRAPHIC PROFILE



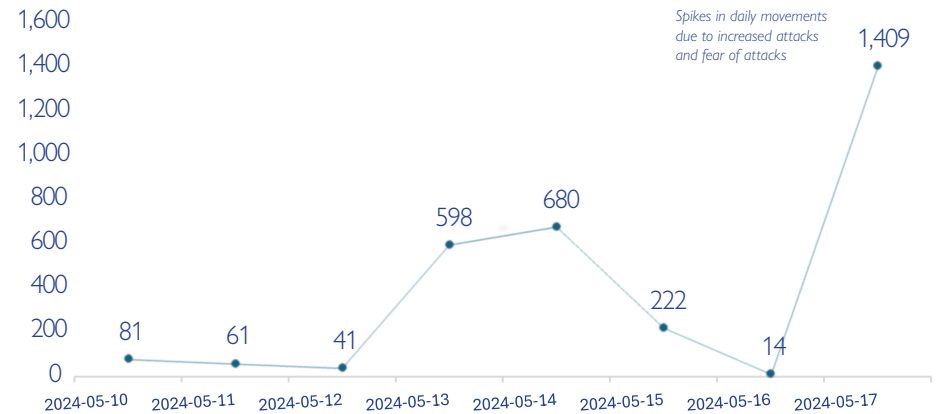
VULNERABILITIES



URGENT NEEDS



TREND: DISPLACED INDIVIDUALS



MOVEMENT FLOW: (Postos of departure and posto of destination)

