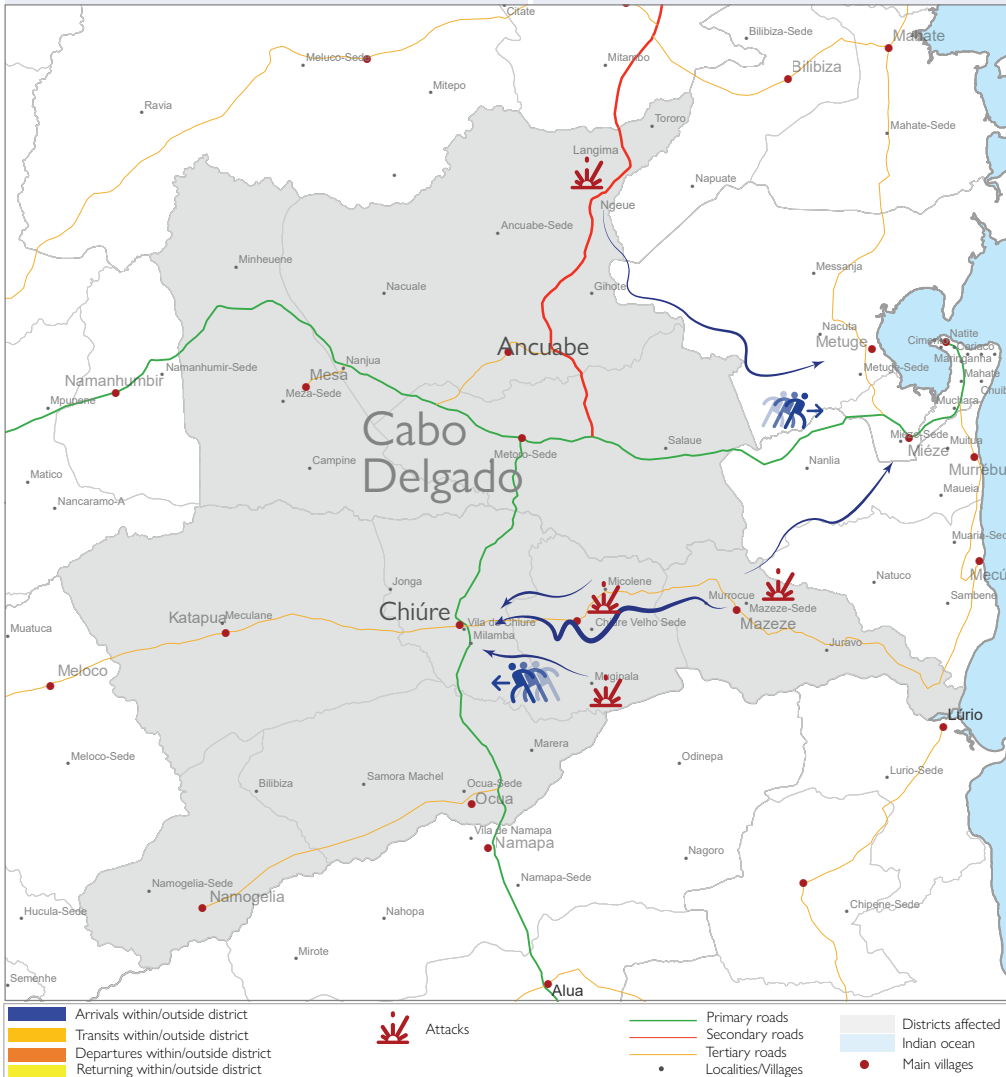


2,160
Cumulative number of displaced individuals
(17 to 23 April 2024)

488
Cumulative number of displaced families
(17 to 23 April 2024)

Nature of trigger:
Conflicts/Attacks,
Fear of attacks

Mode of transportation:
Boat/canoe, Bus, walking



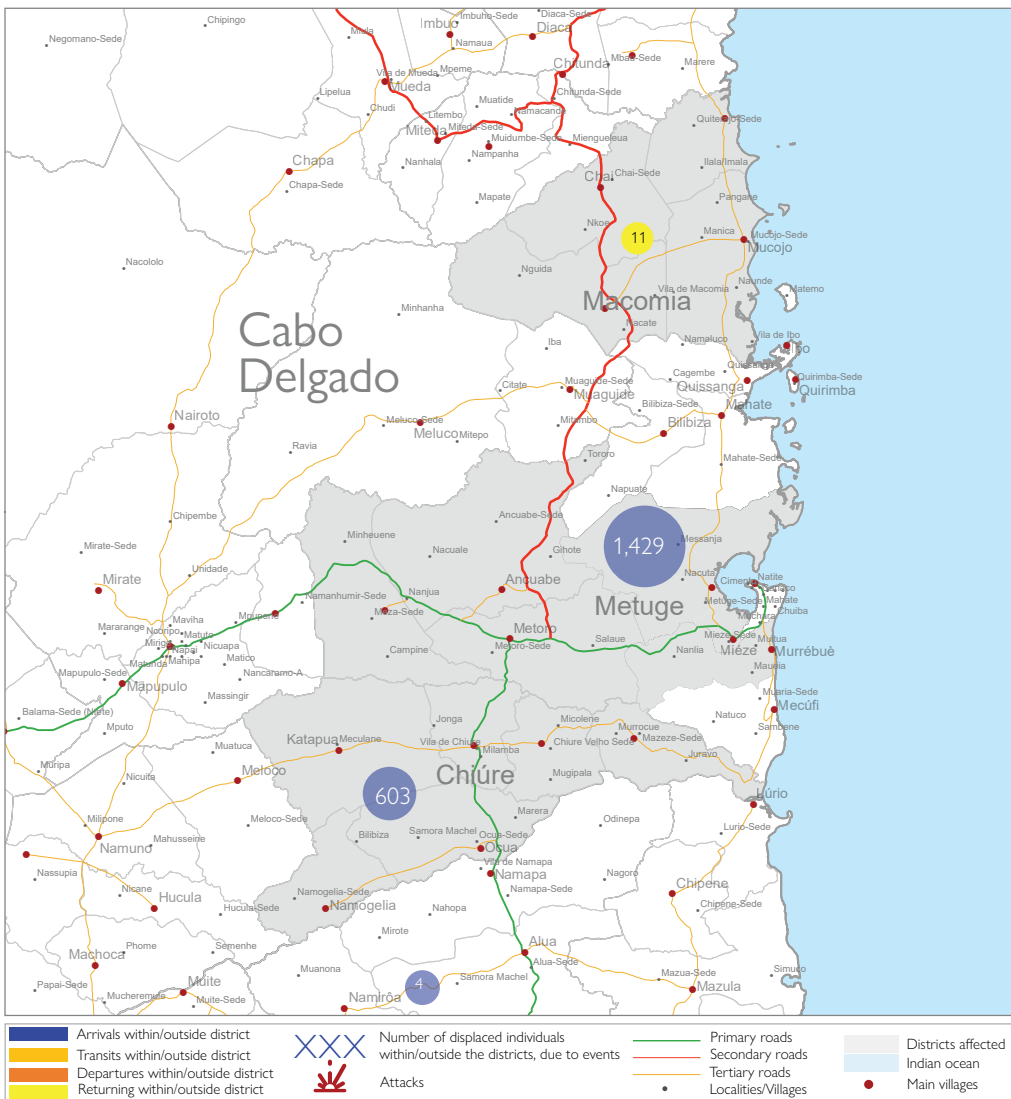
Ancuabe attacks | 1,487 Individuals displaced
(17 to 23 April 2024)

Within the reporting period, attacks and the fear of attacks by Non-State Armed Groups in Ancuabe led to the displacement of **1,487** individuals. The affected families have sought refuge in displacement sites and host communities in the districts of Ancuabe, and Metuge. Within displacement sites, 43 families with 148 individuals have taken refuge in Natove, Cujupane and N'haua. A total of 287 families (representing 1,328 individuals) are displaced to host communities within neighbourhoods of Ancuabe Sede (including Ntuto, Nanao A and Ntutu) and Metuge (Bairro 1 de Maio and Bairro 7 de Abril). Movements within the district remain fluid.

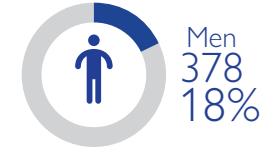
Chiúre attacks | 673 Individuals displaced
(17 to 23 April 2024)

Within the reporting period, attacks and fear of attacks by Non-State Armed Groups in Chiúre led to the displacement of **673** individuals. The affected families have sought refuge in displacement sites and host communities of Chiúre Sede and Metuge. Within displacement sites, 96 families with 401 individuals have temporarily taken refuge in Namissir temporary Site. A total of 60 families (representing 272 individuals) are displaced to host communities within neighbourhoods of Chiúre Sede (including Nahavara and Namissir) and Mizeze (Bairro 7 de Abril e Bairro 1 de Maio). Movements within the district remain fluid.

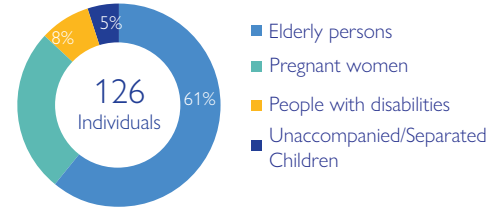
The depiction and use of boundaries, geographic names, and related data shown on maps and included in this report are not warranted to be error free nor do they imply judgment on the legal status of any territory, endorsement or acceptance of such boundaries by IOM.



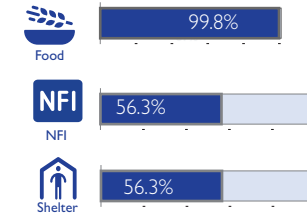
DEMOGRAPHIC PROFILE



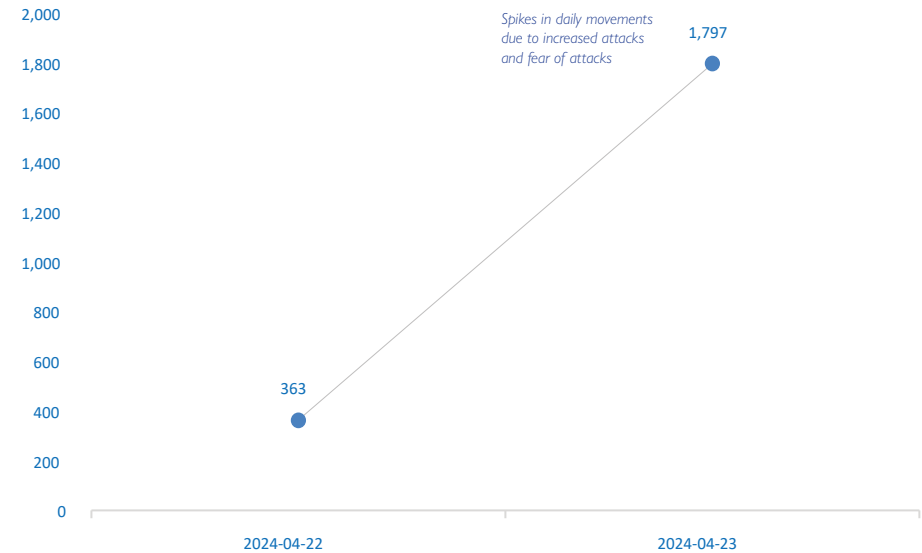
VULNERABILITIES



URGENT NEEDS



TREND: DISPLACED INDIVIDUALS



Owing to prevailing security concerns in the region reported by displaced families, intentions on duration of their stay in current locations of displacement sites and host communities remains uncertain. The objective of the Emergency Tracking Tool (ETT) - Movement Alert is to collect information on large and sudden population movements, providing humanitarian response partners with data on IDPs to support effective humanitarian response. Information is collected through key informants' interviews or direct observation. This alert provides basic information on displacements, and additional information can be shared upon request.

MOVEMENT FLOW: (Postos of departure and posto of destination)

