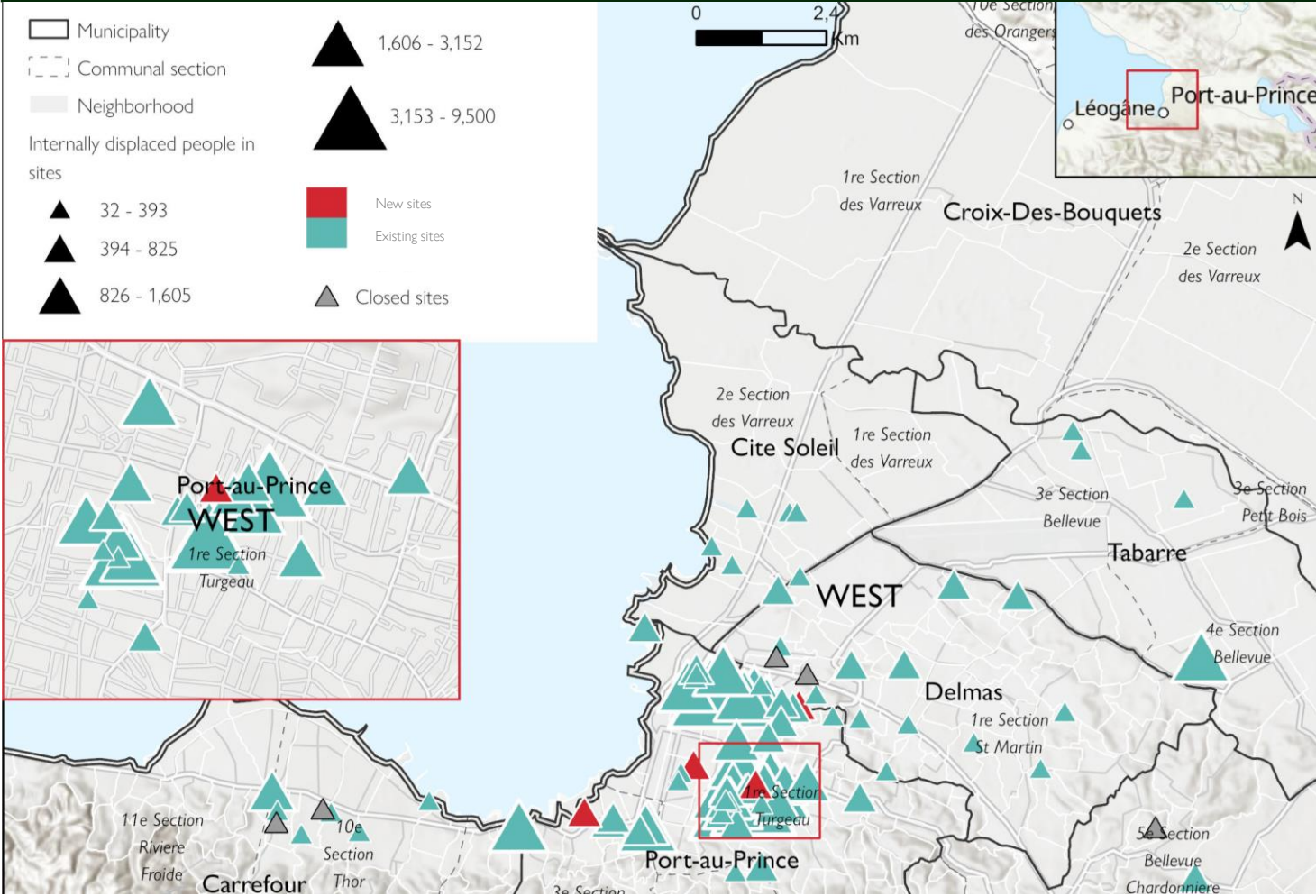


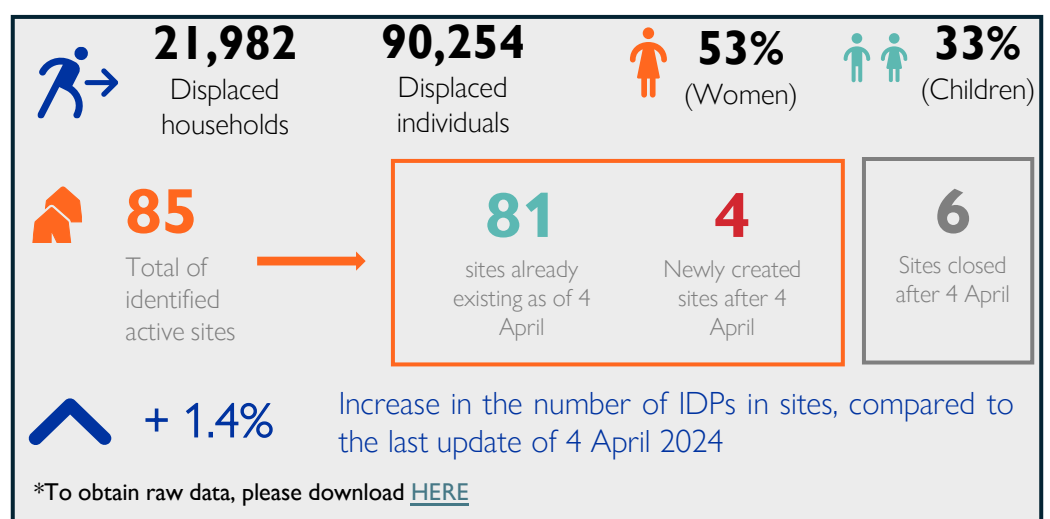
**Methodology**

Site assessments are carried out through group interviews with Key Informants (KIs), including committees of displaced people in sites. Data collection teams, composed in particular of “brigadiers” (field agents) from the General Directorate of Civil Protection (DGPC), visit all accessible sites and interview KIs (on average 3 KIs per site). Sites not accessible due to security constraints are assessed by phone. For this update, 276 KIs were interviewed. Interviews were conducted in person/on site in 77% of sites (70 out of 91) and by phone in 23% of sites (21 out of 91).

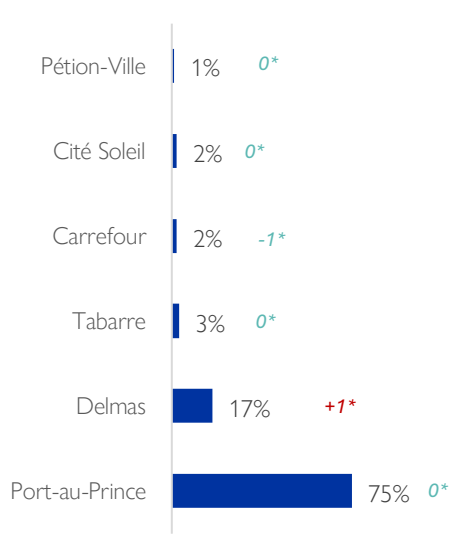
**Map 1: Displacement situation in sites of the Metropolitan Area of Port-au-Prince (MAPAP)**



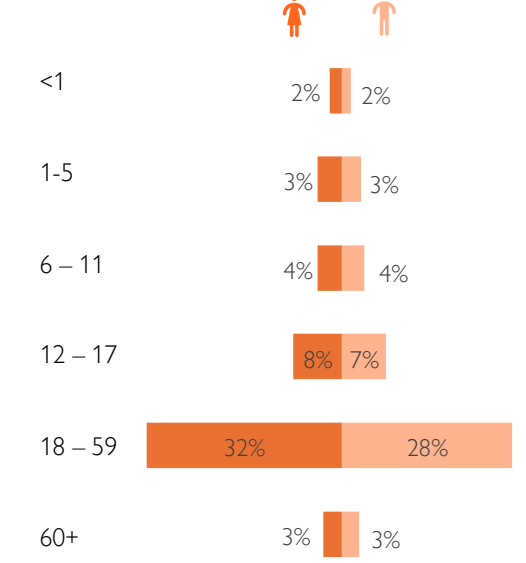
**Key figures on IDPs in sites of MAPAP**



**Host municipalities of IDPs in sites (% of IDPs)**

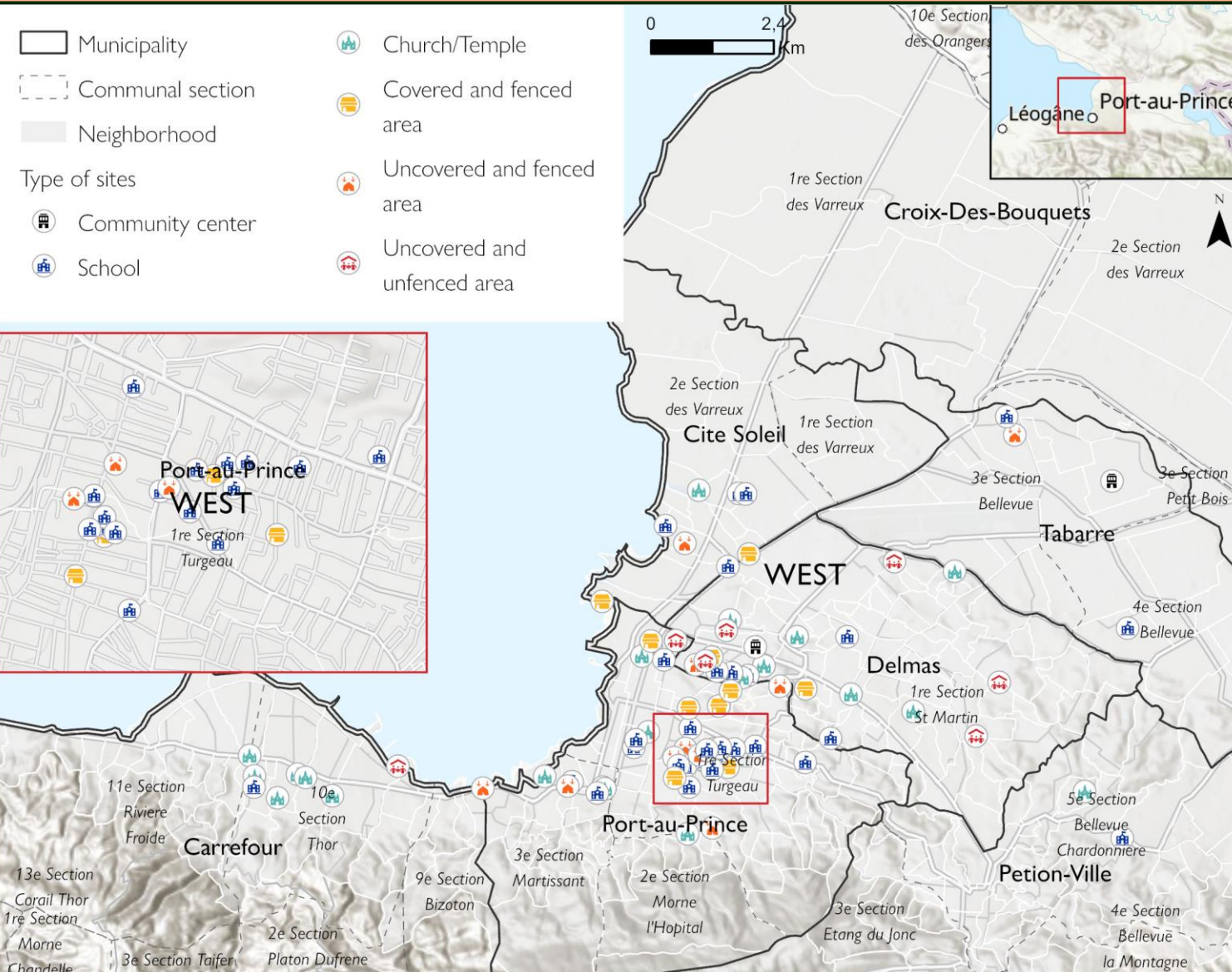


**Demographic distribution by sex and age groups**

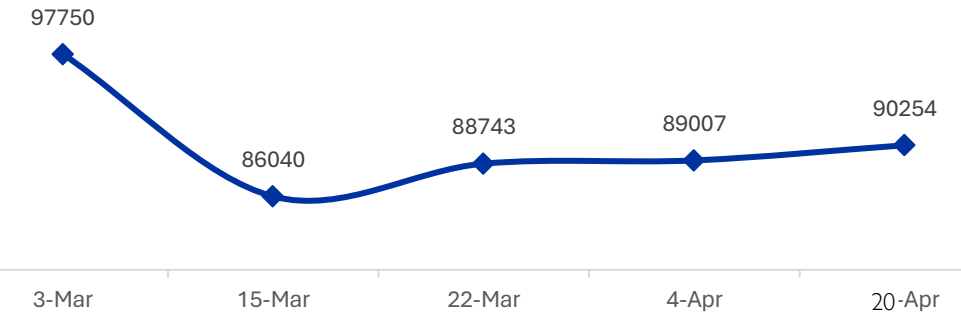


\* Différence comparé to 4 April

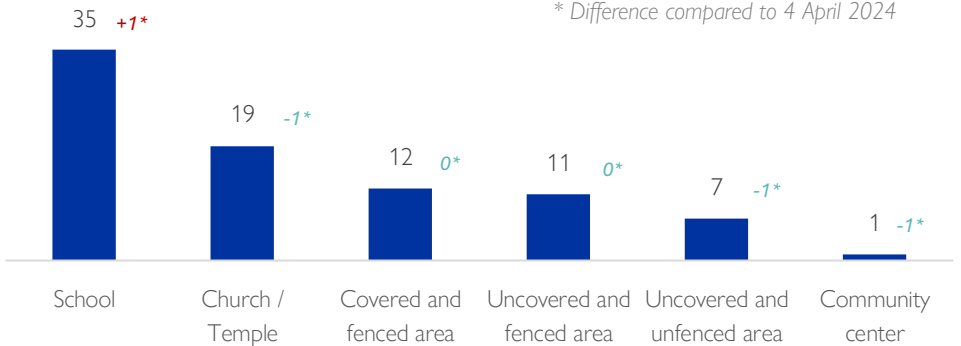
**Map 2: Types of IDPs' sites in the Metropolitan Area of Port-au-Prince**



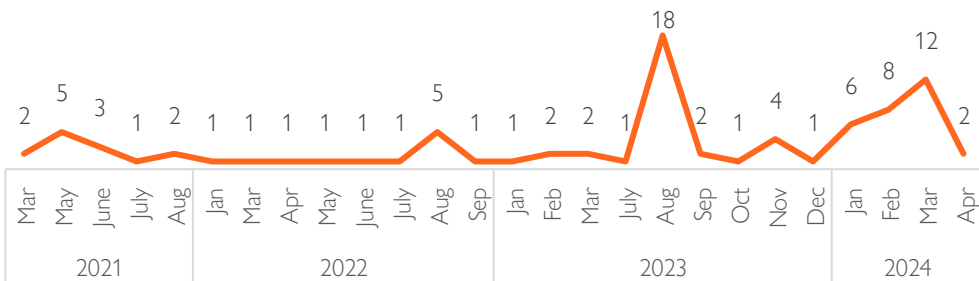
Evolution of the number of IDPs

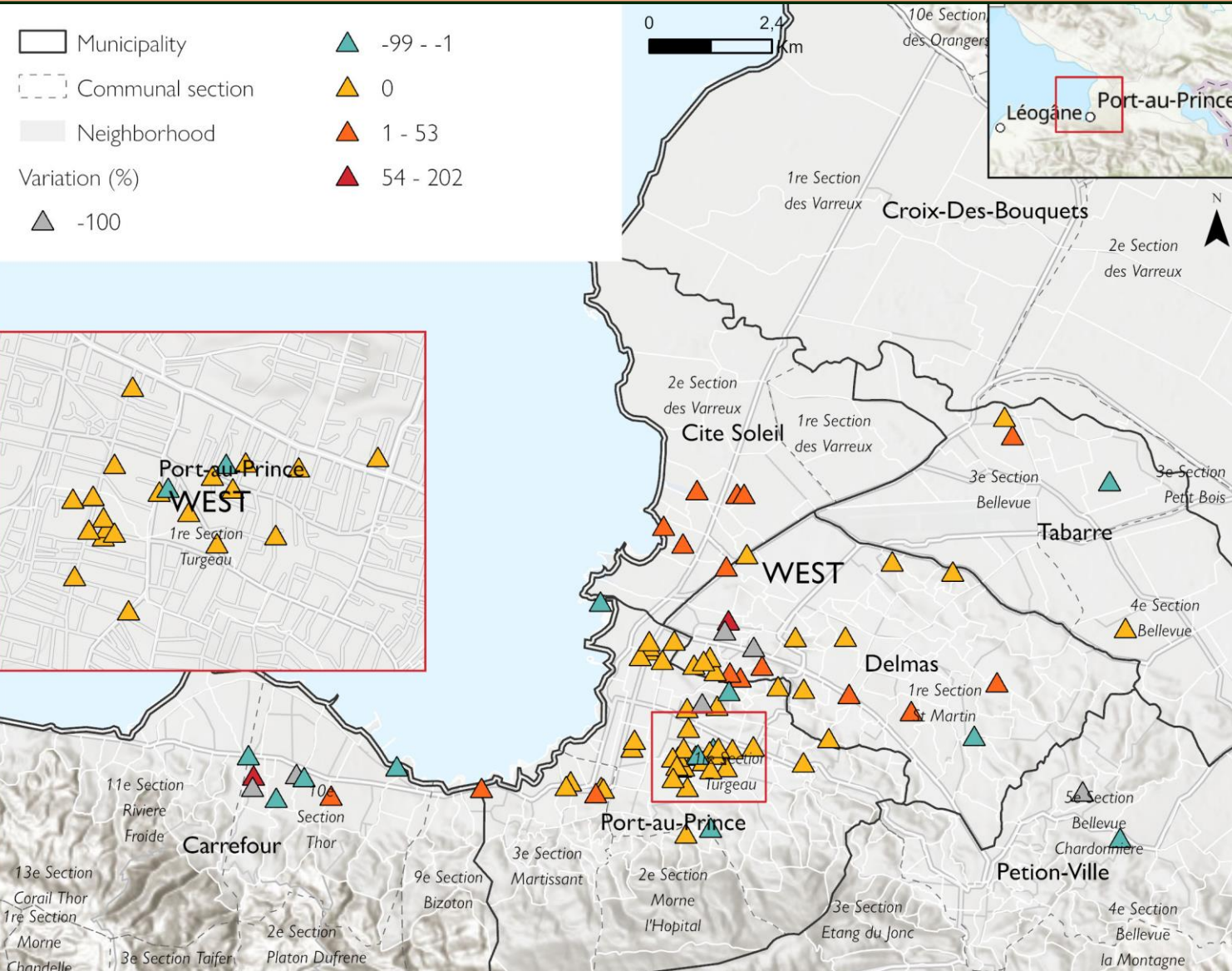


Types of sites (Number of sites)



Period of creation of the current 85 active sites



**Map 3: Variation in the number of IDPs in sites**


Sites having experienced significant variations compared to 4 April 2024

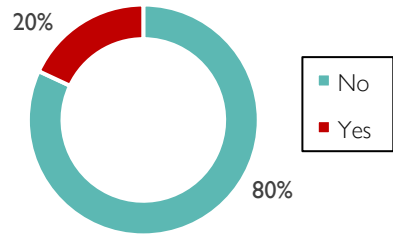
Municipality	Neighborhood	Site name	Number of IDPs	Variation compared to 4 April 2024
Carrefour	Mahotièrè	Eglise de Jésus Christ	202	+26%
Port-au-Prince	Fontamara Est	La rochelle mache poisson	2792	+53%
Port-au-Prince	Bas Peu de Chose	Ecole La Babinerie	450	+100% (Site ouvert)
Port-au-Prince	Bas Martissant	Eglise Troupeau de Jésus	563	+100% (Site ouvert)
Delmas	Cite Numéro 2	Institution Mixte de Salem Caonabo	797	+100% (Site ouvert)
Port-au-Prince	Fort National	Première Eglise Baptiste de Port-au-Prince	640	+100% (Site ouvert)
Carrefour	Brochette	Grotte Higuey D'Haïti Altigrace	176	+120%
Delmas	Aviation Militaire - Sous Piste	Eglise de Dieu la Résurrection de Jésus Christ	332	+202%

**Closed sites :**

1. Building 2004
2. Centre d'accueil de Delmas 5
3. Eglise de Dieu Assemblée Chrétienne #108
4. Eglise Indigène d'Haïti de Waney 93
5. Institution mixte le Luxe
6. Eglise Nazaréen de Frères

**Threats of eviction and site density**

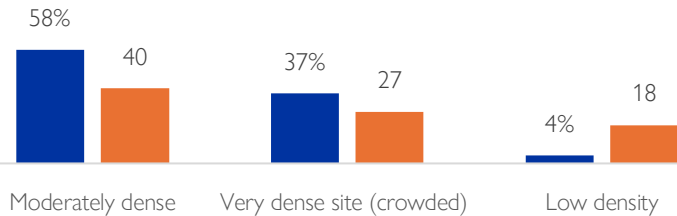
Percentage of IDPs threatened with eviction in the sites



**23** sites threatened with eviction

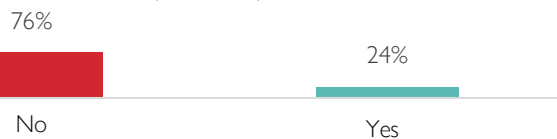
Density in sites (Direct observation)

■ % of IDPs ■ # of sites



**Lighting in sites**

"Is there lighting on the site at night?"  
(% of sites)



**People with specific needs on sites\***



**10,152**

IDPs on site are females heads of households



**506**

IDPs in sites are children heads of households



**779**

IDPs in sites are breastfeeding women



**531**

IDPs in sites are pregnant women



**269**

IDPs in sites are presumed unaccompanied children



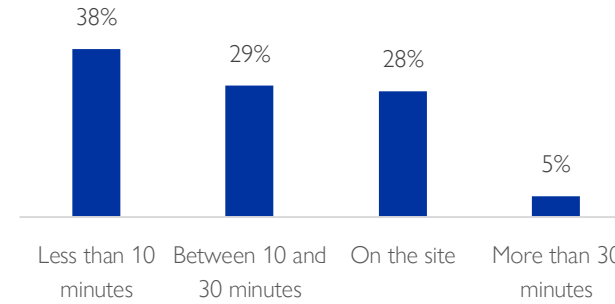
**99**

IDPs in sites are injured individuals

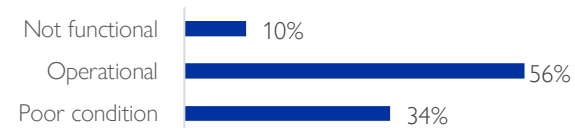
\*This is only an overview of certain groups for people with specific needs. Protection cluster partners regularly carry out protection assessments to identify people with specific needs in order to provide assistance that is appropriate for them.

**Key figures on Water, Sanitation, and Hygiene**

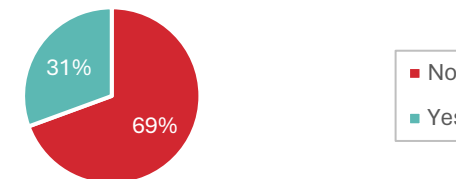
"How long do displaced people walk to access the nearest water source?" (% of sites)



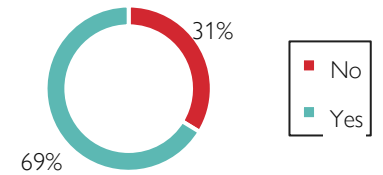
"What is the condition of the majority of latrines?" (% of sites)



Existence of a water evacuation system (% of sites)

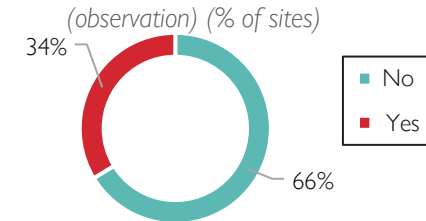


"Are there latrines at this displacement site?" (% of sites)



26 sites do not have latrines. For sites that have them, the average is 3 latrines per site (350 IDPs/latrine on average).

Visible evidence of open defecation? (observation) (% of sites)



Existence of a garbage collection system (% of sites)

