



**DISPLACEMENT TRACKING MATRIX (DTM) TIGRAY REGION, ETHIOPIA**  
**ROUND 13: SEPTEMBER/OCTOBER 2018**  
*Summary of key findings*



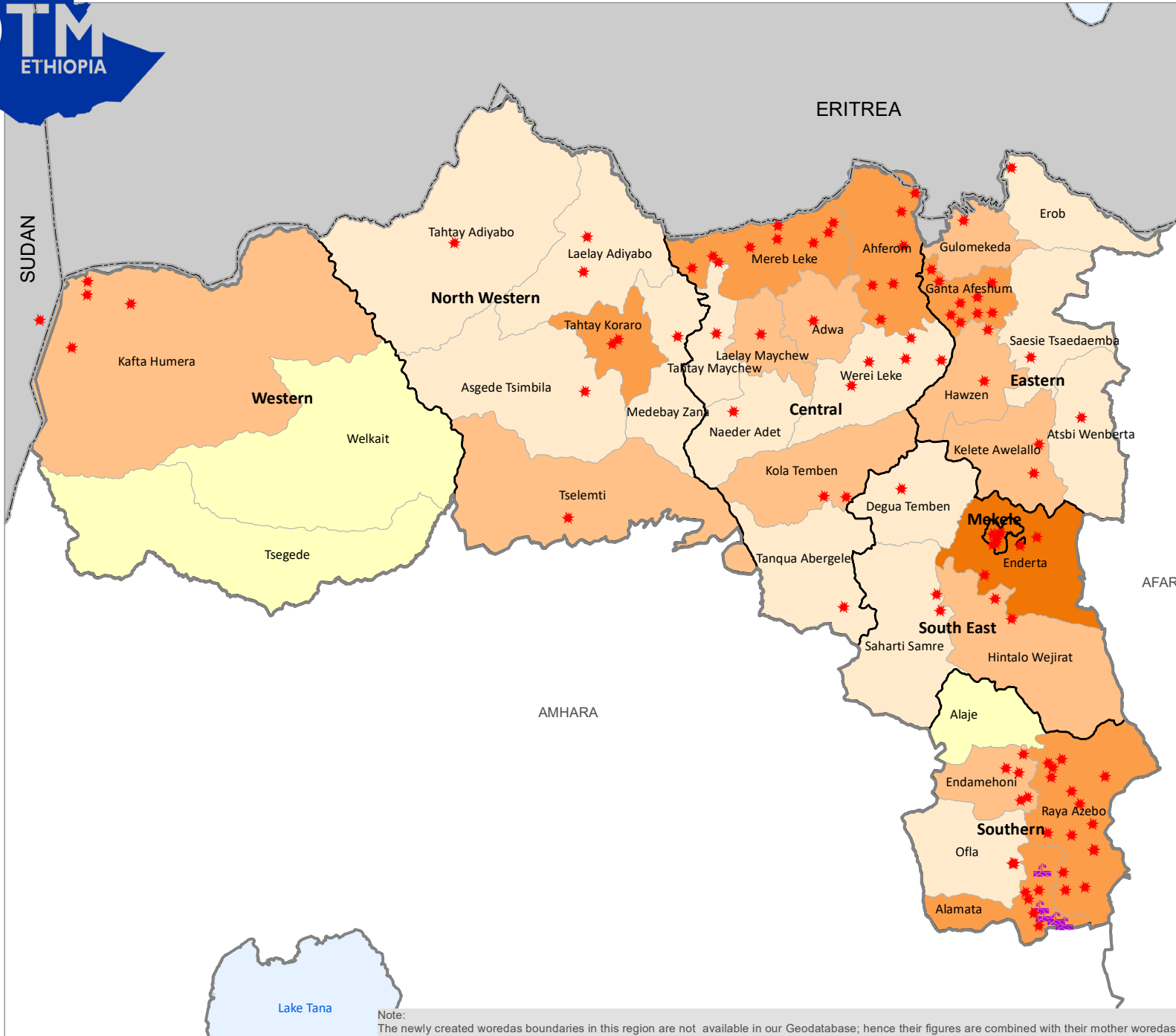
Funded by  
European Union  
Humanitarian Aid



# DISPLACEMENT TRACKING MATRIX (DTM) TIGRAY, ETHIOPIA ROUND 13: SEPTEMBER/OCTOBER 2018



## OVERVIEW OF DISPLACEMENT TIGRAY REGION DTM Round 13 FROM SEPTEMBER 1 - 30, 2018



**Sites by causes of displacement**

- ★ Conflict
- ★ Climate induced

**IDPs in assessed woredas**

- 47 - 500
- 501 - 2,500
- 2,501 - 10,000
- 10,001 - 16,569
- No IDPS

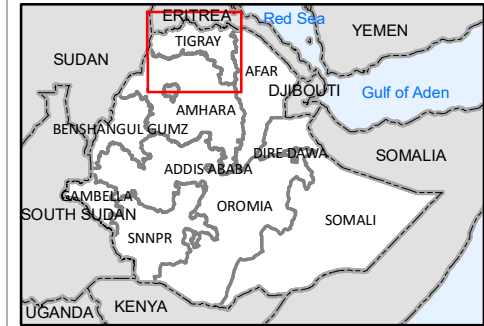
**Boundaries**

- International Boundary
- Regional Boundary
- Zonal Boundary
- Woreda Boundary

Scale: 0, 12.5, 25, 50, 75 Kilometers

Sources : IOM Map production date : 31 Oct 2018  
 This map is for illustration purposes only.  
 Names and boundaries on this map do not imply official endorsement or acceptance by IOM.  
 Map Data Source: Boundary shapefile - CSA 2008

[www.displacement.iom.int/ethiopia](http://www.displacement.iom.int/ethiopia)  
[dtmethiopia@iom.int](mailto:dtmethiopia@iom.int)



Note: The newly created woredas boundaries in this region are not available in our Geodatabase; hence their figures are combined with their mother woredas.



# DISPLACEMENT TRACKING MATRIX (DTM) TIGRAY REGION ETHIOPIA

## ROUND 13: SEPTEMBER - OCTOBER 2018

### TIGRAY REGION - KEY FINDINGS

**LOCATION AND CAUSE OF DISPLACEMENT:** 49,552 displaced individuals comprising 20,842 households in 103 displacement sites were identified in TIGRAY region. These figures represent an increase of 19,438 in the total individuals (64.55%) an increase of 9,526 households (84.18%) and an increase of 18 sites (21.18%) since round 12 July/August 2018. 7.77% sites opened in 2017 and 27.18% opened in 2018. Conflict was the primary cause of displacement for an estimated 97.64% of the displaced population.

**DEMOGRAPHICS:** 42.93% of displaced individuals were female and 57.07% were male. 41.71% were younger than 18 years old. 3.27% were over 60 years old.

**SHELTER:** 1 sites reported that over 25% of households were living in shelters that were below regional and cultural standards.

**WASH:** None of the sites assessed meet SPHERE standards of access to over 15 liters of water per person per day. 34 (33.01%) displacement sites reported having no latrines.

**FOOD, NUTRITION AND LIVELIHOODS:** 17 (16.50%) sites, representing 5,762 individuals, reported no access to food. 95.15% of sites reported that IDPs did not have access to income generating activities.

**HEALTH:** Malaria was the primary health concern in this round of data collection with 33 sites reporting this.

**EDUCATION:** In 10.68% of sites 50% or less of the children on site are attending formal primary school. Formal primary school education is available at 98.06% sites. Alternative basic education (ABE) is available at 0 sites.

**COMMUNICATION:** 60.19% of sites reported that Authorities were IDPs primary source of information followed by Local Leader at 39.81% of sites.

Figure 1 illustrates trends in stock totals of displacement in the region over time compared to recent displacement. Figure 2 shows IDP numbers disaggregated by cause over time.

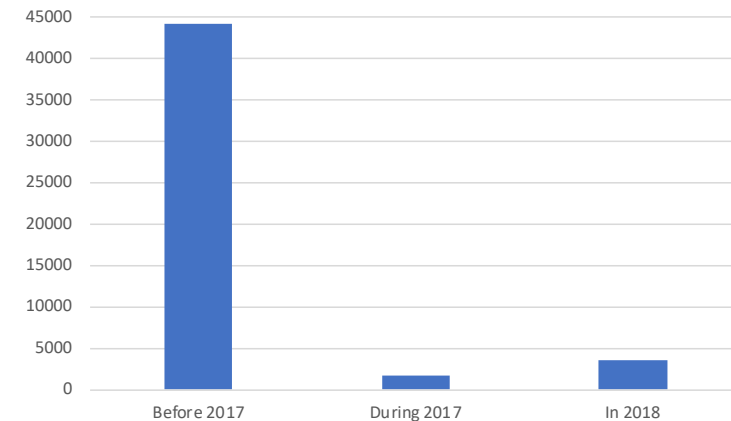


Figure 1: Trends in stock totals of displacement and new displacements from 2017 and 2018

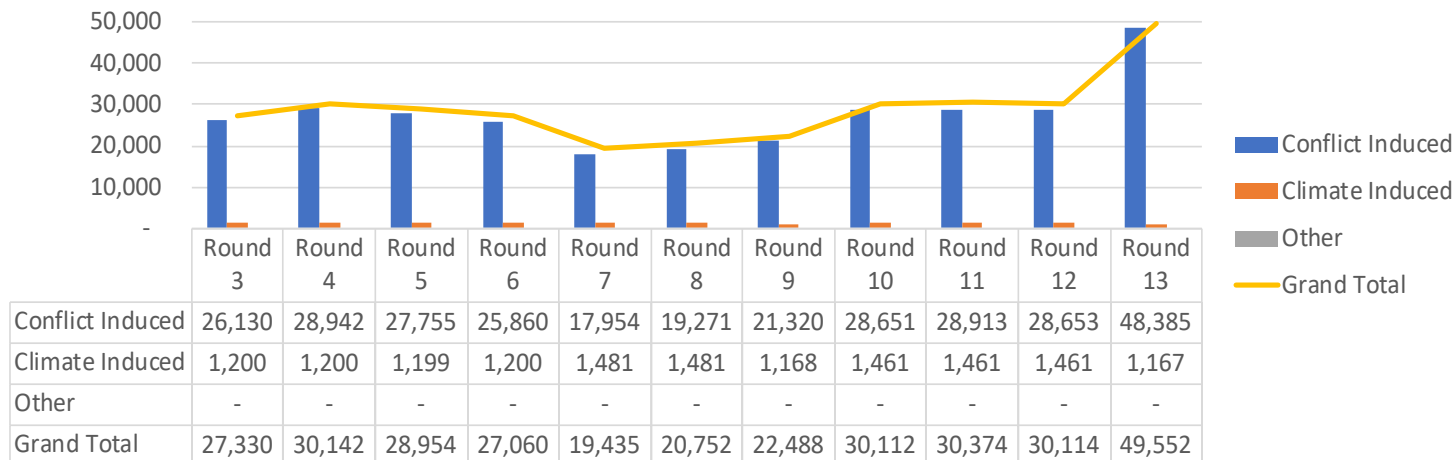


Figure 2: IDPs by cause of displacement by round



## DISPLACEMENT TRACKING MATRIX (DTM) TIGRAY REGION ETHIOPIA ROUND 13: SEPTEMBER - OCTOBER 2018

### MOBILITY TRENDS AND CAUSE OF DISPLACEMENT

Conflict has consistently been reported as the primary cause of displacement in the region (as indicated by figure 4). IDPs displaced in 2018, in 2017 and before 2017 reported being displaced by Conflict. In addition to this 2.36% of IDPs reported being displaced previously. Furthermore, IDPs from 1 site were leaving the current place of displacement. IDPs from this site were going to the nearest village.

Regarding the duration of sites: 27.18% of all sites identified opened in 2018 while 7.77% opened between January and December 2017 and 65.05% of sites opened before 2017.

16.53% of IDPs in the region are internally displaced from the region, within the region. Of the IDPs displaced within the region, 16.53% were displaced within their zone of origin.

Figure 3 shows the number of IDPs displaced by zone and cause of displacement. Figure 4 shows the distribution of IDPs by driver of displacement and time of displacement.

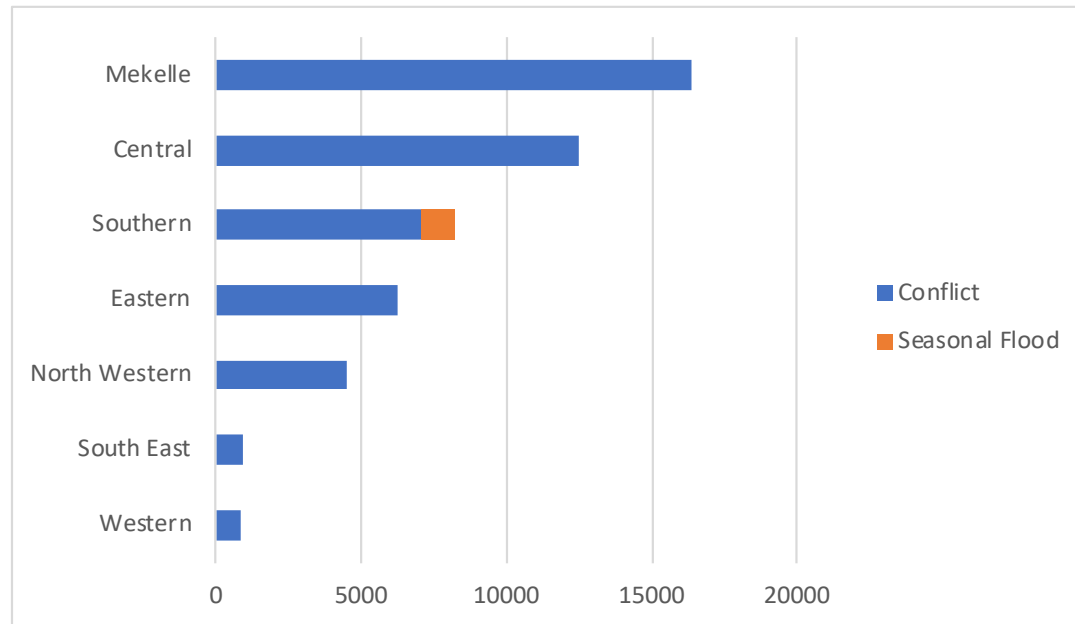


Figure 3: IDPs displaced by zone and cause of displacement

Duration	Conflict Induced	Climate Induced	Grand Total
Before 2017	43,517	722	44,239
During 2017	1,252	445	1,697
In 2018	3,616	-	3,616
Grand Total	48,385	1,167	49,552

Figure 4: Distribution of IDPs by cause of displacement and time of displacement



# DISPLACEMENT TRACKING MATRIX (DTM) TIGRAY REGION ETHIOPIA

## ROUND 13: SEPTEMBER - OCTOBER 2018

### DURABLE SOLUTIONS, VULNERABILITIES AND DEMOGRAPHICS

At 94.17% of sites IDPs foresaw a resolution to their displacement, while IDPs at 5.83% of sites did not.

At 89.32% of sites IDPs prefer reintegration as a durable solution to their displacement. 10.68% of sites reported that IDPs prefer relocation.

Figure 5 shows the percentage of sites reporting various obstacles to returns, while figure 6 shows support IDPs need to return or reintegrate.

The demographic breakdown is shown in figure 7. Individuals with specific vulnerabilities were also reported at displacement sites and are represented in figure 8.

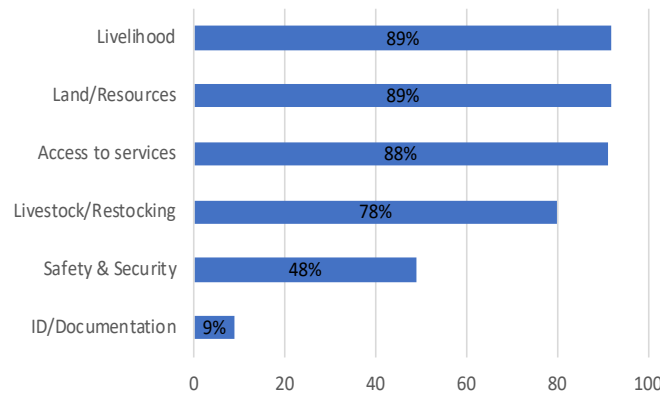


Figure 6: % Sites by support needed to return or reintegrate

Vulnerable Populations	Tigray
Breastfeeding Mothers #	1,472
Elderly headed Households	626
Elderly Persons without care givers	443
Members of ethnic minorities #	0
Members of religious minorities #	0
Orphaned Children	150
Persons w/ Chronic Diseases/Serious Medical Conditions	395
Persons w/ Disabilities # over 18	268
Persons w/ Disabilities # under 18	105
Pregnant girls # under 18	13
Pregnant Women # over 18	648
Separated Children	78
Single-female headed Households	1,550
Single-male headed Households	3,418
Unaccompanied Children	3
Single-child headed Households	4
<b>Grand Total</b>	<b>9,173</b>

Figure 4: Vulnerable populations

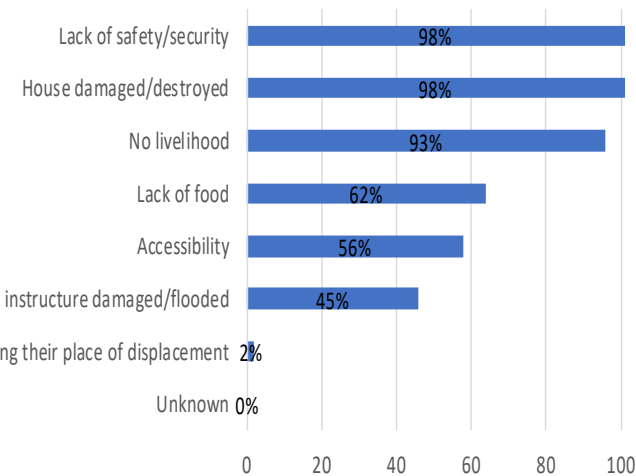


Figure 5: % Sites reporting obstacles to return

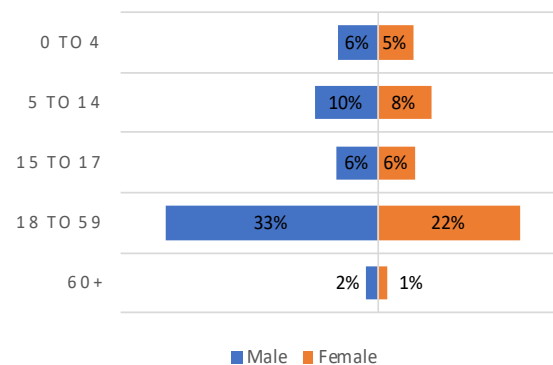


Figure 7: Demographic breakdown



## DISPLACEMENT TRACKING MATRIX (DTM) TIGRAY REGION ETHIOPIA

### ROUND 13: SEPTEMBER - OCTOBER 2018

#### Round 12 - 13 Comparison Table

INCREASE	
DECREASE	NEW
NO CHANGE	UNCOVERED/CLOSED

Zone	Woreda	Displacement Reason	Round 12			% change in estimated # of HHs	Round 11		
			HHs	Individuals	Sites		HHs	Individuals	Sites
Central	Abiyadi	Conflict	325	689	1	+31.05%	248	534	1
Central	Adwa	Conflict	1,136	1,989	1	+57.34%	722	1,267	1
Central	Ahferom	Conflict	848	4,204	6	+22.90%	690	3,909	4
Central	Axum	Conflict	859	1,961	1	+12.29%	765	1,565	1
Central	Kola Temben	Conflict	53	74	1	+3.92%	51	70	1
Central	Laelay Maychew	Conflict				-100.00%	70	98	1
Central	Mereb Leke	Conflict	669	2,732	9	+15.74%	578	2,602	8
Central	Naeder Adet	Conflict	27	53	1	0.0%			
Central	Tahtay Maychew	Conflict	150	209	1	0.0%			
Central	Tanqua Abergele	Conflict	53	84	1	+55.88%	34	59	1
Central	Werei Leke	Conflict	253	454	5	+102.40%	125	265	4
<b>Central Total</b>			<b>4,373</b>	<b>12,449</b>	<b>27</b>	<b>+33.20%</b>	<b>3,283</b>	<b>10,369</b>	<b>22</b>
Eastern	Adigrat Town	Conflict	1,172	1,904	1	+90.88%	614	1,026	1
Eastern	Atsbi Wenberta	Conflict	61	110	1	+125.93%	27	54	1
Eastern	Erob	Conflict	37	148	1	+23.33%	30	138	1
Eastern	Ganta Afeshum	Conflict	755	928	8	+16.15%	650	812	7
Eastern	Gulomekeda	Conflict	126	544	1	0.0%	126	544	1



## DISPLACEMENT TRACKING MATRIX (DTM) TIGRAY REGION ETHIOPIA

### ROUND 13: SEPTEMBER - OCTOBER 2018

Zone	Woreda	Displacement Reason	Round 12			% change in estimated # of HHs	Round 11		
			HHs	Individuals	Sites		HHs	Individuals	Sites
Eastern	Hawzen	Conflict	396	1,125	2	+48.31%	267	396	2
Eastern	Kelete Awelallo	Conflict	54	149	1	+92.86%	28	70	1
Eastern	Saesie Tsaedaemba	Conflict	236	294	1	+972.73%	22	44	1
Eastern	Wukro Town	Conflict	487	1,045	1	+167.58%	182	391	1
<b>Eastern Total</b>			<b>3,324</b>	<b>6,247</b>	<b>17</b>	<b>+70.81%</b>	<b>1,946</b>	<b>3,475</b>	<b>16</b>
Mekelle	Adihaki Sub City	Conflict	925	1,845	1	+397.31%	186	563	1
Mekelle	Ayder Sub City	Conflict	844	1,617	1	+211.44%	271	749	1
Mekelle	Hadnet Sub City	Conflict	1,621	3,991	1	+556.28%	247	623	1
Mekelle	Hawelti Sub City	Conflict	1,085	2,593	1	+128.42%	475	1,211	1
Mekelle	Kedamay Weyane Sub City	Conflict	1,162	2,007	1	+575.58%	172	357	1
Mekelle	Quiha Subcity	Conflict	309	479	1	+149.19%	124	384	1
Mekelle	Semen Sub City	Conflict	1,465	3,836	1	+117.36%	674	2,128	1
<b>Mekelle Total</b>			<b>7,411</b>	<b>16,368</b>	<b>7</b>	<b>+244.86%</b>	<b>2,149</b>	<b>6,015</b>	<b>7</b>
North Western	Asgede Tsimbila	Conflict	231	420	1	0.0%	231	325	1
North Western	Lelay Adiyabo	Climate Induced				-100.00%	100	293	1
North Western	Lelay Adiyabo	Conflict	121	211	2	+101.67%	60	107	1
North Western	Medebay Zana	Conflict	30	47	1	+25.00%	24	34	1
North Western	Sheraro Town	Conflict	70	150	1	+45.83%	48	86	1
North Western	Shire Endaselasie	Conflict	788	2,687	1	0.0%	788	2,687	1
North Western	Tahtay Koraro	Conflict	22	69	1	0.0%			
North Western	Tselemti	Conflict	581	897	1	+158.22%	225	356	1
<b>North Western Total</b>			<b>1,843</b>	<b>4,481</b>	<b>8</b>	<b>+24.86%</b>	<b>1,476</b>	<b>3,888</b>	<b>7</b>



## DISPLACEMENT TRACKING MATRIX (DTM) TIGRAY REGION ETHIOPIA

### ROUND 13: SEPTEMBER - OCTOBER 2018

Zone	Woreda	Displacement Reason	Round 12			% change in estimated # of HHs	Round 11		
			HHs	Individuals	Sites		HHs	Individuals	Sites
South East	Degua Temben	Conflict	47	95	1	+20.51%	39	69	1
South East	Enderta	Conflict	52	201	2	+13.04%	46	187	2
South East	Hintalo Wejirat	Conflict	226	552	2	+140.43%	94	264	2
South East	Saharti Samre	Conflict	50	95	2	+6.38%	47	83	2
<b>South East Total</b>			<b>375</b>	<b>943</b>	<b>7</b>	<b>+65.93%</b>	<b>226</b>	<b>603</b>	<b>7</b>
Southern	Alamata	Conflict	485	1,128	1	+49.69%	324	881	1
Southern	Endamehoni	Conflict	98	314	4	+13.95%	86	271	4
Southern	Korem Town	Conflict	137	331	1	+132.20%	59	135	1
Southern	Maychew	Conflict	214	463	1	+87.72%	114	292	1
Southern	Ofla	Conflict	36	45	1	0.0%			
Southern	Raya Alamata	Climate Induced	327	1,167	5	0.0%	327	1,168	5
Southern	Raya Alamata	Conflict	508	1,458	4	+110.79%	241	688	4
Southern	Raya Azebo	Conflict	1,199	3,338	15	+99.50%	601	1,558	5
<b>Southern Total</b>			<b>3,004</b>	<b>8,244</b>	<b>32</b>	<b>+71.46%</b>	<b>1,752</b>	<b>4,993</b>	<b>21</b>
Western	Kafta Humera	Conflict	211	305	4	+3.43%	204	295	4
Western	Setit Humera	Conflict	301	515	1	+7.50%	280	476	1
<b>Western Total</b>			<b>512</b>	<b>820</b>	<b>5</b>	<b>+5.79%</b>	<b>484</b>	<b>771</b>	<b>5</b>
<b>Climate Induced Sum</b>			<b>327</b>	<b>1,167</b>	<b>5</b>	<b>-23.42%</b>	<b>427</b>	<b>1,461</b>	<b>6</b>
<b>Conflict Sum</b>			<b>20,515</b>	<b>48,385</b>	<b>98</b>	<b>+88.40%</b>	<b>10,889</b>	<b>28,653</b>	<b>79</b>
<b>Grand Total</b>			<b>20,842</b>	<b>49,552</b>	<b>103</b>	<b>+84.18%</b>	<b>11,316</b>	<b>30,114</b>	<b>85</b>





## DISPLACEMENT TRACKING MATRIX (DTM) TIGRAY REGION ETHIOPIA ROUND 13: SEPTEMBER - OCTOBER 2018

### ABOUT DTM

#### DTM GLOBAL

The Displacement Tracking Matrix (DTM) is a system to track and monitor displacement and population mobility. It is designed to regularly and systematically capture, process and disseminate information to provide a better understanding of the movements and evolving needs of displaced populations, whether on site or en route. More information is available at [www.globaldtm.info](http://www.globaldtm.info).

#### DTM IN ETHIOPIA

In Ethiopia, data is collected at zone, woreda and site level. Since September 2016, thirteen rounds of assessments have been completed. The DTM programme is implemented in close collaboration with the National Disaster Risk Management Commission, regional, zonal and woreda counterparts and DTMs implementing partner, the Danish Refugee Council (DRC).

#### METHODOLOGY

IOM's DTM team composed of enumerators from IOM and DRC were deployed across the country to collect the data. The process involved the following steps:

Zone level: Interviews with key informants from

the Disaster Prevention and Preparedness Office (DPPO), community representatives, and the education and health offices collect information including (among others) estimated caseload of displaced population, identification of woredas within the zone that host displaced populations, reason for displacement, time of arrival of IDPs and location of origin.

Woreda level: Information is collected from key woreda informants and includes (among others) estimated length of stay, number of displaced households and individuals at woreda level, displaced population by type of temporary settlements and approximate locations of identifiable displacement sites. The information is used to plan site assessments.

Site assessments: In-depth IDP site assessments capture detailed information through key informant interviews, direct observation and focus group discussions with male, female, elderly, children and IDP representatives. Data on available services by sector, accessibility constraints, exact type, location and name of the site, place of origin of IDPs, estimated size and type of the site and most common type of shelter are captured. Age and gender disaggregation for the site is extrapolated using a demographic calculator

tool based on the age range and sex of the household members of 20 randomly selected households from the site.

*For more information:*

*Ms. Nikki Herwanger  
DTM Information Management Officer  
[NHerwanger@iom.int](mailto:NHerwanger@iom.int)*



Humanitarian Aid  
and Civil Protection





International Organization for Migration (IOM)  
The UN Migration Agency

### ANNEX I : INTERNAL DISPLACEMENTS IN TIGRAY REGION AS OF OCTOBER 2018

Zone	Woreda	Sex	Age Groups					Total	HHs	Site Open Date	Cause	Duration
			Infants (0-4 y)	Children (5-14 y)	Youth (15-17 y)	Adults (18-59 y)	Elderly (60 +y)					
Central	Abiyiadi	Female	26	52	10	155	4	247	325	06-Sep-16	Conflict	Before 2017
Central	Abiyiadi	Male	45	60	13	317	7	442				
Central	Adwa	Female	105	174	257	228	13	777	1,136	16-Aug-16	Conflict	Before 2017
Central	Adwa	Male	101	140	130	822	19	1,212				
Central	Ahferom	Female	412	501	402	495	234	2,044	565	06-Apr-15	Conflict	Before 2017
Central	Ahferom	Male	329	299	288	337	186	1,439				
Central	Ahferom	Female	7	13	44	60	26	150	54	16-Apr-15	Conflict	Before 2017
Central	Ahferom	Male	4	7	12	51	20	94				
Central	Ahferom	Female	5	11	4	34	-	54	61	16-Aug-16	Conflict	Before 2017
Central	Ahferom	Male	7	11	11	43	4	76				
Central	Ahferom	Female	14	21	16	78	5	134	147	24-Aug-16	Conflict	Before 2017
Central	Ahferom	Male	28	22	13	106	8	177				
Central	Ahferom	Female	1	-	1	10	-	12	21	28-Aug-18	Conflict	In 2018
Central	Ahferom	Male	1	4	1	17	1	24				
Central	Axum	Female	132	176	92	418	2	820	859	20-Aug-16	Conflict	Before 2017
Central	Axum	Male	149	212	90	681	9	1,141				
Central	Kola Temben	Female	3	2	-	13	-	18	53	26-Aug-16	Conflict	Before 2017
Central	Kola Temben	Male	3	2	-	51	-	56				
Central	Mereb Leke	Female	145	276	242	545	51	1,259	581	23-Apr-15	Conflict	Before 2017
Central	Mereb Leke	Male	155	318	213	584	77	1,347				
Central	Mereb Leke	Female	7	10	5	28	-	50	88	24-Aug-16	Conflict	Before 2017
Central	Mereb Leke	Male	6	8	3	59	-	76				
Central	Naeder Adet	Female	3	6	2	14	1	26	27	20-Aug-16	Conflict	Before 2017
Central	Naeder Adet	Male	3	5	2	16	1	27				
Central	Tahtay Maychew	Female	3	10	5	48	-	66	150	20-Aug-16	Conflict	Before 2017
Central	Tahtay Maychew	Male	3	13	6	120	1	143				
Central	Tanqua Abergele	Female	7	7	2	22	-	38	53	25-Aug-16	Conflict	Before 2017
Central	Tanqua Abergele	Male	3	6	4	32	1	46				
Central	Werei Leke	Female	28	31	4	115	2	180	253	24-Aug-16	Conflict	Before 2017
Central	Werei Leke	Male	29	39	10	195	1	274				
<b>Central Total</b>			<b>1,764</b>	<b>2,436</b>	<b>1,882</b>	<b>5,694</b>	<b>673</b>	<b>12,449</b>	<b>4,373</b>			
Eastern	Adigrat Town	Female	76	107	92	491	8	774	1,172	17-Jul-16	Conflict	Before 2017
Eastern	Adigrat Town	Male	81	98	90	853	8	1,130				
Eastern	Atsbi Wenberta	Female	8	3	5	23	3	42	61	20-Jul-16	Conflict	Before 2017
Eastern	Atsbi Wenberta	Male	9	12	5	38	4	68				
Eastern	Erob	Female	3	18	9	48	3	81	37	21-Sep-17	Conflict	During 2017
Eastern	Erob	Male	1	17	12	33	4	67				
Eastern	Ganta Afeshum	Female	24	30	16	135	-	205	597	23-Aug-16	Conflict	Before 2017
Eastern	Ganta Afeshum	Male	29	46	20	447	3	545				
Eastern	Ganta Afeshum	Female	4	5	5	21	-	35	158	25-Feb-18	Conflict	In 2018
Eastern	Ganta Afeshum	Male	3	4	4	132	-	143				
Eastern	Gulomekeda	Female	36	73	52	96	33	290	126	15-Feb-15	Conflict	Before 2017
Eastern	Gulomekeda	Male	22	64	48	82	38	254				
Eastern	Hawzen	Female	61	35	42	271	3	412	290	28-Aug-16	Conflict	Before 2017
Eastern	Hawzen	Male	18	25	56	486	4	589				
Eastern	Hawzen	Female	3	3	2	16	-	24	106	25-Feb-18	Conflict	In 2018
Eastern	Hawzen	Male										



International Organization for Migration (IOM)  
The UN Migration Agency

### ANNEX I : INTERNAL DISPLACEMENTS IN TIGRAY REGION AS OF OCTOBER 2018

Zone	Woreda	Sex	Age Groups					Total	HHs	Site Open Date	Cause	Duration
			Infants (0-4 y)	Children (5-14 y)	Youth (15-17 y)	Adults (18-59 y)	Elderly (60 +y)					
Eastern	Hawzen	Male	6	4	1	89	-	100				
Eastern	Kelete Awelallo	Female	3	6	11	30	2	52	54	20-Jul-16	Conflict	Before 2017
Eastern	Kelete Awelallo	Male	5	8	6	74	4	97				
Eastern	Saesie Tsaedaemba	Female	20	37	26	40	13	136	236	06-Sep-16	Conflict	Before 2017
Eastern	Saesie Tsaedaemba	Male	16	42	20	65	15	158				
Eastern	Wukro Town	Female	53	58	20	285	6	422	487	20-Jul-16	Conflict	Before 2017
Eastern	Wukro Town	Male	51	80	22	467	3	623				
<b>Eastern Total</b>			<b>532</b>	<b>775</b>	<b>564</b>	<b>4,222</b>	<b>154</b>	<b>6,247</b>	<b>3,324</b>			
Mekelle	Adihaki Sub City	Female	91	213	70	408	11	793	925	27-Aug-16	Conflict	Before 2017
Mekelle	Adihaki Sub City	Male	105	262	160	518	7	1,052				
Mekelle	Ayder Sub City	Female	124	203	77	299	3	706	844	02-Sep-16	Conflict	Before 2017
Mekelle	Ayder Sub City	Male	130	199	91	485	6	911				
Mekelle	Hadnet Sub City	Female	57	147	153	1,335	12	1,704	1,621	03-Aug-16	Conflict	Before 2017
Mekelle	Hadnet Sub City	Male	109	211	244	1,703	20	2,287				
Mekelle	Hawelti Sub City	Female	167	128	163	679	15	1,152	1,085	07-Jul-16	Conflict	Before 2017
Mekelle	Hawelti Sub City	Male	182	165	175	885	34	1,441				
Mekelle	Kedamay Weyane Sub City	Female	123	168	140	343	8	782	1,162	29-Aug-16	Conflict	Before 2017
Mekelle	Kedamay Weyane Sub City	Male	236	248	231	495	15	1,225				
Mekelle	Quiha Subcity	Female	12	21	10	163	2	208	309	05-Sep-16	Conflict	Before 2017
Mekelle	Quiha Subcity	Male	19	30	14	205	3	271				
Mekelle	Semen Sub City	Female	148	239	219	1,123	46	1,775	1,465	02-Aug-16	Conflict	Before 2017
Mekelle	Semen Sub City	Male	204	338	227	1,240	52	2,061				
<b>Mekelle Total</b>			<b>1,707</b>	<b>2,572</b>	<b>1,974</b>	<b>9,881</b>	<b>234</b>	<b>16,368</b>	<b>7,411</b>			
North Western	Asgede Tsimbila	Female	17	14	21	34	4	90	231	18-Aug-16	Conflict	Before 2017
North Western	Asgede Tsimbila	Male	24	32	22	244	8	330				
North Western	Laelay Adiyabo	Female	18	16	8	40	-	82	95	07-Aug-16	Conflict	Before 2017
North Western	Laelay Adiyabo	Male	24	18	9	47	1	99				
North Western	Laelay Adiyabo	Female	-	1	2	3	-	6	26	08-Sep-18	Conflict	In 2018
North Western	Laelay Adiyabo	Male	-	-	1	23	-	24				
North Western	Medebay Zana	Female	2	2	-	10	-	14	30	08-Aug-16	Conflict	Before 2017
North Western	Medebay Zana	Male	1	3	1	27	1	33				
North Western	Sheraro Town	Female	7	10	4	53	1	75	70	08-Aug-16	Conflict	Before 2017
North Western	Sheraro Town	Male	14	16	9	33	3	75				
North Western	Shire Endaselasia	Female	194	333	151	466	9	1,153	788	03-Aug-16	Conflict	Before 2017
North Western	Shire Endaselasia	Male	222	456	254	576	26	1,534				
North Western	Tahtay Koraro	Female	1	2	9	6	-	18	22	11-Sep-16	Conflict	Before 2017
North Western	Tahtay Koraro	Male	2	2	21	24	2	51				
North Western	Tselemti	Female	20	27	20	288	11	366	581	14-Aug-16	Conflict	Before 2017
North Western	Tselemti	Male	29	43	39	400	20	531				
<b>North Western Total</b>			<b>575</b>	<b>975</b>	<b>571</b>	<b>2,274</b>	<b>86</b>	<b>4,481</b>	<b>1,843</b>			
South East	Degua Temben	Female	4	7	13	14	-	38	47	15-Aug-16	Conflict	Before 2017
South East	Degua Temben	Male	9	13	11	23	1	57				
South East	Enderta	Female	4	9	2	16	1	32	21	15-Mar-18	Conflict	In 2018
South East	Enderta	Male	3	6	3	37	2	51				
South East	Enderta	Female	7	11	1	32	1	52	31	20-Mar-18	Conflict	In 2018
South East	Enderta	Male	4	8	2	51	1	66				



International Organization for Migration (IOM)  
The UN Migration Agency

### ANNEX I : INTERNAL DISPLACEMENTS IN TIGRAY REGION AS OF OCTOBER 2018

Zone	Woreda	Sex	Age Groups					Total	HHs	Site Open Date	Cause	Duration
			Infants (0-4 y)	Children (5-14 y)	Youth (15-17 y)	Adults (18-59 y)	Elderly (60 +y)					
South East	Hintalo Wejirat	Female	23	40	4	119	4	190	192	08-Aug-16	Conflict	Before 2017
South East	Hintalo Wejirat	Male	37	53	12	175	6	283				
South East	Hintalo Wejirat	Female	4	6	2	15	-	27	34	19-Mar-18	Conflict	In 2018
South East	Hintalo Wejirat	Male	3	13	5	28	3	52				
South East	Saharti Samre	Female	1	4	4	13	-	22	27	25-Oct-17	Conflict	During 2017
South East	Saharti Samre	Male	-	2	7	29	-	38				
South East	Saharti Samre	Female	-	1	3	7	-	11	23	28-Oct-17	Conflict	During 2017
South East	Saharti Samre	Male	-	2	4	18	-	24				
<b>South East Total</b>			<b>99</b>	<b>175</b>	<b>73</b>	<b>577</b>	<b>19</b>	<b>943</b>	<b>375</b>			
Southern	Alamata	Female	49	165	41	162	24	441	485	17-Aug-16	Conflict	Before 2017
Southern	Alamata	Male	55	342	34	228	28	687				
Southern	Endamehoni	Female	4	9	4	23	3	43	25	19-Feb-18	Conflict	In 2018
Southern	Endamehoni	Male	6	6	3	28	3	46				
Southern	Endamehoni	Female	2	9	1	15	2	29	24	20-Mar-18	Conflict	In 2018
Southern	Endamehoni	Male	4	13	3	30	-	50				
Southern	Endamehoni	Female	1	3	4	23	3	34	26	15-Apr-18	Conflict	In 2018
Southern	Endamehoni	Male	5	5	3	28	3	44				
Southern	Endamehoni	Female	2	7	2	17	2	30	23	10-Jul-18	Conflict	In 2018
Southern	Endamehoni	Male	3	9	3	19	4	38				
Southern	Korem Town	Female	13	18	19	71	-	121	137	30-Aug-16	Conflict	Before 2017
Southern	Korem Town	Male	38	21	22	129	-	210				
Southern	Maychew	Female	14	28	24	89	4	159	214	16-Jul-16	Conflict	Before 2017
Southern	Maychew	Male	18	35	38	207	6	304				
Southern	Ofla	Female	1	3	2	11	-	17	36	05-Sep-18	Conflict	In 2018
Southern	Ofla	Male	2	9	2	13	2	28				
Southern	Raya Alamata	Female	68	45	19	27	-	159	82	20-May-16	Seasonal Flood	Before 2017
Southern	Raya Alamata	Male	76	61	28	36	8	209				
Southern	Raya Alamata	Female	73	42	27	19	9	170	104	23-Jul-16	Seasonal Flood	Before 2017
Southern	Raya Alamata	Male	79	52	22	24	7	184				
Southern	Raya Alamata	Female	8	15	27	44	17	111	112	15-Aug-17	Seasonal Flood	During 2017
Southern	Raya Alamata	Male	19	33	48	78	47	225				
Southern	Raya Alamata	Female	14	18	9	9	4	54	29	16-Aug-17	Seasonal Flood	During 2017
Southern	Raya Alamata	Male	16	13	11	8	7	55				
Southern	Raya Alamata	Female	20	38	18	123	8	207	192	16-Oct-17	Conflict	During 2017
Southern	Raya Alamata	Male	28	74	21	194	13	330				
Southern	Raya Alamata	Female	31	53	29	102	16	231	176	17-Oct-17	Conflict	During 2017
Southern	Raya Alamata	Male	14	60	8	139	20	241				
Southern	Raya Alamata	Female	7	11	3	43	5	69	65	22-Jan-18	Conflict	In 2018
Southern	Raya Alamata	Male	9	27	6	79	8	129				
Southern	Raya Alamata	Female	6	24	9	80	4	123	75	10-Mar-18	Conflict	In 2018
Southern	Raya Alamata	Male	9	34	8	69	8	128				
Southern	Raya Azebo	Female	38	107	62	297	15	519	414	24-Aug-16	Conflict	Before 2017
Southern	Raya Azebo	Male	49	132	80	381	17	659				
Southern	Raya Azebo	Female	9	18	7	69	2	105	85	16-Feb-18	Conflict	In 2018
Southern	Raya Azebo	Male	14	28	14	103	14	173				
Southern	Raya Azebo	Female	22	26	13	91	6	158	180	13-Mar-18	Conflict	In 2018





International Organization for Migration (IOM)  
The UN Migration Agency

### ANNEX I : INTERNAL DISPLACEMENTS IN TIGRAY REGION AS OF OCTOBER 2018

Zone	Woreda	Sex	Age Groups					Total	HHs	Site Open Date	Cause	Duration
			Infants (0-4 y)	Children (5-14 y)	Youth (15-17 y)	Adults (18-59 y)	Elderly (60 +y)					
Southern	Raya Azebo	Male	35	22	18	143	16	234				
Southern	Raya Azebo	Female	12	24	21	49	4	110	108	16-Mar-18	Conflict	In 2018
Southern	Raya Azebo	Male	20	38	21	106	11	196				
Southern	Raya Azebo	Female	5	11	8	28	2	54	38	03-Sep-18	Conflict	In 2018
Southern	Raya Azebo	Male	9	17	10	42	7	85	63	05-Sep-18	Conflict	In 2018
Southern	Raya Azebo	Female	9	15	14	34	2	74				
Southern	Raya Azebo	Male	13	20	24	77	11	145				
Southern	Raya Azebo	Female	3	7	3	16	1	30	25	06-Sep-18	Conflict	In 2018
Southern	Raya Azebo	Male	5	9	6	22	2	44				
Southern	Raya Azebo	Female	13	25	22	73	8	141				
Southern	Raya Azebo	Male	21	35	27	123	11	217	142	07-Sep-18	Conflict	In 2018
Southern	Raya Azebo	Female	13	29	25	71	11	149	144	08-Sep-18	Conflict	In 2018
Southern	Raya Azebo	Male	24	39	41	129	12	245				
<b>Southern Total</b>			<b>1,008</b>	<b>1,884</b>	<b>914</b>	<b>4,021</b>	<b>417</b>	<b>8,244</b>	<b>3,004</b>			
Western	Kafta Humera	Female	1	3	-	7	-	11	22	03-Aug-16	Conflict	Before 2017
Western	Kafta Humera	Male	1	2	-	13	2	18				
Western	Kafta Humera	Female	4	20	3	39	-	66	126	08-Aug-16	Conflict	Before 2017
Western	Kafta Humera	Male	7	15	1	84	4	111				
Western	Kafta Humera	Female	2	1	2	9	1	15	28	19-Aug-16	Conflict	Before 2017
Western	Kafta Humera	Male	2	7	4	15	2	30				
Western	Kafta Humera	Female	6	6	-	14	1	27	35	25-Aug-16	Conflict	Before 2017
Western	Kafta Humera	Male	1	2	2	20	2	27				
Western	Setit Humera	Female	20	16	14	114	7	171	301	20-Jul-16	Conflict	Before 2017
Western	Setit Humera	Male	10	23	11	283	17	344				
<b>Western Total</b>			<b>54</b>	<b>95</b>	<b>37</b>	<b>598</b>	<b>36</b>	<b>820</b>	<b>512</b>			
<b>Grand Total</b>			<b>5,739</b>	<b>8,912</b>	<b>6,015</b>	<b>27,267</b>	<b>1,619</b>	<b>49,552</b>	<b>20,842</b>			

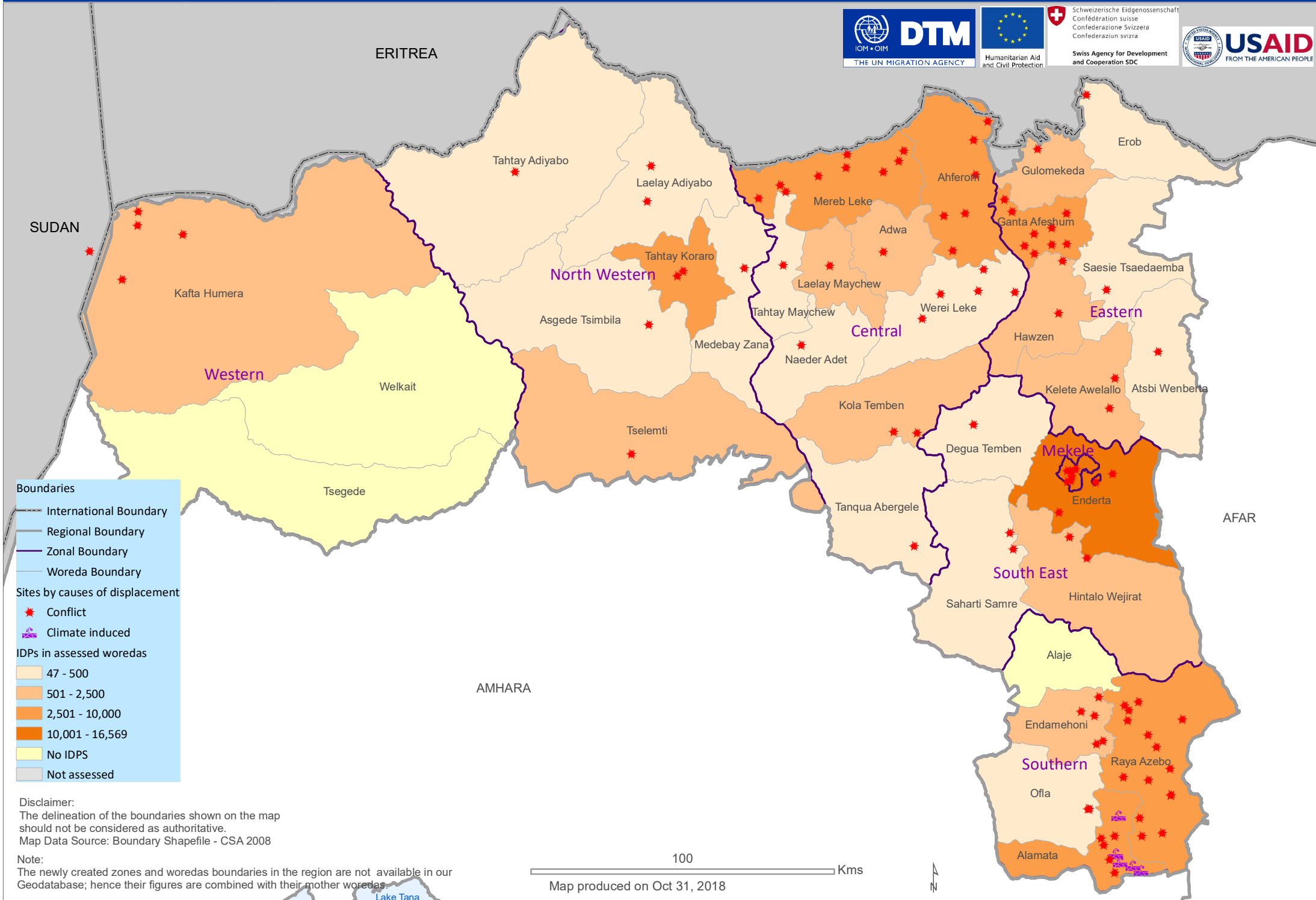
**Disclaimer:** Age and gender disaggregation for the site is extrapolated using a demographic calculator tool based on the age range and sex of the household members of 20 randomly selected households from the site.

#### Displacement Tracking Matrix (DTM) conducted in collaboration with Danish Refugee Council (DRC)



DTM made possible thanks to the European Civil Protection and Humanitarian Aid Operations (ECHO), the Ethiopian Humanitarian Fund (EHF), the Office of United States Foreign Disaster Assistance (OFDA) and the Swiss agency for Development and Cooperation (SDC).

*The opinions expressed in this report are those of the authors and do not necessarily reflect the views of the Office of United States Foreign Disaster Assistance.*



**Boundaries**

- International Boundary
- Regional Boundary
- Zonal Boundary
- Woreda Boundary

**Sites by causes of displacement**

- Conflict
- Climate induced

**IDPs in assessed woredas**

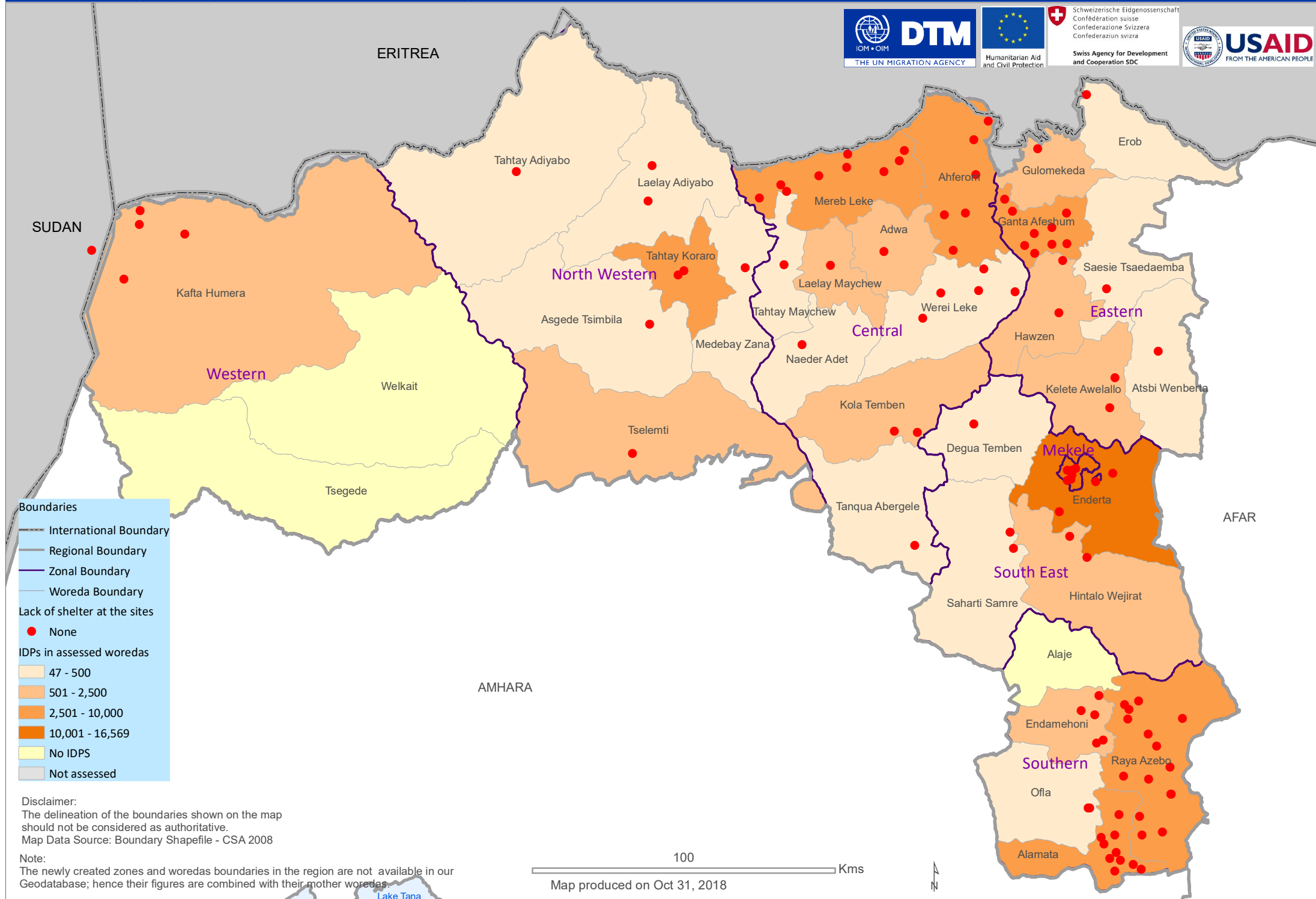
- 47 - 500
- 501 - 2,500
- 2,501 - 10,000
- 10,001 - 16,569
- No IDPS
- Not assessed

Disclaimer:  
 The delineation of the boundaries shown on the map should not be considered as authoritative.  
 Map Data Source: Boundary Shapefile - CSA 2008

Note:  
 The newly created zones and woredas boundaries in the region are not available in our Geodatabase; hence their figures are combined with their mother woredas.

100 Kms  
 Map produced on Oct 31, 2018

# Annex III - Tigray region households reporting lack of shelter at the sites and IDPs in assessed woredas DTM round thirteen (01/09 - 30/09, 2018)



**Boundaries**

- International Boundary
- Regional Boundary
- Zonal Boundary
- Woreda Boundary

**Lack of shelter at the sites**

- None

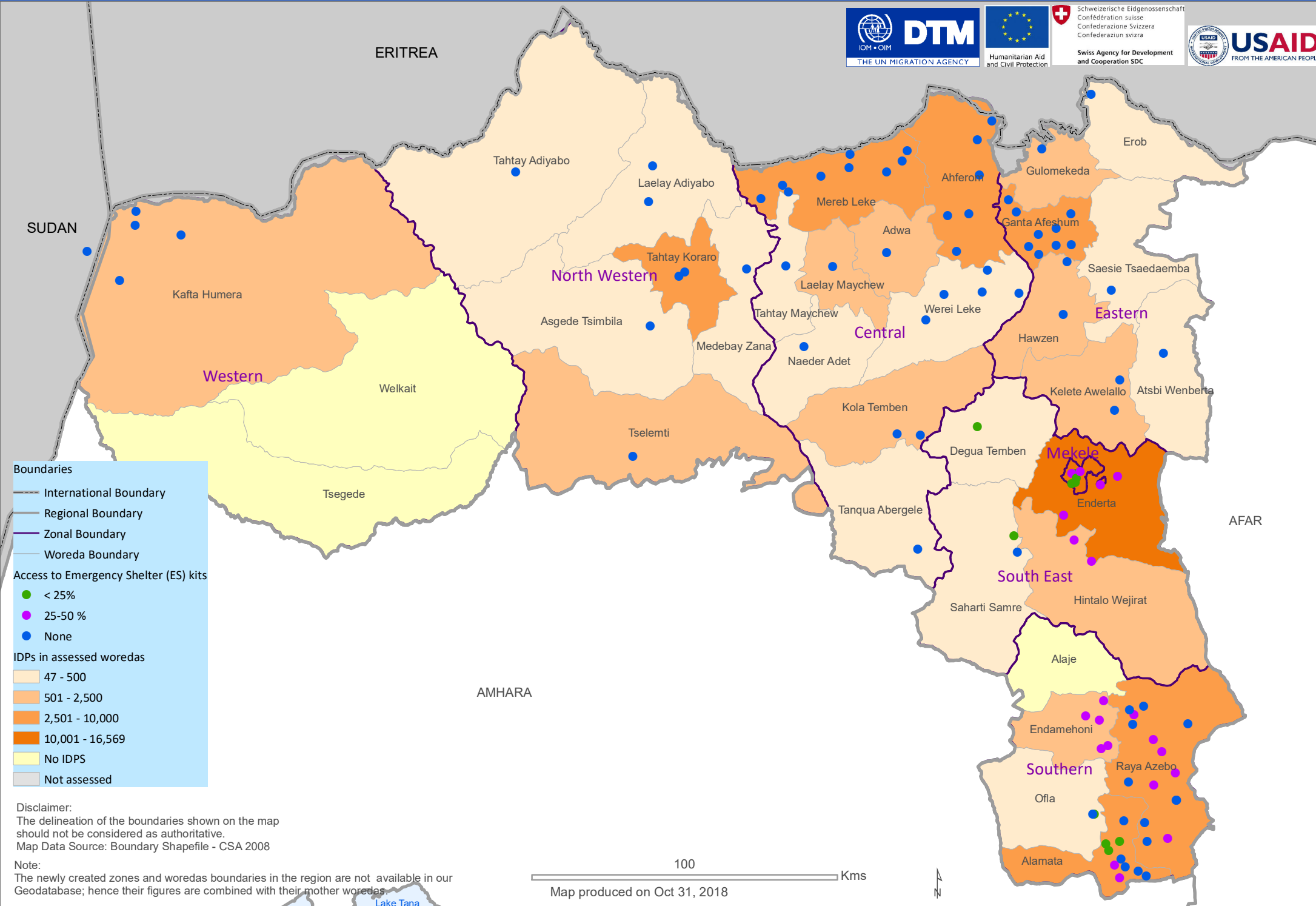
**IDPs in assessed woredas**

- 47 - 500
- 501 - 2,500
- 2,501 - 10,000
- 10,001 - 16,569
- No IDPS
- Not assessed

Disclaimer:  
The delineation of the boundaries shown on the map should not be considered as authoritative.  
Map Data Source: Boundary Shapefile - CSA 2008

Note:  
The newly created zones and woredas boundaries in the region are not available in our Geodatabase; hence their figures are combined with their mother woredas.

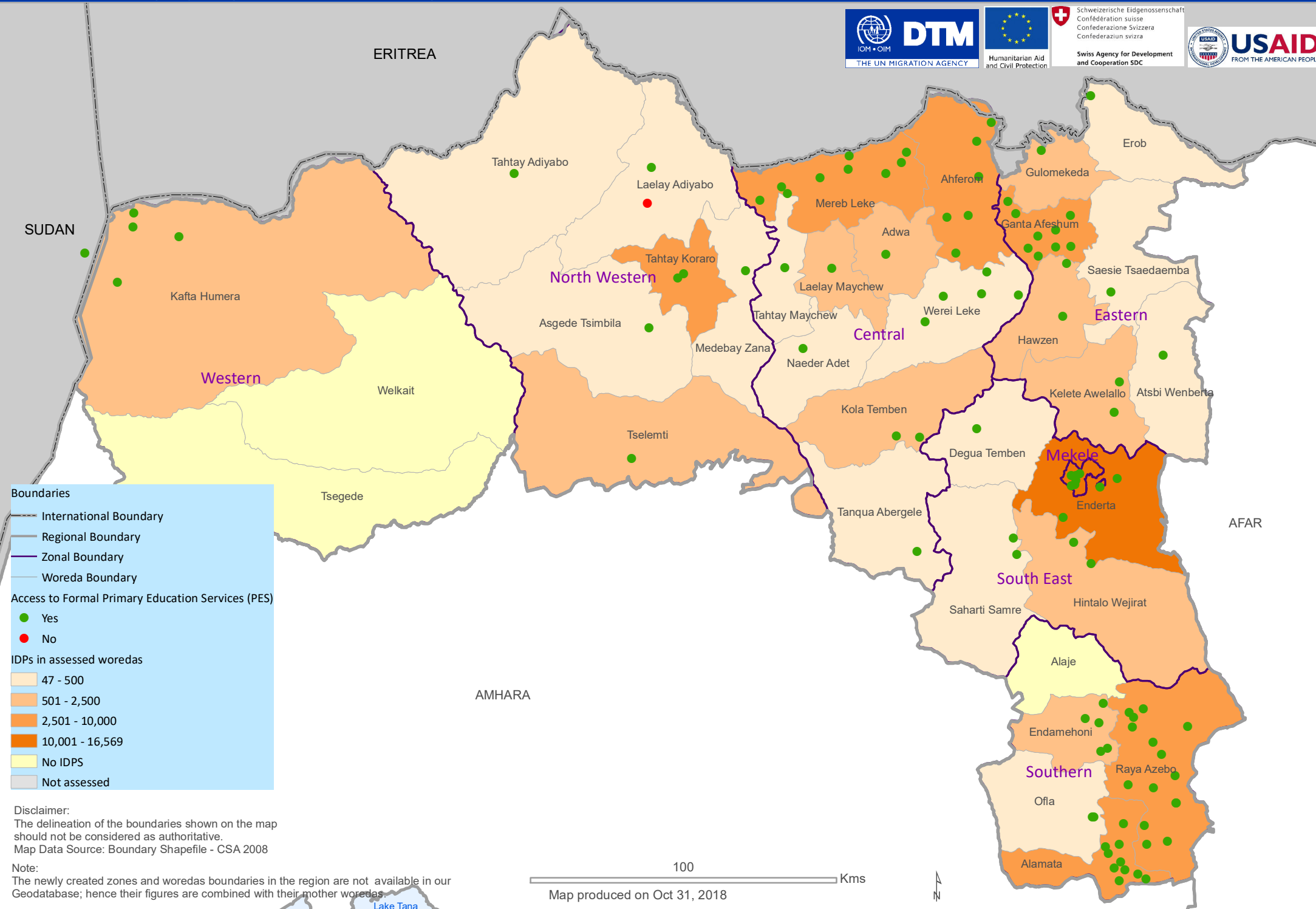
100 Kms  
Map produced on Oct 31, 2018



Disclaimer:  
 The delineation of the boundaries shown on the map should not be considered as authoritative.  
 Map Data Source: Boundary Shapefile - CSA 2008

Note:  
 The newly created zones and woredas boundaries in the region are not available in our Geodatabase; hence their figures are combined with their mother woredas.





**Boundaries**

- International Boundary
- Regional Boundary
- Zonal Boundary
- Woreda Boundary

**Access to Formal Primary Education Services (PES)**

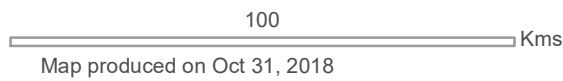
- Yes
- No

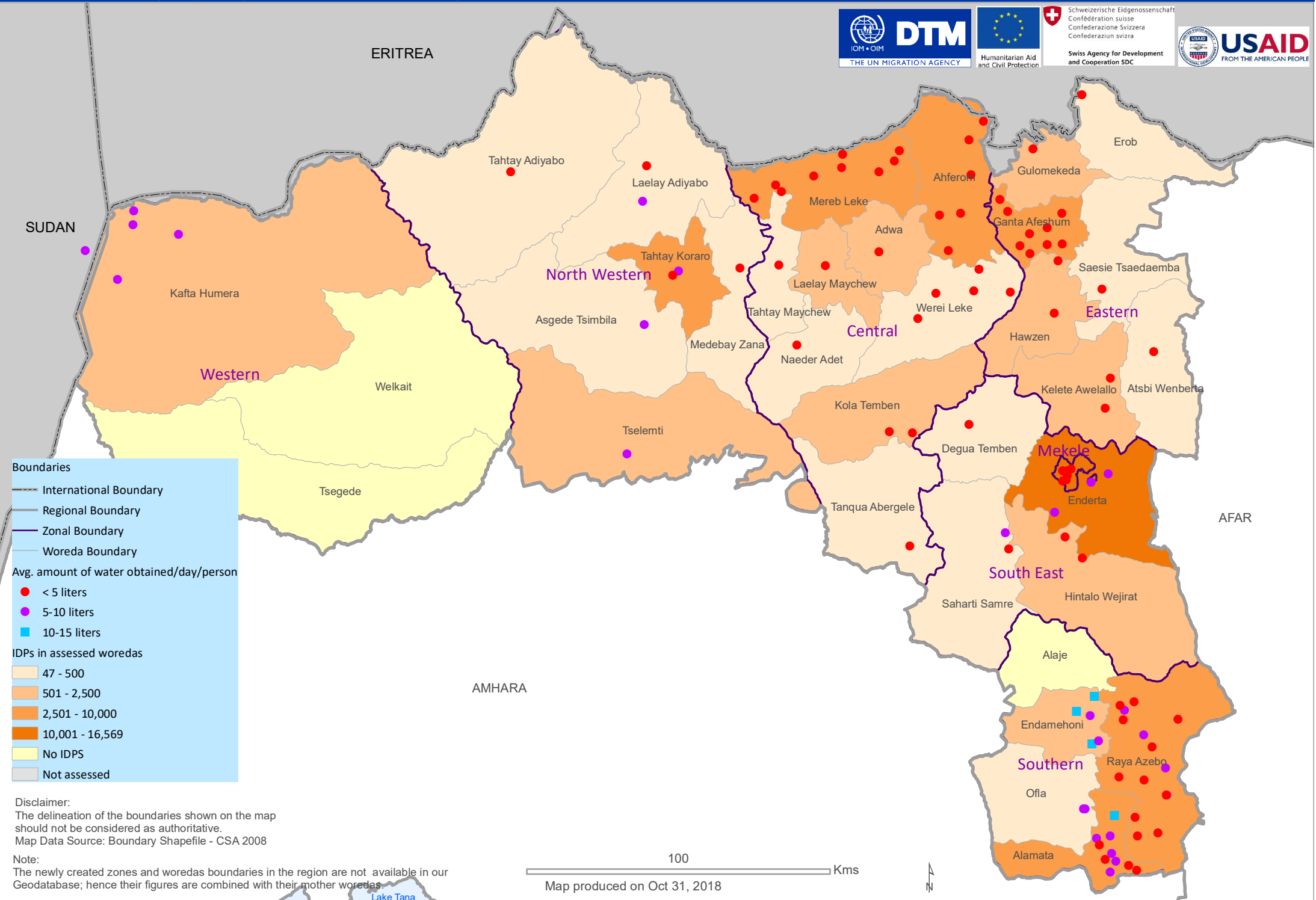
**IDPs in assessed woredas**

- 47 - 500
- 501 - 2,500
- 2,501 - 10,000
- 10,001 - 16,569
- No IDPS
- Not assessed

Disclaimer:  
 The delineation of the boundaries shown on the map should not be considered as authoritative.  
 Map Data Source: Boundary Shapefile - CSA 2008

Note:  
 The newly created zones and woredas boundaries in the region are not available in our Geodatabase; hence their figures are combined with their mother woredas.





**Boundaries**

- International Boundary
- Regional Boundary
- Zonal Boundary
- Woreda Boundary

**Avg. amount of water obtained/day/person**

- < 5 liters
- 5-10 liters
- 10-15 liters

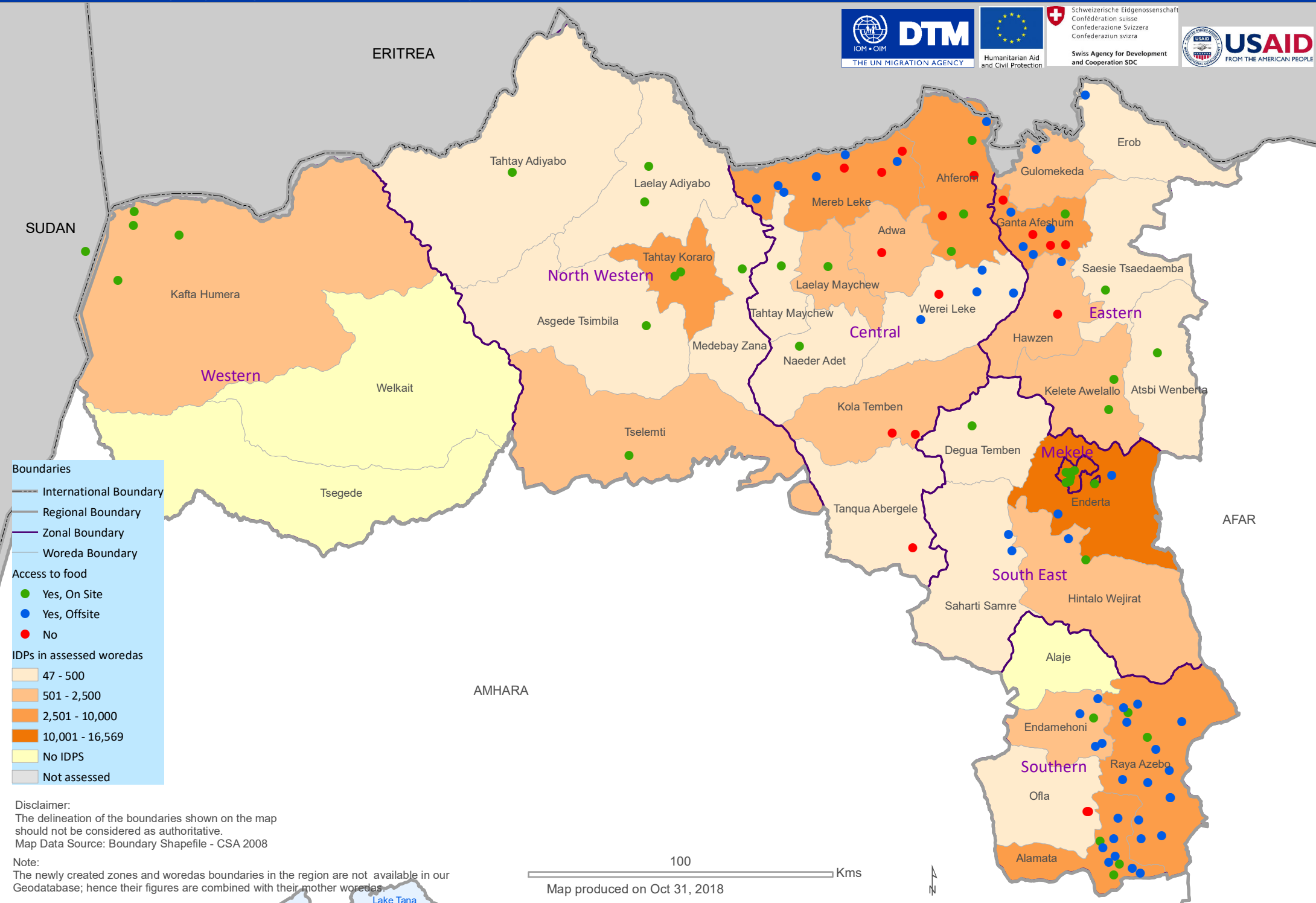
**IDPs in assessed woredas**

- 47 - 500
- 501 - 2,500
- 2,501 - 10,000
- 10,001 - 16,569
- No IDPS
- Not assessed

Disclaimer:  
 The delineation of the boundaries shown on the map should not be considered as authoritative.  
 Map Data Source: Boundary Shapefile - CSA 2008

Note:  
 The newly created zones and woredas boundaries in the region are not available in our Geodatabase; hence their figures are combined with their mother woredas.

100 Kms  
 Map produced on Oct 31, 2018



**Boundaries**

- International Boundary
- Regional Boundary
- Zonal Boundary
- Woreda Boundary

**Access to food**

- Yes, On Site
- Yes, Offsite
- No

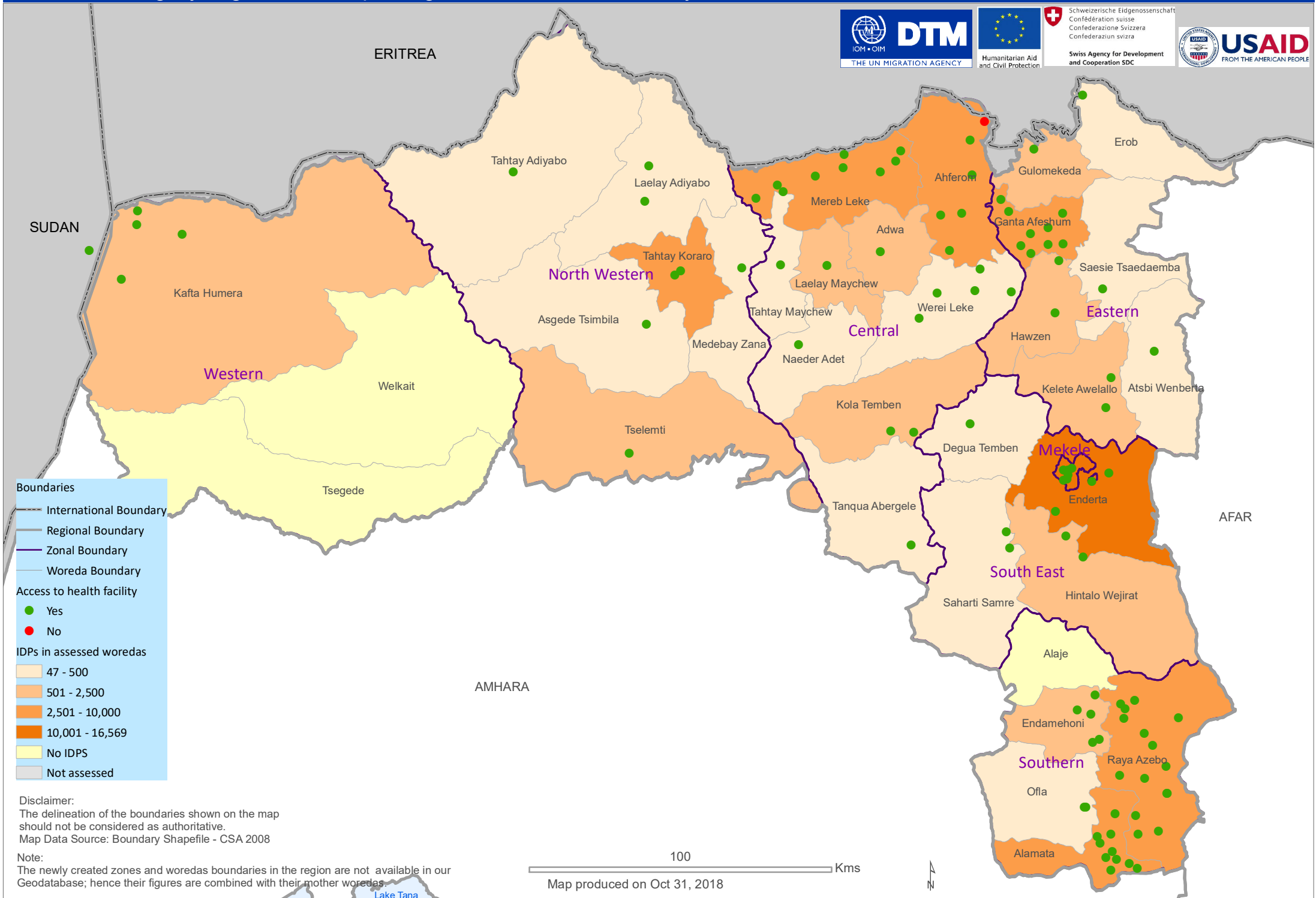
**IDPs in assessed woredas**

- 47 - 500
- 501 - 2,500
- 2,501 - 10,000
- 10,001 - 16,569
- No IDPS
- Not assessed

Disclaimer:  
 The delineation of the boundaries shown on the map should not be considered as authoritative.  
 Map Data Source: Boundary Shapefile - CSA 2008

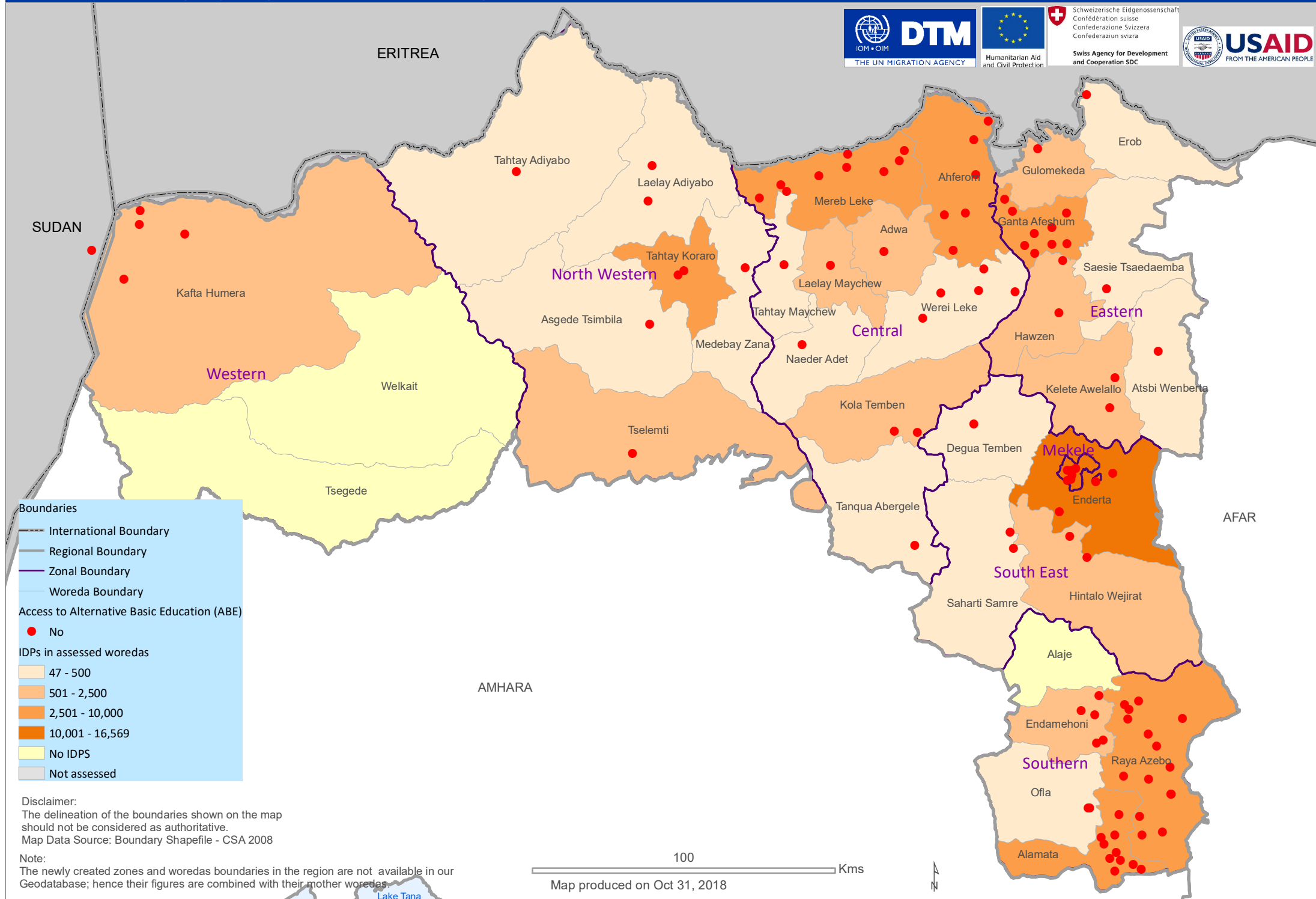
Note:  
 The newly created zones and woredas boundaries in the region are not available in our Geodatabase; hence their figures are combined with their mother woredas.

100 Kms  
 Map produced on Oct 31, 2018





# Annex VIII - Tigray region sites reporting access to ABE and IDPs in assessed woredas DTM round thirteen (01/09 - 30/09, 2018)



**Boundaries**

- International Boundary
- Regional Boundary
- Zonal Boundary
- Woreda Boundary

**Access to Alternative Basic Education (ABE)**

- No

**IDPs in assessed woredas**

- 47 - 500
- 501 - 2,500
- 2,501 - 10,000
- 10,001 - 16,569
- No IDPS
- Not assessed

**Disclaimer:**  
 The delineation of the boundaries shown on the map should not be considered as authoritative.  
 Map Data Source: Boundary Shapefile - CSA 2008

**Note:**  
 The newly created zones and woredas boundaries in the region are not available in our Geodatabase; hence their figures are combined with their mother woredas.

100 Kms  
 Map produced on Oct 31, 2018