



DISPLACEMENT TRACKING MATRIX (DTM) AMHARA REGION, ETHIOPIA
ROUND 13: SEPTEMBER/OCTOBER 2018
Summary of key findings

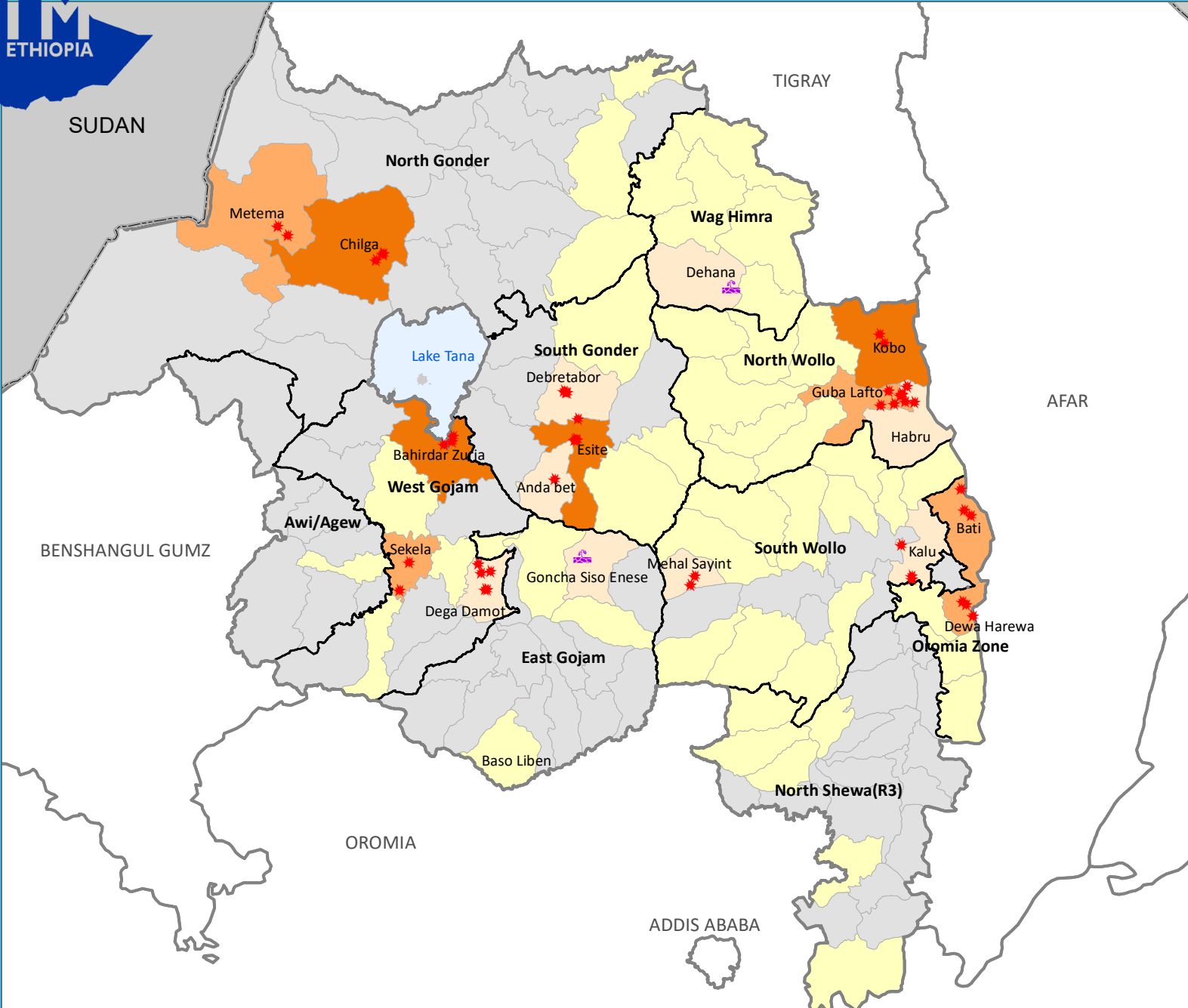




DISPLACEMENT TRACKING MATRIX (DTM) AMHARA, ETHIOPIA ROUND 13: SEPTEMBER/OCTOBER 2018



OVERVIEW OF DISPLACEMENT AMHARA REGION DTM Round 13 FROM SEPTEMBER 1 - 30, 2018



Sites by causes of displacement

- ★ Conflict
- ☄ Climate induced

IDPs in assessed woredas

- 95 - 500
- 501 - 1,000
- 1,001 - 2,646
- No IDPS
- Not assessed

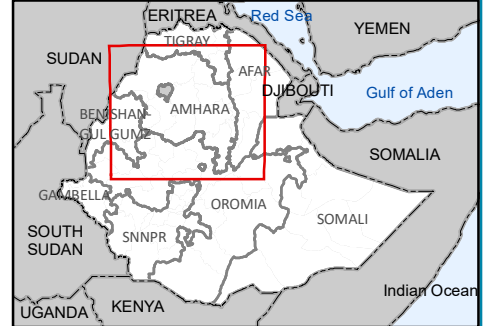
Boundaries

- International Boundary
- Regional Boundary
- Zonal Boundary
- Woreda Boundary

0 20 40 80 120 Kilometers

Sources : IOM Map production date : 31 Oct 2018
 This map is for illustration purposes only. Names and boundaries on this map do not imply official endorsement or acceptance by IOM.
 Map Data Source: Boundary shapefile - CSA 2008

www.displacement.iom.int/ethiopia
dtmethiopia@iom.int



Note: The newly created zones and woredas boundaries in this region are not available in our Geodatabase; hence their boundaries and figures are combined with their mother zones and woredas.



DISPLACEMENT TRACKING MATRIX (DTM) AMHARA REGION ETHIOPIA ROUND 13: SEPTEMBER - OCTOBER 2018

AMHARA REGION - KEY FINDINGS

LOCATION AND CAUSE OF DISPLACEMENT: 11,821 displaced individuals comprising 3,732 households in 47 displacement sites were identified in AMHARA region. These figures represent an increase of 6,038 in the total individuals (104.41%) an increase of 2,232 households (148.80%) and an increase of 13 sites (38.24%) since round 12 July/August 2018. 48.94% sites opened in 2017 and 19.15% opened in 2018. Conflict was the primary cause of displacement for an estimated 97.91% of the displaced population.

DEMOGRAPHICS: 51.02% of displaced individuals were female and 48.98% were male. 44.53% were younger than 18 years old. 2.31% were over 60 years old.

SHELTER: 5 sites reported that over 25% of households were living in shelters that were below regional and cultural standards.

WASH: Only 0 sites meet SPHERE standards of access to over 15 liters of water per person per day. 15 (31.91%) displacement sites reported having no latrines.

FOOD, NUTRITION AND LIVELIHOODS: 30 (63.83%) sites, representing 5,685 individuals, reported no access to food. 95.74% of sites reported that IDPs did not have access to income generating activities.

HEALTH: Malaria was the primary health concern in this round of data collection with 12 sites reporting this.

EDUCATION: In 12.77% of sites 50% or less of the children on site are attending formal primary school. Formal primary school education is available at 78.72% sites. Alternative basic education (ABE) is available at 1 sites.

COMMUNICATION: 42.55% of sites reported that Local Leader were IDPs primary source of information followed by Families/Friends at 36.17% of sites.

Figure 1 illustrates trends in stock totals of displacement in the region over time compared to recent displacement. Figure 2 shows IDP numbers disaggregated by cause over time.

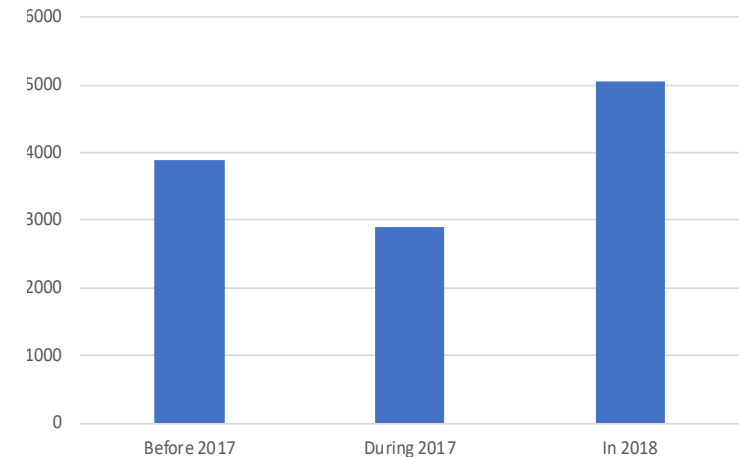


Figure 1: Trends in stock totals of displacement and new displacements from 2017 and 2018

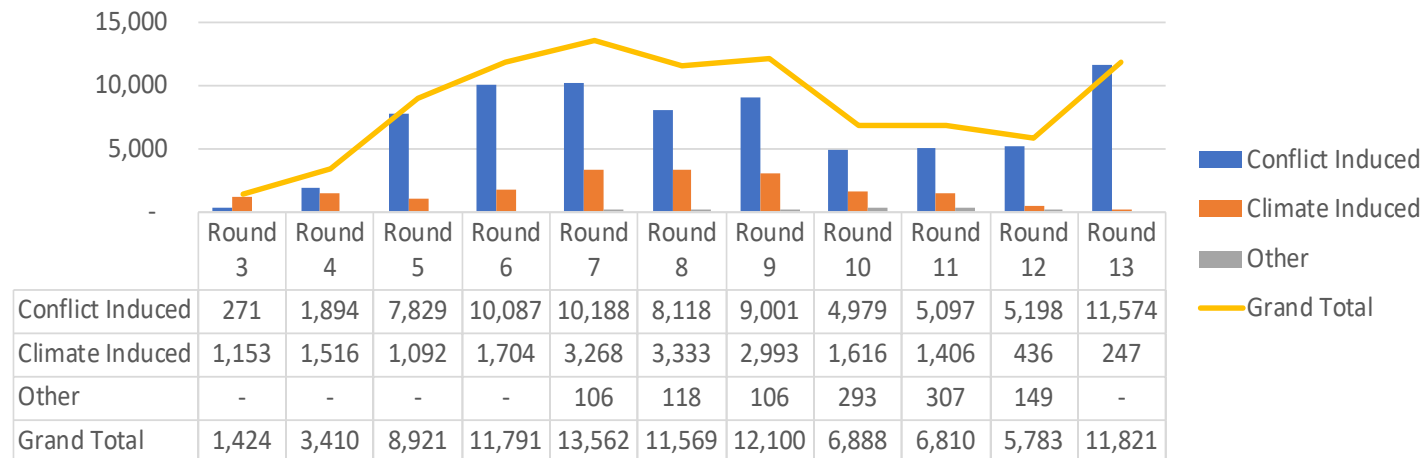


Figure 2: IDPs by cause of displacement by round



DISPLACEMENT TRACKING MATRIX (DTM) AMHARA REGION ETHIOPIA ROUND 13: SEPTEMBER - OCTOBER 2018

MOBILITY TRENDS AND CAUSE OF DISPLACEMENT

Conflict has consistently been reported as the primary cause of displacement in the region (as indicated by figure 4). IDPs displaced in 2018, in 2017 and before 2017 reported being displaced by Conflict. In addition to this 26.03% of IDPs reported being displaced previously. Furthermore, IDPs from 16 sites were leaving the current place of displacement. Of these, IDPs from 3 sites were going to the nearest village and IDPs from 4 sites intended to return to their place of origin.

Regarding the duration of sites: 19.15% of all sites identified opened in 2018 while 48.94% opened between January and December 2017 and 31.91% of sites opened before 2017.

27.50% of IDPs in the region are internally displaced from the region, within the region. Of the IDPs displaced within the region, 18.86% were displaced within their zone of origin.

Figure 3 shows the number of IDPs displaced by zone and cause of displacement. Figure 4 shows the distribution of IDPs by driver of displacement and time of displacement.

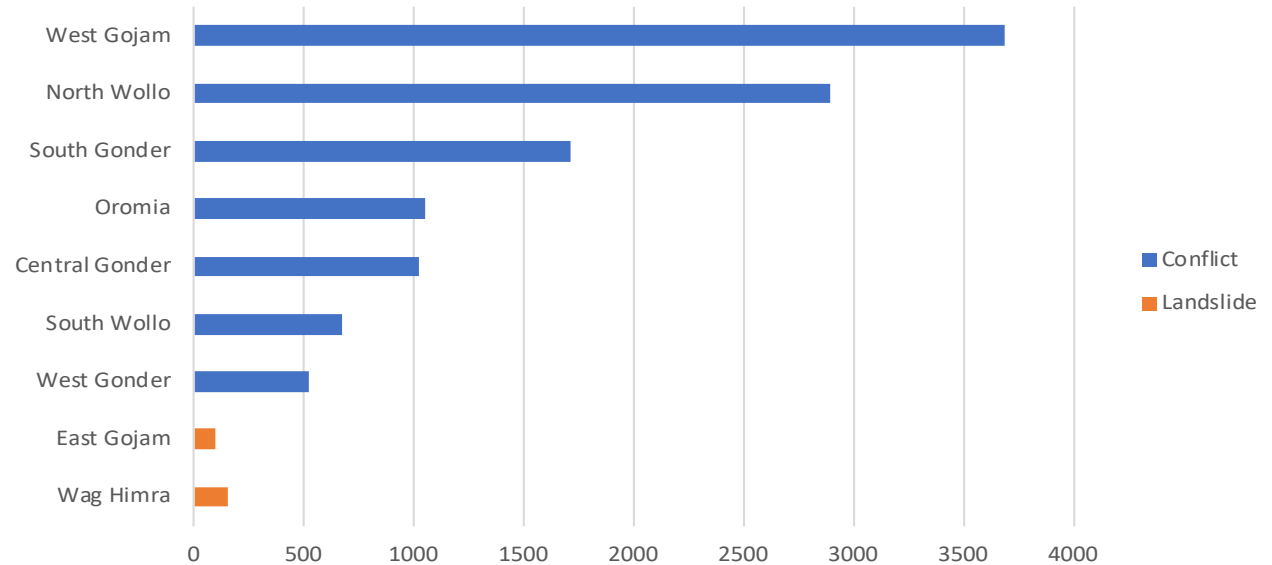


Figure 3: IDPs displaced by zone and cause of displacement

Duration	Conflict Induced	Climate Induced	Grand Total
Before 2017	3,891		3,891
During 2017	2,736	152	2,888
In 2018	4,947	95	5,042
Grand Total	11,574	247	11,821

Figure 4: Distribution of IDPs by cause of displacement and time of displacement



DISPLACEMENT TRACKING MATRIX (DTM) AMHARA REGION ETHIOPIA

ROUND 13: SEPTEMBER - OCTOBER 2018

DURABLE SOLUTIONS, VULNERABILITIES AND DEMOGRAPHICS

At 34.04% of sites IDPs foresaw a resolution to their displacement, while IDPs at 65.96% of sites did not.

At 40.43% of sites IDPs prefer reintegration as a durable solution to their displacement while at 14.89% sites they prefer return. 44.68% of sites reported that IDPs prefer relocation.

Figure 5 shows the percentage of sites reporting various obstacles to returns, while figure 6 shows support IDPs need to return or reintegrate.

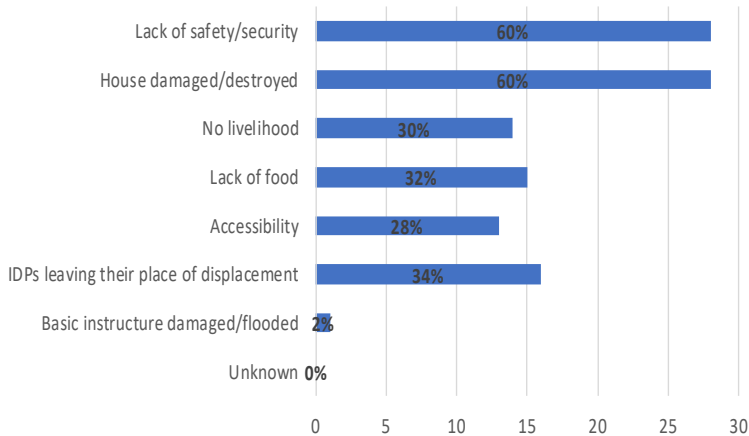


Figure 5: % Sites reporting obstacles to return

The demographic breakdown is shown in figure 7. Individuals with specific vulnerabilities were also reported at displacement sites and are represented in figure 8.

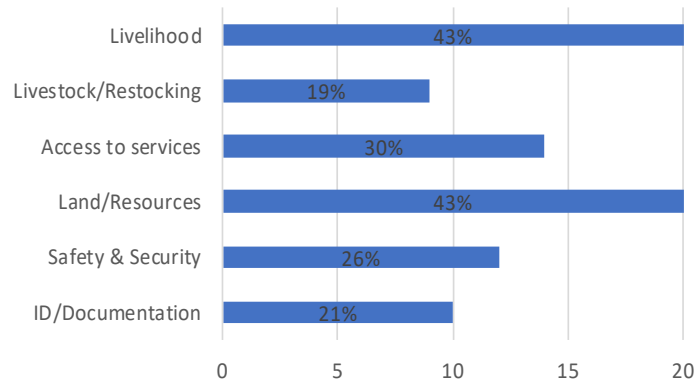


Figure 6: % Sites by support needed to return or reintegrate

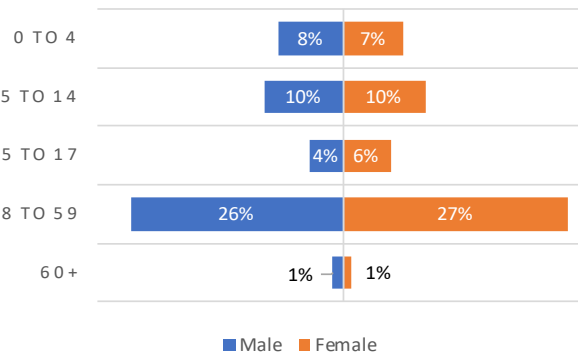


Figure 7: Demographic breakdown

Vulnerable Populations	Amhara
Breastfeeding Mothers #	364
Elderly headed Households	10
Elderly Persons without care givers	14
Members of ethnic minorities #	0
Members of religious minorities #	0
Orphaned Children	4
Persons w/ Chronic Diseases/Serious Medical Conditions	42
Persons w/ Disabilities # over 18	17
Persons w/ Disabilities # under 18	11
Pregnant girls # under 18	6
Pregnant Women # over 18	80
Separated Children	0
Single-female headed Households	275
Single-male headed Households	131
Unaccompanied Children	0
Single-child headed Households	0
Grand Total	954

Figure 4: Vulnerable populations



DISPLACEMENT TRACKING MATRIX (DTM) AMHARA REGION ETHIOPIA

ROUND 13: SEPTEMBER - OCTOBER 2018

Round 12 - 13 Comparison Table

INCREASE	
DECREASE	NEW
NO CHANGE	UNCOVERED/CLOSED

Zone	Woreda	Displacement Reason	Round 13			% change in estimated # of HHs	Round 12		
			HHs	Individuals	Sites		HHs	Individuals	Sites
Central Gonder	Aykel City Administrarion	Conflict	216	866	2	0.0%	216	866	2
Central Gonder	Chilga	Conflict	31	154	1	0.0%	31	154	1
Central Gonder Total			247	1,020	3	0.0%	247	1,020	3
East Gojam	Baso Liben	Climate Induced	-	-	-	-100.00%	72	284	1
East Gojam	Goncha Siso Enese	Climate Induced	22	95	1	0.0%			
East Gojam Total			22	95	1	-69.44%	72	284	1
North Wollo	Guba Lafto	Conflict	284	860	7	+32.09%	215	677	6
North Wollo	Habru	Conflict	98	200	2	+24.05%	79	181	2
North Wollo	Kobo	Conflict	609	1,835	2	+485.58%	104	437	4
North Wollo Total			991	2,895	11	+148.99%	398	1,295	12
Oromia	Bati	Conflict	107	537	3	0.0%	107	565	3
Oromia	Dewa Harewa	Conflict	100	512	3	-8.26%	109	611	3
Oromia Total			207	1,049	6	-4.17%	216	1,176	6
South Gonder	Anda Bet	Conflict	57	181	1	+11.76%	51	181	1
South Gonder	Debre Tabor City Administration	Conflict	138	378	3	0.0%			
South Gonder	Esite	Conflict	384	1,157	4	0.0%			
South Gonder Total			579	1,716	8	+1035.29%	51	181	1
South Wollo	Kalu	Conflict	121	464	3	0.0%			
South Wollo	Mehal Sayint	Conflict	62	215	2	-58.67%	150	214	2
South Wollo Total			183	679	5	+22.00%	150	214	2



DISPLACEMENT TRACKING MATRIX (DTM) AMHARA REGION ETHIOPIA

ROUND 13: SEPTEMBER - OCTOBER 2018

Zone	Woreda	Displacement Reason	Round 13			% change in estimated # of HHs	Round 12		
			HHs	Individuals	Sites		HHs	Individuals	Sites
Wag Himra	Dehana	Climate Induced	25	152	1	0.0%	25	152	1
Wag Himra	Dehana	Other	-	-	-	-100.00%	33	149	1
Wag Himra Total			25	152	1	-56.90%	58	301	2
West Gojam	Bahirdar Zuria	Conflict	1,085	2,646	3	0.0%			
West Gojam	Dega Damot	Conflict	138	440	5	+25.45%	110	381	4
West Gojam	Sekela	Conflict	132	605	2	+76.00%	75	338	1
West Gojam Total			1,355	3,691	10	+632.43%	185	719	5
West Gonder	Metema	Conflict	123	524	2	0.0%	123	593	2
West Gonder Total			123	524	2	0.0%	123	593	2
Climate Induced Sum			47	247	2	-51.55%	97	436	2
Conflict Sum			3,685	11,574	45	+168.98%	1,370	5,198	31
Other Sum						-100.00%	33	149	1
Grand Total			3,732	11,821	47	+148.80%	1,500	5,783	34



DISPLACEMENT TRACKING MATRIX (DTM) AMHARA REGION ETHIOPIA ROUND 13: SEPTEMBER - OCTOBER 2018

ABOUT DTM

DTM GLOBAL

The Displacement Tracking Matrix (DTM) is a system to track and monitor displacement and population mobility. It is designed to regularly and systematically capture, process and disseminate information to provide a better understanding of the movements and evolving needs of displaced populations, whether on site or en route. More information is available at www.globaldtm.info.

DTM IN ETHIOPIA

In Ethiopia, data is collected at zone, woreda and site level. Since September 2016, thirteen rounds of assessments have been completed. The DTM programme is implemented in close collaboration with the National Disaster Risk Management Commission, regional, zonal and woreda counterparts and DTMs implementing partner, the Danish Refugee Council (DRC).

METHODOLOGY

IOM's DTM team composed of enumerators from IOM and DRC were deployed across the country to collect the data. The process involved the following steps:

Zone level: Interviews with key informants from

the Disaster Prevention and Preparedness Office (DPPO), community representatives, and the education and health offices collect information including (among others) estimated caseload of displaced population, identification of woredas within the zone that host displaced populations, reason for displacement, time of arrival of IDPs and location of origin.

Woreda level: Information is collected from key woreda informants and includes (among others) estimated length of stay, number of displaced households and individuals at woreda level, displaced population by type of temporary settlements and approximate locations of identifiable displacement sites. The information is used to plan site assessments.

Site assessments: In-depth IDP site assessments capture detailed information through key informant interviews, direct observation and focus group discussions with male, female, elderly, children and IDP representatives. Data on available services by sector, accessibility constraints, exact type, location and name of the site, place of origin of IDPs, estimated size and type of the site and most common type of shelter are captured. Age and gender disaggregation for the site is extrapolated using a demographic calculator

tool based on the age range and sex of the household members of 20 randomly selected households from the site.

For more information:

*Ms. Nikki Herwanger
DTM Information Management Officer
NHerwanger@iom.int*



Humanitarian Aid
and Civil Protection





International Organization for Migration (IOM)
The UN Migration Agency

ANNEX I : INTERNAL DISPLACEMENTS IN AMHARA REGION AS OF OCTOBER 2018

Zone	Woreda	Sex	Age Groups					Total	HHs	Site Open Date	Cause	Duration
			Infants (0-4 y)	Children (5-14 y)	Youth (15-17 y)	Adults (18-59 y)	Elderly (60 +y)					
Central Gonder	Aykel City Administrarion	Female	68	89	39	232	17	445	216	11-Dec-15	Conflict	Before 2017
Central Gonder	Aykel City Administrarion	Male	55	99	64	199	4	421				
Central Gonder	Chilga	Female	6	15	7	49	1	78	31	15-Dec-15	Conflict	Before 2017
Central Gonder	Chilga	Male	7	16	10	42	1	76				
Central Gonder Total			136	219	120	522	23	1,020	247			
East Gojam	Goncha Siso Enese	Female	10	21	23	2	3	59	22	27-Aug-18	Landslide	In 2018
East Gojam	Goncha Siso Enese	Male	5	6	15	7	3	36				
East Gojam Total			15	27	38	9	6	95	22			
North Wollo	Guba Lafto	Female	2	9	8	48	-	67	64	10-Nov-17	Conflict	During 2017
North Wollo	Guba Lafto	Male	4	10	3	52	2	71				
North Wollo	Guba Lafto	Female	2	1	-	26	3	32	45	19-Nov-17	Conflict	During 2017
North Wollo	Guba Lafto	Male	-	7	1	25	3	36				
North Wollo	Guba Lafto	Female	6	18	3	57	1	85	48	21-Nov-17	Conflict	During 2017
North Wollo	Guba Lafto	Male	6	22	8	39	3	78				
North Wollo	Guba Lafto	Female	15	21	6	45	1	88	46	27-Nov-17	Conflict	During 2017
North Wollo	Guba Lafto	Male	8	21	7	55	1	92				
North Wollo	Guba Lafto	Female	1	8	4	17	1	31	24	05-Dec-17	Conflict	During 2017
North Wollo	Guba Lafto	Male	-	2	4	23	-	29				
North Wollo	Guba Lafto	Female	8	9	16	30	1	64	35	28-Dec-17	Conflict	During 2017
North Wollo	Guba Lafto	Male	7	19	12	46	2	86				
North Wollo	Guba Lafto	Female	6	19	2	26	1	54	22	08-Feb-18	Conflict	In 2018
North Wollo	Guba Lafto	Male	2	12	8	24	1	47				
North Wollo	Habru	Female	4	18	14	60	2	98	98	30-Oct-17	Conflict	During 2017
North Wollo	Habru	Male	5	14	10	71	2	102				
North Wollo	Kobo	Female	-	-	-	-	-	-	182	30-Aug-18	Conflict	In 2018
North Wollo	Kobo	Male	-	-	-	180	2	182				
North Wollo	Kobo	Female	117	235	94	385	15	846	427	03-Sep-18	Conflict	In 2018
North Wollo	Kobo	Male	129	121	106	425	26	807				
North Wollo Total			322	566	306	1,634	67	2,895	991			
Oromia	Bati	Female	28	28	10	56	5	127	51	22-Apr-17	Conflict	During 2017
Oromia	Bati	Male	23	20	10	48	10	111				
Oromia	Bati	Female	39	38	6	54	6	143	56	12-Dec-17	Conflict	During 2017
Oromia	Bati	Male	25	54	15	54	8	156				
Oromia	Dewa Harewa	Female	16	12	8	25	5	66	24	15-Jan-01	Conflict	Before 2017
Oromia	Dewa Harewa	Male	11	17	7	24	3	62				
Oromia	Dewa Harewa	Female	18	27	9	40	5	99	36	15-Jan-04	Conflict	Before 2017
Oromia	Dewa Harewa	Male	23	20	9	32	11	95				
Oromia	Dewa Harewa	Female	14	22	8	40	6	90	40	01-Jan-09	Conflict	Before 2017
Oromia	Dewa Harewa	Male	18	24	10	36	12	100				
Oromia Total			215	262	92	409	71	1,049	207			
South Gonder	Anda Bet	Female	9	16	8	57	-	90	57	18-Dec-17	Conflict	During 2017
South Gonder	Anda Bet	Male	5	19	9	57	1	91				
South Gonder	Debre Tabor City Administration	Female	8	12	4	43	-	67	65	11-Nov-17	Conflict	During 2017
South Gonder	Debre Tabor City Administration	Male	10	15	1	67	-	93				



International Organization for Migration (IOM)
The UN Migration Agency

ANNEX I : INTERNAL DISPLACEMENTS IN AMHARA REGION AS OF OCTOBER 2018

Zone	Woreda	Sex	Age Groups					Total	HHs	Site Open Date	Cause	Duration
			Infants (0-4 y)	Children (5-14 y)	Youth (15-17 y)	Adults (18-59 y)	Elderly (60 +y)					
South Gondar	Debre Tabor City Administration	Female	15	24	6	58	1	104	73	23-Dec-17	Conflict	During 2017
South Gondar	Debre Tabor City Administration	Male	10	19	8	77	-	114				
South Gondar	Esite	Female	4	5	4	30	-	43	35	20-Mar-13	Conflict	Before 2017
South Gondar	Esite	Male	9	14	7	28	-	58				
South Gondar	Esite	Female	15	31	15	153	-	214	153	10-Apr-13	Conflict	Before 2017
South Gondar	Esite	Male	38	46	8	145	-	237				
South Gondar	Esite	Female	11	34	11	56	-	112	75	10-May-13	Conflict	Before 2017
South Gondar	Esite	Male	26	15	4	56	-	101				
South Gondar	Esite	Female	6	18	6	145	-	175	121	07-Jun-13	Conflict	Before 2017
South Gondar	Esite	Male	30	36	24	121	6	217				
South Gondar Total			196	304	115	1,093	8	1,716	579			
South Wollo	Kalu	Female	20	20	14	61	5	120	69	15-Aug-17	Conflict	During 2017
South Wollo	Kalu	Male	18	20	14	62	7	121				
South Wollo	Kalu	Female	13	18	8	70	5	114	52	07-Sep-18	Conflict	In 2018
South Wollo	Kalu	Male	18	16	10	57	8	109				
South Wollo	Mehal Sayint	Female	5	9	3	28	2	47	28	15-Aug-16	Conflict	Before 2017
South Wollo	Mehal Sayint	Male	8	10	5	19	2	44				
South Wollo	Mehal Sayint	Female	10	12	3	32	3	60	34	01-Sep-16	Conflict	Before 2017
South Wollo	Mehal Sayint	Male	14	12	7	26	5	64				
South Wollo Total			106	117	64	355	37	679	183			
Wag Himra	Dehana	Female	10	12	9	34	7	72	25	13-Jul-17	Landslide	During 2017
Wag Himra	Dehana	Male	14	15	11	37	3	80				
Wag Himra Total			24	27	20	71	10	152	25			
West Gojam	Bahirdar Zuria	Female	161	81	-	269	-	511	269	17-Apr-18	Conflict	In 2018
West Gojam	Bahirdar Zuria	Male	81	54	-	148	-	283				
West Gojam	Bahirdar Zuria	Female	84	53	-	210	-	347	210	21-Apr-18	Conflict	In 2018
West Gojam	Bahirdar Zuria	Male	63	63	21	105	11	263				
West Gojam	Bahirdar Zuria	Female	30	30	152	455	-	667	606	28-Jul-18	Conflict	In 2018
West Gojam	Bahirdar Zuria	Male	121	121	-	333	-	575				
West Gojam	Dega Damot	Female	3	22	25	-	1	51	27	08-Nov-17	Conflict	During 2017
West Gojam	Dega Damot	Male	5	6	7	10	4	32				
West Gojam	Dega Damot	Female	3	3	-	26	-	32	27	24-Nov-17	Conflict	During 2017
West Gojam	Dega Damot	Male	8	-	-	23	-	31				
West Gojam	Dega Damot	Female	7	24	28	-	-	59	26	03-Dec-17	Conflict	During 2017
West Gojam	Dega Damot	Male	7	5	14	13	4	43				
West Gojam	Dega Damot	Female	10	38	30	32	1	111	58	24-Dec-17	Conflict	During 2017
West Gojam	Dega Damot	Male	12	19	11	37	2	81				
West Gojam	Sekela	Female	49	53	10	107	5	224	97	28-Sep-09	Conflict	Before 2017
West Gojam	Sekela	Male	49	78	10	102	-	239				
West Gojam	Sekela	Female	9	12	9	35	2	67	35	15-Apr-18	Conflict	In 2018
West Gojam	Sekela	Male	16	19	7	33	-	75				
West Gojam Total			718	681	324	1,938	30	3,691	1,355			
West Gondar	Metema	Female	8	13	5	21	1	48	21	16-Dec-15	Conflict	Before 2017
West Gondar	Metema	Male	4	14	2	28	-	48				



International Organization for Migration (IOM)
The UN Migration Agency

ANNEX I : INTERNAL DISPLACEMENTS IN AMHARA REGION AS OF OCTOBER 2018

Zone	Woreda	Sex	Age Groups					Total	HHs	Site Open Date	Cause	Duration
			Infants (0-4 y)	Children (5-14 y)	Youth (15-17 y)	Adults (18-59 y)	Elderly (60 +y)					
West Gonder	Metema	Female	15	36	61	107	5	224	102	17-Dec-15	Conflict	Before 2017
West Gonder	Metema	Male	36	41	15	97	15	204				
West Gonder Total			63	104	83	253	21	524	123			
Grand Total			1,795	2,307	1,162	6,284	273	11,821	3,732			

Disclaimer: Age and gender disaggregation for the site is extrapolated using a demographic calculator tool based on the age range and sex of the household members of 20 randomly selected households from the site.

Displacement Tracking Matrix (DTM) conducted in collaboration with Danish Refugee Council (DRC)



Humanitarian Aid
and Civil Protection



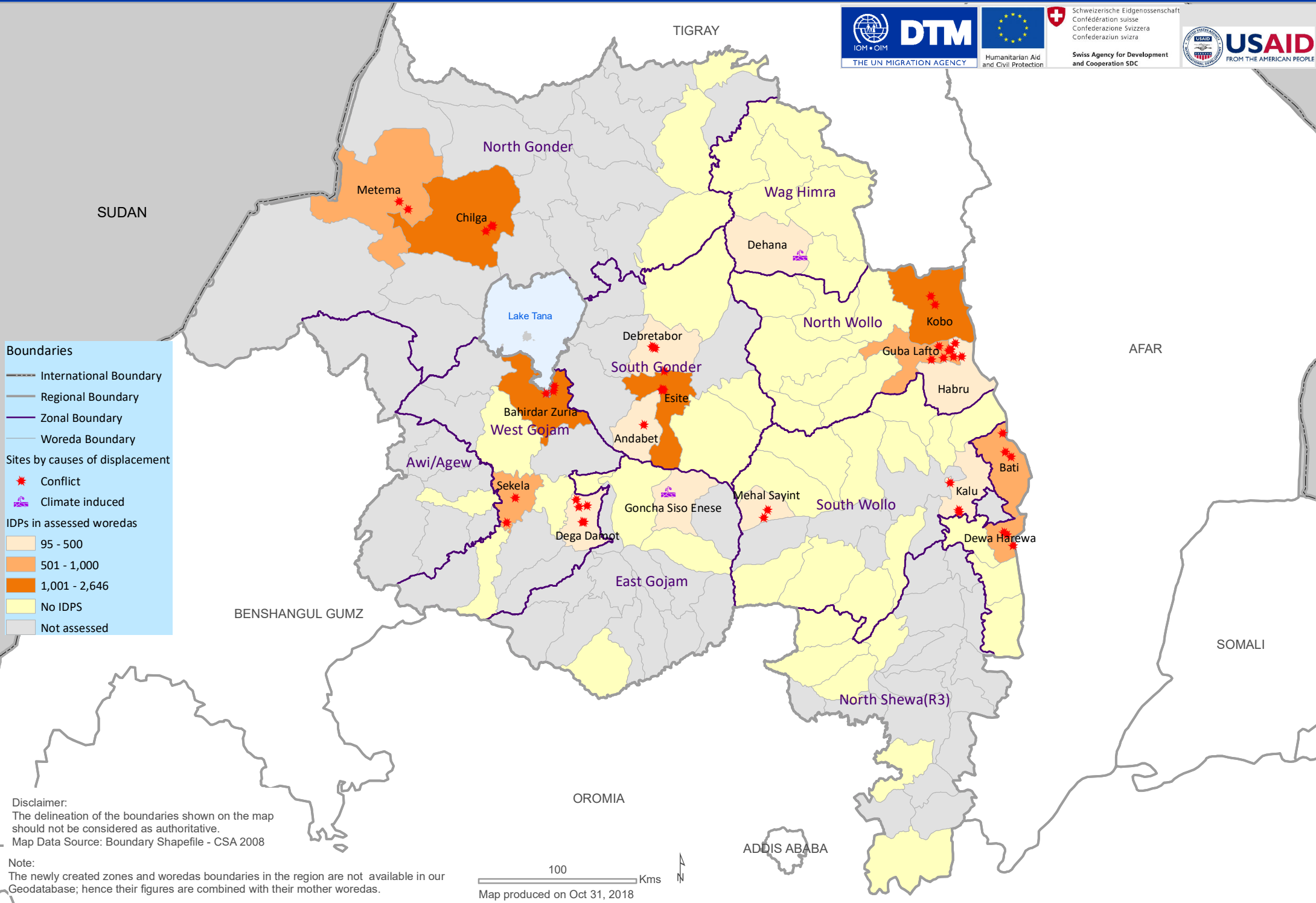
Schweizerische Eidgenossenschaft
Confédération suisse
Confederazione Svizzera
Confederaziun svizra
Swiss Agency for Development
and Cooperation SDC



USAID
FROM THE AMERICAN PEOPLE

DTM made possible thanks to the European Civil Protection and Humanitarian Aid Operations (ECHO), the Ethiopian Humanitarian Fund (EHF), the Office of United States Foreign Disaster Assistance (OFDA) and the Swiss agency for Development and Cooperation (SDC).

The opinions expressed in this report are those of the authors and do not necessarily reflect the views of the Office of United States Foreign Disaster Assistance.



Boundaries

- International Boundary
- Regional Boundary
- Zonal Boundary
- Woreda Boundary

Sites by causes of displacement

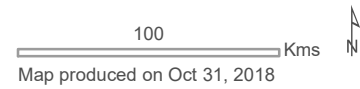
- Conflict
- Climate induced

IDPs in assessed woredas

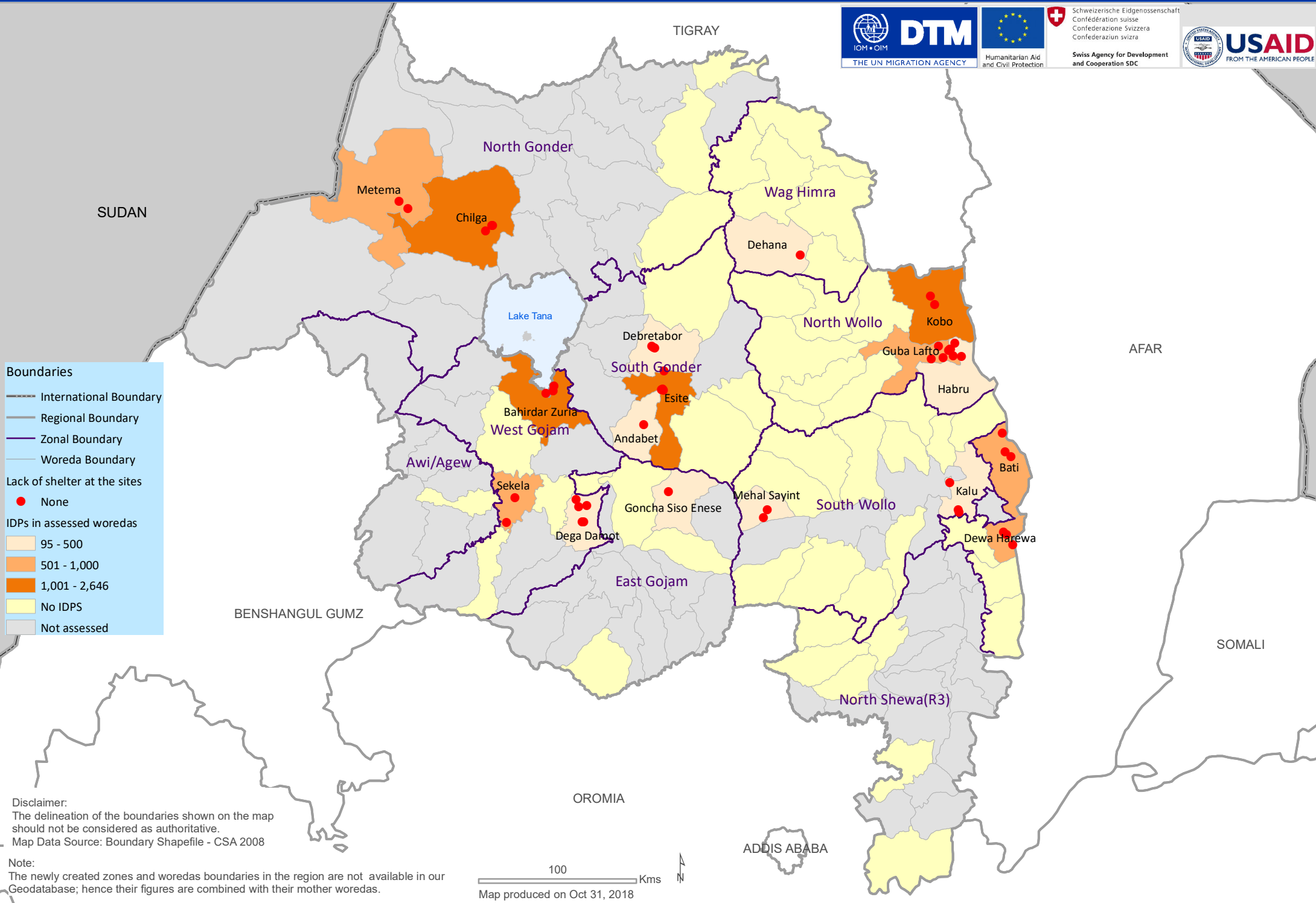
- 95 - 500
- 501 - 1,000
- 1,001 - 2,646
- No IDPS
- Not assessed

Disclaimer:
 The delineation of the boundaries shown on the map should not be considered as authoritative.
 Map Data Source: Boundary Shapefile - CSA 2008

Note:
 The newly created zones and woredas boundaries in the region are not available in our Geodatabase; hence their figures are combined with their mother woredas.



Annex III - Amhara region households reporting lack of shelter at the sites and IDPs in assessed woredas DTM round thirteen (01/09 - 30/09, 2018)



Boundaries

- International Boundary
- Regional Boundary
- Zonal Boundary
- Woreda Boundary

Lack of shelter at the sites

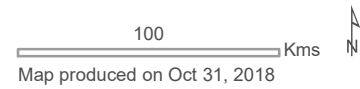
- None

IDPs in assessed woredas

- 95 - 500
- 501 - 1,000
- 1,001 - 2,646
- No IDPS
- Not assessed

Disclaimer:
The delineation of the boundaries shown on the map should not be considered as authoritative.
Map Data Source: Boundary Shapefile - CSA 2008

Note:
The newly created zones and woredas boundaries in the region are not available in our Geodatabase; hence their figures are combined with their mother woredas.



Annex IV - Amhara region households reporting access to ES kits and IDPs in assessed woredas DTM round thirteen (01/09 - 30/09, 2018)



Boundaries

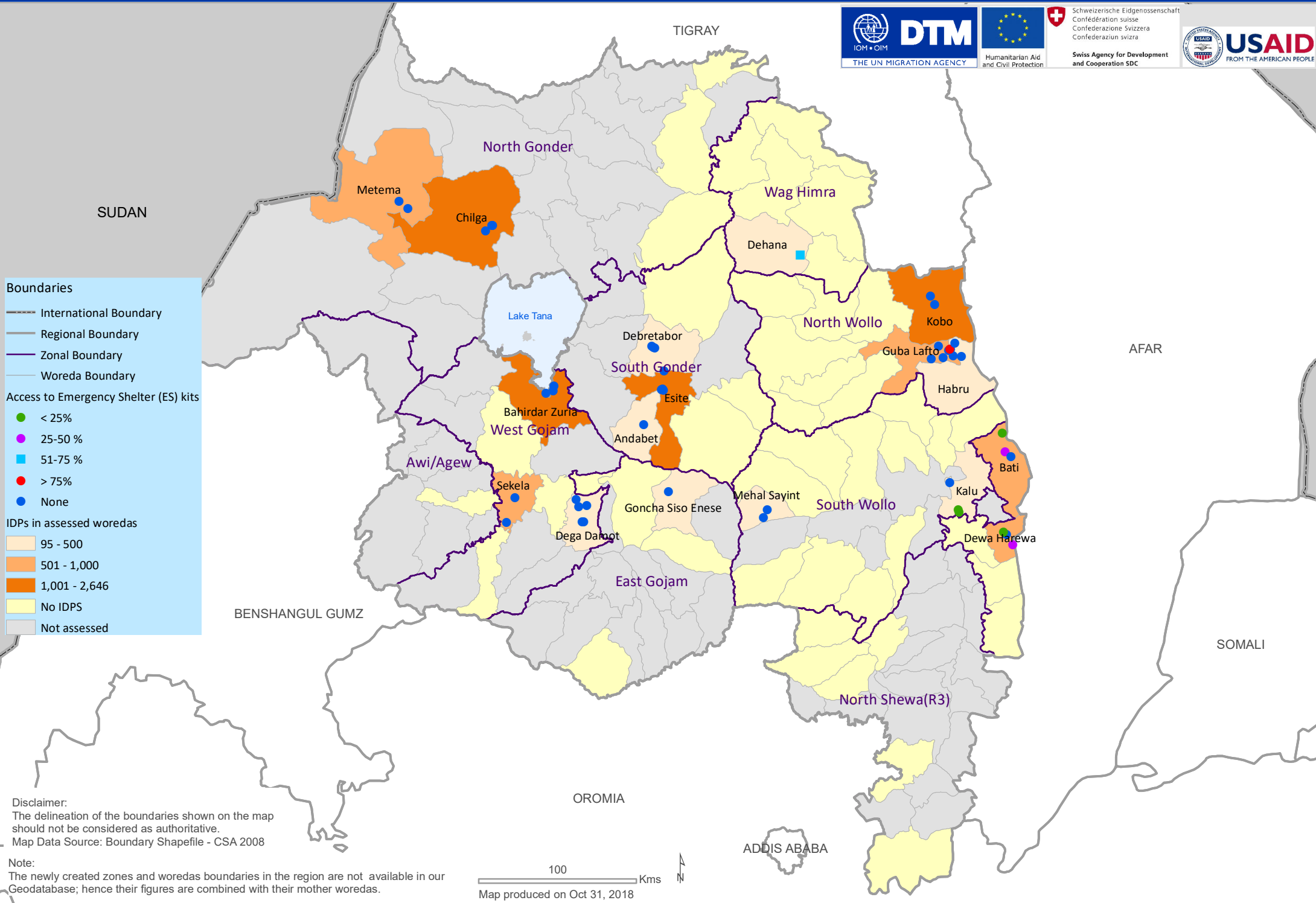
- International Boundary
- Regional Boundary
- Zonal Boundary
- Woreda Boundary

Access to Emergency Shelter (ES) kits

- < 25% (Green dot)
- 25-50% (Purple dot)
- 51-75% (Cyan square)
- > 75% (Red dot)
- None (Blue dot)

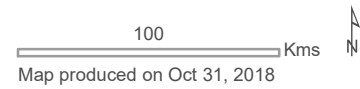
IDPs in assessed woredas

- 95 - 500 (Light orange)
- 501 - 1,000 (Orange)
- 1,001 - 2,646 (Dark orange)
- No IDPS (Yellow)
- Not assessed (Grey)

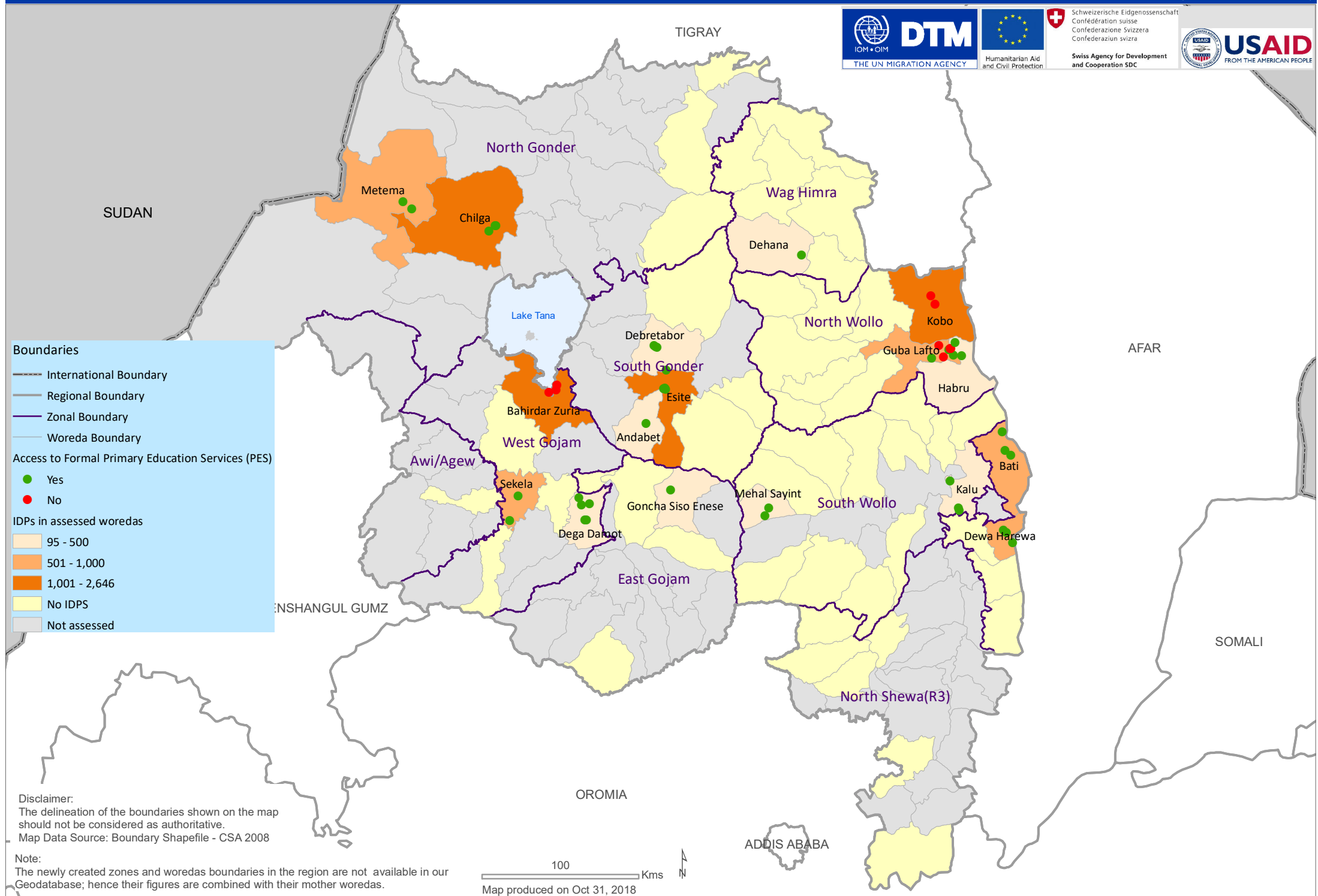


Disclaimer:
The delineation of the boundaries shown on the map should not be considered as authoritative.
Map Data Source: Boundary Shapefile - CSA 2008

Note:
The newly created zones and woredas boundaries in the region are not available in our Geodatabase; hence their figures are combined with their mother woredas.



Annex IX - Amhara region sites reporting access to Formal PES and IDPs in assessed woredas DTM round thirteen (01/09 - 30/09, 2018)



Annex V - Amhara region sites reporting access to water and IDPs in assessed woredas

DTM round thirteen (01/09 - 30/09, 2018)



Boundaries

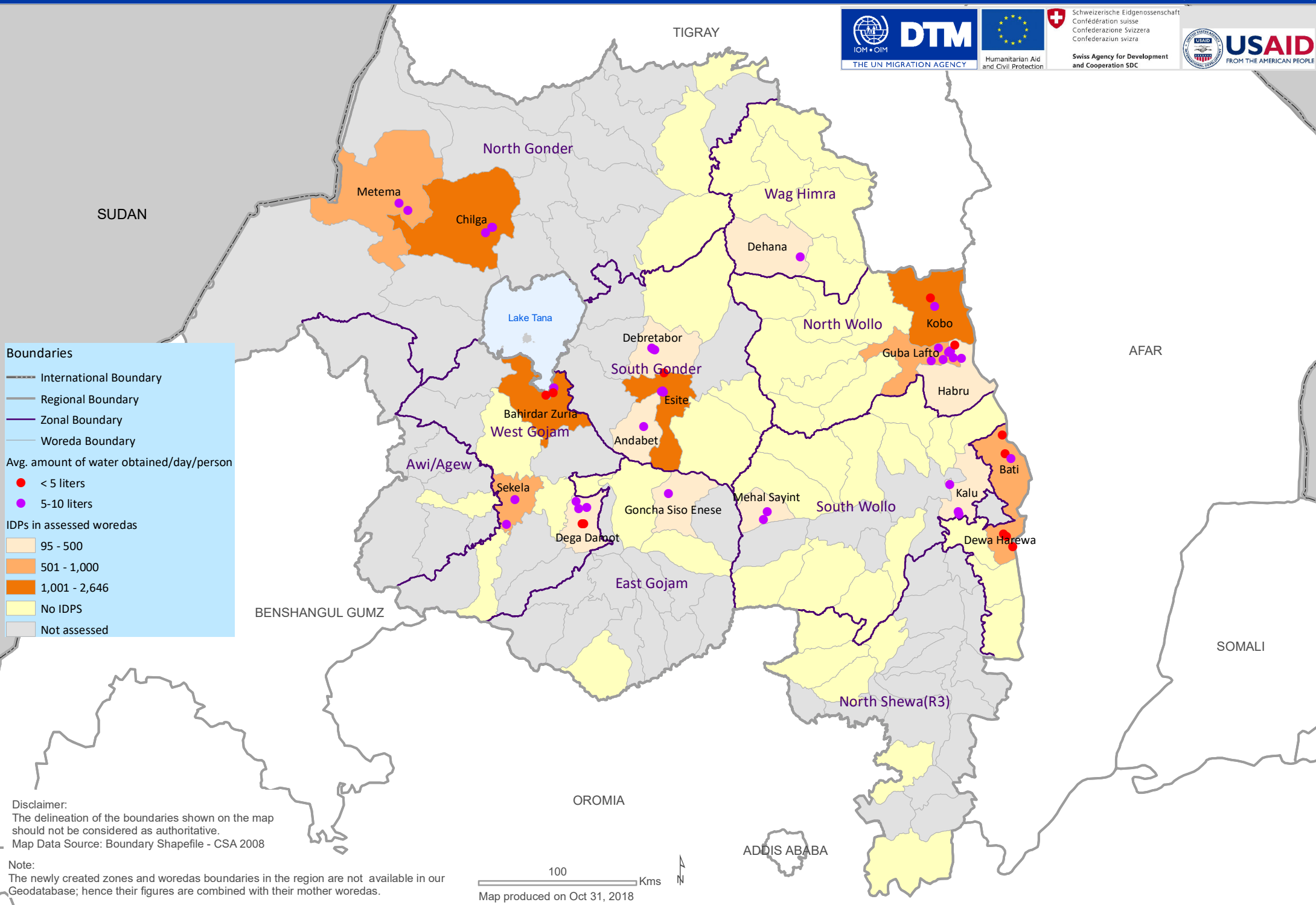
- International Boundary
- Regional Boundary
- Zonal Boundary
- Woreda Boundary

Avg. amount of water obtained/day/person

- < 5 liters
- 5-10 liters

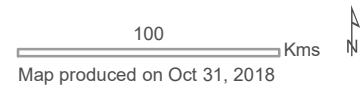
IDPs in assessed woredas

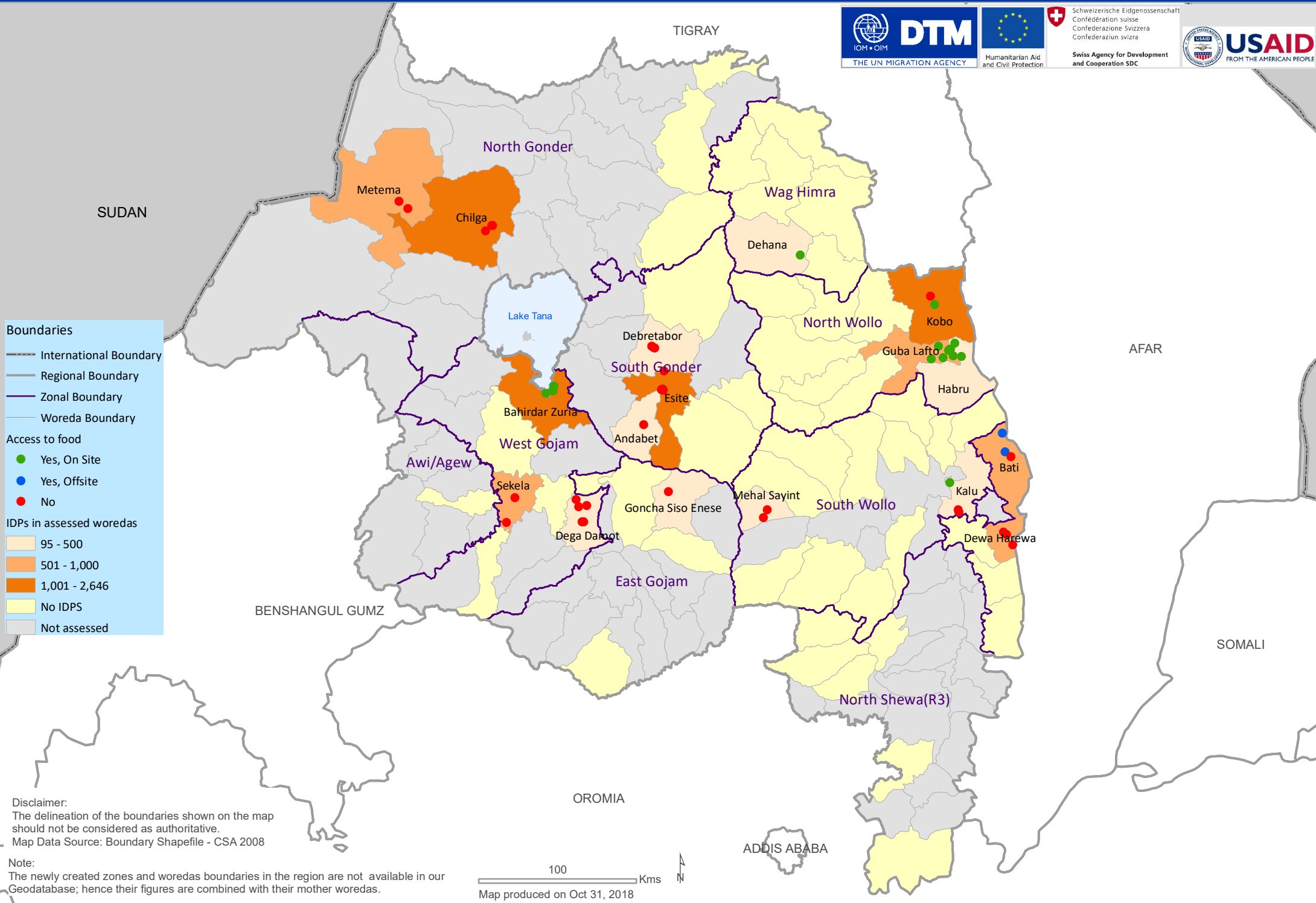
- 95 - 500
- 501 - 1,000
- 1,001 - 2,646
- No IDPS
- Not assessed



Disclaimer:
The delineation of the boundaries shown on the map should not be considered as authoritative.
Map Data Source: Boundary Shapefile - CSA 2008

Note:
The newly created zones and woredas boundaries in the region are not available in our Geodatabase; hence their figures are combined with their mother woredas.





Boundaries

- International Boundary
- Regional Boundary
- Zonal Boundary
- Woreda Boundary

Access to food

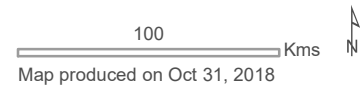
- Yes, On Site
- Yes, Offsite
- No

IDPs in assessed woredas

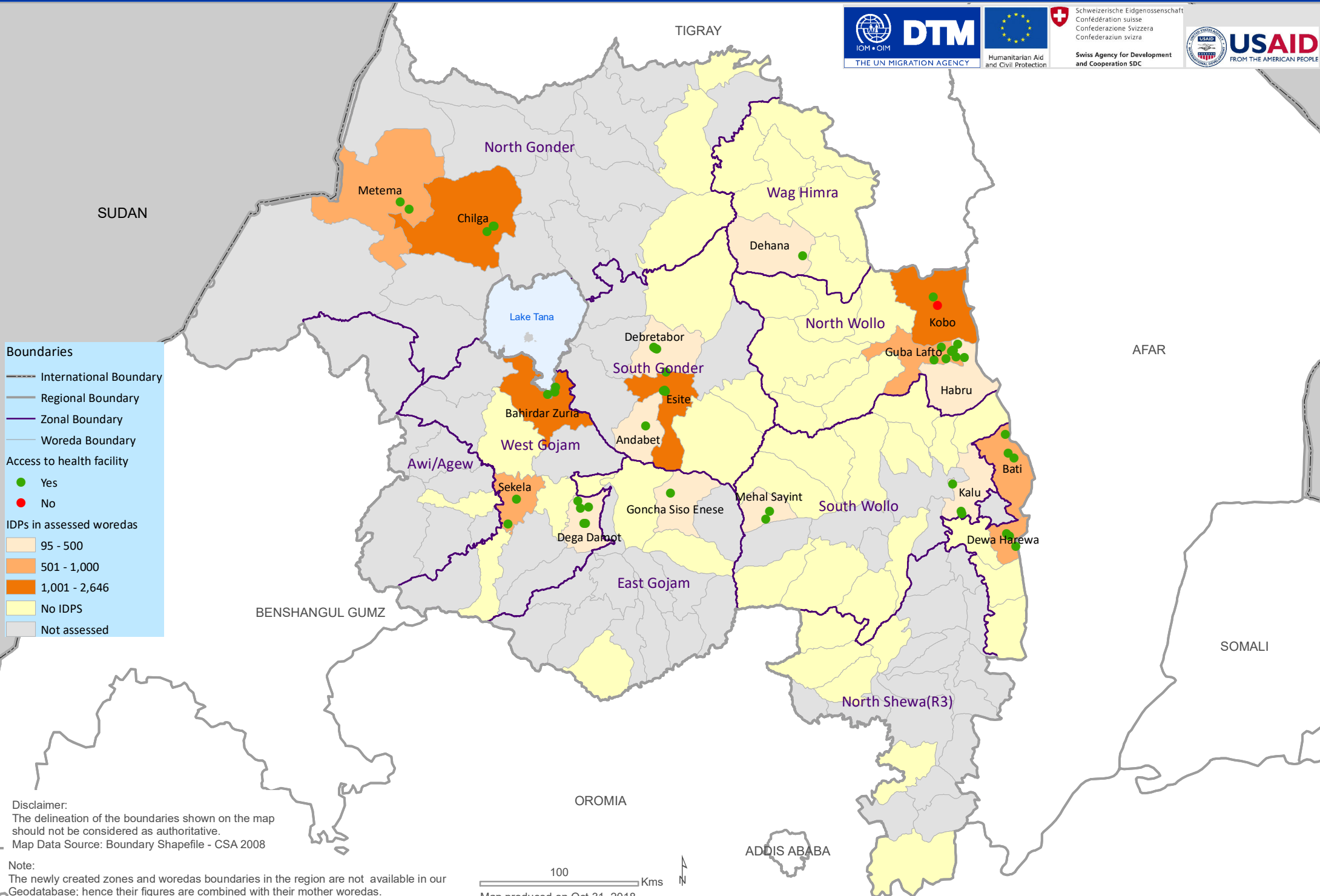
- 95 - 500
- 501 - 1,000
- 1,001 - 2,646
- No IDPS
- Not assessed

Disclaimer:
The delineation of the boundaries shown on the map should not be considered as authoritative.
Map Data Source: Boundary Shapefile - CSA 2008

Note:
The newly created zones and woredas boundaries in the region are not available in our Geodatabase; hence their figures are combined with their mother woredas.



Annex VII - Amhara region sites reporting access to health facility and IDPs in assessed woredas DTM round thirteen (01/09 - 30/09, 2018)



Boundaries

- International Boundary
- Regional Boundary
- Zonal Boundary
- Woreda Boundary

Access to health facility

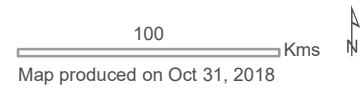
- Yes
- No

IDPs in assessed woredas

- 95 - 500
- 501 - 1,000
- 1,001 - 2,646
- No IDPS
- Not assessed

Disclaimer:
The delineation of the boundaries shown on the map should not be considered as authoritative.
Map Data Source: Boundary Shapefile - CSA 2008

Note:
The newly created zones and woredas boundaries in the region are not available in our Geodatabase; hence their figures are combined with their mother woredas.





Boundaries

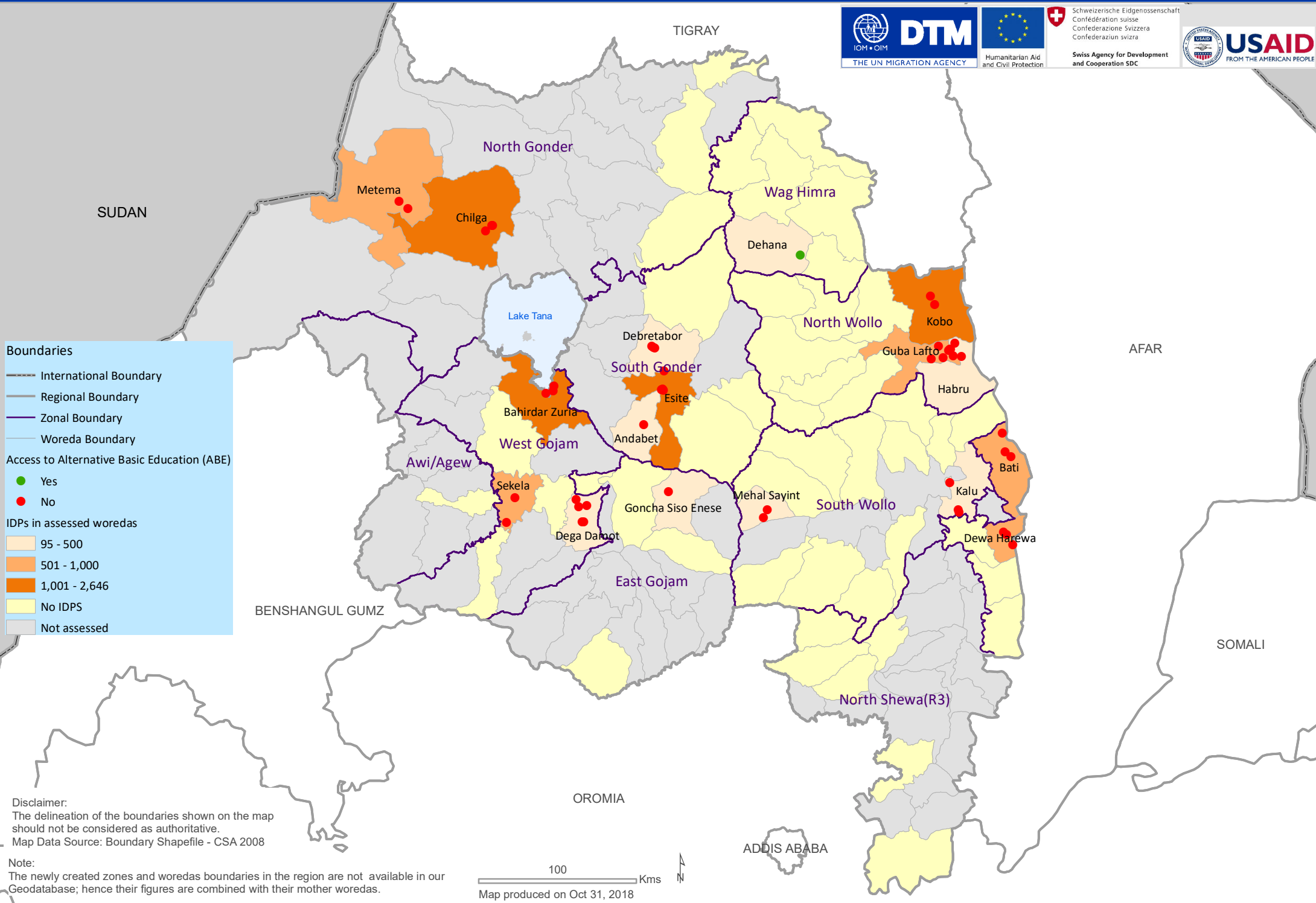
- International Boundary
- Regional Boundary
- Zonal Boundary
- Woreda Boundary

Access to Alternative Basic Education (ABE)

- Yes (Green dot)
- No (Red dot)

IDPs in assessed woredas

- 95 - 500 (Light orange)
- 501 - 1,000 (Medium orange)
- 1,001 - 2,646 (Dark orange)
- No IDPS (Yellow)
- Not assessed (Grey)



Disclaimer:
The delineation of the boundaries shown on the map should not be considered as authoritative.
Map Data Source: Boundary Shapefile - CSA 2008

Note:
The newly created zones and woredas boundaries in the region are not available in our Geodatabase; hence their figures are combined with their mother woredas.

