

FACTSHEET - SITE REGISTRATION

DATA COLLECTION: MARCH 2024

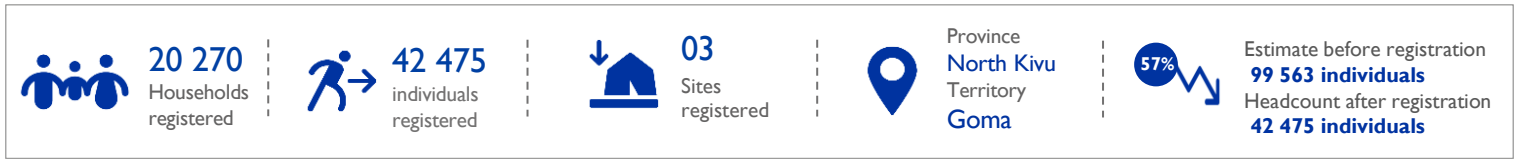
March 2024

CONTEXT

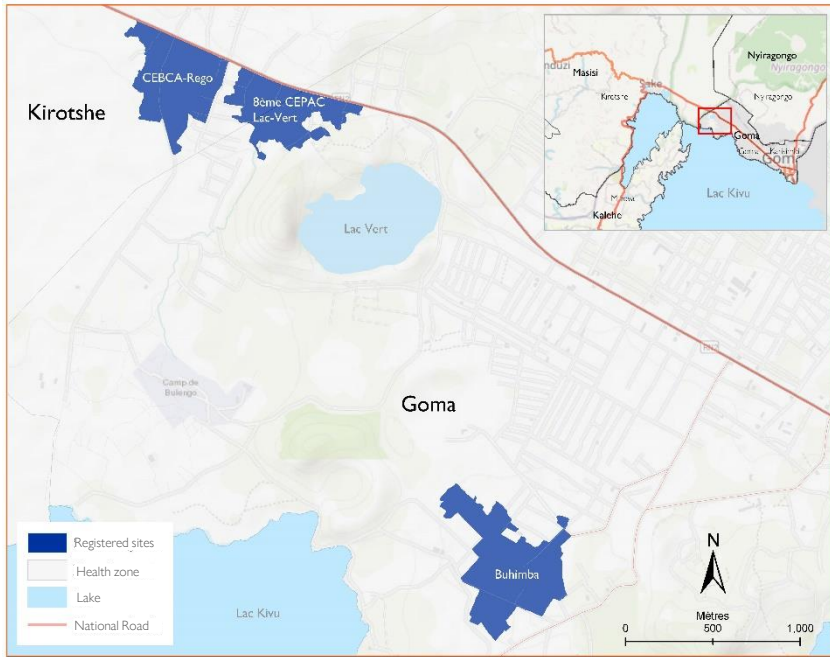
Following the escalation of hostilities between the armed group Mouvement du 23 Mars (M23) and the Congolese Armed Forces (FARDC) and their allies at the end of January 2024, a significant displacement crisis has developed in the eastern region of the Democratic Republic of Congo (DRC), particularly in the North Kivu province. Many individuals and families have been uprooted from their communities, seeking safety and shelter in various areas due to deteriorating security conditions. The intensification of the conflict has forced households to abandon their residences, leading to massive displacements from their places of origin to host communities, established sites, collective centers, and newly created sites. In response to these population movements, especially towards existing or newly established sites, the Displacement Tracking Matrix (DTM) has conducted registrations to keep the data up to date, collect information on new sites, regularly inform stakeholders about the evolution of movements, and provide data for potential humanitarian assistance.

This document presents key elements drawn from the consolidated results of the registration operations in Nord-Kivu conducted by IOM between **March 7 and March 16, 2024**, in the displacement sites of **8th CEPAC Lac Vert (Goma)**, **BUHIMBA (Goma)**, and **CBCA-REGO (Goma)**. Registration teams visited these displacement sites to verify, tent by tent, the presence of displaced households. In each habited tent, the enumerators recorded the present households. This fieldwork was carried out in collaboration with the **Commission Nationale pour les Réfugiés (CNR)** in Nord-Kivu.

HIGHLIGHTS



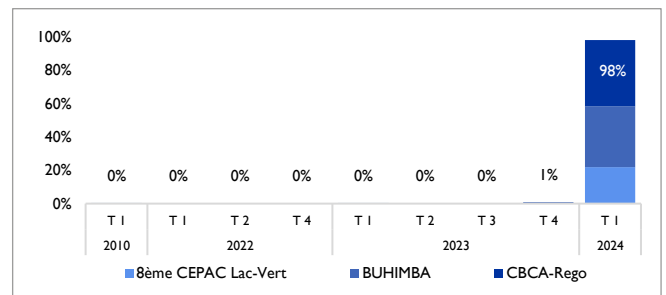
SITE MAPPING



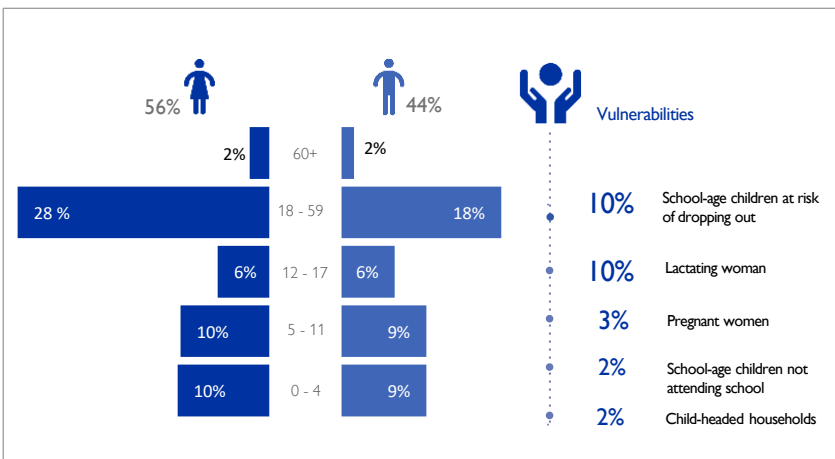
STATISTICS

Sites	Households	Individuals	Female	Male
8ème CEPAC Lac-Vert	4,125	9,502	5,379	4,123
BUHIMBA	9,540	15,760	9,016	6,744
CBCA-Rego	6,605	17,213	9,440	7,773
Total	20,270	42,475	23,835	18,640

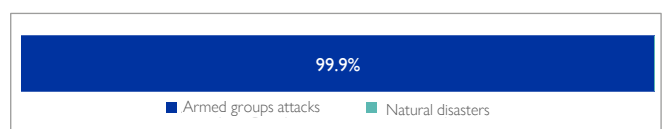
ARRIVAL PERIOD AT THE SITES



DEMOGRAPHY & VULNERABILITIES



REASON FOR DISPLACEMENT



AREA OF ORIGIN

