

Mogadishu hosts the largest estimated protracted internally displaced population in Somalia, mainly living in informal IDP sites across the city. According to the [Joint IDP Profiling Service \(JIPS\)](#) 2016 profiling activity, findings show that during the last three years, the majority of IDPs have shifted from more central districts in Mogadishu to districts in the periphery of the city, which stands in contrast to previous studies carried out in Mogadishu. Moreover, people continue to move into the city from other parts of the country, while others are forced to move from within the city to its outskirts. DTM's October 2017 data collection focusing on the greater Mogadishu area (covering Daynile, Dharkenley, Wadajir, Hodan, Kahda, Xamar Jabjab, Waaberi identified a total of 545,000 individuals in over 840 IDP sites.

545,000
Number of IDPs
(rounded estimates)

840+
IDP sites

19 Data collection was conducted between 18th August and 18th September 2017 through key informant interviews

AGE DISAGGREGATION OF IDPS

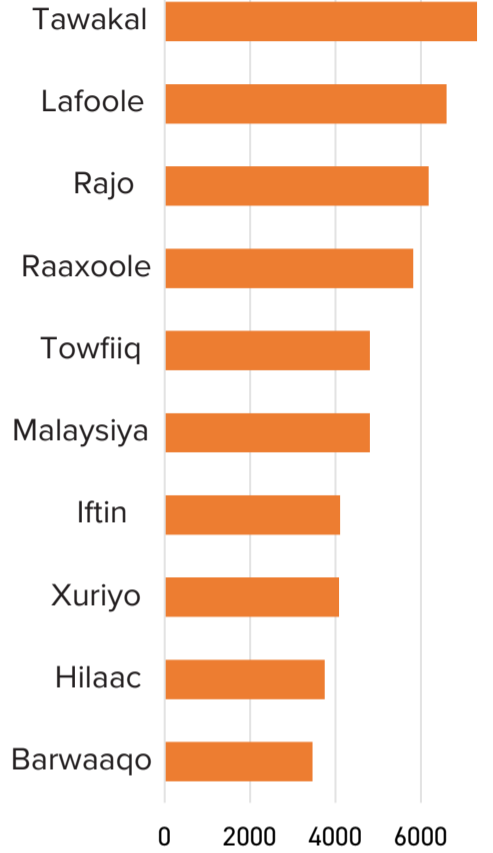
Children (0-5 years)	133,654
Children (6 - 18 Years)	94,158
Adults (18 - 59 Years)	258,627
Elders (60+ years)	46,867

PRIORITY NEEDS*

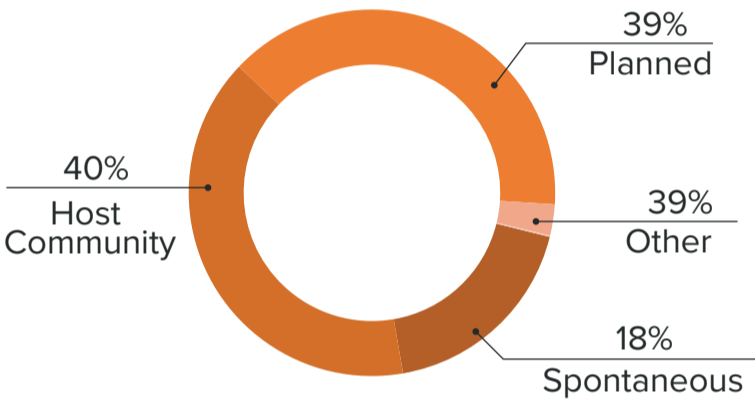
Food	26%
Shelter NFIs	21%
WASH	38%
Medical services	15%

* % sites expressing this need

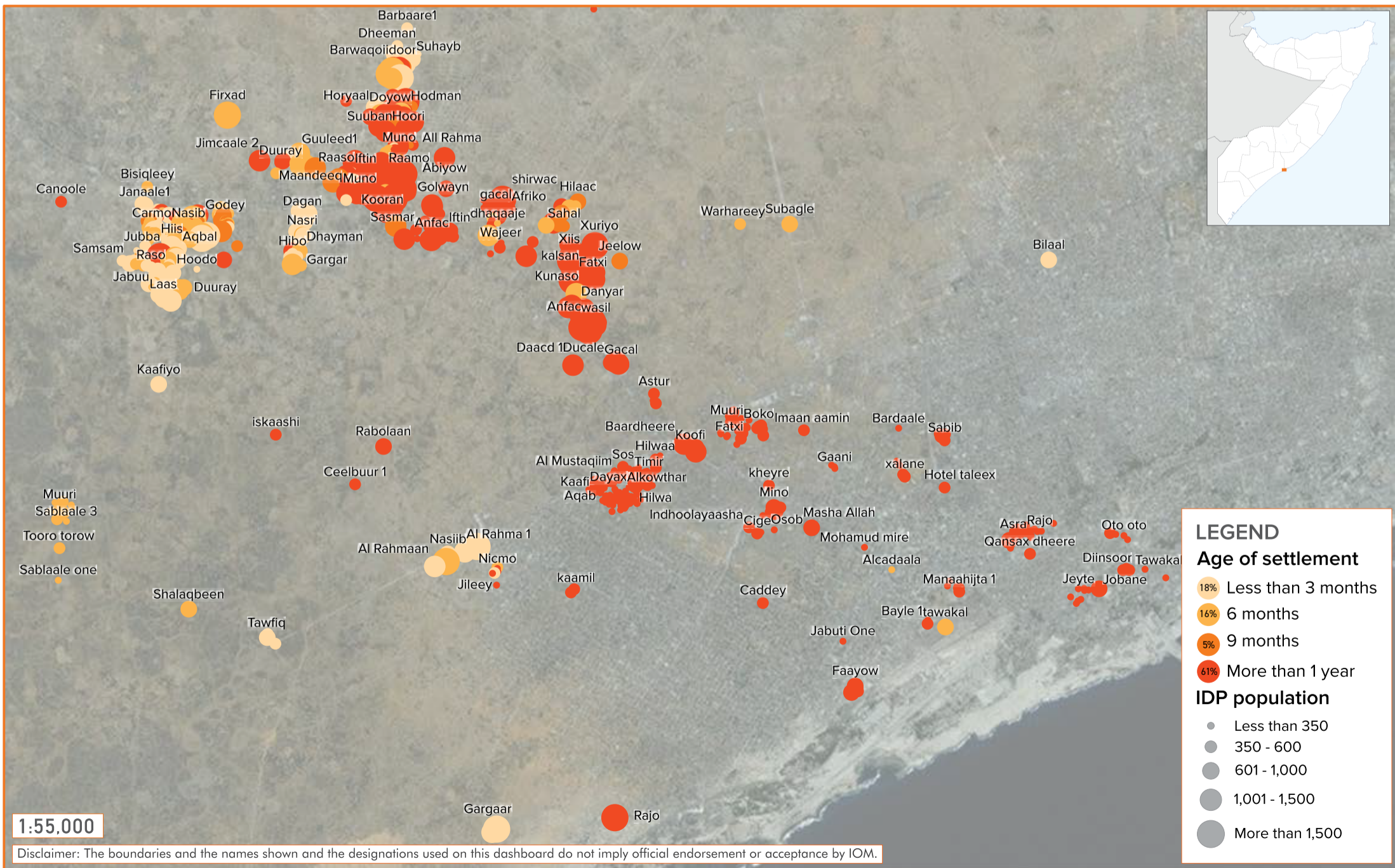
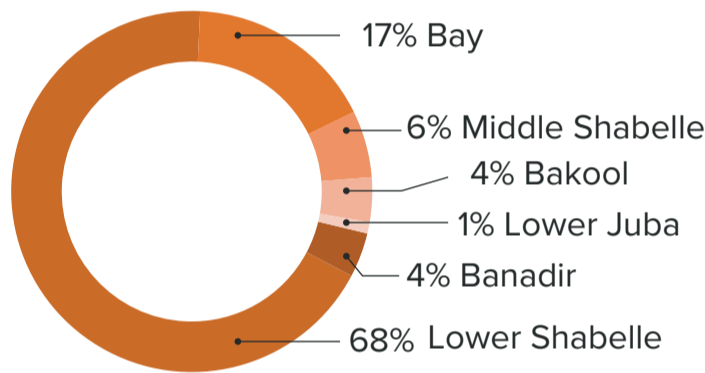
TOP 10 MOST POPULATED SITES



IDP SETTLEMENT BY TYPE



ORIGIN OF IDPS BY REGION



FOR MORE INFORMATION

iomsomaliadtm@iom.int
<http://www.globaldtm.info/somalia>
 Data-set is available [here](#)

