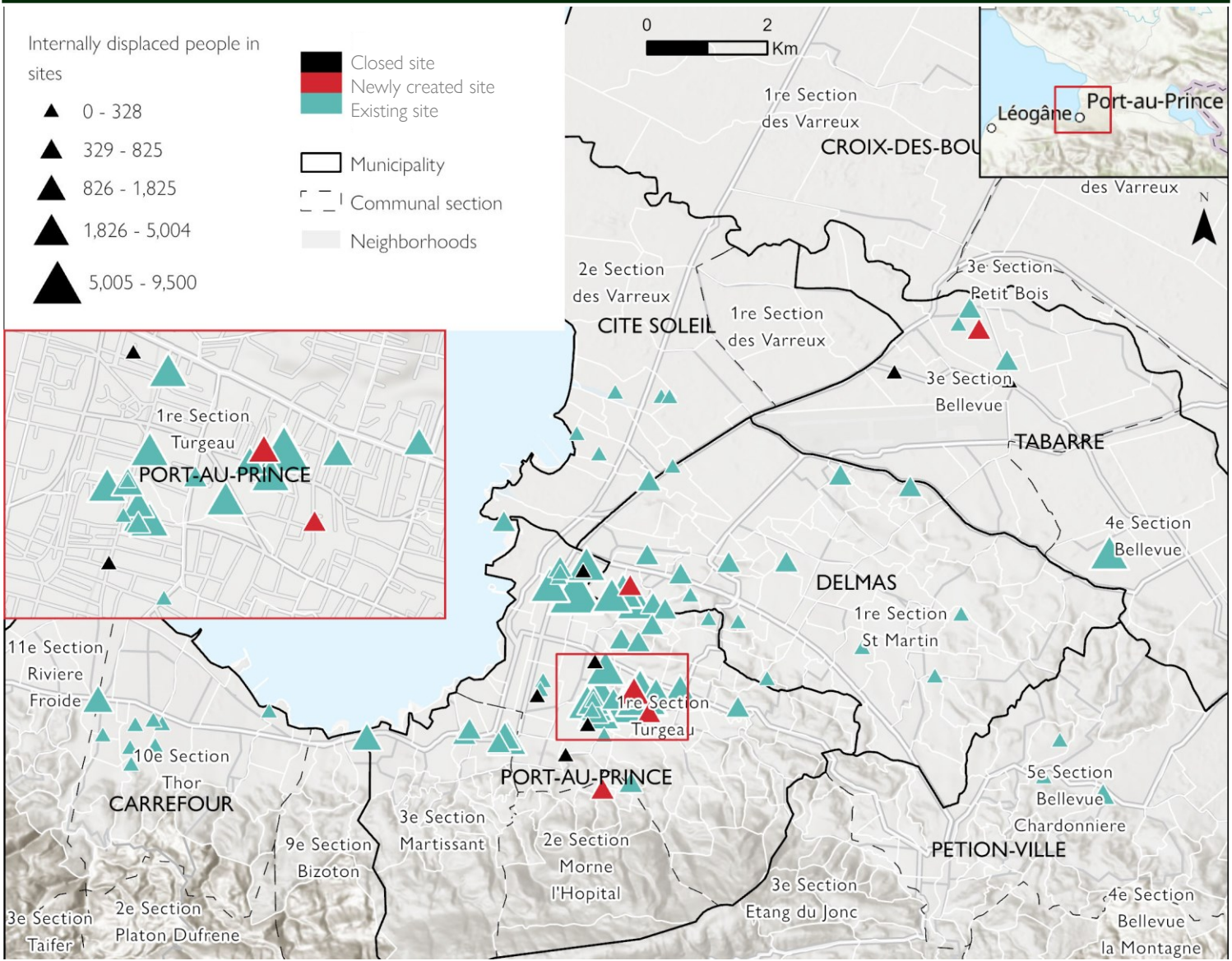
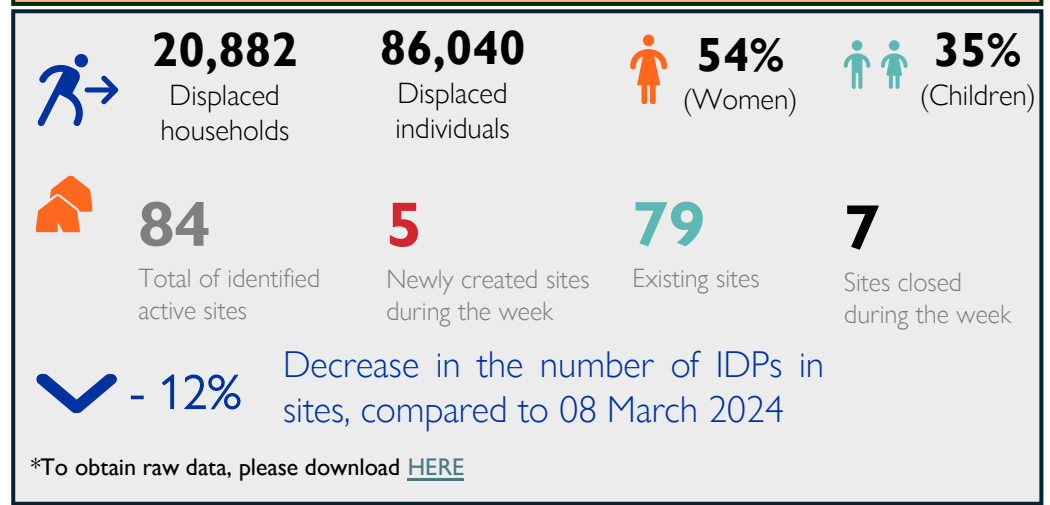


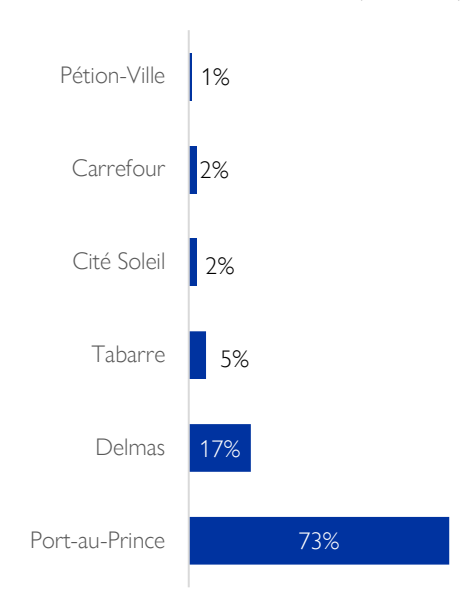
Map 1: Displacement situation in sites of the Metropolitan Area of Port-au-Prince (MAPAP)



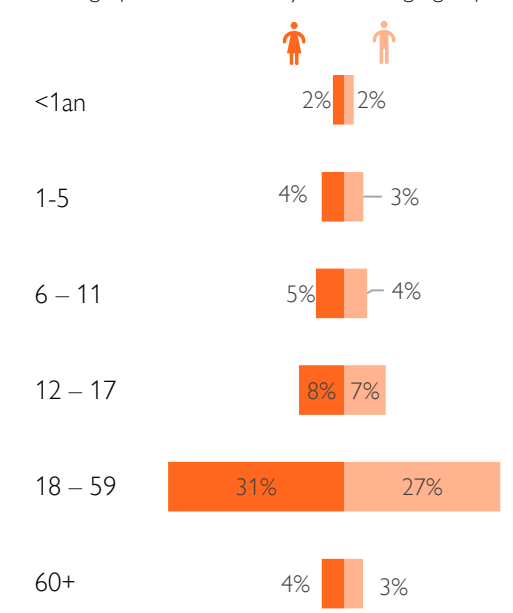
Key figures on IDPs in sites of MAPAP



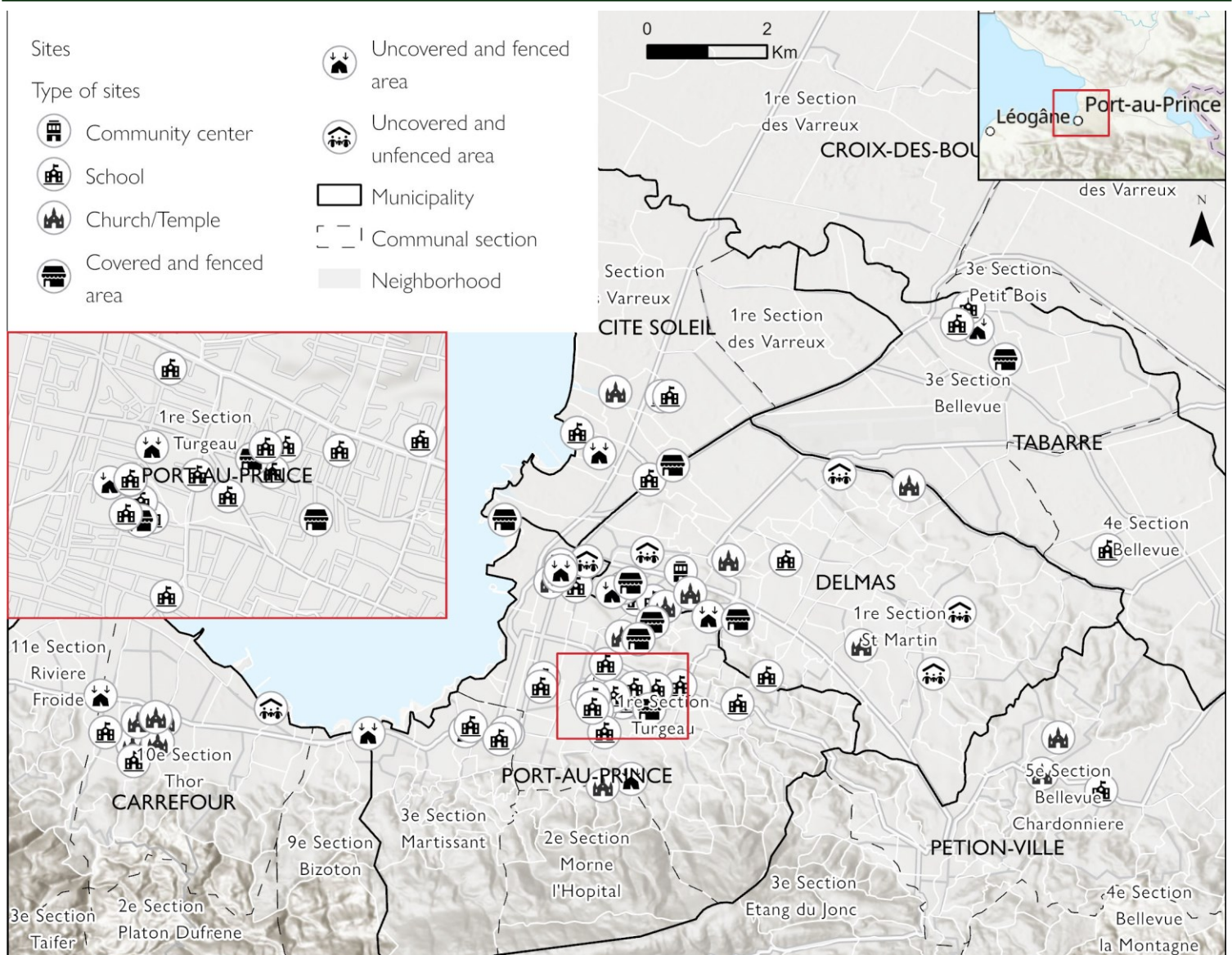
Host municipalities of IDPs in sites (% of IDPs)



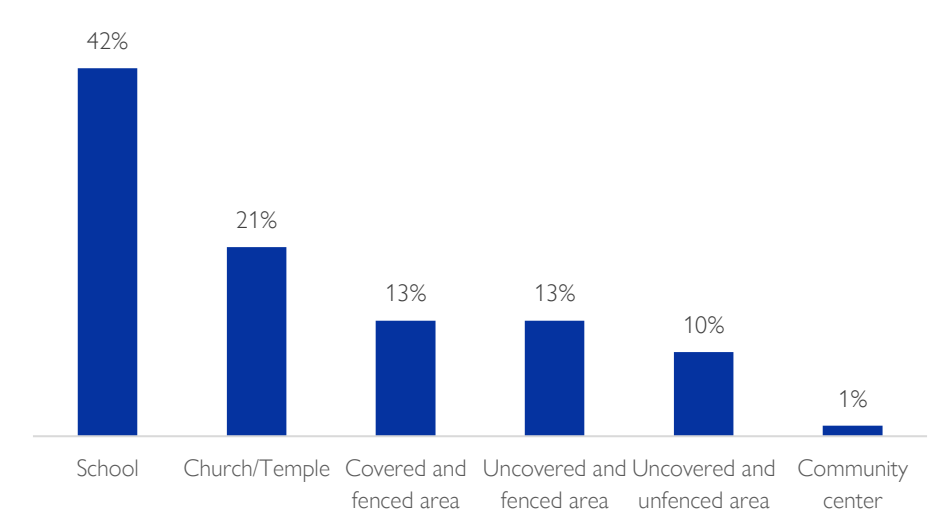
Demographic distribution by sex and age groups



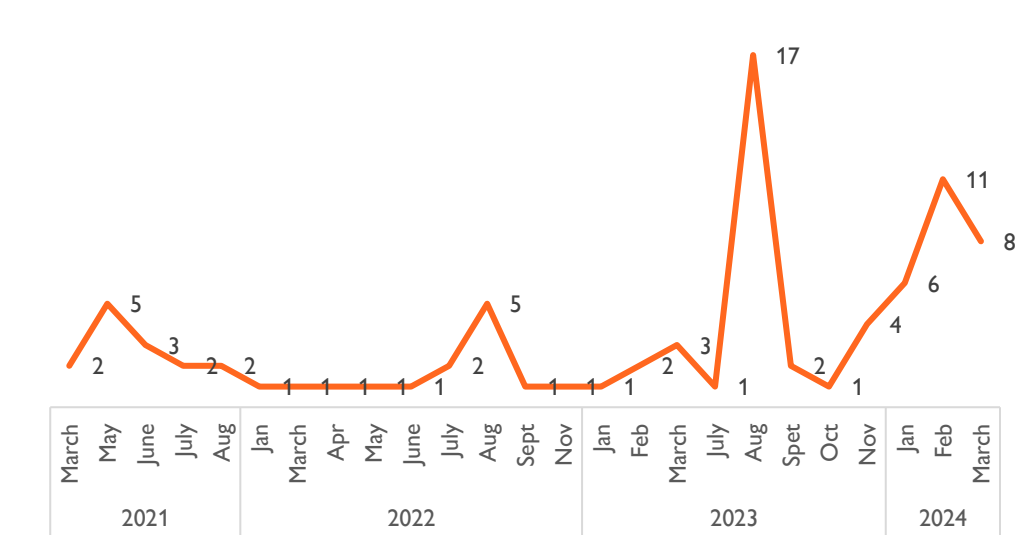
Map 2: Types of IDPs' sites in the Metropolitan Area of Port-au-Prince



Types of sites (% of sites)



Period of creation of the current 84 active sites



Top 5 sites (# of individuals)

Municipality	Neighborhood	Site name	# of IDPs on site
Port-au-Prince	Delmas 2 - Saint-Martin - Tokyo	Institut Monfort	9,500
Port-au-Prince	Bois Verna	Nouveau Local Lycée Marie Jeanne	6,250
Port-au-Prince	Bas Peu de Chose	Lycée des Jeunes filles	5,004
Port-au-Prince	Bois Verna	Lycée Antenor Firmin	3,471
Port-au-Prince	Bas Peu de Chose	Lycée Marie Jeanne	3,173

Closed sites: 1. École Nationale Paraguay, 2. École National Dagueuseau Lespinasse, 3. Ecole st martin ou college teligerne, 4. Place clercine, 5. Radio Mélodie, 6. Eglise de Dieu de Cazeau, 7. École Méthodiste d'Haiti

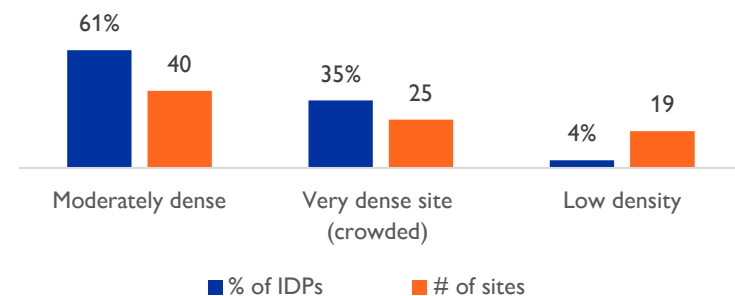
Top 5 sites with a significant increase in the number of IDPs

Municipality	Neighborhood	Site name	# of IDPs on site	Variation compared to last week
Carrefour	Bas Thorland	Nan Tchavez	294	+268%
Carrefour	Do Karyann	College Louis joseph janvier	125	+150%
Port-au-Prince	Cite de l'Eternel	Maché poisson lokal A J M	825	+146%
Port-au-Prince	Bolosse	JFA:Jardin Fleurie d'Angie	650	+126%
Port-au-Prince	Bois Verna	College Isidor Jean Louis	467	+122%

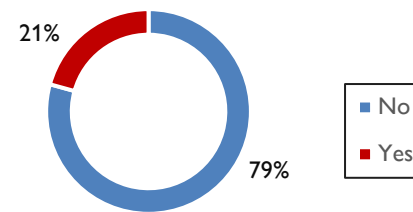
Top 5 sites with a significant decrease in the number of IDPs

Municipality	Neighborhood	Site name	# of IDPs on site	Variation compared to last week
Port-au-Prince	Morne-à-Tuf	Ecole nationale Dumerlin	125	-97%
Tabarre	Croix-des-Missions	Ecole nationale coeur unis	122	-90%
Port-au-Prince	Morne-à-Tuf	Lycée Toussaint Louverture	140	-76%
Carrefour	Waney	Eglise de Dieu la sainteté de waney 97	53	-73%
Pétion-Ville	Kay Colette	Premiere Eglise indépendante de frères	37	-70%

Density in the sites (Direct observation of DTM teams)



Percentage of IDPs at risk of eviction in sites



29 sites threatened with eviction

	Priority needs in sites	% of sites
	Food	93%
	Water	55%
	Health	49%
	Shelter	33%
	Livelihood	31%
	Hygiene and Sanitation	20%
	Education	11%
	NFI	5%
	Protection	2%