

6,573 Individuals Affected
 335 Damaged Shelters
 5 Affected Locations
 52 Casualties
 Movement Trigger:
Attack

Event Overview

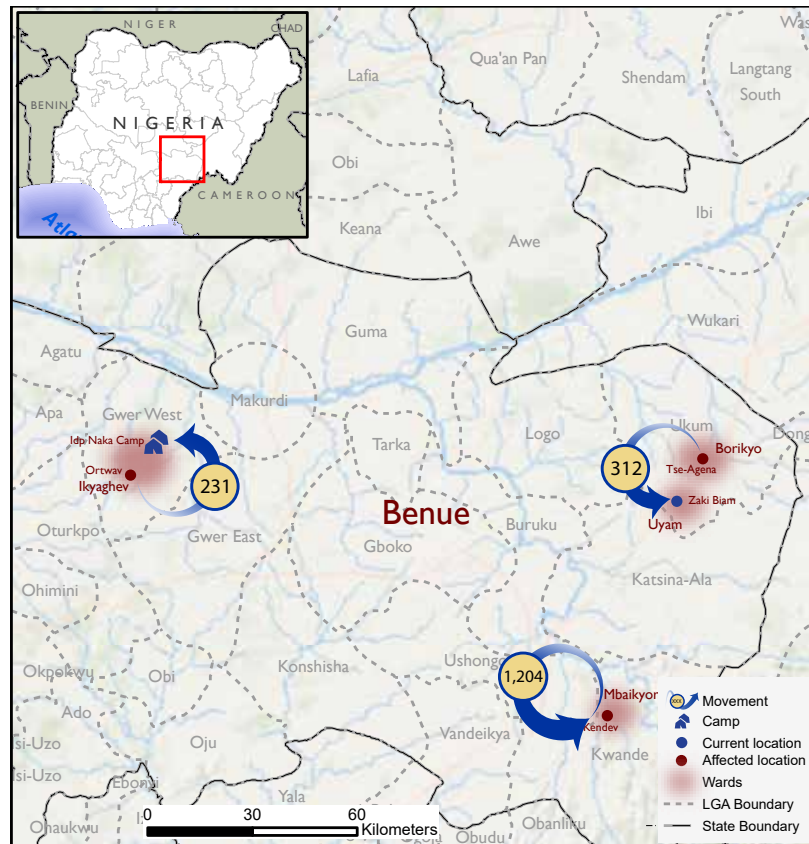
On 18 February 2024, armed bandits attacked the communities of Doka in Idon ward of Kajuru LGA and Ungwan Fatuka in Gayam ward of Birnin Gwari LGA of Kaduna State. Forty-five shelters and properties of multiple households were damaged or destroyed in the communities as a result of the attacks. There were reports of 11 injuries and 11 fatalities. The attacks affected 4,826 individuals in 929 households. The affected individuals included 2,919 children, 1,070 women and 837 men.

On 19 and 25 February 2024, farmer-herder clashes occurred in the communities of Kendev in Mbaikyor ward of Kwande LGA, Ortway in Ikyaghev ward of Gwer LGA and Tse-Agena in Borikyo ward of Ukum LGA in Benue State. Two hundred and ninety shelters and properties of multiple households were damaged or destroyed in the communities as a result of the attacks. There were reports of 26 injuries and four fatalities. The attacks affected 1,747 individuals in 290 households. The affected individuals included 713 children, 565 women and 469 men.

Of all the needs identified, food and non-food items (NFI) were the most prevalent. Other needs include shelter, water, sanitation and hygiene (WASH) and psychosocial support.

Following these events, DTM (Displacement Tracking Matrix) field staff conducted rapid assessments to inform the humanitarian community and Government/partners, and to enable a targeted response.

Nigeria's North-central and North-west zones are afflicted with a multi-dimensional crisis. Long-standing tensions between ethnic and religious groups often result in attacks and banditry or hirabah. These attacks involve kidnapping and grand larceny along major highways by criminal groups. During the past years, the crisis accelerated and has resulted in widespread displacement across the North-central and North-western regions.



Map 1. Showing locations affected by the attacks in Benue State.

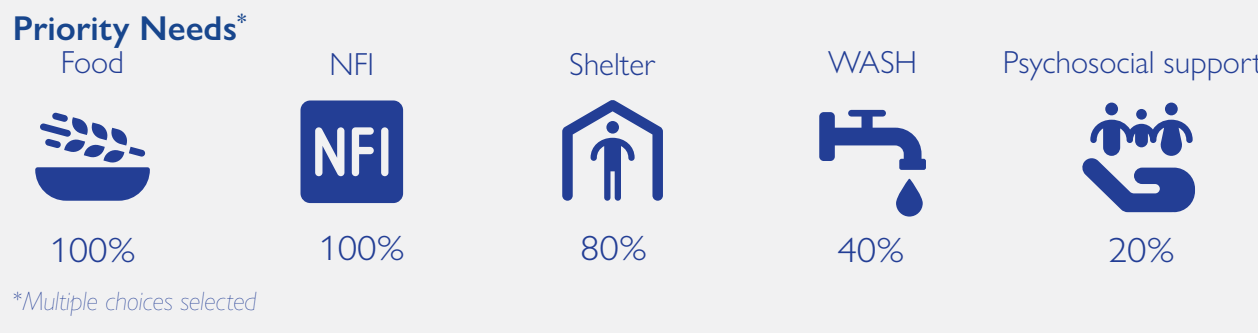


Fig. 1. Most needed assistance

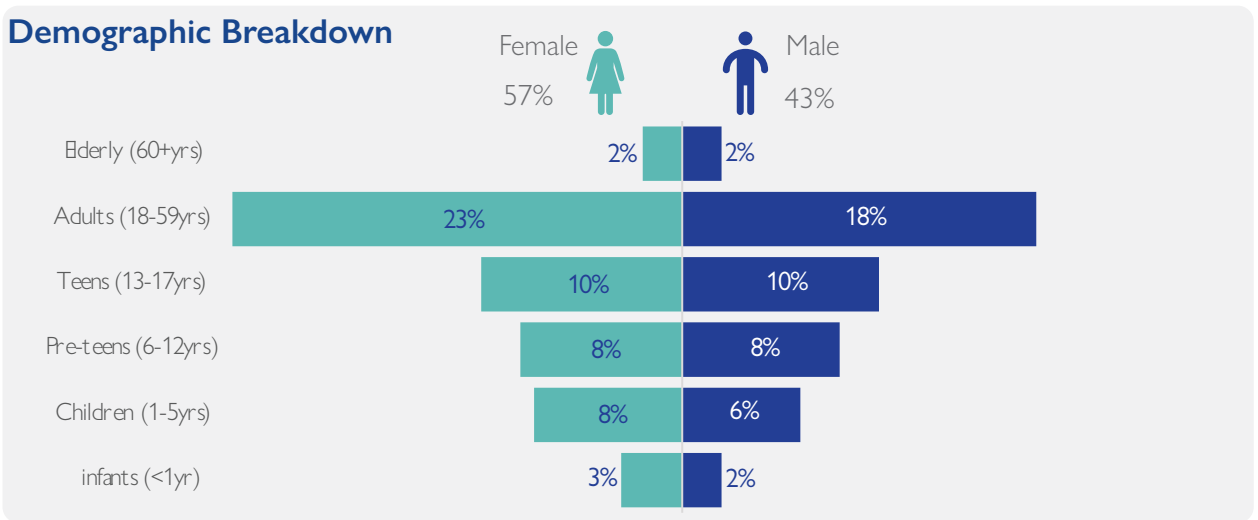
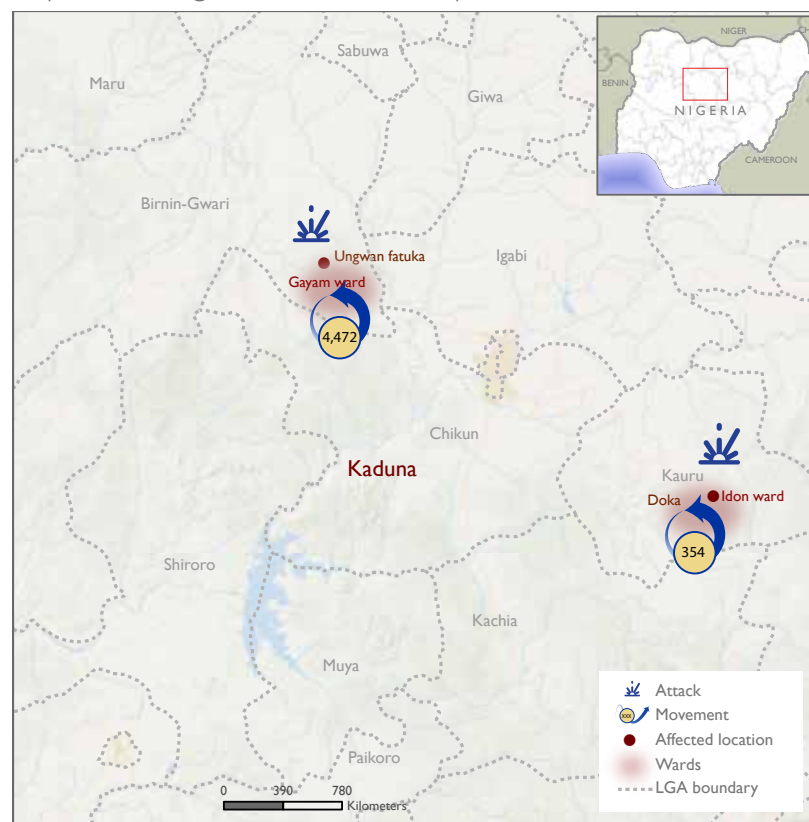


Fig. 2. Gender breakdown of affected population



Map 2. Showing locations affected by the attacks in Kaduna State. This map is for illustration purposes only. The boundaries and names shown, and the designations used on this map do not imply official endorsement or acceptance by the International Organization for Migration.

State	LGA	Ward	Number of Affected Household	Number of Affected Individuals			Casualties	Number of Partially Damaged Shelters	Number of Damaged Shelter
				Male	Female	Total			
Benue	Gwer West	Ikyaghev	45	96	135	231	3	15	30
Benue	Ukum	Borikyo	49	136	176	312	16	44	5
Benue	Kwande	Mbaikyor	196	572	632	1,204	11	193	3
Kaduna	Birnin Gwari	Gayam	870	2,059	2,413	4,472	4	35	0
Kaduna	Kajuru	Idon	59	163	191	354	18	0	10
Total			1,219	3,026	3,547	6,573	52	287	48

Methodology: Crises and emergencies require the humanitarian community to act urgently. As a subcomponent of DTM's mobility tracking, flash reports utilise direct observation and a broad network of key informants to monitor sudden displacement resulting from events like natural disasters or attacks and collect information on the number, profile, and immediate needs of affected populations. In the initial 24 - 48 hours after an incident, DTM Nigeria activates a rapid assessment to document the event, urgent needs of affected individuals, demographic information, and impact. If displacement occurs, DTM Nigeria issues an Early Warning Flash/Incident report within 72 hours, notifying partners and stakeholders.

Disclaimer: The opinions expressed in the report are those of the authors and do not necessarily reflect the views of the International Organization for Migration (IOM). The designations employed and the presentation of material throughout the report do not imply the expression of any opinion whatsoever on the part of IOM concerning the legal status of any country, territory, city or area, or its authorities, or concerning its frontiers or boundaries. "When quoting, paraphrasing, or in any other way using the information mentioned in this report, the source needs to be stated appropriately as follows: "Source: Displacement Tracking Matrix (DTM) of the International Organization for Migration (IOM), February 2024."