

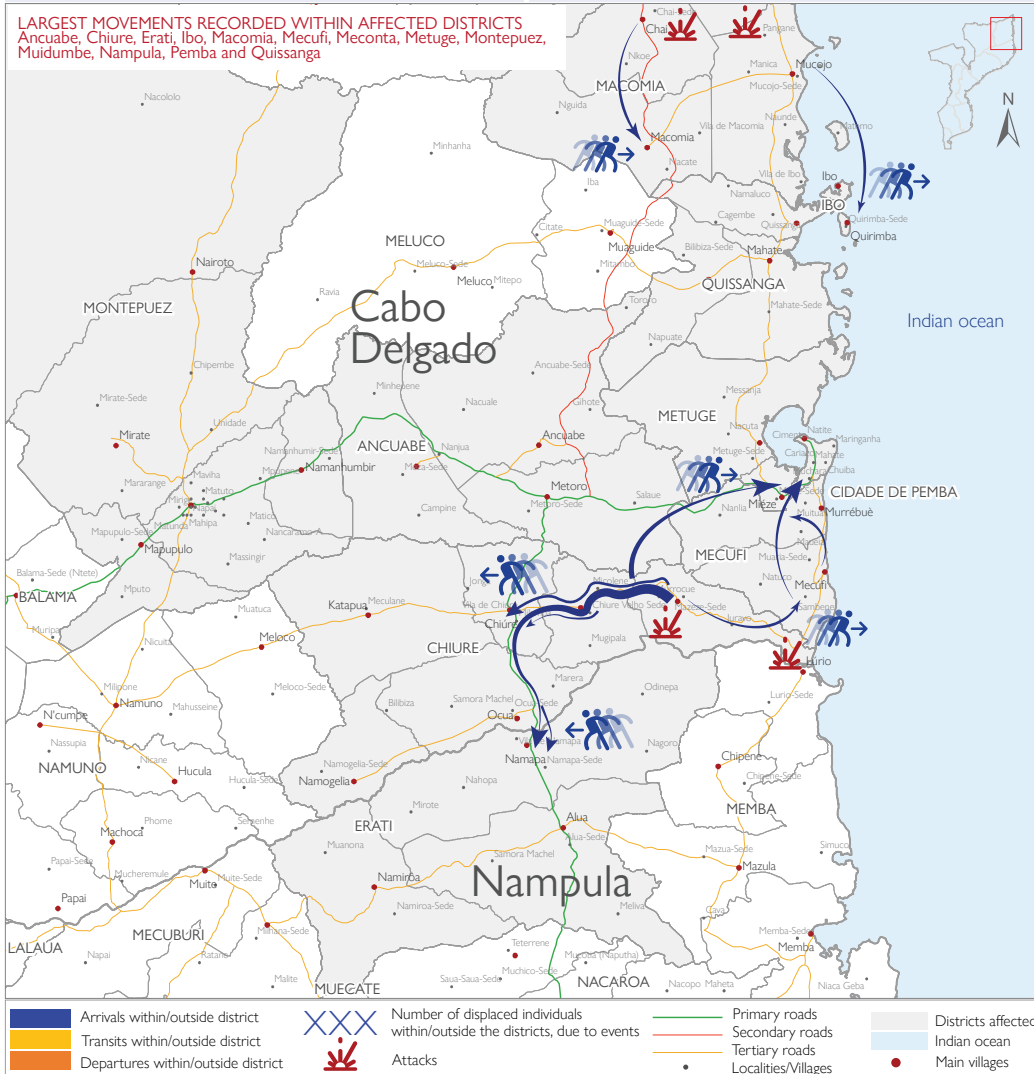
58,116
Cumulative number of displaced individuals
(08 - 25 February 2024)

11,901
Cumulative number of displaced families
(08 - 25 February 2024)

Nature of trigger:
Conflicts/Attacks,
Fear of attacks

Mode of transportation:
Boat/canoe, Bus, walking

LARGEST MOVEMENTS RECORDED WITHIN AFFECTED DISTRICTS
Ancuabe, Chiure, Erati, Ibo, Macomia, Mecufi, Meconta, Metuge, Montepuez, Muidumbe, Namputa, Pemba and Quissanga



Between 22 December 2023 to 25 February 2024, sporadic attacks and fear of attacks by Non-state Armed Groups in Macomia, Chiure, Mecufi, Mocimboa da Praia, and Muidumbe triggered the cumulative displacement **71,681** individuals/**15,470** families. [For more see Emergency Tracking Online Dashboard]. The current Movement Alert #101 reports on recent attacks recorded in Chiure, Macomia, and Mecufi between 8 to 25 February that displaced **58,116** individuals.

Chiure attack | 54,534 Individuals displaced
(10 - 25 February 2024)

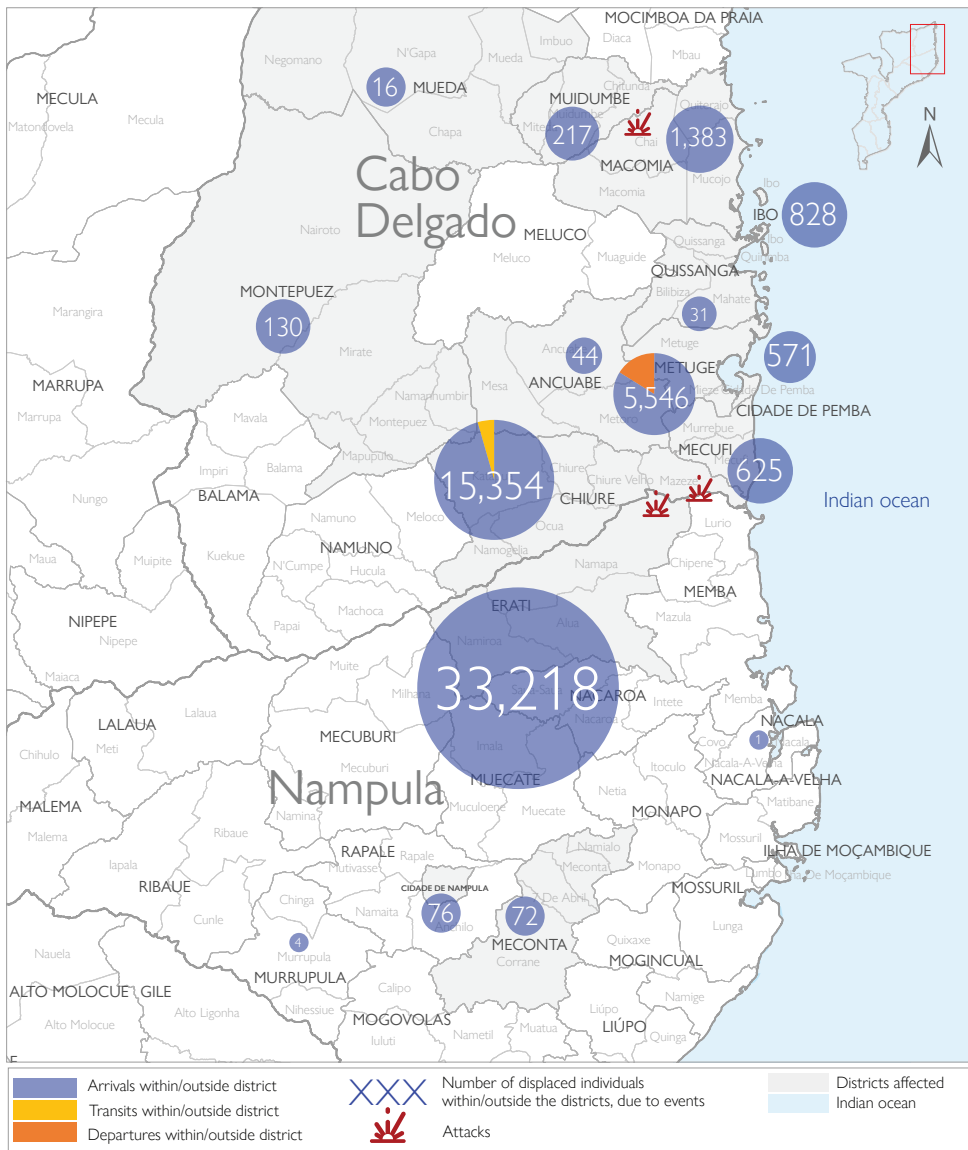
Within the reporting period, attacks and the fear of attacks by Non-State Armed Groups in Chiure (Ocua, Mazeze, Chiure Velho posto) led to the displacement of **54,534** individuals. The affected families have sought refuge in displacement sites and host communities in Chiure, Metuge and Erati. Within displacement sites, **2,405** families with **10,521** individuals have taken refuge in displacement centres of Chiure (Maningane, Muajaja, Kuphe, Namitua, Nahavara, Meriha, and Namisir). In Metuge, **85** families with **305** individuals have taken refuge in displacement centres of Ntocota, Bandar, Ngunga. Over the last 48 hours, a significant influx of **33,218** individuals displaced from Chiure have been received by Namapa host communities (Eratu, Namputa). Interviews with families are ongoing across registration points in Eratu district (Namapa, Odinepa and Alua).

Macomia attack | 2,626 Individuals displaced
(08 - 23 February 2024)

Within the reporting period, attacks and the fear of attacks by Non-State Armed Groups in Macomia district (Mucojo, Pagane, and Chai) led to the displacement of **2,626** individuals. The affected families have sought refuge in displacement sites and host communities in Macomia Sede, Ibo (Ibo Sede, Quirimba), and Pemba Cidade (Natite).

Within displacement sites, **1,144** individuals have been recorded in Xinavane, Nanga A, and Nanga B Centres. Additionally, an estimated **100** families (**366** individuals) have arrived on Ibo Island, while **149** families (**443** individuals) have arrived on Quirimba with intentions to stay with host communities in the coming weeks. Families received in the Natite neighbourhood in Pemba plan to stay with host families in the immediate future.

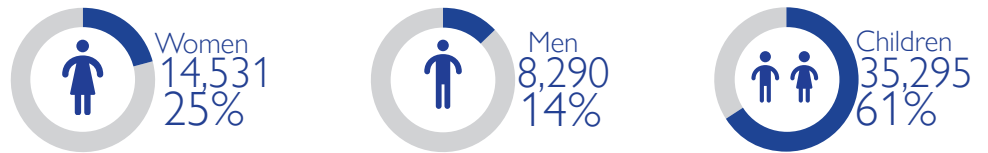
The depiction and use of boundaries, geographic names, and related data shown on maps and included in this report are not warranted to be error free nor do they imply judgment on the legal status of any territory, endorsement or acceptance of such boundaries by IOM.



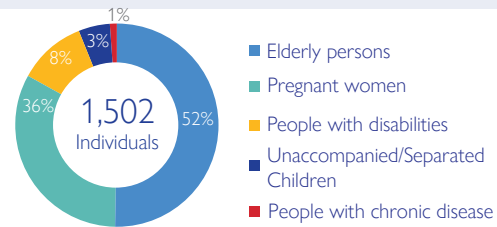
neighbourhood. In Metuge, 58 families (with 232 individuals) have been recorded across neighbourhoods in Mizee. Approximately 31 individuals are displaced within Mecufi. Families received in Pemba and Metuge plan to stay with host families in the immediate future.

Owing to prevailing security concerns in the region reported by displaced families, intentions on duration of their stay in current locations of displacement sites and host communities remains uncertain. The objective of the Emergency Tracking Tool (ETT) - Movement Alert is to collect information on large and sudden population movements, providing humanitarian response partners with data on IDPs to support effective humanitarian response. Information is collected through key informants' interviews or direct observation. This alert provides basic information on displacements, and additional information can be shared upon request.

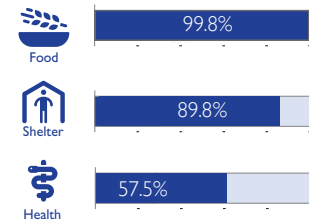
DEMOGRAPHIC PROFILE



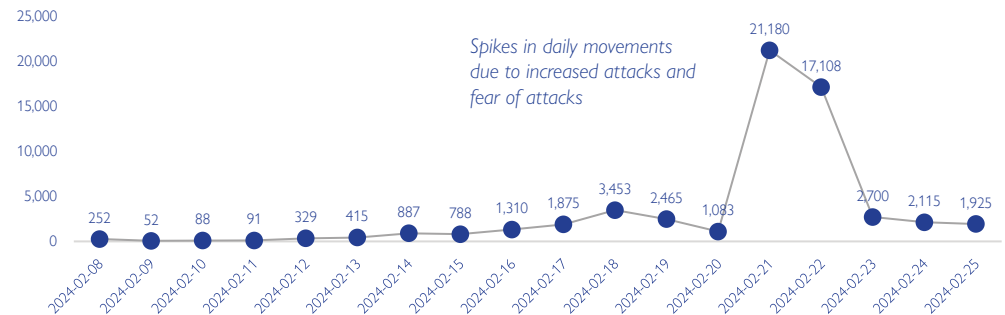
VULNERABILITIES



URGENT NEEDS



TREND: DISPLACED INDIVIDUALS



Mecufi attack | 589 Individuals displaced (08 - 24 February 2024)

Within the reporting period, attacks and the fear of attacks by Non-State Armed Groups in Mecufi led to the displacement of 589 individuals. The affected families have sought refuge in displacement sites and host communities in Pemba, Metuge and Mecufi. In Pemba, 65 families with 296 individuals have taken refuge in Metula

MOVEMENT FLOW: (Postos of departure and posto of destination)

Origin

Destination

