

FLASH REPORT: POPULATION DISPLACEMENT FROM PLATEAU TO BAUCHI

North-central and North-west Nigeria



Affected Population:
2,003 Individuals



Damaged Shelters:
245



Casualties:
128



Movement Trigger:
Attack

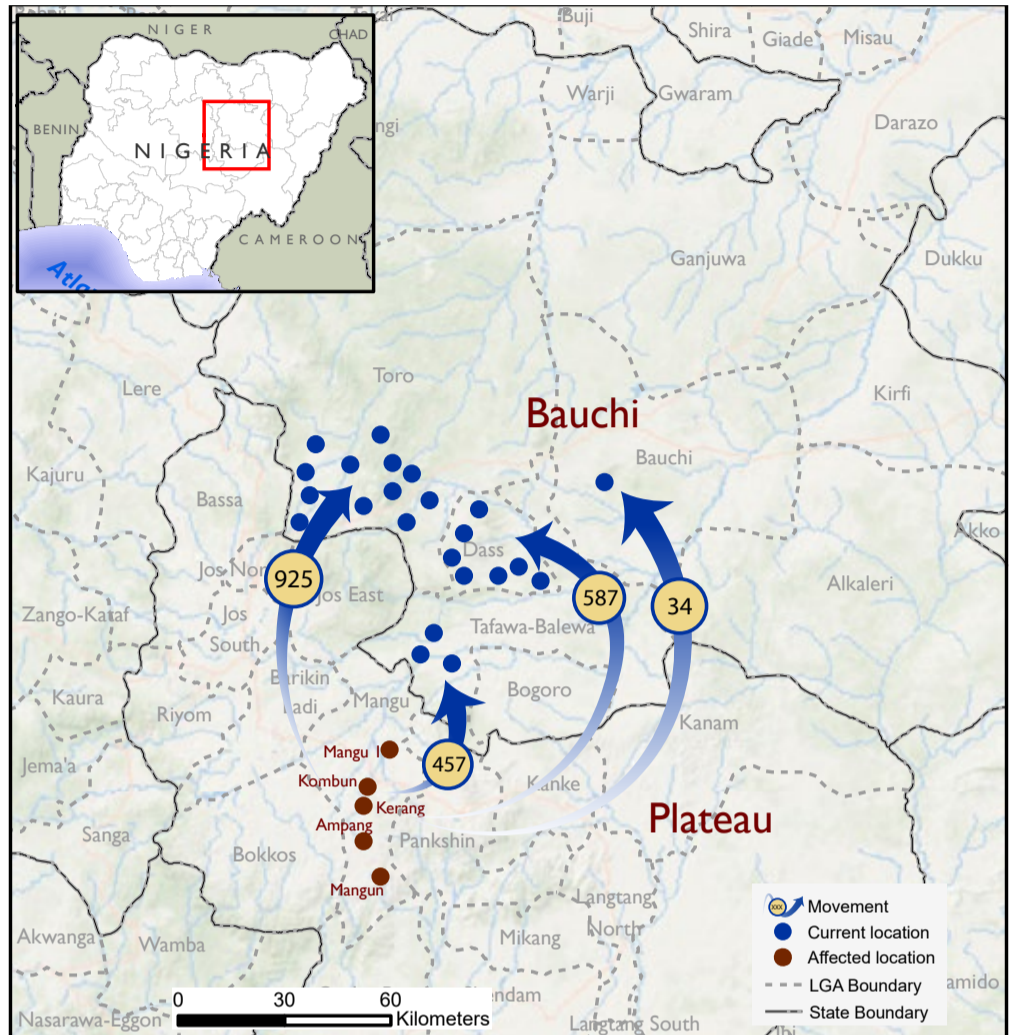
OVERVIEW

Between 1 January and 20 February 2024, armed bandits carried out attacks on various communities Ampang ward, Kombul ward, Mangu ward and Mangu I ward in Plateau State. The specific communities affected include Bakin Kasuwa, Anguwan Sarki, Kofar Fada, Sabon Gari, Mairana, Mangu, Kinat, Kwahasalalek, Sabgoro, Matele, Dis, Panyam and Gangaran Kwata. The attacks affected 2,003 individuals and displaced them to communities of Nahuta, Banko, Unguwan Magaji, Gwaltukurwa, Lusa, Gajiwal and Kuletu in Dass LGA, Rimi Zayam, Anguwan Sarki, Sabon Gari, Nasarawa, Anguwan Rimi, Kawuli, Kara, Kassa B, Juwait, Kampawul and Rinji in Toro LGA, Boto, Anguwan Geate, Kofar Bai, Pans Sarki and Lere Primary School in Tafawa Balewa LGA and Liman Katagum in Bauchi LGA, all in Bauchi State. As a result of the attacks, 66 fatalities and 62 injuries were reported.

Following these events, Displacement Tracking Matrix (DTM) field staff conducted rapid assessments to inform the humanitarian community and Government/partners, and to enable a targeted response. Flash reports utilise direct observation and a broad network of key informants to gather representative data and collect information on the number, profile, and immediate needs of affected populations.

Nigeria's North-central and North-west zones are afflicted with a multi-dimensional crisis. Long-standing tensions between ethnic and religious groups often result in attacks and banditry or hirabah. These attacks involve kidnapping and grand larceny along major highways by criminal groups. During the past years, the crisis accelerated and has resulted in widespread displacement across the North-central and North-western regions.

Map of the affected areas



Map 1: Location of incident in Plateau State and current location in Bauchi State.

The maps are for illustration purposes only. The boundaries and names shown and the designations used on this map do not imply official endorsement or acceptance by International Organization for Migration.



Fig. 2: Most needed assistance [Multiple response]

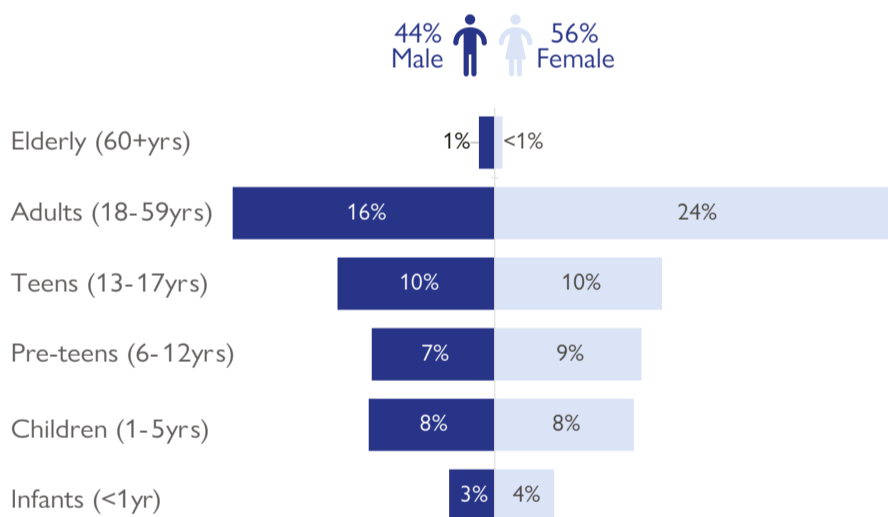


Fig. 1: Gender breakdown of the affected population

Table 1: Affected individuals and LGAs

State	Location of Incident			Current location				Household	Individuals	
	LGA	Ward	location	State	LGA	Ward	location			
Plateau	Mangu	Ampang	Bakin Kasuwa	Bauchi	Dass	Bununu Central	Banko	10	52	
			Unguwan Sarki			Bununu South	Nahuta	16	64	
			Bakin Kasuwa			Bundot	Unguwan Magaji	43	188	
		Kombul	Bakin Kasuwa		Bauchi	Toro	Zungur Liman Katagum	Liman Katagum	5	34
							Toro/Tulai	Kampawul	10	68
							Ribina	Rinji	6	38
							Bununu South	Gajiwal	22	96
							Wandi	Gwaltukurwa	12	62
							Dott	Lusa	6	41
							Jama'A Zaranda	Kuletu	15	84
	Mangu I	Mangu	Bauchi	Toro	Mara/Palama	Anguwan Sarki	6	49		
					Tilden Fulani	Sabon Gari	7	61		
					Ribina	Rimin Zayam	4	27		
					Toro /Tulai	Bukaji	7	41		
					Ribina	Anguwan Rimi	30	192		
					Toro /Tulai	Kawuli	12	47		
					Toro /Tulai	Anguwan Nasarawa	16	92		
					Ribina	Kara	27	149		
					Toro /Tulai	Kassab	11	57		
					Toro /Tulai	Juwait	17	104		
Tafawa Balewa	Mangu I	Bauchi	Tafawa Balewa	Lere North	Kofar Bai	15	76			
				Lere North	Lere Pry Sch	6	32			
				Kardam B	Anguwan Geate	10	56			
				Lere North	Pans Sarki	8	46			
				Kardam B	Boto	40	247			
				Kardam B	Boto	40	247			
Total							361	2,003		

When quoting, paraphrasing, or in any other way using the information mentioned in this report, the source needs to be stated appropriately as follows: "Source: Displacement Tracking Matrix (DTM) of the International Organization for Migration (IOM), Nigeria Mission, February 2024."

For more information or to report an alert, please contact: DTMNigeria:iomnigeriadtm@iom.int, <http://dtm.iom.int/nigeria>.

