



Affected Population:
653 Individuals



Damaged Shelters:
239



Casualties:
52



Movement Trigger:
Attack/Windstorms

OVERVIEW

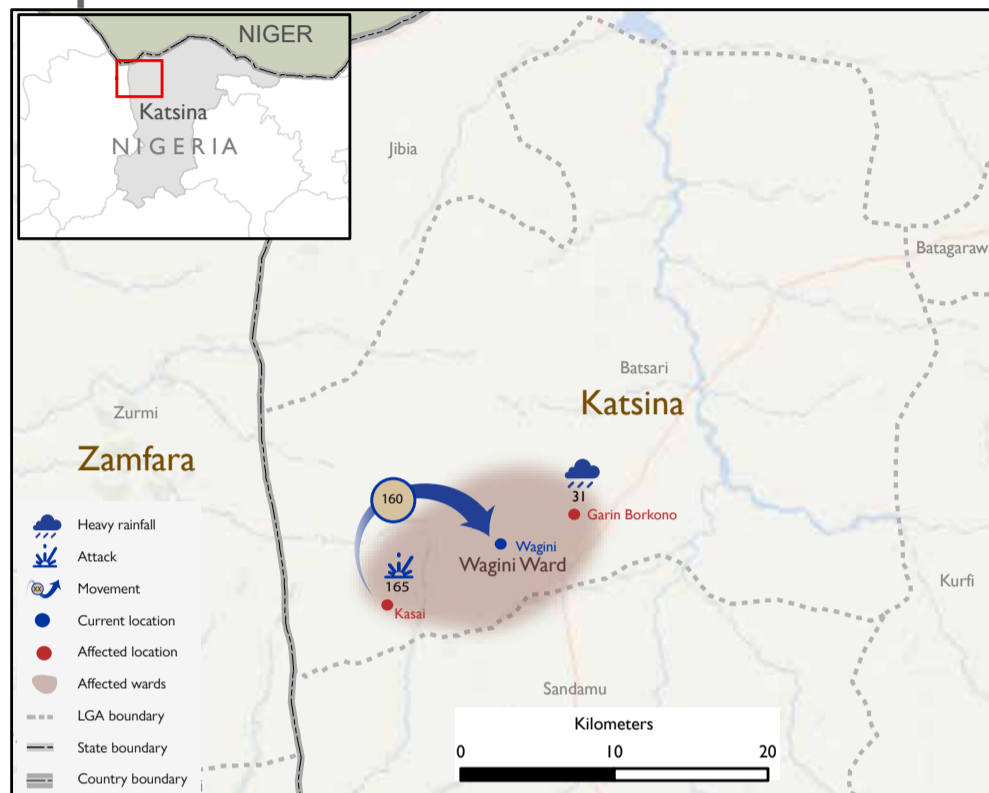
Armed bandits attacked the community of Kasai in Wagini Ward of Batsari LGA in Katsina State on 05 July. The attack affected 165 individuals, displacing 160 individuals to Wagini Town in Wagini Ward. As a result of the incident, five people were killed and 11 people were injured.

Windstorms also hit the communities of Garin Borkono in Wagini Ward of Batsari LGA and Sabuwar Unguwa and Yangaiya in Wakilin Kudu III Ward of Katsina LGA in Katsina State on 04 and 05 July. The storm affected 488 people and displaced 397 from Sabuwar Unguwa to Tudun Matawalle in Wakilin Kudu II Ward. As a result of the windstorm, seven people were killed in Sabuwar Unguwa and 29 people were injured in Sabuwar Unguwa and Yangaiya.

Following these events, displacement tracking matrix (DTM) field staff conducted rapid assessments to inform the humanitarian community and Government/partners, and to enable a targeted response. Flash reports utilise direct observation and a broad network of key informants to gather representative data and collect information on the number, profile, and immediate needs of affected populations.

Nigeria's North-central and North-west zones are afflicted with a multi-dimensional crisis. Long-standing tensions between ethnic and religious groups often result in attacks and banditry or hirabah. These attacks involve kidnapping and grand larceny along major highways by criminal groups. During the past years, the crisis accelerated and has resulted in widespread displacement across the North-central and North-western regions.

Maps of the affected areas



Map 1: Location of incident in Benue State.

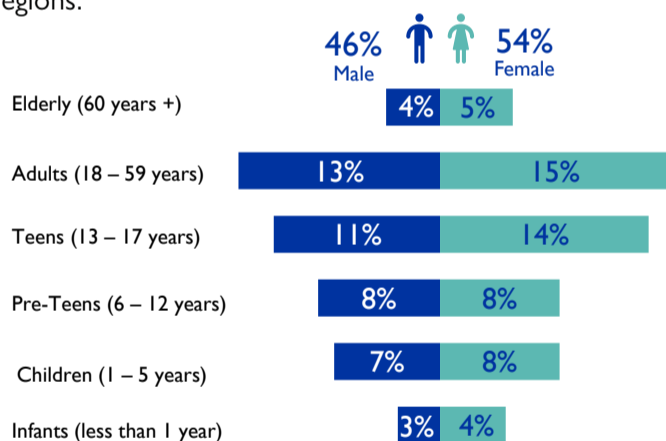
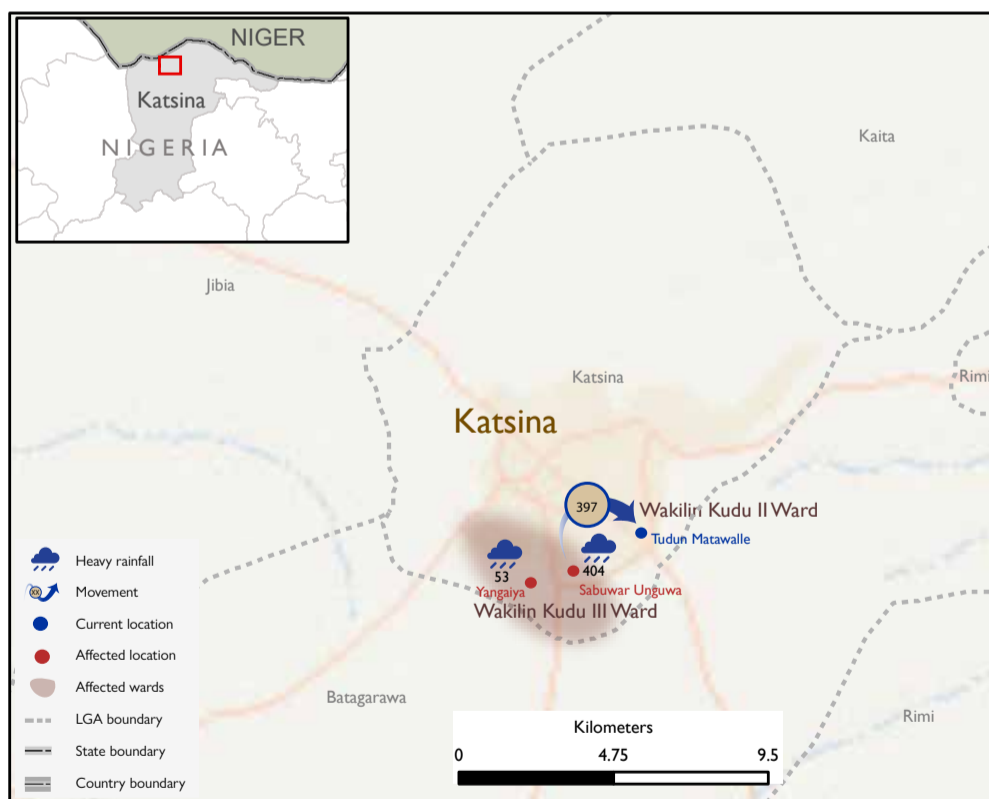


Fig. 1: Gender breakdown of the affected population



Fig. 2: Most needed assistance



Map 2: Location of incident in Katsina State.

The maps are for illustration purposes only. The depiction and use of boundaries, geographic names and related data shown are not warranted to be error-free nor do imply a judgment on the legal status of any territory, or any endorsement or acceptance of such boundaries by IOM.

Table 1: Affected individuals and LGAs

State	LGA	Cause of incident	Number of affected households	Number of affected individuals				Casualties	Number of partially damaged shelter	Number of fully damaged shelter
				Male	Female	Total	Children			
Katsina	Katsina	Windstorm	79	211	246	457	288	36	138	70
Katsina	Batsari	Attacks	30	72	93	165	110	16	15	0
Katsina	Batsari	Windstorm	5	14	17	31	17	0	11	5
Total			114	297	356	653	415	52	164	75

"When quoting, paraphrasing, or in any other way using the information mentioned in this report, the source needs to be stated appropriately as follows: "Source: Displacement Tracking Matrix (DTM) of the International Organization for Migration (IOM), Nigeria Mission, July 2023."

For more information or to report an alert, please contact: DTMNigeria:iomnigeriadtm@iom.int, http://dtm.iom.int/nigeria.

