



Individuals Affected
13,033



Damaged Shelters
487



Casualties
40



Movement Trigger:
Attacks

OVERVIEW

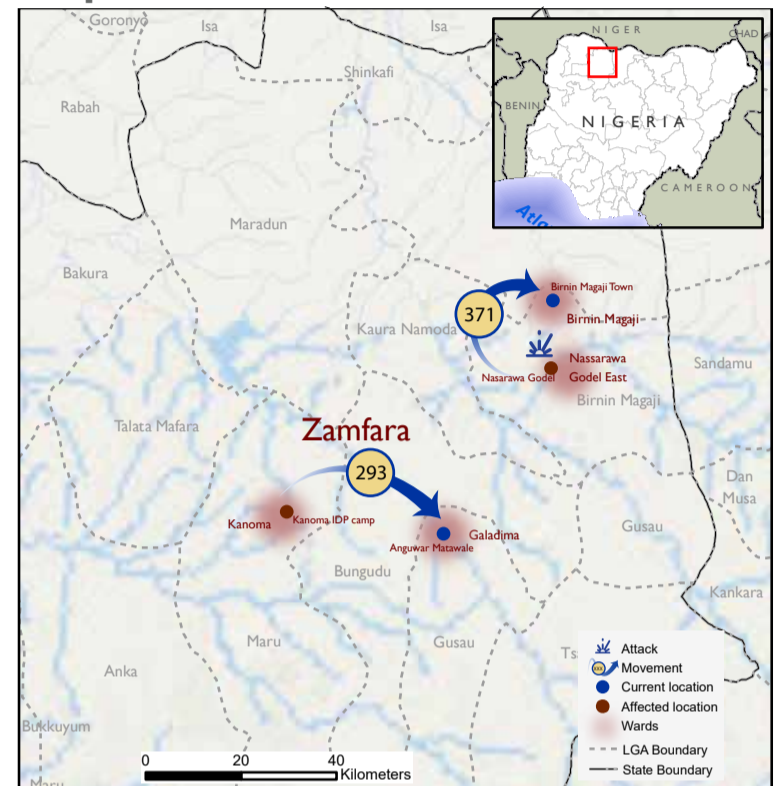
Between 14 and 15 February, armed bandits carried out attacks in Kanoma and Nasarawa Godal East Wards in Maru and Birnin Magaji LGAs of Zamfara State. These attacks resulted in the displacement of a significant number of people. An estimated 664 individuals from 114 households were forced to flee their homes and seek refuge in nearby communities or makeshift shelters.

Meanwhile, between 15 and 18 February, farmer-herder attacks were reported in several wards in Apa, Agatu and Guma LGAs in Benue State. As a result of the attacks, a total of 12,369 individuals from 2,105 households were displaced from their homes forcing them to seek refuge in neighbouring communities. There were 40 fatalities and 149 injuries reported as a result of the attacks.

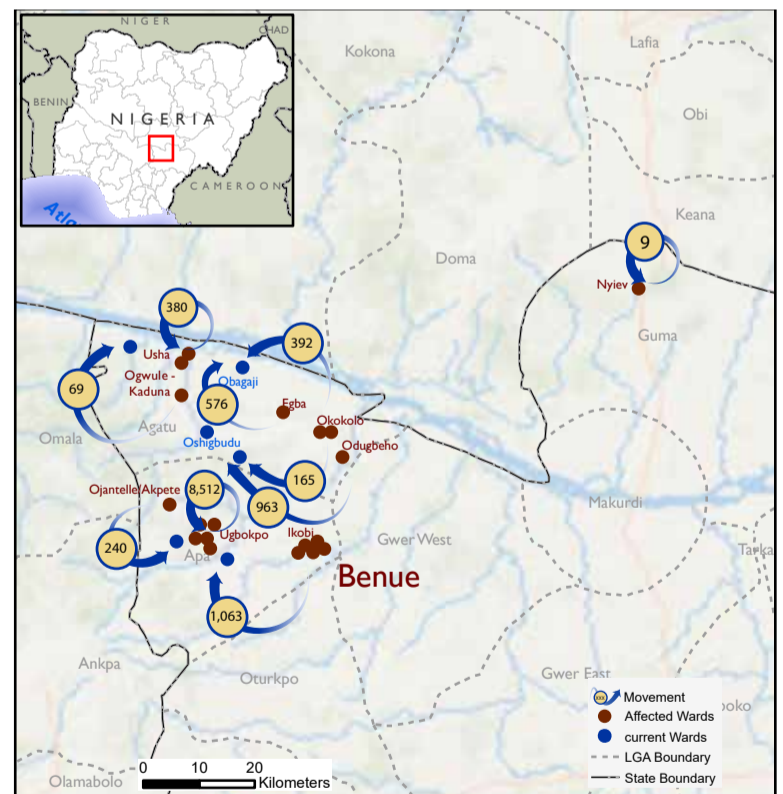
Following these events, the Displacement Tracking Matrix (DTM) deployed a rapid assessment team to evaluate the immediate needs and vulnerabilities of the affected population with the purpose of informing the humanitarian community and the Government partners, and enabling targeted response.

Flash reports utilise direct observation and a broad network of key informants to gather representative data and collect information on the number, profile, and immediate needs of affected populations.

Maps of the affected areas



Map 1. Locations of incident in Zamfara State.



Map 2. Locations of incident in Benue State.

The map is for illustration purposes only. The depiction and use of boundaries, geographic names and related data shown are not warranted to be error-free nor do they imply a judgment on the legal status of any territory, or any endorsement or acceptance of such

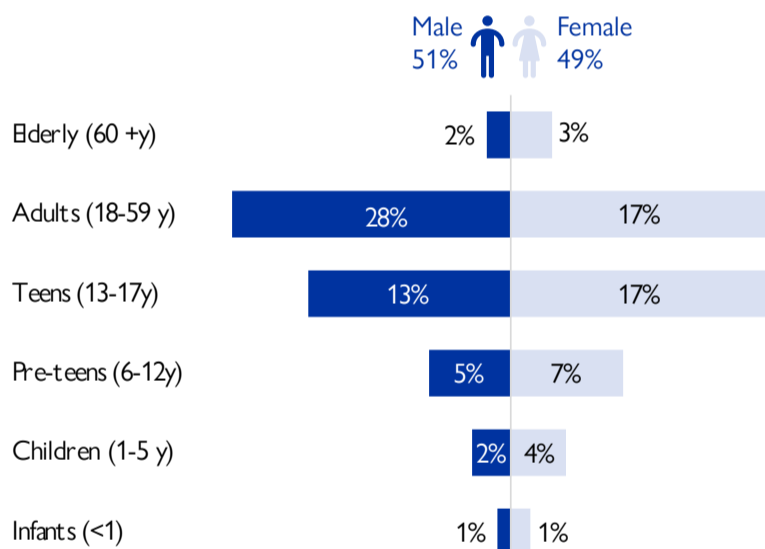


Fig. 1. Gender breakdown of the affected population

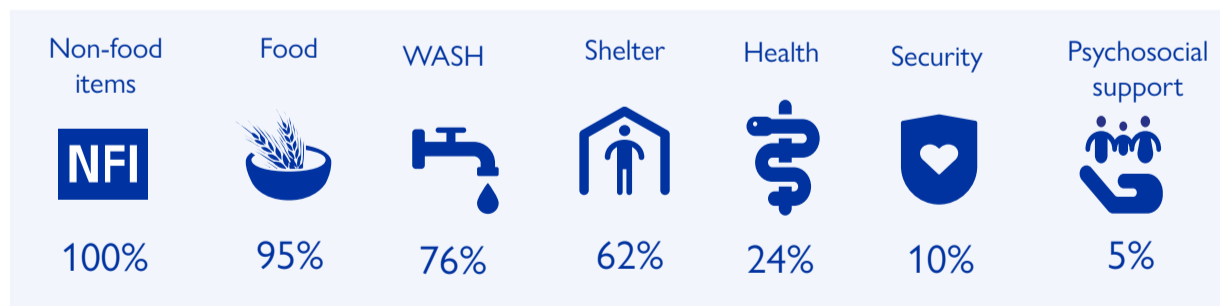


Fig. 2. Most needed assistance

Table 1. Affected individuals and LGAs

State	LGA	Cause of incident	Number of affected households	Number of affected individuals			Casualties	Number of partially damaged shelters	Number of fully damaged shelters
				Male	Female	Total			
Benue	Agatu	Farmer-Herder Clash	422	1,054	1,491	2,545	8	424	1
	Apa	Farmer-Herder Clash	1,681	4,344	5,471	9,815	32	1,226	477
	Guma	Farmer-Herder Clash	2	6	3	9	0	0	9
Zamfara	Birnin Magaji	Armed banditry/Kidnapping	55	146	225	371	0	0	0
	Maru	Armed banditry/Kidnapping	59	116	177	293	0	0	0
Total			2,219	5,666	7,367	12,369	40	1,650	487

*When quoting, paraphrasing, or in any other way using the information mentioned in this report, the source needs to be stated appropriately as follows: "Source: Displacement Tracking Matrix (DTM) of the International Organization for Migration (IOM), Nigeria Mission, February 2024."

For more information or to report an alert, please contact: DTMNigeria:iomnigeriadtm@iom.int, <http://dtm.iom.int/nigeria>.



USAID
FROM THE AMERICAN PEOPLE

