

DISPLACEMENT TRACKING MATRIX — NIGERIA EMERGENCY TRACKING TOOL (ETT)

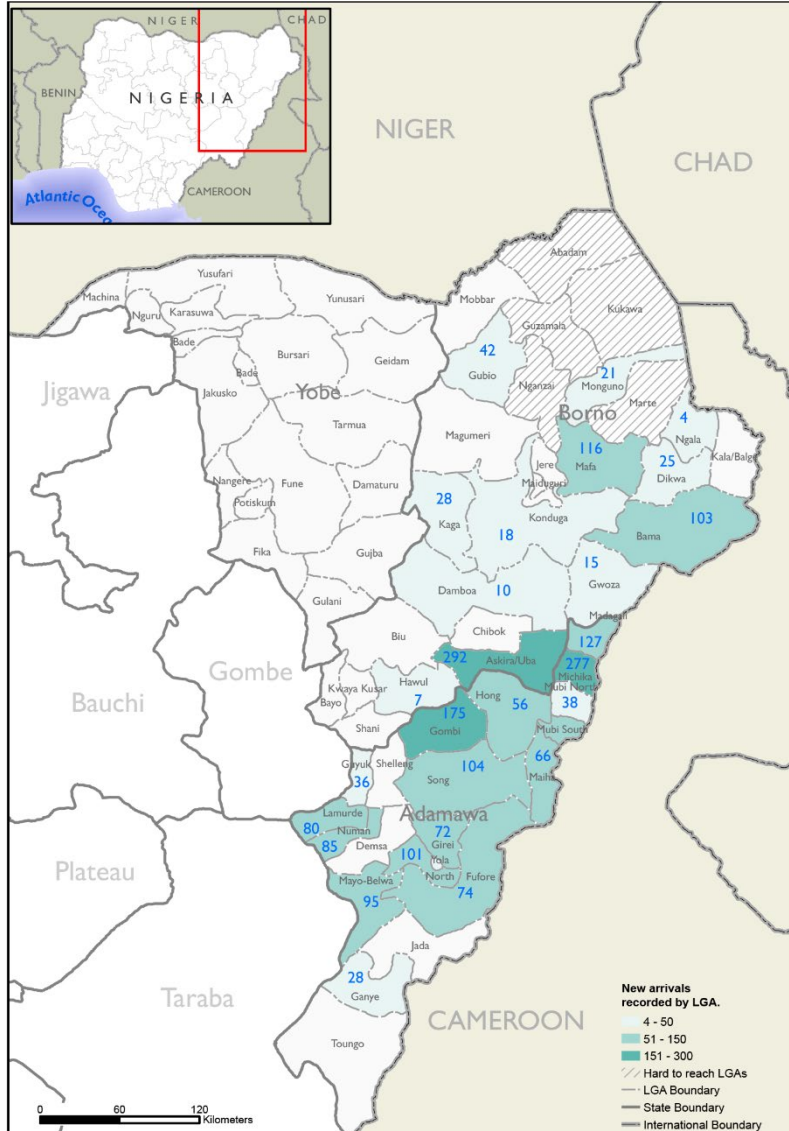
SUMMARY OF MOVEMENTS IN BORNO AND ADAMAWA STATES, 22 – 28 JANUARY 2024

DASHBOARD: 364

DATA COLLECTION: Week 4, 2024

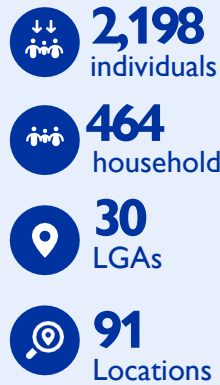
DATE OF PUBLICATION: 01 February 2024

OVERVIEW OF DISPLACEMENTS

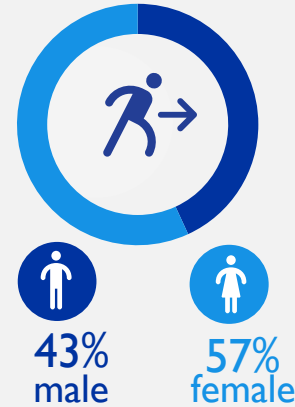


This map is for illustration purposes only. Names and boundaries on this map do not imply official endorsement or acceptance by IOM.

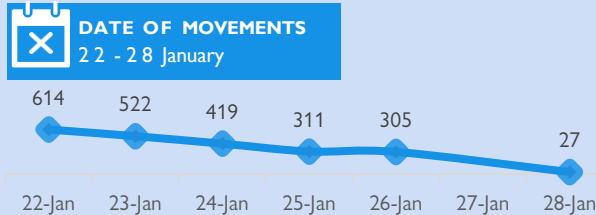
KEY FIGURES



GENDER BREAKDOWN



DISPLACEMENT EVOLUTION



TOP REPORTED NEEDS*



TOP AREAS OF ORIGIN



*Multiple-choice response

METHODOLOGY

The DTM Emergency Tracking Tool (ETT) is deployed to track and collect information on large and sudden population movements, provide frequent updates on the scale of displacement and quantify the affected population when needed. As a sub-component of the mobility tracking methodology in Nigeria, ETT utilizes direct observations and a broad network of key informants to capture the best estimates of the affected population per location, enabling targeted humanitarian response planning.

LIMITATIONS

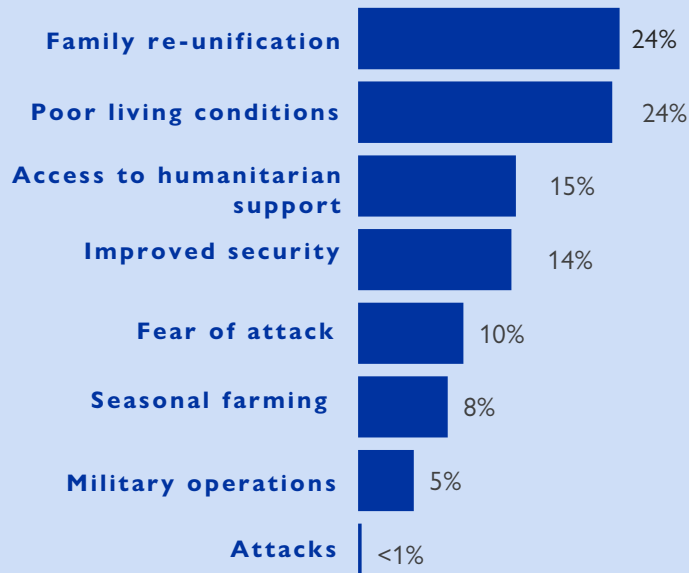
The ETT figures reported are not cumulative of all the affected persons thus far but rather provide a snapshot of the current displacement situation on the date indicated. The data and information reported on this dashboard are related solely to the movements caused by the triggers on page two between 22 - 28 January.

ALERT SUMMARY

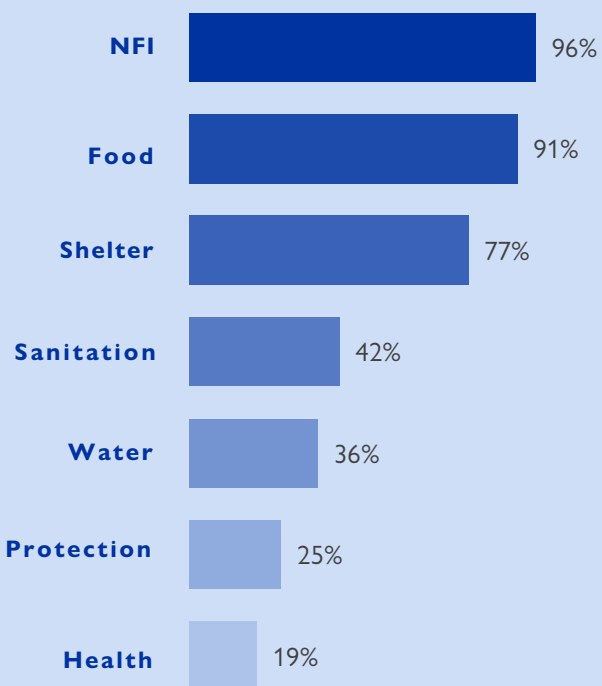
Between 22 and 28 January 2024, a total of 2,198 new arrivals were recorded at locations in Adamawa and Borno states. The new arrivals were recorded at locations in Askira/Uba, Bama, Damboa, Dikwa, Gubio, Gwoza, Hawul, Kaga, Kala/Balge, Mafa, Monguno and Ngala Local Government Areas (LGAs) of the most conflict-affected Borno State and in Fufore, Ganye, Girei, Gombi, Guyuk, Hong, Lamurde, Madagali, Maiha, Mayo-Belwa, Michika, Mubi North, Mubi South, Numan, Song, Yola North and Yola South LGAs of Adamawa State.

ETT assessments identified the following movement triggers: family reunification (532 individuals or 24%), poor living conditions (517 individuals or 24%), access to humanitarian support (321 individuals or 15%), improved security (310 individuals or 14%), fear of attack (214 individuals or 10%), seasonal farming (182 individuals or 8%), military operations (113 individuals or 5%) and attacks (7 individuals or <1%).

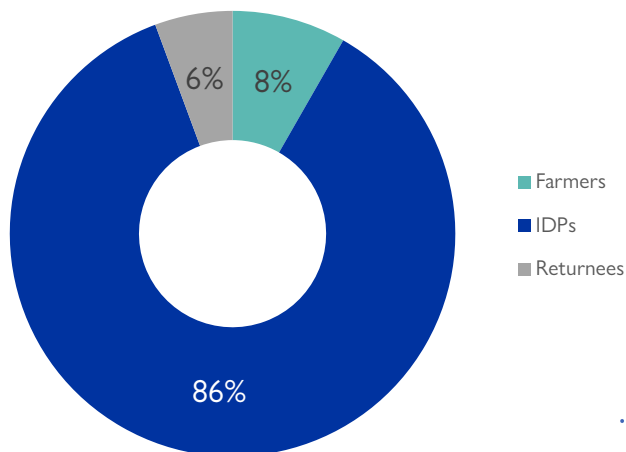
PERCENTAGE OF INDIVIDUALS BY MOVEMENT TRIGGER



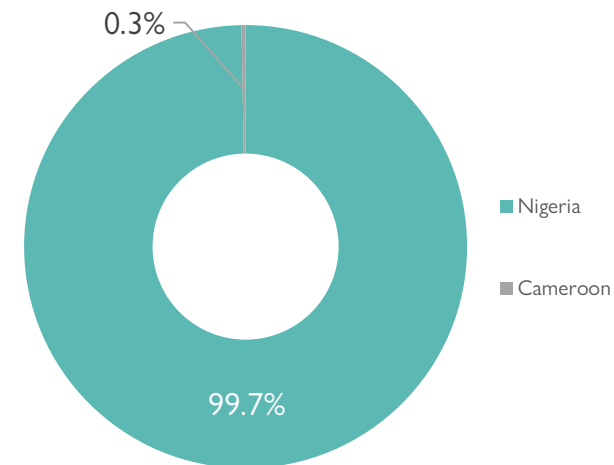
NEEDS EVOLUTION*



ARRIVING POPULATION



COUNTRY OF DEPARTURE OF THE POPULATION



NEW ARRIVALS SCREENING BY NUTRITION PARTNERS



442 MUAC

Children (6 – 59 months)
Screened for malnutrition.
Category of screened children.

Green: 388

Yellow: 45

Red: 9

MALNUTRITION SCREENING SUMMARY OF THE NEW ARRIVALS (CHILDREN 6 – 59 MONTHS)

Between 22 and 28 January 2024, an exhaustive nutrition screening using Mid-Upper Arm Circumference (MUAC) and oedema for acute malnutrition was conducted by sector partners for 442 children of 6-59 months. Of the 442 children screened, the MUAC reading indicated that nine children were recorded in the red category, 45 children in the yellow category and 388 children in the green category. No case of oedema was reported in the six LGAs assessed.

Among the 442 children screened, 354 arrived from neighbouring countries (2 in Kala Balge and 352 in Mobbar); of all the 354 children measured; 326 were in green, 26 were in yellow and two were in the red category. All children found with acute malnutrition have been admitted to the treatment programme.

LGA	MUAC Categories						Total
	Green (≥12.5cm)		Yellow (11.5cm – 12.5cm)		Red (<11.5cm)		
	Inaccessible	Accessible	Inaccessible	Accessible	Inaccessible	Accessible	
Bama	44	0	17	0	7	0	68
Dikwa	4	0	1	0	0	0	5
Gwoza	5	0	0	0	0	0	5
Kala Balge	0	5	0	1	0	0	6
Mobbar	0	324	0	26	0	2	352
Monguno	6	0	0	0	0	0	6
Total	59	329	18	27	7	2	442

Please note, the data presented above are not surveillance results and should be interpreted

■ Nourished
 ■ Moderate Acute Malnutrition (MAM)
 ■ Severe Acute Malnutrition (SAM)

*Multiple-choice response

DISPLACEMENT BREAKDOWN — only the movements with 21 persons and above are listed below.

State	Arrival location		Movement location			Number of individuals	
	LGA	Ward	State	LGA	Ward		
Adamawa	Fufore	Pariya	Adamawa	Gombi	Gombi South	22	
		Beti		Song	Song Waje	26	
	Girei	Modire/ Vinikilang	Adamawa	Yola South	Adarawo	26	
		Gombi South		Michika	Michika I	37	
	Gombi	Tawa	Borno	Chibok	Chibok Garu	44	
			Adamawa	Yola North	Jambutu	23	
		Gabun	Adamawa	Borno	Gwoza	Johode/Chikide/Kughum	30
				Garkida	Girei	Dakri	29
	Hong	Garaha	Adamawa	Madagali	Madagali	22	
		Hildi		Hong	Thilbang	35	
	Madagali	Madagali	Adamawa	Mubi North	Muchalla	21	
				Gombi	Garkida	22	
	Michika	Bazza Margi	Adamawa	Madagali	Wagga	34	
					Gulak	32	
		Thukudou / Sufuku / Zah		Yola North	Gwadabawa	52	
				Ajiya	24		
	Futudou / Futules	Wagga	34				
			Mubi North	Bahuli	Borno	Gwoza	Pulka /Bokko
	Mubi South	Lamorde	Borno	Askira / Uba	Kopa / Multhafu	33	
	Song	Song Waje	Adamawa	Fufore	Pariya	26	
				Mubi North	Lokuwa	26	
	Yola South	Namtari	Adamawa	Gombi	Tawa	24	
		Adarawo		Fufore	Beti	25	
	Mayo - Belwa	Mayo - Belwa	Adamawa	Mayo - Belwa	Binyeri	31	
Mayo Farang					23		
Lamurde	Lamurde	Adamawa	Lamurde	Waduku	43		
			Numan	Imburu	37		
Borno	Askira/Uba	Zadawa/Hausari	Adamawa	Girei	Damare	38	
		Askira East	Borno	Dambo	Dambo	27	
		Uda / Uvu	Adamawa	Chibok	Chibok Garu	42	
		Uba		Jada	Mayokalay	26	
		Wamdeo/Giwi		Madagali	Wagga	36	
	Bama	Shehuri / Hausari / Mairi	Borno	Bama	Mbuliya/Goniri/Siraja	39	
					Yabiri Kura/Yabiri Gana/Chongolo	37	
	Kaga	Benisheikh	Borno	Kaga	Borgozo	28	
	Monguno	Monguno	Borno	Abadam	Yau	21	
	Gubio	Gubio li	Borno	Gubio	Ngetra	42	
Mafa	Mafa	Borno	Mafa	Loskuri	111		