



Affected Population:
9,965 Individuals



Damaged Shelters:
24



Casualties:
44



Affected Locations:
4



Movement Trigger:
Attack

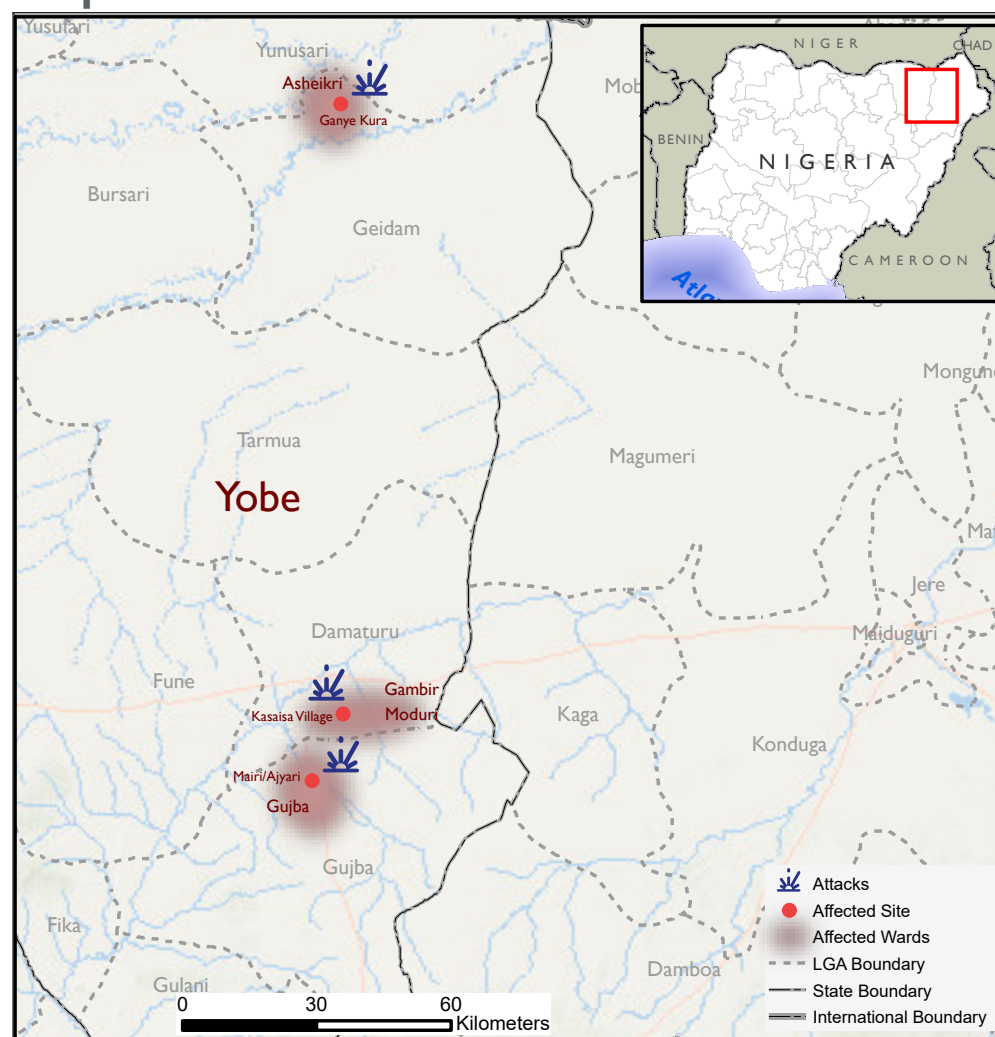
OVERVIEW

The lingering conflict in Nigeria's Northeast region has been the major cause of widespread population displacement. Over two million persons have been forced to leave their areas of residence to other parts of Nigeria in search of safety and security in neighbouring wards and LGAs.

On 6 January 2024, a Non-State Armed Group (NSAG) carried out an attack in Gujba, Asheikri and Gabir/Maduri wards in Gujba, Geidam and Damaturu LGAs of Yobe State, leading to a substantial wave of population displacement. Following the attack, IOM-DTM Nigeria deployed a rapid assessment team to evaluate the immediate needs and vulnerabilities of the affected population with the purpose of informing the humanitarian community and government partners, and enabling targeted response. Flash reports utilise direct observation and a broad network of key informants to gather data and collect information on the number, profile and immediate needs of the affected population.

As a result of the attack, a total of 9,965 individuals from 1,536 households were displaced from their homes forcing them to seek refuge in nearby communities or makeshift shelters.

Maps of the affected areas



Map 1: Location of incident in Yobe State

This map is for illustration purposes only. The boundaries and names shown and the designations used on this map do not imply official endorsement or acceptance by International Organization for Migration.

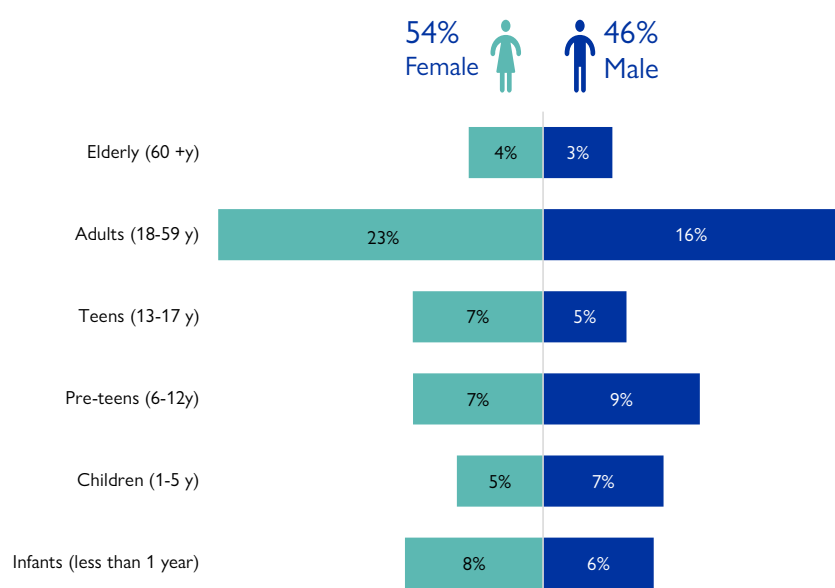


Fig. 1: Gender breakdown of the affected population

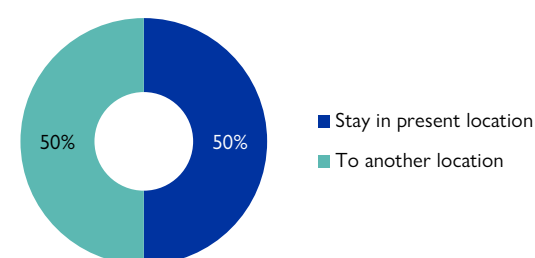


Fig. 2: Movement intention

Table 1: Affected individuals and LGAs

State	LGA	Ward	Current Locations	Site Type	Number of affected households	Number of affected individuals				Casualties	Number of partially damaged	Number of fully damaged
						Male	Female	Total	Children			
Yobe	Gujba	Gujba	Mairi/Ajiyari	Host Communities	1500	4530	5220	9750	5160	6	0	-
Yobe	Gujba	Gujba	Mairi/Ajiyari	Host Communities	13	39	52	91	73	11	3	-
Yobe	Geidam	Asheikri	Ganye Kura	Host Communities	13	29	55	84	23	20	8	-
Yobe	Damaturu	Gabir/Maduri	Kasaisa Village	Collective Settlement/Centre	10	21	19	40	16	7	13	-
Total					1,536	4,619	5,346	9,965	5,272	44	24	0

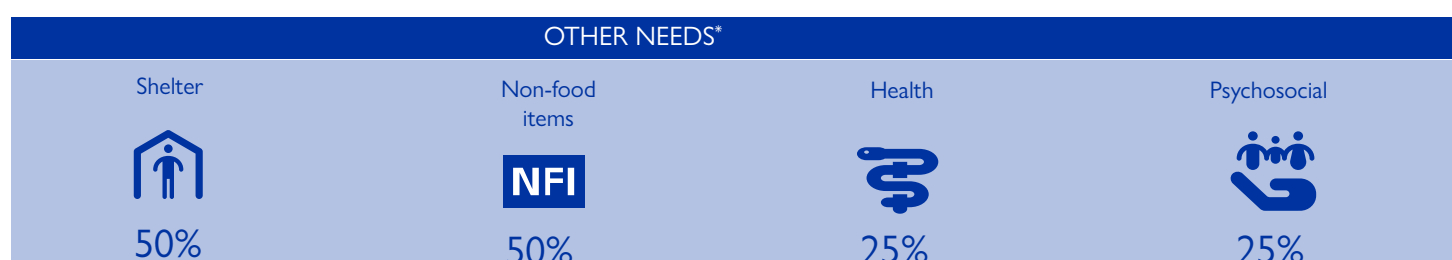


Fig. 3: Most needed assistance

*Multiple response

When quoting, paraphrasing, or in any other way using the information mentioned in this report, the source needs to be stated appropriately as follows: "Source: Displacement Tracking Matrix (DTM) of the International Organization for Migration (IOM), Nigeria Mission, January 2024."

For more information or to report an alert, please contact: DTMNigeria:iomnigeriaatm@iom.int, <http://dtm.iom.int/nigeria>.



USAID
FROM THE AMERICAN PEOPLE

