

NIGERIA — IDP AND RETURNEE ATLAS

NORHT-EAST — ROUND 46

(DECEMBER 2023)



Photo: Elmiskin Camp I, Maiduguri © IOM 2023 / Oluwafemi ISELOWO



Nigeria
Humanitarian
Fund



USAID
FROM THE AMERICAN PEOPLE



Humanitarian Aid
And Civil Protection



DISCLAIMER

The opinions expressed in the report are those of the authors and do not necessarily reflect the views of the International Organization for Migration (IOM). The designations employed and the presentation of material throughout the report do not imply the expression of any opinion whatsoever on the part of IOM concerning the legal status of any country, territory, city or area, or its authorities, or concerning its frontiers or boundaries.

IOM is committed to the principle that humane and orderly migration benefits migrants and society. As an Inter-Governmental Organization, IOM acts with its partners in the international community to meet the operational challenges of migration, advance understanding of migration issues, encourage social and economic development through migration and uphold the human dignity and well-being of migrants. The maps included in this report are illustrative. The representations and the use of borders and geographic names may include errors and do not imply a judgment on the legal status of territories nor acknowledgement of borders by the Organization.

“When quoting, paraphrasing, or in any other way using the information mentioned in this report, the source needs to be stated appropriately as follows: “Source: Displacement Tracking Matrix (DTM) of the International Organization for Migration (IOM), February 2024.”

The depiction and use of boundaries, geographic names, and related data shown on this map are not warranted to be error-free, nor do they imply a judgment on the legal status of any territory or any endorsement or acceptance of such boundaries by IOM.

PUBLISHER

IOM: International Organization for Migration (UN Migration Agency)
No 55 Hassan Musa Katsina Road, Asokoro
Abuja – Nigeria (GMT +1)
Tel.: +234 8085221427
Email: iomnigeriadtm@iom.int
Website: <https://dtm.iom.int/nigeria>

Cover photo: © IOM Nigeria 2023/ Elijah ELIAGWU

All rights reserved. No part of this publication may be produced, stored in a retrieval system, or transmitted in any form or by any means, electronic, mechanical, photocopying, recording, or otherwise without the prior written permission of the publisher.

EXECUTIVE SUMMARY

This report, which presents the results from Round 46 of Displacement Tracking Matrix (DTM) assessments carried out by the International Organization for Migration (IOM), aims to improve the understanding of the scope of internal displacement, and return movements and to better understand dynamics and trends of displacement in the conflict-affected region.

north-east Nigeria. The assessment for this atlas took place between July and September 2023 and reflects the number of IDPs from the six states in Nigeria's north-east geopolitical zone. This zone is the most affected by the conflict and consists of the following states: Adamawa, Bauchi, Borno, Gombe, Taraba and Yobe. This report also contains findings on returnees from the master list assessment conducted in Borno, Adamawa and Yobe states which are the most affected states in the north-east zone.

In Round 46, a total of 2,305,335 Internally Displaced Persons (IDPs) were identified in 472,239 households. This signifies a slight increase of less than one per cent (or 9,801 individuals) compared to Round 45 when 2,295,534 IDPs were recorded (June 2023). During Round 46, IDP assessments were conducted in 2,333 locations across the six states of north-east Nigeria. The assessed locations included 273 camps and camp-like settlements and 2,060 locations where internally displaced persons lived among host communities. Furthermore, 2,083,835 returnees were recorded in the Round 46 assessment. This number represents an increase of 8,578 individuals or less than one per cent compared to Round 45 when 2,075,257 returnees were recorded in June 2023.

METHODOLOGY

The IDP and returnee atlas is the product of the DTM Master list assessment which gathers data at site/location level using multiple key informants and direct observations. Interviews are conducted face-to-face by DTM in accessible locations. The atlas provides data on the number of IDPs and returnees at the state, local government area, ward and location levels, their shelter type, the period of displacement, areas of origin for IDPs and areas of last displacement for returnees.

The Master list presents data on the number of individuals and households using either head count, previous registration, official documentation or a demographic calculator based on a sample of assessed IDPs dispersed in host communities, camps or camp-like settings.

POPULATION CATEGORY

The population categories are defined in this report as follows:

- An Internally Displaced Person (IDP) according to DTM definition is 'a person who has been forced to flee or to leave his or her home or place of habitual residence, in particular as a result of, or in order to avoid the effects of armed conflict, situations of generalized violence, violations of human rights or natural or human-made disasters, and who has not crossed an internationally recognized state border.'
- In the context of Nigeria, a returnee is defined by DTM as any former IDP who returned to his or her locality of origin (IDP returnee); or any former refugee who returned to his or her country of origin (returnee from abroad).

LIMITATIONS

- Insecurity remains the major hinderance to DTM assessments in the North-east, limitiing the field teams access to some locations with returnees and IDPs.
- Transportation of many remote and hard-to-reach areas have become more difficult as a result of inflation in the cost of transportation.
- Some enumerators experienced hesitance and reluctance from internally displaced populations to cooperate with the surveys as data is collected regularly and assistance is limited.
- The data used for this analysis were estimates obtained through key informant interviews, direct observation and focus group discussions. Thus, to ensure these estimates' reliability, data collection was performed at the lowest administrative level: the site or the host community.





ESTIMATED NUMBERS OF IDPs AND RETURNEES BY STATE

IOM's Displacement Tracking Matrix (DTM) provides support to the Government and humanitarian partners by establishing a comprehensive system that collects, analyses and disseminates data on IDPs and returnees to ensure timely and effective assistance to the affected populations. Data collection takes place at a granular level and is repeated at regular intervals to ensure accurate and up-to-date information.

As of December 2023, the DTM identified a total of 2,305,335 IDPs in 472,239 households and 2,083,835 returnees in 343,653 households. The IDP population included IDPs in camps and camp-like settings (929,453 individuals or 40%) and IDPs residing in host communities (1,375,882 individuals or 60%). The returnee population included IDP returnees (1,874,283 individuals or 90%) and returnees from abroad (209,552 individuals or 10%).

Estimated number of returnees and IDPs per state

State	IDPs	IDPs (%)	Returnees	Returnees (%)
Adamawa	218,118	9%	858,420	41%
Bauchi	66,489	3%	-	-
Borno	1,711,481	74%	871,017	42%
Gombe	52,383	2%	-	-
Taraba	101,834	4%	-	-
Yobe	155,030	7%	354,398	17%
Total	2,305,335	100%	2,083,835	100%

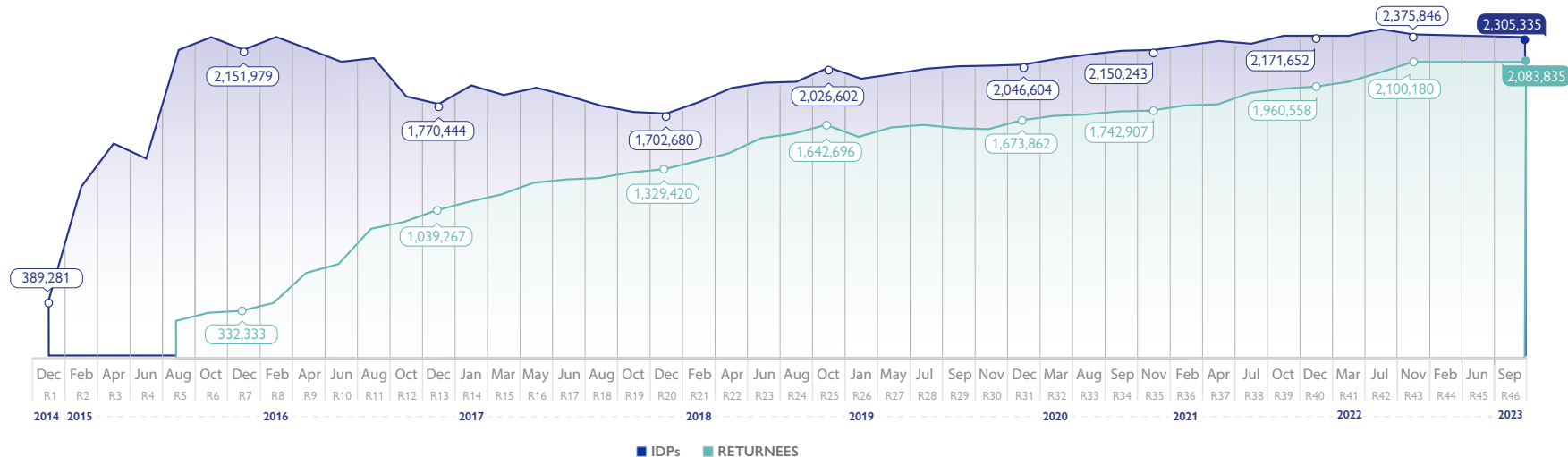


Number of IDPs **2,305,335** (as of December 2023)



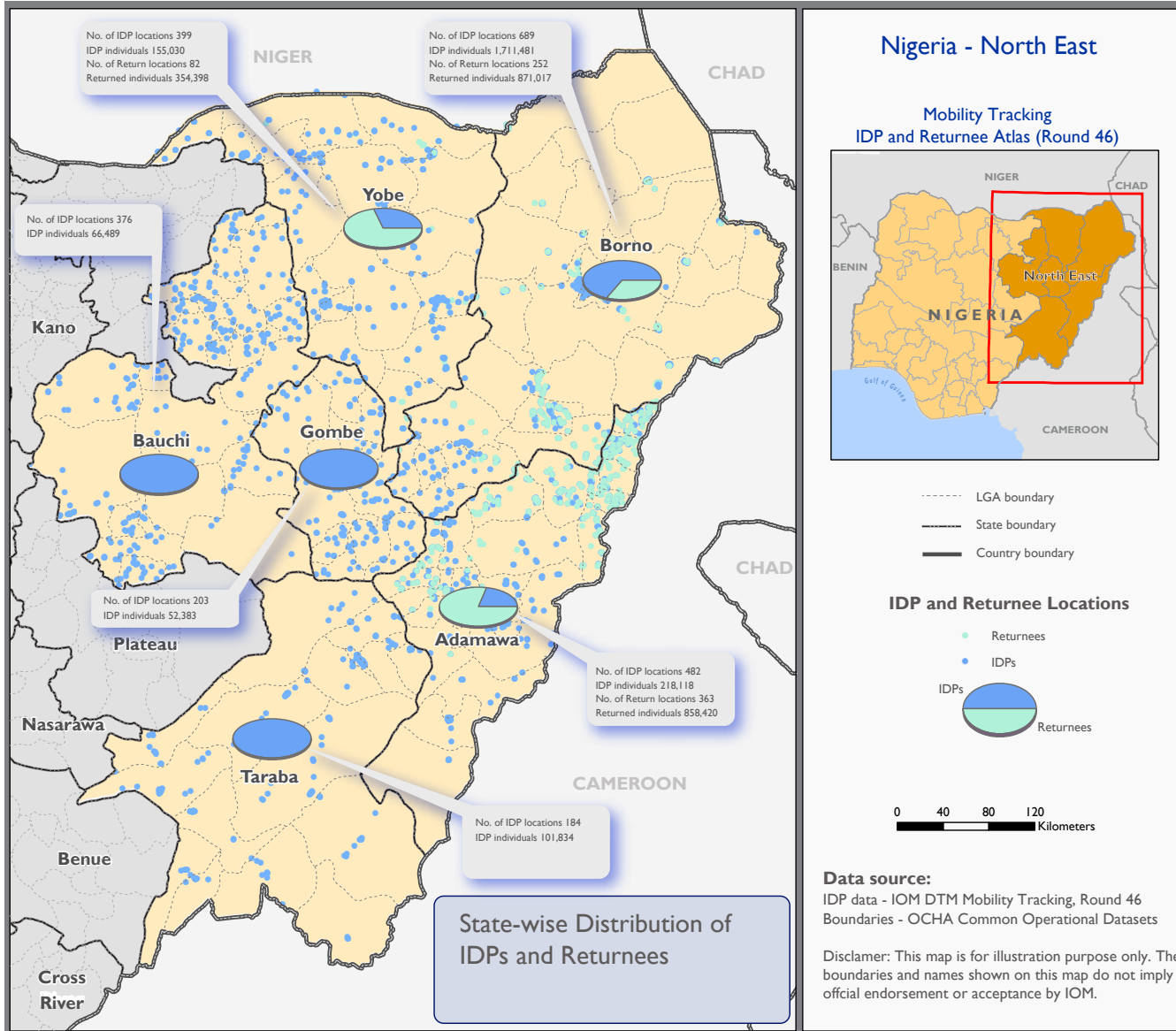
Number of returnees **2,083,835** (as of December 2023)

Number of IDPs and returnees over time

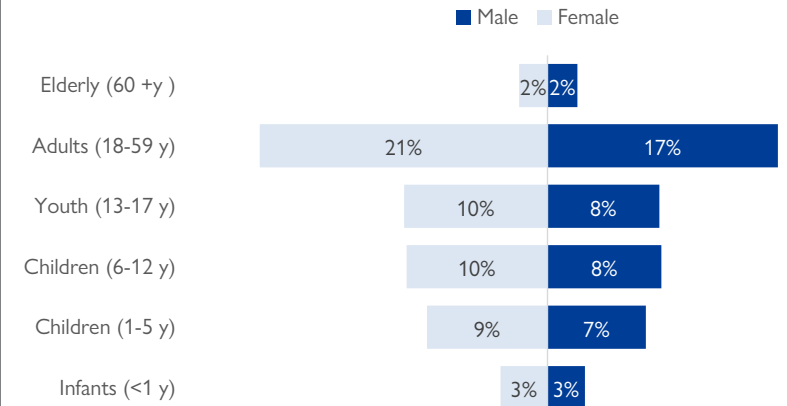


IDPs AND RETURNEES IN NORTH-EAST NIGERIA

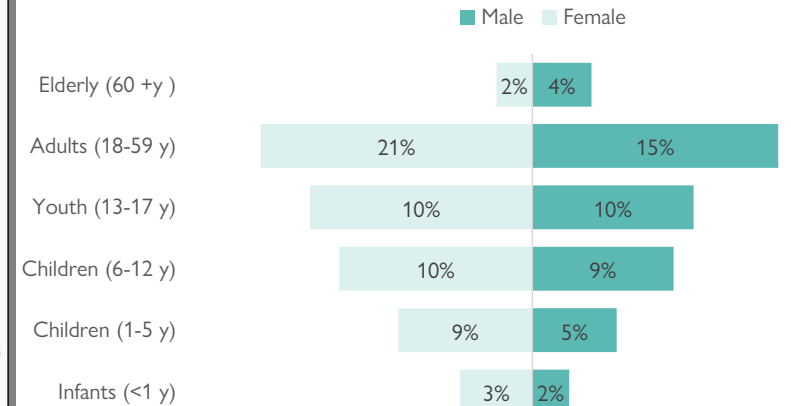
The location map in A0 format can be accessed on page 18



Sex and Age breakdown of IDPs in north-east Nigeria as of December 2023



Sex and Age breakdown of returnees in north-east Nigeria as of December 2023

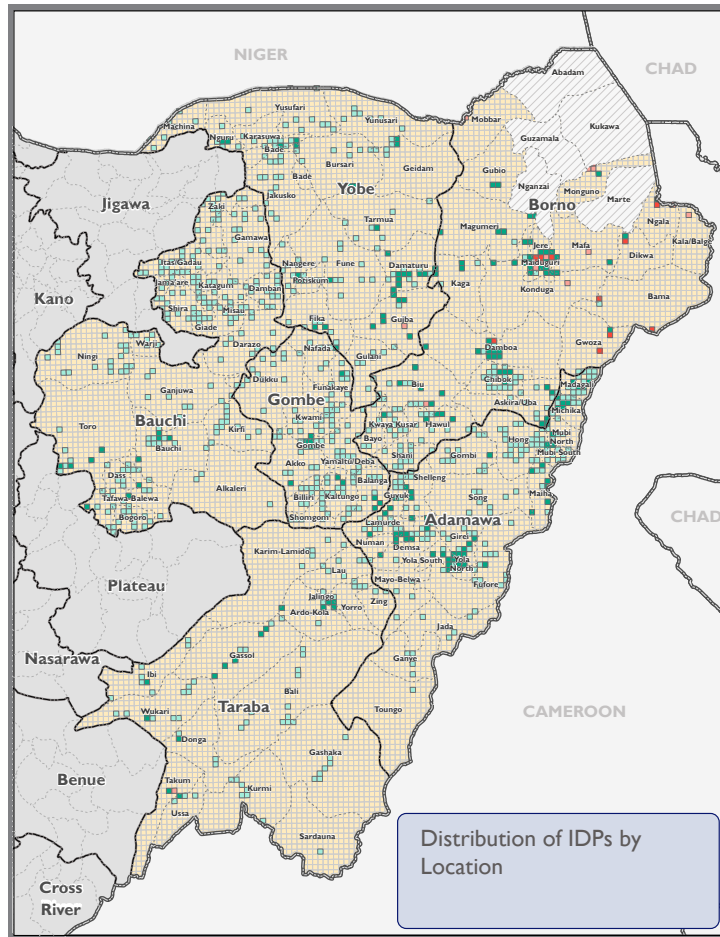




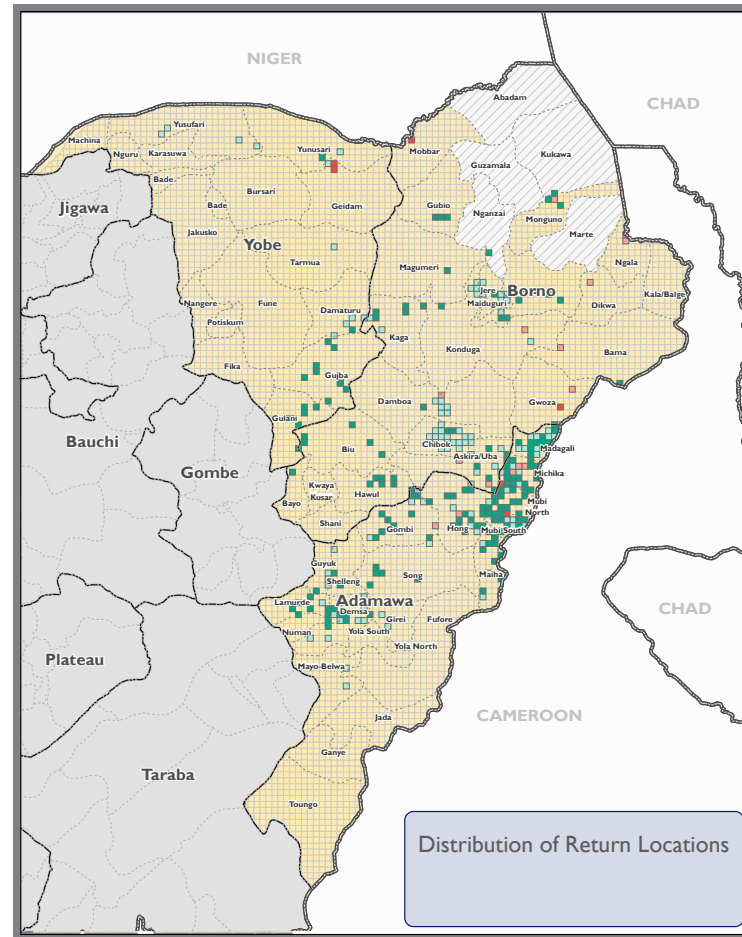
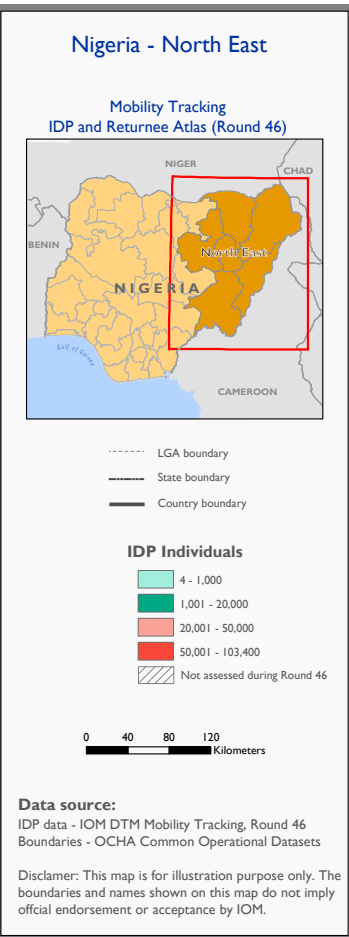
IDP AND RETURNEE LOCATIONS IN NORTH-EAST NIGERIA

IDP locations in north-east Nigeria

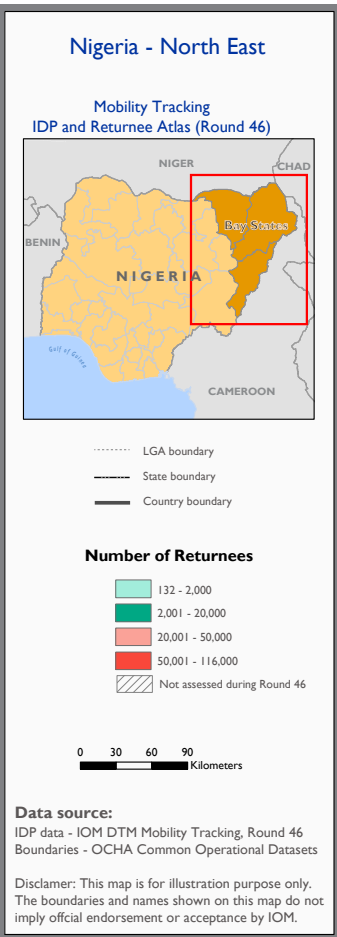
Returnee locations in north-east Nigeria



Distribution of IDPs by Location



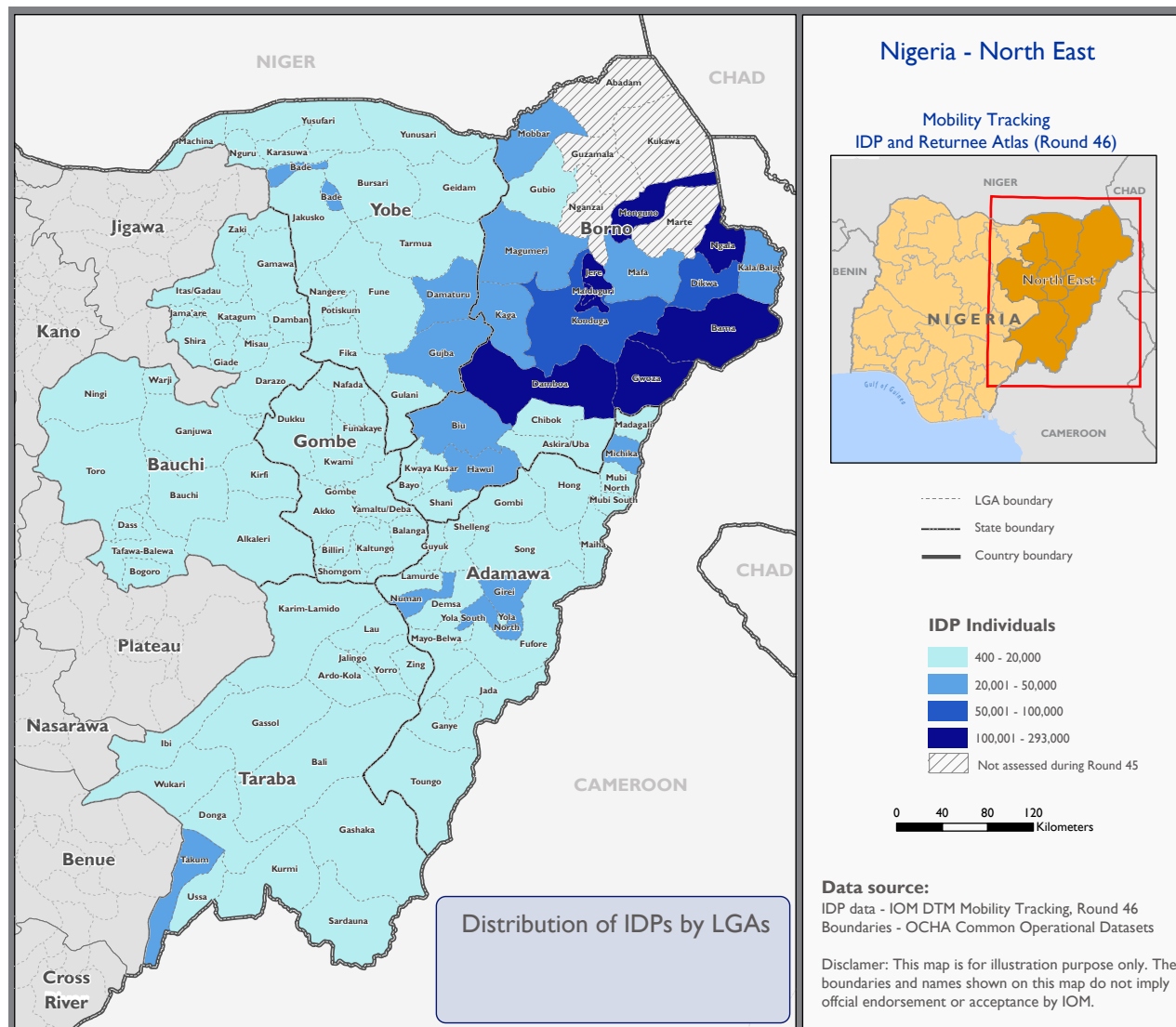
Distribution of Return Locations



The location map in A0 format can be accessed on page 18

IDPs PER LGA AS OF DECEMBER 2023

A total of 2,305,335 IDPs were identified as of December 2023 in north-east Nigeria. The state of Borno hosted the highest number of IDPs with 1,711,481 individuals (74% of IDPs).



Top 10 LGAs hosting the highest numbers of IDPs in north-east Nigeria as of December 2023
 (Accounting for 64% of the IDPs in north-east Nigeria)

State	LGA	IDPs
Borno	Jere	292,556
Borno	Maiduguri	232,482
Borno	Monguno	165,756
Borno	Bama	158,922
Borno	Gwoza	158,351
Borno	Damboa	108,992
Borno	Ngala	105,426
Borno	Dikwa	99,420
Borno	Konduga	93,772
Yobe	Gujba	48,615

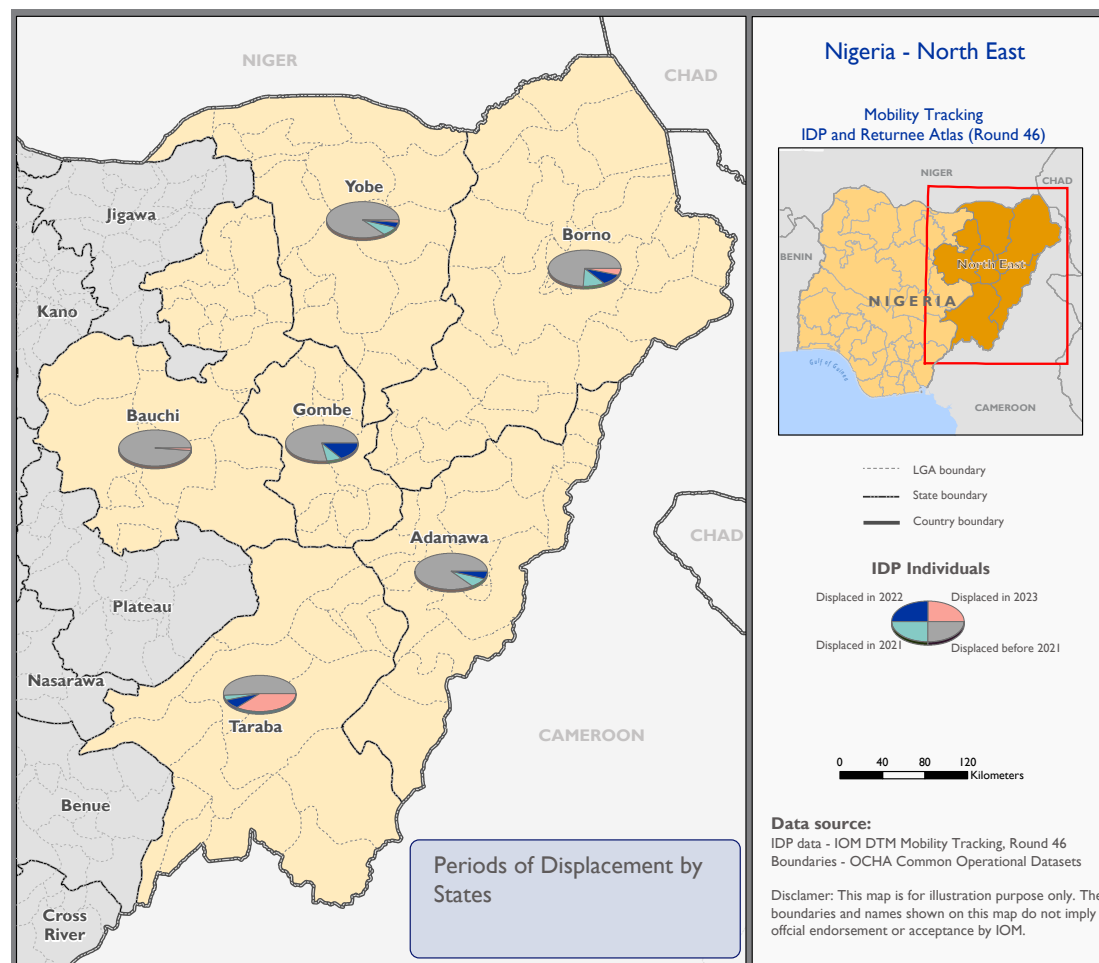
IDPs in camps/camp-like settings vs IDPs dispersed in host communities

State	IDPs in camps / camp-like settings	IDPs in host communities
Adamawa	18,772	199,346
Bauchi	2,175	64,314
Borno	885,940	825,541
Gombe	-	52,383
Taraba	3,213	98,621
Yobe	19,353	135,677
Total	929,453	1,375,882

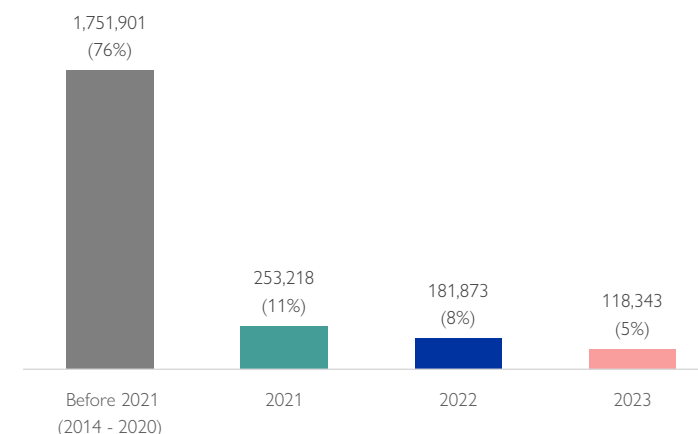
Forty per cent of IDPs in north-east Nigeria are living in camps while 60 per cent of IDPs are dispersed in host communities.

IDPs PER PERIOD OF DISPLACEMENT AT STATE LEVEL

A total of 1,751,901 IDPs or 76 per cent of the total IDP population were displaced before 2021. Nineteen per cent of the IDP population in north-east Nigeria were displaced in the years 2021 and 2022. Meanwhile, 118,343 new displacements (5%) were reported within the first three quarters of the year 2023. Thirty-nine per cent of these new displacements were as a result of communal clashes and farmers - herders conflicts in Ussa LGA of Taraba State, the IDPs were displaced to the neighbouring LGA of Takum in Taraba State.



Total number of IDPs as of December 2023 per periods of displacement

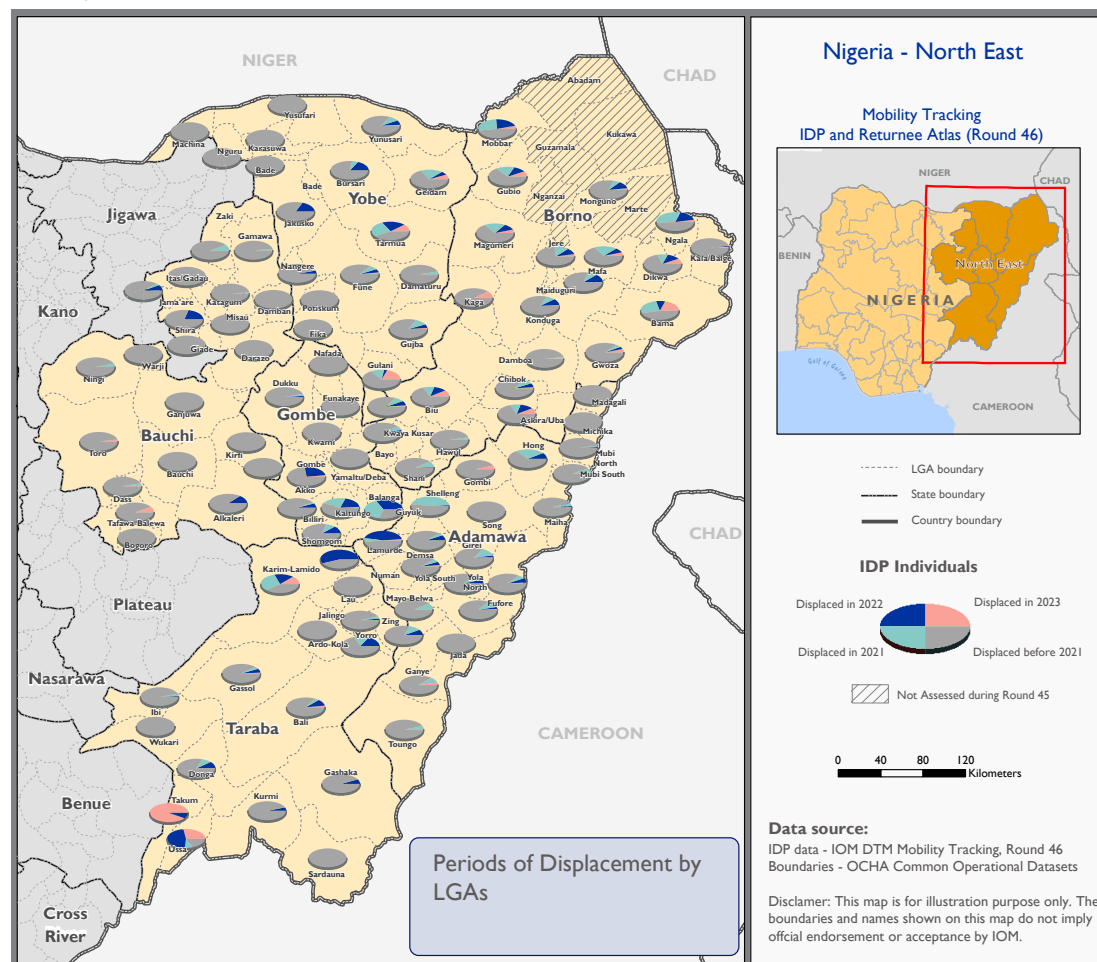


IDPs per periods of displacement at state level

State	Before 2021 (2014 - 2020)	2021	2022	2023
Adamawa	87%	7%	5%	0%
Bauchi	97%	1%	1%	1%
Borno	74%	13%	9%	4%
Gombe	78%	8%	13%	1%
Taraba	51%	3%	7%	39%
Yobe	88%	7%	4%	1%
Total	76%	11%	8%	5%

IDPs PER YEAR OF DISPLACEMENT AT LGA LEVEL

The map below indicates numbers of displaced individuals (as of December 2023). These IDPs are predominantly located around Takum LGA in Taraba State, and in the eastern LGAs of Borno State towards the border with Benue State which is the epicentre of farmers and herders clashes in Nigeria. It is to be noted that 9 out of 10 LGAs accounting for the highest numbers of IDP arrivals in the first three quarters of 2023 are all located in Borno State.



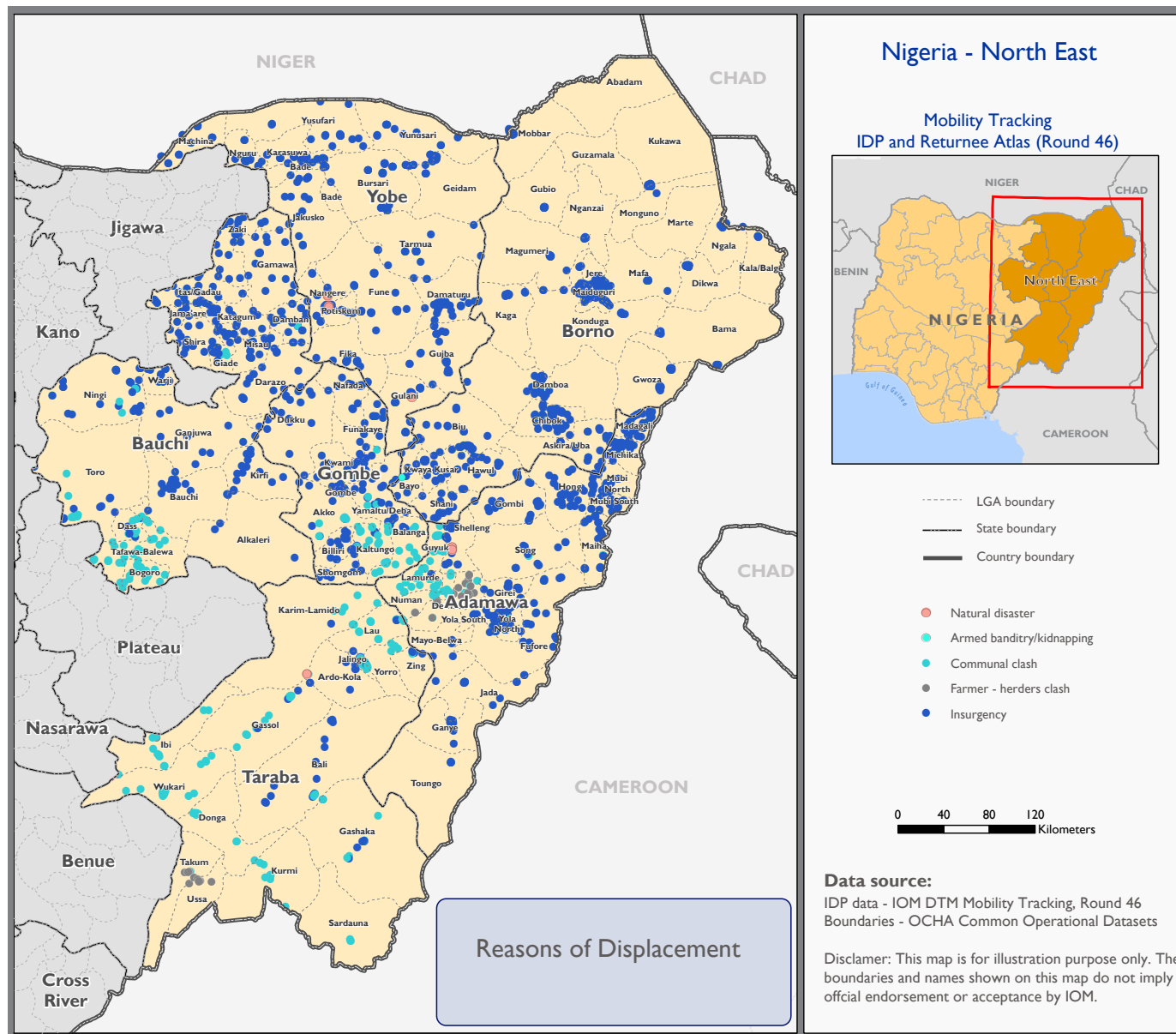
IDPs per periods of displacement in the top 10 LGAs with the highest number of IDPs

State	LGA	Before 2021 (2014 - 2020)	2021	2022	2023
Borno	Bama	47%	24%	10%	19%
Borno	Damboa	97%	1%	1%	1%
Borno	Dikwa	69%	12%	12%	7%
Yobe	Gujba	84%	11%	5%	1%
Borno	Gwoza	88%	5%	3%	4%
Borno	Jere	74%	15%	8%	3%
Borno	Konduga	83%	8%	8%	1%
Borno	Maiduguri	80%	9%	11%	1%
Borno	Monguno	81%	7%	10%	2%
Borno	Ngala	49%	32%	17%	3%

Top 10 LGAs accounting for the highest numbers of IDP arrivals in 2023
 (Accounting for 92% of the IDPs displaced in 2023)

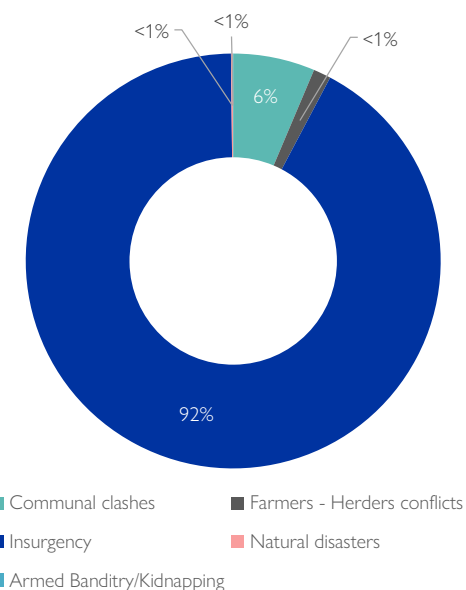
State	LGA	IDPs
Taraba	Takum	38,203
Borno	Bama	30,026
Borno	Jere	8,084
Borno	Dikwa	7,095
Borno	Gwoza	6,910
Borno	Biu	3,488
Borno	Monguno	3,354
Borno	Ngala	2,679
Borno	Kaga	2,115
Borno	Mobbar	1,779

IDPs AND REASONS FOR DISPLACEMENT



Insurgency, involving attacks by non-state armed groups (NSAGs) is widely reported in 92 per cent of the locations as the main driver of displacement in north-east Nigeria. Insurgency was followed by communal clashes (6%), farmers - herders conflicts (<1%), armed banditry/kidnapping (<1%), and natural disasters (<1%). In recent times, the ripple effects of the armed banditry/kidnapping crisis in North-west Nigeria have been observed in the North-east region. This has been cited as the reason for displacement in less than one per cent of the locations assessed in the North-east.

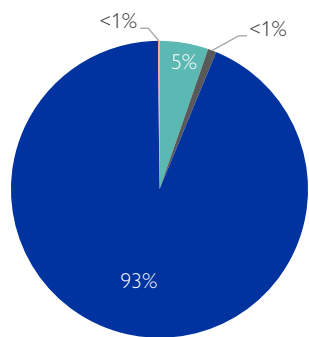
Reasons for displacement (total IDPs)



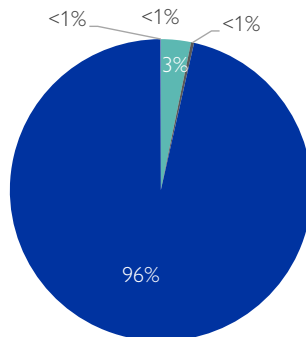
IDPs AND REASONS FOR DISPLACEMENT

The majority of IDPs displaced by the insurgency are located in Bama, Gwoza, Damboa, Jere, Maiduguri M.C., Monguno and Ngala LGAs of Borno State. The IDPs displaced as a result of communal clashes are concentrated in the north-western part of Adamawa State, southern part of Borno State, Taraba State, Gombe State and western Bauchi. While communal clashes accounted for 5 per cent of the displacements before the year 2021, they were cited as the main trigger of displacement by 24 per cent of the IDPs displaced in 2023.

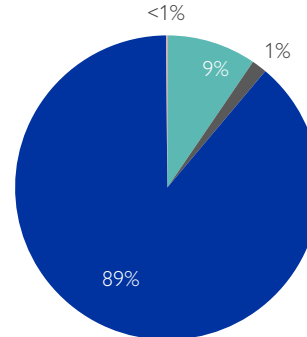
Reasons for displacement (displaced before 2021)



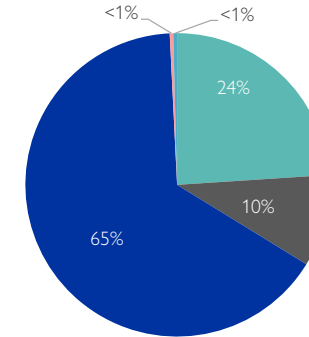
Reasons for displacement (displaced in 2021)



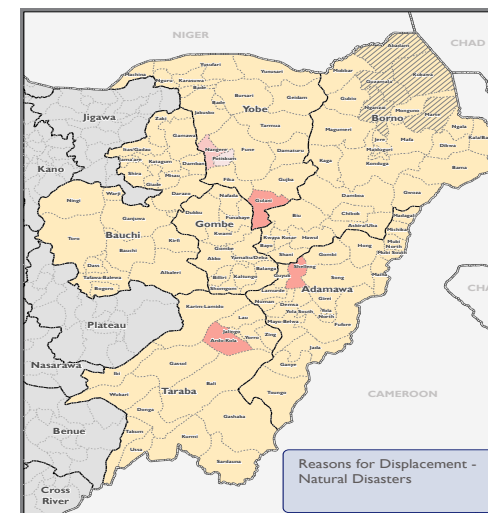
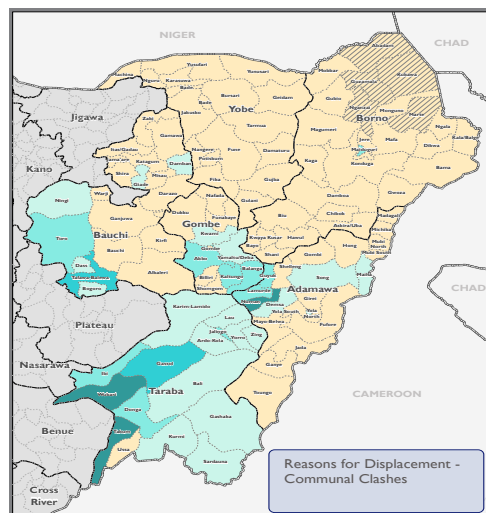
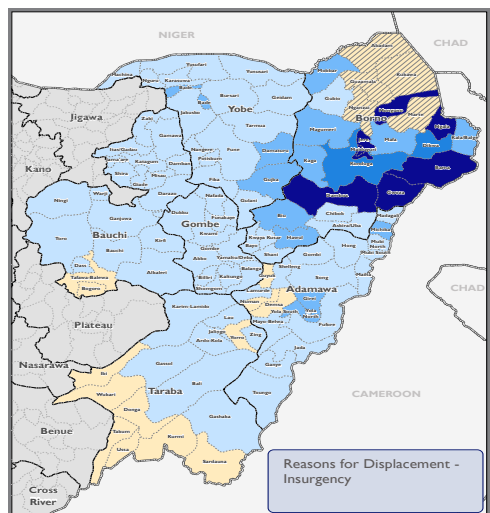
Reasons for displacement (displaced in 2022)



Reasons for displacement (displaced in 2023)

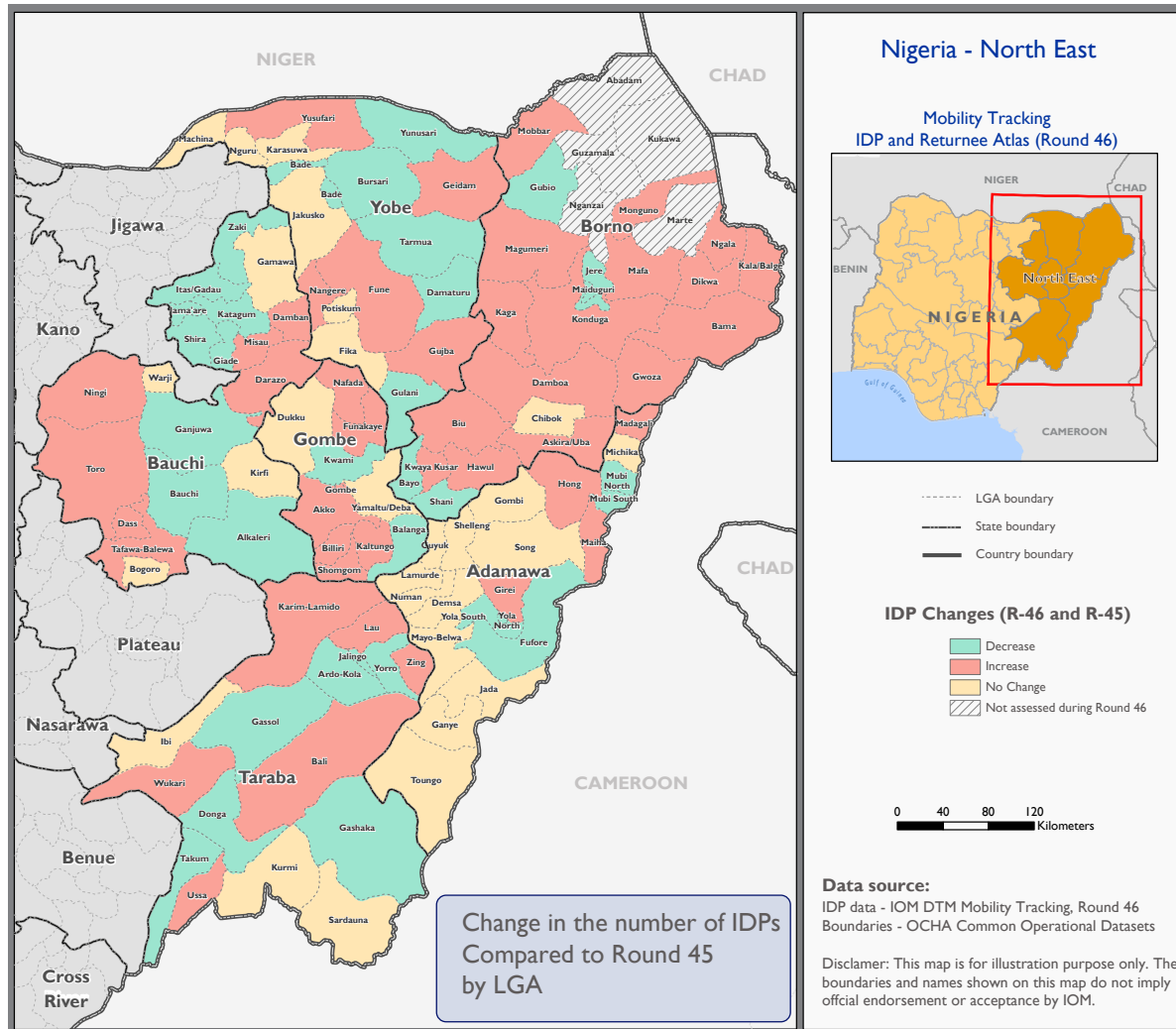


■ Communal clashes
 ■ Farmers - Herders conflicts
 ■ Insurgency
 ■ Natural disasters
 ■ Armed Banditry/Kidnapping

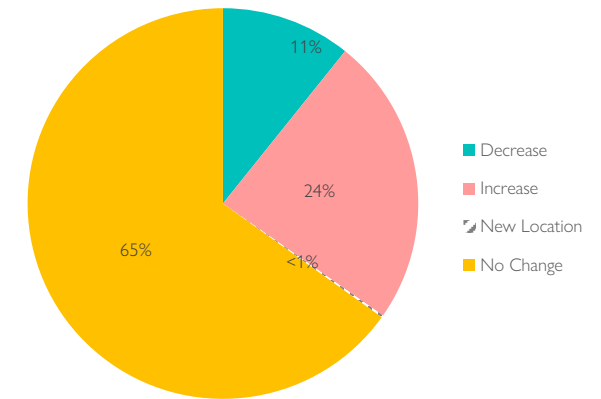


IDP COMPARISON AT LGA LEVEL (JUNE - DECEMBER 2023)

The map below compares IDP population from December 2023 with IDP population from June 2023 at the LGA level. In 44 per cent of the LGAs, the number of IDPs increased while in 28 per cent of the LGAs, the number of IDPs decreased.



Percentage of LGAs and change in IDP population

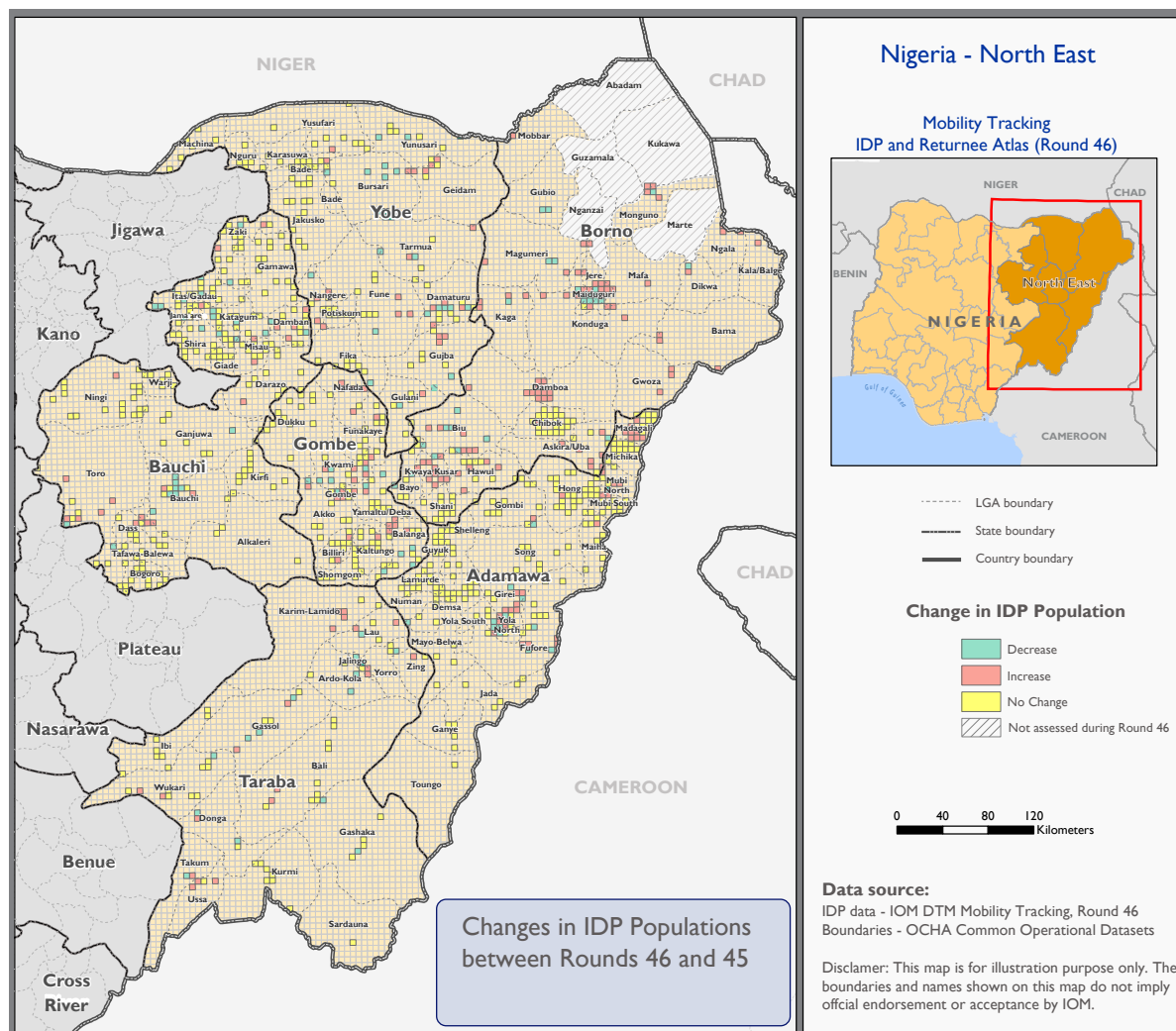


Top LGAs with the highest IDP increase since June 2023

State	LGA	Increase of IDPs
Borno	Bama	5,315
Borno	Dikwa	2,418
Borno	Gwoza	1,934
Borno	Ngala	1,568
Borno	Kaga	1,543
Borno	Mobbar	825
Borno	Damboa	767
Taraba	Takum	764
Borno	Monguno	668
Bauchi	Tafawa Balewa	615

IDP COMPARISON AT LOCATION LEVEL (JUNE - DECEMBER 2023)

The map below compares IDP population from December 2023 with IDP population from June 2023 at the locality level. In 65 per cent of the locations, no changes in IDP population were recorded, while in 24 per cent of the locations, the number of IDPs increased. Additionally, four new IDP locations were identified during the assessment in December 2023.



IDP comparison at state level

State	June 2023	December 2023	Comparison
Adamawa	218,555	218,118	-
Bauchi	65,661	66,489	1%
Borno	1,696,643	1,711,481	1%
Gombe	52,243	52,383	<1%
Taraba	101,564	101,834	<1%
Yobe	155,208	155,030	-
Grand Total	2,289,874	2,305,335	1%

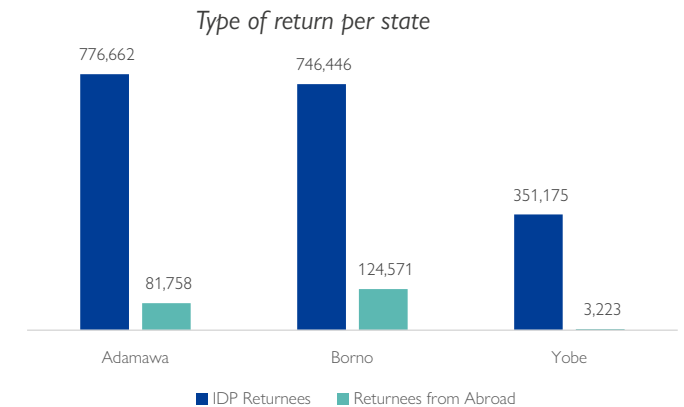
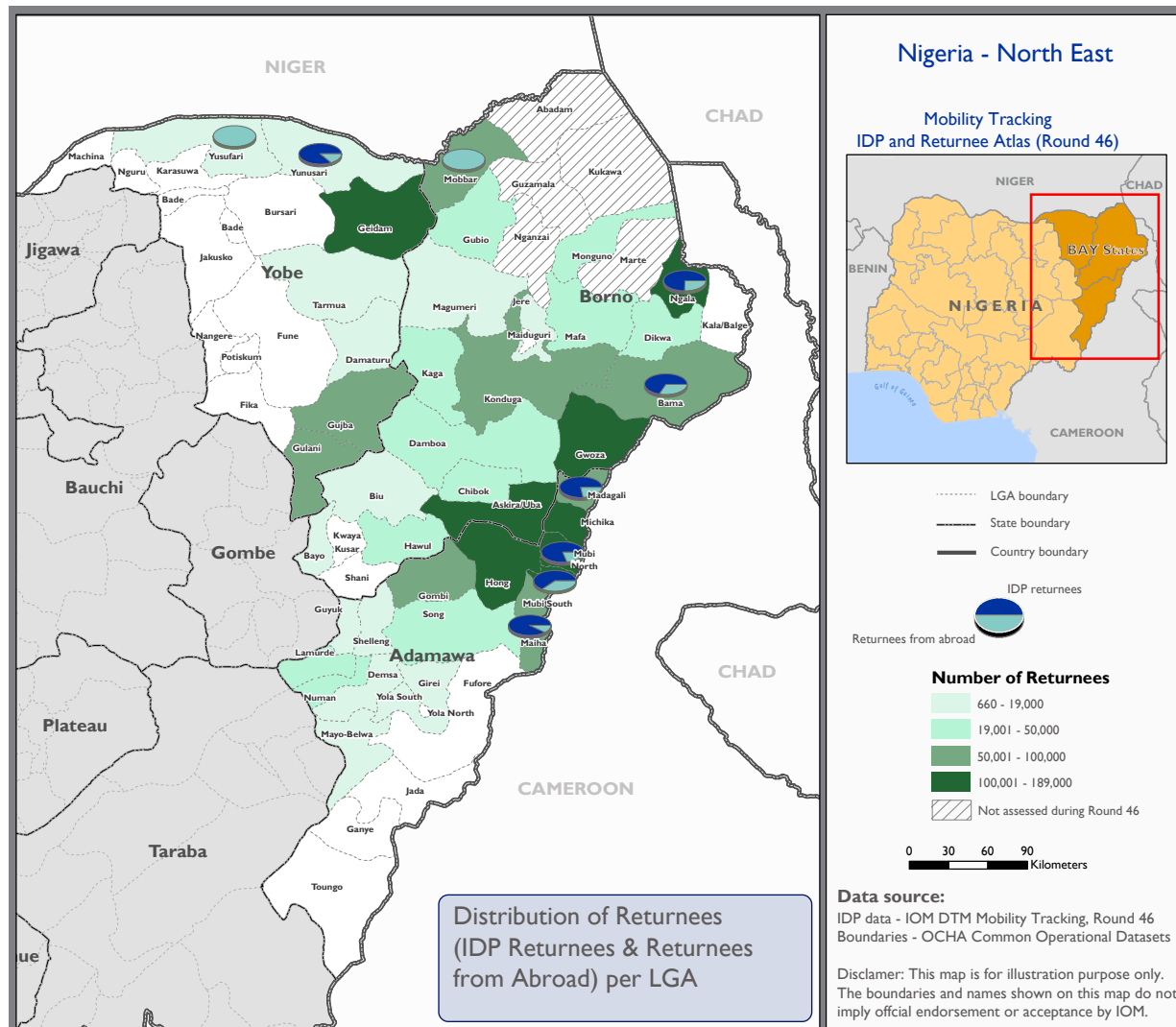
New IDP locations assessed in Round 46

State	LGA	Locality	IDPs
Bauchi	Tafawa Balewa	Junior Secondary School Boto	378
Bauchi	Tafawa Balewa	Waptang Pry School	102
Borno	Kaga	Ngamdu C	1,502
Borno	Kaga	Wassaram	370

For the convenience of the spatial visualisation, locations are aggregated based on a grid in the map

RETURNEES PER LGA AS OF JUNE 2023

A total of 2,083,835 returnees were identified as of December 2023 in north-east Nigeria. The state of Borno hosted the most significant number of returnees with 871,017 individuals (42% of total number of returnees). Adamawa State hosted 858,420 returnees (41% of total number of returnees) and in Yobe State, 354,398 returnees were recorded (17% of total number of returnees).



The returnee population of north-east Nigeria consisted of 1,874,283 returnees (90%) who returned from locations within Nigeria and 209,552 returnees (10%) who returned from abroad.

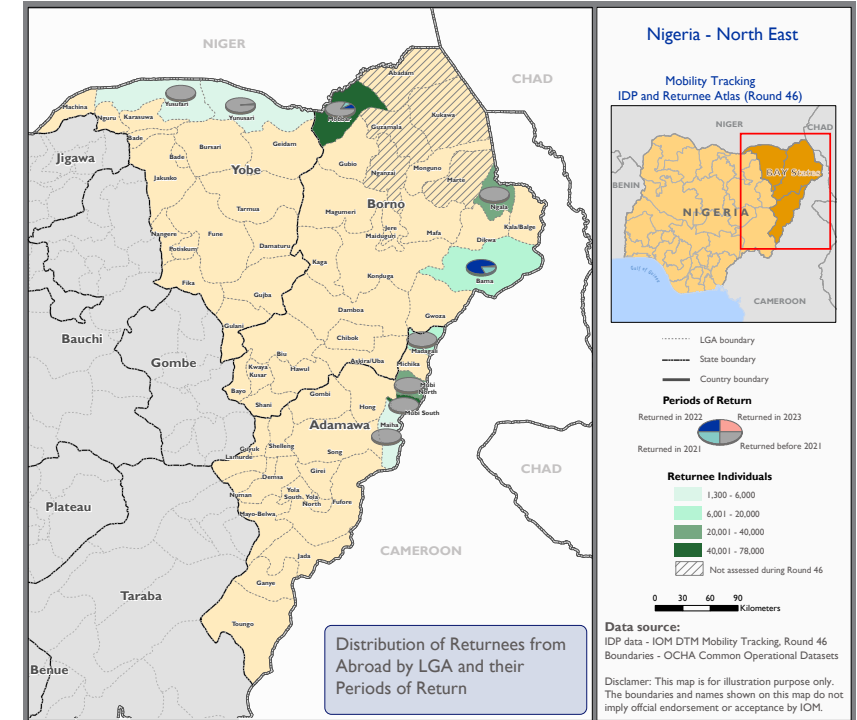
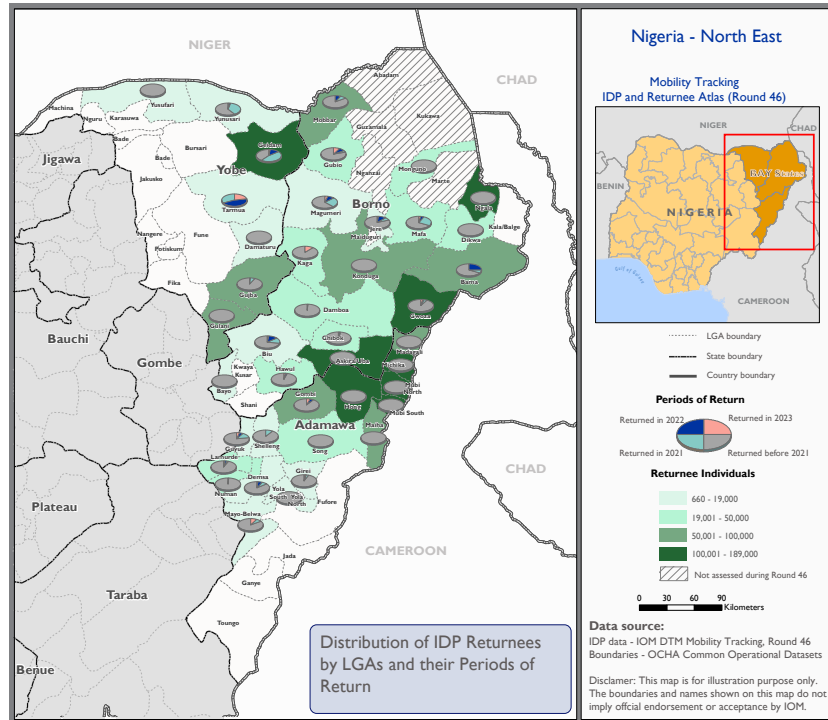
Top 10 LGAs hosting the highest number of returnees

State	LGA	Returnees
Yobe	Geidam	188,107
Borno	Ngala	113,311
Borno	Gwoza	101,029
Yobe	Gulani	81,183
Adamawa	Gombi	78,110
Borno	Bama	58,743
Borno	Monguno	49,682
Borno	Kaga	41,613
Borno	Gubio	26,418
Borno	Mafa	19,510

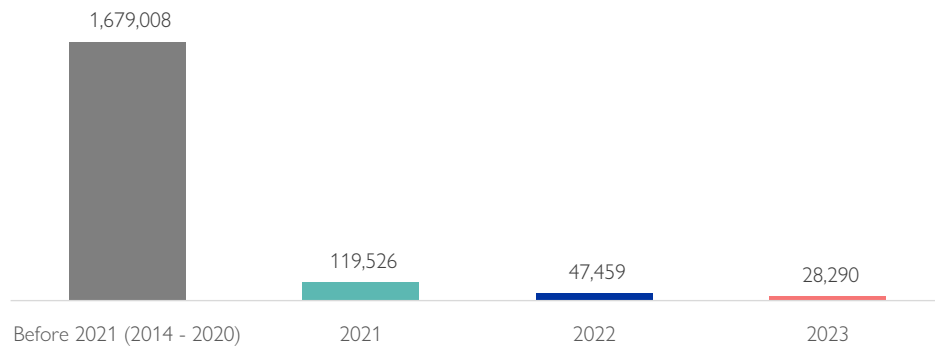
IDP RETURNEES VS. RETURNEES FROM ABROAD

IDP returnees (December 2023)

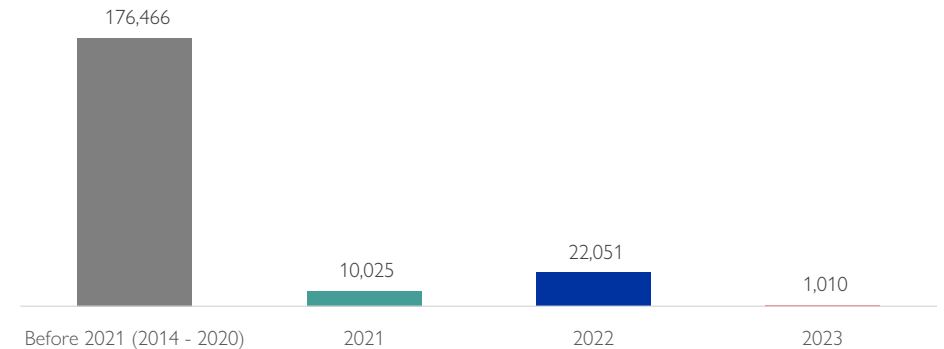
Returnees from abroad (December 2023)



IDP returnees per periods of return as of December 2023

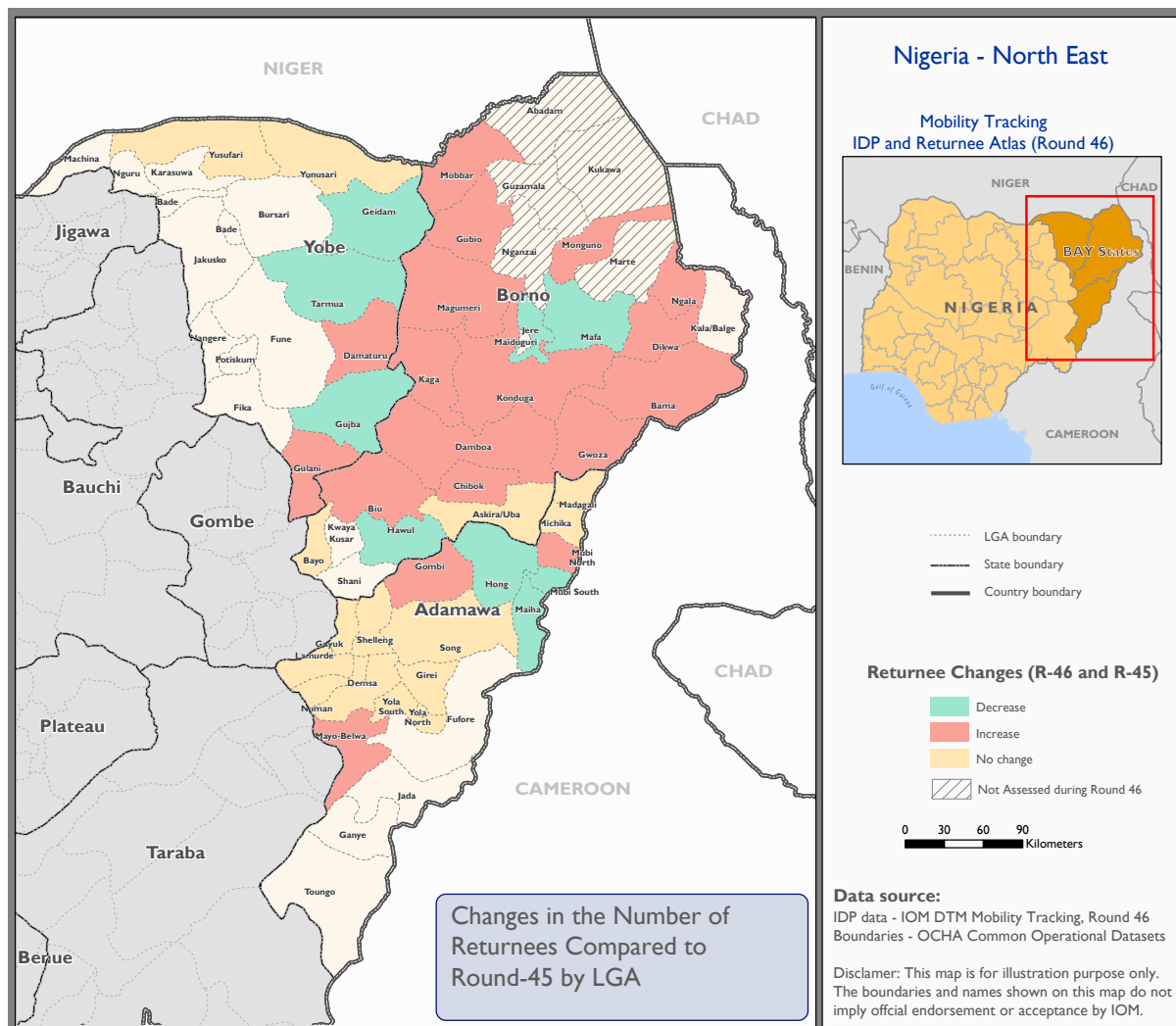


Returnees from abroad per periods of return as of December 2023



RETURNEE COMPARISON AT LGA LEVEL (JUNE - DECEMBER 2023)

The map below compares returnee population from June 2023 with returnee population from December 2023 at the LGA level. In the majority of the LGAs, increasing returnee numbers were reported. Ten LGAs (Dikwa, Gombi, Gulani, Guyuk, Gwoza, Hong, Lamurde, Mafa, Mubi South and Ngala) recorded decreasing returnee population in this round of assessment.



LGAs with the largest increase of returnee individuals

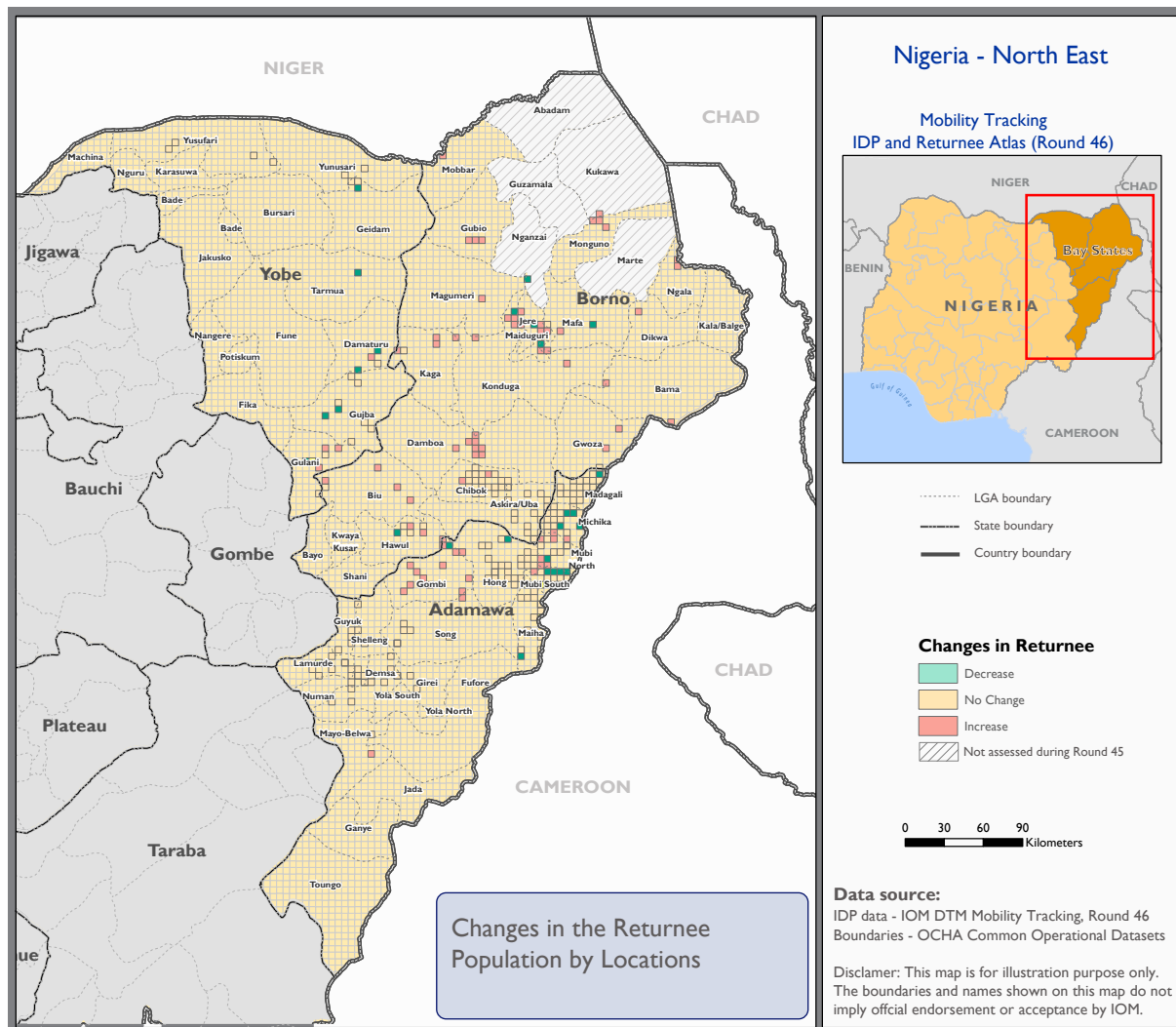
State	LGA	Returnee increase
Adamawa	Gombi	4,109
Borno	Gwoza	2,677
Adamawa	Lamurde	654
Adamawa	Guyuk	546
Borno	Mafa	516
Adamawa	Mubi South	404
Adamawa	Hong	393
Yobe	Gulani	376
Borno	Dikwa	372
Borno	Ngala	344

Returnee comparison at state level

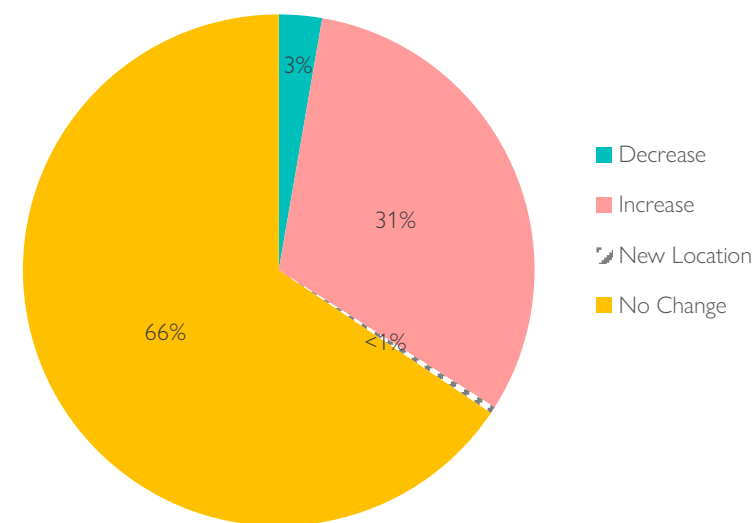
State	February 2023	June 2023	Comparison
Adamawa	850,535	857,378	1%
Borno	904,185	861,756	-5%
Yobe	355,319	356,123	<1%
Total	2,110,039	2,075,257	-2%

RETURNEE COMPARISON AT LOCATION LEVEL (JUNE - DECEMBER 2023)

The map below compares returnee population from June 2023 with returnee population from December 2023 at the locality level. In 66 per cent of the return locations, no changes in returnee population was recorded. In 31 per cent of the return locations, the returnee population increased. Additionally, three new IDP locations were identified during the assessment in December 2023.



Percentage of locations and change in returnee numbers



New returnee locations assessed in Round 46

State	LGA	Locality	Returnees
Borno	Kaga	Ngamdu C	4,700
Borno	Kaga	Wassaram	1,010
Borno	Konduga	Bokoiri	375