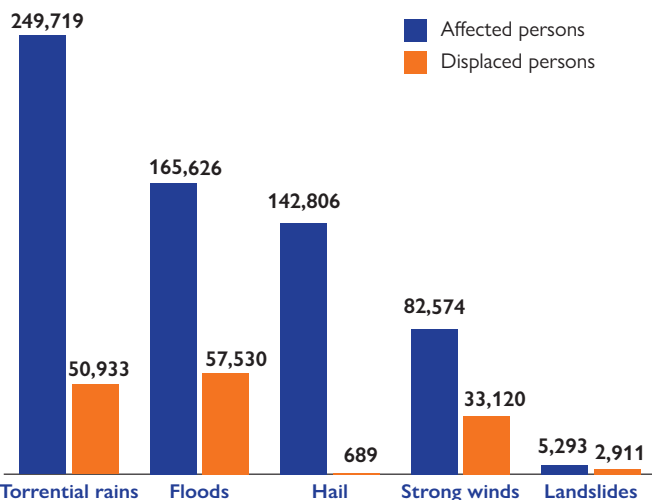


755 Disasters

were tracked by DTM emergency teams

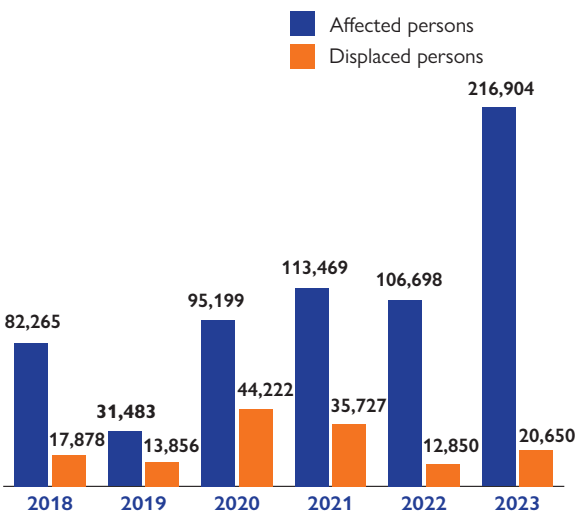
Affected and displaced persons by main types of disasters



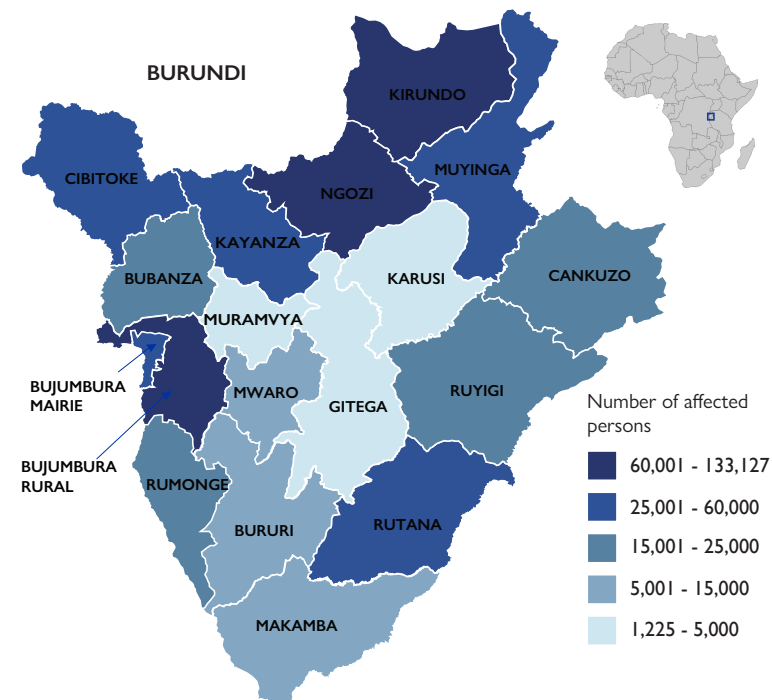
646,018 affected persons

145,183 displaced persons*

Affected and displaced persons by period

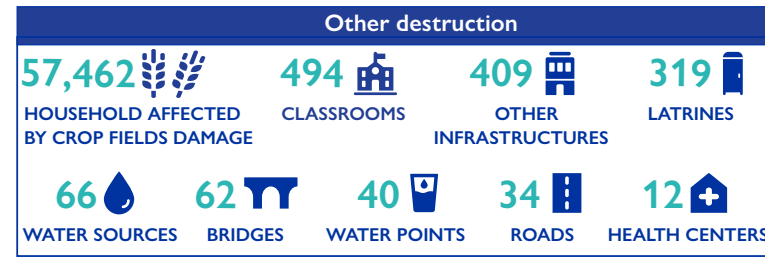
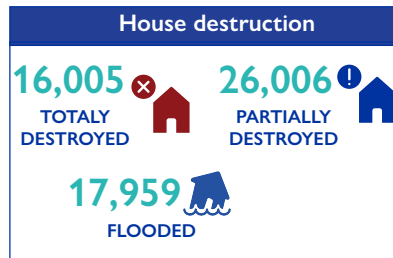
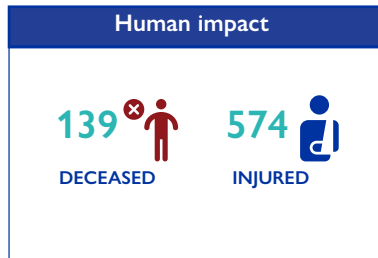
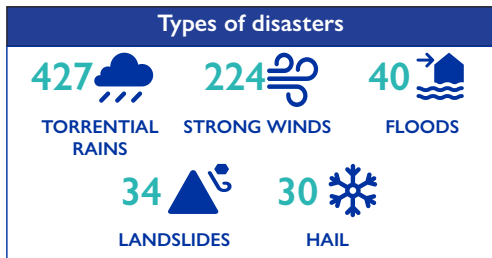


Disasters affected population by province



Since 2018, climate change and disasters, in particular torrential rains, floods and strong winds that occurred in Burundi affected 646,018 persons including 145,183 individuals that have been displaced. During this period, the main affected provinces were Bujumbura Rural (133,127 affected persons), Ngozi (113,686 affected persons) and Kirundo (107,377 affected persons). Alongside the severe human impact, these disasters destroyed many houses, infrastructures and crop fields in the country.

© IOM Burundi - Reference map (December 2023)



METHODOLOGY

The Emergency Event Tracking (EET) tool aims to collect information on large and sudden population movements. Information is collected by enumerators (Red Cross volunteers) through Key Informant Interviews (KII) and direct observation. Two enumerators per commune are in charge of emergency surveillance and report any emergency events that occurred within 24 hours to the supervisor. After verification, the emergency events are shared with partners through the Whatsapp group (to inform partners on time for any emergency assistance). Every monday, a weekly dashboard is compiled and published regarding the emergency events which took place from Sunday to Saturday of the previous week (only severe events are published). These dashboards may be found at <https://dtm.iom.int/burundi>. This overview provides information on climate change and disasters which occurred from January 2018 to December 2023.

*This figure is an accumulation of the number of spontaneous displacements after each emergency event since 2018. The current number of internally displaced persons in Burundi was estimated at 73,931 in July 2023.

<https://dtm.iom.int/reports/burundi-displacement-dashboard-july-2023?close=true>