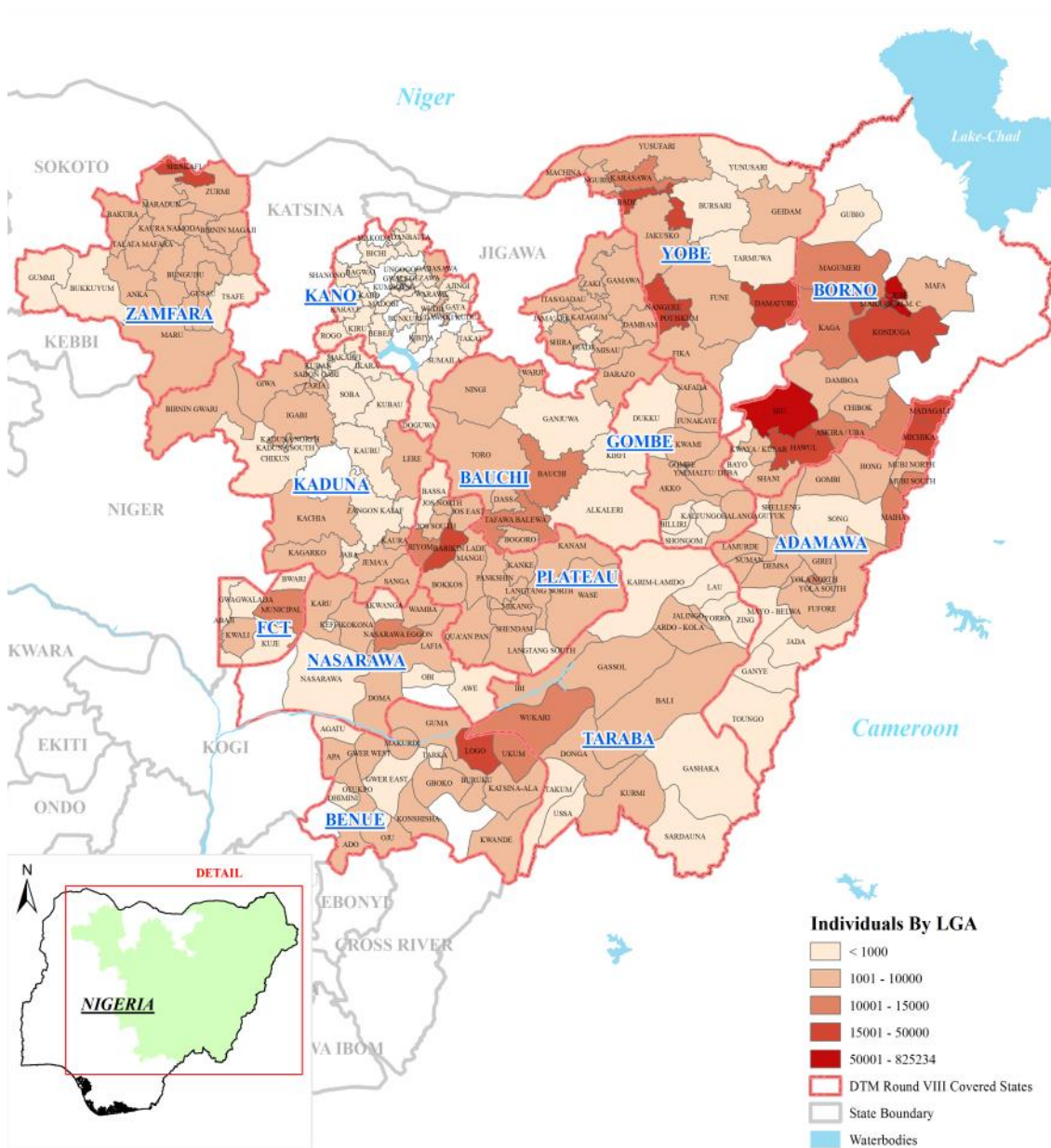


## DISPLACEMENT HIGHLIGHTS

- ➔ **2,241,484** individuals (334,608 households) were identified in Adamawa, Bauchi, Benue, Borno, Gombe, Taraba, Yobe, Nasarawa, Plateau, Kaduna, Kano, Zamfara, states and Abuja.
- ➔ In total, **1,920,471** IDPs captured through the DTM assessments have been displaced by the insurgency (85.70% of the total IDP population).
- ➔ Majority of the IDPs are identified in Borno (1,525,404) followed by Yobe (139,550) and Adamawa (132,626).

Number of IDPs by LGA



- ◆ 54.53% of the IDP population are children and 26.01% are five(5) years old or younger.
- ◆ 92% of IDPs live in host communities while 8% live in camps.
- ◆ 84 Camps and camp-like sites have been identified through the DTM assessments.



## INTRODUCTION

The Boko Haram insurgency has resulted in the displacement of people across Northeast and North-central Nigeria adding to the pre-existing caseload of IDPs displaced by the communal clashes and natural disasters that continue to affect parts of the country.

Following the escalation of the insurgency in 2014 and in order to respond to the needs for accurate information on displacement, IOM started the Displacement Tracking Matrix (DTM) program in close collaboration with the National Emergency Management Agency (NEMA). The main objective of the program is to support the Nigerian Government and partners in the field to conduct IDPs assessments in a systematic way, as well as to establish a profile of the IDP population.

The DTM assessments are carried out in 13 states (Abuja, Adamawa, Bauchi, Benue, Borno, Gombe, Kaduna, Kano, Nasarawa, Plateau, Taraba, Yobe and Zamfara) and cover a total of 218 Local Governmental Areas (LGAs) and 1,350 wards where IDPs had been identified. While DTM data collectors have full or partial access to all LGAs in the states mentioned above, only 15 out of the 27 LGAs in Borno State are currently accessible: Askira Uba, Bayo, Biu, Chibok, Damboa, Gubio, Hawul, Jere, Kaga, Konduga, Kwaya Kusar, Mafa, Magumeri, Maiduguri and Shani.

The DTM teams are composed of representatives of the National Emergency Management Agency (NEMA), State Emergency Management Agencies (SEMAs), the Nigerian Red Cross and IOM. The assessment included the collection of baseline information at LGAs and ward level and detailed surveys in camps and camp-like sites.

The DTM program is funded by the United States Agency for International Development (USAID) and the European Commission's Humanitarian Aid and Civil Protection department (ECHO).

The National Emergency Management Agency (NEMA) is also providing financial support to the program.

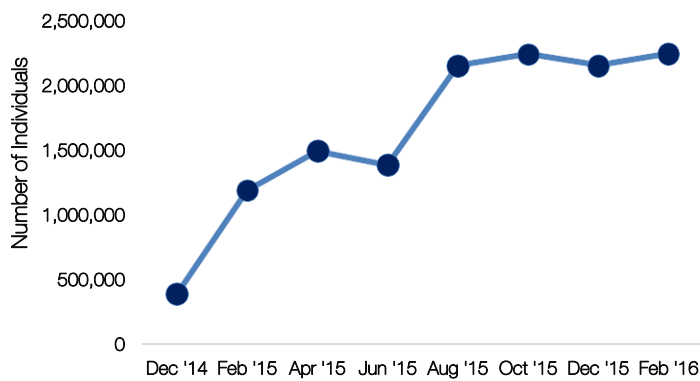
## 1 POPULATION PROFILE

### 1A: LOCATION OF DISPLACEMENT

The total number of IDPs identified in Abuja, Adamawa, Bauchi, Benue, Borno, Gombe, Kaduna, Kano, Nasarawa, Plateau, Taraba, Yobe and Zamfara as of 29 February 2016 is **2,241,484 IDPs** (334,608 households). In total 1,920,471 IDPs have been displaced by the insurgency mainly in Borno, Yobe and Adamawa states.

| Current Location | IDP Individuals | IDP Households | Average HHs size |
|------------------|-----------------|----------------|------------------|
| ABUJA            | 15,154          | 2,510          | 6                |
| ADAMAWA          | 132,626         | 19,636         | 6,7              |
| BAUCHI           | 65,365          | 10,442         | 6,3              |
| BENUE            | 85,850          | 11,150         | 7,7              |
| BORNO            | 1,525,404       | 210,293        | 7,2              |
| GOMBE            | 26,233          | 4,752          | 5,5              |
| KADUNA           | 40,688          | 5,687          | 7,1              |
| KANO             | 11,853          | 2,315          | 5,1              |
| NASARAWA         | 37,953          | 6,701          | 5,7              |
| PLATEAU          | 68,365          | 12,226         | 5,6              |
| TARABA           | 45,587          | 8,310          | 5,5              |
| YOBE             | 139,550         | 31,908         | 4,4              |
| ZAMFARA          | 46,856          | 8,678          | 5,4              |
| Total            | 2,241, 484      | 334,608        | 6,7              |

*Table 1: Total IDP population by current location (State);*



*Graph 1: Number of IDPs-December 2014/February 2016*

The slight increase in the number of IDPs compared to the last round of assessment (2,151,979 IDPs)<sup>1</sup> is mainly due the identification of new IDPs in Borno state. In addition to the relocation movements organized over the past months from Adamawa to Borno, the attacks that continued to be carried-out in some areas of Borno and the returns from neighboring countries have led to an increase in the number of IDPs identified in Maiduguri, the capital of the State.

In Borno, Maiduguri LGA is hosting the highest number of IDPs (825,234), while most IDPs in Yobe and Adamawa were found respectively in Damaturu (38,086) and Michika (34,712) LGAs.

| S/N | State   | LGA             | Households | Individuals |
|-----|---------|-----------------|------------|-------------|
| 1   | BORNO   | MAIDUGURI M. C. | 112,868    | 825,234     |
| 2   | BORNO   | JERE            | 65,909     | 489,205     |
| 3   | BORNO   | BIU             | 6,987      | 53,172      |
| 4   | BORNO   | HAWUL           | 6,861      | 47,732      |
| 5   | BORNO   | KONDUGA         | 6,734      | 46,046      |
| 6   | YOBE    | DAMATURU        | 13,540     | 38,086      |
| 7   | ADAMAWA | MICHIKA         | 5,132      | 34,712      |
| 8   | YOBE    | POTISKUM        | 4,319      | 26,080      |
| 9   | ADAMAWA | MADAGALI        | 3,276      | 19,656      |
| 10  | YOBE    | BADE            | 2,370      | 17,998      |

*Table 3: LGAs with the highest concentration of IDPs in the North East*

## 1B: DEMOGRAPHIC DATA

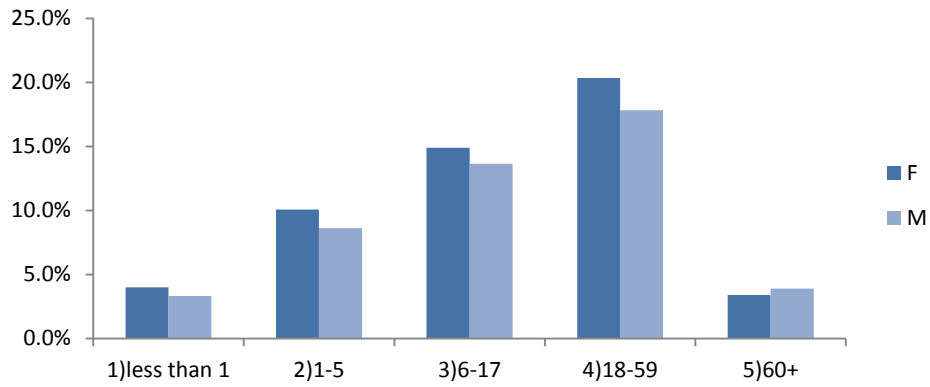
The demographic profile of the IDP population is the result of a sample survey conducted on 20 households in each of the wards assessed by the DTM team. In total, 22,460 households were interviewed to obtain a detailed age and sex breakdown. This sample represents 7% of the identified IDP population.

After extrapolation, the results show that 53% of the IDP population are female and 47 % are male. Children of age less than 18 constitute 55% of the IDP population and approximately half of them are up to five years old.

| Round | Months of release | Number of IDPs | States covered  |
|-------|-------------------|----------------|---|
| I     | December 14       | 389,281        | Adamawa, Bauchi, Gombe, Taraba and Yobe   |
| II    | February 15       | 1,188,018      | Adamawa, Bauchi, <b>Borno</b> , Gombe, Taraba and Yobe  |
| III   | April 15          | 1,491,706      | Adamawa, Bauchi, Borno, Gombe, Taraba and Yobe  |
| IV    | June 15           | 1,385,298      | Adamawa, Bauchi, Borno, Gombe, Taraba and Yobe  |
| V     | August 15         | 2,150,451      | <b>Abuja</b> , Adamawa, Bauchi, Borno, Gombe, <b>Nasarawa</b> , Taraba and Yobe   |
| VI    | October 15        | 2,239,749      | <b>Abuja</b> , Adamawa, Bauchi, Borno, Gombe, <b>Kaduna</b> , <b>Nasarawa</b> , <b>Plateau</b> , Taraba and Yobe                |
| VII   | December 15       | 2,151,979      | Abuja, Adamawa, Bauchi, <b>Benue</b> , Borno, Gombe, Kaduna, <b>Kano</b> , Nasarawa, Plateau, Taraba, Yobe and <b>Zamfara</b> . |
| VIII  | February 16       | 2,241,484      | Abuja, Adamawa, Bauchi, Benue, Borno, Gombe, Kaduna, Kano, Nasarawa, Plateau, Taraba Yobe and Zamfara.                          |

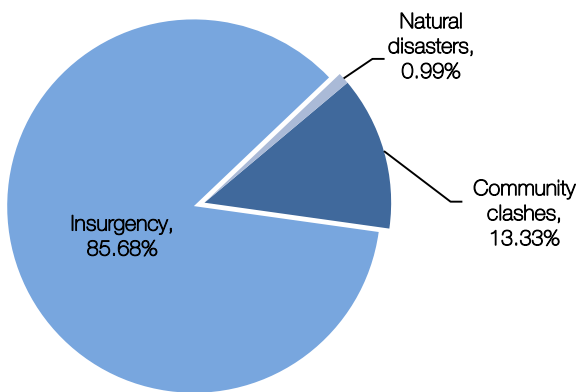
*Table 2: Total IDP population per round and state covered*

<sup>1</sup> DTM report, December 2015

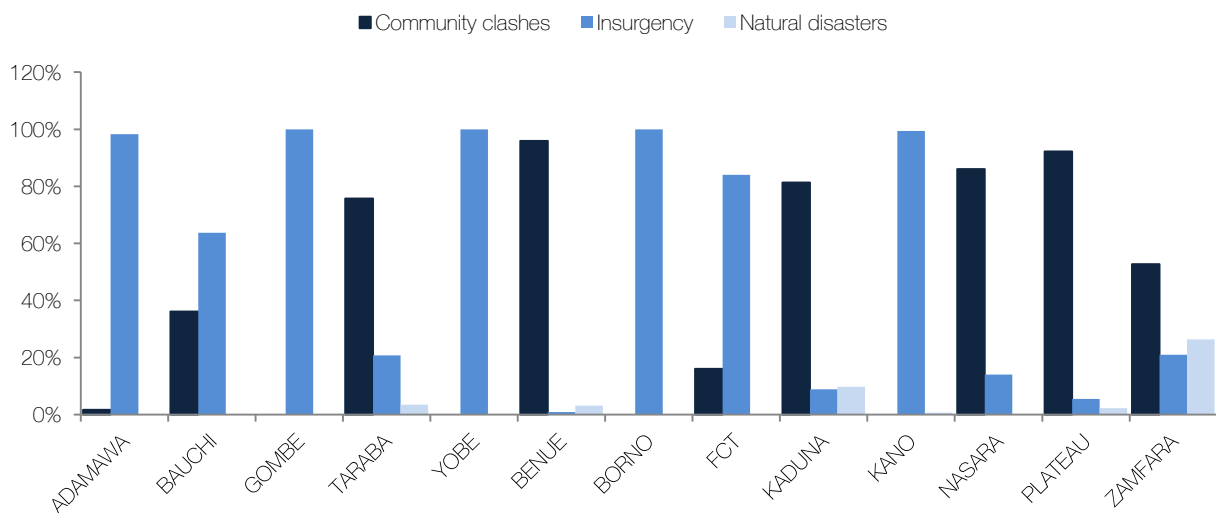


Graph 2: IDP Population by major age group and sex breakdown

1C: REASONS OF DISPLACEMENT



Most IDPs identified through the DTM assessments were displaced because of the insurgency. This is especially the case in the North-Eastern region, where the majority of IDPs in Adamawa, Bauchi, Borno, Gombe and Yobe were displaced due to the conflict (1,863,168 IDPs). Whereas all the IDPs identified in Borno, Gombe and Yobe have been displaced because of the insurgency, this percentage reaches 98% in Adamawa and 64% in Bauchi. In Taraba, 76% of IDPs were forced to leave their homes because of community clashes. Land and religious conflicts are also the main reasons for displacement in Benue (96%), Kaduna (81%), Nasarawa (86%), Plateau (92%) and Zamfara (53%). In Abuja, most IDPs were displaced because of the insurgency (84%).



Graph 3: Total IDP Population by current location (State) and reason for displacement;

## 1D: YEARS OF DISPLACEMENT

The majority of IDPs identified during this assessment were displaced in 2014 (58%) and 2015 (36%).

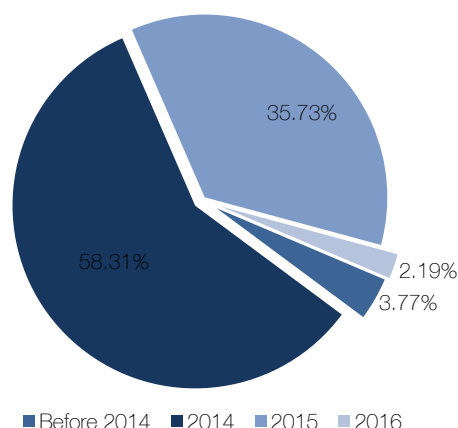


Chart 2: IDP population by year of displacement

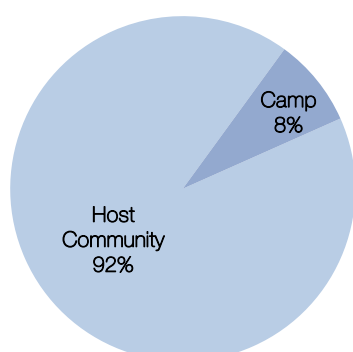
## 1E: ORIGIN OF THE DISPLACED POPULATION

Regarding the origin of the displaced population, 75% of the IDPs identified during this round of assessment come from Borno, followed by Yobe (5,2%) and Adamawa (4,9%). In Abuja, Bauchi, Borno, Gombe, and Kano, the majority of IDPs identified are from Borno states. In Kaduna, Kano, Nasarawa, Plateau, Yobe and Zamfara, most IDPs are from the same state.

|                 |          | Current Location |        |        |        |        |        |        |        |          |         |        |        |         |
|-----------------|----------|------------------|--------|--------|--------|--------|--------|--------|--------|----------|---------|--------|--------|---------|
|                 |          | ADAMAWA          | BAUCHI | BENUE  | BORNO  | FCT    | GOMBE  | KADUNA | KANO   | NASARAWA | PLATEAU | TARABA | YOBE   | ZAMFARA |
| State of Origin | ADAMAWA  | 71.78%           | 5.07%  | 0.00%  | 0.17%  | 0.94%  | 6.31%  | 0.93%  | 0.27%  | 0.00%    | 0.54%   | 6.85%  | 1.68%  | 0.00%   |
|                 | BAUCHI   | 0.00%            | 17.56% | 0.00%  | 0.00%  | 0.00%  | 0.31%  | 0.00%  | 0.00%  | 0.00%    | 0.00%   | 0.00%  | 0.00%  | 0.00%   |
|                 | BENUE    | 0.00%            | 0.00%  | 28.84% | 0.00%  | 11.60% | 0.00%  | 0.00%  | 0.00%  | 2.26%    | 0.00%   | 0.00%  | 0.00%  | 0.00%   |
|                 | BORNO    | 28.22%           | 30.57% | 0.00%  | 99.32% | 81.84% | 60.34% | 6.52%  | 77.63% | 12.78%   | 2.85%   | 10.81% | 35.56% | 16.91%  |
|                 | KADUNA   | 0.00%            | 0.19%  | 0.00%  | 0.00%  | 0.00%  | 0.00%  | 68.02% | 0.00%  | 1.84%    | 0.04%   | 0.00%  | 0.00%  | 0.00%   |
|                 | KANO     | 0.00%            | 1.16%  | 0.00%  | 0.00%  | 0.00%  | 0.00%  | 0.00%  | 0.00%  | 0.00%    | 0.00%   | 0.00%  | 0.00%  | 0.00%   |
|                 | KATSINA  | 0.00%            | 0.14%  | 0.00%  | 0.00%  | 0.00%  | 0.00%  | 0.00%  | 0.00%  | 0.00%    | 0.00%   | 0.00%  | 0.00%  | 0.00%   |
|                 | NASARAWA | 0.00%            | 1.68%  | 5.52%  | 0.00%  | 2.35%  | 0.00%  | 3.23%  | 0.00%  | 78.99%   | 6.14%   | 0.00%  | 0.00%  | 0.00%   |
|                 | PLATEAU  | 0.00%            | 22.42% | 0.00%  | 0.00%  | 0.00%  | 0.00%  | 19.61% | 0.00%  | 1.06%    | 79.54%  | 0.00%  | 0.00%  | 0.00%   |
|                 | TARABA   | 0.00%            | 8.13%  | 65.65% | 0.00%  | 3.27%  | 0.39%  | 0.00%  | 0.00%  | 2.13%    | 10.02%  | 82.35% | 0.00%  | 0.00%   |
|                 | YOBE     | 0.00%            | 13.03% | 0.00%  | 0.50%  | 0.00%  | 32.66% | 1.70%  | 22.10% | 0.94%    | 0.87%   | 0.00%  | 62.75% | 2.05%   |
|                 | ZAMFARA  | 0.00%            | 0.05%  | 0.00%  | 0.00%  | 0.00%  | 0.00%  | 0.00%  | 0.00%  | 0.00%    | 0.00%   | 0.00%  | 0.00%  | 81.04%  |

Table 4: IDP Population by state of origin and current location (State);

## 1F: TYPE OF LOCATION - RESIDENCE OF IDPS

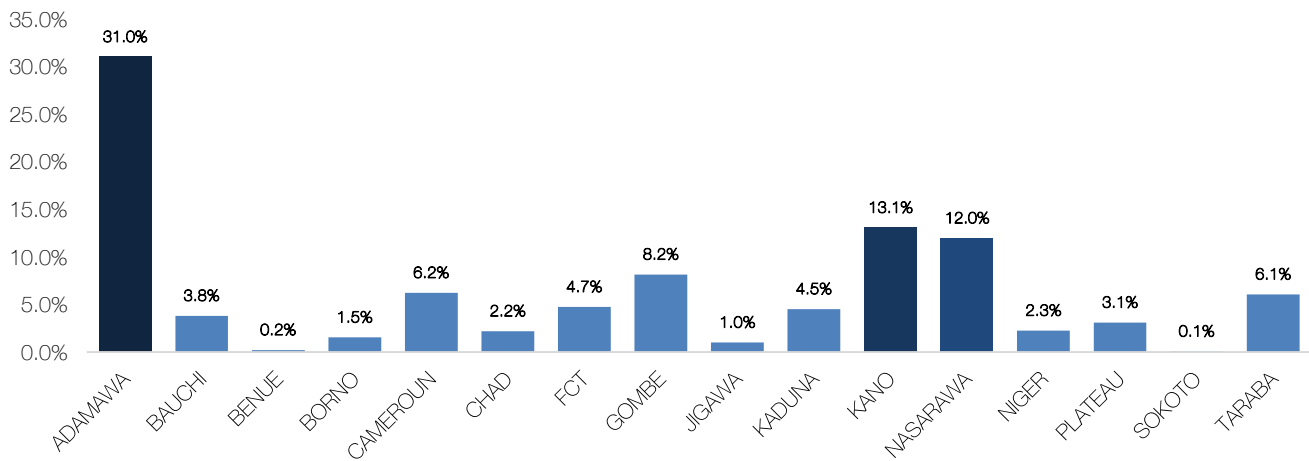


The vast majority of IDPs identified during the assessments live in host communities, with friends and relatives or in rented/donated houses. The data collected in the field indicates that 92% of IDPs live in host communities while 8% live in camps or camp-like sites.

Chart 3: IDP population by Location type

## 1D: RETURNEES

According to the results of the return assessments, a total of 389,224 IDPs returned to northern Adamawa (Mubi North, Mubi South, Michika, Maiha, Hong, Gombi and Madagali). Most returnees were originally displaced in Adamawa (31%), Kano (13%), Nasarawa (12%), Gombe (8%) and Taraba (6%).



*Graph 4: Returnees-State of origin*

### 3 SITES ASSESSMENT

#### 3.1. A: LOCATION AND NUMBER OF IDPs IN 84 SITES

A total of 84 sites have been visited during this round of assessment. 55 sites have been identified in the North East: 10 in Adamawa, 28 in Borno, 11 in Taraba and 6 in Yobe.

The number of individuals residing in these sites is 186,268 individuals (34,240 households).

The sites assessed during this exercise have been classified in three categories:

- **Camp:** open-air settlements, usually made-up of tents, where IDPs find accommodation;
- **Collective center:** pre-existing buildings and structures used for collective and communal settlements of the displaced population;
- **Transitional center:** centers which provide short term/temporary accommodation for the displaced population.

The majority of sites are categorized as collective settlements (59 sites) and are mostly schools (29 sites) and Government buildings (19 sites).

| Site type             | Number Of sites | Households (HH) | Number of individuals | Percentage of individuals |
|-----------------------|-----------------|-----------------|-----------------------|---------------------------|
| Camp                  | 23              | 7,827           | 41,719                | 22.4%                     |
| Collective Settlement | 59              | 25,764          | 142,471               | 76.5%                     |
| Transitional Centre   | 2               | 649             | 2,078                 | 1.1%                      |
| Total                 | 84              | 34,240          | 186,268               | 100%                      |

Table 5: Number of sites - State

#### 3.1. B: SECTOR ANALYSIS



##### SHELTER

The most common types of camps identified during the site assessments were classified as informal settlements. Out of the 55 camps assessed in the North East, 31 are not officially recognized. In the majority of sites (42), more than 75% of the IDP population live indoors. In 5 sites, more than 75% of the IDP population live in makeshift shelter while in 8 other sites, more than 75% of the IDP population live in tents.

In most sites, IDPs do not have access to electricity (39 sites) or to safe cooking facilities (22 sites).

In the majority of sites (56), IDPs declared that blankets were the most needed type of NFI.



##### WASH

In the majority of sites (61) the main water source is located on-site within a 10 minute walk. In 8 sites, the main water source is located off-site within a 10 minute walk. In 12 sites the water sources is located off-site and requires more than 10 minute walk.

At 35 sites hand pumps are the main drinking water source, at 26 sites piped water supply provides the main source. The drinking water is reported to be potable in 54 sites. However, in 20 sites, households complained about its unpleasant taste. At 63 sites, the latrines were assessed as in "no so good conditions" while there were no separate toilets for male and female in 48 sites. In 47 sites, toilets do not have a locker. Most sites (37) do not have garbage disposal system. Hand washing stations were found in 58 sites but with no water or soap.

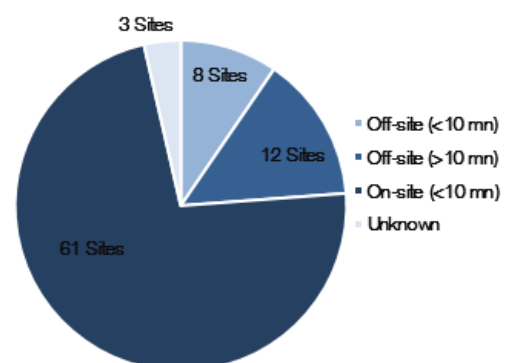


Chart 4: Location of sites main source of water

At the majority of sites (61), there was no evidence of hand washing practices. At 63 sites, there were evidences of open field defecation and 65 sites do not have drainage system.



## FOOD AND NUTRITION

According to the data collected in the field, food was accessible in 80 of the sites that were assessed (45 on-site and 35 off-site). In most sites, food is accessed through distribution (35 sites) or cash (21 sites). Most of the food distributions (55 sites) are carried out on an irregular basis. Screening for malnutrition was only identified in 27 sites.



## HEALTH

In the majority of sites (52), residents reported malaria as the most prevalent health problem. 63 sites reported to have access to health facilities. In 37 sites the health facilities are located on site – less than 3 kilometers away – and in 22 sites the health facilities are located off site –more than 3 kilometers away –.



## EDUCATION

In 55 sites children have access to formal or informal education. In the majority of sites where education is available (36), the nearest education facilities are located on site. In 27 sites none of the children attend school while in 19 sites less than 25% of children attend school. In 13 sites, the number of students who attend school is less than 50% of the children and this percentage increases to less than 75% in 15 sites.



## PROTECTION

Incidents were identified in 35 out of the sites assessed and mostly classified as friction among residents and theft. Efforts are currently ongoing to better assess other kind of incidents and most particularly GBV cases.



## COMMUNICATION

At the majority of the sites (47), resident get information from family and friends. At 38 sites residents require more information about the situation in their areas of origin whereas residents in 23 sites required more information about safety and security.



## LIVELIHOOD

In the majority of the sites (46) farming is the main occupation of the IDPs. However in 37 sites, residents do not have access to land cultivation. At 49 sites residents have access to income generating activities but mostly on an irregular basis.



## 4 METHODOLOGY

The DTM activities are being implemented according to the methodology endorsed by the Government of Nigeria and carried out by teams composed of members of the National Emergency Management Agency (NEMA), the State Emergency Management Agency (SEMA), the Nigerian Red Cross Society and IOM. Humanitarian partners on the field are also participating in the assessment on an ad hoc basis. Data are collected following the below steps:

### *Local Government area (LGA) level location assessment:*

An assessment is conducted with key informants at the LGA level. The type of information collected at this level includes: displaced population estimates including household and individual level estimates, the identification of wards within the LGA with displaced populations and the type of displacement locations, reason for displacement, time of arrival of IDPs, and location of origin. The assessment also captures if IDPs have originated from the LGA and records contacts of key informants and organizations assisting IDPs in the area. The information is collected via interviews with key informants, who can be representatives of the LGA administration, IDP community leaders, religious leaders, Ward leaders, and NGO or humanitarian aid workers. The results of the LGA assessments, most importantly the indication of the presence of displaced households in specified wards/villages, disaggregated by those displaced in host communities and those displaced in camp-like settings, are utilized to advise whether to continue assessments at the ward/village level.

### *Ward/village level location assessments:*

Assessments are conducted with key informants at the ward/village level. The information collected includes: estimates on the number of displaced households and individuals living in the ward, details on the location and type of residence of displaced households (host community – free or renting, camp-like settings – formal and informal), reason for displacement, areas of origin, and length of displacement. The assessment also includes information on displacement originating from the ward, as well as a demographic calculator based on a sample of IDPs in host communities and camp-like settings. Interviews are conducted with key informants, such as Ward leaders, representatives of the LGA administration, IDP community leaders, religious leaders, and NGO or humanitarian aid workers. The results of the ward/village assessments are used to verify the information collected at LGA level. The ward/village level location assessments are carried out in all those wards identified as having IDP populations during the LGA assessment.

### *Site assessments*

The site assessments are undertaken in identified IDP sites (both camps and camp-like settings) as well as in host communities to capture detailed information on the key services available. Site assessment forms are utilized to record the exact location and name of a site/location, accessibility constraints, size and type of the site/location, whether registrations is available, details about the site management agency (in camps and camp-like sites) and if natural hazards put the site/location at risk. The form also captures details about the IDP population, including their place of origin, and demographic information on the number of households with a breakdown by age and sex, as well as information on IDPs with specific vulnerabilities. The form furthermore captures details on key access to services in different sectors: shelter and NFI, WASH, food, nutrition, health, education, livelihood, communication, and protection. The information is captured through interviews with representatives of the site management agency and other key informants, including IDP representatives.

### *Registration:*

The registration exercise consists in establishing the profile of IDPs by collecting detailed information at household level. The data is captured through an individual interview with the head of household and include information on individual household members, displacement history, education, livelihood, return intention, assistance received and needs as well as on vulnerability. This exercise is conducted in camps, camp like sites and host communities.

### **Contacts:**

**NEMA:** Alhassan Nuhu, Director, Disaster Risk Reduction, alhassannuhu@yahoo.com +234 8035925885

**IOM:** Stéphanie Daviot, Project Officer, sdaviot@iom.int +234 9038852524

**<http://nigeria.iom.int/dtm>**