

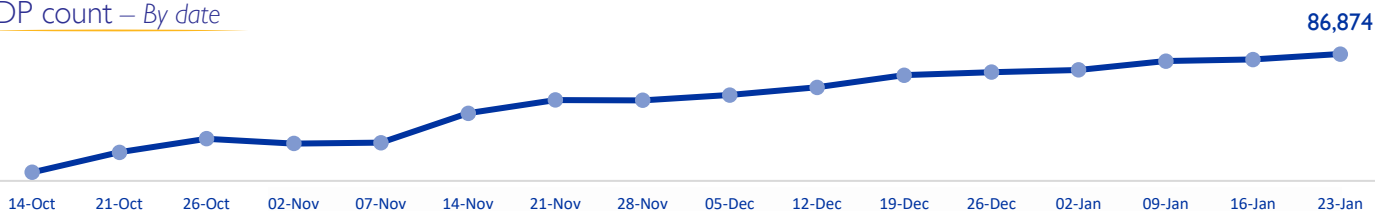
MOBILITY SNAPSHOT – Round 21

Report Production Date: 25 January 2024 | Data collected up till 4 pm on 23 January 2024

Overview

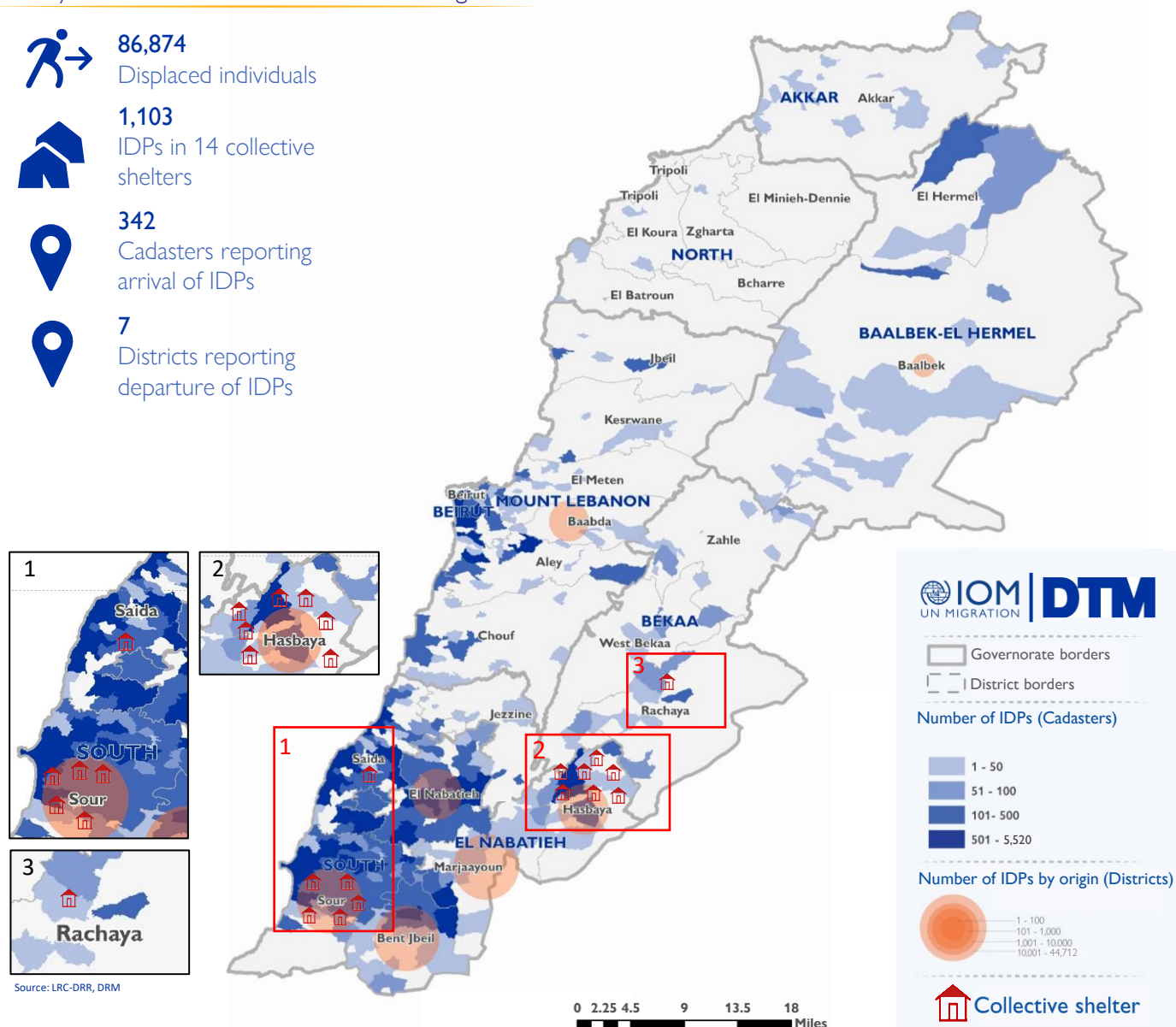
Armed confrontations have been occurring at the Southern Lebanese border since the 8 October 2023. As a consequence, several thousand families from South Lebanon have fled their homes. The International Organization for Migration (IOM) conducts daily monitoring of population movements, with the objective of informing preparedness and response planning. Population numbers for collective shelters and El Nabatieh governorate have been directly provided from the data collected at the level of the emergency operations rooms, supported by the Lebanese Red Cross, (LRC) and the Disaster Risk Management (DRM) Unit.

IDP count – By date



IDPs by cadaster of arrival and district of origin

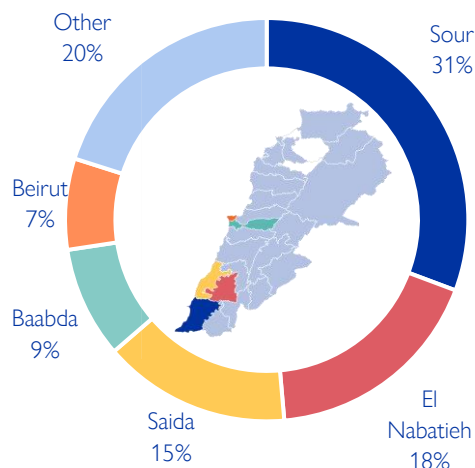
- 86,874**
Displaced individuals
- 1,103**
IDPs in 14 collective shelters
- 342**
Cadasters reporting arrival of IDPs
- 7**
Districts reporting departure of IDPs



Displacement within Lebanon – By district of arrival

Governorate	District	# of Cadasters	# of Locations	IDPs
South	Sour	53	66	26,672
El Nabatieh	El Nabatieh	40	40	15,553
South	Saida	38	51	13,086
Mount Lebanon	Baabda	13	23	7,761
Beirut	Beirut	5	10	6,345
Mount Lebanon	Aley	17	29	4,699
El Nabatieh	Bent Jbeil	28	28	3,703
Mount Lebanon	Chouf	18	32	2,080
El Nabatieh	Marjaayoun	13	13	1,353
Mount Lebanon	El Meten	17	20	1,112
El Nabatieh	Hasbaya	12	12	969
Mount Lebanon	Jbeil	6	8	842
South	Jezzine	7	7	532
Baalbek-El Hermel	Baalbek	18	23	523
Bekaa	West Bekaa	6	6	362
Bekaa	Rachaya	7	8	360
Baalbek-El Hermel	El Hermel	4	8	250
Bekaa	Zahle	10	10	243
Mount Lebanon	Kesrwane	5	5	223
Akkar	Akkar	17	18	174
North	El Batroun	3	3	11
North	Tripoli	2	2	10
North	El Koura	2	2	6
North	Zgharta	1	1	5
Total		342	425	86,874

Chart 1: IDPs distribution by district of arrival

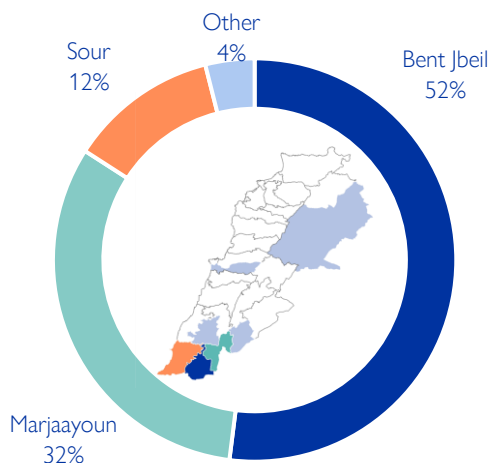


As of 23 January, Lebanon has recorded 86,874 internally displaced persons (IDPs), showing a 5% increase since 16 January. IDPs have sought safety in 425 locations (villages or neighbourhoods) across 342 cadasters throughout Lebanon. Displacement has been observed in 24 out of the 26 districts across all eight governorates. Most of the IDPs (80%) are in five districts out of the total 24 districts hosting IDPs—specifically, Sour, El Nabatieh, Saida, Baabda, and Beirut.

Displacement within Lebanon – By district of departure

Governorate	District	IDPs
El Nabatieh	Bent Jbeil	44,712
El Nabatieh	Marjaayoun	27,885
South	Sour	10,392
El Nabatieh	Hasbaya	2,150
El Nabatieh	El Nabatieh	1,172
Mount Lebanon	Baabda	560
Baalbek-El Hermel	Baalbek	3
Total		86,874

Chart 2: IDPs distribution by district of departure



The majority of IDPs (96%) originate from three districts. These three districts span along the Southern border of Lebanon. Specifically, 52% are from Bent Jbeil, 32% are from Marjaayoun, and 12% are from Sour. The remaining 4% originate from four different districts, Hasbaya, El Nabatieh, Baabda, and Baalbek.

Movement of IDPs from governorate of origin to governorate of displacement

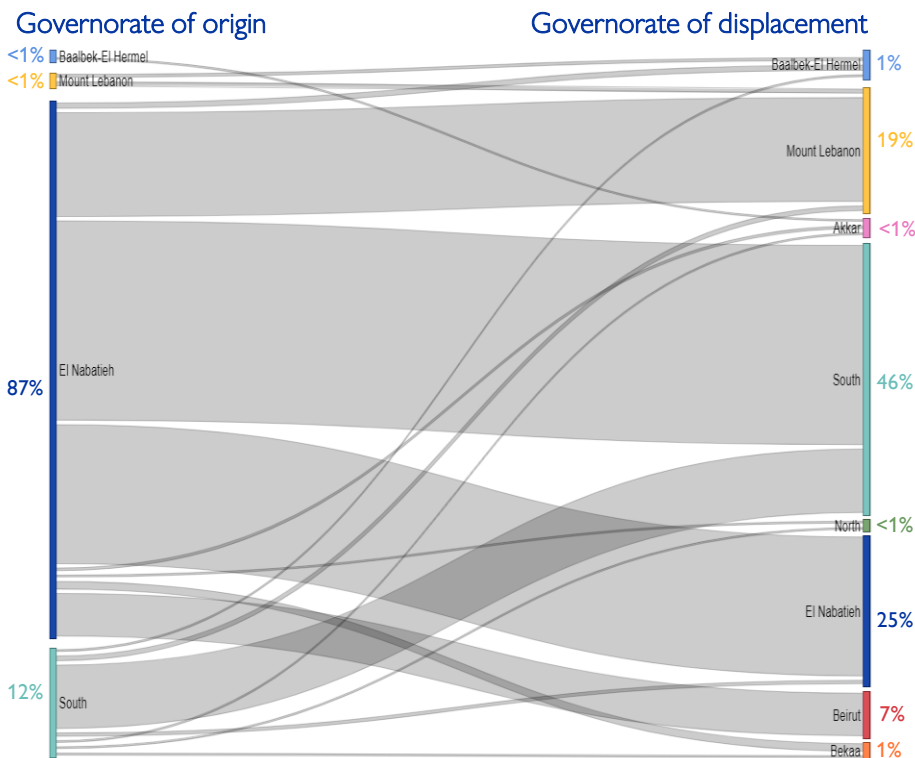
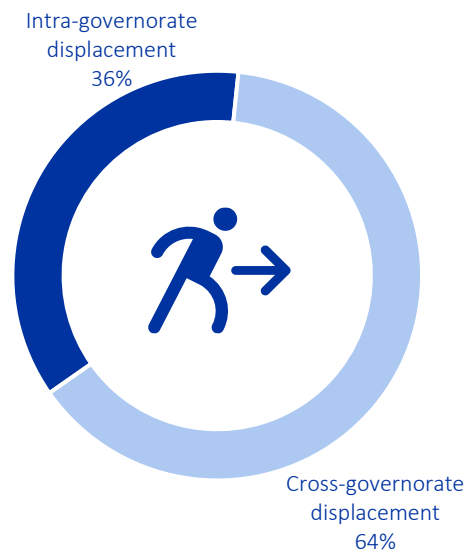


Chart 3: Displacement trends



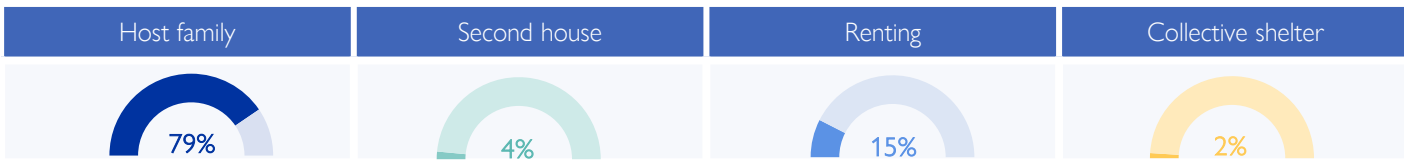
Overall, 64% of the displacement has occurred outside the boundaries of the IDPs' governorate of origin. While 87% (75,919) of the IDPs originate from El Nabatieh, of this population 72% fled to locations outside the boundaries of El Nabatieh governorate. However, in the South governorate, where 12% (10,392) of IDPs originated, 92% of these IDPs chose to move internally within the governorate.

Arrivals in the last week – (17 January to 25 January)

Governorate	District	# of Cadasters	# of Locations	IDPs
Beirut	Beirut	2	3	800
South	Saida	14	17	771
South	Sour	26	26	500
Mount Lebanon	Aley	3	7	285
Bekaa	West Bekaa	1	1	150
Mount Lebanon	Baabda	1	3	90
Baalbek-EI Hermel	Baalbek	3	3	30
Mount Lebanon	El Meten	2	2	19
Mount Lebanon	Chouf	2	2	17
Bekaa	Zahle	2	2	12
Akkar	Akkar	2	2	9
South	Jezzine	1	1	2
Total		59	69	2,685

In the past week, 2,685 new displacements have been recorded in 59 cadasters across 12 districts. These individuals might be experiencing displacement for the first time or undergoing secondary movement. These individuals have arrived from Bent Jbeil, El Nabatieh, Marjaayoun, Hasbaya, and Sour districts.

IDPs distribution by shelter type – By Governorate



Around 79% of IDPs are currently living with host families, while 15% have opted for rental housing. Another 4% have relocated to their secondary residences. Around 2% are housed in 14 collective shelters.

In Sour, there are presently five collective shelters accommodating 757 IDPs; in Hasbaya, there are seven collective shelters hosting 136 IDPs, in Rachaya, there is one collective shelter hosting 38 IDPs and in Saïda, there is one collective shelter hosting 172 IDPs.

Governorate	Host family	Second house	Renting	Collective shelter
Bekaa	55%	1%	40%	4%
Baalbek-El Hermel	73%	3%	24%	0%
Beirut	55%	32%	13%	0%
El Nabatieh	84%	2%	13%	1%
Mount Lebanon	59%	2%	39%	0%
North	44%	0%	56%	0%
South	94%	0%	4%	2%
Akkar	52%	0%	48%	0%

* The shelter information for El Nabatieh is derived from Round 12 data. Consequently, there is a 2% decrease in IDPs residing in Collective shelters, accompanied by a corresponding 2% increase in IDPs hosted by Families.

Displacement demographics

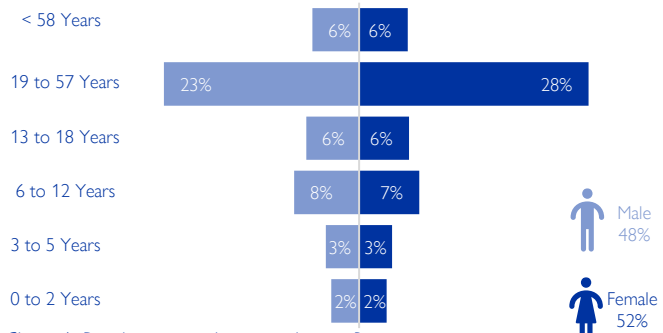


Chart 4: Displacement demographics – Based on Round 19 Data

37% of IDPs are children (< 18 years), while 34% are female adults and 29% are male adults.

Note: These figures represent sample data of 2 households per location provided by key informants and do not reflect the entire IDP population in each area.

Methodology

The objective of the Mobility Snapshot is to support the humanitarian community in preparedness and response planning. Multi-layered data is routinely captured through Rounds using a suite of methodological tools designed to track and monitor displacement. These tools are in line with the [DTM Global Methodological Framework](#).

Data is collected nationwide through a combination of face-to-face and remote data collection methods, utilizing a network of over 44 enumerators and 3,600 key informants. These key informants consist of government officials, mukhtars, community representatives, and neighborhood focal points.

The following citation is required when using any data and information reported in this information product: "International Organization for Migration (IOM), January 2024. DTM Mobility Snapshot, Round 21 IOM, Lebanon". For more information on terms and conditions of DTM reports and information products, please refer to <https://dtm.iom.int/terms-and-conditions>.