

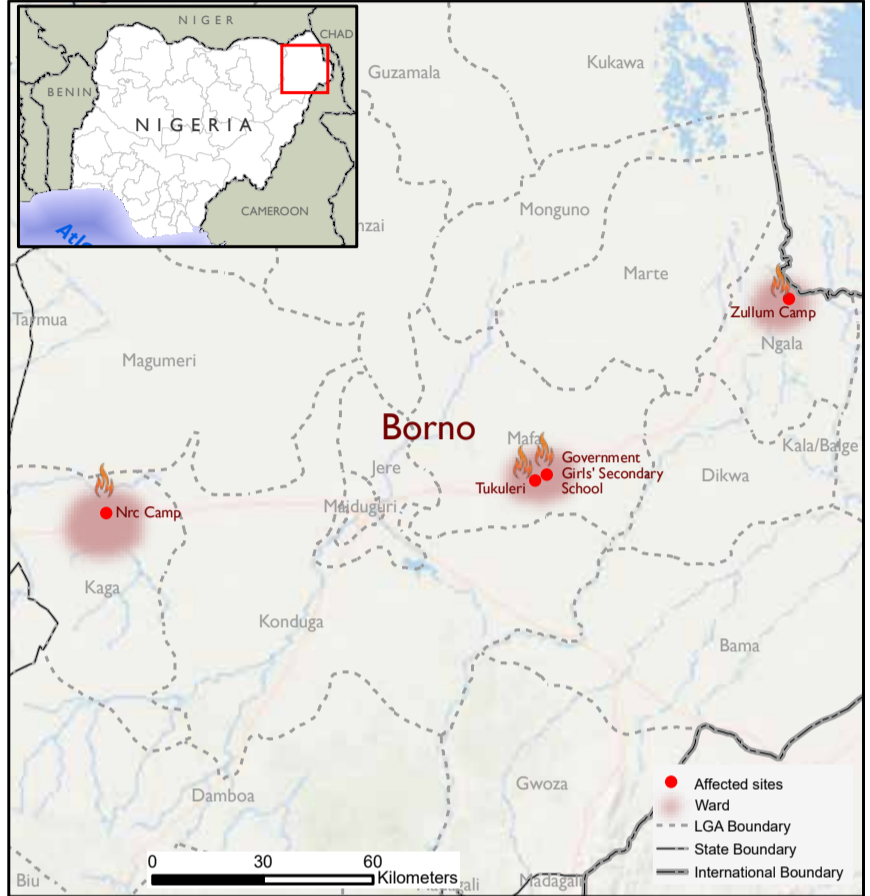
93
Individuals affected

19
Damaged Shelters

Trigger:



Picture showing damaged shelters after the fire outbreak © IOM 2024



Map 1. Map showing locations affected by the fire outbreak
This map is for illustration purposes only. The boundaries and names shown, and the designations used on this map do not imply official endorsement or acceptance by the International Organization for Migration.

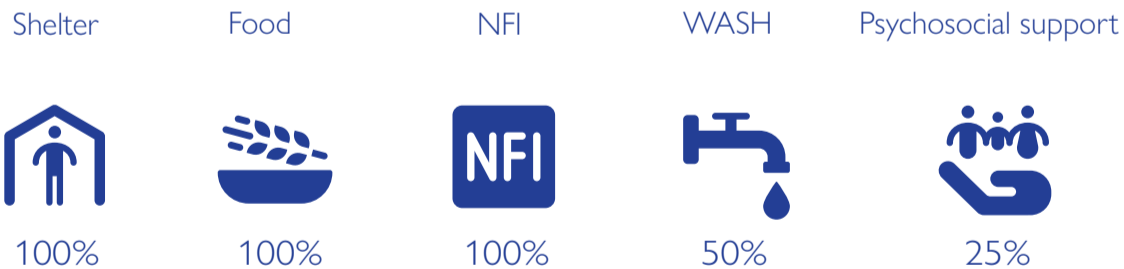
Overview

Between 08 and 13 January 2024, fires broke out in Government Girls Secondary School, Zulum and NRC Camps of Mafa, Ngala, and Kaga Local Government Areas (LGAs) and Tukuleri Host Community of Mafa LGA in Borno State. There were no reported injuries or fatalities.

The fire outbreaks impacted 12 makeshift shelters and 7 emergency shelters, affecting 93 individuals in 19 households. The affected individuals included 60 children, 16 women and 17 men.

Needs

Of all the needs identified, shelter and NFI (non-food items) were the most prevalent. Other needs included food, psychosocial support and WASH.



*Multiple Choices Selected

Fig. 1. Most needed assistance

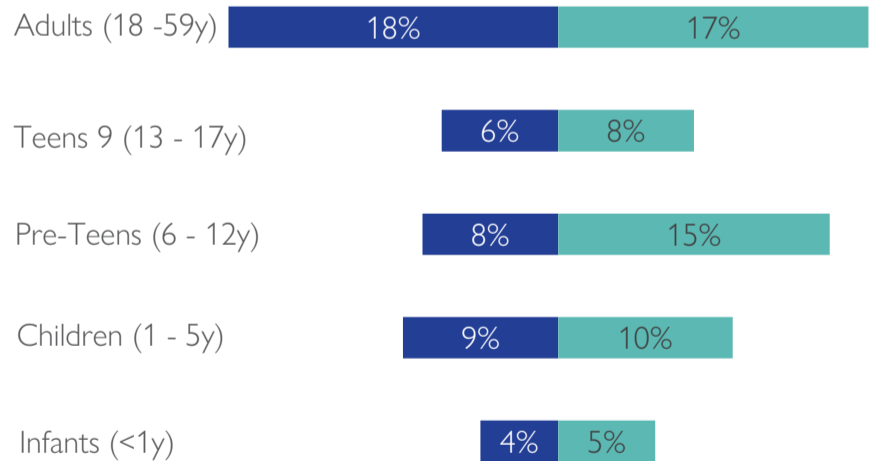


Fig. 2. Gender breakdown of affected population

LGA	Ward	Number of Affected Household	Number of Affected Individuals				Number of Partially Damaged Shelters	Number of Damaged Shelters
			Male	Female	Total	Children		
Kaga	Benisheikh	4	4	7	11	8	0	4
Mafa	Mafa	12	31	36	67	42	0	12
Ngala	Ngala Ward	3	7	8	15	10	3	0
Total		19	42	51	93	60	3	16