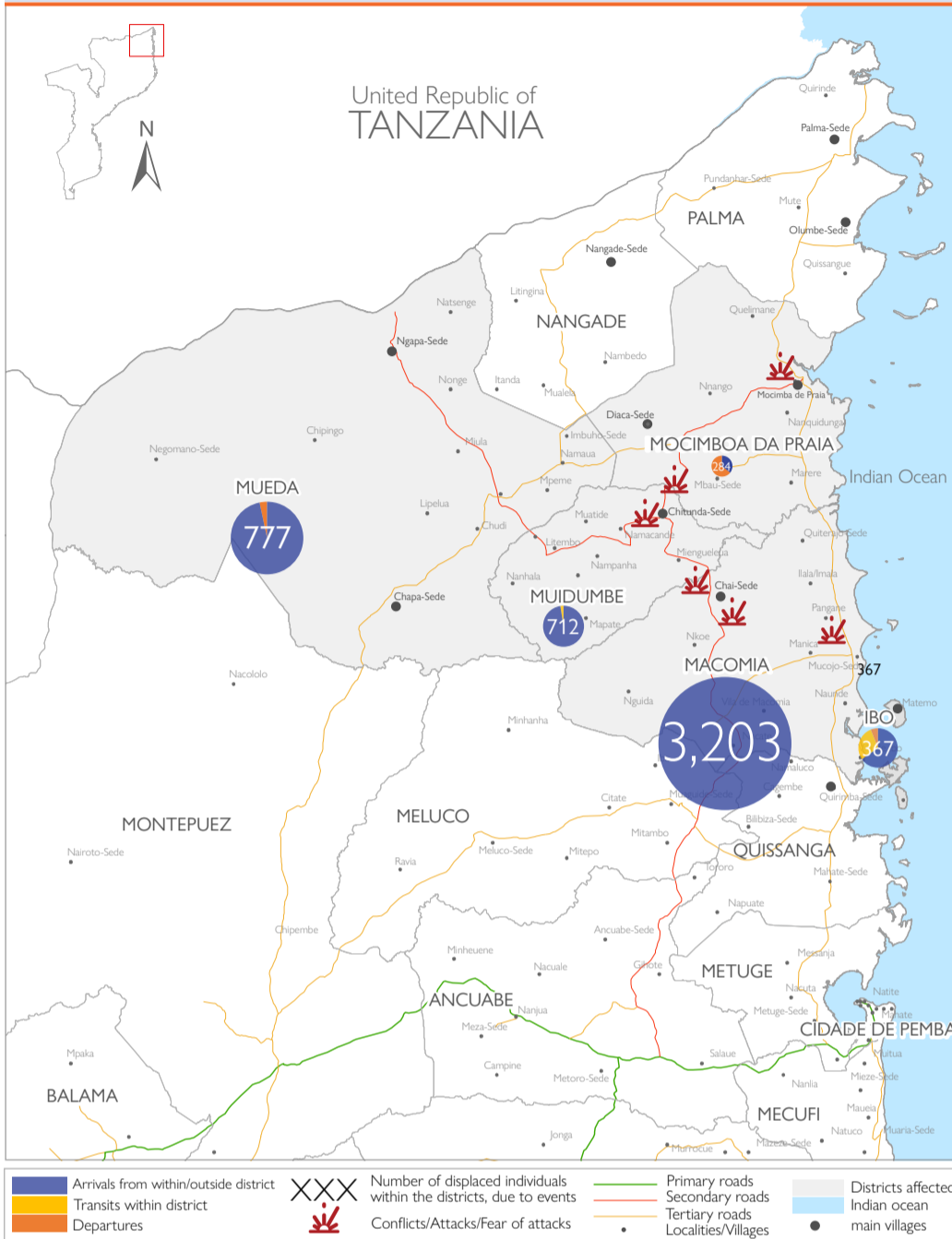


Ibo, Macomia, Mueda and Muidumbe Districts, Cabo Delgado, Mozambique



Between 26 December 2023 and 17 January 2024, a series of attacks in villages across Macomia, and Muidumbe triggered the displacement 5,343. Of the total individuals displaced, 411 families with 1,407 individuals have taken refuge in displacement centers of Macomia (Changane, Xinavane, Nanga A and Nanga B), 220 families with 740 individuals have taken refuge in displacement centers of Mueda (Imbuho, Mpeme) and 78 families with 260 individuals have taken refuge in displacement centers of Muidumbe (Miteda and Lutete).

During this reporting period, cumulative displacements have been mapped across 5 districts. Please consider below graphs for movement flows at Posto level. Further locational-level data is also available from DTM teams.

- In summary, Macomia reports an estimate of 840 families with 3,203 individuals (inclusive of 1,881 children) who have been displaced to Nanga A, Nanga and Changane.
- In Mueda, 231 families with 777 individuals (inclusive of 417 children) have been displaced from Muidumbe and are currently located in Mueda Sede, Mpeme and Imbuho.
- In Muidumbe, an estimate of 173 families with 712 individuals (inclusive of 277 children) have been displaced to Namacande, Miteda and Muatide.
- In Ibo, 97 families with 367 individuals (inclusive of 182 children) have been displaced from Macomia and are currently located on Matemo Island. Approximately 68 families with 255 individuals arriving on Matemo Island have proceeded to Quirambo Island within the last weeks.

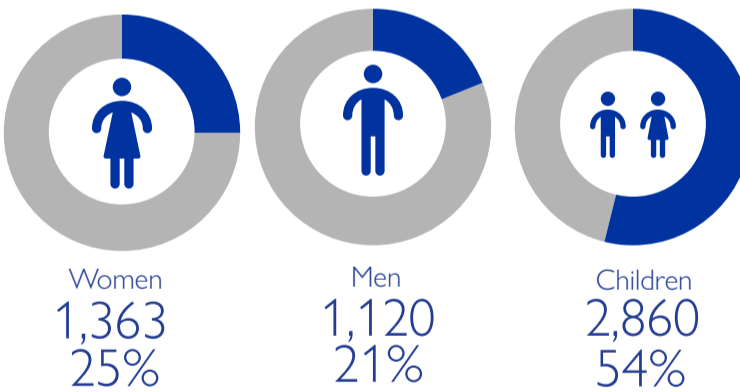
Owing to prevailing security concerns in the region reported by displaced families, intentions on duration of their stay in current locations of displacement sites and host communities remains uncertain. Movements in the region continue to be dynamic within the districts. The objective of the Emergency Tracking Tool (ETT) - Movement Alert is to collect information on large and sudden population movements, providing humanitarian response partners with data on IDPs to support effective humanitarian response. Information is collected through key informants' interviews or direct observation. This alert provides basic information on displacements, and additional information can be shared upon request.

URGENT NEEDS

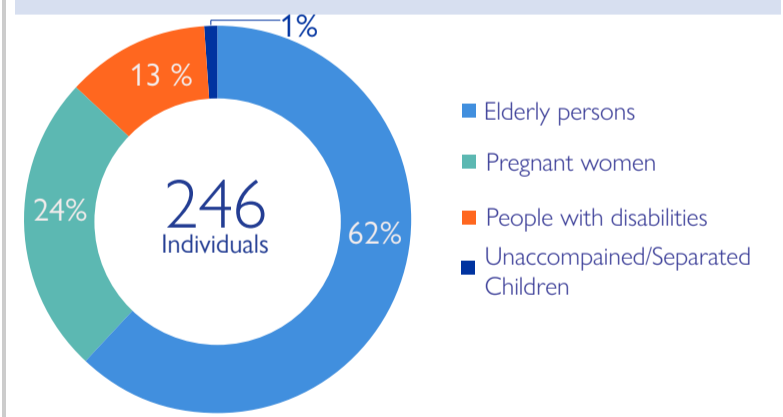


Urgent needs are calculated by weighting the total number of IDP arrivals in each group against the stated priority

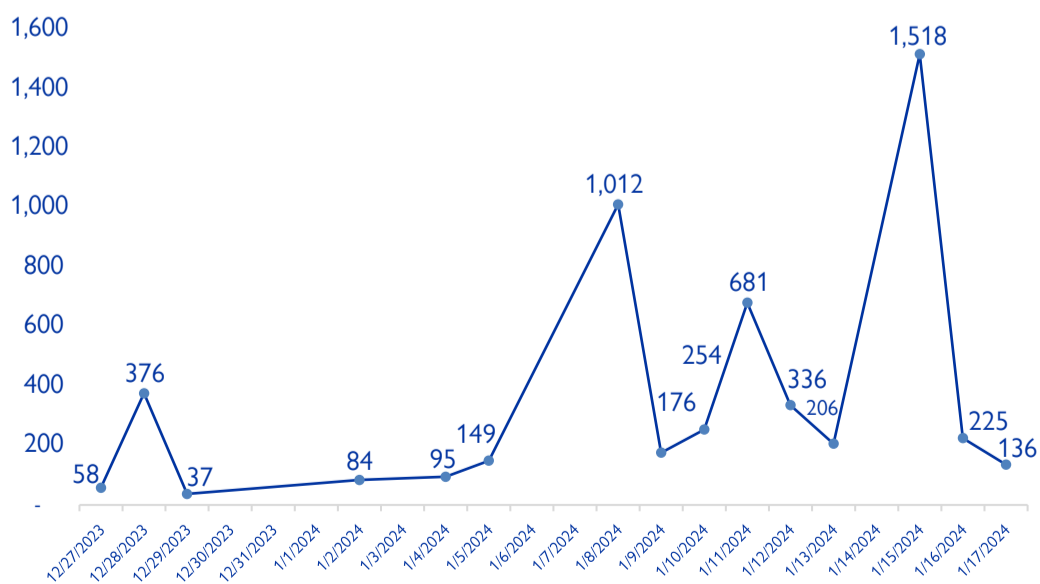
DEMOGRAPHIC PROFILE



VULNERABILITIES



TREND: DISPLACED INDIVIDUALS



MOVEMENT FLOW (DEPARTURE AT POSTO LEVEL)

