

# WEEKLY DISPLACEMENT SNAPSHOT (15)

2 January 2024

Displacement Data Reporting Date: 27 December 2023

Mixed Cross-Border Movement Reporting Date: 31 December 2023



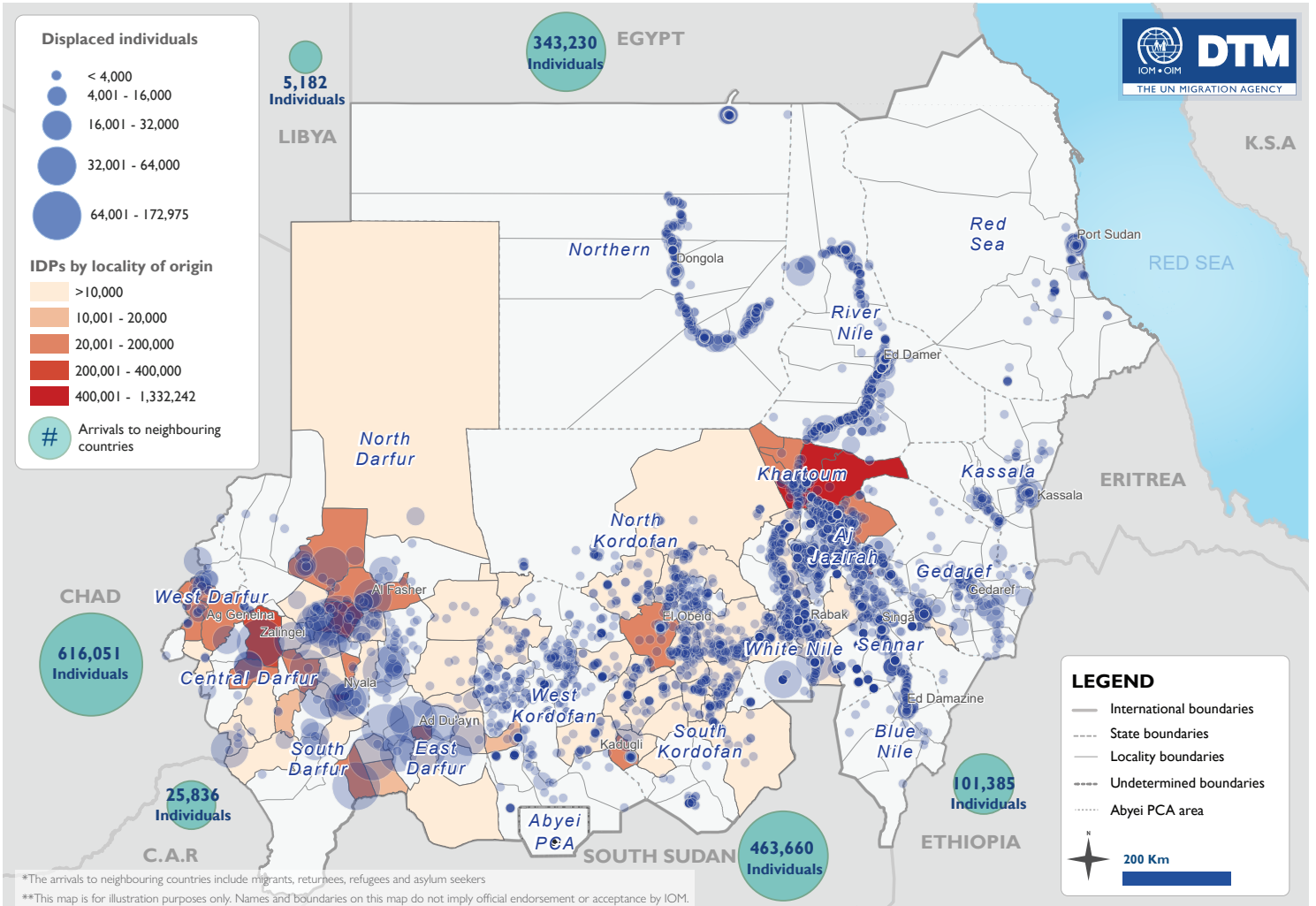
## Overview

From 15 April 2023, armed clashes erupted between the Sudanese Armed Forces (SAF) and the Rapid Support Forces (RSF). As a result of the military clashes, DTM Sudan estimates that 5,942,580 individuals (1,182,895 households) were recently internally displaced. The internally displaced persons (IDP) caseload was observed in 6,213 locations across all of Sudan's 18 states.\* The highest proportions of IDPs were observed across South Darfur (13%), East Darfur (11%), River Nile (11%), Aj Jazirah (8%), and North Darfur (8%).

Field teams reported that the IDPs were originally displaced from twelve states. The majority (3,611,505, 61%) were reportedly displaced from Khartoum state; followed by South Darfur (16%), North Darfur (8%), Aj Jazirah (5%), Central Darfur (4%), West Darfur (3%), East Darfur (1%), South Kordofan (1%), North Kordofan (1%), West Kordofan (<1%), White Nile (<1%), and Sennar (<1%). DTM Sudan also estimates that approximately 2 per cent (2%) of the IDP caseload are non-Sudanese nationals.\*\*

Recent conflicts erupted between SAF and RSF in Medani and Sharg Aj Jazirah localities in Aj Jazirah state. As a result, widespread displacement was observed across Aj Jazirah, Sennar and White Nile state resulting in approximately 234,000 individuals secondarily displaced during December 2023.

In addition to the internal displacement, the conflict in Sudan has caused the mixed cross border movements of 1,555,344 individuals into neighbouring countries namely: Egypt, Libya, Chad, Central African Republic, South Sudan and Ethiopia. Sixty-one per cent of arrivals tracked in those countries were Sudanese nationals and 39 per cent were estimated to be foreign nationals and returnees. The majority of arrivals were reported in Chad (40%), South Sudan (30%), and Egypt (22%).\*\*\* This product provides a brief snapshot of ongoing displacement across Sudan post-15 April 2023. For more granular information on the humanitarian and displacement context, please see [DTM's Monthly Displacement Overview 04](#).



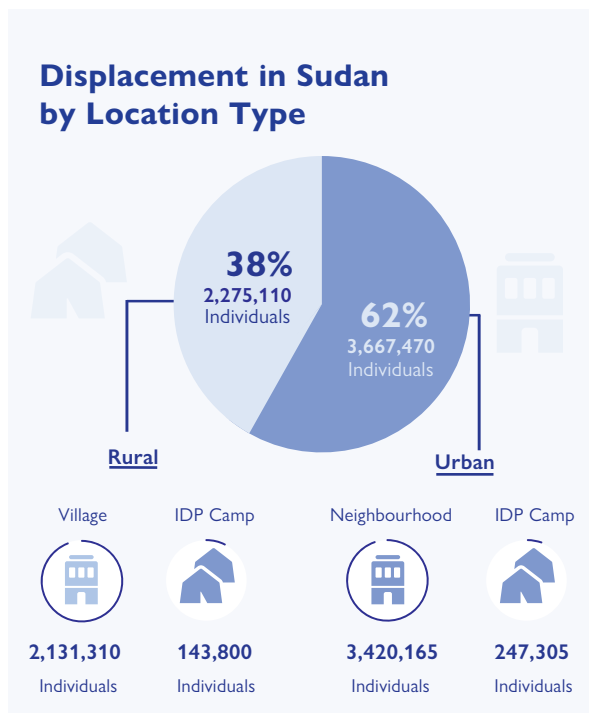
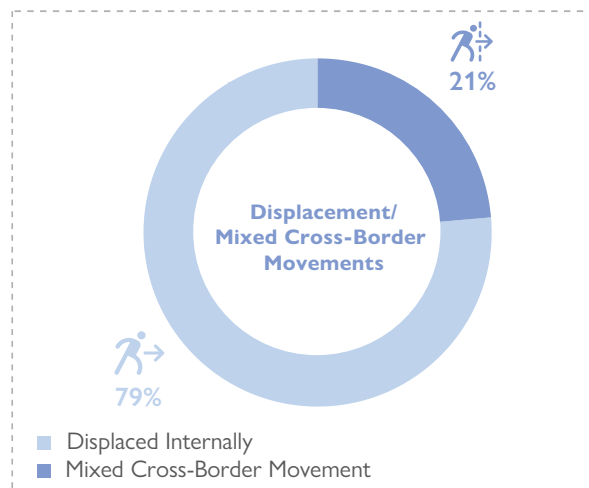
Map 1: Displacement across Sudan and into neighbouring countries since 15 April 2023.

\*The data from many locations has been gathered with the co-ordination of the Humanitarian Aid Commission.

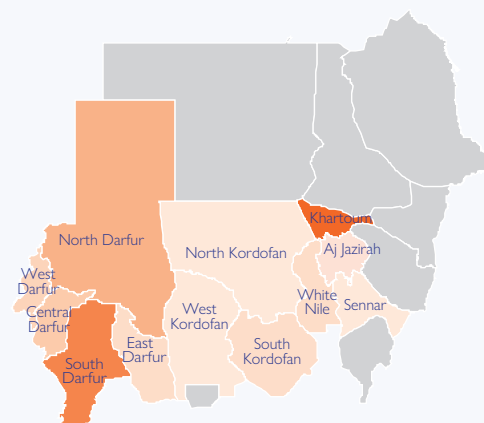
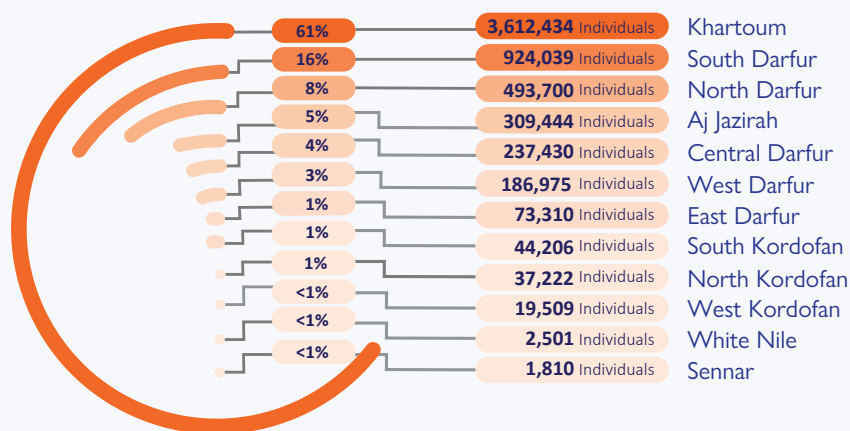
\*\*Field teams collect information on the displacement of foreign nationals in Sudan regardless of whether those individuals have sought registered as a refugee international protection or not. Due to the ongoing operational limitations, DTM is currently unable to distinguish between those who sought asylum and are registered as refugee and those who are not. \*\*\*According to the last available update from the Ministry of Foreign Affairs as of 19 October 2023.

States of Displacement	Snapshot 15 2 Jan 2023	MDO 4 29 Dec 2023	Difference	% Total IDPs*	Number of locations
Aj Jazirah	504,620	504,276	344↑	8%	1,485
Blue Nile	118,093	86,230	31,863↑	2%	95
Central Darfur	361,560	360,385	1,175↑	6%	20
East Darfur	659,180	658,830	350↑	11%	27
Gedaref	367,884	352,097	15,787↑	6%	249
Kassala	155,037	150,307	4,730↑	3%	175
Khartoum	39,858	39,503	355↑	1%	105
North Darfur	455,673	454,248	1,425↑	8%	113
North Kordofan	137,266	135,790	1,476↑	2%	532
Northern	381,309	378,626	2,683↑	6%	324
Red Sea	191,891	182,238	9,653↑	3%	133
River Nile	645,994	645,644	350↑	11%	810
Sennar	418,336	408,689	9,647↑	7%	328
South Darfur	694,893	694,593	300↑	12%	39
South Kordofan	107,666	107,570	96↑	2%	351
West Darfur	125,650	123,835	1,815↑	2%	40
West Kordofan	97,085	96,875	210↑	2%	501
White Nile	480,585	477,041	3,544↑	8%	886
<b>Total</b>	<b>5,942,580</b>	<b>5,856,777</b>	<b>85,803</b>	<b>100%</b>	<b>6,213</b>

Table 1: Overview of displacement by state<sup>1</sup>



## States of Origin



**Disclaimer:** DTM Sudan is a suite of methodological tools which aims to track and monitor displacement. DTM collects primary data, with a focus on providing best estimates for support of the wider humanitarian community. DTM Sudan notes that military clashes remain continuous in many areas across Sudan. As such, DTM is currently collecting data through a dual combination of face-to-face and remote interviews with key informants across its network. Data on flows into neighbouring countries is based on available information from DTM flow monitoring networks and secondary sources. Figures should be treated as preliminary findings only and are subject to change via future verification exercises. Percentages across the report may not equal 100 per cent due to rounding.

## Shelter Categories (by households)\*\*

States	Camps	Host Communities	Rented Accommodations	Improvised / Critical Shelters	Schools or Other Public Buildings	Open Area Informal Settlements
Aj Jazirah 98,686	-	70% 74,486	1% 1,278	-	19% 18,400	5% 4,522
Blue Nile 23,643	-	66% 15,584	31% 7,259	-	-	3% 800
Central Darfur 72,312	20% 14,727	33% 24,150	-	2% 1,500	11% 7,685	34% 24,250
East Darfur 131,816	2% 2,602	80% 105,161	2% 2,426	2% 3,000	13% 17,058	1% 1,569
Gedaref 73,018	2% 1,457	77% 56,138	16% 11,662	-	5% 3,531	<1% 230
Kassala 31,004	-	78% 24,080	18% 5,441	-	4% 1,199	1% 284
Khartoum 7,971	-	69% 5,480	27% 2,169	-	4% 322	-
North Darfur 91,072	20% 17,807	44% 40,222	<1% 263	2% 1,764	10% 9,185	24% 21,831
North Kordofan 26,862	-	94% 25,217	1% 142	1% 174	4% 1,201	<1% 128
Northern 76,190	-	82% 62,290	10% 7,809	-	8% 6,091	-
Red Sea 38,314	-	50% 22,678	27% 10,429	2% 898	4% 1,722	7% 2,587
River Nile 128,882	-	75% 97,002	18% 23,193	<1% 261	6% 8,092	<1% 334
Sennar 83,569	-	75% 62,340	19% 13,070	-	2% 1,552	8% 6,607
South Darfur 138,977	18% 24,846	39% 53,726	-	2% 3,280	36% 49,820	5% 7,305
South Kordofan 21,038	-	89% 18,751	<1% 93	-	8% 1,770	2% 424
West Darfur 25,130	-	51% 12,710	-	3% 850	44% 11,139	2% 431
West Kordofan 19,025	-	95% 17,979	1% 160	-	1% 659	1% 227
White Nile 95,386	18% 16,782	61% 58,327	8% 7,804	-	9% 9,022	4% 3,451
<b>GRAND TOTAL</b>	<b>7% 78,221</b>	<b>65% 776,321</b>	<b>8% 93,198</b>	<b>1% 11,727</b>	<b>13% 148,448</b>	<b>6% 74,980</b>

# Total Households: 1,182,895

\*\* Total may not be 100 per cent due to rounding.

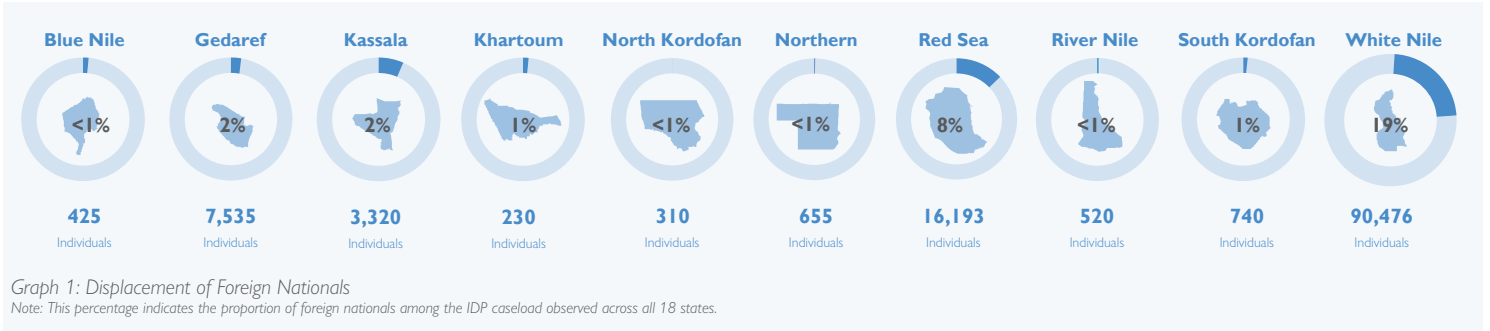
## Displacement of Foreign Nationals within Sudan

 **120,404** → 2%<sup>1</sup>  
individuals

From the total reported IDP caseload, field teams indicated that 120,404 IDPs were foreign nationals (approximately 2% of total IDPs across Sudan). These individuals were located across the following locations, in descending order of the number of foreign nationals: White Nile, Red Sea, Gedaref, Kassala, South Kordofan, Northern, River Nile, Blue Nile, North Kordofan, and Khartoum. DTM estimates that the IDP caseload in the remaining states are all Sudanese nationals. The majority of foreign nationals (90,476 IDPs) were located in

White Nile state – where they constituted 19 per cent of the IDP caseload in that state.

By comparison, foreign nationals constituted smaller proportions of the observed caseload in Red Sea (8%), Kassala (2%), Gedaref (2%), Blue Nile (<1%), South Kordofan (1%), Khartoum (1%), North Kordofan (<1%), Northern (<1%), and River Nile (<1%).

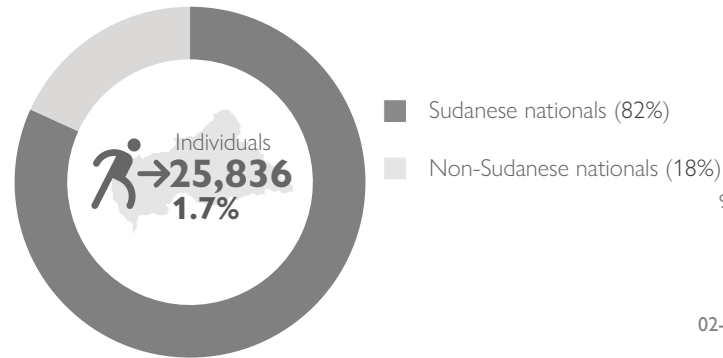


## Mixed Cross-Border Movement

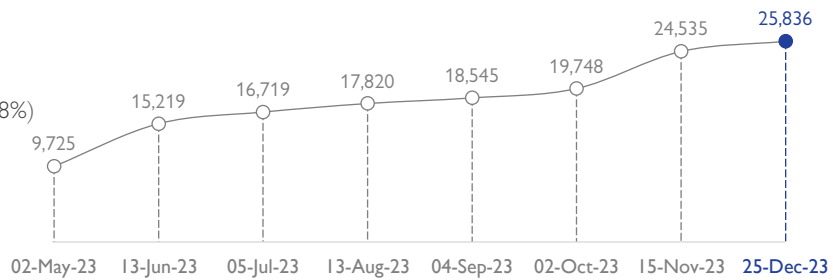
 **1,555,344**  
Mixed Cross-Border Movement

Since the onset of the conflict on 15 April 2023 DTM noted substantial mixed cross-border movements involving both Sudanese and foreign nationals (including returnees). Field teams reported that reported these movements have proved challenging for communities. Security concerns, such as military clashes, or the breakdown in law and order in many areas, as well as steep fuel and transportation costs, and environmental events (such as flooding during the rainy season) impacted options for both domestic and cross-border travel.

## CENTRAL AFRICAN REPUBLIC

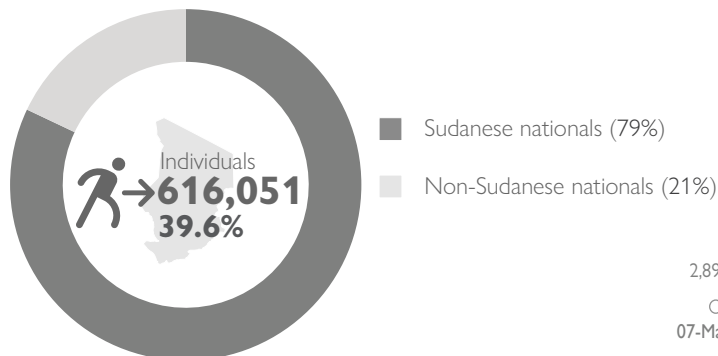


Source: IOM, UNHCR, National Commission for Refugees (CNR)

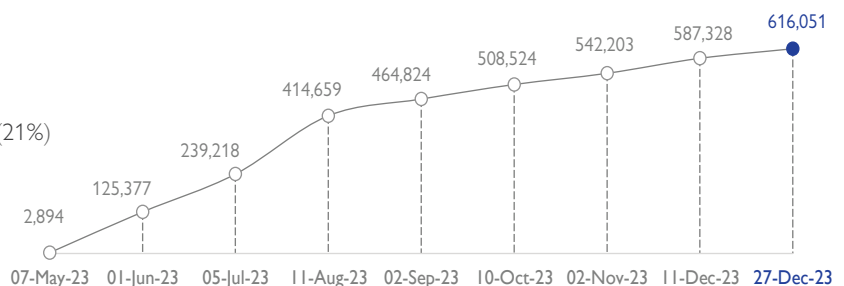


Graph 2: Timeline of Mixed Cross-Border Movement into Central African Republic

## CHAD<sup>2</sup>



Source: IOM, UNHCR

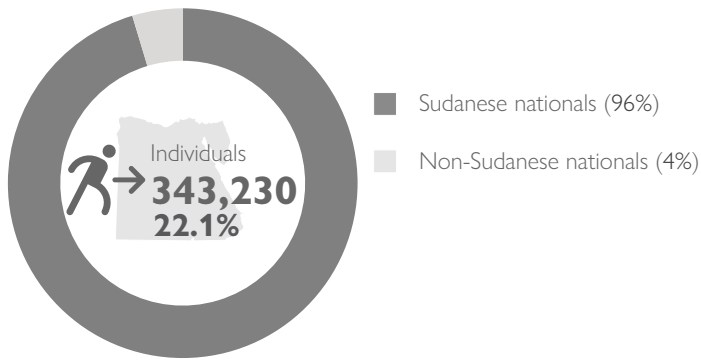


Graph 3: Timeline of Mixed Cross-Border Movement into Chad

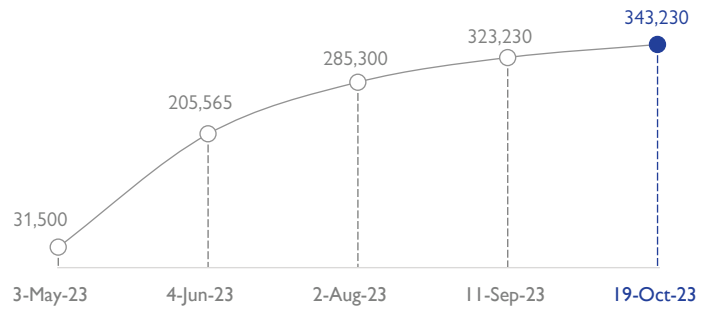
1. This percentage indicates the proportion of foreign nationals observed across all 18 states.

2. For more information on Mixed-Cross Border Movement to Chad, please visit [DTM Chad website](https://dtm.chad).

## EGYPT<sup>1</sup>

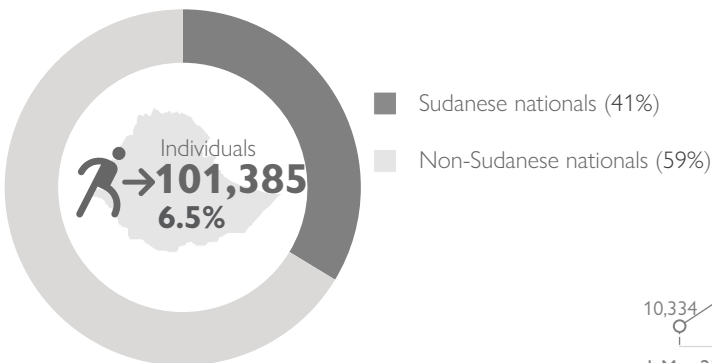


Source: Egypt Ministry of Foreign Affairs

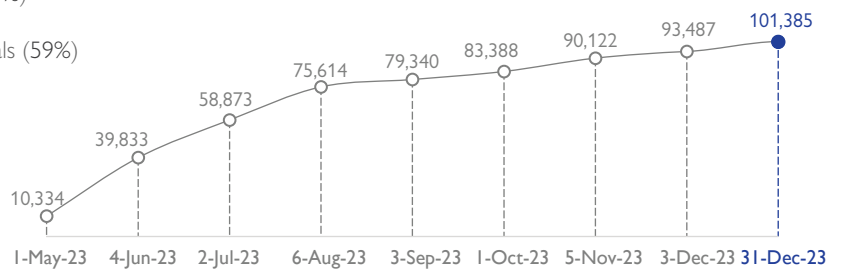


Graph 4: Timeline of Mixed Cross-Border Movement into Egypt

## ETHIOPIA<sup>2</sup>

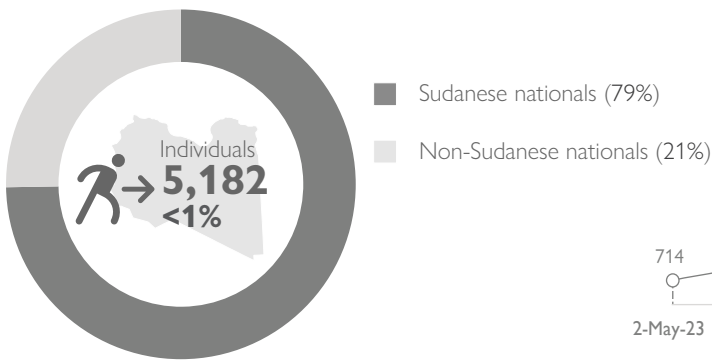


Source: IOM Ethiopia

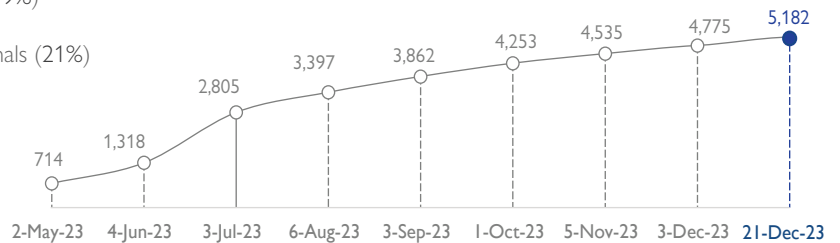


Graph 5: Timeline of Mixed Cross-Border Movement into Ethiopia

## LIBYA

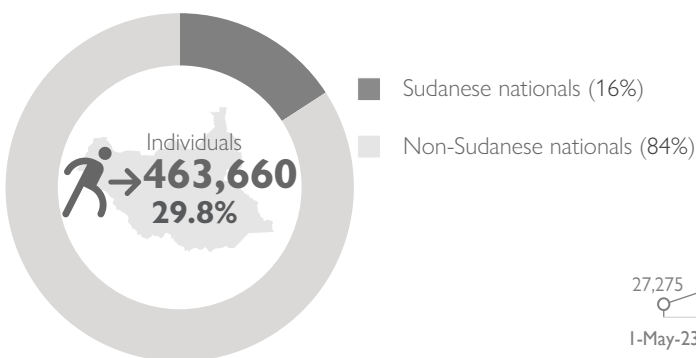


Source: IOM Libya

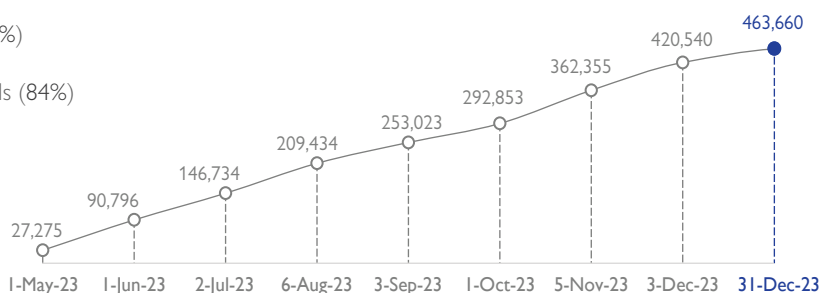


Graph 6: Timeline of Mixed Cross-Border Movement into Libya

## SOUTH SUDAN<sup>3</sup>



Source: IOM, UNHCR



Graph 7: Timeline of Mixed Cross-Border Movement into South Sudan

1. According to the last available update from the Egypt Ministry of Foreign Affairs as of 19 October 2023

2. For more information on Mixed-Cross Border Movement to Ethiopia, please visit [Population Movement from Sudan to the East and Horn of Africa Dashboard](#).

3. For more information on Mixed-Cross Border Movement to South Sudan, please visit [Population Movement from Sudan to South Sudan Dashboard](#).



**USAID**  
FROM THE AMERICAN PEOPLE



Funded By European  
Union Humanitarian Aid

## Disclaimer

All remaining figures for cross-border movement have been provided by DTM country focal points. Data is collected through DTM field teams, partners and national authorities. The data collection is based on DTM's flow monitoring and event tracking methodology.

With the support of:



**IOM**  
UN MIGRATION

REGIONAL  
DATA HUB  
MENA