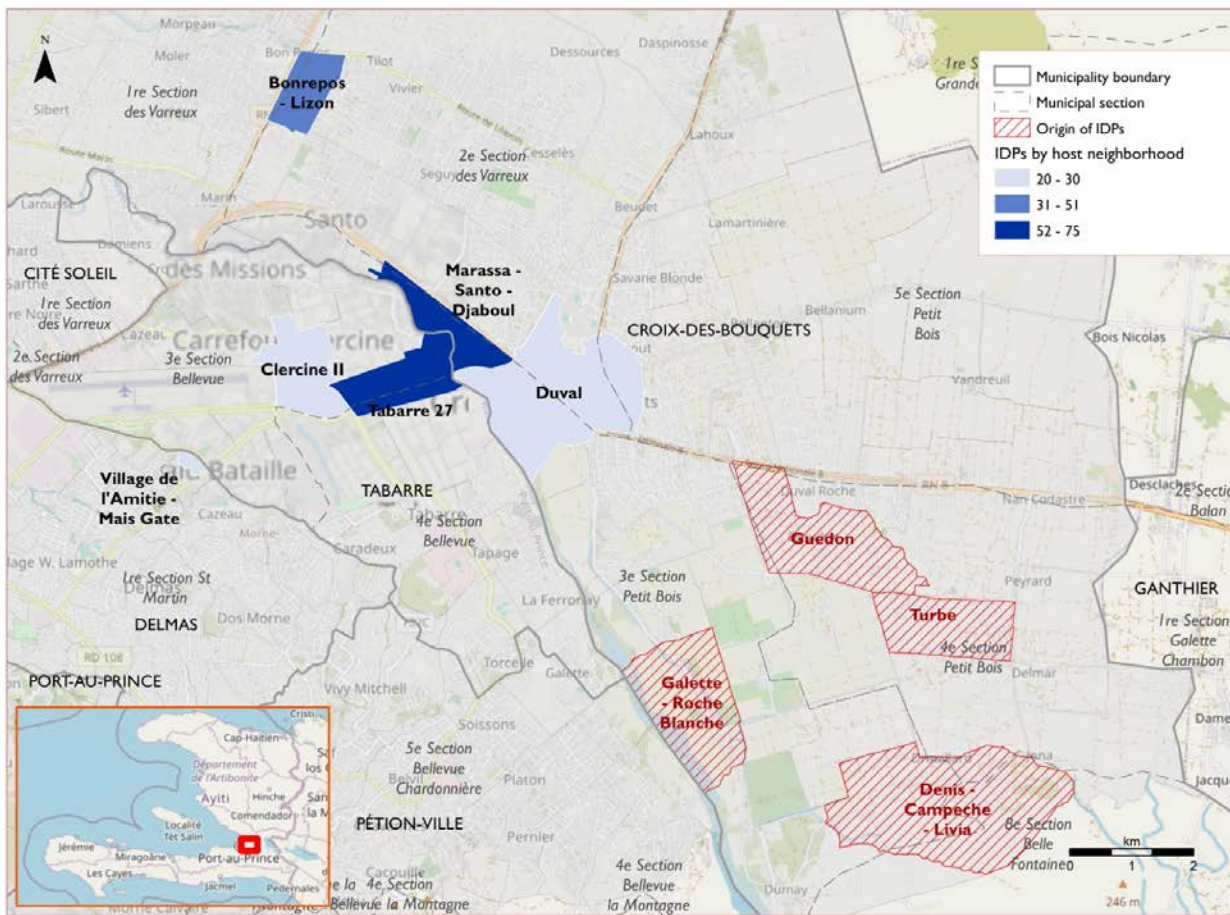


The objective of the Emergency Tracking Tool (ETT) is to collect information on large and sudden population movements as well as security and climatic emergencies. Information is collected through phone interviews with key informants and direct observation.

Origins and host locations of displaced persons



This map is for illustration purposes only. The depiction and use of boundaries, geographic names and related data shown on maps and included in this report are not warranted to be error free nor do they imply judgment on the legal status of any territory, or any endorsement or acceptance of such boundaries by IOM.

Event Summary

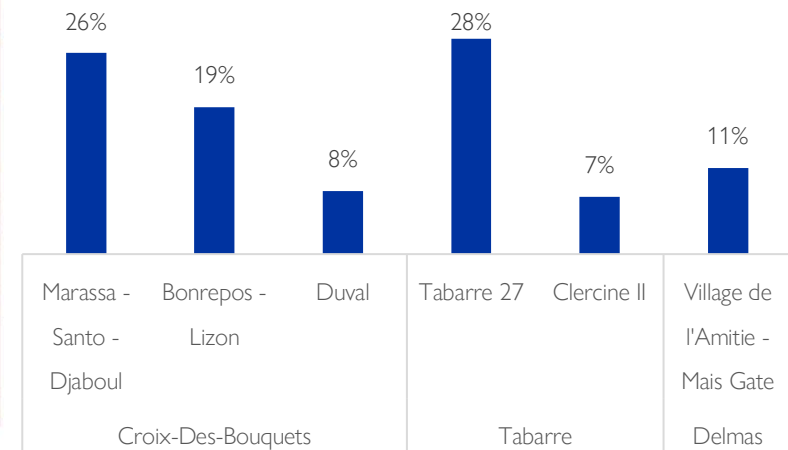
On 2 January 2024, an armed attack took place in the municipality of Croix-Des-Bouquets, affecting several neighborhoods such as Guedon and Turbe, located in the 4th communal section of Petit Bois, as well as the neighborhoods of Galette – Roche Blanche and Denis – Campeche Livia in the 3rd communal section of Petit Bois.

As a result of these events, approximately **67 households, comprising 268 individuals**, were forced to flee their homes towards areas within the same municipality, as well as in Tabarre and Delmas. All these displaced individuals have found refuge with host families.

67 Displaced households

268 Displaced individuals

Host locations of displaced persons (See page 2 for more details on host locations)



Details on host locations of displaced populations

Type of host location	District	Municipality	Municipality section	Neighborhood	Displaced households	Displaced individuals
Host families	Western	Tabarre	3ème Bellevue	Tabarre 27	20	75
Host families	Western	Croix-Des-Bouquets	3èm Section Petit Bois	Marassa - Santo - Djaboul	19	70
Host families	Western	Croix-Des-Bouquets	2ème des Varreux	Bonrepos - Lizon	11	51
Host families	Western	Delmas	1ère Saint martin	Village de l'Amitie - Mais Gate	6	30
Host families	Western	Croix-Des-Bouquets	2ème des Varreux	Duval	6	22
Host families	Western	Tabarre	3ème Bellevue	Clercine II	5	20
					67	268

Methodology

	Assessment conducted in affected areas	
	Assessment conducted through phone interviews with key informants	

Limits

The information presented in this report may not represent all displacements caused by this incident. Indeed, it is possible that some displacements were not detected by key informants. In the case new displacement information caused by this incident is reported, updates can be made accordingly.

Furthermore, it is important to consider that figures are estimates and not data from a counting or registration of displaced households.