

Macomia & Ibo Districts, Cabo Delgado, Mozambique

555 Individuals
arriving at different locations within the reporting period (27-Dec-23 to 03-Jan-24)

144 Households

Trigger
Conflicts/Attacks,
Fear of Attacks

Mode of Transportation
Boat/canoe, Bus



Between 26-28 December, attacks, and fear of attacks by Non-State Armed Groups in Macomia district (Mucojo and Pangane) triggered 555 individual displacements. Reported families have taken shelter across host communities in Macomia and Ibo districts. Following displacements recorded in previously published **Movement Alert Number 87**, assessment teams recorded additional movements of 121 individuals displaced to Ibo and Macomia district between 26 December and 3 January. Cumulatively, an estimated 228 individuals in Macomia and 327 individuals in Ibo between 26 December to 3 January.

Cumulative reports estimate 37 families with 144 individuals displaced to Nanga A Host Community and 22 families with 84 individuals displaced to Nanga B (Macomia), 85 families with 327 individuals displaced to Matemo Island (Ibo). Approximately 68 families with 255 Individuals arriving on Matemo Island intend to proceed to Quirimbo Island within the next weeks.

Amongst recorded arrivals, in Nanga A (Macomia), 66 are children under 18 years and 10 individuals have been identified with vulnerabilities, and in Nanga B (Macomia), 44 are children under 18 years and 3 individuals have been identified with vulnerabilities. In Ibo district 165 are children under 18 years and three individuals have been identified with vulnerabilities in Matemo Island. Owing to pre-vailing security concerns reported by displaced families, intentions for the duration of their stay in host communities remains uncertain.

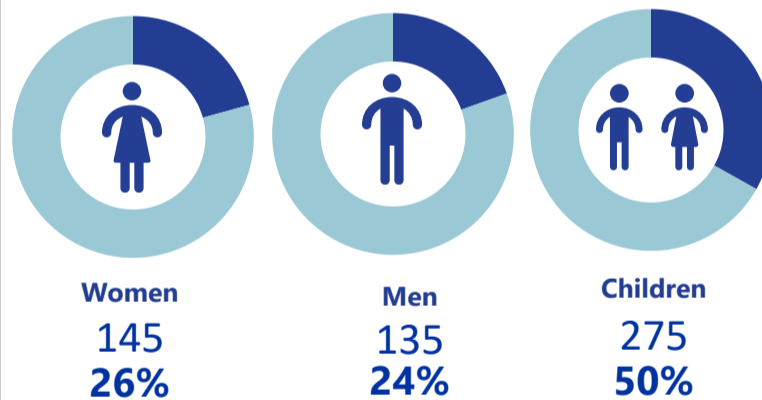
Movements in the region continue to be dynamic within the district. The objective of the Emergency Tracking Tool (ETT) - Movement Alert is to collect information on large and sudden population movements, and to provide support to the humanitarian response partners by disseminating data on IDPs to support effective humanitarian response to the affected population. Information is collected through key informants' interviews or direct observation. This alert provides basic information on displacements, and additional information can be shared upon request.

URGENT NEEDS

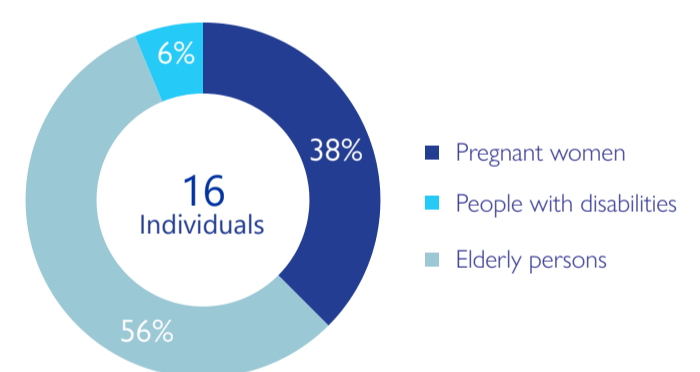


Urgent needs are calculated by weighting the total number of IDP arrivals in each group against the stated priority

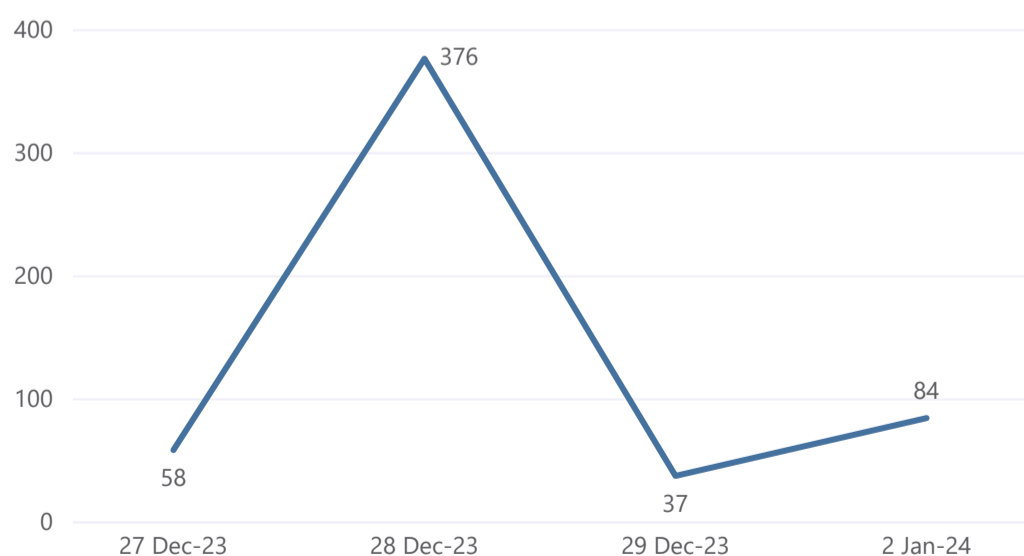
DEMOGRAPHIC PROFILE



VULNERABILITIES



TREND



MOVEMENT FLOW (DEPARTURE AT LOCALITY LEVEL)

