

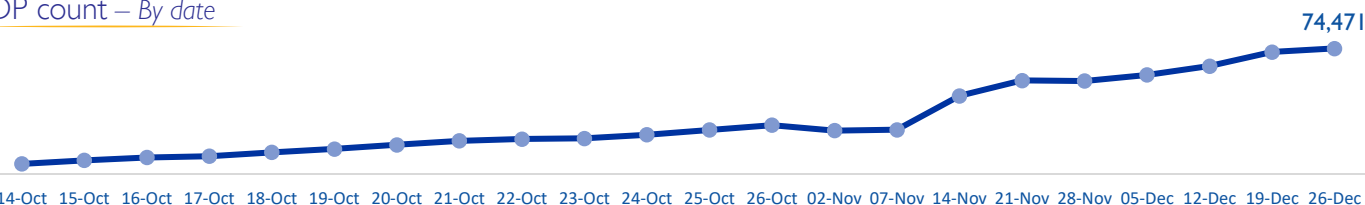
MOBILITY SNAPSHOT – Round 17

Report Production Date: 28 December 2023 | Data collected up till 4 pm on 26 December 2023

Overview

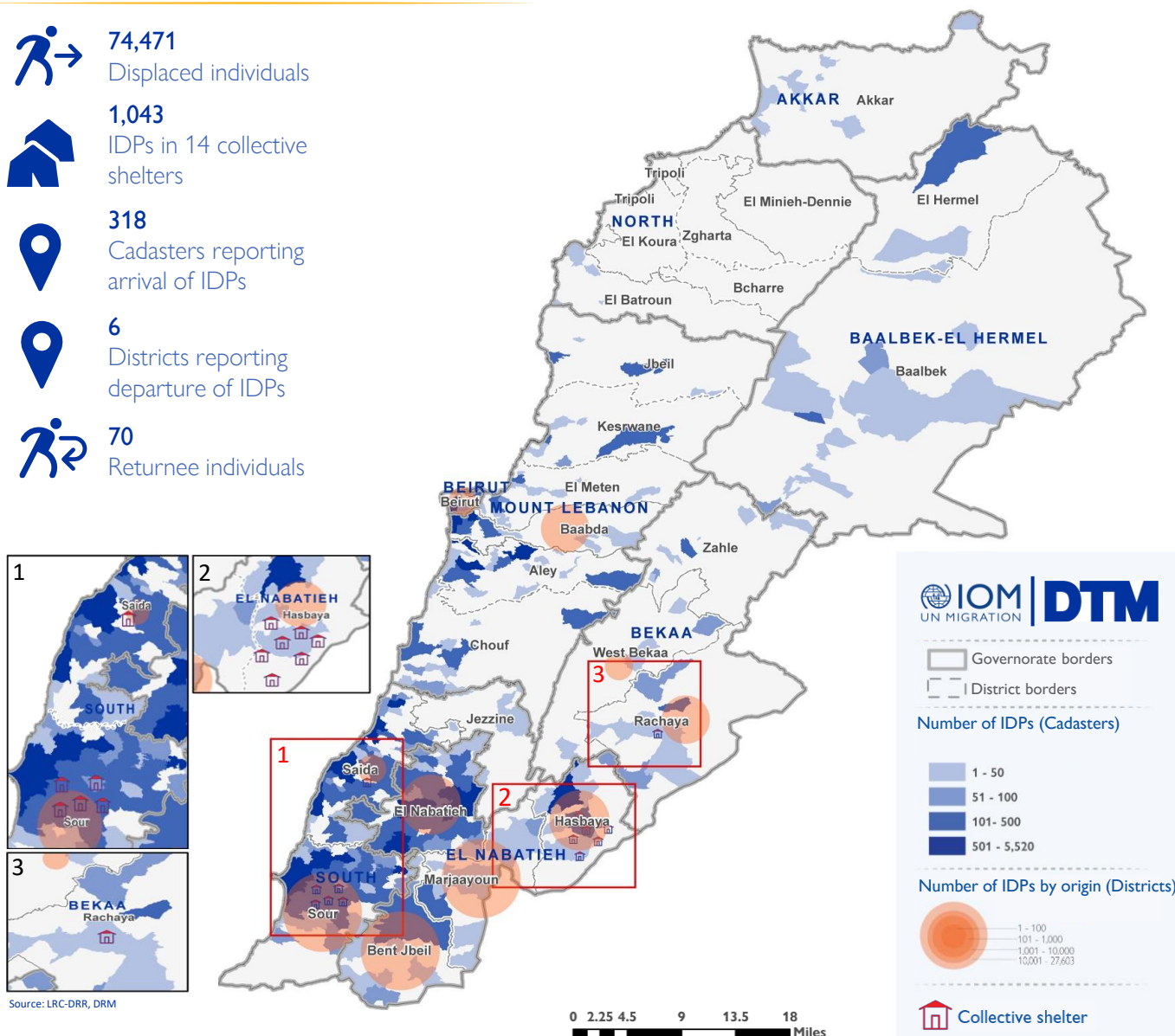
Armed confrontations have been occurring at the Southern Lebanese border since the 8 October 2023. As a consequence, several thousand families from South Lebanon have fled their homes. The International Organization for Migration (IOM) conducts daily monitoring of population movements, with the objective of informing preparedness and response planning. Population numbers for collective shelters and El Nabatieh governorate have been directly provided from the data collected at the level of the emergency operations rooms, supported by the Lebanese Red Cross, (LRC) and the Disaster Risk Management (DRM) Unit.

IDP count – By date



IDPs by cadaster of arrival and district of origin

- 74,471**
Displaced individuals
- 1,043**
IDPs in 14 collective shelters
- 318**
Cadastrers reporting arrival of IDPs
- 6**
Districts reporting departure of IDPs
- 70**
Returnee individuals



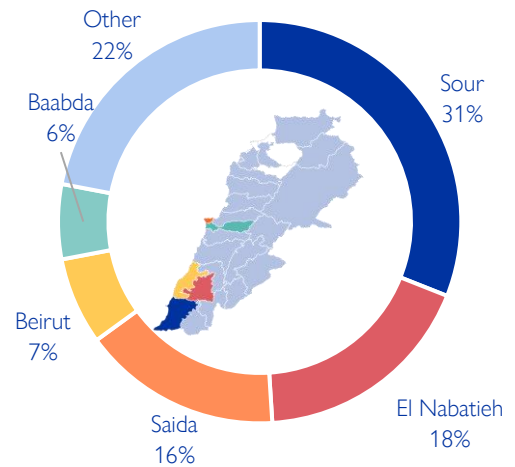
Source: LRC-DRR, DRM

This map is for illustration purposes only. Names and boundaries on this map do not imply official endorsement or acceptance by IOM.

Displacement within Lebanon – By district of arrival

Governorate	District	# of Cadasters	# of Locations	IDPs
South	Sour	52	65	23,150
El Nabatieh	El Nabatieh	40	40	13,146
South	Saida	37	52	12,138
Beirut	Beirut	5	9	5,250
Mount Lebanon	Baabda	9	18	4,668
Mount Lebanon	Aley	14	25	4,214
El Nabatieh	Bent Jbeil	28	28	3,085
Mount Lebanon	Chouf	18	30	2,476
El Nabatieh	Marjaayoun	14	14	1,285
El Nabatieh	Hasbaya	10	10	1,061
Baalbek-El Hermel	Baalbek	18	27	868
Mount Lebanon	Jbeil	5	7	657
Mount Lebanon	El Meten	13	15	590
Mount Lebanon	Kesrwane	9	9	566
Bekaa	Zahle	8	8	310
Bekaa	Rachaya	6	7	290
Bekaa	West Bekaa	4	4	253
Akkar	Akkar	15	17	175
Baalbek-El Hermel	El Hermel	3	5	160
South	Jezzine	6	6	91
North	Zgharta	1	1	30
North	El Batroun	2	2	6
North	El Koura	1	1	2
Total		318	400	74,471

Chart 1: IDPs distribution by district of arrival

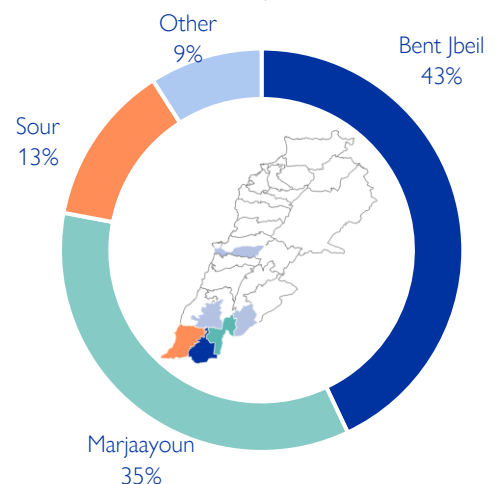


As of 26 December 2023, Lebanon has recorded 74,471 internally displaced persons (IDPs), showing a 3% increase since 19 December. IDPs have sought safety in 400 locations (villages or neighbourhoods) across 318 cadasters throughout Lebanon. Displacement has been observed in 23 out of the 26 districts across all eight governorates. Most of the IDPs (78%) are in five districts out of the total 23 districts hosting IDPs—specifically, Sour, El Nabatieh, Saida, Beirut, and Baabda.

Displacement within Lebanon – By district of departure

Governorate	District	IDPs
El Nabatieh	Bent Jbeil	31,784
El Nabatieh	Marjaayoun	25,887
South	Sour	9,587
El Nabatieh	El Nabatieh	3,827
El Nabatieh	Hasbaya	3,001
Mount Lebanon	Baabda	385
Total		74,471

Chart 2: IDPs distribution by district of departure



The majority of IDPs (90%) originate from three districts. These three districts span along the Southern border of Lebanon. Specifically, 43% are from Bent Jbeil, 35% are from Marjaayoun, and 13% are from Sour. The remaining 9% originate from three different districts, El Nabatieh, Hasbaya, Baabda.

Movement of IDPs from governorate of origin to governorate of displacement

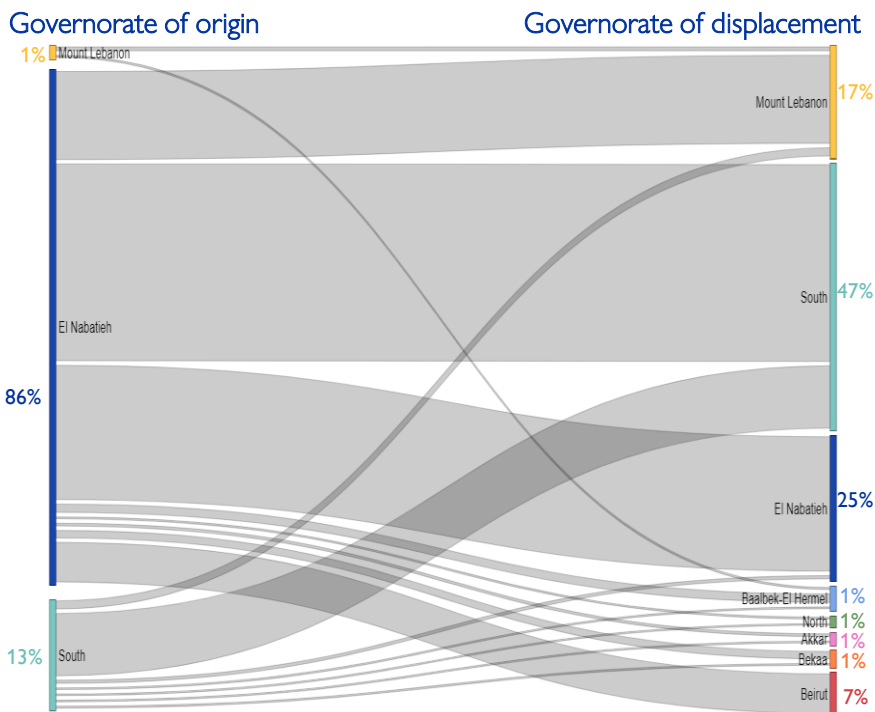
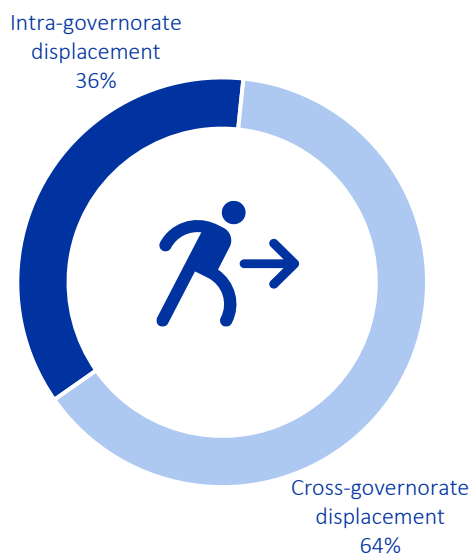


Chart 3: Displacement trends



Overall, 64% of the displacement has occurred outside the boundaries of the IDPs' governorate of origin. While 86% (64,499) of the IDPs originate from El Nabatieh, of this population 72% fled to locations outside the boundaries of El Nabatieh governorate. However, in the South governorate, where 13% (9,587) of IDPs originated, 87% of these IDPs chose to move internally within the governorate.

Arrivals in the last week – (20 December to 26 December 2023)

Governorate	District	# of Cadasters	# of Locations	IDPs
South	Sour	30	33	877
South	Saida	11	11	410
Mount Lebanon	Baabda	2	3	170
Mount Lebanon	Chouf	2	4	90
Beirut	Beirut	1	2	80
Akkar	Akkar	3	4	30
Bekaa	West Bekaa	1	1	27
Mount Lebanon	El Meten	1	1	25
Mount Lebanon	Aley	1	1	15
South	Jezzine	1	1	15
Mount Lebanon	Kesrwane	2	2	11
Bekaa	Zahle	1	1	5
		56	64	1,755

In the past week, 1,755 new displacements have been recorded in 56 cadasters across 12 districts. These individuals might be experiencing displacement for the first time or undergoing secondary movement. These individuals have arrived from Bent Jbeil, El Nabatieh, Marjaayoun, and Sour districts.

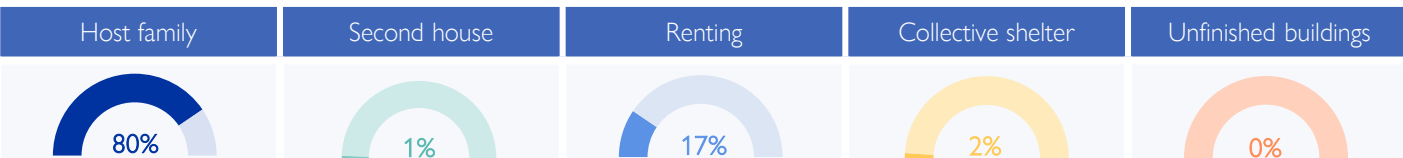
Return within Lebanon – By district *

Governorate	District	# of Cadasters	# of Locations	Returnees
South	Sour	1	1	55
South	Jezzine	1	1	15
Total		2	2	70

As of 26 December, 70 returnees have been identified. This is a reduction of 48% (65) since last week. Returnees have been identified in the districts of Sour and Jezzine. These individuals have returned from Beirut and Sour districts.

* An IDP is identified as a returnee only if they have returned and stayed for over a week in their place of origin.

IDPs distribution by shelter type – By Governorate



Around 80% of IDPs are currently living with host families, while 17% have opted for rental housing. Another 1% have relocated to their secondary residences. Around 2% are housed in 14 collective shelters.

In Sour, there are presently five collective shelters accommodating 712 IDPs; in Hasbaya, there are seven collective shelters hosting 160 IDPs, in Rachaya, there is one collective shelter hosting 39 IDPs and in Saïda, there is one collective shelter hosting 132 IDPs.



* The shelter information for El Nabatieh is derived from Round 12 data. Consequently, there is a 2% decrease in IDPs residing in Collective shelters, accompanied by a corresponding 2% increase in IDPs hosted by Families.

Displacement demographics

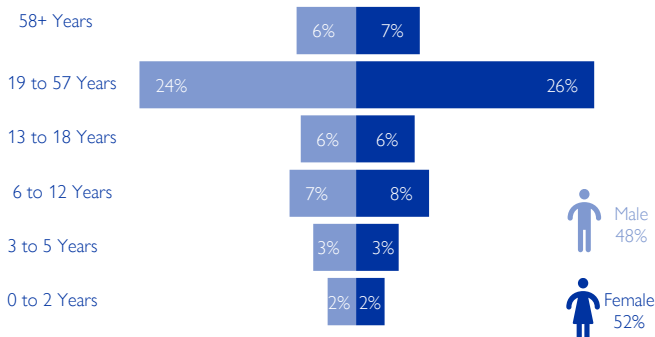


Chart 4: Displacement demographics – Based on Round 14 Data

Note: These figures represent sample data of 2 households per location provided by key informants and do not reflect the entire IDP population in each area.

Methodology

The objective of the Mobility Snapshot is to support the humanitarian community in preparedness and response planning. Multi-layered data is routinely captured through Rounds using a suite of methodological tools designed to track and monitor displacement. These tools are in line with the [DTM Global Methodological Framework](#).

Data is collected nationwide through a combination of face-to-face and remote data collection methods, utilizing a network of over 44 enumerators and 3,600 key informants. These key informants consist of government officials, mukhtars, community representatives, and neighborhood focal points.

The following citation is required when using any data and information included in this information product: "International Organization for Migration (IOM), December 2023. DTM Mobility Snapshot, Round 17. IOM, Lebanon". For more information on terms and conditions of DTM reports and information products, please refer to <https://dtm.iom.int/terms-and-conditions>.