

ETT Report: No. 358 | II — 17 December 2023

NUMBER OF NEW ARRIVALS | NEW ARRIVALS SCREENING BY NUTRITION PARTNERS

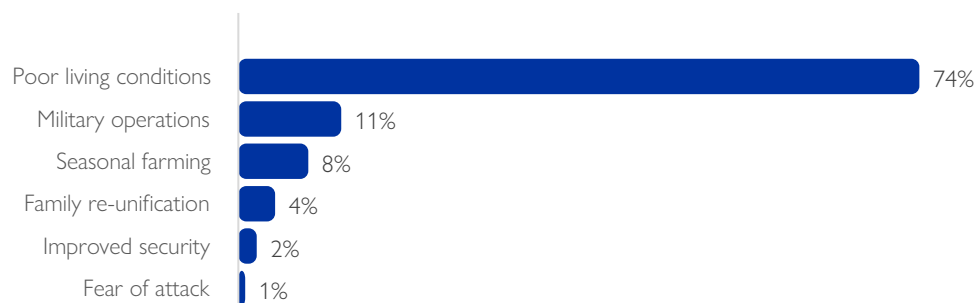


The DTM Emergency Tracking Tool (ETT) is deployed to track and collect information on large and sudden population movements, provide frequent updates on the scale of displacement and quantify the affected population when needed. As a sub-component of the mobility tracking methodology in Nigeria, ETT utilizes direct observations and a broad network of key informants to capture the best estimates of the affected population per location, enabling targeted humanitarian response planning.

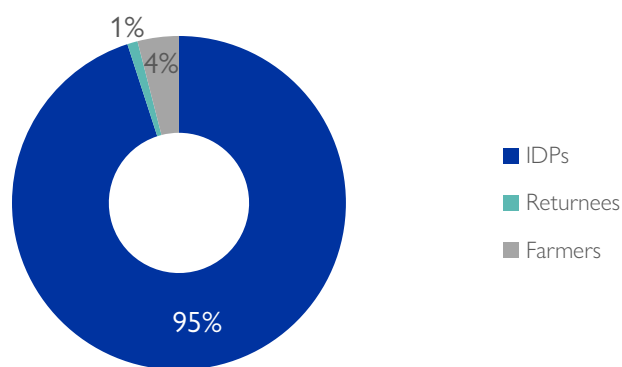
Between 11 and 17 December 2023, a total of 944 new arrivals were recorded at locations in Adamawa and Borno states. The new arrivals were recorded at locations in Bama, Chibok, Dikwa, Gubio, Gwoza, Hawul, Monguno and Ngala Local Government Areas (LGAs) of the most conflict-affected Borno State and in Fufore, Girei, Lamurde and Song LGAs of Adamawa State.

ETT assessments identified the following movement triggers: poor living conditions (702 individuals or 74%), military operation (106 individuals or 11%), seasonal farming (72 individuals or 8%), family re-unification (38 individuals or 4%), improved security (19 individuals or 2%) and fear of attack (7 individuals or 1%).

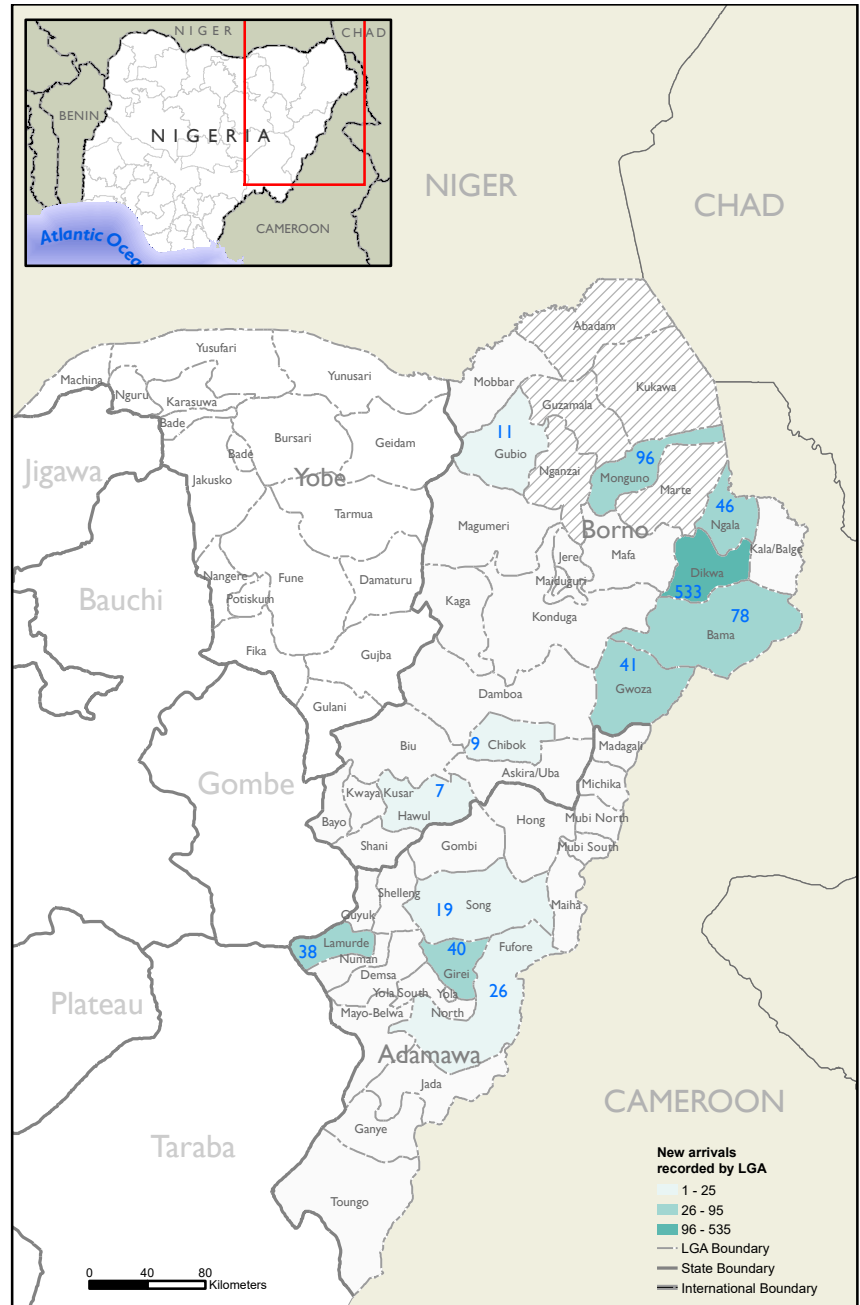
SUMMARY OF THE NEW ARRIVALS



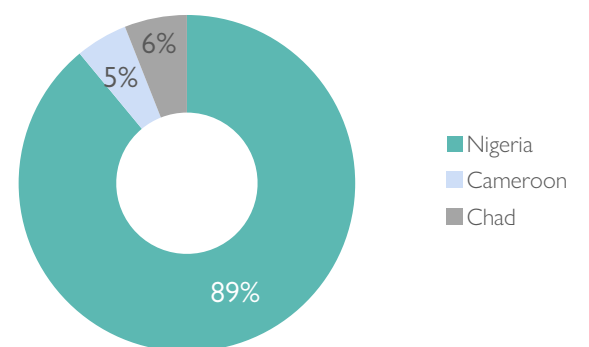
Percentage of individuals by movement trigger



Arriving population



Map of the new arrivals registered[§]



Country of departure of the arriving population

LGAs OF MAJOR NEW ARRIVALS

Dikwa: Five hundred and thirty-three (533) new arrivals were recorded in Dikwa LGA of Borno State. All arrived from hard-to-reach/inaccessible locations (Boboshe, Muliye/Jemuri and Sogoma/Afuye wards) in Dikwa LGA of Borno State. All movements were triggered by poor living conditions.

Monguno: Ninety-six (96) new arrivals were recorded in Monguno LGA of Borno State. Sixty-one per cent were movements from Diffa region in Niger and 39 per cent were movements from Alagarno ward in Kukawa LGA of Borno State. All movements were triggered by poor living conditions.

Bama: Seventy-eight (78) new arrivals were recorded in Bama LGA of Borno State. All arrived from hard-to-reach/inaccessible locations (Gulumba/Jukkuri/Batra, Goniri and Yabiri Kura/Yabiri Gana/Chongolo wards) in Bama LGA of Borno State. All movements were triggered by military operations.

Ngala: Forty-six (46) new arrivals were recorded in Ngala LGA of Borno State. All arrived from Marwa region of Cameroon. All movements were triggered by family re-unification.

Gwoza: Forty-one (41) new arrivals were recorded in Gwoza LGA of Borno State. Ninety-eight per cent were movements from Johode/Chikide/Kughum, Bitu/Izge and Kirawa/Jimini wards in Gwoza LGA and 2 per cent were movemnts from Dipchari/Jere/Dar-Jamal/Kotembe ward in Bama LGA of Borno State. Fifty-nine per cent of movements were triggered by by poor living conditions and 41 per cent were as a result of military operation.

Girei: Forty (40) new arrivals were recorded in Girei LGA of Adamawa State. All arrived from Ribadu ward in Fufore LGA of Adamawa State. All movements were triggered by poor living conditions.

[§]This map is for illustration purposes only. The boundaries and names shown and the designations used on this map do not imply official endorsement or acceptance by International Organization for Migration.

[§]New arrivals registered by LGA.

Table 1. Details of new arrivals by location.

Arrival location			Movement location			Number of individuals
State	LGA	Ward	State	LGA	Ward	
Adamawa	Fufore	Pariya	Adamawa	Song	Song Waje	26
	Girei	Girei I	Adamawa	Fufore	Ribadu	40
	Lamurde	Lafiya	Adamawa	Numan	Imburu	38
	Song	Zumo	Adamawa	Maiha	Maiha Gari	19
Borno	Bama	Shehuri / Hausari / Mairi	Borno	Bama	Goniri	32
					Gulumba / Jukkuri / Batra	13
					Yabiri Kura/Yabiri Gana/Chongolo	33
	Chibok	Chibok Garu	Borno	Maiduguri	Maisandari	9
	Dikwa	Dikwa Central	Borno	Dikwa	Boboshe	274
					Muliye / Jemuri	112
					Sogoma / Afuye	147
	Gubio	Gubio I	Borno	Mobbar	Layi	11
	Gwoza	Gwoza Wakane/Bulabulin	Borno	Gwoza	Bitu / Izge	17
					Johode/Chikide/Kughum	12
					Dipchari / Jere / Dar-Jamal / Kotembe	1
					Johode/Chikide/Kughum	4
	Gwoza	Pulka Bokko	Borno	Gwoza	Kirawa/Jimini	7
	Hawul	Kwajaffa/Hang	Borno	Hawul	Kwajaffa/Hang	7
	Monguno	Monguno	Borno	Kukawa	Alagarno	37
Niger Republic			Diffa	Diffa	59	
Ngala	Ngala	Cameroon	Marwa	Bilgaram	46	

MALNUTRITION SCREENING SUMMARY OF THE NEW ARRIVALS (CHILDREN 6 — 59 MONTHS)

Between 11 and 17 December 2023, an exhaustive nutrition screening using Mid-Upper Arm Circumference (MUAC) and oedema for acute malnutrition was conducted by sector partners for 234 children of 6-59 months. Of the 234 children screened, the MUAC reading indicated that 15 children were recorded in the red category, 28 children in the yellow category and 191 children in the green category. No case of oedema was reported in the six LGAs assessed.

Among the 234 children screened, 71 arrived from neighbouring countries (44 in Mobbar, 18 in Monguno and 9 in Ngala); of all the 71 children measured; 65 were in green, five were in yellow and one in red. All children found with acute malnutrition have been admitted in the treatment programme.

LGA	Breakdown of MUAC reading by category						Total
	Green (≥12.5cm)		Yellow (11.5cm - 12.5cm)		Red (<11.5cm)		
	Inaccessible	Accessible	Inaccessible	Accessible	Inaccessible	Accessible	
Bama	27	0	3	0	2	0	32
Dikwa	0	79	0	19	0	12	110
Gwoza	9	0	0	0	0	0	9
Mobbar	0	44	0	0	0	0	44
Monguno	6	15	0	2	0	1	24
Ngala	0	11	1	3	0	0	15
Total	42	149	4	24	2	13	234

Please note, the data presented above are not surveillance results and should be interpreted with caution.

■ Nourished
 ■ Moderate Acute Malnutrition (MAM)
 ■ Severe Acute Malnutrition (SAM)

LIMITATIONS

The Emergency Tracking Tool (ETT) figures reported are not cumulative of all the affected persons thus far, but rather provide a snapshot of the current displacement situation on the date indicated. The data and information reported on this dashboard are related solely to the movements caused by the above listed triggers between 11 - 17 December.

When quoting, paraphrasing, or in any way using the information mentioned in this report, the source needs to be stated appropriately as follows: "Source: Displacement Tracking Matrix (DTM) of the International Organization for Migration, Nigeria Mission, December 2023".

For more information or to report an alert, please contact: DTM Nigeria: iomnigeriadtm@iom.int : <https://dtm.iom.int/nigeria>

