

ETT Report: No. 354 | 13 — 19 November 2023

NUMBER OF NEW ARRIVALS

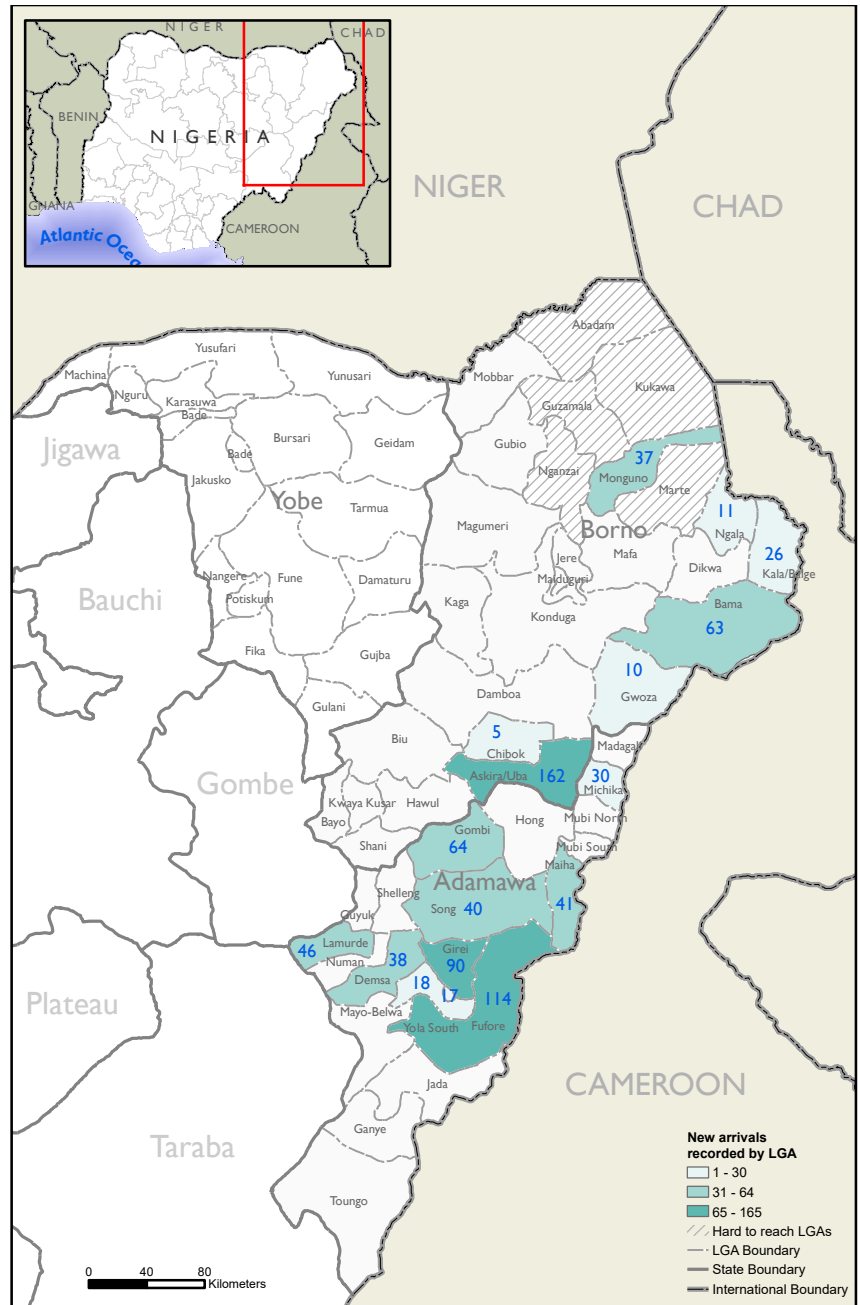
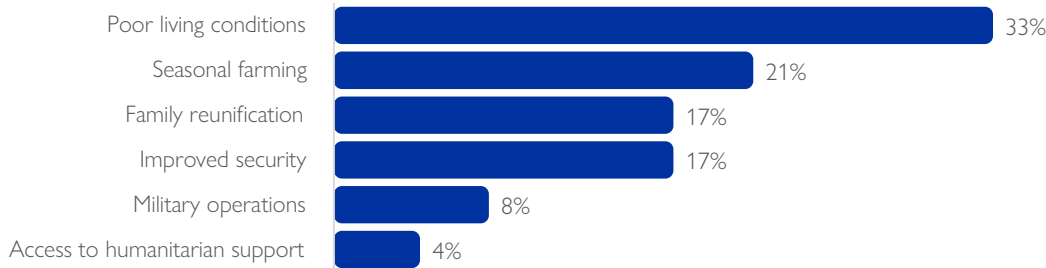
812
Individuals

The DTM Emergency Tracking Tool (ETT) is deployed to track and collect information on large and sudden population movements, provide frequent updates on the scale of displacement and quantify the affected population when needed. As a sub-component of the mobility tracking methodology in Nigeria, ETT utilizes direct observations and a broad network of key informants to capture the best estimates of the affected population per location, enabling targeted humanitarian response planning.

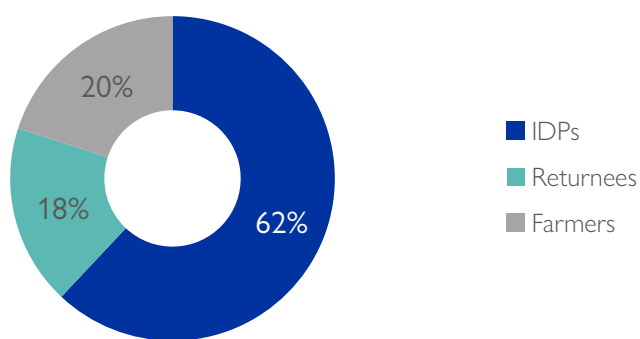
Between 13 and 19 November 2023, a total of 812 new arrivals were recorded at locations in Adamawa and Borno states. The new arrivals were recorded at locations in Askira/Uba, Bama, Chibok, Gwoza, Kala/Balge, Monguno and Ngala Local Government Areas (LGAs) of the most conflict-affected Borno State and in Demsa, Fufore, Girei, Gombi, Lamurde, Maiha, Michika, Song, Yola North and Yola South LGAs of Adamawa State.

ETT assessments identified the following movement triggers: poor living conditions (268 individuals or 33%), seasonal farming (166 individuals or 21%), family reunification (141 individuals or 17%), improved security (139 individuals or 17%), military operations (63 individuals or 8%) and access to humanitarian support (35 individuals or 4%).

SUMMARY OF THE NEW ARRIVALS

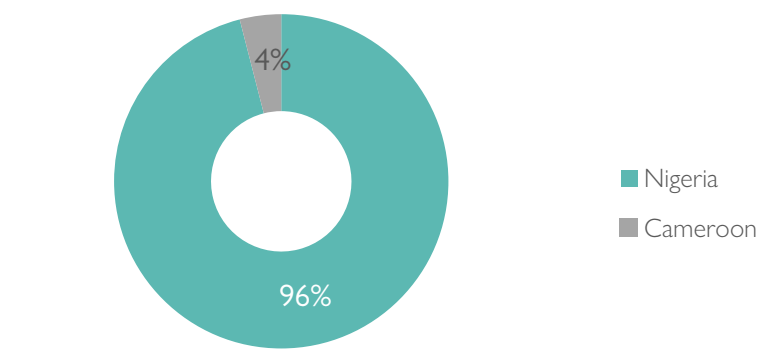


Percentage of individuals by movement trigger



Arriving population

Map of the new arrivals registered[§]



Country of departure of the arriving population

LGAs OF MAJOR NEW ARRIVALS

Askira/Uba: One hundred and sixty-two (162) new arrivals were recorded in Askira/Uba LGA of Borno State. Twenty-four per cent were movements from Hildi ward in Hong LGA, 17 per cent were movements from Modire/Vinikilang ward in Girei LGA, 11 per cent were movements from Sugu ward in Ganye LGA of Adamawa State and 19 per cent were movements from Kawuri ward in Konduga LGA, 16 per cent were movements from Uba ward in Asikar/Uba LGA and 13 per cent were movements from Bilingwi ward in Hawul LGA of Borno State. Fifty-six per cent of movements were triggered by poor living conditions, 28 per cent were triggered by improved security and 16 per cent were as a result of family reunification.

Fufore: One hundred and fourteen (114) new arrivals were recorded in Fufore LGA of Adamawa State. Twenty-three per cent were movements from Wuro Dole ward in Girei LGA, 22 per cent were movements from Song Waje ward in Song LGA, 21 per cent were movements from Belel ward in Maiha LGA, 18 per cent were movements from Gombi South ward in Gombi LGA and 16 per cent were movements from Adarawo ward in Yola South LGA of Adamawa State. Eighty-two per cent of movements were triggered by family reunification and 18 per cent of movements were as a result of seasonal farming.

Girei: Ninety (90) new arrivals were recorded in Girei LGA of Adamawa State. Sixty-eight per cent were movements from Beti and Ribadu wards in Fufore LGA and 32 per cent were movements from Michika I ward in Michika LGA of Adamawa State. Sixty-eight per cent of movements were triggered by seasonal farming and 32 per cent of movements were as a result of poor living conditions.

Gombi: Sixty-four (64) new arrivals were recorded in Gombi LGA of Adamawa State. Seventy per cent were movements from Dadin Kowa ward in Biu LGA of Borno State and 30 per cent were movements from Song Waje ward in Song LGA of Adamawa State. Seventy per cent of movements were triggered by improved security and 30 per cent were as a result of poor living conditions.

[§]The depiction and use of boundaries, geographic names, and related data shown on this map and included in this report are not warranted to be error-free, nor do they imply a judgment on the legal status of any territory or any endorsement or acceptance of such boundaries by IOM.

[§]New arrivals registered by LGA.

Table 1. Details of new arrivals by locations.

Arrival location			Movement location			Number of individuals			
State	LGA	Ward	State	LGA	Ward				
Adamawa	Demsa	Dwam	Adamawa	Numan	Gamadio	38			
	Fufore	Pariya	Adamawa	Girei	Wuro Dole	26			
				Gurin	Adarawo	18			
				Gombi	Gombi South	21			
				Maiha	Belel	24			
	Girei	Dakri	Adamawa	Song	Song Waje	25			
				Michika	Michika I	29			
				Fufore	Beti	30			
	Gombi	Gombi North	Adamawa	Ribadu	Ribadu	31			
				Borno	Dadin Kowa	45			
	Lamurde	Lafiya	Adamawa	Song	Song Waje	19			
	Maiha	Belel	Adamawa	Biu	Dadin Kowa	46			
				Lamurde	Suwa	46			
	Michika	Sorau 'A'	Adamawa	Fufore	Pariya	23			
				Madagali	Babel	18			
	Song	Song Waje	Adamawa	Gombi	Ga'Anda	30			
Madagali				Gombi North	19				
Yola North	Jambutu	Borno	Gombi	Gombi North	19				
Yola South	Adarawo	Adamawa	Madagali	Madagali	21				
Borno	Askira/Uba	Chul/Rumirgo	Adamawa	Gwoza	Guduf Nagadiyo	17			
				Bama	Shehuri/Hausari/Mairi	Borno	Gwoza	Pariya	18
							Ganye	Sugu	18
							Hong	Hildi	39
							Konduga	Kawuri	31
							Askira / Uba	Uba	25
	Chibok	Chibok Garu	Borno	Hawul	Bilingwi	21			
				Gwoza	Gwoza Wakane/Bulabulin	Borno	Girei	Modire/ Vinikilang	28
							Dipchari/Jere/Dar-Jamal/Kotembe	27	
	Gwoza	Pulka/Bokko	Borno	Gwoza	Mbuliya/Goniri/Siraja	26			
					Yabiri Kura/Yabiri Gana/Chongolo	10			
	Kala Balge	Rann A	Borno	Maiduguri	Maisandari	5			
					Cameroon	Marwa	Hambagda/Liman Kara/New Settlement	4	
	Monguno	Monguno	Borno	Kukawa	Johode/Chikide/Kughum	6			
Bolori					4				
Ngala	Ngala	Cameroon	Marwa	Makari	22				
				Alagarno	17				
Ngala	Ngala	Cameroon	Marwa	Kekeno	20				
				Fatakolo	11				

LIMITATIONS

The Emergency Tracking Tool (ETT) figures reported are not cumulative of all the affected persons thus far, but rather provide a snapshot of the current displacement situation on the date indicated. The data and information reported on this dashboard are related solely to the movements caused by the above listed triggers between 13 - 19 November.

When quoting, paraphrasing, or in any way using the information mentioned in this report, the source needs to be stated appropriately as follows: "Source: Displacement Tracking Matrix (DTM) of the International Organization for Migration, Nigeria Mission, November 2023".

For more information or to report an alert, please contact: DTM Nigeria: iomnigeriadtm@iom.int : <https://dtm.iom.int/nigeria>