

OVERVIEW

Registration provides a more in-depth analysis of specific needs by capturing bio data using the Displacement Tracking Matrix (DTM)-developed Biometric Registration and Verification Application (B.R.a.Ve) system, which accurately registers internally displaced persons (IDPs). It provides further information on the individuals, households, vulnerability, and displacement-related triggers for programming and response over time.

As part of the commitment to provide verified figures of IDPs in Benue State in line with the government's plans, The International Organization for Migration DTM, in partnership with UNHCR, Benue State Emergency Management Agency (BSEMA), Nigeria Red Cross Society (NRCSS), National Commission for Refugees, Migrants and Internally Displaced Persons (NCFRMI), National Bureau of Statistics (NBS), National Emergency Management Agency (NEMA), Community Links and Human Empowerment Initiative and the Foundation for Justice Development and Peace (FJDP) launched the biometric registration in Benue State on 22 August 2023 following a three-day training. The nature of displacement in Benue State is a result of the farmers-herders conflict, which has been ongoing for decades.

The biometric registration exercise is to assist the government and humanitarian actors in designing appropriate solutions using a protection centered approach by (1) registering all displaced persons in the selected LGAs in Benue State, (2) referring persons with disabilities, persons with specific needs and health concerns, and (3) verifying numbers of displaced persons in the selected LGAs of Benue State.

Six LGAs have been mapped as locations with IDPs in Benue State based on DTM Round 11 (March 2023). So far, the biometrically registered IDPs have covered the location of Makurdi LGA (five camps and two host community sites), Guma LGA (two camps and two host community sites), Logo LGA (two camps and host community site) Agatu LGA (two host community sites) and in Gwer West (two camps and host community sites). The registration has shown that Guma LGA has the highest number of IDPs, with 33,586 individuals (9,513 households), followed by Agatu with 21,861 individuals (5,641 households), then Kwande with 15,909 individuals (3,225 households). Makurdi had 14,041 individuals (4,150 households), while Logo had 13,633 individuals (3,311 households). The registration which is currently on a break in Gwer West LGA, had 12,721 registered individuals (3,435 households). During the registration, 13,766 individuals were identified with vulnerabilities and specific needs (including but not limited to serious medical illness) and were referred to UNHCR/FJDP for further support. All registered IDPs have received a biometric card with a unique number for easy identification. The registration is an ongoing process as this serves as the third report in the series.

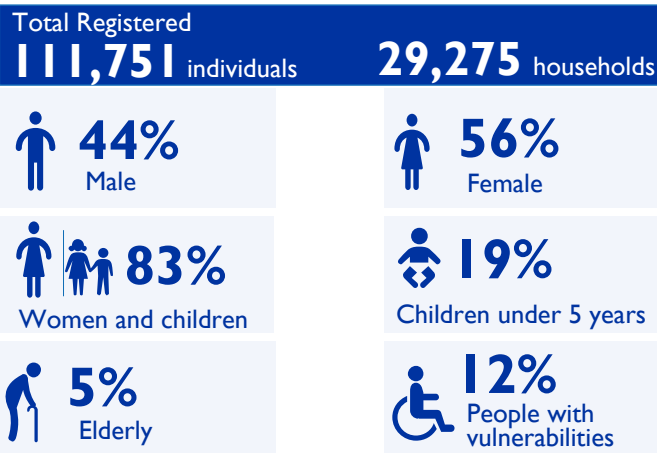


Fig I. Household size distribution

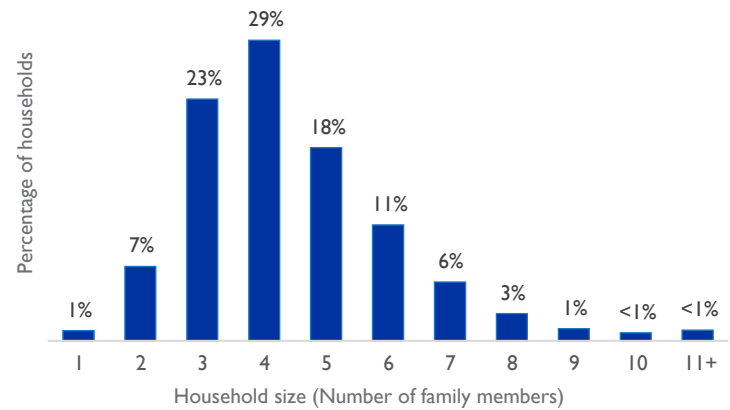


Table I. Registered population by age and gender

State	LGA	Ward	Location Details				Total											
			ssid	Place of registration	location type	HH	Ind	Male	Female	Male				Female				
										0-4y	5-17y	18-59y	60+y	0-4y	5-17y	18-59y	60+y	
Benue	Agatu	Egba	BN_H049	Aila Hc	Camp	1,815	6,713	3,101	3,612	636	1,139	1,188	138	664	982	1,817	149	
		Obagaji	BN_H141	Obagaji Hc	Camp	2,153	8,140	3,567	4,573	731	1,551	1,158	127	766	1,499	2,135	173	
		Usha	BN_S037	Usha Hc	Camp	1,673	7,008	3,290	3,718	686	1,416	1,089	99	677	1,160	1,752	129	
	Guma	Mbabi	BN_S068	Uikpam Idp Hc	Host community	221	840	397	443	70	173	144	10	74	138	201	30	
			BN_S072	Uikpam Idp Camp	Camp	746	3,081	1,459	1,622	319	686	406	48	291	560	654	117	
		Mbawa	BN_H253	Daudu 2 Idp Hc	Host community	1,355	4,705	1,992	2,713	495	944	503	50	467	873	1,211	162	
			BN_S025	Daudu 1 Idp Camp	Camp	768	2,787	1,264	1,523	230	641	352	41	252	488	657	126	
		Nyjev	BN_S253	Daudu Camp 2	Camp	2,110	7,964	3,313	4,651	788	1,919	532	74	814	1,686	1,789	362	
			BN_S064	Ortese Camp	Camp	3,501	11,516	4,588	6,928	1,184	2,434	846	124	1,182	2,212	3,017	517	
	Gwer West	Ortese Host Community	BN_S065	Ortese Host Community	Host community	812	2,693	1,094	1,599	280	508	273	33	253	515	718	113	
			BN_S022	Naka Idp Camp	Camp	504	1,988	856	1,132	202	484	136	34	164	465	364	139	
		Ikyaghev	BN_S023	Naka Idp Hc	Camp	1,126	4,350	1,904	2,446	377	997	423	107	384	888	955	219	
		Mbachohon	BN_S067	Agagbe Idp Camp	Camp	806	2,959	1,292	1,667	316	585	318	73	310	498	733	126	
			BN_S068	Agagbe Idp Hc	Camp	999	3,424	1,535	1,889	380	630	443	82	333	587	856	113	
	Kwande	Mbalkyor	BN_H014	Nyihemba	Host community	1,068	4,930	2,387	2,543	410	1,079	792	106	389	946	1,104	104	
		Yaav	BN_H014	Jato-Aka	Host community	2,157	10,979	5,290	5,688	889	2,477	1,584	340	831	2,212	2,394	251	
		Mbagber	BN_S009	Anyiin Hc	Host community	973	4,255	2,008	2,247	318	1,042	549	99	312	928	899	108	
	Logo	Mbayan	BN_S009	Nkst Pri. Sch. Anyiin Camp	Camp	1,094	4,351	2,048	2,302	374	964	600	110	353	832	989	128	
			BN_S014	Lgea Pri. Sch Ugba	Camp	366	1,499	628	871	116	403	96	13	113	372	299	87	
		Agan	BN_S015	Ugba Hc	Host community	878	3,528	1,540	1,988	309	829	369	33	289	803	805	91	
	Makurdi	North Bank II	BN_S021	Abagena Camp	Camp	624	1,778	718	1,060	179	365	151	23	187	307	493	73	
			BN_H020	Nepa Quarters Hc	Host community	171	578	220	358	62	113	40	5	71	112	160	15	
			BN_H072	Baka Camp Hc Idps	Camp	424	1,351	507	844	118	268	109	12	146	275	384	39	
			BN_H073	Asase Hc Idps	Host community	419	1,863	784	1,079	212	426	131	15	186	454	411	28	
			BN_S020	Nepa Quarters	Camp	436	1,629	662	967	154	315	180	13	178	325	429	35	
			BN_S072	Baka Camp	Camp	1,144	3,698	1,444	2,254	391	736	294	23	334	746	1,013	161	
			BN_S073	Ichwa	Camp	932	3,144	1,253	1,891	325	640	252	36	279	667	758	187	
	Grand Total						29,275	111,751	49,141	62,608	10,551	23,764	12,958	1,868	10,299	21,530	26,997	3,782

DISCLAIMER: The figures presented in this report only show progress for the biometrically registered IDPs in selected LGAs in Benue State as of 20 December 2023. The registration is ongoing (though on break and may continue soon), and data will keep changing until the end of the exercise.

Map showing number of IDP individuals registered by LGA

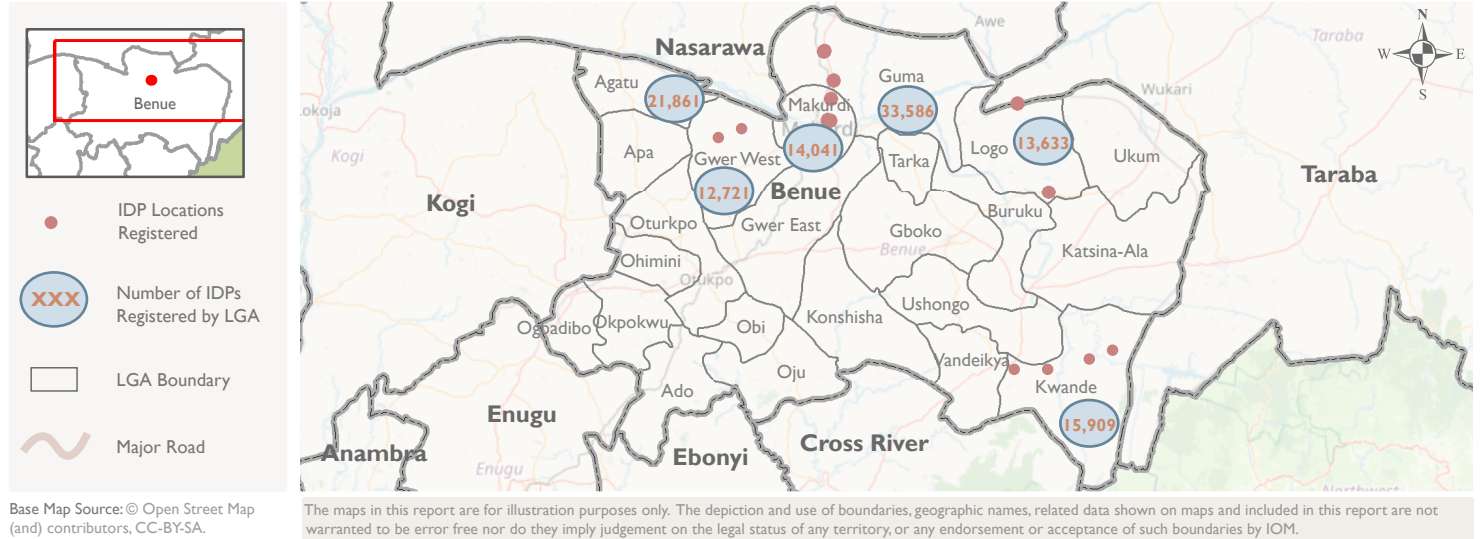


Fig 2. Percentage of vulnerability

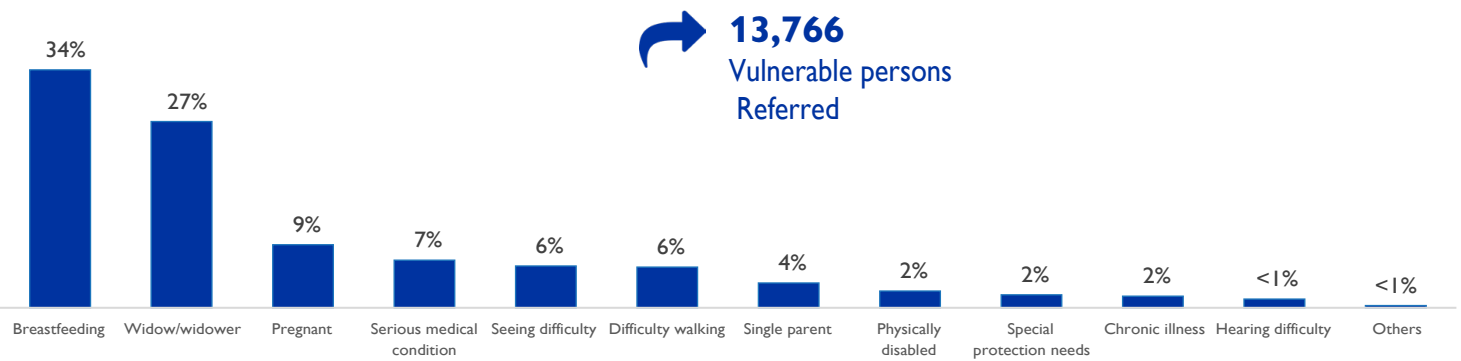


PHOTO GALLERY



Sensitization activity in Agagbe IDP camp in Mbachohon Ward, Gwer West LGA @IOM-DTM/2023



Biometric registration in Uikpam IDP camp, Mbabai Ward, Guma LGA @IOM-DTM/2023



Biometric capturing of IDPs in Agagbe IDP camp, Mbachohon Ward, Gwer West LGA @IOM-DTM/2023



An interview by the team in Gbajimba IDP camp2, Nzorov Ward, Guma LGA @IOM-DTM/2023