

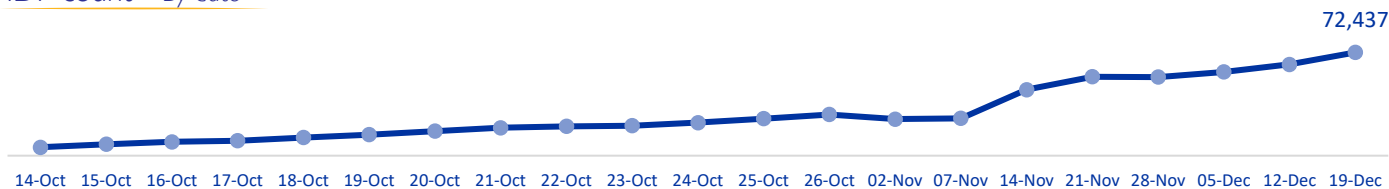
MOBILITY SNAPSHOT – Round 16

Report Production Date: 21 December 2023 | Data collected up till 4 pm on 19 December 2023

Overview

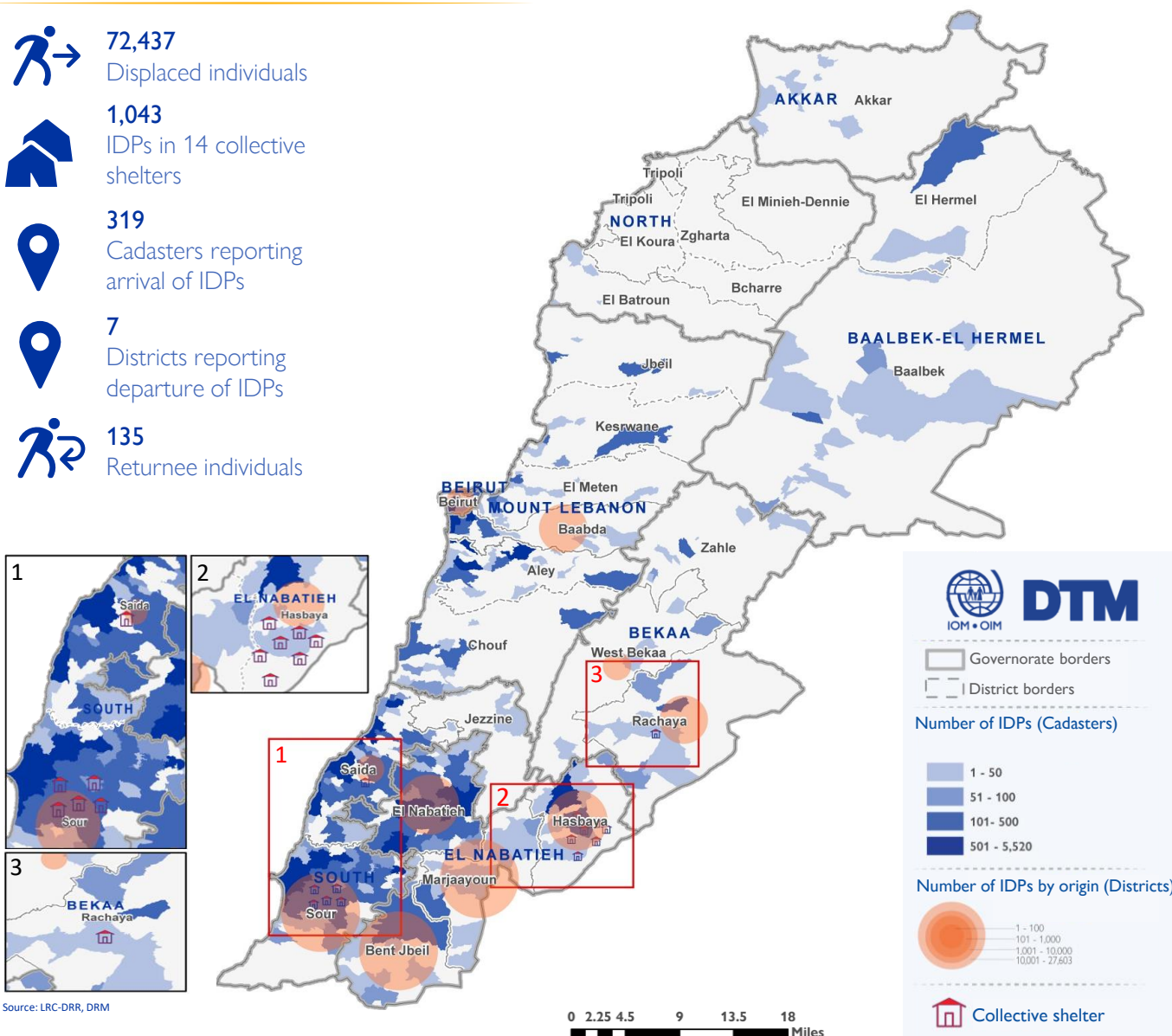
Armed confrontations have been occurring at the Southern Lebanese border since the 8 October 2023. As a consequence, several thousand families from South Lebanon have fled their homes. The International Organization for Migration (IOM) conducts daily monitoring of population movements, with the objective of informing preparedness and response planning. Population numbers for collective shelters and El Nabatieh governorate have been directly provided from the data collected at the level of the emergency operations rooms, supported by the Lebanese Red Cross, (LRC) and the Disaster Risk Management (DRM) Unit.

IDP count – By date



IDPs by cadaster of arrival and district of origin

- 72,437**
Displaced individuals
- 1,043**
IDPs in 14 collective shelters
- 319**
Cadastrers reporting arrival of IDPs
- 7**
Districts reporting departure of IDPs
- 135**
Returnee individuals



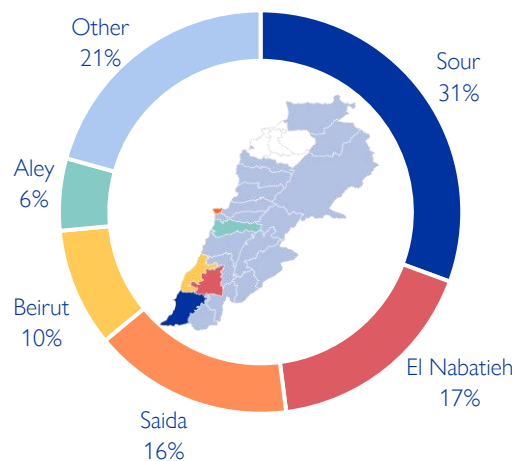
Source: LRC-DRR, DRM

This map is for illustration purposes only. Names and boundaries on this map do not imply official endorsement or acceptance by IOM.

Displacement within Lebanon – By district of arrival

Governorate	District	# of Cadasters	# of Locations	IDPs
South	Sour	52	65	22,167
El Nabatieh	El Nabatieh	41	41	12,578
South	Saida	36	51	11,618
Beirut	Beirut	5	10	6,890
Mount Lebanon	Aley	15	26	4,189
El Nabatieh	Bent Jbeil	28	28	2,895
Mount Lebanon	Baabda	10	18	2,649
Mount Lebanon	Chouf	18	30	2,386
El Nabatieh	Marjaayoun	15	15	1,154
Akkar	Akkar	13	13	1,112
El Nabatieh	Hasbaya	10	10	956
Baalbek-El Hermel	Baalbek	18	27	918
Mount Lebanon	Jbeil	5	7	647
Mount Lebanon	El Meten	13	15	565
Mount Lebanon	Kesrwane	7	7	548
Bekaa	Rachaya	7	8	369
Bekaa	Zahle	8	8	305
Bekaa	West Bekaa	4	4	226
Baalbek-El Hermel	El Hermel	3	5	160
South	Jezzine	7	7	79
North	El Batroun	4	4	26
Total		319	399	72,437

Chart 1: IDPs distribution by district of arrival

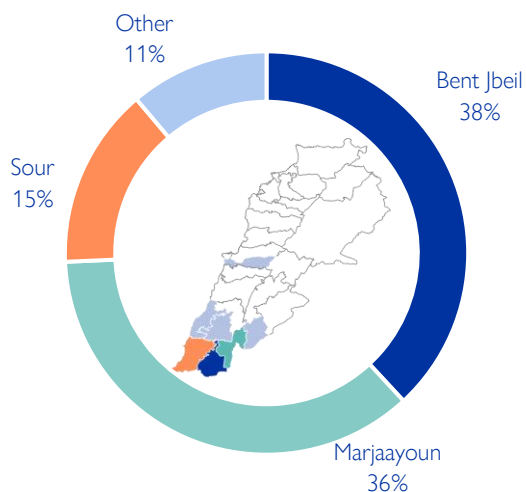


As of 19 December 2023, Lebanon has recorded 72,437 internally displaced persons (IDPs), showing a 9% increase since 12 December. IDPs have sought safety in 399 locations (villages or neighbourhoods) across 319 cadasters throughout Lebanon. Displacement has been observed in 21 out of the 26 districts across all eight governorates. Most of the IDPs (79%) are in five districts out of the total 21 districts hosting IDPs—specifically, Sour, El Nabatieh, Saida, Beirut, and Aley.

Displacement within Lebanon – By district of departure

Governorate	District	IDPs
El Nabatieh	Bent Jbeil	27,603
El Nabatieh	Marjaayoun	26,222
South	Sour	10,521
El Nabatieh	El Nabatieh	4,742
El Nabatieh	Hasbaya	2,979
Mount Lebanon	Baabda	360
South	Saida	10
Total		72,437

Chart 2: IDPs distribution by district of departure



The majority of IDPs (89%) originate from three districts. These three districts span along the Southern border of Lebanon. Specifically, 38% are from Bent Jbeil, 36% are from Marjaayoun, and 15% are from Sour. The remaining 11% originate from four different districts, ElNabatieh, Hasbaya, Baabda and Saida.

Movement of IDPs from governorate of origin to governorate of displacement

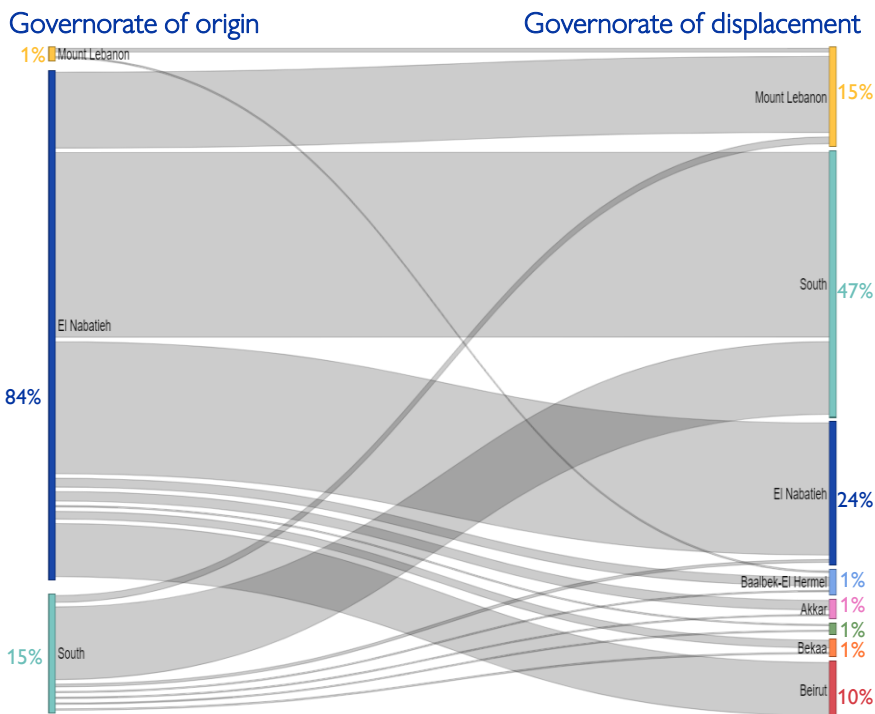
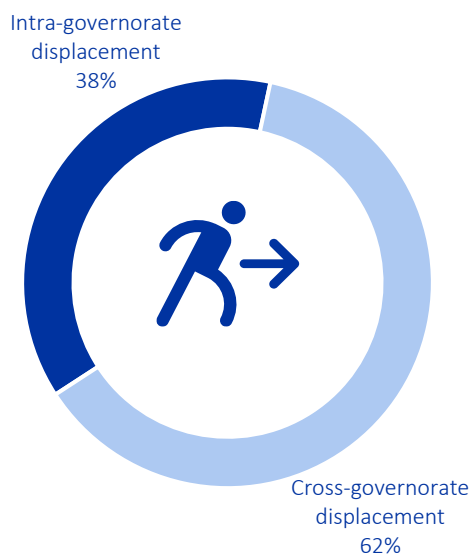


Chart 3: IDPs distribution by displacement pattern



Overall, 62% of the displacement has occurred outside the boundaries of the IDPs' governorate of origin. While 84% (61,546) of the IDPs originate from El Nabatieh, of this population 72% fled to locations outside the boundaries of El Nabatieh governorate. However, in the South governorate, where 15% (10,531) of IDPs originated, 90% of these IDPs chose to move internally within the governorate.

Arrivals in the last week – (13 December to 19 December 2023)

Governorate	District	# of Cadasters	# of Locations	IDPs
South	Sour	33	38	2,440
South	Saida	14	17	1,120
Akkar	Akkar	2	2	990
Mount Lebanon	Chouf	3	4	747
Mount Lebanon	Baabda	1	3	320
Mount Lebanon	Aley	2	4	160
Bekaa	West Bekaa	1	1	100
Mount Lebanon	Jbeil	1	1	75
Baalbek-EI Hermel	Baalbek	3	3	73
Mount Lebanon	El Meten	2	2	35
South	Jezzine	3	4	35
Total		65	79	6,095

In the past week, 6,095 new IDPs have been recorded in 65 cadasters across 11 districts. These individuals might be experiencing displacement for the first time or undergoing secondary movement. These individuals have arrived from Bent Jbeil, Hasbaya, Marjaayoun, Saida and Sour districts.

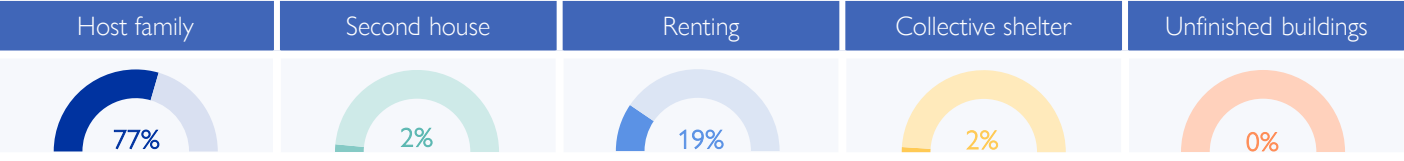
Return within Lebanon – By district *

Governorate	District	# of Cadasters	# of Locations	Returnees
South	Sour	1	1	125
South	Jezzine	1	1	10
Total		2	2	135

As of 19 December, 135 returnees have been identified. This is a reduction of 68% (285) since last week. Returnees have been identified in the districts of Sour and Jezzine. These individuals have returned from Beirut district.

* An IDP is identified as a returnee only if they have returned and stayed for over a week in their place of origin.

IDPs distribution by shelter type – By Governorate



Around 77% of IDPs are currently living with host families, while 19% have opted for rental housing. Another 2% have relocated to their secondary residences. Around 2% are housed in 14 collective shelters.

In Sour, there are presently five collective shelters accommodating 723 IDPs; in Hasbaya, there are seven collective shelters hosting 150 IDPs, in Rachaya, there is one collective shelter hosting 38 IDPs and in Saïda, there is one collective shelter hosting 132 IDPs.



* The shelter information for El Nabatieh is derived from Round 12 data. Consequently, there is a 2% decrease in IDPs residing in Collective shelters, accompanied by a corresponding 2% increase in IDPs hosted by Families.

Displacement demographics

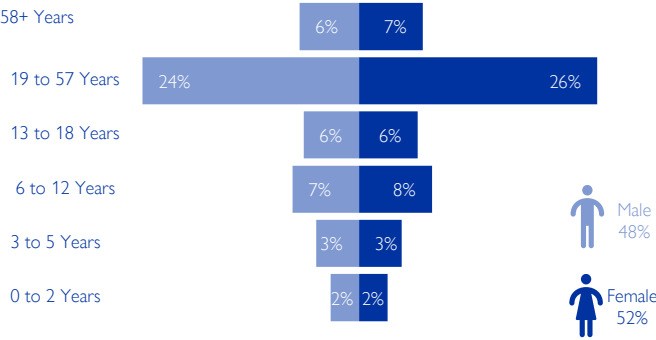


Chart 4: Displacement demographics

Note: These figures represent sample data of 2 households per location provided by key informants and do not reflect the entire IDP population in each area.

Methodology

The objective of the Mobility Snapshot is to support the humanitarian community in preparedness and response planning. Multi-layered data is routinely captured through Rounds using a suite of methodological tools designed to track and monitor displacement. These tools are in line with the [DTM Global Methodological Framework](#).

Data is collected nationwide through a combination of face-to-face and remote data collection methods, utilizing a network of over 44 enumerators and 3,600 key informants. These key informants consist of government officials, mukhtars, community representatives, and neighborhood focal points.

The following citation is required when using any data and information included in this information product: "International Organization for Migration (IOM), December 2023. DTM Mobility Snapshot, Round 16. IOM, Lebanon". For more information on terms and conditions of DTM reports and information products, please refer to <https://dtm.iom.int/terms-and-conditions>.