

## OVERVIEW

Registration provides a more in-depth analysis of specific needs by capturing bio data using the Displacement Tracking Matrix (DTM)-developed Biometric Registration and Verification Application (B.R.a.Ve) system, which accurately registers internally displaced persons (IDPs). It provides further information on the individuals, households, vulnerability, and displacement-related triggers for programming and response over time.

As part of the commitment to provide verified figures of IDPs in Benue State in line with the government's plans, International Organization for Migration DTM, in partnership with UNHCR, Benue State Emergency Management Agency (BSEMA), Nigeria Red Cross Society (NRCS), National Commission for Refugees, Migrants and Internally Displaced Persons (NCFRMI), National Bureau of Statistics (NBS), National Emergency Management Agency (NEMA), Community Links and Human Empowerment Initiative and the Foundation for Justice Development and Peace (FJDP) launched the biometric registration in Benue State on 22 August 2023 following a three-day training. The nature of displacement in Benue State is a result of the farmers-herders conflict which has been ongoing for decades.

The biometric registration exercise is to assist the government and humanitarian actors design appropriate solutions using a protection centered approach by (1) registering all displaced persons in the selected LGAs in Benue State, (2) referring persons with disabilities, persons with specific needs and health concerns, and (3) verifying numbers of displaced persons in the selected LGAs of Benue State.

Six LGAs have been mapped as locations with IDPs in Benue State based on DTM Round 11 (March 2023). So far, the biometrically registered IDPs have covered the location of Makurdi LGA (5 camps and 2 host community sites), Guma LGA (2 camps and two host community sites), Logo LGA (2 camps and 2 host community sites), Kwande (1 camp and 1 host community site) and currently ongoing in Agatu LGA (2 host community sites). The registration has shown that Guma LGA has the highest number of IDPs, with 23,283 individuals (6,750 households), followed by Kwande with 15,934 individuals (3,232 households), then Makurdi with 14,041 individuals (4,150 households). Logo had 13,632 individuals (3,314 householdss). The registration is ongoing in Agatu LGA, with 21,895 registered individuals (5,649 households). During the registration, 10,191 individuals were identified with vulnerabilities and specific needs (including but not limited to serious medical illness) have been referred to UNHCR/FJDP for further support. All registered IDPs have received a biometric cards with a unique number for easy identification. The registration is an ongoing process.

**Total Registered**  
**88,800** individuals **23,095** households

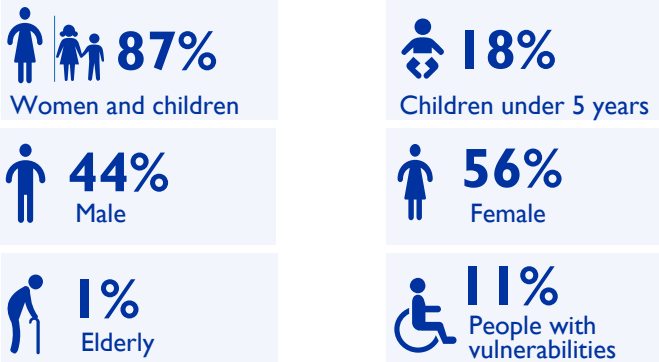


Fig I. Household size distribution

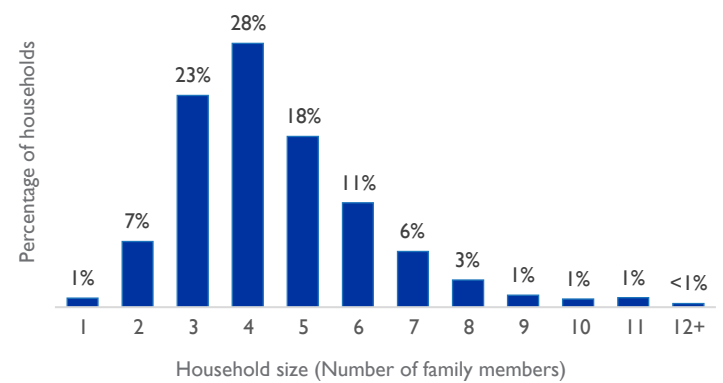


Table I. Registered population by age and gender

State	LGA	Ward	Location Details			Total				Male				Female				
			ssid	Place of registration	location type	HH	Ind	Male	Female	0-4y	5-17y	18-59y	60+y	0-4y	5-17y	18-59y	60+y	
Benue	Agatu	Egba	BN_H049	Aila Hc	Host Community	1,819	6,728	3,109	3,619	638	1,141	1,192	138	665	984	1,821	149	
		Obagaji	BN_H141	Obagaji Hc	Host Community	2,153	8,140	3,567	4,573	731	1,551	1,158	127	766	1,499	2,135	173	
		Usha	BN_S037	Usha Hc	Camp	1,677	7,027	3,300	3,727	690	1,420	1,091	99	677	1,163	1,757	130	
	Guma	Mbawa	BN_H253	Daudu 2 Idp Hc	Host Community	327	1,110	492	618	128	210	133	21	98	212	274	34	
			BN_S253	Daudu Camp 2	Camp	2,110	7,964	3,313	4,651	788	1,919	532	74	814	1,686	1,789	362	
		Nyiev	BN_S064	Ortese Camp	Camp	3,501	11,516	4,588	6,928	1,184	2,434	846	124	1,182	2,212	3,017	517	
			BN_S064	Ortese Host Community	Host Community	812	2,693	1,094	1,599	280	508	273	33	253	515	718	113	
	Kwande	Mbaikyor	BN_H014	Nyihemba	Host Community	1,073	4,949	2,397	2,552	411	1,086	794	106	389	951	1,108	104	
		Yaav	BN_H014	Jato-Aka	Host Community	2,159	10,985	5,292	5,692	889	2,478	1,585	340	834	2,212	2,395	251	
	Logo	Mbagber	BN_S009	Anyiin Hc	Host Community	974	4,259	2,010	2,249	318	1,044	549	99	312	929	900	108	
			BN_S009	Nkst Pri. Sch. Anyiin Camp	Camp	1,096	4,361	2,054	2,306	376	966	602	110	354	833	991	128	
		Mbayam	BN_S014	Lgea Pri. Sch Ugba	Camp	366	1,499	628	871	116	403	96	13	113	372	299	87	
			BN_S014	Ugba Hc	Host Community	878	3,528	1,540	1,988	309	829	369	33	289	803	805	91	
			BN_S021	Abagena Camp	Camp	624	1,778	718	1,060	179	365	151	23	187	307	493	73	
		Makurdi	North Bank li	BN_H020	Nepa Quarters Hc	Host Community	171	578	220	358	62	113	40	5	71	112	160	15
				BN_H072	Baka Camp Hc Idps	Camp	424	1,351	507	844	118	268	109	12	146	275	384	39
	BN_H073			Asase Hc Idps	Host Community	419	1,863	784	1,079	212	426	131	15	186	454	411	28	
	BN_S020			Nepa Quarters	Camp	436	1,629	662	967	154	315	180	13	178	325	429	35	
	BN_S072			Baka Camp	Camp	1,144	3,698	1,444	2,254	391	736	294	23	334	746	1,013	161	
			BN_S073	Ichwa	Camp	932	3,144	1,253	1,891	325	640	252	36	279	667	758	187	
	Grand Total						23,095	88,800	38,972	49,826	8,299	18,852	10,377	1,444	8,127	17,257	21,657	2,785

**DISCLAIMER:** The figures presented in this report only show progress for the biometrically registered IDPs in selected LGAs in Benue State as of 30 Nov 2023. The registration is ongoing, and data will keep changing until the end of the exercise.

