

OVERVIEW

Rising water levels upstream from the Akosombo Dam, due primarily to heavy rainfall, caused the Volta River Authority to commence the spillage of excess water on 15 September 2023. The spillage has caused flooding in communities downstream from the dam, destroying homes and farmland along the banks of the River Volta. Some communities were therefore displaced into safe havens (also known as collective centers) in the districts of Ada East, Central Tongu, North Tongu and Shai Osudoku. In order to obtain updated figures on the populations in the safe havens, the National Disaster Management Organization (NADMO), with the technical and financial support of the International Organization for Migration (IOM), deployed between 14 to 17 November 2023, 30 enumerators in the 25 safe havens in the districts.

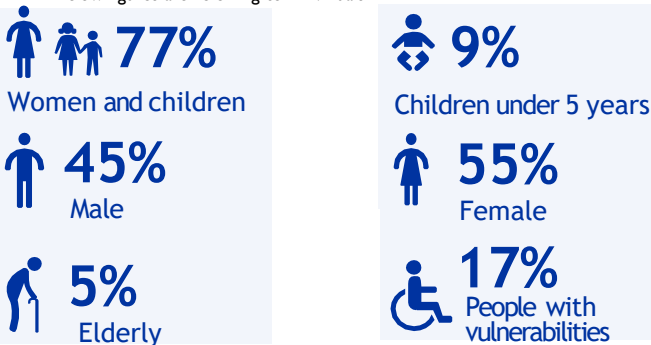
This deployment intended to register all internally displaced persons (IDPs) in the safe havens and provide a more in-depth analysis of their specific needs by capturing data using the DTM-developed Standard Registration Tool, which registers IDPs. It provides further information on the individuals, households, existing vulnerabilities, as well as displacement-related triggers to inform future programming.

The registration was conducted in collaboration with the World Food Programme (WFP), World Vision and the Ghanaian Federation of Persons with Physical Disabilities.

The 30 NADMO staff were trained on the IOM Standard Registration Tool and the methodology to complete the registration successfully. The enumerators were distributed according to the estimated number of people in the safe havens received by NADMO. Three supervision teams were established composed of NADMO, IOM, WFP and World Vision. One team supervised activities in Central Tongu and North Tongu, another supervised activities in Ada East and the final team was in charge of the supervision of activities in Shai Osudoku.

Total Registered
7,044 individuals **1,492** households

• Below figures are referring to individuals



• People with vulnerabilities include persons visually impaired, pregnant woman, physically challenge, hearing impairment,

Figure 3 : Possession of Ghana card

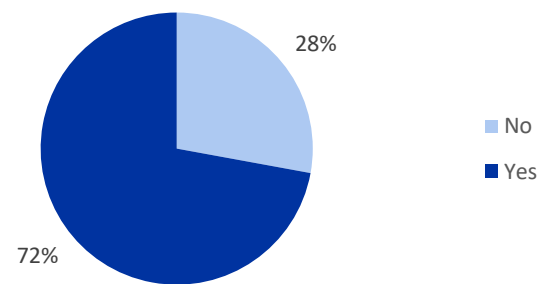


Figure 4 : Intentions of households in the next month

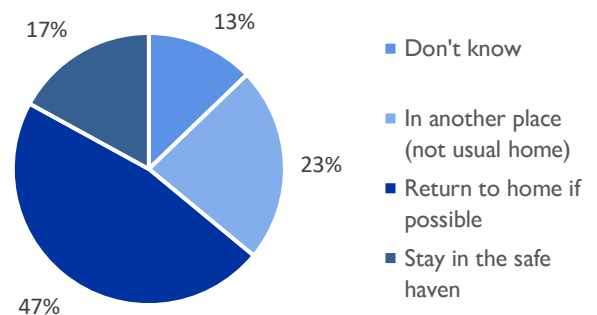


Figure 5 : Top 5 needs in the districts according to head of households (several answers possible)

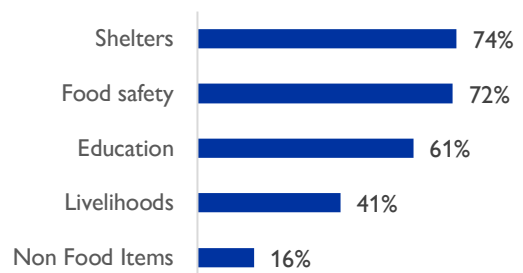


Figure 1 : Registered individuals per district

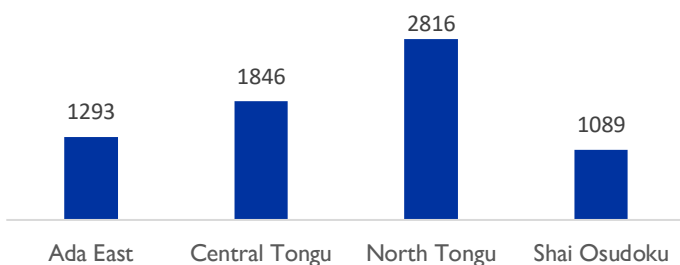
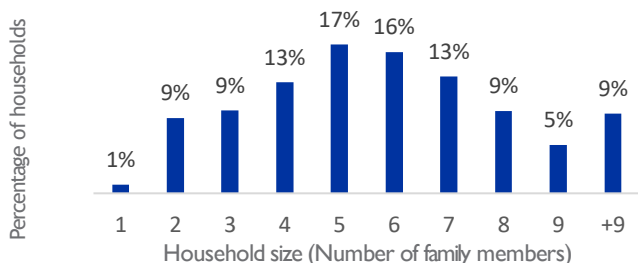


Figure 2 : Household size distribution



INDIVIDUALS REGISTERED BY DISTRICT AND COLLECTIVE CENTER

District	Collective centers	Female					Male				
		0-4	5-17	18-59	+60	Total Female	0-4	5-17	18-59	+60	Total Male
Ada East	Azizanya Methodist D/A School	48	191	313	43	595	57	191	194	28	470
	Big Ada Basic School	7	37	43	10	97	9	24	45	5	83
Central Tongu	Adidome Farm Institute	7	36	39	18	100	9	31	24		64
	Afetorgborkope-Adidome	9	36	39	7	91	6	27	29	5	67
	Camp Daniel Street	2	25	32	11	70	4	23	12	6	45
	Lunchtorkor-Adidome	38	137	244	46	465	24	142	150	29	345
	New Bakpa	13	119	157	63	352	18	112	91	17	238
North Tongu	Agbetikpo Primary School, Agbetikpo	22	81	122	26	251	21	85	90	9	205
	Aveyime R.C Primary School, Aveyime	2	5	6	2	15	3	9	4		16
	Battor R.C Primary, Battor	12	15	58	4	89	5	23	35	6	69
	Dedukope D/A Primary School, Dedukope	3	10	7		20	4	6	4		14
	Dorfor Adidome Primary School, Dorfor Adidome	3	26	42	7	78	15	24	42	9	90
	Fodzoku E.P Primary School, Fodzoku	16	45	70	20	151	7	54	72	13	146
	Holy Christ, Mepe	13	20	32	12	77	7	19	23		49
	Mepe D/A JHS, Mepe	2	7	30	8	47	5	10	23	4	42
	Mepe Presby JHS, Mepe		3	5	4	12	1	3	10	3	17
	Mepe Presby Primary, Mepe	8	23	83	28	142	3	34	56	13	106
	Mepe R.C JHS, Mepe	7	33	63	5	108	9	17	26	1	53
	Mepe R.C Primary School, Mepe	2	20	62	13	97	7	31	46	4	88
	Morkplikpo Primary School, Morkplikpo	1	14	58	6	79	4	20	46	15	85
St. Kizito SHS, Mepe	20	80	197	11	308	31	88	122	14	255	
Volo E.P School, Volo	10	20	30	3	63	7	17	29		53	
Shai Osudoku	Ada-Korpe School	13	36	59	6	114	16	66	66	10	158
	Residential Accomodation	14	35	55	5	109	16	40	55	4	115
	Tokpo D/A School	30	143	129	30	332	35	125	86	15	261
	Volta Revival Foundation	2	16	15		33	3	7	5		15
					3895					3149	