

# DISPLACEMENT AND NEEDS UPDATE: DERNA MUNICIPALITY

## IMPACT OF STORM DANIEL

OCTOBER 2023



### OVERVIEW

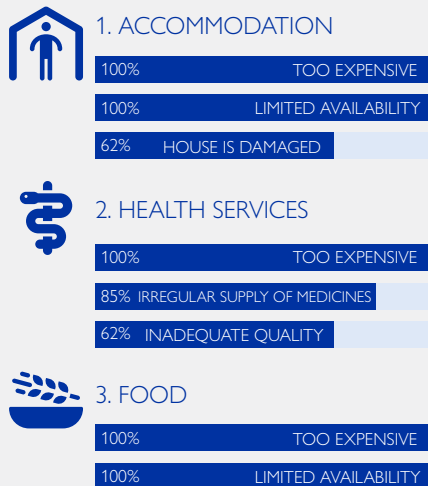
On 10 September 2023 Storm Daniel hit northeastern Libya, leading to substantial rainfall and sudden floods in the coastal areas and cities. The subsequent collapse of the Mansour and Derna dams severely compounded damages across Derna municipality. As of October 2023, DTM estimates 44,862 IDPs were displaced across Libya due to the flooding.

A total of **23,500 IDPs** (52% of all IDPs in Libya) are displaced in Derna municipality in five communities (*muhallas*), comprising 13 sub communities (neighbourhoods) shown in the map.



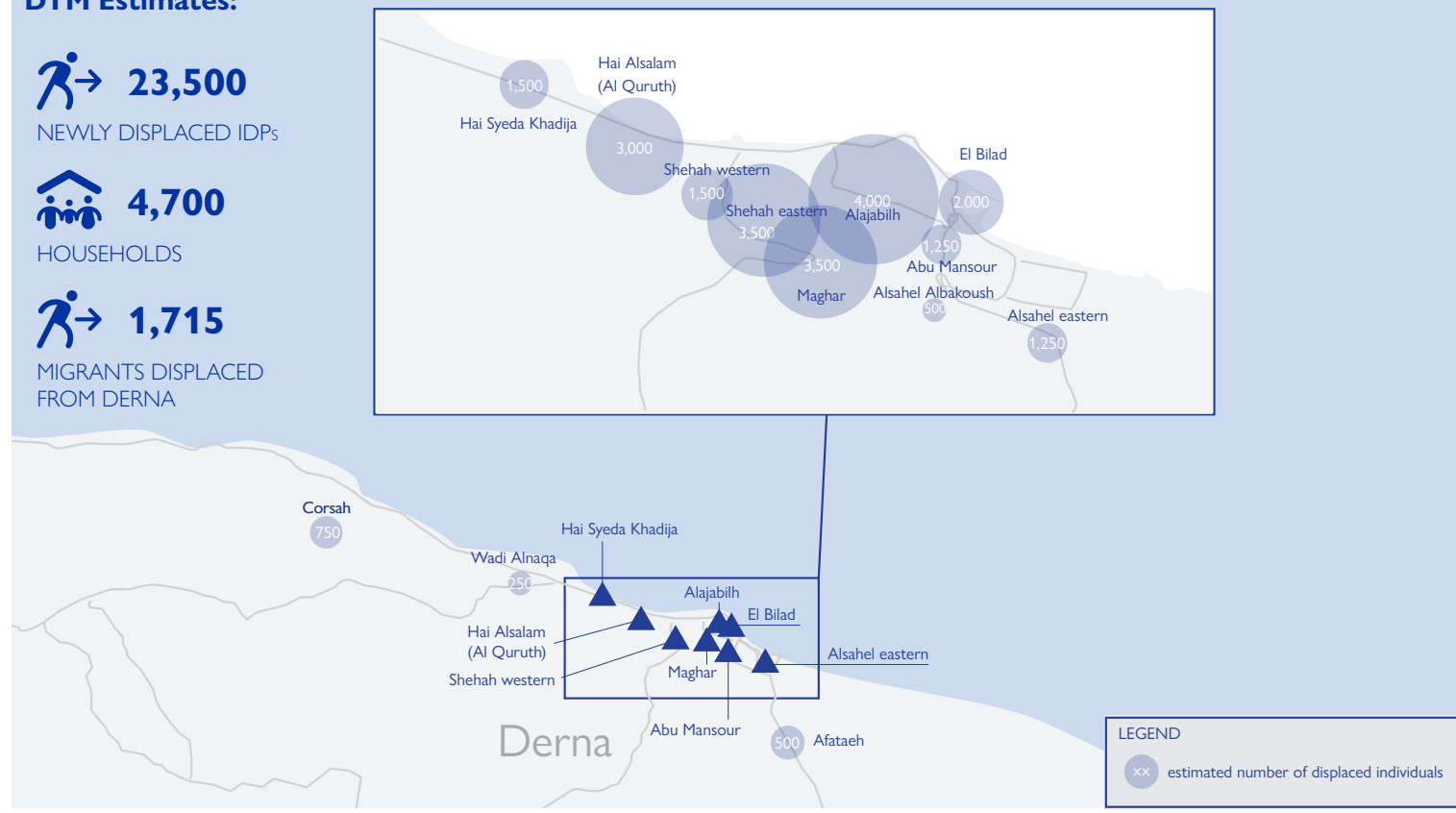
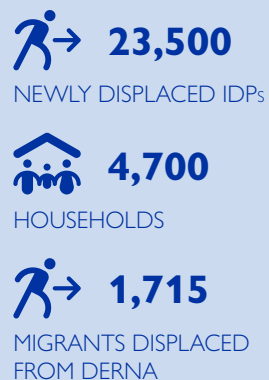
### NEEDS AND CHALLENGES

DERNA, N=13 SUB COMMUNITIES



### MAP 1: ESTIMATED NUMBER OF IDPs IN DERNA SUB COMMUNITIES (NEIGHBOURHOODS)

As of October 2023  
DTM Estimates:



The top three priority needs for individuals in Derna municipality were **accommodation** (11,750 IDPs, 50%), **health services** (7,050 IDPs, 30%) and **food** (4,700 IDPs, 20%). The top three challenges cited by key informants to obtaining these needs in their community (*muhalla*) are also shown below each corresponding need.

### METHODOLOGY

The data and information used for this dashboard was collected by DTM Libya in October 2023 in 56 municipalities in the East and the West of Libya. Out of these, 43 municipalities (mostly in the north east) identified new IDPs as a result of the floods caused by Storm Daniel. The findings for all municipalities currently hosting IDPs due to floods can be [accessed here](#). This dashboard only focuses on the findings for Derna municipality.

© IOM 2023. Some rights reserved. This work is made available under the [Creative Commons Attribution-NonCommercial-NoDerivs 3.0 IGO License](#) (CC BY-NC-ND 3.0 IGO). This publication was issued without formal editing by IOM. The following citation is required when using any data and information included in this information product: "International Organization for Migration (IOM), October 2023. IOM Libya - Displacement and Needs Update: Derna Municipality, Impact of Storm Daniel."

This publication was made possible through support provided by the European Union. The opinions expressed herein are those of the authors and do not necessarily reflect the views of the European Union. All maps are for illustration purposes only. Name & boundaries on this map do not imply endorsement or acceptance by IOM.



# DISPLACEMENT AND NEEDS UPDATE: DERNA MUNICIPALITY

## IMPACT OF STORM DANIEL

OCTOBER 2023

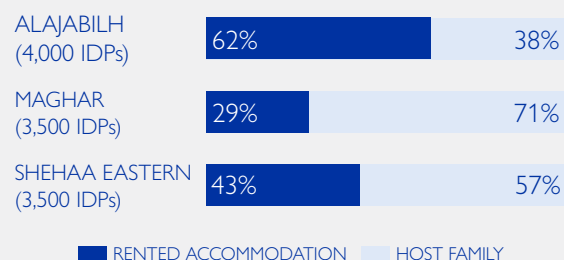


### ACCOMMODATION

- IDPs living in public buildings comprised one per cent of all IDPs in Derna. IDPs living in public buildings were identified in Shehaa western (150 IDPs, 10% of IDPs in this neighbourhood), and Abu Mansour (100 IDPs or 8% of IDPs in this neighbourhood).



Top three neighbourhoods hosting the highest number of IDPs, by accommodation type (% of IDPs)



### HEALTH SERVICES

- All health services including ambulance services, general clinical services, child health, nutritional and mental health services were available. However, the irregular supply of medication was cited by key informants.
- Poor warehouse conditions and flood-related access disruptions were noted as challenges in the medication supply chain.



1 HOSPITAL, PARTIALLY OPERATIONAL



16 PUBLIC HEALTH CENTRES AND CLINICS



4 PRIVATE HEALTH CENTRES AND CLINICS



### FOOD

- The main sources of food in Derna were grocery stores and open markets, as well as charity or aid organizations that provided food aid.



### NFIs

- Issues with the high cost of NFIs as well as the low quality of items were cited as the main challenges to obtaining NFIs by key informants in Derna municipality.

Top NFI needs in Derna

- MATTRESSES
- CLOTHING
- COOKING GAS/FUEL
- ELECTRIC HEATERS
- HYGIENIC ITEMS

### ACCESS TO INCOME

- The main employment sectors in Derna are small businesses and public sector employment.
- Key informants in Derna also stated that aid received was the main source of livelihoods for some residents.

### EDUCATION

77 PUBLIC SCHOOLS  
65 OPERATIONAL

30 PRIVATE SCHOOLS  
ALL OPERATIONAL

5 FULLY DAMAGED SCHOOLS

4 PARTIALLY DAMAGED SCHOOLS

### WASH

#### UNAVAILABLE SERVICES:

- SEWAGE TREATMENT
- INFRASTRUCTURE REPAIR
- GARBAGE DISPOSAL

#### MAIN CHALLENGES WHERE WATER IS AVAILABLE:

- TOO EXPENSIVE
- NOT SAFE FOR CONSUMPTION

### ELECTRICITY



KEY INFORMANTS REPORTED OCCASIONAL POWER OUTAGES (FEWER THAN 7 DAYS EACH MONTH)



© IOM 2023