

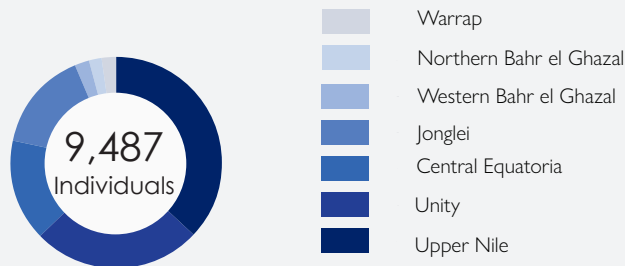
Overview

Since the fighting between the Sudanese Armed Forces (SAF) and paramilitary Rapid Support Forces (RSF) erupted in Khartoum and spread to other locations within the country, majority of South Sudan returnees, Sudanese and other nationalities have crossed over into South Sudan through Wunthow (Juda) point of entry leading to opening of Renk TC. As at 21 September, the population of Renk TC was 12,200 individuals (2,033 households).

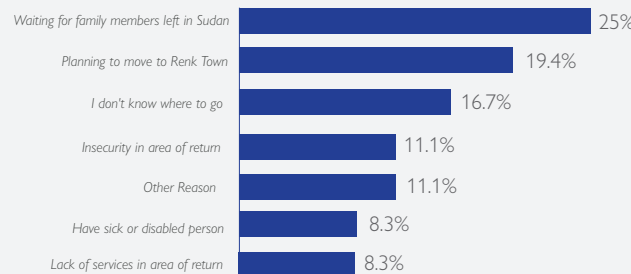
On 27 September 2023, IOM and partners conducted a rapid intention survey in Renk TC and its area adjacent. The partners included ACTED, Save the Children, Mentor Initiative, Plan International, ADRA, IRC, LWF and GOAL. The purpose of this exercise was to monitor the population dynamics and displacement trends in the center and to inform humanitarian response. Data collected included movement intentions, preferred intended destination, and reasons for those that intend to remain at the transit center in the short term response.

Intentions of returnees

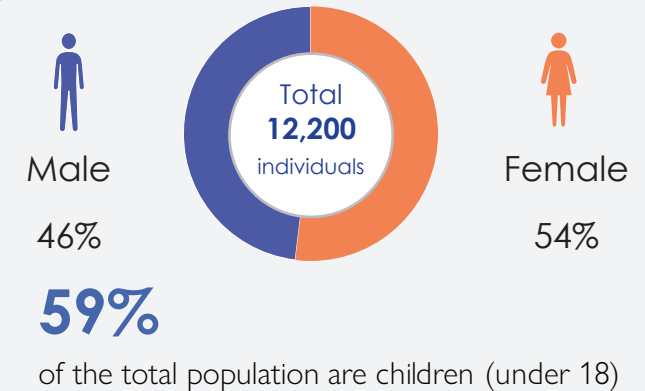
88% of returnees intend to go to their areas of origin (66.9%) or move to other areas within South Sudan (21%)



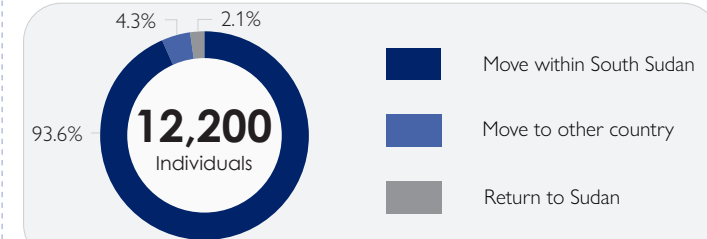
9.5% of returnees intend to remain at the Renk TC for the short-term indicating these reasons



Demography



Intentions of population at Renk TC

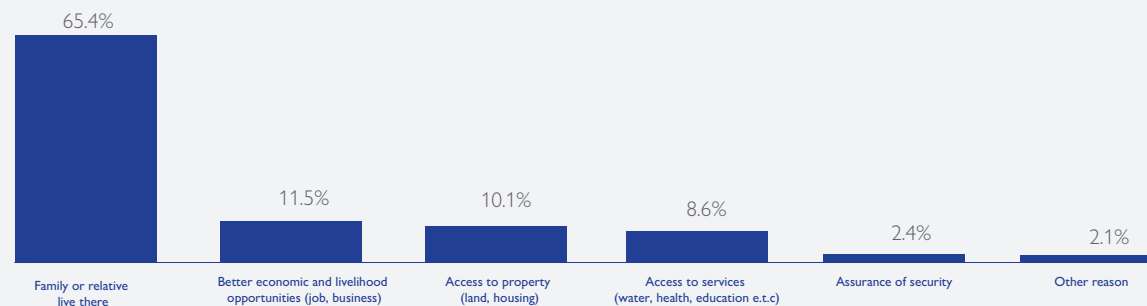


Arrival to Transit Center



*Top 2 periods of arrivals - The remaining 40% of the population arrived between April to August 2023.

Main reason for returnees choice of destination



For more information contact:



<https://dtm.iom.int/south-sudan>
southsudanDTM@iom.int

DTM is supported by: