



Various IDP huts clustered along the base of the Guzargah-e-Nur district, Baghlan © IOM 2017

## ABOUT DTM

The Displacement Tracking Matrix (DTM) is a system that tracks and monitors displacement and population mobility. It is designed to regularly and systematically capture, process and disseminate information to provide a better understanding of the movements and evolving needs of displaced populations, whether on site or en route. For more information about the DTM, please visit [www.displacement.iom.int/afghanistan](http://www.displacement.iom.int/afghanistan).

In Afghanistan, DTM employs the Baseline Mobility Assessment tool, designed to track mobility, determine the population sizes and locations of forcibly displaced people, reasons for displacement, places of origin, displacement locations and times of displacement, including basic demographics, as well as vulnerabilities and priority needs. Data is collected at the settlement level, through key informant interviews, focus group discussions, and direct observations.

This provincial report summarises the DTM findings in Baghlan. The data has been collected throughout 15 districts and 548 settlements in Baghlan. This provincial report is supplementary to its nationwide counterpart, please see: Baseline Mobility Assessment Summary Results (November — December 2017).

DTM enables IOM and its partners to deliver evidence-based, better targeted, mobility-sensitive and sustainable humanitarian assistance, reintegration, community stabilization and development programming.

## 5 TARGET POPULATIONS

Through the Baseline Mobility Assessments, DTM tracks the locations, population sizes, and cross-sectoral needs of the five core target population categories:

1. Returnees from Abroad
2. Out-Migrants
  - Internally Displaced Persons (IDPs), subdivided into the following three categories:
3. Arrival IDPs
4. Returnee IDPs
5. Fled IDPs

Data on population sizes for the 5 target population categories is collected by time of displacement, using each of the following time frames: 2012-2015 • 2016 • 2017.

## HIGHLIGHTS



**15** districts assessed

**548** settlements assessed

in Andarab, Baghlan-e-Jadid, Burka, Dahana-e-Ghori, Dehsalah, Doshi, Fereng Wa Gharu, Guzargah-e-Nur, Khenjan, Khost Wa Fereng, Khwajaherjran, Nahrin, Pul-e-Khumri, Pul-e-Hesar and Tala wa Barfak



**2,901**

key informants interviewed



**107,290**

returnees from abroad [2012–2017]



**76,246**

IDPs [2012–2017] currently in host communities



**265,839**

former IDPs [2012–2017] have returned to their homes



**93,910**

out-migrants fled abroad [2012–2017]



**18,055**

out-migrants fled to Europe (19% of out-migrants)



**1,420**

returnees and IDPs live in tents or in the open air (1% of total returnees and IDPs)



**2 in 3**

persons from Baghlan-e-Jadid have been an IDP and returned home



**1 in 3**

persons from Pul-e-Hesar has fled their home as an IDP



**1 in 4**

persons from Burka has fled abroad as an out-migrant



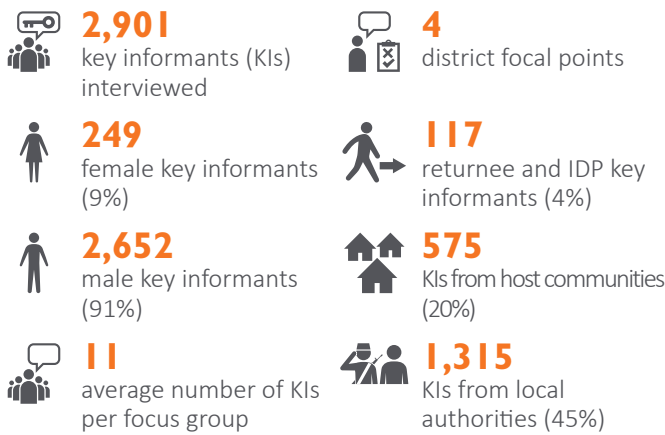
**1 in 4**

persons from Baghlan-e-Jadid is either an IDP or a Returnee

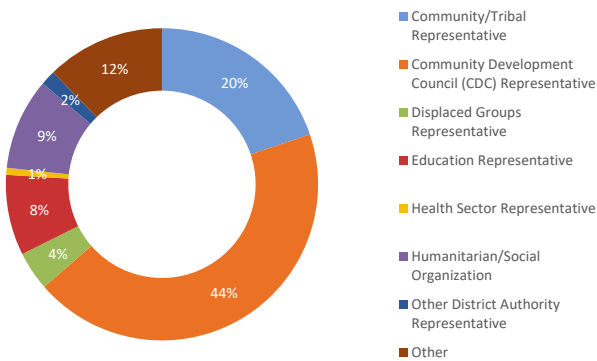
## KEY INFORMANTS

DTM's field enumerators, District Focal Points (DFPs), collect data at the settlement level, predominantly through focus group discussions with key informants. The average size of focus groups is five key informants per group. In the rare case that DTM's District Focal Points cannot physically reach a community, due to insecurity, conflict, or risk of retaliation by anti-government elements, DFPs meet the focus groups at a safe place outside their communities or conduct the assessments by phone.

Significant highlights regarding the overall composition of Key Informant Focus Groups include the following:



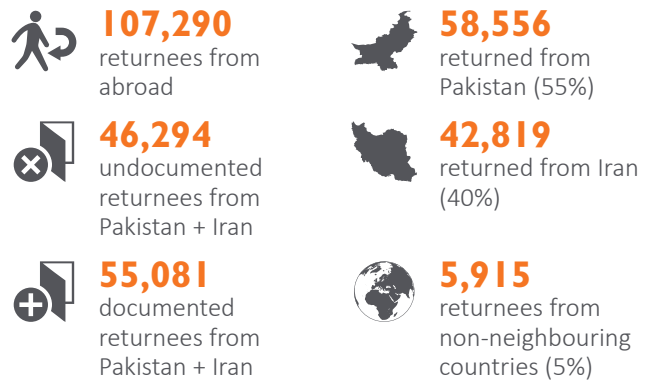
Key Informants by Type | Baghlan



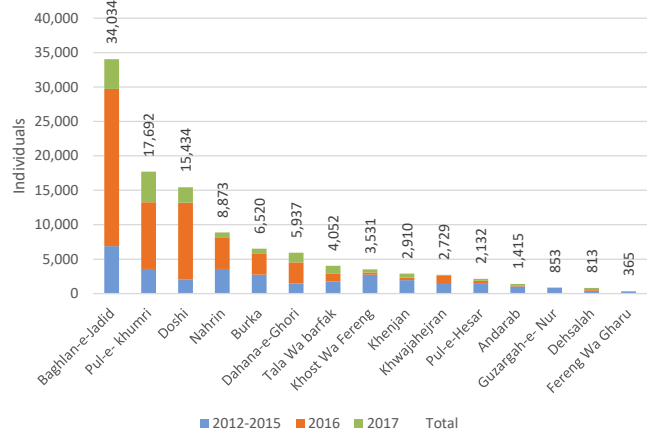
## RETURNEES

Returnees are Afghan nationals who have returned to Afghanistan in the assessed location after having spent at least six months abroad. This group includes both documented returnees (Afghans who were registered refugees in host countries and then requested voluntary return with UNHCR and relevant national authorities) and undocumented returnees (Afghans who did not request voluntary return with UNHCR, but rather returned spontaneously from host countries, irrespective of whether or not they were registered refugees with UNHCR and relevant national authorities).

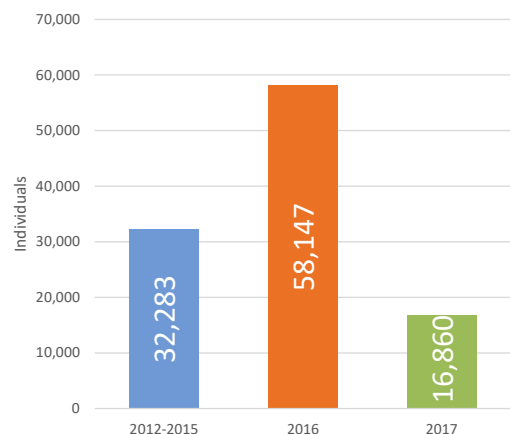
The number of returnees from abroad to Baghlan increased by 80% in 2016 alone, compared to the period between 2012 and 2015, followed by a notable 71% decrease in returns in 2017. During all these three time frames, Baghlan-e-Jadid has hosted the majority of returnees; 34,034 persons (32% of all returnees to Baghlan).



Returnees from Abroad by District | Baghlan



Returnees from Abroad | Annual Trends | Baghlan



A Baghlan focus group discussion © IOM 2017

## IDPs

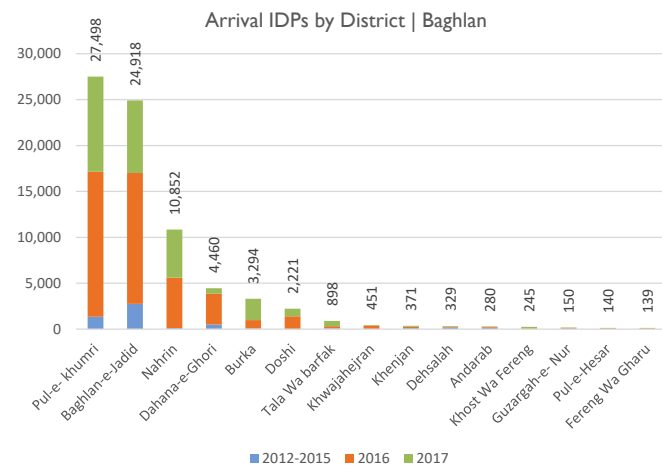
Arrival IDPs (IDPs) are Afghans who have fled from other settlements in Afghanistan and have arrived and presently reside at the assessed location / host community, as a result of, or in order to avoid, the effects of armed conflict, generalized violence, human rights violations, protection concerns, or natural and human-made disasters.

**76,246**  
IDPs

**90%**  
IDPs relocate within their home province

**84%**  
displaced due to conflict

**16%**  
displaced by natural disaster



## OUT-MIGRANTS

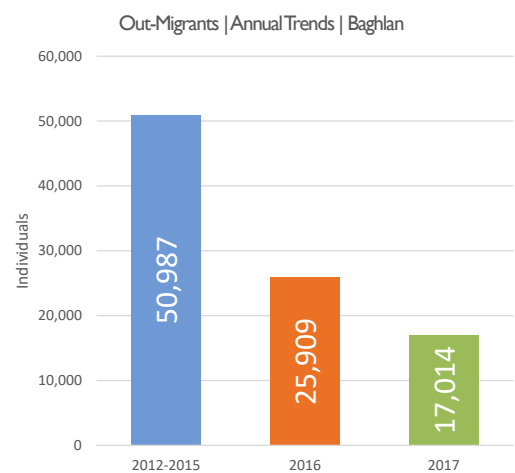
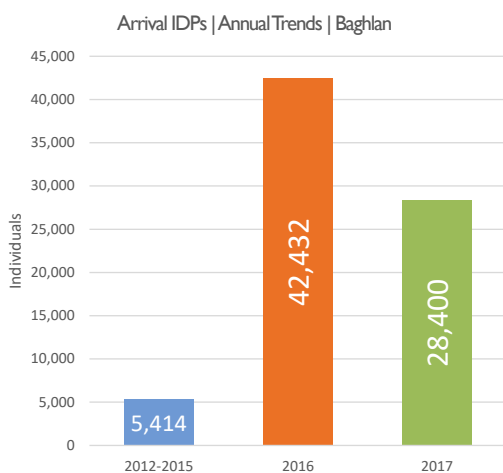
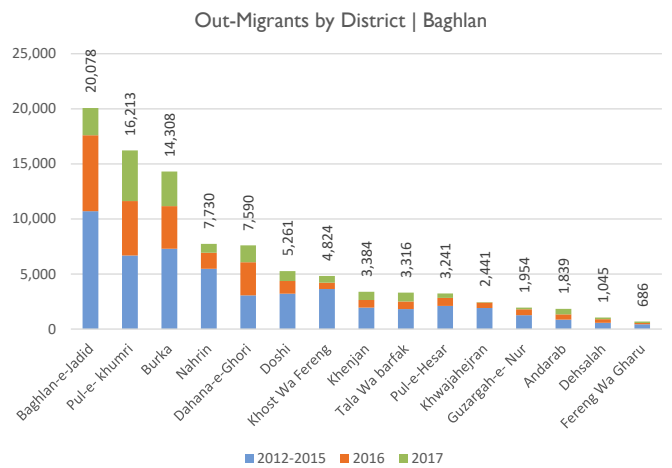
Out-Migrants are Afghans who have moved or fled abroad from the assessed location, whatever the cause, reason or duration of expatriation. This category includes refugees, displaced and uprooted people, and economic migrants who have left Afghanistan.

**93,910**  
fled abroad

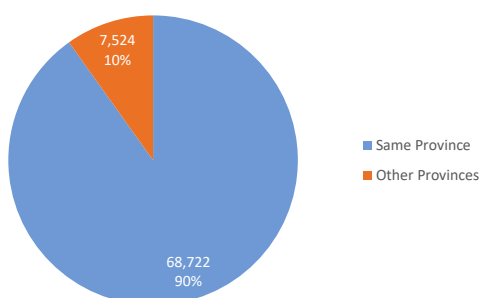
**18,055**  
fled to Europe (19%)

**63,218**  
fled to Iran (67%)

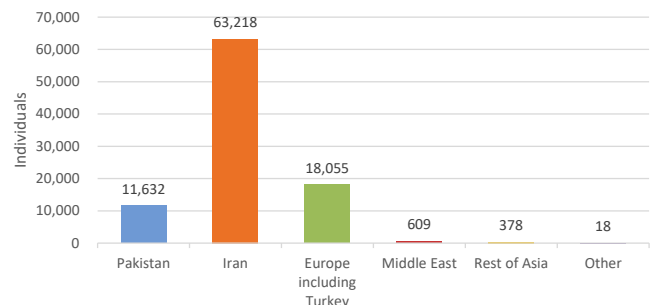
**11,632**  
fled to Pakistan (12%)



Arrival IDPs by Province of Origin | Baghlan



Out-Migrants by Country/Region of Destination | Baghlan



Displaced Individuals in all 5 Target Populations | Summary Overview by District

District	*Base Population	Total Inflow (Returnees + Arrival IDPs)	% of Pop.	Returnees	% of Pop.	Returnee IDPs	% of Pop.	Arrival IDPs	% of Pop.	Fled IDPs	% of Pop.	Out Migrants	% of Pop.
Andarab	26,468	1,695	6%	1,415	5%	245	1%	280	1%	2,396	9%	1,839	7%
Baghlan-e-Jadid	180,421	58,952	25%	34,034	14%	126,726	70%	24,918	10%	19,247	11%	20,078	11%
Burka	54,643	9,814	15%	6,520	10%	7,961	15%	3,294	5%	13,747	25%	14,308	26%
Dahana-e-Ghori	61,118	10,397	15%	5,937	8%	26,823	44%	4,460	6%	16,557	27%	7,590	12%
Dehsalah	33,176	1,142	3%	813	2%	358	1%	329	1%	1,607	5%	1,045	3%
Doshi	69,402	17,655	20%	15,434	18%	3,272	5%	2,221	3%	2,921	4%	5,261	8%
Fereng Wa Gharu	17,198	504	3%	365	2%	203	1%	139	1%	329	2%	686	4%
Guzargah-e- Nur	10,490	1,003	9%	853	7%	740	7%	150	1%	2,060	20%	1,954	19%
Khenjan	31,590	3,281	9%	2,910	8%	251	1%	371	1%	690	2%	3,384	11%
Khost Wa Fereng	65,499	3,776	5%	3,531	5%	2,793	4%	245	0%	2,526	4%	4,824	7%
Khwajahejran	24,760	3,180	11%	2,729	10%	3,252	13%	451	2%	2,913	12%	2,441	10%
Nahrin	71,883	19,725	22%	8,873	10%	13,526	19%	10,852	12%	7,727	11%	7,730	11%
Pul-e- khumri	220,311	45,190	17%	17,692	7%	72,535	33%	27,498	10%	16,314	7%	16,213	7%
Pul-e-Hesar	28,663	2,272	7%	2,132	7%	6,329	22%	140	0%	10,752	38%	3,241	11%
Tala Wa barfak	31,347	4,950	14%	4,052	11%	825	3%	898	2%	8,215	26%	3,316	11%
Total	926,969	183,536	17%	107,290	10%	265,839	29%	76,246	7%	108,001	12%	93,910	10%

\* Base Population source: OCHA, CSO Population Estimates for 2016 to 2017, 15-AUG-2016

Symbology: > 20% of base population

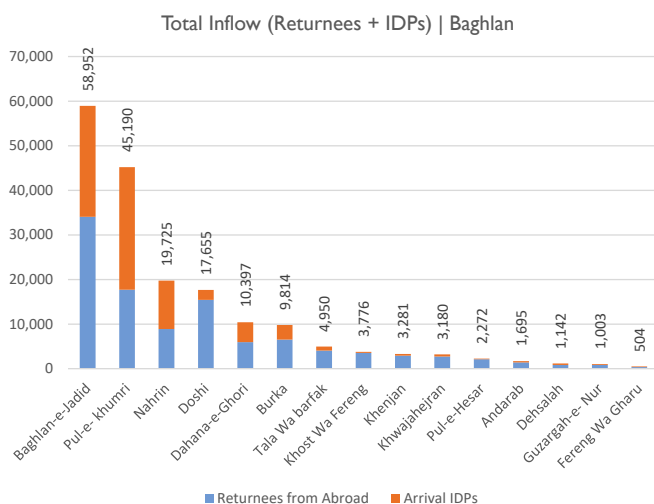
Total Inflow (Returnees + IDPs) | Summary by District

District	Returnees	Arrival IDPs	Total Inflow
Baghlan-e-Jadid	34,034	24,918	58,952
Pul-e- khumri	17,692	27,498	45,190
Nahrin	8,873	10,852	19,725
Doshi	15,434	2,221	17,655
Dahana-e-Ghori	5,937	4,460	10,397
Burka	6,520	3,294	9,814
Tala Wa barfak	4,052	898	4,950
Khost Wa Fereng	3,531	245	3,776
Khenjan	2,910	371	3,281
Khwajahejran	2,729	451	3,180
Pul-e-Hesar	2,132	140	2,272
Andarab	1,415	280	1,695
Dehsalah	813	329	1,142
Guzargah-e- Nur	853	150	1,003
Fereng Wa Gharu	365	139	504
Total	107,290	76,246	183,536

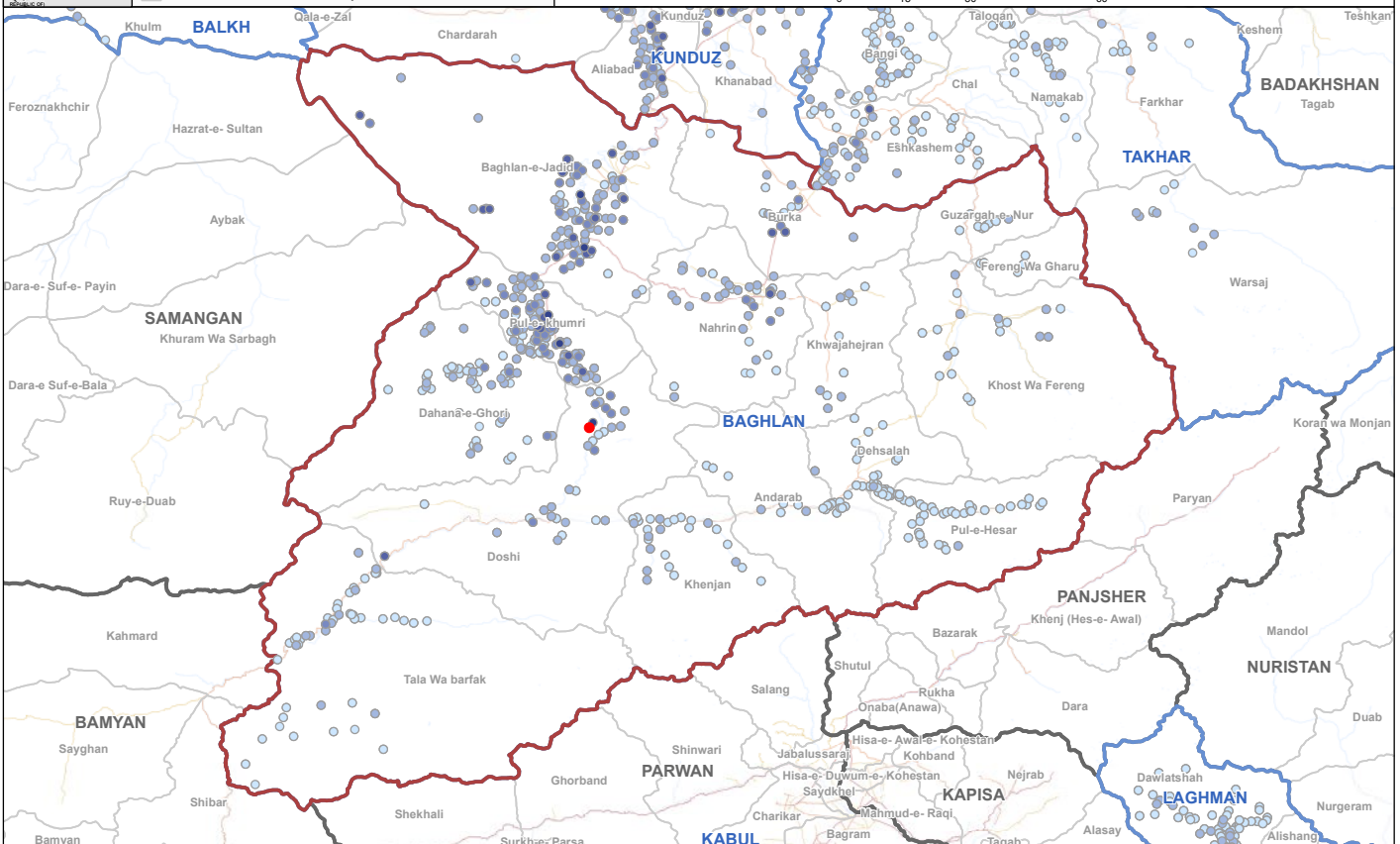
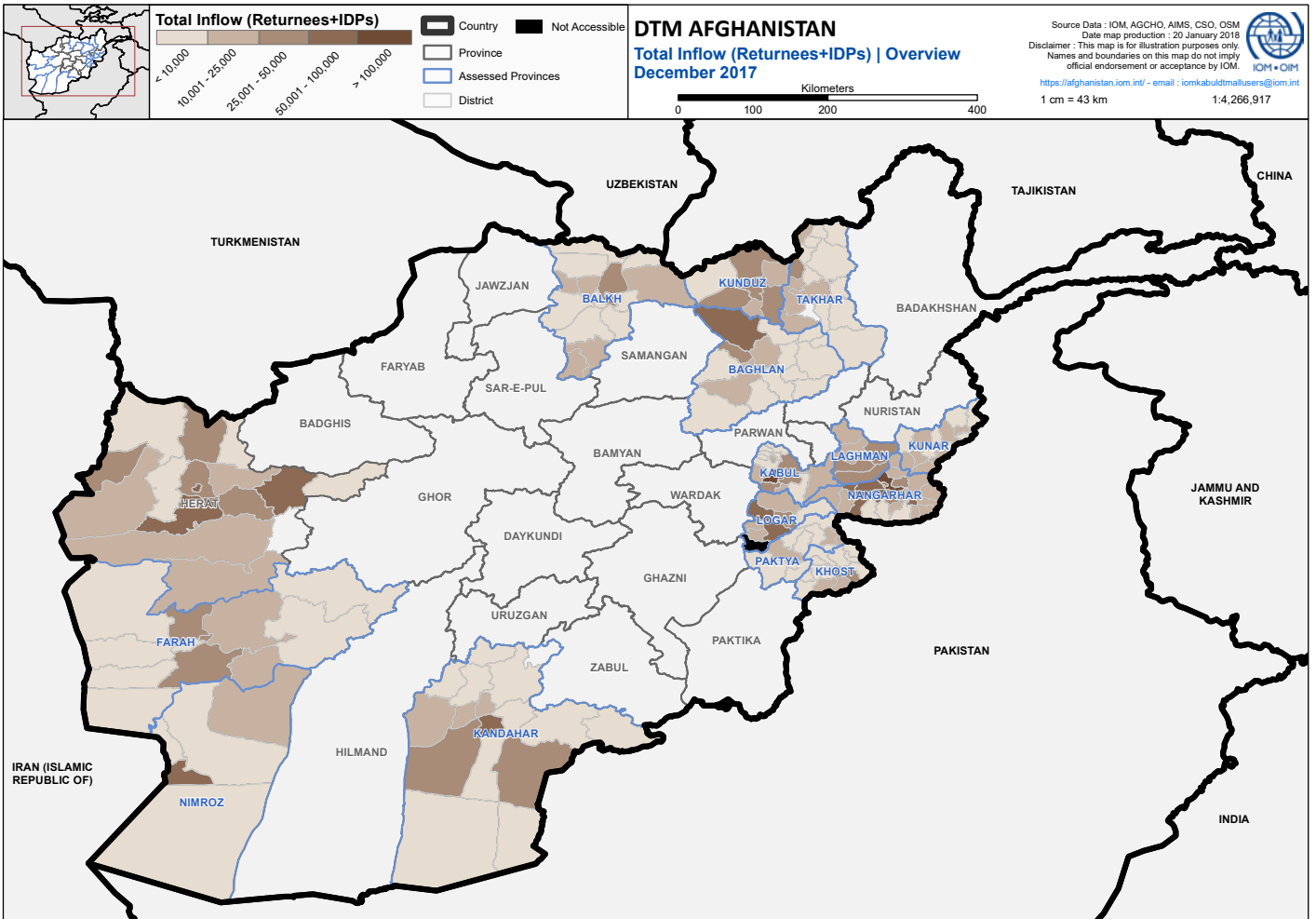
The below table displays the 20 settlements in Baghlan that host the most IDPs and returnees. As is shown by the table, the top 20 settlements host 51,483 of the 183,536 returnees and IDPs. This means that 28% of IDPs and returnees in Baghlan are hosted within 20 settlements (4% of total assessed settlements in Baghlan). Of these, the Zahrabi settlement in Doshi is most severely impacted, hosting a total inflow of 6,868. On the other hand, the most impacted district is Baghlan-e-Jadid, hosting a total inflow of 58,952 - 32% of the total amount of IDPs and returnees in Baghlan.

Top 20 settlements hosting the most Returnees + IDPs

Settlement	District	Total Inflow
Zahrabi	Doshi	6,868
Laqi Ha	Baghlan-e-Jadid	4,332
Kal	Burka	3,590
Jawal Tapa	Baghlan-e-Jadid	3,507
Dar-e- soof Laqiha	Baghlan-e-Jadid	3,436
Ghulam Bay	Baghlan-e-Jadid	3,386
Shahr Qadem	Nahrin	2,800
Nahrin	Nahrin	2,735
Now Rozak	Baghlan-e-Jadid	2,575
Turani	Baghlan-e-Jadid	2,325
Hussain Khail Kandhari	Pul-e- khumri	2,100
Chakari	Pul-e- khumri	1,921
Hafeza Bacha	Nahrin	1,855
Hussain Khal Bala Dowri Number (3)	Pul-e- khumri	1,665
Mughul Ha	Baghlan-e-Jadid	1,500
Nowabad Baz Laqay Ha	Baghlan-e-Jadid	1,476
Now Abad Nahrin	Nahrin	1,475
Nasir Ya Ahmad Zai	Pul-e- khumri	1,355
Ali Khowja	Baghlan-e-Jadid	1,310
Chapa Maidan	Burka	1,272
Total		51,483







## TOP 5 DISTRICTS

Evidence-based prioritization is essential to the delivery of better targeted assistance and basic services. DTM provides partners with lists of priority areas in most need of assistance, based on a variety of sectoral indicators, at Province, District and Settlement levels.

(NOTE: The number of individuals reported below is based on the Total Inflow: IDPs + Returnees)

### TOP 5 Districts with the most Returnees and IDPs (Returnees + IDPs)

Rank	District	Individuals
1	Baghlan-e-Jadid	58,952
2	Pul-e- khumri	45,190
3	Nahrin	19,725
4	Doshi	17,655
5	Dahana-e-Ghori	10,397
<b>Grand Total</b>		<b>151,919</b>

### TOP 5 in need of Shelter (IDPs + Returnees living in Tents or in the Open Air)

Rank	District	Individuals
1	Pul-e- khumri	1,351
2	Baghlan-e-Jadid	56
3	N/A	N/A
4	N/A	N/A
5	N/A	N/A
<b>Grand Total</b>		<b>1,407</b>

### TOP 5 in need of Water (potable water > 3 km away)

Rank	District	Individuals
1	Baghlan-e-Jadid	20,508
2	Doshi	7,460
3	Nahrin	4,030
4	Khwajahejran	2,304
5	Khost Wa Fereng	2,009
<b>Grand Total</b>		<b>36,311</b>

### TOP 5 in need of Clinics (nearest clinic > 5 km away)

Rank	District	Individuals
1	Baghlan-e-Jadid	21,330
2	Pul-e- khumri	18,255
3	Doshi	12,726
4	Dahana-e-Ghori	6,827
5	Nahrin	3,861
<b>Grand Total</b>		<b>62,999</b>

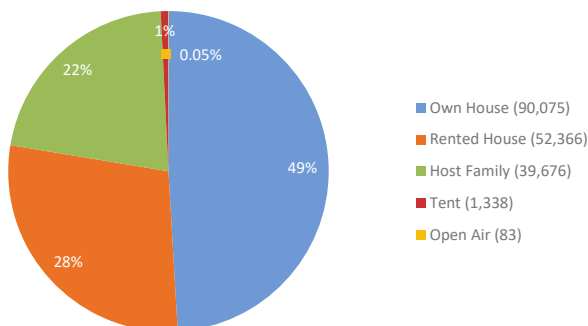
### TOP 5 in need of Schools (nearest school > 3 km away)

Rank	District	Individuals
1	Doshi	8,163
2	Pul-e- khumri	7,357
3	Baghlan-e-Jadid	7,272
4	Pul-e-Hesar	756
5	Tala Wa barfak	523
<b>Grand Total</b>		<b>24,071</b>

### TOP 5 in need of Markets (nearest market > 10 km away)

Rank	District	Individuals
1	Pul-e- khumri	22,804
2	Doshi	17,611
3	Baghlan-e-Jadid	16,324
4	Dahana-e-Ghori	7,635
5	Nahrin	5,323
<b>Grand Total</b>		<b>69,697</b>

Total Inflow (Returnees+IDPs) | Shelter | Baghlan



## STORIES FROM THE DISPLACED

### From Kunduz to Baghlan: An IDP father-of-two flees Taliban destruction

In 2016, the Taliban captured Kunduz city. With the capture of the city, hordes of Kunduz residents were displaced by the conflict, becoming IDPs. Habibullah Akbari and his family were among those who were uprooted from their home province. Like many others, they fled south towards the neighbouring province of Baghlan. "After the Taliban destroyed our village and spoiled all the tools and properties we had, I left my home with my family towards Pul-e-Khomri," Habibullah explained. "Now I am living with my family of five children in a returnee camp located in the city."

*Between 2012-2015, there were 5,414 arrival IDPs in Baghlan. By 2016, the number of IDPs had drastically increased to 42,432, partly reflecting the major displacement caused by the Taliban takeover of Kunduz, as well as escalated conflict within Baghlan.*

During the attack, his cow (worth 70,000 AFNs and the family's primary source of income) was killed, and he now does not have any reliable source of income. As such, his two children, who are just eight and nine years old, are now working in the city with their father. Even though they desperately need the money, Habibullah would prefer that his children attend school, but they have had logistical troubles. "My children can't go to school because they don't have an educational document here in Baghlan province," he explains. "Since I can't go back to Kunduz to bring their documents, they have lost three years of education." Habibullah also tells us that he is often unable to access clean and safe drinking water or find food to feed his family.

At this stage, Habibullah and his family desperately require financial and psychological support to rebuild their lives. Habibullah tells us; "Now all of my family members are suffering from psychological disease due to the poor economic conditions. Even where we are now, we are not settled or safe because sometimes there are clashes between the Taliban and the Afghan army."



Habibullah, an IDP father of two, currently living in Baghlan.

DTM in Afghanistan is generously supported by:



## ANNEX I ▪ TOP 200 SETTLEMENTS

RANKED BY TOTAL IN-FLOW [RETURNEES + IDPS]

Rank	District	Settlement	Total In-Flow	Rank	District	Settlement	Total In-Flow
1	Doshi	Zahrabi	6,868	53	Baghlan-e-Jadid	Qandahari	779
2	Baghlan-e-Jadid	Laqi Ha	4,332	54	Baghlan-e-Jadid	Manqetan Bala	753
3	Burka	Kal	3,590	55	Nahrin	Niyaz Afghan	750
4	Baghlan-e-Jadid	Jawal Tapa	3,507	56	Baghlan-e-Jadid	Janda Khel	749
5	Baghlan-e-Jadid	Dar-e- soof Laqiha	3,436	57	Baghlan-e-Jadid	Chayabi	739
6	Baghlan-e-Jadid	Ghulam Bay	3,386	58	Nahrin	Tara Khail	726
7	Nahrin	Shahr Qadem	2,800	59	Pul-e- khumri	Pouza Eashan	721
8	Nahrin	Nahrin	2,735	60	Nahrin	Barqi Koh Gada	710
9	Baghlan-e-Jadid	Now Rozak	2,575	61	Pul-e- khumri	Kunduz Tapa Khandhari	707
10	Baghlan-e-Jadid	Turani	2,325	62	Pul-e- khumri	Shamraq Ya Shamraq Payen Chap Darya	697
11	Pul-e- khumri	Hussain Khail Kandhari	2,100	63	Pul-e- khumri	Qala Qazi	696
12	Pul-e- khumri	Chakari	1,921	64	Pul-e- khumri	Khoja Alwan Haji Mullah	694
13	Nahrin	Hafeza Bacha	1,855	65	Baghlan-e-Jadid	Ahmadi Khail	691
14	Pul-e- khumri	Hussain Khal Bala Dowri Number (3)	1,665	66	Baghlan-e-Jadid	Arbab Abdul Nazar	685
15	Baghlan-e-Jadid	Mughul Ha	1,500	67	Doshi	Markaz Dooshi	676
16	Baghlan-e-Jadid	Nowabad Baz Laqay Ha	1,476	68	Pul-e- khumri	Qule Hamam	676
17	Nahrin	Now Abad Nahrin	1,475	69	Pul-e- khumri	Bebi A'ina (2)	675
18	Pul-e- khumri	Nasir Ya Ahmad Zai	1,355	70	Baghlan-e-Jadid	Khala Zai (2)	670
19	Baghlan-e-Jadid	Ali Khowja	1,310	71	Baghlan-e-Jadid	Gadi (1)	665
20	Burka	Chapa Maidan	1,272	72	Baghlan-e-Jadid	Norzai	665
21	Doshi	Gozar	1,269	73	Khwajahejran	Masan	664
22	Nahrin	Jowi Kalan	1,269	74	Baghlan-e-Jadid	Larkhabi	661
23	Pul-e- khumri	Chashma-i-sher	1,251	75	Pul-e- khumri	Qule palang	657
24	Baghlan-e-Jadid	Zekir Khail	1,205	76	Baghlan-e-Jadid	Dasht-e-Gabar	640
25	Burka	Mamor Ghafar	1,155	77	Dahana-e-Ghori	Dara Kalan	639
26	Baghlan-e-Jadid	Shahri-kohna	1,084	78	Doshi	Chail Kaba Larkhabi	629
27	Pul-e- khumri	Gow Sawar Bala	1,039	79	Doshi	Papline	626
28	Pul-e- khumri	Wazir Abad Payen	1,001	80	Pul-e- khumri	Zaman Khail Uzbekha	623
29	Pul-e- khumri	Tapa Farhat	987	81	Nahrin	Jowi Kana	618
30	Pul-e- khumri	Wazir Abad Tanai	987	82	Baghlan-e-Jadid	Jadran	611
31	Baghlan-e-Jadid	Taghar	973	83	Baghlan-e-Jadid	Tajek Akhtachi	610
32	Pul-e- khumri	Gurgorak Kandahari	923	84	Pul-e- khumri	Chakary Zamankhail	596
33	Doshi	Kelagai Ya Baikh Kamar	910	85	Nahrin	Doabi	594
34	Baghlan-e-Jadid	Sare Shakh	899	86	Doshi	Mazardara	592
35	Pul-e- khumri	Mahjeren	897	87	Baghlan-e-Jadid	Shaikh	590
36	Pul-e- khumri	Khoja Alwan Now Abad	884	88	Pul-e- khumri	Dashtak	590
37	Khwajahejran	Shaikhani	876	89	Pul-e- khumri	Qule Shahre Now	581
38	Baghlan-e-Jadid	Shash Kapa	868	90	Nahrin	Sar-i-Tangi	578
39	Baghlan-e-Jadid	Sardar Khail	867	91	Dahana-e-Ghori	Babe Gahwara	567
40	Pul-e- khumri	Guzar Qule Pashai ha	858	92	Baghlan-e-Jadid	Kohnna Qala	566
41	Baghlan-e-Jadid	Khalid Zai	856	93	Pul-e- khumri	Bala Dowri Number (baba Nazar)	562
42	Doshi	Hijrat Abad	840	94	Dahana-e-Ghori	Lar Khabi	561
43	Pul-e- khumri	Arab Tapa Ahmad Zai	840	95	Baghlan-e-Jadid	Qaisar Khail	560
44	Baghlan-e-Jadid	Mangal	826	96	Pul-e- khumri	Guzar Bashi Gheyas	560
45	Dahana-e-Ghori	Dashtak	815	97	Baghlan-e-Jadid	Mullah Barat	558
46	Pul-e- khumri	Hajda Kotal	811	98	Tala Wa barfak	Poshta Marq	554
47	Pul-e- khumri	Koti Now	811	99	Baghlan-e-Jadid	Kok Chanar	548
48	Baghlan-e-Jadid	Gerdab	806	100	Tala Wa barfak	Dahan Tarmash	546
49	Pul-e- khumri	Park Shamraq	792	101	Khwajahejran	Shar Sharah	535
50	Baghlan-e-Jadid	Nawabad Abqol	791	102	Baghlan-e-Jadid	Utman Khel	527
51	Baghlan-e-Jadid	Qadzi	785	103	Andarab	Qeshnabad	526
52	Pul-e- khumri	Moghul Ha	785				

Rank	District	Settlement	Total In-Flow	Rank	District	Settlement	Total In-Flow
104	Pul-e- khumri	Sefedkhan Kalay	522	162	Baghlan-e-Jadid	Manqetan Payen	365
105	Nahrin	Aguly	512	163	Nahrin	Now Abad (3)	364
106	Pul-e- khumri	Khoja Alwan	511	164	Baghlan-e-Jadid	Wali Khail	358
107	Tala Wa barfak	Diktor Barfak	511	165	Doshi	Dahane Kuru	356
108	Baghlan-e-Jadid	Guldaray Ha	510	166	Pul-e- khumri	Gow Sawar Payen	346
109	Nahrin	Khowja Khazar	504	167	Burka	Pahlawan Tash (1)	344
110	Nahrin	Qoubi	498	168	Pul-e- khumri	Shahabuddin	342
111	Tala Wa barfak	Asia Gak	494	169	Pul-e- khumri	Gozar masjid Roza Dar	342
112	Baghlan-e-Jadid	Turani Bala	491	170	Pul-e- khumri	Masjid Sharkat	337
113	Dahana-e-Ghori	Charim Gari	491	171	Khost Wa Fereng	Dara Ge	334
114	Doshi	Larkhabi Nasiri	491	172	Doshi	Rama Dara	333
115	Nahrin	Lagan Khail	491	173	Khenjan	Gazagil	331
116	Baghlan-e-Jadid	Qangharat	490	174	Baghlan-e-Jadid	Chahar Shanba Tapa (1)	330
117	Baghlan-e-Jadid	Khoja Baba	487	175	Pul-e- khumri	Qule Qasabi	327
118	Pul-e- khumri	Karti Khorasan	484	176	Nahrin	Qawi Baghal	322
119	Baghlan-e-Jadid	Uzbek Ha	481	177	Doshi	Daka Aka Khail	321
120	Pul-e- khumri	Zamankhail bala	478	178	Nahrin	Lar Khawi	321
121	Dahana-e-Ghori	Tapa Karam Ali	477	179	Baghlan-e-Jadid	Shahi Khail	320
122	Doshi	Zolfiqar	473	180	Dahana-e-Ghori	Haji Habib	315
123	Pul-e- khumri	Talashi	469	181	Khost Wa Fereng	Dahi Masjed	315
124	Dahana-e-Ghori	Sari Kotal	468	182	Dahana-e-Ghori	Madras Lar Khawi	312
125	Baghlan-e-Jadid	Gudan	460	183	Nahrin	Jowi Bory	312
126	Baghlan-e-Jadid	Timory Payen	459	184	Andarab	Shah Kash	307
127	Pul-e- khumri	Shashsad Koti	459	185	Baghlan-e-Jadid	Bola Qeshlaq	305
128	Pul-e- khumri	Zaman Khail	454	186	Pul-e- khumri	Sarak Daham Silo	302
129	Pul-e- khumri	Guzar Tapa Shuhada	450	187	Baghlan-e-Jadid	Baghlan-e-jadid	300
130	Baghlan-e-Jadid	Ghorbandi Ha	448	188	Pul-e- khumri	Tapa Qarghan	298
131	Baghlan-e-Jadid	Qandahari (6)	440	189	Baghlan-e-Jadid	Tajek Ha Balocha	296
132	Khenjan	Khobdara	440	190	Dahana-e-Ghori	Kamperak Bala	296
133	Baghlan-e-Jadid	Chahl Ghuri	438	191	Burka	Qalich Ali	294
134	Burka	Shash Kal	434	192	Baghlan-e-Jadid	Cham Qala	292
135	Khost Wa Fereng	Yakha	430	193	Dahana-e-Ghori	Mahjeren	290
136	Pul-e- khumri	Qole Karkar Now Abad	426	194	Khost Wa Fereng	Barak	290
137	Burka	Chapa	420	195	Baghlan-e-Jadid	Aq Qol	289
138	Burka	Tangi Murch	420	196	Khwajahejran	Ghori Sang	287
139	Dahana-e-Ghori	Charmab	420	197	Khost Wa Fereng	Khoshdara	277
140	Pul-e- khumri	Saqi	420	198	Doshi	Choqorak	272
141	Dahana-e-Ghori	Tajeka Qomandan Shir Ali	419	199	Pul-e- khumri	Bibi A'ina (1)	272
142	Tala Wa barfak	Dahan Marq	417	200	Burka	Saqow	265
143	Pul-e- khumri	Khoja Alwan Hai Noman	413				
144	Baghlan-e-Jadid	Qazi	410				
145	Burka	Saha Zar Lark	410				
146	Dahana-e-Ghori	Changa Ali	409				
147	Pul-e- khumri	Tagharha	402				
148	Pul-e- khumri	Guzar Khanjane Ha	402				
149	Doshi	Sang Sorakh Bala	394				
150	Khenjan	Dahan Yakhak	394				
151	Doshi	Now Abad Chail Kaba	393				
152	Baghlan-e-Jadid	Arab Ha	382				
153	Burka	Shorachah(1)	381				
154	Baghlan-e-Jadid	Khowja Khan Baba	380				
155	Nahrin	Sheen Dara	379				
156	Baghlan-e-Jadid	Kohastani Ha	377				
157	Pul-e- khumri	Shamraq Lab Sarak	374				
158	Baghlan-e-Jadid	Qara Barq	372				
159	Pul-e- khumri	Wardak chashma I Shair	372				
160	Doshi	Qar Hamat	368				
161	Pul-e- khumri	Islam Abad	366				