



ABOUT DTM

The Displacement Tracking Matrix (DTM) is a system that tracks and monitors displacement and population mobility. It is designed to regularly and systematically capture, process and disseminate information to provide a better understanding of the movements and evolving needs of displaced populations, whether on site or en route. For more information about the DTM, please visit www.displacement.iom.int/afghanistan.

In Afghanistan, DTM employs the Baseline Mobility Assessment tool, designed to track mobility, determine the population sizes and locations of forcibly displaced people, reasons for displacement, places of origin, displacement locations and times of displacement, including basic demographics, as well as vulnerabilities and priority needs. Data is collected at the settlement level, through key informant interviews, focus group discussions, and direct observations.

This provincial report summarises the DTM findings in Balkh. The data has been collected throughout 16 districts and 600 settlements in Balkh. This provincial report is supplementary to its nationwide counterpart, please see: Baseline Mobility Assessment Summary Results (November – December 2017).

DTM enables IOM and its partners to deliver evidence-based, better targeted, mobility-sensitive and sustainable humanitarian assistance, reintegration, community stabilization and development programming.

5 TARGET POPULATIONS

Through the Baseline Mobility Assessments, DTM tracks the locations, population sizes, and cross-sectoral needs of the five core target population categories:

1. Returnees from Abroad
2. Out-Migrants
Internally Displaced Persons (IDPs), subdivided into the following three categories:
3. Arrival IDPs
4. Returnee IDPs
5. Fled IDPs

Data on population sizes for the 5 target population categories is collected by time of displacement, using each of the following time frames: 2012-2015 • 2016 • 2017.

HIGHLIGHTS



16 districts assessed

600 settlements assessed

in Balkh, Charbulak, Charkent, Chemtal, Dawlatabad, Dehdadi, Kaldar, Keshendeh, Khulm, Marmul, Mazar-e-Sharif, Nahr-e-Shahi, Sharak-e-Hayratan, Sholgareh, Shortepa and Zari



2,913

key informants interviewed



109,845

returnees from abroad [2012–2017]



71,662

IDPs [2012–2017] currently in host communities



19,329

former IDPs [2012–2017] have returned to their homes



79,081

out-migrants fled abroad [2012–2017]



14,787

out-migrants fled to Europe (19% of out-migrants)



2,079

returnees and IDPs live in tents or in the open air (1% of total returnees and IDPs)



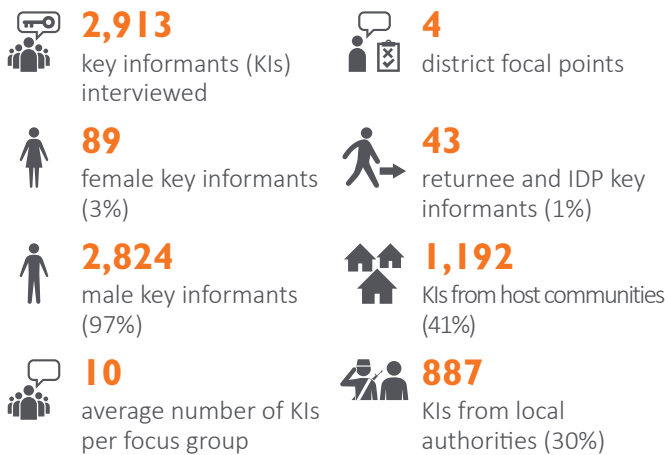
1 in 5

persons from Keshendeh and Zari is either an IDP or a Returnee

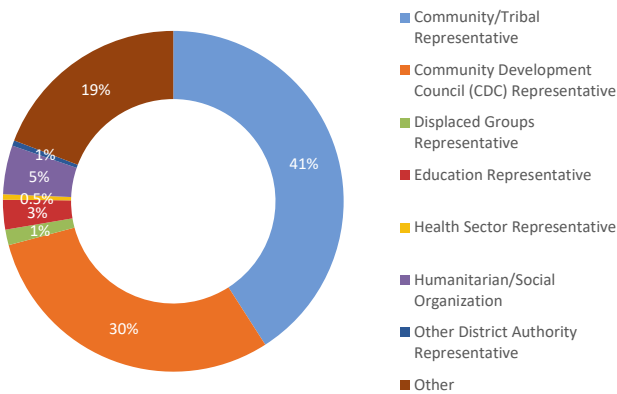
KEY INFORMANTS

DTM's field enumerators, District Focal Points (DFPs), collect data at the settlement level, predominantly through focus group discussions with key informants. The average size of focus groups is five key informants per group. In the rare case that DTM's District Focal Points cannot physically reach a community, due to insecurity, conflict, or risk of retaliation by anti-government elements, DFPs meet the focus groups at a safe place outside their communities or conduct the assessments by phone.

Significant highlights regarding the overall composition of Key Informant Focus Groups include the following:



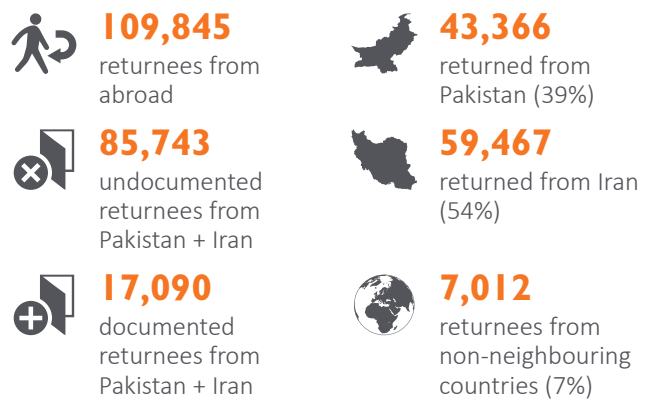
Key Informants by Type | Balkh



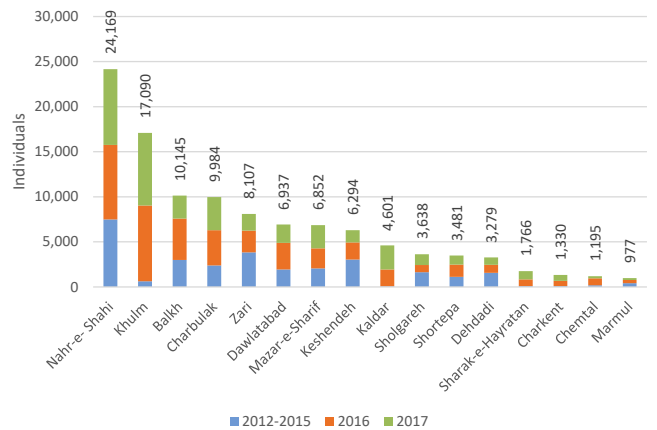
RETURNEES

Returnees are Afghan nationals who have returned to Afghanistan in the assessed location after having spent at least six months abroad. This group includes both documented returnees (Afghans who were registered refugees in host countries and then requested voluntary return with UNHCR and relevant national authorities) and undocumented returnees (Afghans who did not request voluntary return with UNHCR, but rather returned spontaneously from host countries, irrespective of whether or not they were registered refugees with UNHCR and relevant national authorities).

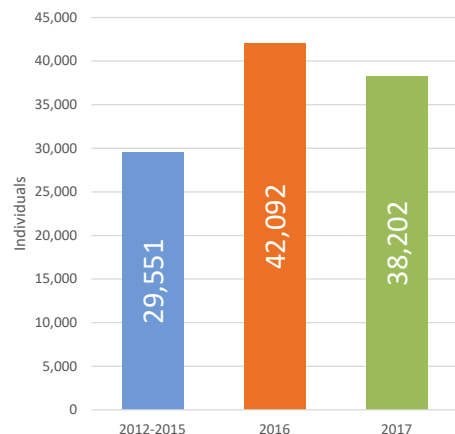
The number of returnees from abroad increased by 42% in 2016 alone, compared to the period between 2012 and 2015, followed by a 9% decrease in returnees in 2017.



Returnees from Abroad by District | Balkh



Returnees from Abroad | Annual Trends | Balkh



Balkh coordination meeting with community elders, a female key informant, IDPs and returnees © IOM 2017

IDPs

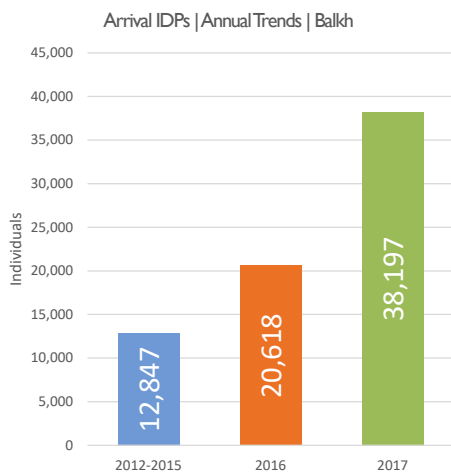
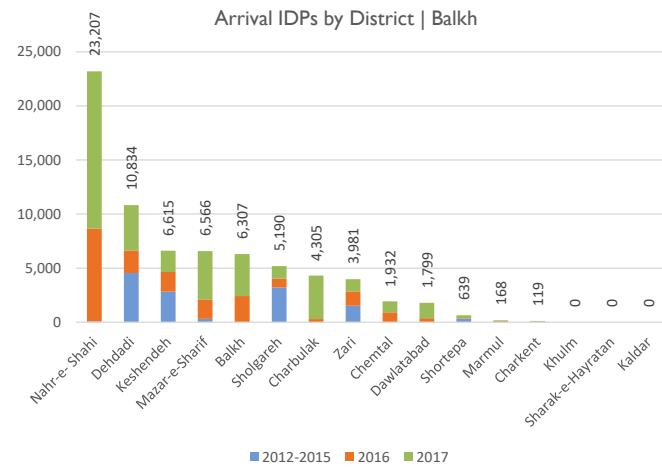
Arrival IDPs (IDPs) are Afghans who have fled from other settlements in Afghanistan and have arrived and presently reside at the assessed location / host community, as a result of, or in order to avoid, the effects of armed conflict, generalized violence, human rights violations, protection concerns, or natural and human-made disasters.

71,662
IDPs

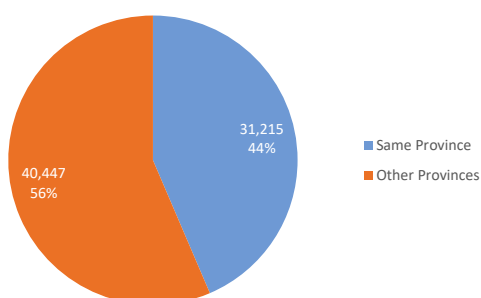
44%
IDPs relocate within their home province

87%
displaced due to conflict

13%
displaced by natural disaster



Arrival IDPs by Province of Origin | Balkh



OUT-MIGRANTS

Out-Migrants are Afghans who have moved or fled abroad from the assessed location, whatever the cause, reason or duration of expatriation. This category includes refugees, displaced and uprooted people, and economic migrants who have left Afghanistan.

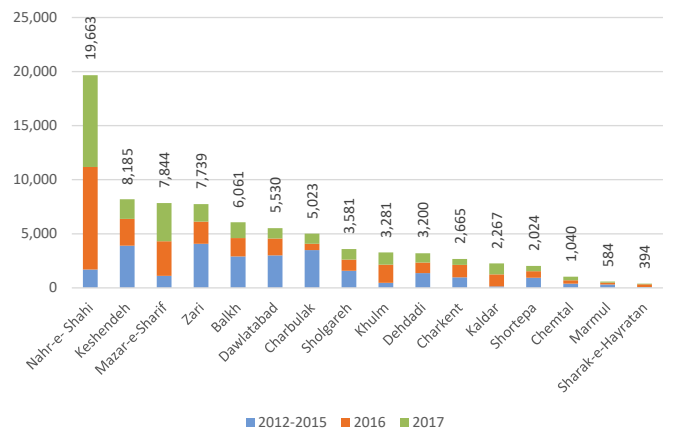
79,081
fled abroad

14,787
fled to Europe (19%)

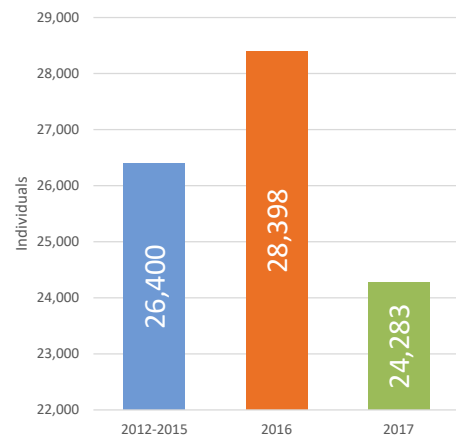
51,146
fled to Iran (65%)

12,026
fled to Pakistan (15%)

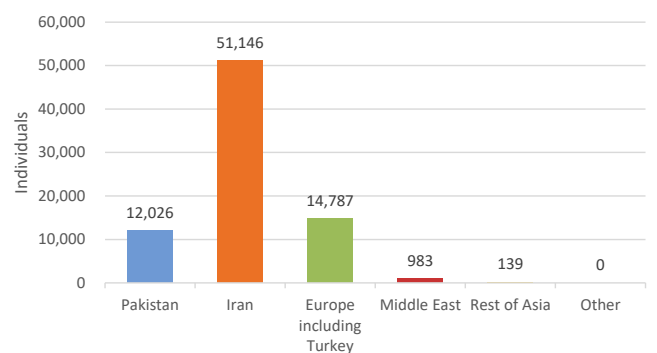
Out-Migrants by District | Balkh



Out-Migrants | Annual Trends | Balkh



Out-Migrants by Country/Region of Destination | Balkh



Displaced Individuals in all 5 Target Populations | Summary Overview by District

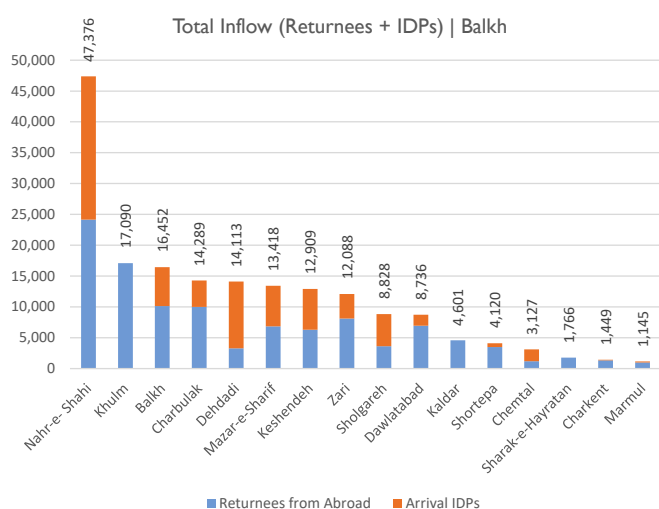
District	*Base Population	Total Inflow (Returnees + Arrival IDPs)	% of Pop.	Returnees	% of Pop.	Returnee IDPs	% of Pop.	Arrival IDPs	% of Pop.	Fled IDPs	% of Pop.	Out Migrants	% of Pop.
Balkh	124,558	16,452	12%	10,145	7%	1,603	1%	6,307	4%	154	0%	6,061	5%
Charbulak	84,038	14,289	15%	9,984	10%	2,933	3%	4,305	4%	210	0%	5,023	6%
Charkent	46,105	1,449	3%	1,330	3%	94	0%	119	0%	672	1%	2,665	6%
Chemtal	95,138	3,127	3%	1,195	1%	5,970	6%	1,932	2%	506	1%	1,040	1%
Dawlatabad	109,057	8,736	7%	6,937	6%	1,750	2%	1,799	2%	1,449	1%	5,530	5%
Dehdadi	70,012	14,113	17%	3,279	4%	0	0%	10,834	13%	40	0%	3,200	5%
Kaldar	20,736	4,601	18%	4,601	18%	0	0%	0	0%	0	0%	2,267	11%
Keshندهه	50,496	12,909	20%	6,294	10%	1,920	4%	6,615	10%	2,394	5%	8,185	16%
Khulm	74,990	17,090	19%	17,090	19%	0	0%	0	0%	0	0%	3,281	4%
Marmul	11,832	1,145	9%	977	8%	399	3%	168	1%	161	1%	584	5%
Mazar-e-Sharif	415,053	13,418	3%	6,852	2%	14	0%	6,566	2%	0	0%	7,844	2%
Nahr-e-Shahi	461,646	47,376	9%	24,169	5%	1,036	0%	23,207	5%	721	0%	19,663	4%
Sharake-Hayratan	N/A	1,766	N/A	1,766	N/A	0	N/A	0	N/A	0	N/A	394	N/A
Sholgareh	118,418	8,828	7%	3,638	3%	177	0%	5,190	4%	2,103	2%	3,581	3%
Shortepa	41,104	4,120	9%	3,481	8%	67	0%	639	1%	0	0%	2,024	5%
Zari	45,496	12,088	21%	8,107	14%	3,366	7%	3,981	7%	5,138	11%	7,739	17%
Total	1,768,679	181,507	9%	109,845	6%	19,329	1%	71,662	4%	13,548	1%	79,081	4%

* Base Population source: OCHA, CSO Population Estimates for 2016 to 2017, 15-AUG-2016

Symbology: > 20% of base population

Total Inflow (Returnees + IDPs) | Summary by District

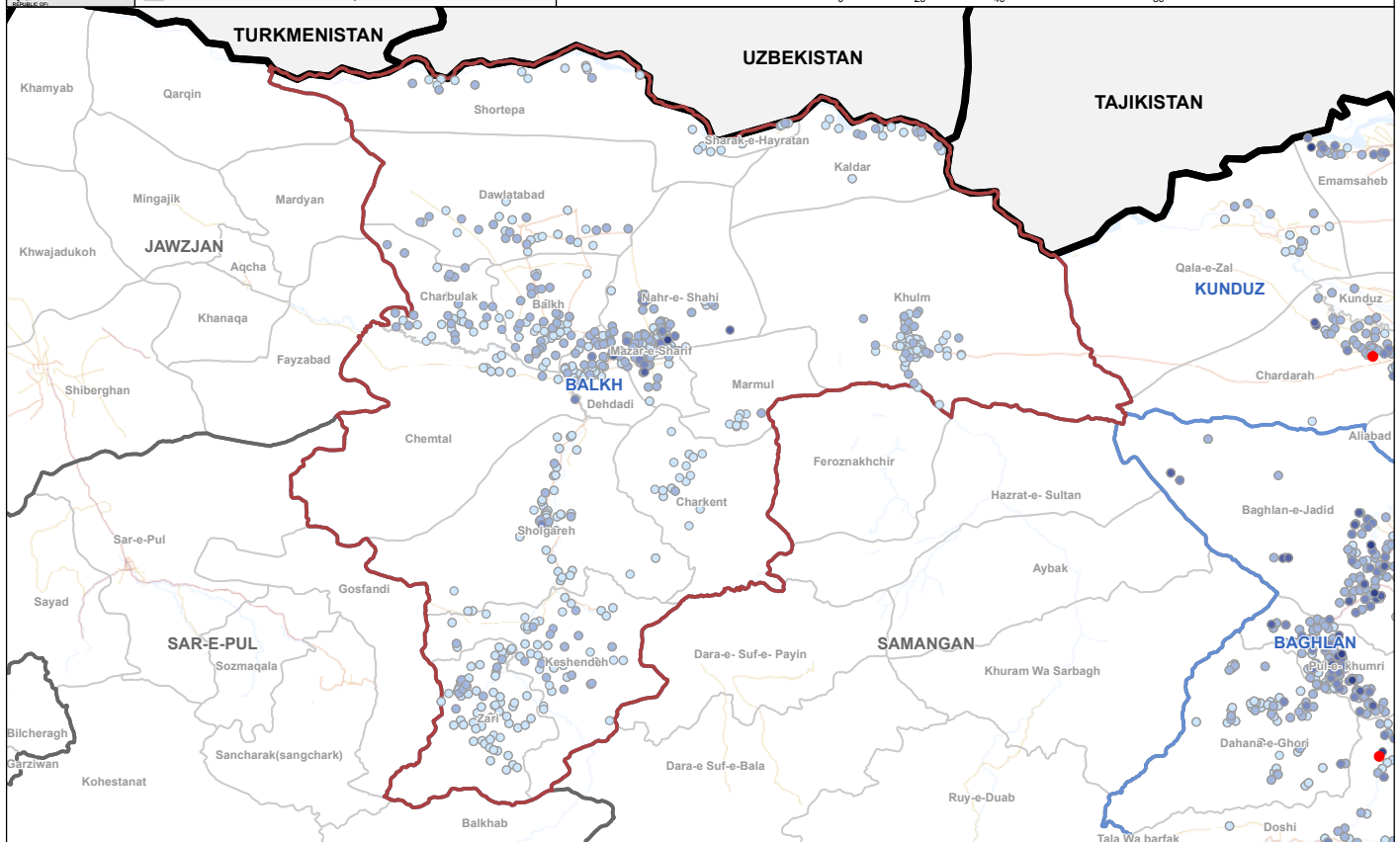
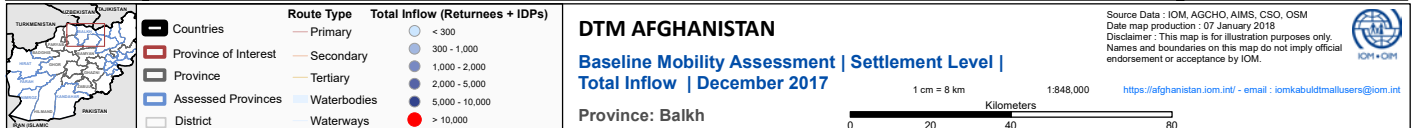
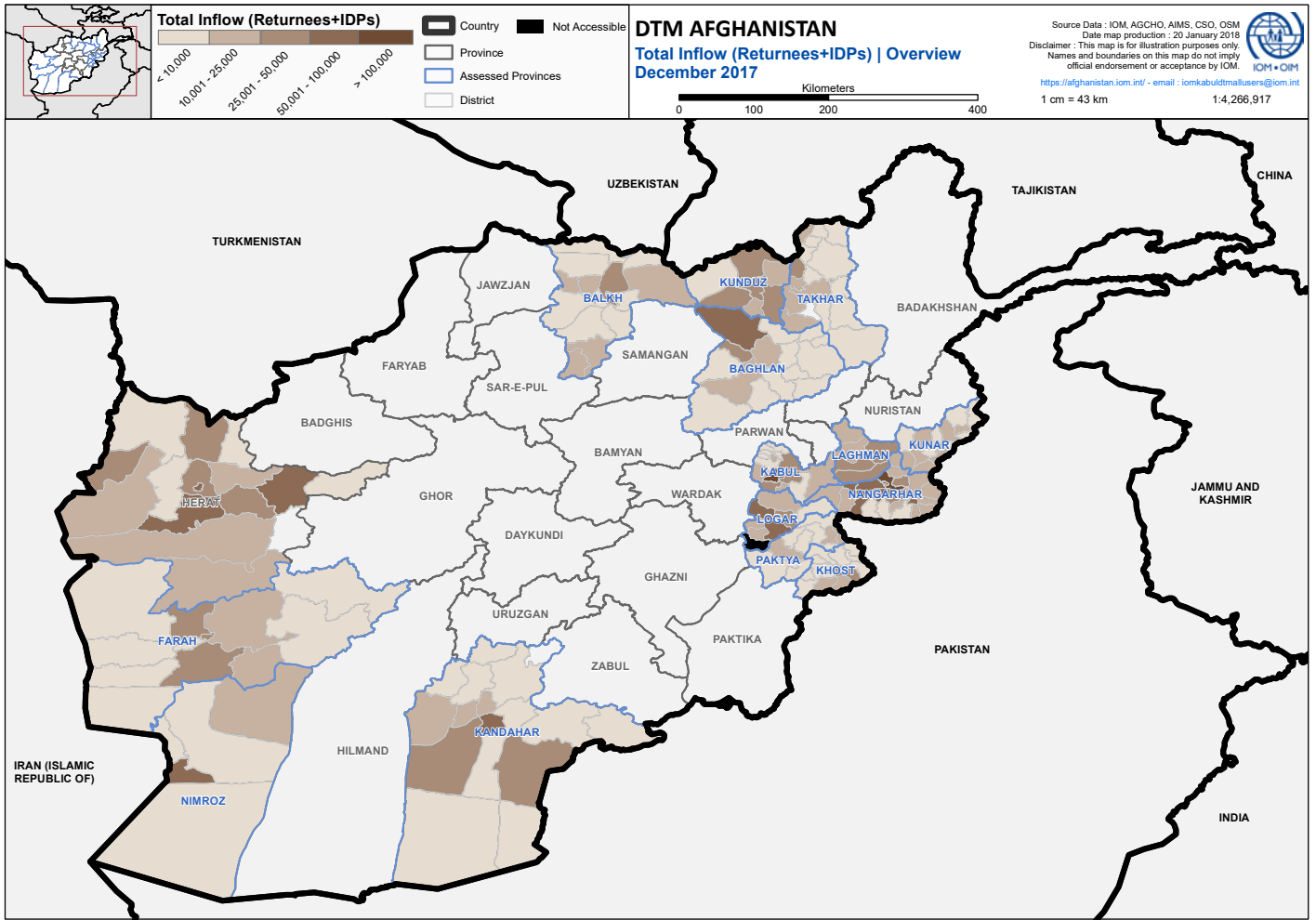
District	Returnees	Arrival IDPs	Total Inflow
Nahr-e-Shahi	24,169	23,207	47,376
Khulm	17,090	0	17,090
Balkh	10,145	6,307	16,452
Charbulak	9,984	4,305	14,289
Dehdadi	3,279	10,834	14,113
Mazar-e-Sharif	6,852	6,566	13,418
Keshندهه	6,294	6,615	12,909
Zari	8,107	3,981	12,088
Sholgareh	3,638	5,190	8,828
Dawlatabad	6,937	1,799	8,736
Kaldar	4,601	0	4,601
Shortepa	3,481	639	4,120
Chemtal	1,195	1,932	3,127
Sharake-Hayratan	1,766	0	1,766
Charkent	1,330	119	1,449
Marmul	977	168	1,145
Total	109,845	71,662	181,507



Overall, Balkh province hosts a total inflow of 81,507 returnees and IDPs, of which 61% are returnees and 39% are IDPs. The table below shows the 20 settlements that are most affected by this influx. These 20 settlements (only 3% of the 600 assessed settlements in Balkh) host 20% of the province's returnees and IDPs. These communities are especially fragile and susceptible to social instability induced by this large influx and the subsequent competition for limited, already overstretched resources and job opportunities. The most severely affected settlement is Sajadia, in the Nahr-e-Shahi district, which hosts 9,928 returnees and IDPs; 27% of the total inflow of the 20 most affected settlements, and 5% of all provincial IDPs and returnees.

Top 20 settlements hosting the most Returnees + IDPs

Settlement	District	Total Inflow
Sajadia	Nahr-e-Shahi	9,928
Kamp Sakhi	Nahr-e-Shahi	3,087
Nowabad Sheer Holya	Dehdadi	2,965
Prozhe Shahzada	Nahr-e-Shahi	2,364
Chehl Dukhtaran Sufia	Nahr-e-Shahi	1,820
Rabat Bala	Chemtal	1,458
Noor Khoda	Nahr-e-Shahi	1,385
Noor Khoda Block 2	Nahr-e-Shahi	1,195
Faqir Abad	Nahr-e-Shahi	1,194
Ansari (6)	Mazar-e-Sharif	1,188
Qubatul Islam	Mazar-e-Sharif	1,095
Karte Wahdat	Nahr-e-Shahi	1,076
Karte Khurasan	Nahr-e-Shahi	1,075
Mohajer Qeshlaq Afghanistan	Sholgareh	1,069
Nowabad Yaka Toot	Dehdadi	1,043
Taimorak Sufia	Charbulak	990
Ali Abad	Nahr-e-Shahi	985
Shahrak Holya (2)	Mazar-e-Sharif	979
Shahrak Holya	Mazar-e-Sharif	955
Shpola	Balkh	934
Total		36,785



TOP 5 DISTRICTS

Evidence-based prioritization is essential to the delivery of better targeted assistance and basic services. DTM provides partners with lists of priority areas in most need of assistance, based on a variety of sectoral indicators, at Province, District and Settlement levels.

(NOTE: The number of individuals reported below is based on the Total Inflow: IDPs + Returnees)

TOP 5 Districts with the most Returnees and IDPs (Returnees + IDPs)

Rank	District	Individuals
1	Nahr-e- Shahi	47,376
2	Khulm	17,090
3	Balkh	16,452
4	Charbulak	14,289
5	Dehdadi	14,113
Grand Total		109,320

TOP 5 in need of Shelter (IDPs + Returnees living in Tents or in the Open Air)

Rank	District	Individuals
1	Nahr-e- Shahi	1,630
2	Chemtal	391
3	Zari	53
4	Dehdadi	34
5	N/A	N/A
Grand Total		2,108

TOP 5 in need of Water (potable water > 3 km away)

Rank	District	Individuals
1	Zari	11,735
2	Khulm	6,095
3	Dawlatabad	3,327
4	Balkh	3,191
5	Kaldar	2,734
Grand Total		27,082

TOP 5 in need of Clinics (nearest clinic > 5 km away)

Rank	District	Individuals
1	Zari	10,937
2	Charbulak	8,223
3	Khulm	6,903
4	Balkh	6,784
5	Keshendeh	4,726
Grand Total		37,573

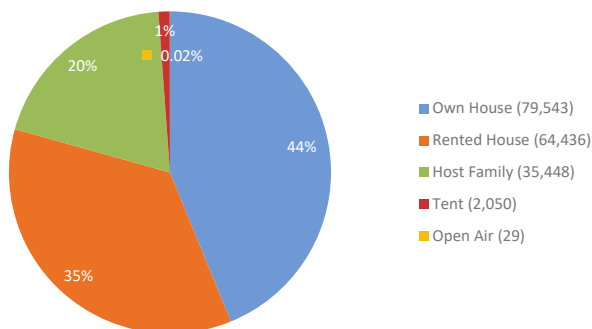
TOP 5 in need of Schools (nearest school > 3 km away)

Rank	District	Individuals
1	Nahr-e- Shahi	4,184
2	Keshendeh	2,444
3	Balkh	1,924
4	Charbulak	1,740
5	Khulm	1,449
Grand Total		11,741

TOP 5 in need of Markets (nearest market > 10 km away)

Rank	District	Individuals
1	Zari	10,920
2	Charbulak	10,691
3	Balkh	8,849
4	Keshendeh	8,093
5	Dehdadi	6,723
Grand Total		45,276

Total Inflow (Returnees+IDPs) | Shelter | Balkh



STORIES FROM THE DISPLACED

RESILIENT AND DETERMINED AFGHAN MOTHER STARTS WORKING TO SAVE MONEY TO RETURN HOME

Zahra lives with her husband and four children in a central district of Balkh province. The family are returnees from Tehran, Iran, where they moved to in 2012 and where her husband, Tariq, was employed as a factory worker. By 2014, Tariq had gathered some money, and the family decided that they wished to return home to Afghanistan. When Tariq informed his manager that he would be leaving, his manager told him that he would have to work another two years to obtain the remaining half of his salary that had been withheld from him. Tariq refused, and consequently, his employer complained to the police and had him arrested: he was jailed for two weeks.

65% of all 89,081 out-migrants from Balkh moved to Iran, many of whom seek employment opportunities. Unfortunately, labour conditions for Afghan migrants, who predominantly work in the informal sector, are very poor. Tariq is an example of an Afghan migrant who has no recourse to his human rights whilst employed in Iran: attempting to escape a situation where his employment was transforming into forced labour, he was sent to prison.

Upon his release, the family no longer had sufficient money for their planned return to Afghanistan. Tariq found daily wage work, but could not save enough. Luckily for the family, Zahra determinedly sprang into action "I decided to do something fast, and I started working in a tailoring factory where I developed well and learned to tailor quickly and fast," Zahra tells us. "I started saving money, and after just four months, we were able to return to Afghanistan."

Due to patriarchal gender norms, Afghan women are not expected to work and thus systematically excluded from the labour market. This story challenges these norms by demonstrating that a female household member in employment has the potential to lift a family out of a bad circumstance.

Back in Afghanistan, Zahra has continued working in tailoring, and her husband has found work in construction. Currently, they are living in a relative's house and are not paying rent. Zahra is hoping to continue working so that the family can rent their own home and improve their quality of living.



Fatima and her daughter are pictured in their cramped new home in Baghlan. Fatima wants to save enough money so they can move into a rental accommodation with bigger rooms.

DTM in Afghanistan is generously supported by:



ANNEX I ▪ TOP 200 SETTLEMENTS

RANKED BY TOTAL IN-FLOW [RETURNEES + IDPS]

Rank	District	Settlement	Total In-Flow	Rank	District	Settlement	Total In-Flow
1	Nahr-e- Shahi	Sajadia	9,928	53	Nahr-e- Shahi	Ali Sheer Nawaye	603
2	Nahr-e- Shahi	Kamp Sakhi	3,087	54	Balkh	Vazirabad	601
3	Dehdadi	Nowabad Sheer Holya	2,965	55	Nahr-e- Shahi	Prozhe Azadi	583
4	Nahr-e- Shahi	Prozhe Shahzada	2,364	56	Dehdadi	Pusht Bagh	578
5	Nahr-e- Shahi	Chehl Dukhtaran Sufla	1,820	57	Nahr-e- Shahi	Prozhe Khalid IBNI Walid (3)	549
6	Chemtal	Rabat Bala	1,458	58	Nahr-e- Shahi	Langar Khana Payen Khord	546
7	Nahr-e- Shahi	Noor Khoda	1,385	59	Khulm	Logari Ha	532
8	Nahr-e- Shahi	Noor Khoda Block 2	1,195	60	Dawlatabad	Dali Char Bolak	523
9	Nahr-e- Shahi	Faqir Abad	1,194	61	Dehdadi	Arab Khana Negary	523
10	Mazar-e-Sharif	Ansari (6)	1,188	62	Dehdadi	Tokhta Bala	513
11	Mazar-e-Sharif	Qubatul Islam	1,095	63	Nahr-e- Shahi	Nowabad Takht pul	511
12	Nahr-e- Shahi	Karte Wahdat	1,076	64	Khulm	Dihwarda-i- payan	507
13	Nahr-e- Shahi	Karte Khurasan	1,075	65	Khulm	Dahi Hassan	505
14	Sholgareh	Mohajer Qeshlaq Afghania	1,069	66	Khulm	Kohna Khulum	504
15	Dehdadi	Nowabad Yaka Toot	1,043	67	Balkh	Balkh	499
16	Charbulak	Taimorak Sufla	990	68	Balkh	Dahi Raze	490
17	Nahr-e- Shahi	Ali Abad	985	69	Charbulak	Nowarid Kohna Warnagha	490
18	Mazar-e-Sharif	Shahrak Holya (2)	979	70	Charbulak	Kohna Charbolak	490
19	Mazar-e-Sharif	Shahrak Holya	955	71	Nahr-e- Shahi	Karte Imam Hussain	486
20	Balkh	Shpola	934	72	Khulm	Yangi Horgh	483
21	Charbulak	Taimani Arzankar	930	73	Balkh	Hussain Khail	482
22	Mazar-e-Sharif	Block Hai 300 Meter Noor Khoda	927	74	Balkh	Hesarak	479
23	Balkh	Salar Zare	917	75	Keshنده	Qeshlaq Kalan Lalmi	477
24	Charbulak	Nauwarid (1)	902	76	Keshنده	Lor Band	474
25	Charbulak	Salbaron	892	77	Khulm	Dahi War Dahi	474
26	Balkh	Nowarid Khowja Gholak	876	78	Balkh	Eftekhar Balkh	469
27	Nahr-e- Shahi	Balkh-e-Bastan	840	79	Khulm	Bab Siddiq	469
28	Charbulak	Spen Kai	813	80	Mazar-e-Sharif	Shahrak Abo Taleb	468
29	Nahr-e- Shahi	Yaka Bagh Shair Abad	805	81	Mazar-e-Sharif	Mir Wali(2)	465
30	Dehdadi	Cheal Gazi	792	82	Nahr-e- Shahi	Itefaq 2 Arab Ha	464
31	Mazar-e-Sharif	Khatamol Anbia	787	83	Balkh	Dowagi	457
32	Nahr-e- Shahi	Karte Imam Hussain (2)	786	84	Mazar-e-Sharif	Block 3 Noor Khoda	457
33	Nahr-e- Shahi	Ali Chopan	749	85	Dawlatabad	Khoshall Abad	455
34	Nahr-e- Shahi	Aliabad (2)	749	86	Dawlatabad	Sar-i-Deh	446
35	Mazar-e-Sharif	Ansari (5)	716	87	Balkh	Mashak	445
36	Dawlatabad	Hayatan	708	88	Charkent	Yaka Tal	445
37	Nahr-e- Shahi	Noor Khoda Block (5,6)	707	89	Shortepa	Gizel Hayqa	445
38	Charbulak	Adena Masjed	701	90	Nahr-e- Shahi	Karte Khurasan (2)	438
39	Nahr-e- Shahi	Wali Asre	700	91	Mazar-e-Sharif	Mir Wali	436
40	Nahr-e- Shahi	Hemat Abad	698	92	Sholgareh	Qaicha NowAbad Imam Bokhari	432
41	Charbulak	Labak	681	93	Sharak-e- Hayratan	Hayratan	431
42	Khulm	Wal Jato	671	94	Mazar-e-Sharif	Sayed Ismael Balkhi	430
43	Dawlatabad	Sadar Abad Payen	669	95	Charbulak	Bos Tepa	429
44	Balkh	Samar Qandeyan	665	96	Balkh	Kashkak	425
45	Nahr-e- Shahi	Sayed Abad	664	97	Charbulak	Naqelin Arzankar	423
46	Dehdadi	Dahi Sawar	656	98	Balkh	Nowarid Boka	421
47	Dehdadi	Jowi Shahr	656	99	Balkh	Borya Baf	420
48	Nahr-e- Shahi	Kaj Gozar	631	100	Dehdadi	Qou Taimor	419
49	Dehdadi	Nowabad Merzayi Sheerabad	630	101	Charbulak	Choba Karnail Khail Taimorak	417
50	Balkh	Kata Khail	622	102	Kaldar	Jowi Jadid	417
51	Khulm	Haji Ali Arabi	611	103	Keshنده	Kata Gardan	417
52	Nahr-e- Shahi	Nowabad Itefaq Arab Ha	603	104	Balkh	Dahi Qazi	410

Rank	District	Settlement	Total In-Flow
105	Khulm	Khoja Burhan Afghania Haji Fatah	410
106	Keshنده	Kohna Qeshlaq	409
107	Keshنده	Shah Polad(Ghushwataq)	407
108	Dawlatabad	Darabad	406
109	Marmul	Gharmaqz Sai	402
110	Keshنده	Aq Kamar	401
111	Sholgareh	Qourbaqa Khana Marboma	400
112	Dehdadi	Kar Malik	396
113	Sholgareh	Dahan Kam	396
114	Balkh	Boka	395
115	Khulm	Nowabad Baghat Gul	390
116	Keshنده	Sar Darakht	388
117	Balkh	Qarlaq	385
118	Nahr-e- Shahi	Shaikhabad	385
119	Balkh	Mohmandan	384
120	Khulm	Mula Noor Mohammad	383
121	Mazar-e-Sharif	Abo Alisina Balkhi	383
122	Charbulak	Tourtega Wa Mosh Khorya	382
123	Charbulak	Barlawak	382
124	Charbulak	Nowarid Wacha Wana	380
125	Chemtal	Sar Asiyab	380
126	Nahr-e- Shahi	Dasht Shor	380
127	Dehdadi	Shaikh Abad	376
128	Keshنده	Awmkai Afghania	376
129	Dawlatabad	Qara Ghajla Watani	372
130	Nahr-e- Shahi	Saadat No 3	371
131	Nahr-e- Shahi	Nasrat Abad	371
132	Nahr-e- Shahi	Karte Solh	370
133	Dehdadi	Sheer Mast	369
134	Kaldar	Chaqar	369
135	Keshنده	Ali Kahi	367
136	Khulm	Qarya Mullah	365
137	Khulm	Gozar Baghacha Abdul Nazar	365
138	Nahr-e- Shahi	Yaka Toot	364
139	Dawlatabad	Qafan	363
140	Keshنده	Sarab (2)	363
141	Nahr-e- Shahi	Qala Hajer	361
142	Sholgareh	Mohajer Qeshlaq Holya	361
143	Nahr-e- Shahi	Prozhe S	357
144	Dawlatabad	Yakhdan	356
145	Charbulak	Sabo Sakhur Taimorak	354
146	Khulm	Dahi Now	354
147	Sholgareh	Bagh Pahlawan	351
148	Balkh	NowAbad Haji Peyada	350
149	Charbulak	Kohna Warnagha	349
150	Dawlatabad	Qara Ghajla Mahjer	348
151	Charbulak	Nowarid Wacha Wana Kandahari	346
152	Keshنده	Bariki	345
153	Kaldar	Haq Masjid	343
154	Nahr-e- Shahi	Dawlatabad	343
155	Kaldar	Khoja Kakoldar	342
156	Sholgareh	Torpaghly	341
157	Mazar-e-Sharif	Block Hai Hawaye (1)	339
158	Kaldar	Kaldar (1)	336
159	Khulm	Guzar Mullah Sultan	336
160	Dawlatabad	Chahi	335

Rank	District	Settlement	Total In-Flow
161	Keshنده	Sar Kotal Qayamat	332
162	Dawlatabad	Khair Abad Watani	327
163	Balkh	Gozar Jawanmard Qasab	322
164	Shortepa	Chor Aragh	322
165	Zari	Zirwazan	321
166	Dawlatabad	Kotarma	320
167	Dehdadi	Baba Kohna	320
168	Zari	Belandareq Bala	319
169	Nahr-e- Shahi	Karte Mowla Ali	318
170	Khulm	Shash Paikal Afghanya Chelduzd	317
171	Charbulak	Qourache	316
172	Zari	Gawo	315
173	Mazar-e-Sharif	Karte Bureshna	311
174	Nahr-e- Shahi	Prozhe Khalid IBNI Walid	311
175	Nahr-e- Shahi	Prozhe T	310
176	Zari	Arab	310
177	Dehdadi	Pul Babo	309
178	Khulm	Chetgari	308
179	Nahr-e- Shahi	Jowk Sham	308
180	Zari	Qazaq Bala	308
181	Zari	Ghola	308
182	Balkh	Seya Qandouq	307
183	Dehdadi	Mashi	307
184	Zari	Bolan Haraq Payan	303
185	Balkh	Nowabad Sardaran Haji Peyada	302
186	Balkh	Shahab Uzbek Ha	302
187	Keshنده	Chaghzar Chakana	302
188	Keshنده	Dom Barikak	302
189	Nahr-e- Shahi	Nowabad DowlatAbad	302
190	Dehdadi	Qala Habas Khan	301
191	Shortepa	Dali (1)	301
192	Zari	Rashkan	301
193	Chemtal	Asiyab Sharaf	300
194	Keshنده	Acha Maily	299
195	Mazar-e-Sharif	Nowshad (3)	299
196	Balkh	Halim Khail	297
197	Kaldar	Tazlaq Payen	297
198	Khulm	Shah Mardan Qul	296
199	Kaldar	Tazah Aregh	293
200	Shortepa	Choop Bash	291