



Pakistani refugee camp among their destroyed homes in Gurbuz district of Khost © IOM 2017

ABOUT DTM

The Displacement Tracking Matrix (DTM) is a system that tracks and monitors displacement and population mobility. It is designed to regularly and systematically capture, process and disseminate information to provide a better understanding of the movements and evolving needs of displaced populations, whether on site or en route. For more information about the DTM, please visit www.displacement.iom.int/afghanistan.

In Afghanistan, DTM employs the Baseline Mobility Assessment tool, designed to track mobility, determine the population sizes and locations of forcibly displaced people, reasons for displacement, places of origin, displacement locations and times of displacement, including basic demographics, as well as vulnerabilities and priority needs. Data is collected at the settlement level, through key informant interviews, focus group discussions, and direct observations.

This provincial report summarises the DTM findings in Khost. The data has been collected throughout 13 districts and 584 settlements in Khost. This provincial report is supplementary to its nationwide counterpart, please see: Baseline Mobility Assessment Summary Results (November – December 2017).

DTM enables IOM and its partners to deliver evidence-based, better targeted, mobility-sensitive and sustainable humanitarian assistance, reintegration, community stabilization and development programming.

5 TARGET POPULATIONS

Through the Baseline Mobility Assessments, DTM tracks the locations, population sizes, and cross-sectoral needs of the five core target population categories:

1. Returnees from Abroad
2. Out-Migrants
 - Internally Displaced Persons (IDPs), subdivided into the following three categories:
3. Arrival IDPs
4. Returnee IDPs
5. Fled IDPs

Data on population sizes for the 5 target population categories is collected by time of displacement, using each of the following time frames: 2012-2015 • 2016 • 2017.

HIGHLIGHTS



13 districts assessed

584 settlements assessed

in Bak, Gurbuz, Jajimaydan, Khost, Madozayi, Mushakhel, Nadirshahkot, Qalandar, Sabari, Shamal, Spera, Tani and Terezayi



3,252

key informants interviewed



66,353

returnees from abroad [2012–2017]



56,207

IDPs [2012–2017] currently in host communities



13,926

former IDPs [2012–2017] have returned to their homes



19,395

out-migrants fled abroad [2012–2017]



1,018

out-migrants fled to Europe (5% of out-migrants)



682

returnees and IDPs live in tents or in the open air (1% of total returnees and IDPs)



2 in 5

persons from Qalandar has fled their home as an IDP



1 in 3

persons from Gurbuz is either an IDP or a Returnee



1 in 4

persons from Khost (Matun) and Tani is either a Returnee or an IDP



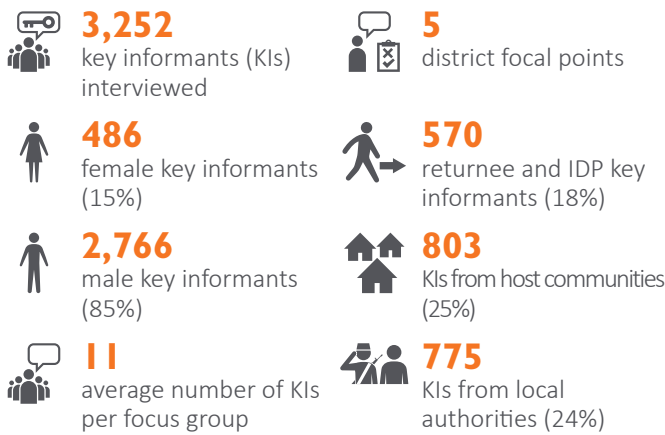
1 in 4

persons from Gurbuz is a Returnee

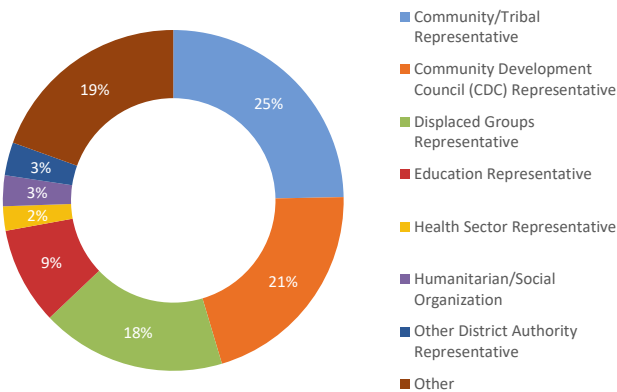
KEY INFORMANTS

DTM’s field enumerators, District Focal Points (DFPs), collect data at the settlement level, predominantly through focus group discussions with key informants. The average size of focus groups is five key informants per group. In the rare case that DTM’s District Focal Points cannot physically reach a community, due to insecurity, conflict, or risk of retaliation by anti-government elements, DFPs meet the focus groups at a safe place outside their communities or conduct the assessments by phone.

Significant highlights regarding the overall composition of Key Informant Focus Groups include the following:



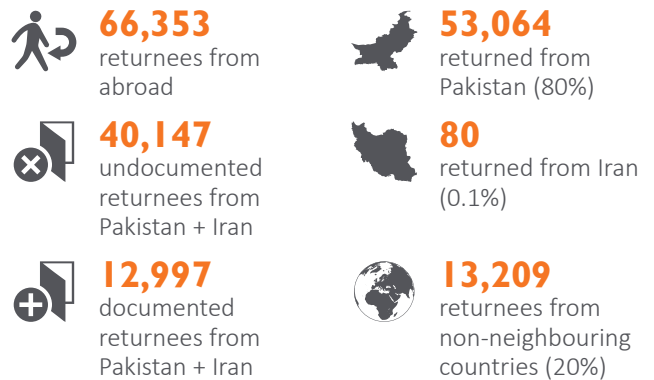
Key Informants by Type | Khost



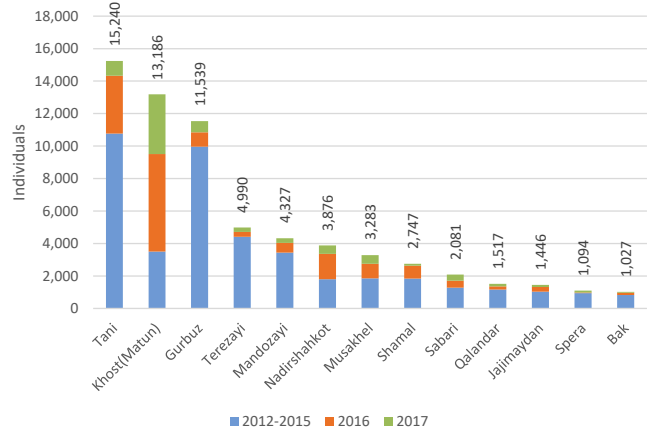
RETURNEES

Returnees are Afghan nationals who have returned to Afghanistan in the assessed location after having spent at least six months abroad. This group includes both documented returnees (Afghans who were registered refugees in host countries and then requested voluntary return with UNHCR and relevant national authorities) and undocumented returnees (Afghans who did not request voluntary return with UNHCR, but rather returned spontaneously from host countries, irrespective of whether or not they were registered refugees with UNHCR and relevant national authorities).

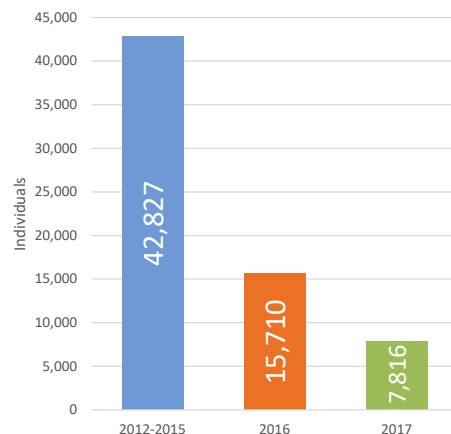
The number of returnees from abroad to Khost has been steadily decreasing. From the period between 2012 and 2015 to the period of 2016, the number of returnees decreased by 63%, followed by an additional 50% decrease in returnees in 2017.



Returnees from Abroad by District | Khost



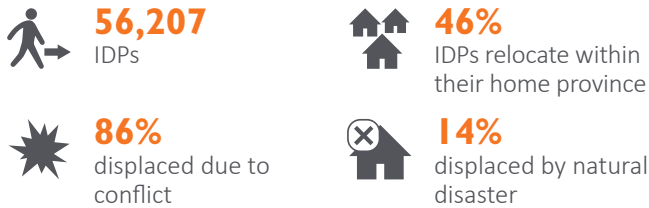
Returnees from Abroad | Annual Trends | Khost



DTM strives to attain balanced and inclusive representation of returnees and IDPs in key informant group discussions to better assess their needs, access to essential services, and social cohesion. In Khost, 18% of focus group participants are returnees and IDPs. © IOM 2017

 IDPs

Arrival IDPs (IDPs) are Afghans who have fled from other settlements in Afghanistan and have arrived and presently reside at the assessed location / host community, as a result of, or in order to avoid, the effects of armed conflict, generalized violence, human rights violations, protection concerns, or natural and human-made disasters.

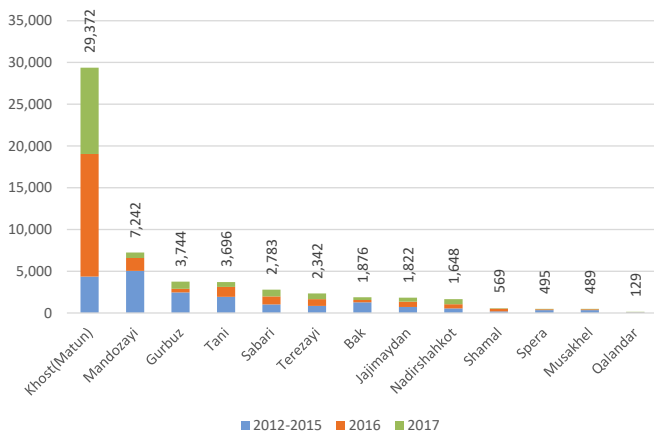


 OUT-MIGRANTS

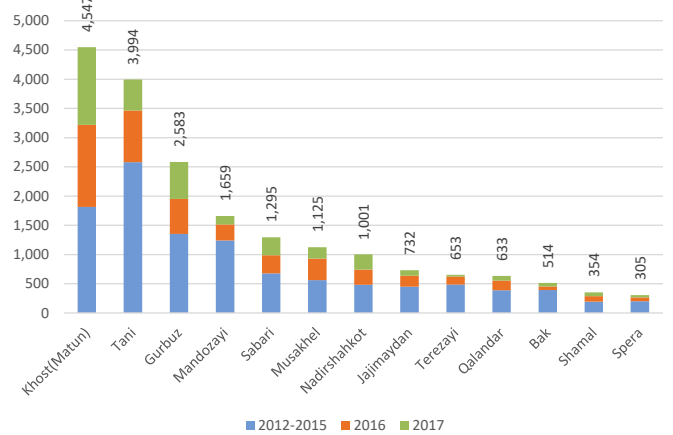
Out-Migrants are Afghans who have moved or fled abroad from the assessed location, whatever the cause, reason or duration of expatriation. This category includes refugees, displaced and uprooted people, and economic migrants who have left Afghanistan.



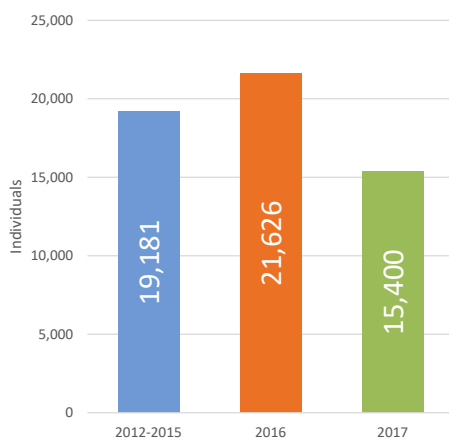
Arrival IDPs by District | Khost



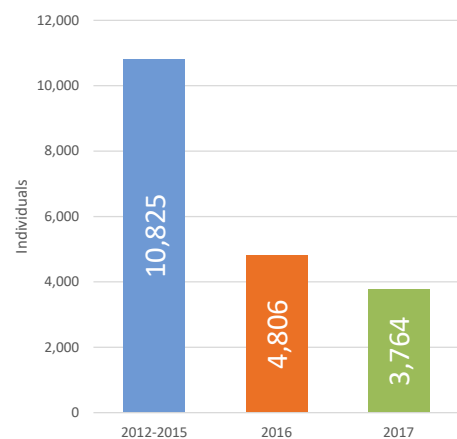
Out-Migrants by District | Khost



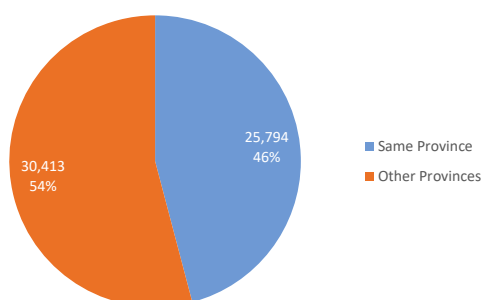
Arrival IDPs | Annual Trends | Khost



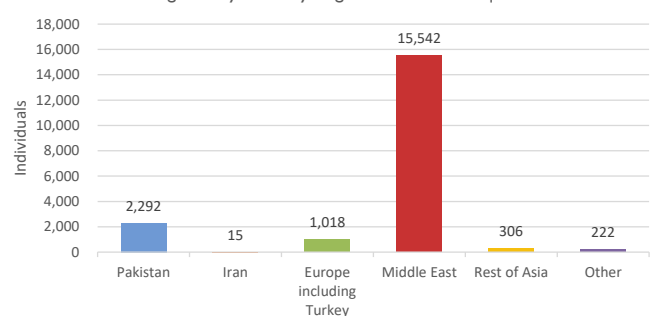
Out-Migrants | Annual Trends | Khost



Arrival IDPs by Province of Origin | Khost



Out-Migrants by Country/Region of Destination | Khost



Displaced Individuals in all 5 Target Populations | Summary Overview by District

District	*Base Population	Total Inflow (Returnees + Arrival IDPs)	% of Pop.	Returnees	% of Pop.	Returnee IDPs	% of Pop.	Arrival IDPs	% of Pop.	Fled IDPs	% of Pop.	Out Migrants	% of Pop.
Bak	22,930	2,903	11%	1,027	4%	298	1%	1,876	7%	1,482	6%	514	2%
Gurbuz	27,200	15,283	36%	11,539	27%	2,548	9%	3,744	9%	1,946	7%	2,583	9%
Jajimaydan	25,004	3,268	12%	1,446	5%	188	1%	1,822	6%	1,525	6%	732	3%
Khost (Matun)	143,026	42,558	23%	13,186	7%	912	1%	29,372	16%	6,930	5%	4,547	3%
Mandozayi	58,546	11,569	17%	4,327	6%	1,056	2%	7,242	10%	2,896	5%	1,659	3%
Musakhel	42,568	3,772	8%	3,283	7%	240	1%	489	1%	3,715	9%	1,125	3%
Nadirshahkot	33,054	5,524	14%	3,876	10%	645	2%	1,648	4%	1,578	5%	1,001	3%
Qalandar	10,612	1,646	13%	1,517	12%	415	4%	129	1%	4,159	39%	633	6%
Sabari	73,549	4,864	6%	2,081	3%	668	1%	2,783	4%	2,491	3%	1,295	2%
Shamal	14,149	3,316	19%	2,747	16%	991	7%	569	3%	2,114	15%	354	3%
Spera	25,248	1,589	6%	1,094	4%	764	3%	495	2%	2,345	9%	305	1%
Tani	61,840	18,936	23%	15,240	19%	3,823	6%	3,696	5%	6,777	11%	3,994	6%
Terezayi	46,349	7,332	14%	4,990	9%	1,378	3%	2,342	4%	3,834	8%	653	1%
Total	584,075	122,560	17%	66,353	9%	13,926	2%	56,207	8%	41,792	7%	19,395	3%

* Base Population source: OCHA, CSO Population Estimates for 2016 to 2017, 15-AUG-2016

Symbology: > 20% of base population

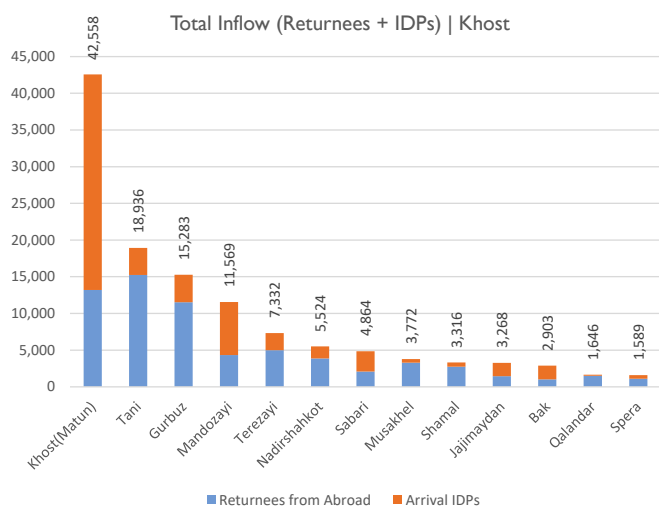
Total Inflow (Returnees + IDPs) | Summary by District

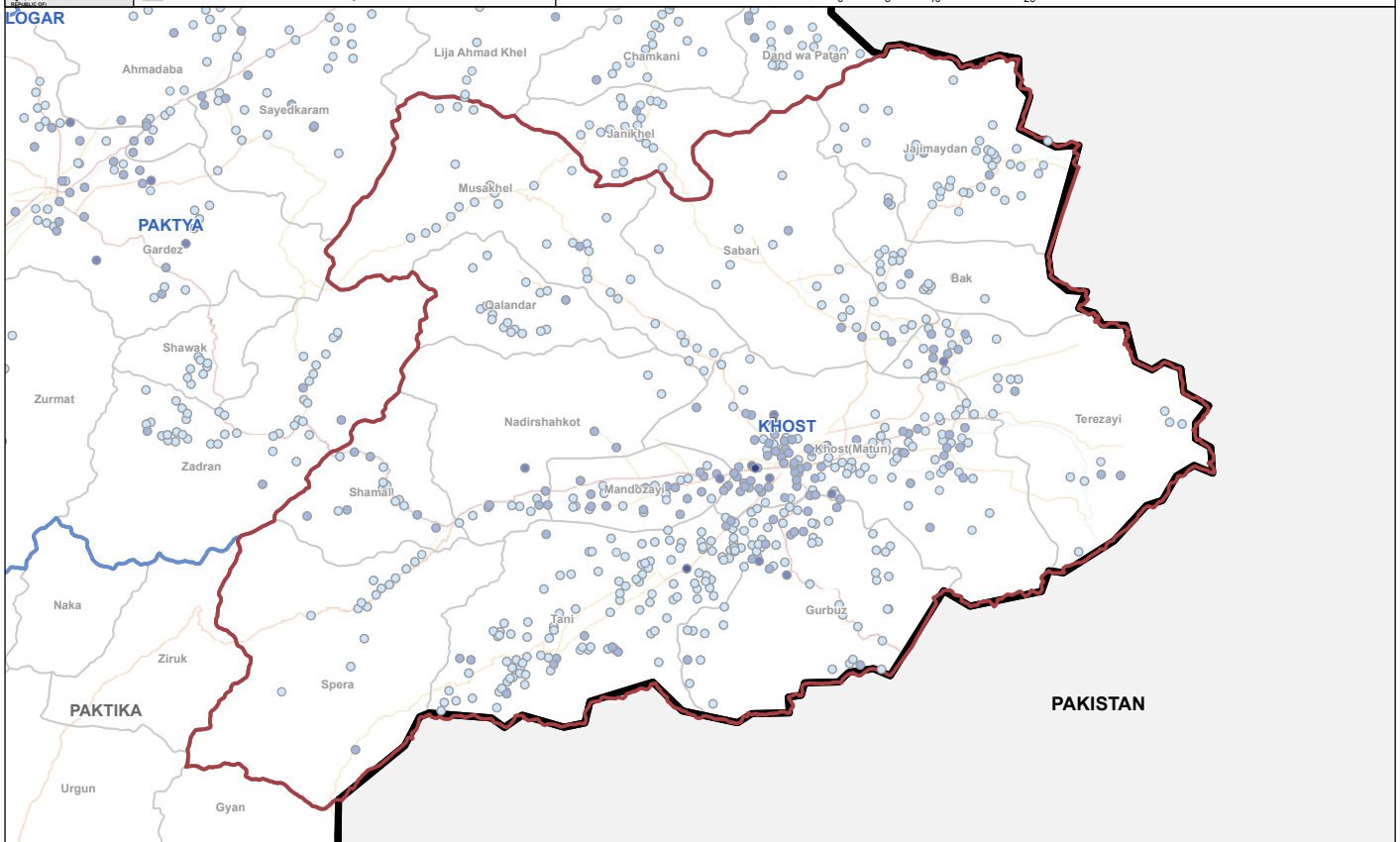
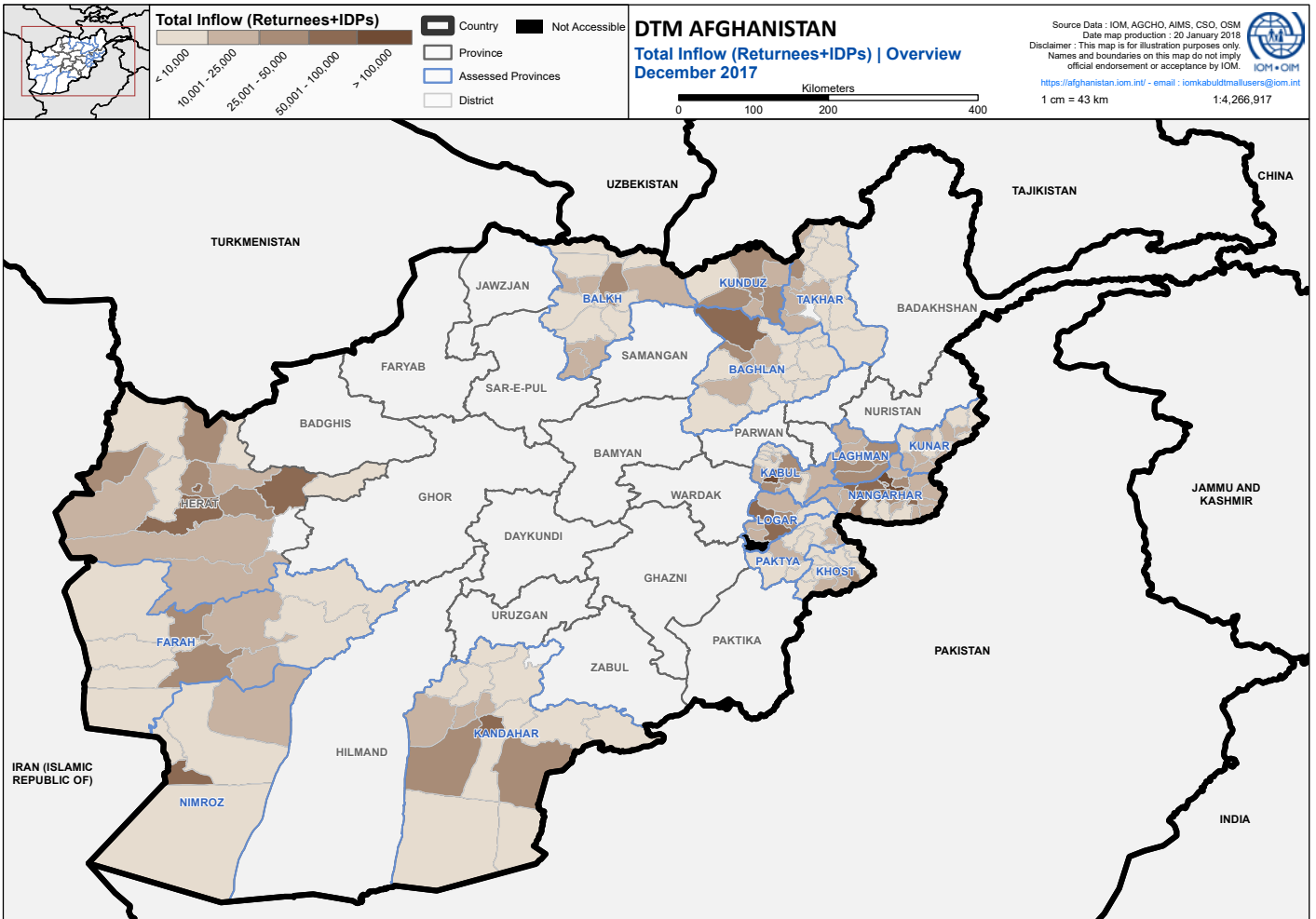
District	Returnees	Arrival IDPs	Total Inflow
Khost (Matun)	13,186	29,372	42,558
Tani	15,240	3,696	18,936
Gurbuz	11,539	3,744	15,283
Mandozayi	4,327	7,242	11,569
Terezayi	4,990	2,342	7,332
Nadirshahkot	3,876	1,648	5,524
Sabari	2,081	2,783	4,864
Musakhel	3,283	489	3,772
Shamal	2,747	569	3,316
Jajimaydan	1,446	1,822	3,268
Bak	1,027	1,876	2,903
Qalandar	1,517	129	1,646
Spera	1,094	495	1,589
Total	66,353	56,207	122,560

The table below shows the 20 settlements of Khost that host the highest numbers of IDPs and returnees (total inflow). These settlements are especially fragile and susceptible to social instability induced by the large influx of returnees and IDPs and the subsequent competition for limited, already overstretched resources and job opportunities. Qalamwal-mena, in Khost (Matun) district, is the most severely affected, hosting a total inflow of 4,290 returnees and IDPs, equivalent to 11% of all of the IDPs and returnees in the Khost (Matun) district.

Top 20 settlements hosting the most Returnees + IDPs

Settlement	District	Total Inflow
Qalamwal mena	Khost (Matun)	4,290
Markaz Wolluswaly Dorge	Tani	2,008
Khoni Khor	Khost (Matun)	1,690
Mushken	Nadirshahkot	1,564
Kharge Kalay	Gurbuz	1,481
Koz Belawat	Terezayi	1,442
Chara Ga	Mandozayi	1,144
Wacha khowra	Khost (Matun)	1,124
Bori Kalay	Gurbuz	1,060
Saro Kalay (1)	Mandozayi	868
Dailpuri	Mandozayi	864
Lalmi Mangal	Khost (Matun)	845
Ster Kalay Yaqubi	Sabari	829
Kharsen	Khost (Matun)	810
Mohammad Sayid Gul Kalay	Gurbuz	802
Ali Wat	Mandozayi	796
Lewan Khail	Sabari	765
Qal'a-i Hindu	Khost (Matun)	760
Segai	Tani	744
Dosaraka Melan	Mandozayi	738
Total		24,624





TOP 5 DISTRICTS

Evidence-based prioritization is essential to the delivery of better targeted assistance and basic services. DTM provides partners with lists of priority areas in most need of assistance, based on a variety of sectoral indicators, at Province, District and Settlement levels.

(NOTE: The number of individuals reported below is based on the Total Inflow: IDPs + Returnees)

TOP 5 Districts with the most Returnees and IDPs (Returnees + IDPs)

Rank	District	Individuals
1	Khost(Matun)	42,558
2	Tani	18,936
3	Gurbuz	15,283
4	Mandozayi	11,569
5	Terezayi	7,332
Grand Total		95,678

TOP 5 in need of Shelter (IDPs + Returnees living in Tents or in the Open Air)

Rank	District	Individuals
1	Khost(Matun)	500
2	Nadirshahkot	151
3	Gurbuz	38
4	Tani	35
5	Bak	0
Grand Total		724

TOP 5 in need of Water (potable water > 3 km away)

Rank	District	Individuals
1	Tani	819
2	Khost(Matun)	590
3	Mandozayi	337
4	Jajimaydan	262
5	Gurbuz	158
Grand Total		2,166

TOP 5 in need of Clinics (nearest clinic > 5 km away)

Rank	District	Individuals
1	Khost(Matun)	14,964
2	Gurbuz	7,468
3	Tani	6,904
4	Sabari	3,594
5	Mandozayi	2,761
Grand Total		35,691

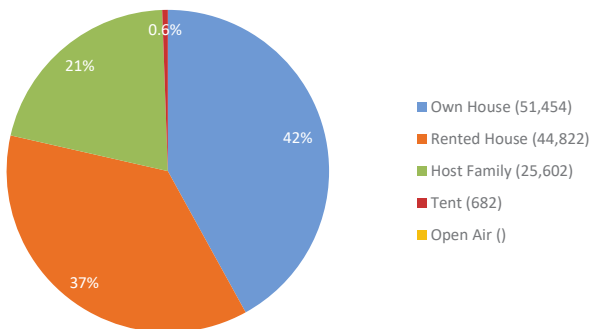
TOP 5 in need of Schools (nearest school > 3 km away)

Rank	District	Individuals
1	Khost(Matun)	8,708
2	Gurbuz	8,031
3	Tani	1,488
4	Shamal	1,330
5	Sabari	842
Grand Total		20,399

TOP 5 in need of Markets (nearest market > 10 km away)

Rank	District	Individuals
1	Gurbuz	5,026
2	Khost(Matun)	2,802
3	Musakhel	2,420
4	Nadirshahkot	4,540
5	Tani	5,139
Grand Total		19,927

Total Inflow (Returnees+IDPs) | Shelter | Khost



STORIES FROM THE DISPLACED

AJAB GUL - INTERNALLY DISPLACED AFTER THE DEATH OF HIS TWO SONS.

Ajab Gul is one of the many Afghans whose livelihoods have been destroyed by terrorist and insurgent groups. Currently displaced in Khost, he comes from Kunar; a Western province of Afghanistan which has been severely impacted by violence and insecurity.

On September 2017, Ajab received a life-changing phone call from an ISIS commander. He was told that his eldest son had been killed and that they had a warrant for his death, along with the rest of his family. His family had been accused of spying on ISIS for the Afghan government.

“After getting that phone call, I fell on the ground unconscious for a long time,” Ajab tearfully told us. “When I opened my eyes, I was at home, and everybody was crying and asking me to bring my son’s corpse to them, but I couldn’t reach my son anymore.”

Two months later, ISIS murdered Ajab’s second son while he was looking after a flock of sheep. Ajab tells us, “I suffered doomsday, before my death on Earth.”

With two murdered children and under the threat of further violence from ISIS, Ajab gathered his remaining family and fled to the Khost province. He has settled in a small village of Khost and informs us that he has been warmly welcomed by its inhabitants, who have provided him with shelter, food stamps and a job as an on-site guard for a clinic. He tells us that he is very grateful for the kindness of the locals in Khost.

Currently, he is living with his wife, two daughters-in-law, two daughters and five grandchildren. Suffering from levels of grief that are unfathomable to most, it is evident that his family desperately need a period of security and stability to rebuild their lives. They are also likely to require copious mental and emotional support from health professionals; services that are severely lacking for vulnerable IDPs and returnees in Afghanistan.



Ajab Gul and his large family huddle around their small unfurnished home

DTM in Afghanistan is generously supported by:



ANNEX I ▪ TOP 200 SETTLEMENTS

RANKED BY TOTAL IN-FLOW [RETURNEES + IDPS]

Rank	District	Settlement	Total In-Flow	Rank	District	Settlement	Total In-Flow
1	Khost(Matun)	Qalamwal mena	4,290	53	Khost(Matun)	Zari Tarkha	468
2	Tani	Markaz Wolluswaly Dorge	2,008	54	Shamal	Kamal Khail	468
3	Khost(Matun)	Khoni Khor	1,690	55	Khost(Matun)	Naikam Kunda	466
4	Nadirshahkot	Mushken	1,564	56	Gurbuz	Mohammad Hassan Teka Dar	465
5	Gurbuz	Kharge Kalay	1,481	57	Khost(Matun)	Koryan (1)	465
6	Terezayi	Koz Belawat	1,442	58	Sabari	Gorchak	463
7	Mandozayi	Chara Ga	1,144	59	Khost(Matun)	Goda Khara	460
8	Khost(Matun)	Wacha khowra	1,124	60	Qalandar	Sorkohwan	454
9	Gurbuz	Bori Kalay	1,060	61	Khost(Matun)	Baloch kalay	450
10	Mandozayi	Saro Kalay (1)	868	62	Nadirshahkot	Elmarah	443
11	Mandozayi	Dailpuri	864	63	Khost(Matun)	Sarkay Khail	442
12	Khost(Matun)	Lalmi Mangal	845	64	Terezayi	Debay kalay	440
13	Sabari	Ster Kalay Yaqubi	829	65	Tani	Per Samid	434
14	Khost(Matun)	Kharsen	810	66	Terezayi	Lalami kalay	434
15	Gurbuz	Mohammad Sayid Gul Kalay	802	67	Tani	Nareza Kaido Khail	429
16	Mandozayi	Ali Wat	796	68	Khost(Matun)	Twishipol	420
17	Sabari	Lewan Khail	765	69	Terezayi	Ster Kalay (1)	416
18	Khost(Matun)	Qal'a-i Hindu	760	70	Bak	Totak	415
19	Tani	Segai	744	71	Khost(Matun)	Majan kalay	413
20	Mandozayi	Dosaraka Melan	738	72	Terezayi	Salim baba	411
21	Gurbuz	Shaikh Amir Kalay	726	73	Khost(Matun)	Gangena	410
22	Gurbuz	Zadran Kalay	710	74	Khost(Matun)	Bazar Kalay	410
23	Khost(Matun)	Dab Kalay	705	75	Khost(Matun)	Kunda	409
24	Khost(Matun)	Bash Khail	682	76	Gurbuz	Tanri Ya Neyazi Khail	405
25	Khost(Matun)	1200 Family	663	77	Khost(Matun)	Wurdakhel	400
26	Khost(Matun)	Dar Kotte	660	78	Mandozayi	Dakano Kalay	400
27	Khost(Matun)	Sarkay Taizha	630	79	Nadirshahkot	Nawi Kott	400
28	Khost(Matun)	Shagi kalay	617	80	Mandozayi	Lalmi Kalay (1)	398
29	Terezayi	Jowna Ghondi	614	81	Tani	Sakandarkhail	395
30	Tani	Kochon	606	82	Shamal	Sor Kani	390
31	Terezayi	Youri Kalay	595	83	Mandozayi	Sar bani	386
32	Khost(Matun)	Kulab	591	84	Nadirshahkot	Khowja Rahim	384
33	Khost(Matun)	Saran kott	590	85	Bak	Zery Khawrey	380
34	Khost(Matun)	Kotoly Kalay	590	86	Shamal	Allo Khail	380
35	Gurbuz	Marmana Kalay	566	87	Khost(Matun)	Rasoolkhan kalay	377
36	Nadirshahkot	Sahya nawi kott	561	88	Khost(Matun)	Kajar Kalay	375
37	Khost(Matun)	Tapa	550	89	Mandozayi	Pera Khail	375
38	Tani	Eissa Khail	546	90	Spera	Sra Kanda	375
39	Nadirshahkot	Zornawi kott	538	91	Tani	Gosha	373
40	Gurbuz	Ghondi Kalay	532	92	Mandozayi	Barkhan Khail	371
41	Khost(Matun)	Peshi Kala	525	93	Khost(Matun)	Mardi Khail	370
42	Gurbuz	Mangal	518	94	Khost(Matun)	Zagi kalay	360
43	Gurbuz	Shodeka Kalay	515	95	Tani	Nareza	360
44	Khost(Matun)	Asar	511	96	Sabari	Gedro Kalay	352
45	Khost(Matun)	Tanday	510	97	Bak	Bar Tarakay	351
46	Mandozayi	Degan	508	98	Khost(Matun)	Bar Koryan	350
47	Mandozayi	Payenda Khail	508	99	Khost(Matun)	Mahdikhel	350
48	Khost(Matun)	Mata Chena	500	100	Khost(Matun)	Takhtabeg	340
49	Mandozayi	Mohammad Hassan	500	101	Khost(Matun)	Landi Kalay (2)	340
50	Jajimaydan	Mughol Khail	494	102	Khost(Matun)	Wargha Kalay	340
51	Musakhel	Zor Kot	494	103	Khost(Matun)	Khazako sam	340
52	Khost(Matun)	Khost	480	104	Mandozayi	Zanzaye	337

Rank	District	Settlement	Total In-Flow	Rank	District	Settlement	Total In-Flow
105	Nadirshahkot	Sham Bawat	337	163	Tani	Toura Tezha	247
106	Khost(Matun)	Shinkay	332	164	Khost(Matun)	Zandakhel	245
107	Khost(Matun)	Bache Kalay	330	165	Tani	Munda Ta	245
108	Khost(Matun)	Khan Dar	330	166	Khost(Matun)	Ghazi Abad	243
109	Khost(Matun)	Tobay	330	167	Qalandar	Ster Kot	243
110	Khost(Matun)	Badiye Khail	330	168	Jajimaydan	Sewakay	241
111	Terezayi	Hayatullah kalay	330	169	Tani	Eid Gul Kalay	241
112	Nadirshahkot	Lumra	327	170	Khost(Matun)	Abdul Hakim Kalay	240
113	Tani	Sari Kalay	324	171	Tani	Yatmani Kalay	239
114	Gurbuz	Mir Jan Kalay	322	172	Mandozayi	Chandar Khail	238
115	Shamal	Anar Bagh	322	173	Musakhel	Manzani Kalay	236
116	Shamal	Khowja Kott	321	174	Khost(Matun)	Shakara Kalay	235
117	Tani	Sangari	321	175	Gurbuz	Jan Shareh Kalay	234
118	Shamal	Ster Kas	320	176	Jajimaydan	Sete Wan	234
119	Gurbuz	Samak Kotkay	317	177	Jajimaydan	Aka Khail Kalay	234
120	Gurbuz	Sarkhi Kalay	314	178	Tani	Juma Khan Kalay	233
121	Mandozayi	Ar Khail	311	179	Khost(Matun)	Penza	230
122	Khost(Matun)	Shah Baz Khan Kalay	310	180	Khost(Matun)	Tang Tang	230
123	Khost(Matun)	Pirano Kalay (1)	310	181	Khost(Matun)	Moqbel Kalay	230
124	Terezayi	Zara Ghondi	310	182	Sabari	Khore Kala	229
125	Khost(Matun)	Loye Baburi	307	183	Khost(Matun)	Patak	223
126	Tani	Shabo Khail	305	184	Khost(Matun)	Choghi	222
127	Khost(Matun)	Mohammad Ayoub Khan	302	185	Shamal	Dangar Kalay	221
128	Gurbuz	Mangi Kalay	301	186	Khost(Matun)	Malkondi	220
129	Mandozayi	Melani	301	187	Tani	Speendad	217
130	Khost(Matun)	Cholan	300	188	Spera	Kotaki	216
131	Khost(Matun)	Pankzai	300	189	Tani	Dina shah kalay	216
132	Khost(Matun)	Kamar Kala	300	190	Khost(Matun)	Ayoub Khail	212
133	Mandozayi	Setra Kalay	299	191	Khost(Matun)	Pukhano Kalay	210
134	Tani	Soni Kalay	299	192	Khost(Matun)	Khatakay Kalay	210
135	Bak	Pahlawan Khel	298	193	Tani	Zahir Kalay	210
136	Sabari	Mola Kalay	295	194	Tani	Nareza nawi kalay	209
137	Musakhel	Paro Khail	292	195	Gurbuz	Mashi Kalay	208
138	Tani	Kumaki Mana	292	196	Gurbuz	Zarin Kalay	206
139	Mandozayi	Baran Khail	289	197	Tani	Laghar Peran	206
140	Musakhel	Ghajar Loshte	286	198	Gurbuz	Shaikhan Kalay	202
141	Jajimaydan	Spem Kalay	283	199	Khost(Matun)	Pashano Kalay	200
142	Tani	Gul Qadam Wa Zal Kala	283	200	Sabari	Karoro Kalay	200
143	Tani	Zenda Khail	281				
144	Gurbuz	Sargali	280				
145	Sabari	Sawzak Kala	279				
146	Mandozayi	Samawat	271				
147	Sabari	Chena	266				
148	Nadirshahkot	Kapri Nader Shah Kott	263				
149	Gurbuz	Kumake Zan Shora	262				
150	Khost(Matun)	Ali Daye	260				
151	Khost(Matun)	Bori	260				
152	Tani	Hesarak	259				
153	Terezayi	Zadran	255				
154	Khost(Matun)	Toura Wari	253				
155	Musakhel	Kohgay Kalay	253				
156	Qalandar	Kamran	253				
157	Khost(Matun)	Omer Khan Kalay	251				
158	Gurbuz	Lage Khail	250				
159	Khost(Matun)	Bada Khail	250				
160	Khost(Matun)	Neyazi Kalay	250				
161	Mandozayi	Khan Kalay	250				
162	Tani	Naysaray	250				