



A landscape dominated by tents of displaced Afghans. Khogyani district, Nangarhar © IOM 2018

ABOUT DTM

The Displacement Tracking Matrix (DTM) is a system that tracks and monitors displacement and population mobility. It is designed to regularly and systematically capture, process and disseminate information to provide a better understanding of the movements and evolving needs of displaced populations, whether on site or en route. For more information about the DTM, please visit www.displacement.iom.int/afghanistan.

In Afghanistan, DTM employs the Baseline Mobility Assessment tool, designed to track mobility, determine the population sizes and locations of forcibly displaced people, reasons for displacement, places of origin, displacement locations and times of displacement, including basic demographics, as well as vulnerabilities and priority needs. Data is collected at the settlement level, through key informant interviews, focus group discussions, and direct observations.

This provincial report summarises the DTM findings in Nangarhar. The data has been collected throughout 22 districts and 910 settlements in Nangarhar. This provincial report is supplementary to its nationwide counterpart, please see: Baseline Mobility Assessment Summary Results (November – December 2017).

DTM enables IOM and its partners to deliver evidence-based, better targeted, mobility-sensitive and sustainable humanitarian assistance, reintegration, community stabilization and development programming.

5 TARGET POPULATIONS

Through the Baseline Mobility Assessments, DTM tracks the locations, population sizes, and cross-sectoral needs of the five core target population categories:

1. Returnees from Abroad
2. Out-Migrants
Internally Displaced Persons (IDPs), subdivided into the following three categories:
3. Arrival IDPs
4. Returnee IDPs
5. Fled IDPs

Data on population sizes for the 5 target population categories is collected by time of displacement, using each of the following time frames: 2012-2015 • 2016 • 2017.

HIGHLIGHTS



22 districts assessed

910 settlements assessed

in Achin, Batikot, Behsud, Chaparhar, Dara-e-Nur, Dehbalala, Durbaba, Goshta, Hesarak, Jalalabad, Kama, Khogyani, Kot, Kuzkunar, Lalpur, Muhmand Dura, Nazyan, Pachieragam, Rodat, Sherzad, Shinwar and Surkhrod



4,979

key informants interviewed



499,194

returnees from abroad [2012–2017]



309,708

IDPs [2012–2017] currently in host communities



218,289

former IDPs [2012–2017] have returned to their homes



32,734

out-migrants fled abroad [2012–2017]



13,464

out-migrants fled to Europe (41% of out-migrants)



51,403

returnees and IDPs live in tents or in the open air (6% of total returnees and IDPs)



3 in 4

persons in Kot has fled their home as an IDP



1 in 2

of all Afghan IDPs and returnees from the 15 assessed provinces that live in tents or the open air are situated in Nangarhar.



1 in 3

persons from Nangarhar is either an IDP or a returnee



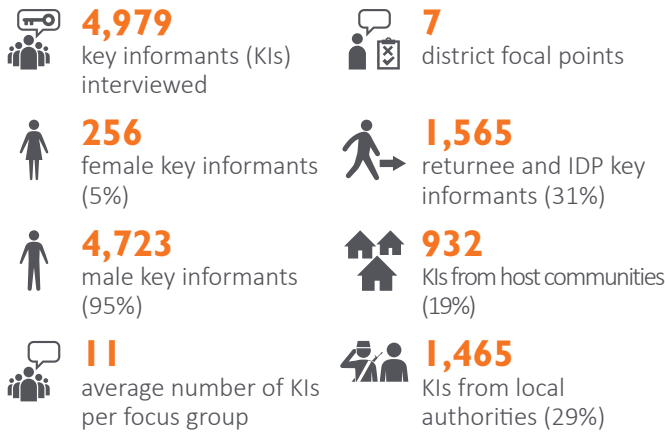
1 in 4

persons from Jalalabad is either an IDP or a returnee

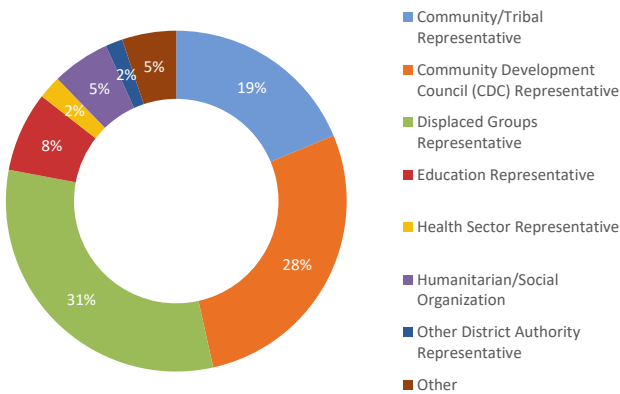
KEY INFORMANTS

DTM's field enumerators, District Focal Points (DFPs), collect data at the settlement level, predominantly through focus group discussions with key informants. The average size of focus groups in Nangarhar is eleven key informants per group. In the rare case that DTM's District Focal Points cannot physically reach a community, due to insecurity, conflict, or risk of retaliation by anti-government elements, DFPs meet the focus groups at a safe place outside their communities or conduct the assessments by phone.

Significant highlights regarding the overall composition of Key Informant Focus Groups include the following:



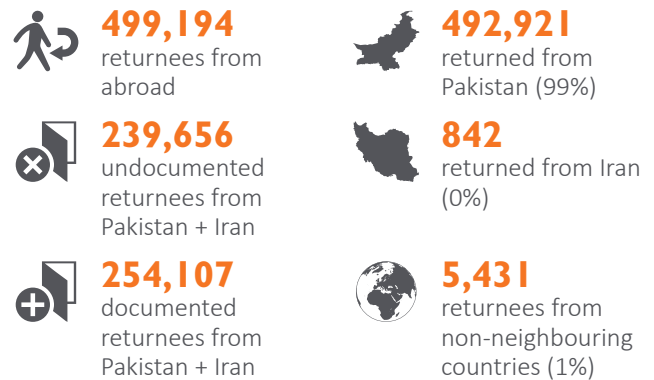
Key Informants by Type | Nangarhar



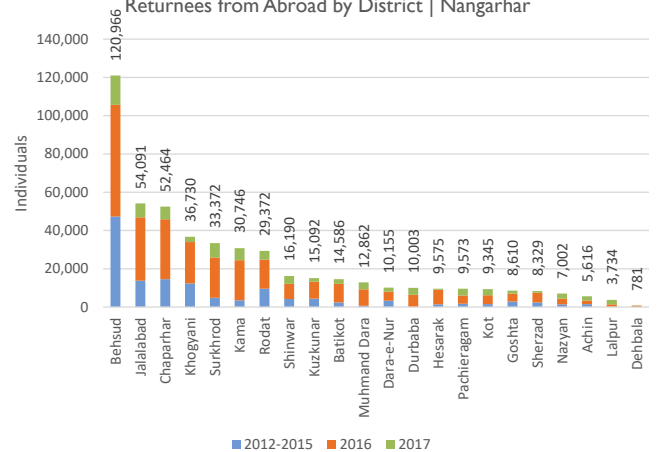
RETURNEES

Returnees are Afghan nationals who have returned to Afghanistan in the assessed location after having spent at least six months abroad. This group includes both documented returnees (Afghans who were registered refugees in host countries and then requested voluntary return with UNHCR and relevant national authorities) and undocumented returnees (Afghans who did not request voluntary return with UNHCR, but rather returned spontaneously from host countries, irrespective of whether or not they were registered refugees with UNHCR and relevant national authorities).

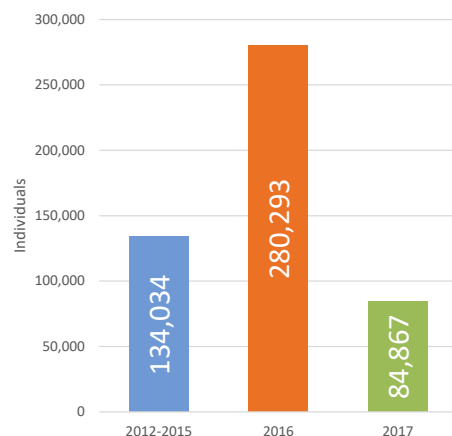
Almost all returnees in Nangarhar are from Pakistan. The number of returnees drastically increased by 109% in 2016 alone, as compared to the period between 2012-2015, followed by a large 70% reduction in returnees in 2017.



Returnees from Abroad by District | Nangarhar



Returnees from Abroad | Annual Trends | Nangarhar



One of our seven district focal points in Nangarhar collects information from key informants during a focus group discussion in the Kuzkunar district. © IOM 2017

IDPs

Arrival IDPs (IDPs) are Afghans who have fled from other settlements in Afghanistan and have arrived and presently reside at the assessed location / host community, as a result of, or in order to avoid, the effects of armed conflict, generalized violence, human rights violations, protection concerns, or natural and human-made disasters.



309,708
IDPs



83%
IDPs relocate within their home province

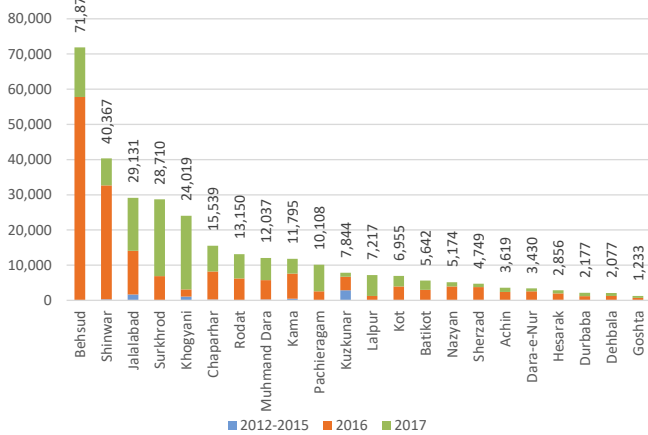


100%
displaced due to conflict



0%
displaced by natural disaster

Arrival IDPs by District | Nangarhar



OUT-MIGRANTS

Out-Migrants are Afghans who have moved or fled abroad from the assessed location, whatever the cause, reason or duration of expatriation. This category includes refugees, displaced and uprooted people, and economic migrants who have left Afghanistan.



32,734
fled abroad



13,464
fled to Europe (41%)

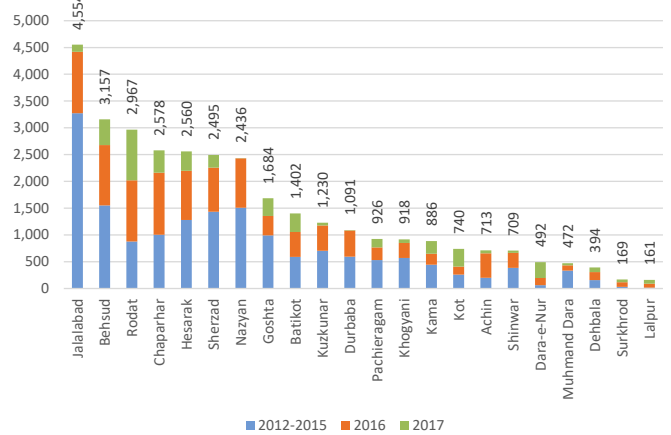


1,698
fled to Iran (5%)

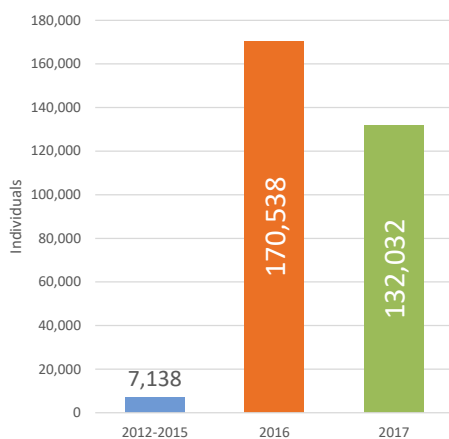


15,966
fled to Pakistan (49%)

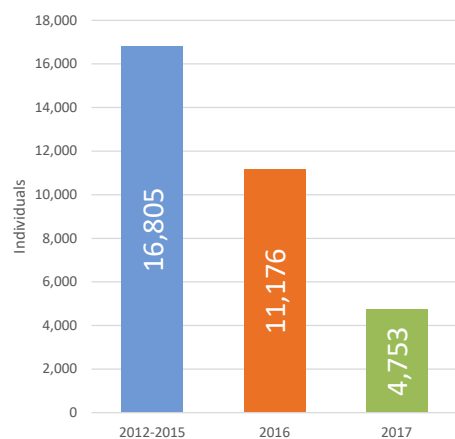
Out-Migrants by District | Nangarhar



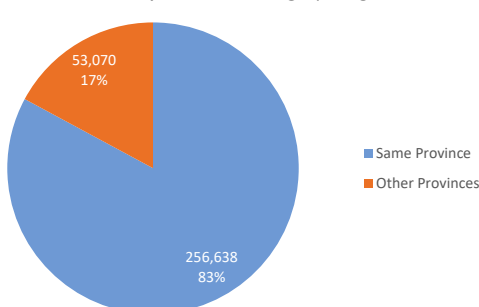
Arrival IDPs | Annual Trends | Nangarhar



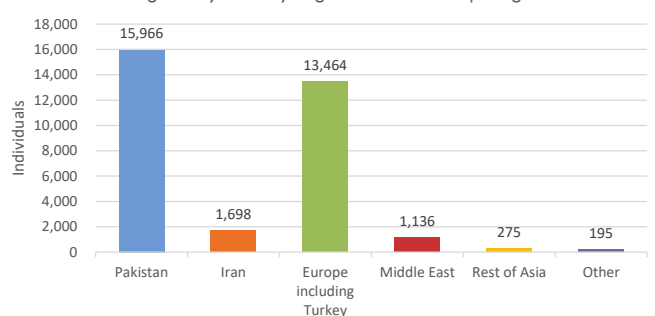
Out-Migrants | Annual Trends | Nangarhar



Arrival IDPs by Province of Origin | Nangarhar



Out-Migrants by Country/Region of Destination | Nangarhar

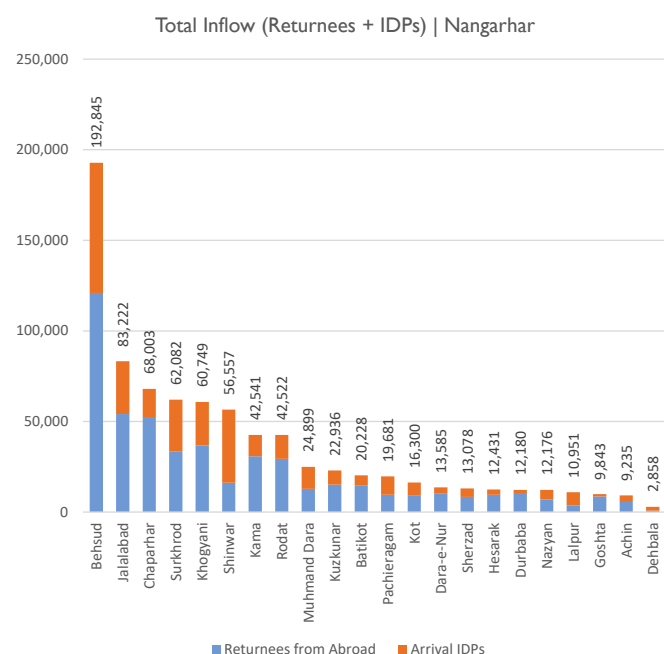


Displaced Individuals in all 5 Target Populations | Summary Overview by District | Nangarhar

District	*Base Population	Total Inflow (Returnees + Arrival IDPs)	% of Pop.	Returnees	% of Pop.	Returnee IDPs	% of Pop.	Arrival IDPs	% of Pop.	Fled IDPs	% of Pop.	Out Migrants	% of Pop.
Achin	104,042	9,235	8%	5,616	5%	26,125	25%	3,619	3%	22,339	21%	713	1%
Batikot	78,550	20,228	20%	14,586	15%	1,470	2%	5,642	6%	2,905	4%	1,402	2%
Behsud	117,946	192,845	62%	120,966	39%	1,247	1%	71,879	23%	2,018	2%	3,157	3%
Chaparhar	62,572	68,003	52%	52,464	40%	68,714	110%	15,539	12%	25,058	40%	2,578	4%
Dara-e-Nur	41,836	13,585	25%	10,155	18%	1,134	3%	3,430	6%	1,890	5%	492	1%
Dehbala	41,836	2,858	6%	781	2%	1,012	2%	2,077	5%	27,979	67%	394	1%
Durbaba	24,150	12,180	34%	10,003	28%	25,206	104%	2,177	6%	28,413	118%	1,091	5%
Goshta	28,298	9,843	26%	8,610	23%	1,099	4%	1,233	3%	1,395	5%	1,684	6%
Hesarak	31,956	12,431	28%	9,575	22%	2,574	8%	2,856	6%	16,458	52%	2,560	8%
Jalalabad	232,901	83,222	26%	54,091	17%	0	0%	29,131	9%	0	0%	4,554	2%
Kama	79,769	42,541	35%	30,746	25%	90	0%	11,795	10%	341	0%	886	1%
Khogyani	135,522	60,749	31%	36,730	19%	2,990	2%	24,019	12%	32,409	24%	918	1%
Kot	54,034	16,300	23%	9,345	13%	48,958	91%	6,955	10%	40,048	74%	740	1%
Kuzkunar	57,082	22,936	29%	15,092	19%	425	1%	7,844	10%	746	1%	1,230	2%
Lalpur	21,223	10,951	34%	3,734	12%	2,397	11%	7,217	22%	3,196	15%	161	1%
Muhmand Dara	46,593	24,899	35%	12,862	18%	1,737	4%	12,037	17%	3,314	7%	472	1%
Nazyan	15,246	12,176	44%	7,002	26%	1,522	10%	5,174	19%	4,418	29%	2,436	16%
Pachieragam	44,154	19,681	31%	9,573	15%	20,822	47%	10,108	16%	12,570	28%	926	2%
Rodat	71,719	42,522	37%	29,372	26%	2,582	4%	13,150	12%	4,291	6%	2,967	4%
Sherzad	68,792	13,078	16%	8,329	10%	6,960	10%	4,749	6%	14,150	21%	2,495	4%
Shinwar	62,206	56,557	48%	16,190	14%	1,120	2%	40,367	34%	7,960	13%	709	1%
Surkhrod	125,021	62,082	33%	33,372	18%	105	0%	28,710	15%	263	0%	169	0%
Total	1,545,448	808,902	34%	499,194	21%	218,289	14%	309,708	13%	252,161	16%	32,734	2%

* Base Population source: OCHA, CSO Population Estimates for 2016 to 2017, 15-AUG-2016

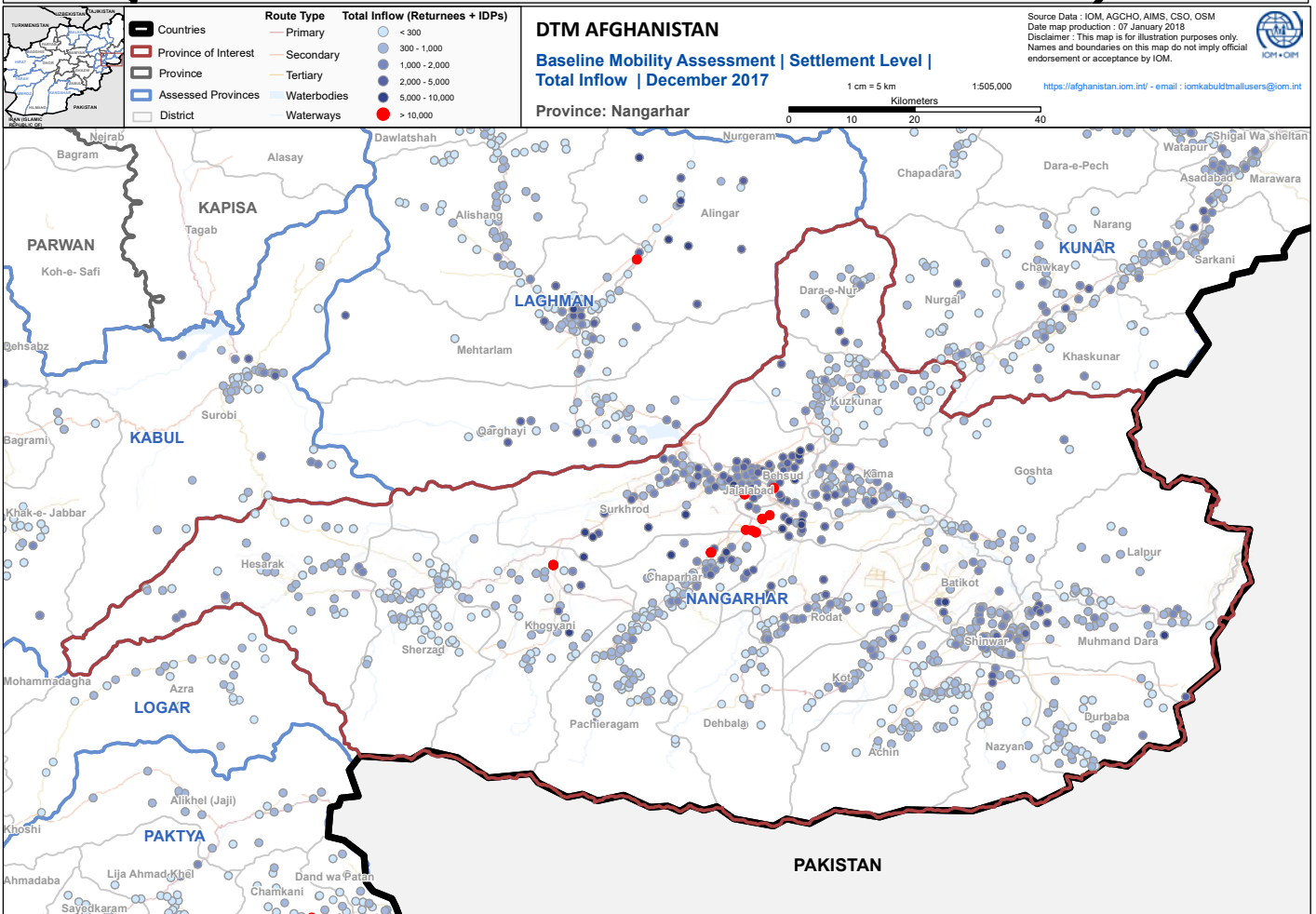
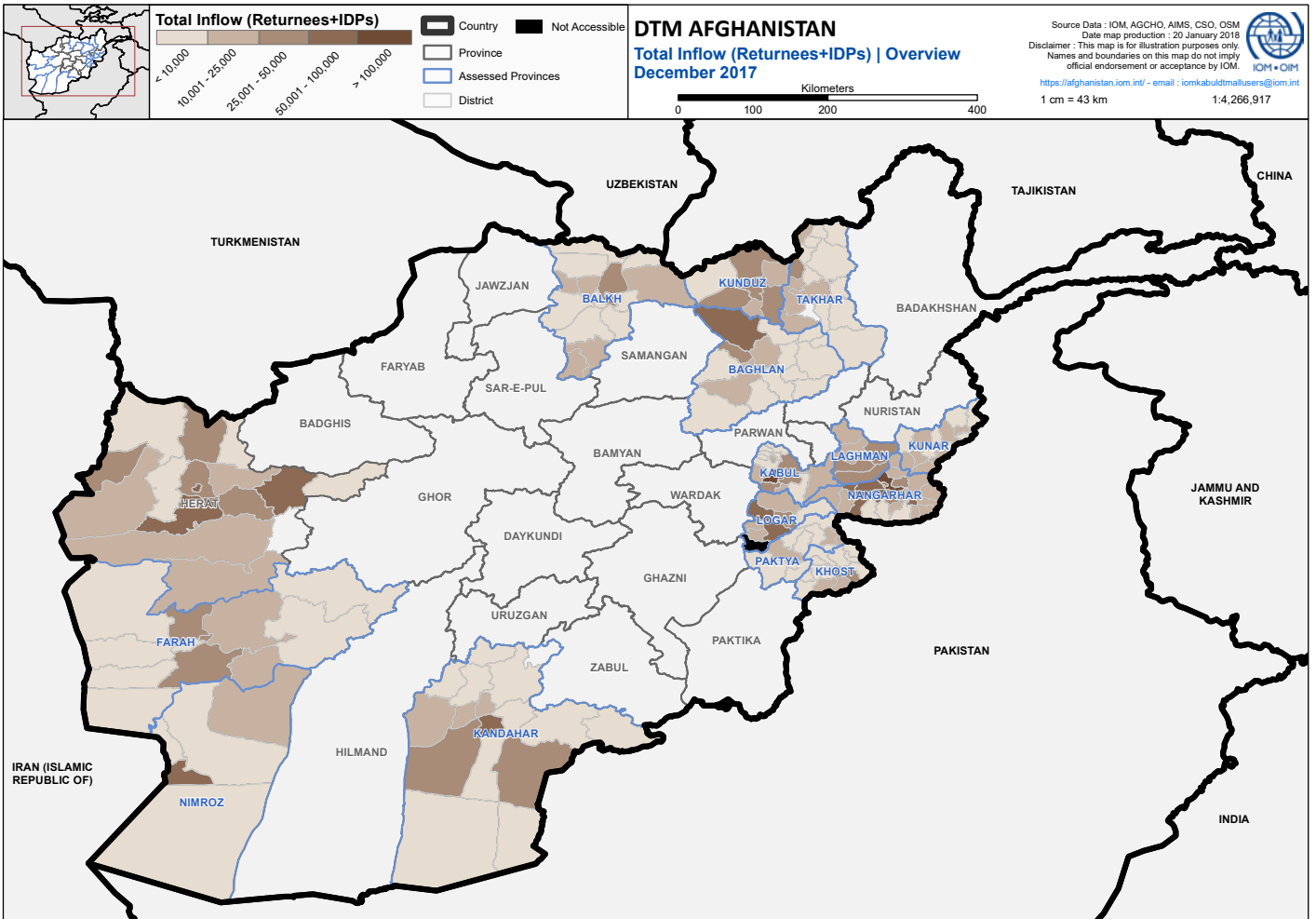
Symbology: > 20% of base population



The table below shows the 20 settlements that are most severely affected by the inflow of returnees and IDPs in Nangarhar. These 20 settlements, which account for 2% of the 910 assessed settlements in Nangarhar, host 28% of the province's inflow of returnees and IDPs.

Top 20 settlements hosting the most Returnees + IDPs

Settlement	District	Total Inflow
Chamtala	Khogyani	37,320
Khalis Family	Jalalabad	33,354
Ada	Behsud	18,460
Jowi Dahi Sharqe	Behsud	13,583
Tarkho Oba	Behsud	11,102
Dawlat Abad	Chaparhar	10,620
Kunar Safayan	Chaparhar	8,711
Jowi Yazdah	Behsud	8,665
Angur Bagh	Jalalabad	8,631
Daman	Behsud	8,553
Chamtala	Surkhrod	8,450
Jalozai	Chaparhar	8,170
Kaga	Khogyani	7,150
Karaiz Kabir	Behsud	7,071
Saracha Arabeya	Behsud	6,895
Joyi Haft	Jalalabad	6,595
Loya Daka	Muhmand Dara	6,105
Narinj Bagh	Jalalabad	5,942
Fateh Abad	Surkhrod	5,639
Beni Ga	Behsud	5,473
Total		226,489



TOP 5 DISTRICTS

Evidence-based prioritization is essential to the delivery of better targeted assistance and basic services. DTM provides partners with lists of priority areas in most need of assistance, based on a variety of sectoral indicators, at Province, District and Settlement levels.

(NOTE: The number of individuals reported below is based on the Total Inflow: IDPs + Returnees)

TOP 5 Districts with the most Returnees and IDPs (Returnees + IDPs)

Rank	District	Individuals
1	Behsud	192,845
2	Jalalabad	83,222
3	Chaparhar	68,003
4	Surkhrod	62,082
5	Khogyani	60,749
Grand Total		466,901

TOP 5 in need of Shelter (IDPs + Returnees living in Tents or in the Open Air)

Rank	District	Individuals
1	Behsud	30,584
2	Jalalabad	9,293
3	Khogyani	6,596
4	Chaparhar	3,183
5	Batikot	2,144
Grand Total		51,800

TOP 5 in need of Water (potable water > 3 km away)

Rank	District	Individuals
1	Rodat	9,166
2	Nazyan	4,466
3	Kot	3,644
4	Behsud	1,228
5	Pachieragam	931
Grand Total		19,435

TOP 5 in need of Clinics (nearest clinic > 5 km away)

Rank	District	Individuals
1	Behsud	31,757
2	Surkhrod	25,057
3	Chaparhar	18,798
4	Shinwar	15,840
5	Rodat	6,638
Grand Total		98,090

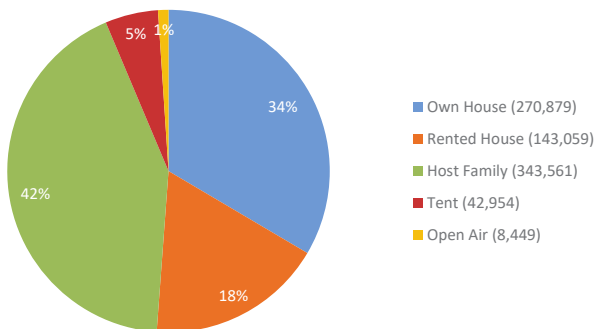
TOP 5 in need of Schools (nearest school > 3 km away)

Rank	District	Individuals
1	Behsud	26,343
2	Shinwar	11,638
3	Rodat	8,367
4	Chaparhar	4,485
5	Batikot	2,040
Grand Total		52,873

TOP 5 in need of Markets (nearest market > 10 km away)

Rank	District	Individuals
1	Durbaba	12,138
2	Batikot	6,330
3	Hesarak	5,126
4	Shinwar	4,681
5	Kuzkunar	2,781
Grand Total		31,056

Total Inflow (Returnees+IDPs) | Shelter | Nangarhar



STORIES FROM THE DISPLACED

NAYIM - CAUGHT IN THE MIDDLE OF INSURGENT FIGHTING

Nayim Qudoosi is a single father, currently living in a make-shift tent in a Southern district of Nangarhar, bordering Pakistan. He and his family are amongst the many IDPs in Nangarhar who have been displaced from within the same province. Nangarhar, much like the majority of the border regions of Afghanistan and Pakistan, hosts large Taliban and insurgent presences and is notoriously dangerous. As such, 100% of IDPs that have arrived in Nangarhar are conflict driven.

“At the end of December, ISIS forces attacked our villages and all of the locals fled from the area,” Nayim recounts on his experience of conflict induced displacement. “I also took my children with me and nothing from the home and left everything behind. The clash was between Taliban and ISIS and it was getting stronger with every day.” Nayim and his family are examples of the hundreds of thousands of innocent Afghan civilians who are caught in the middle of insurgent battles and subsequently become displaced within their own country.

After displacement, shelter status for Afghans in Nangarhar is a priority concern. Nangarhar hosts 51,403 IDPs and Returnees who are living in tents and open air (6% of the province’s IDP and returnee population) – the most of all the 15 DTM assessed provinces.

Nayim recounts his experience of living without shelter: “I still remember the cold days and nights where we had no place to live and every moment was hell for us.” Eventually, Nayim installed a small tent made of cloths and has since been living there with his children. Without access to adequate shelter, beds, blankets, food or latrine facilities, the family is extremely vulnerable and the children have gotten sick many times. Unable to work due to his kidney difficulties, Nayim resorts to begging in order to find food. He tells us that his children are still alive today only because neighbours have provided them with food whilst he has been out begging.



Afghanistan is home to extreme weather conditions. As such, Nayim and his family are desperately in need of adequate shelter.

DTM in Afghanistan is generously supported by:



ANNEX I ▪ TOP 200 SETTLEMENTS

RANKED BY TOTAL IN-FLOW [RETURNEES + IDPS]

Rank	District	Settlement	Total In-Flow	Rank	District	Settlement	Total In-Flow
1	Khogyani	Chamtala	37,320	53	Rodat	Mohmand Kalay	2,763
2	Jalalabad	Khalis Family	33,354	54	Behsud	Qasim Abad	2,710
3	Behsud	Ada	18,460	55	Kama	Qala Akhound	2,569
4	Behsud	Jowi Dahi Sharqe	13,583	56	Khogyani	Bar Bahar	2,521
5	Behsud	Tarkho Oba	11,102	57	Behsud	Taghar	2,463
6	Chaparhar	Dawlat Abad	10,620	58	Chaparhar	Aghzo Kalay	2,450
7	Chaparhar	Kunar Safayan	8,711	59	Khogyani	Rokhan Kot	2,409
8	Behsud	Jowi Yazdah	8,665	60	Shinwar	Ghonda Meer	2,397
9	Jalalabad	Angur Bagh	8,631	61	Behsud	Chora Kalay	2,326
10	Behsud	Daman	8,553	62	Behsud	Chambar	2,299
11	Surkhrod	Chamtala	8,450	63	Chaparhar	Safi Abad Family	2,294
12	Chaparhar	Jalozai	8,170	64	Behsud	Shaikh Ali	2,275
13	Khogyani	Kaga	7,150	65	Behsud	Nahr Shahi Awal	2,251
14	Behsud	Karaiz Kabir	7,071	66	Kot	Khazar Khana	2,240
15	Behsud	Saracha Arabeya	6,895	67	Batikot	Say Pai	2,204
16	Jalalabad	Joyi Haft	6,595	68	Shinwar	Mandazi Shoora	2,200
17	Muhmand Dara	Loya Daka	6,105	69	Behsud	Qala Shaikha	2,196
18	Jalalabad	Narinj Bagh	5,942	70	Behsud	Tangi	2,184
19	Surkhrod	Fateh Abad	5,639	71	Muhmand Dara	Tour Kham	2,170
20	Behsud	Beni Ga	5,473	72	Behsud	Behsood Khas	2,148
21	Behsud	Wollayte	5,133	73	Jalalabad	Rukhan Mina	2,127
22	Batikot	Shabdyani	5,110	74	Behsud	Qala Malakh Ha	2,114
23	Behsud	Gul Abad	5,042	75	Chaparhar	Dak Ghulam Khan	2,110
24	Behsud	Perawar	4,775	76	Surkhrod	Amarkhail Band	2,100
25	Behsud	Nahr Shahi	4,728	77	Behsud	Malik Beala	2,055
26	Surkhrod	Rah-e- Balabagh	4,690	78	Batikot	Lowarte	2,040
27	Behsud	Saracha	4,493	79	Nazyan	Naway Landi	2,040
28	Behsud	Sor Garak Ya Naghlowi	4,488	80	Jalalabad	Chiknawri Lesa	2,002
29	Rodat	Kamp Mahjeren Sar Shahi	4,417	81	Behsud	Qala Muslim	1,972
30	Behsud	Moqam Khan	4,262	82	Chaparhar	Tarly Family	1,968
31	Nazyan	Landi	4,216	83	Dara-e-Nur	Amla	1,965
32	Behsud	Karaiz Kabir Ya Naqelin	4,140	84	Rodat	Dowlat Khail Mohmandi	1,949
33	Behsud	Qala Hussain	3,994	85	Rodat	Baro	1,946
34	Surkhrod	Meya Gan	3,990	86	Behsud	Zangoye	1,925
35	Behsud	Naghlo Jowi 15	3,910	87	Surkhrod	Mirzayan	1,921
36	Surkhrod	Ghochak	3,850	88	Dara-e-Nur	Shukyali	1,919
37	Jalalabad	Beaz	3,736	89	Surkhrod	Sultan Pur Sufia	1,917
38	Surkhrod	Khayrabad	3,650	90	Hesarak	Sera Ghogayza	1,884
39	Surkhrod	Chak Noori	3,640	91	Rodat	Banda	1,883
40	Surkhrod	Marghondai	3,620	92	Batikot	Chahar Dehe	1,870
41	Kama	Shairgar	3,587	93	Chaparhar	Landon	1,857
42	Behsud	Poul Saracha	3,395	94	Muhmand Dara	27 Weylas	1,855
43	Rodat	Haji Khalil Kalay	3,375	95	Nazyan	Lalma	1,850
44	Behsud	Tamirat	3,374	96	Jalalabad	Arbaban	1,844
45	Behsud	Khosh Gonbad	3,362	97	Chaparhar	Pesta Kaly	1,840
46	Behsud	Samar Khail	3,339	98	Rodat	Koza Kala (2)	1,840
47	Dara-e-Nur	Qala Shahi	3,318	99	Behsud	Banda	1,829
48	Kama	Sarai	3,049	100	Surkhrod	Koshkak	1,829
49	Behsud	Per Sahib Kalay	3,011	101	Chaparhar	Tarly loy Kaly	1,816
50	Rodat	Sorkhdiwal	2,940	102	Rodat	Roghani	1,814
51	Chaparhar	Sabawoon Family	2,821	103	Kama	Sabz Dari	1,787
52	Kama	Mast Ali	2,775	104	Batikot	Akhundzadagan	1,770

Rank	District	Settlement	Total In-Flow
105	Chaparhar	Tarely	1,760
106	Kuzkunar	Gambirai	1,750
107	Pachieragam	Alif Khail	1,750
108	Behsud	Qala Janan	1,694
109	Kot	Sayid Ahmad Khail	1,692
110	Jalalabad	Pinzum Mamuryat	1,690
111	Rodat	Qala Mir Je	1,655
112	Kama	Dag Mirza Kheil	1,637
113	Kuzkunar	Yaseen Kalay	1,600
114	Surkhrod	Bagrami	1,584
115	Kama	Dahi Tar	1,564
116	Jalalabad	Nahre Shahi	1,555
117	Pachieragam	Janda Khil	1,555
118	Behsud	Boland Ghar	1,540
119	Behsud	Sar Dewal	1,540
120	Dara-e-Nur	Satan	1,540
121	Jalalabad	Farmi Hada	1,540
122	Surkhrod	Sultan Pur Hulya	1,540
123	Goshta	Goshta	1,526
124	Kama	Dahi Ghaze	1,519
125	Shinwar	Malki Khan Shooraa	1,512
126	Batikot	Takeya	1,500
127	Kama	Za Khail	1,499
128	Chaparhar	Dak Ghulam Khan-2	1,494
129	Jalalabad	Jalalabad	1,479
130	Shinwar	Loy Kali Shooraa	1,442
131	Rodat	Kade	1,435
132	Kuzkunar	Shatalow	1,387
133	Shinwar	Khano Khel Shooraa	1,372
134	Behsud	Abdeyan	1,361
135	Chaparhar	Dowood Zai	1,351
136	Kot	Bahar Mina	1,344
137	Jalalabad	Afghan Mina	1,330
138	Kama	Bazed Khail	1,330
139	Surkhrod	Qala Mahroof (1)	1,330
140	Surkhrod	Bazed Khail	1,330
141	Chaparhar	Etihad Family	1,317
142	Behsud	Narmasi	1,308
143	Chaparhar	Sholana	1,303
144	Kama	Dar Bang	1,285
145	Behsud	Bahr Abad	1,275
146	Shinwar	Gula Baz Shooraa	1,274
147	Behsud	Jamali (1)	1,272
148	Muhmand Dara	Basol Payen	1,270
149	Behsud	Dobanday	1,265
150	Rodat	Zara Kala	1,241
151	Lalpur	Baromahla	1,232
152	Behsud	Miran (1)	1,230
153	Behsud	Dubila	1,229
154	Behsud	Gardi Kas	1,228
155	Kama	Goshtwal	1,226
156	Muhmand Dara	Atmanzai Kochi	1,225
157	Rodat	Hesar Shahi	1,218
158	Jalalabad	Qasaba	1,208
159	Chaparhar	Tarky	1,206
160	Behsud	Lajegi	1,191
161	Shinwar	Gull Majan Shooraa	1,183
162	Durbaba	Sobi	1,172

Rank	District	Settlement	Total In-Flow
163	Behsud	Naghlo	1,155
164	Jalalabad	Shanzda Family	1,151
165	Kama	Kundi	1,142
166	Behsud	Hemat Abad	1,127
167	Kuzkunar	Kuhnadeh	1,127
168	Shinwar	Shamal Nazer Gull	1,099
169	Shinwar	Lal Gull	1,092
170	Shinwar	Jabagay	1,092
171	Shinwar	Sayed Rahim	1,084
172	Khogyani	Koz Bahar	1,083
173	Sherzad	Ashpan	1,076
174	Rodat	Nangaryaran Kalay	1,069
175	Rodat	Mazina	1,065
176	Lalpur	Hafiz Khan	1,056
177	Sherzad	Sor Khail	1,055
178	Batikot	Barikaw	1,046
179	Shinwar	Kasi Loay Kali	1,023
180	Goshta	Khoga Khail	1,020
181	Shinwar	Khona Bahadur Shooraa	1,015
182	Chaparhar	Bebe Mahro	1,011
183	Chaparhar	Kundi Bagh	1,002
184	Chaparhar	Lama 2	999
185	Shinwar	Shaftalo Gull Ayaz	995
186	Batikot	Ghazi Abad	994
187	Shinwar	Akhtar Mahammad	994
188	Pachieragam	Musa Khil	991
189	Nazyan	Malewe Kalay	987
190	Pachieragam	Landi Khail	980
191	Shinwar	Khaiber Kali	980
192	Chaparhar	Hafezan	966
193	Kot	Dowani	959
194	Jalalabad	Zara Saranwali	953
195	Kama	Dahi Tar Bala	951
196	Rodat	Roghano Kalay	941
197	Achin	Kaye	938
198	Pachieragam	Zarra Kali	931
199	Shinwar	Haji Mahmmd Wali	931
200	Surkhrod	Choni	930