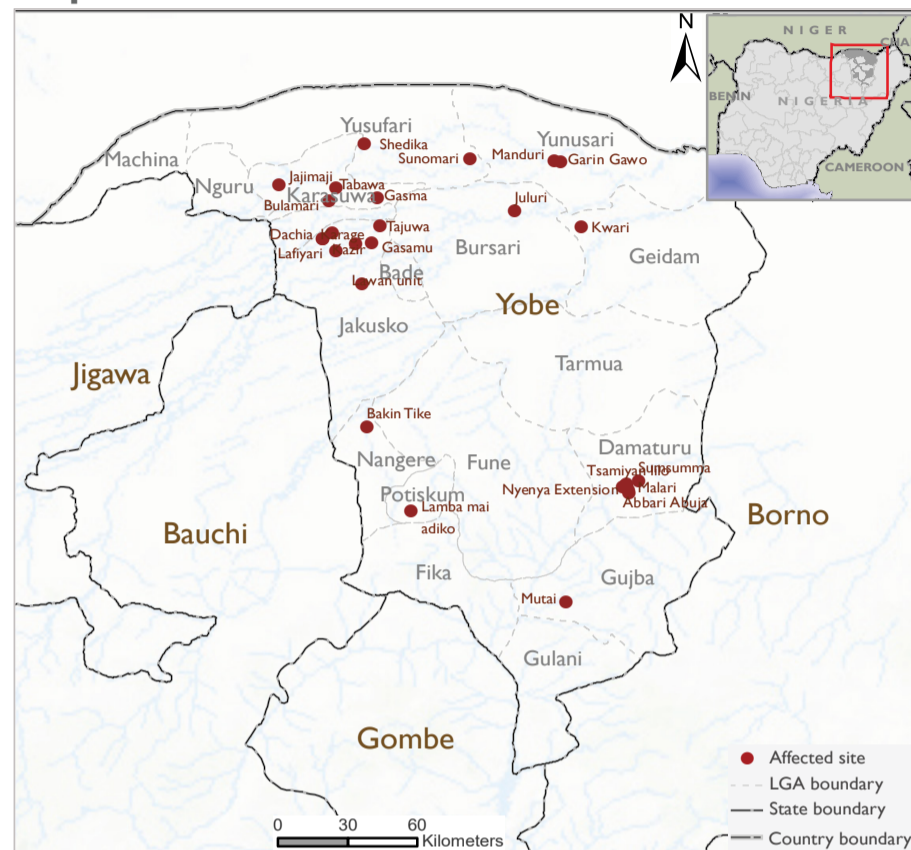


Sites affected by rainfall/floods in some of the LGAs.

Map 1. The affected locations



OVERVIEW

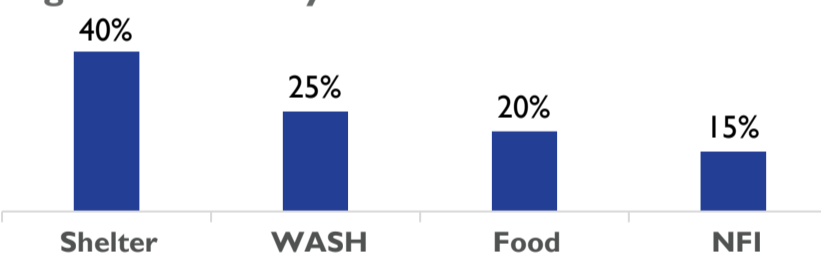
Heavy rainfall/floods struck 10 (Ten) LGAs in Yobe state affecting a total of 5,496 individuals from 1,032 households. The incidents damaged 585 shelters.

In response to these events, the DTM (Displacement Tracking Matrix) field team swiftly conducted evaluations to inform the humanitarian community, and the government, and the partners and to facilitate a target response. The field team utilized direct observation and key informant interviews in flash reports to collect representative data and determine the quantity and immediate needs of the affected groups.

NEEDS

There is a major need of shelter repair kits, WASH and NFI assistance as most shelters need re-enforcement. As a preventive measure against flooding, most communities need a good drainage system to channel water flow.

Figure 1. Priority needs



State	LGA	Site type	Site name	Cause of Incident	Households	Individuals	Male	Female	Children	Number damaged shelters
Yobe	Busari	Host Community	Juluri	Flood	16	81	12	19	50	3
Yobe	Damaturu	Host Community	Nayinawa	Flood	178	752	189	267	296	0
Yobe	Damaturu	Host Community	Tsamian lilo	Flood	16	115	23	38	54	0
Yobe	Damaturu	Host Community	Abbari Abuja	Rainfall	8	32	4	9	19	6
Yobe	Damaturu	Host Community	Malari	Flood	37	164	20	34	110	21
Yobe	Damaturu	Host Community	Nayinawa	Rainfall	15	59	6	9	44	18
Yobe	Damaturu	Host Community	Sumsamma	Flood	15	75	20	28	27	3
Yobe	Damaturu	Host Community	Nyenya Extension	Flood	13	51	7	10	34	4
Yobe	Geidam	Host Community	Kwari	Rainfall	10	96	2	2	92	4
Yobe	Gujba	Host Community	Mutai	Rainfall	158	1106	159	180	767	94
Yobe	Jakusko	Host Community	Lafiyari	Rainfall	8	34	8	10	16	6
Yobe	Jakusko	Host Community	Lawan unit	Rainfall	39	113	41	45	27	10
Yobe	Jakusko	Host Community	Dachia	Rainfall	9	47	9	12	26	6
Yobe	Jakusko	Host Community	Zabudum	Rainfall	8	32	8	11	13	8
Yobe	Jakusko	Host Community	Kazir	Rainfall	10	52	11	15	26	6
Yobe	Jakusko	Host Community	Karage	Rainfall	11	64	13	16	35	6
Yobe	Jakusko	Host Community	Tajuwa	Rainfall	28	93	27	31	35	15
Yobe	Jakusko	Host Community	Maleka	Rainfall	14	77	15	14	48	10
Yobe	Jakusko	Host Community	Gasamu	Rainfall	12	49	13	15	21	7
Yobe	Karasuwa	Host Community	Gasma	Rainfall	52	208	52	60	96	12
Yobe	Karasuwa	Host Community	Tabawa	Flood	22	12	2	4	6	0
Yobe	Karasuwa	Host Community	Jajimaji	Rainfall	35	281	52	64	165	241
Yobe	Karasuwa	Host Community	Bulamari	Rainfall	28	126	24	29	73	12
Yobe	Nangere	Host Community	Bakin Tike	Rainfall	8	99	19	28	52	2
Yobe	Potiskum	Host Community	Lamba mai adiko	Flood	18	85	21	27	37	8
Yobe	Yunusari	Host Community	Garin Gawo	Rainfall	26	139	20	21	98	4
Yobe	Yunusari	Host Community	Manduri	Rainfall	8	52	9	10	33	4
Yobe	Yusufari	Host Community	Shedika	Flood	42	194	38	34	122	20
Yobe	Yusufari	Host Community	Sunomari	Rainfall	188	1208	221	204	783	55
Total					1,032	5,496	1,045	1,246	3,205	585

The map in this report is for illustration purposes only. The depiction and use of boundaries, geographic names, and related data shown on map and included in this report is not warranted to be error free nor does not imply judgment on the legal status of any territory, or any endorsement or acceptance of such boundaries by IOM

When quoting, paraphrasing, or in any other way using the information mentioned in this report, the source needs to be stated appropriately as follows: "Source: Displacement Tracking Matrix (DTM) of the International Organization for Migration (IOM), Nigeria Mission, OCTOBER 2023"