



## Overview

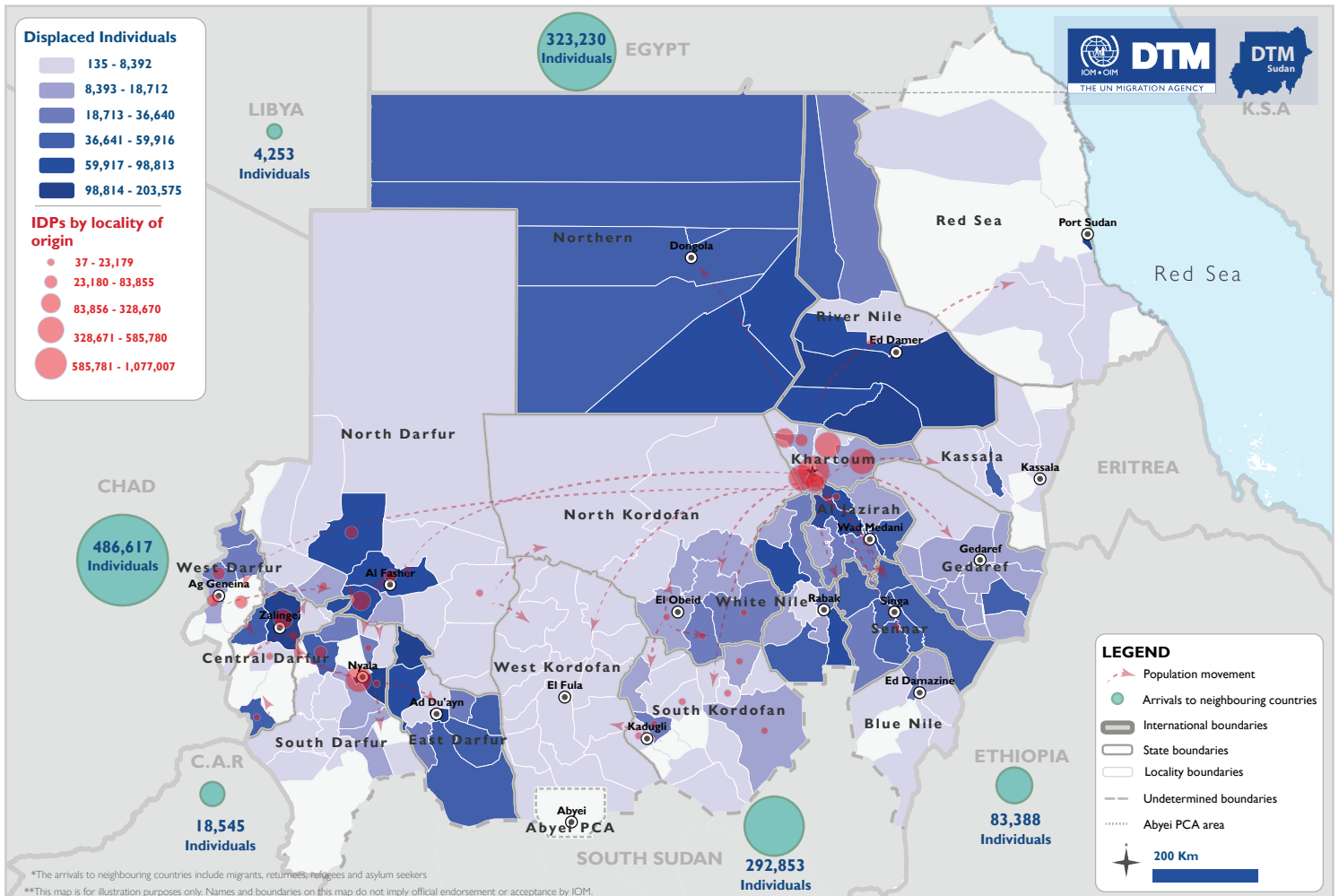
From 15 April 2023, armed clashes erupted between the Sudanese Armed Forces (SAF) and the Rapid Support Forces (RSF). As a result of the military clashes, DTM Sudan estimates that 4,425,083 Individuals (883,098 Households) have been recently internally displaced. The IDP caseload has been observed in 4,403 locations across all of Sudan's 18 states.\*

The highest proportions of IDPs have been observed in River Nile (11.60%), South Darfur (11.44%), East Darfur (11.32%), Aj Zahirah (8.29%), Northern (8.19%), and North Darfur (7.50%). Field teams report that the IDPs observed were originally displaced from eight states. The majority (3,007,833 IDPs, 67.97%) have been reportedly displaced from Khartoum state; followed by South Darfur (14.87%), North Darfur (8.19%), Central Darfur (4.03%), West Darfur (3.74%), South Kordofan (0.74%), North Kordofan (0.44%), and Aj Zahirah (0.01%).

DTM Sudan also estimates that approximately 2.72% of the IDP caseload are non-Sudanese nationals.\*\*

In addition to the internal displacement, the conflict in Sudan has caused the Mixed Cross-Border Movements of 1,208,886 individuals into neighbouring countries namely Egypt, Libya, Chad, Central African Republic, South Sudan and Ethiopia. 66% of arrivals tracked in those countries were Sudanese nationals and 34% estimated foreign nationals and returnees. The majority of arrivals were reported in Chad (40.3%), Egypt (26.7%)\*\*\*, and South Sudan (24.2%).

This product provides brief insights into those displaced in Sudan post-15 April 2023. For more granular information on the IDP caseload and the displacement context, please see IOM DTM's [Monthly Displacement Overview 01](#).

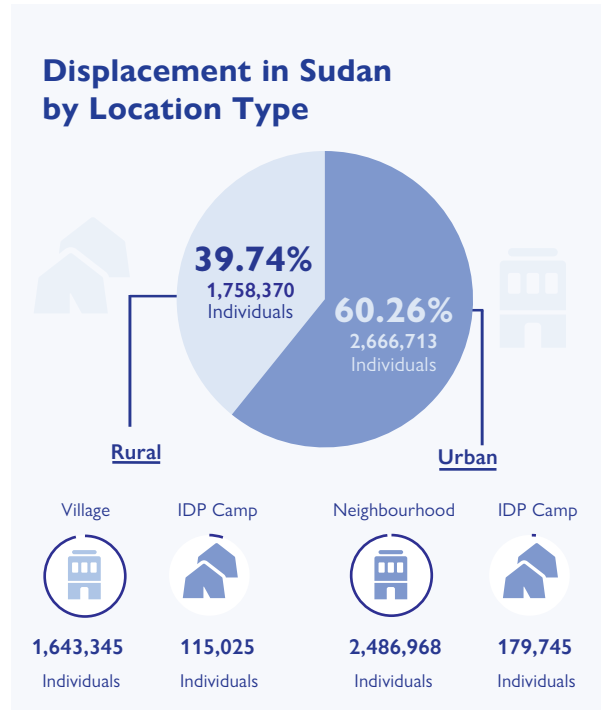
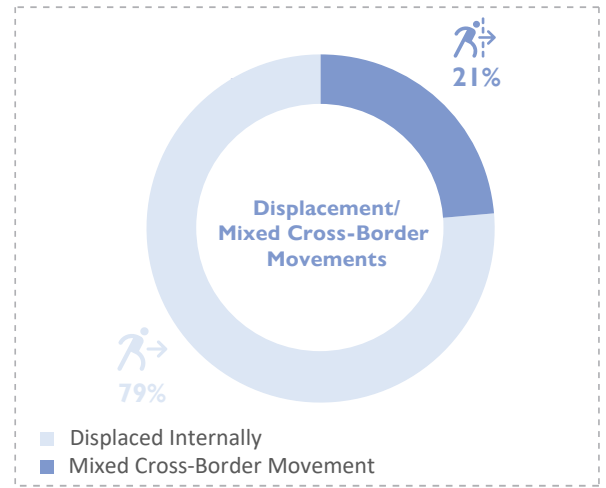


Map 1: Displacement across Sudan and into neighbouring countries since 15 April 2023.

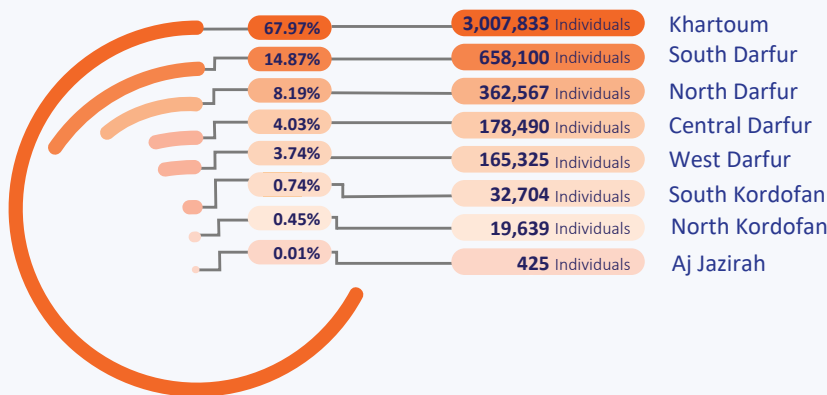
\*The data from many locations has been gathered with the co-ordination of the Humanitarian Aid Commission.  
 \*\*Field teams collect information on the displacement of foreign nationals in Sudan regardless of whether those individuals have sought international protection or not. Due to the ongoing operational limitations, DTM is currently unable to distinguish between those who have sought asylum and are registered as refugee and those who are not.  
 \*\*\*According to the last available update from the Ministry of Foreign Affairs as of 4 September 2023.

Current Locations	MDO 28-Sep-23	Snapshot 5 03-Oct-23	Difference	% Total IDPs	Number of locations
Aj Jazirah	298,674	366,744	68,070 ↑	8.29%	1,045
Blue Nile	52,794	53,325	531 ↑	1.21%	94
Central Darfur	287,095	290,240	3,145 ↑	6.56%	17
East Darfur	500,515	500,965	450 ↑	11.32%	18
Gedaref	252,824	263,063	10,239 ↑	5.94%	205
Kassala	102,777	105,452	2,675 ↑	2.38%	141
Khartoum	60,100	61,975	1,875 ↑	1.40%	42
North Darfur	329,645	331,998	2,353 ↑	7.50%	86
North Kordofan	90,168	98,221	8,053 ↑	2.22%	355
Northern	364,378	362,478	1,900 ↓	8.19%	247
Red Sea	108,420	112,609	4,189 ↑	2.54%	108
River Nile	512,755	513,405	650 ↑	11.60%	458
Sennar	327,091	323,881	3,210 ↓	7.32%	211
South Darfur	490,153	506,203	16,050 ↑	11.44%	38
South Kordofan	84,899	92,269	7,370 ↑	2.09%	337
West Darfur	100,335	105,750	5,415 ↑	2.39%	30
West Kordofan	46,231	48,110	1,879 ↑	1.09%	394
White Nile	286,238	288,395	2,157 ↑	6.52%	577
<b>Total</b>	<b>4,295,092</b>	<b>4,425,083</b>	<b>129,991</b>	<b>100.00%</b>	<b>4,403</b>

Table 1: Overview of displacement by state



### State of Origin



**Disclaimer:** DTM Sudan is a suite of methodological tools which aims to track and monitor displacement. DTM collects primary data, with a focus on providing best estimates for support of the wider humanitarian community. DTM Sudan notes that military clashes remain continuous in many areas across Sudan. As such, DTM is currently collecting data through a dual combination of face-to-face and remote interviews with key informants across its network. Data on flows into neighbouring countries is based on available information from DTM flow monitoring networks and secondary sources. Figures should be treated as preliminary findings only and are subject to change via future verification exercises.

## Shelter Categories (by households)

States	Camps	Host Communities	Rented Accommodations	Improvised / Critical Shelters	Schools or Other Public Buildings	Open Area Informal Settlements
Aj Jazirah 72,298	-	66.96% 48,411	6.47% 4,678	0.09% 65	23.92% 17,293	2.56% 1,851
Blue Nile 10,632	-	63.12% 6,711	36.88% 3,921	-	-	-
Central Darfur 58,048	10.86% 6,306	42.80% 24,845	-	-	6.10% 3,540	40.24% 23,357
East Darfur 100,173	0.45% 444	96.76% 96,930	2.42% 2,426	-	0.37% 373	-
Gedaref 52,523	2.77% 1,457	71.61% 37,614	22.36% 11,744	-	3.25% 1,705	0.01% 3
Kassala 21,087	-	74.98% 15,811	22.16% 4,672	-	1.59% 336	1.27% 268
Khartoum 12,392	-	65.44% 8,109	31.07% 3,850	-	3.49% 433	-
North Darfur 66,269	20.37% 13,501	43.35% 28,730	-	0.07% 44	7.21% 4,777	29.00% 19,217
North Kordofan 19,222	-	94.37% 18,140	0.40% 77	1.17% 225	3.69% 710	0.37% 70
Northern 73,141	-	82.82% 60,577	6.52% 4,769	-	10.66% 7,795	-
Red Sea 22,514	-	52.94% 11,918	33.42% 7,525	-	10.75% 2,420	2.89% 651
River Nile 102,556	-	75.05% 76,968	19.83% 20,338	0.23% 240	3.39% 3,469	1.50% 1,541
Sennar 64,624	-	76.72% 49,582	20.17% 13,034	-	2.17% 1,401	0.94% 607
South Darfur 101,239	20.11% 20,364	37.91% 38,383	-	1.71% 1,732	14.34% 14,522	25.93% 26,238
South Kordofan 18,140	-	92.22% 16,729	0.29% 52	-	7.27% 1,319	0.22% 40
West Darfur 21,150	-	42.13% 8,911	-	7.09% 1,500	46.29% 9,789	4.49% 950
West Kordofan 9,292	-	97.38% 9,049	1.35% 125	-	1.00% 93	0.27% 25
White Nile 57,798	29.04% 16,782	48.44% 27,997	6.43% 3,715	-	14.92% 8,624	1.17% 680
<b>GRAND TOTAL HOUSEHOLDS</b>	<b>58,854</b>	<b>585,415</b>	<b>80,926</b>	<b>3,806</b>	<b>78,599</b>	<b>75,498</b>

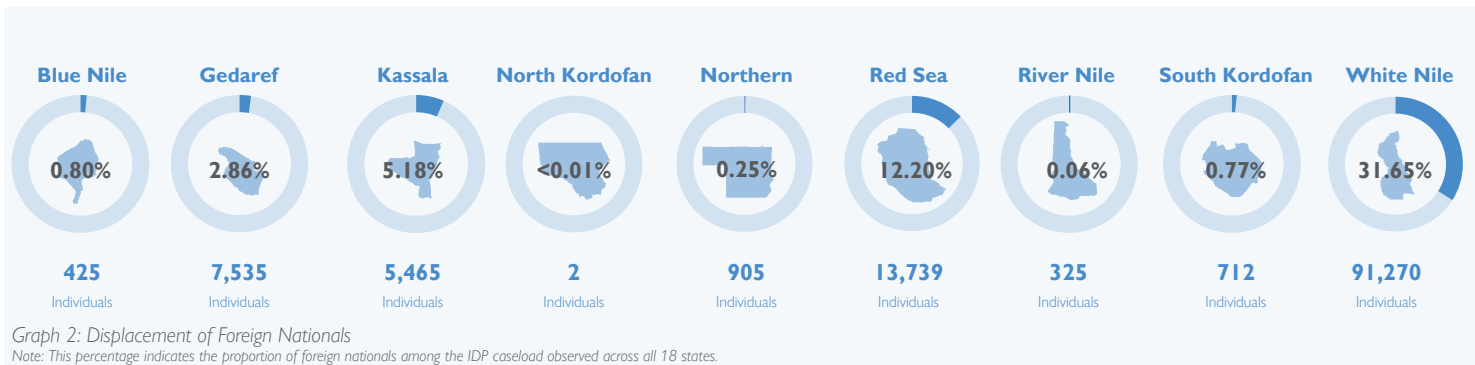
# Total Households: 883,098

## Displacement of Foreign Nationals within Sudan


 **120,378** ..... **2.72%**<sup>1</sup>  
individuals

From the total reported IDP caseload, field teams indicate that 120,378 individuals are foreign nationals (approximately 2.72% of total IDPs across Sudan). These individuals are located across Blue Nile, Gedaref, Kassala, North Kordofan, South Kordofan, Northern, Red Sea, River Nile, and White Nile states. DTM estimates that the IDP caseload in the remaining states are all Sudanese nationals. The majority of foreign nationals (91,270 IDPs) are

located in White Nile state – where they constitute 31.65% of the IDP caseload in that state. In comparison, foreign nationals constitute smaller proportions of the observed caseload in Red Sea (12.20%), Kassala (5.18%), Gedaref (2.86%), Blue Nile (0.80%), South Kordofan (0.77%), Northern (0.25%), River Nile (0.06%), and North Kordofan (<0.01%).

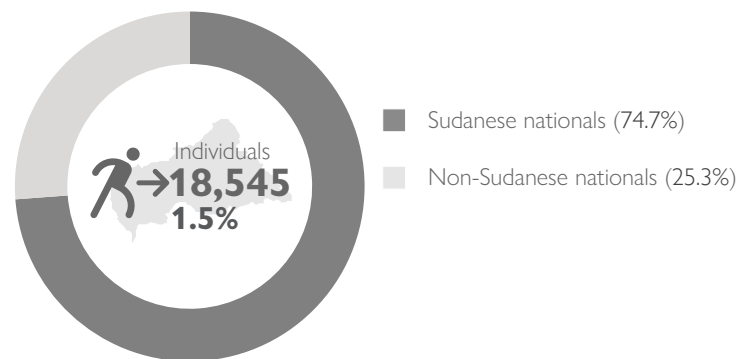


## Mixed Cross-Border Movement

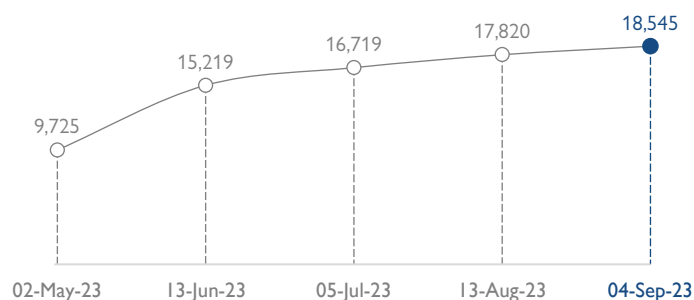
 **1,208,886**  
Mixed Cross-Border Movement

Since the onset of the conflict on April 15, 2023, DTM has noted substantial mixed cross-border movements involving both Sudanese and foreign nationals (including returnees). Field teams report that such these movements have proved challenging for communities to undertake. Security concerns, such as the both the direct implication of military clashes or following the breakdown in law and order in many areas, as well as steep fuel and transportation costs, and environmental events (for example flooding during the 2023 Rainy Season) have all impacted options for travel domestically and into neighbouring countries.

## CENTRAL AFRICAN REPUBLIC

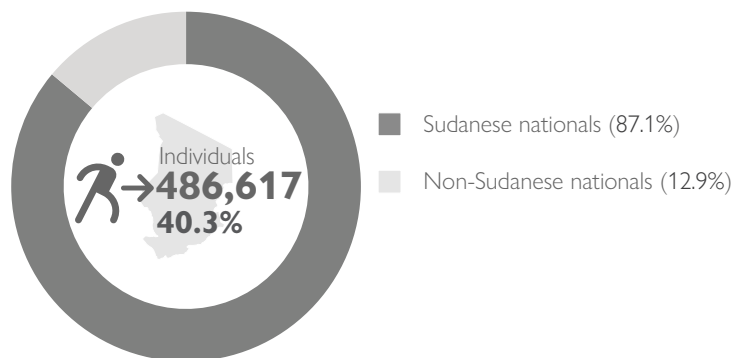


Source: IOM, UNHCR, National Commission for Refugees (CNR)

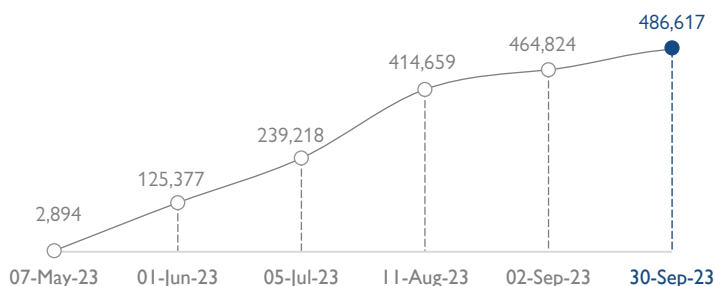


Graph 3: Timeline of Mixed Cross-Border Movement into Central African Republic

## CHAD<sup>2</sup>



Source: IOM, UNHCR



Graph 4: Timeline of Mixed Cross-Border Movement into Chad

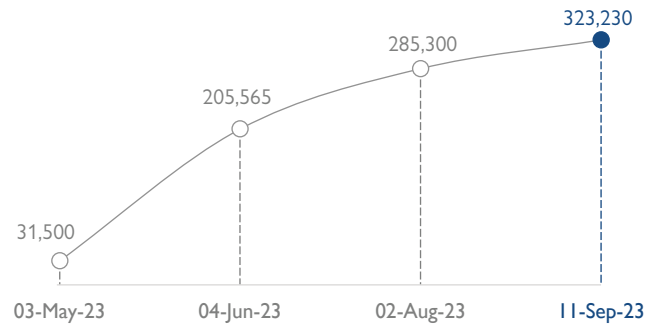
1. This percentage indicates the proportion of foreign nationals observed across all 18 states.

2. For more information on Mixed-Cross Border Movement to Chad, please visit [DTM Chad website](https://dtm.chad.iom.int).

## EGYPT<sup>1</sup>

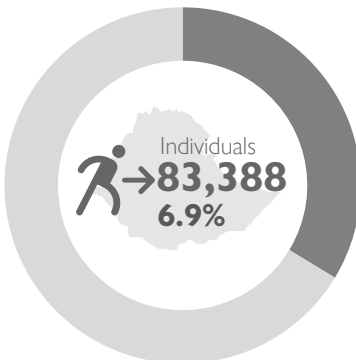


Source: Ministry of Foreign Affairs

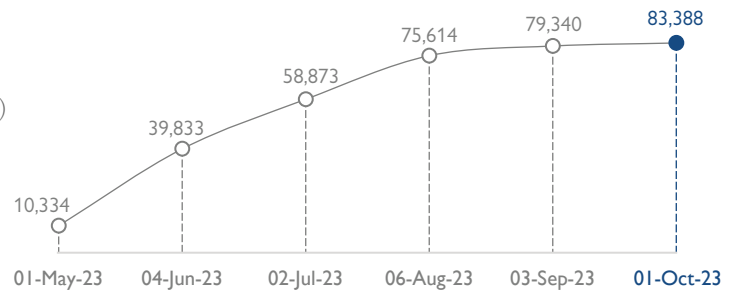


Graph 5: Timeline of Mixed Cross-Border Movement into Egypt

## ETHIOPIA<sup>2</sup>

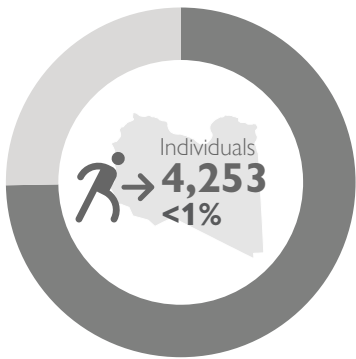


Source: IOM

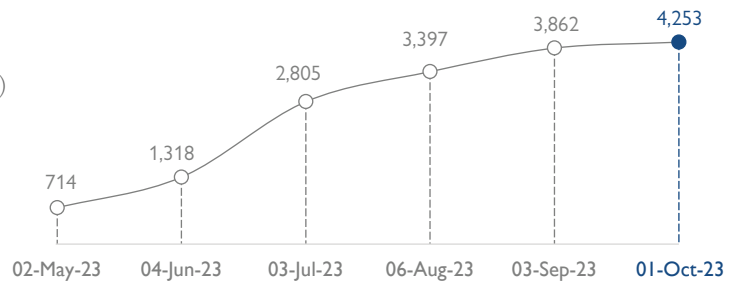


Graph 6: Timeline of Mixed Cross-Border Movement into Ethiopia

## LIBYA

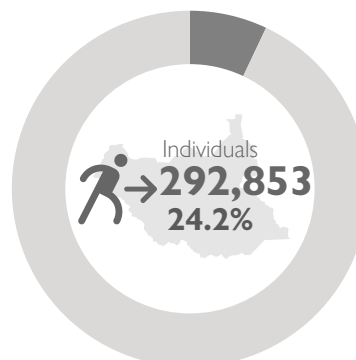


Source: IOM

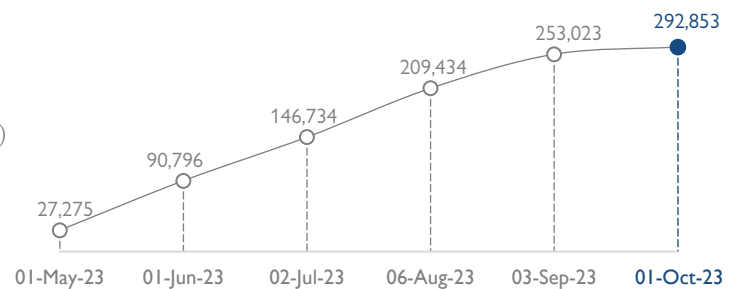


Graph 7: Timeline of Mixed Cross-Border Movement into Libya

## SOUTH SUDAN<sup>3</sup>



Source: IOM, UNHCR



Graph 8: Timeline of Mixed Cross-Border Movement into South Sudan

1. According to the last available update from the Ministry of Foreign Affairs as of 4 September 2023.

2. For more information on Mixed-Cross Border Movement to Ethiopia, please visit [Population Movement from Sudan to the East and Horn of Africa Dashboard](#).

3. For more information on Mixed-Cross Border Movement to South Sudan, please visit [Population Movement from Sudan to South Sudan Dashboard](#).





**USAID**  
FROM THE AMERICAN PEOPLE



Funded By European  
Union Humanitarian Aid

## Disclaimer

The figures for Egypt have been provided by the Egyptian Foreign Ministry. All remaining figures for cross-border movement has been provided by DTM country focal points. Data is collected through DTM field teams , partners and national authorities. The data collection is based on DTM's flow monitoring and event tracking methodology.

With the support of:



**IOM**  
UN MIGRATION

REGIONAL  
DATA HUB  
MENA