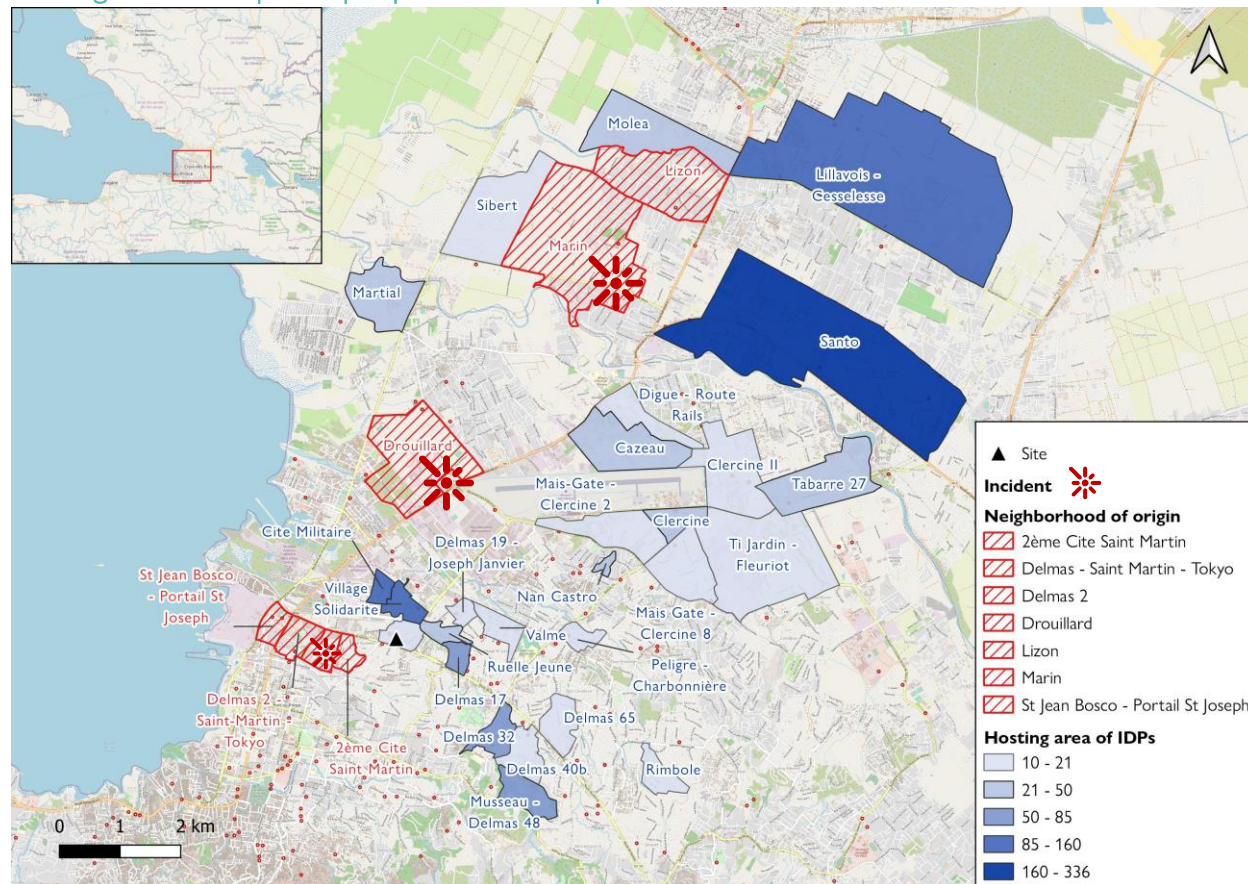


This information was collected following the armed attacks that took place in the Ouest department on **September 26, 2023**, specifically in the **Delmas 2** neighborhood (municipality of Delmas). On **September 27, 2023**, two additional attacks occurred in **Marin** (municipality of Croix-Des-Bouquets) and the **Cité Douillard** neighborhood (municipality of Cité Soleil). These attacks affected residents of **seven** neighborhoods, resulting in the emergence of new spontaneous displacement sites. Assessments were conducted by contacting key informants via telephone. The results indicate that there are **1,461** internally displaced persons, distributed among **372** households. Among them, **15** individuals are residing in **one** site, equivalent to three households. The report focuses on these three events on the first page, and then provides separate details for each event on the subsequent three pages.

Hosting areas of displaced people in the Metropolitan Area of Port-au-Prince.

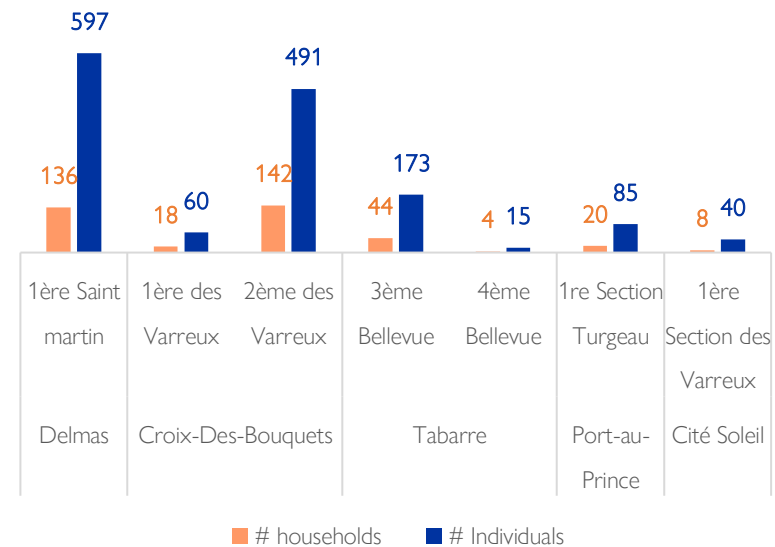


This map is for illustration purposes only. The depiction and use of boundaries, geographic names and related data shown on maps and included in this report are not warranted to be error free nor do they imply judgment on the legal status of any territory, or any endorsement or acceptance of such boundaries by IOM.

Demography

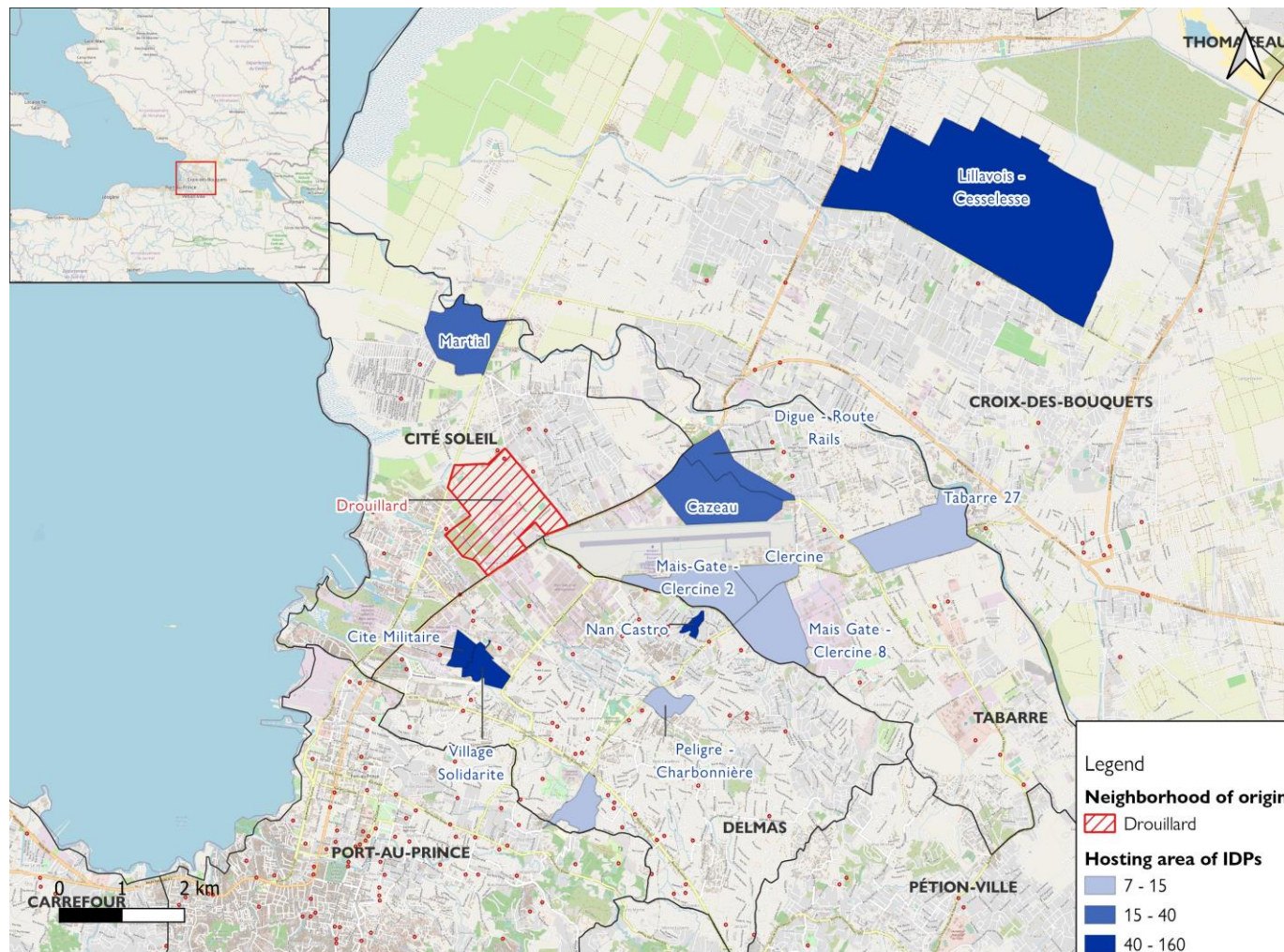


Displacement by municipality and communal section



■ # households ■ # Individuals

Hosting areas of displaced people following the violence in the municipality of Cité Soleil



Demography



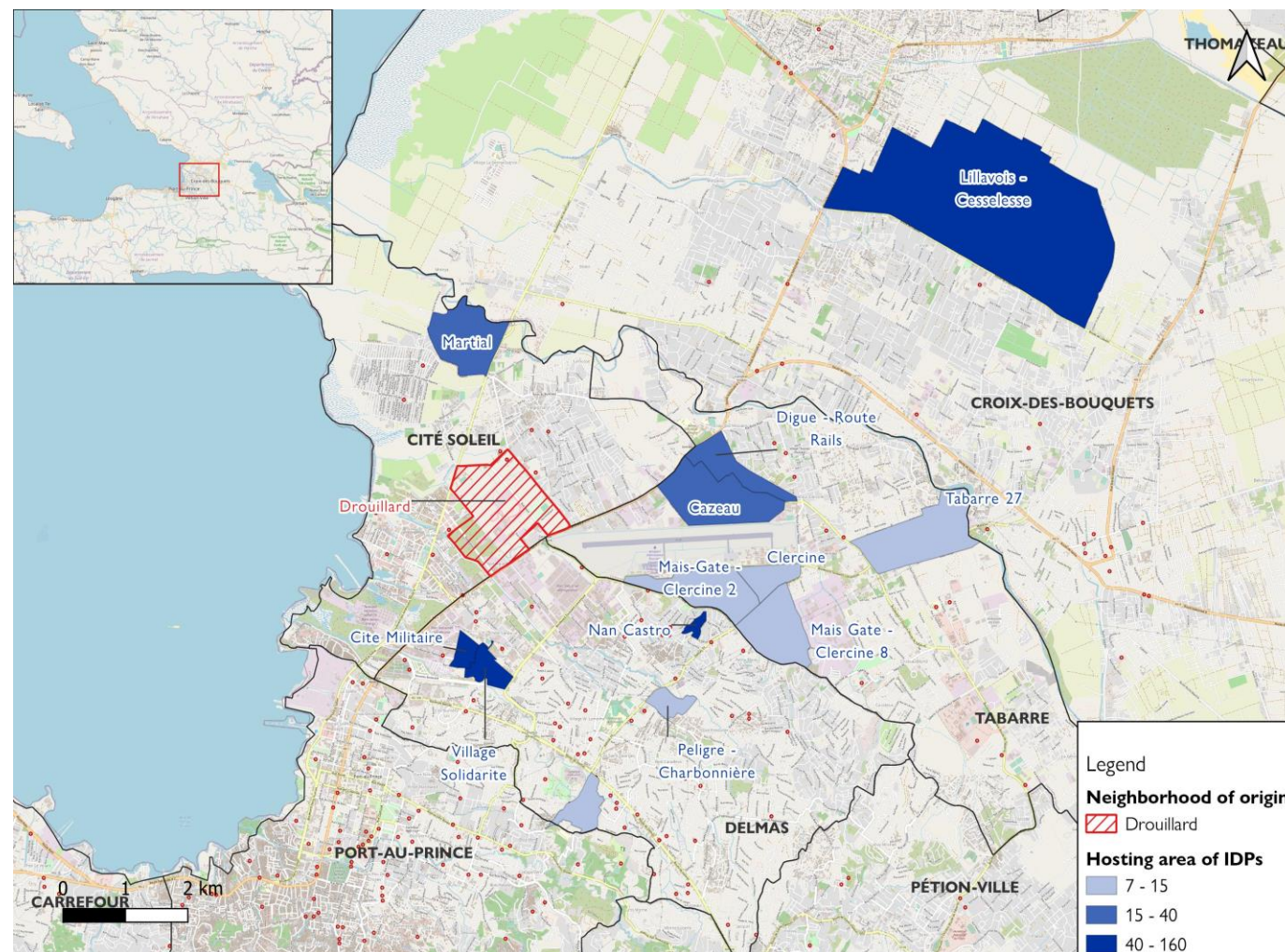
143 Displaced households
648 Displaced individuals

Hosting neighborhoods

Neighborhood	# households	# individuals
Village Solidarité	40	160
Lillavois - Cesselesse	38	155
Cité Militaire	25	125
Nan Castro	7	42
Martial	8	40
Cazeau	8	32
Digue - Route Rails	5	20
Mais-Gate - Clercine 8	5	15
tabarre 27	4	15
Delmas 32	4	15
Mais-Gate - Clercine 2	3	12
Peligre - Charbonnière	6	10
Clercine	2	7
Total	155	648

This map is for illustration purposes only. The depiction and use of boundaries, geographic names and related data shown on maps and included in this report are not warranted to be error free nor do they imply judgment on the legal status of any territory, or any endorsement or acceptance of such boundaries by IOM.

Hosting areas of displaced people following the violence in the municipality of Croix-Des-Bouquets



Demography

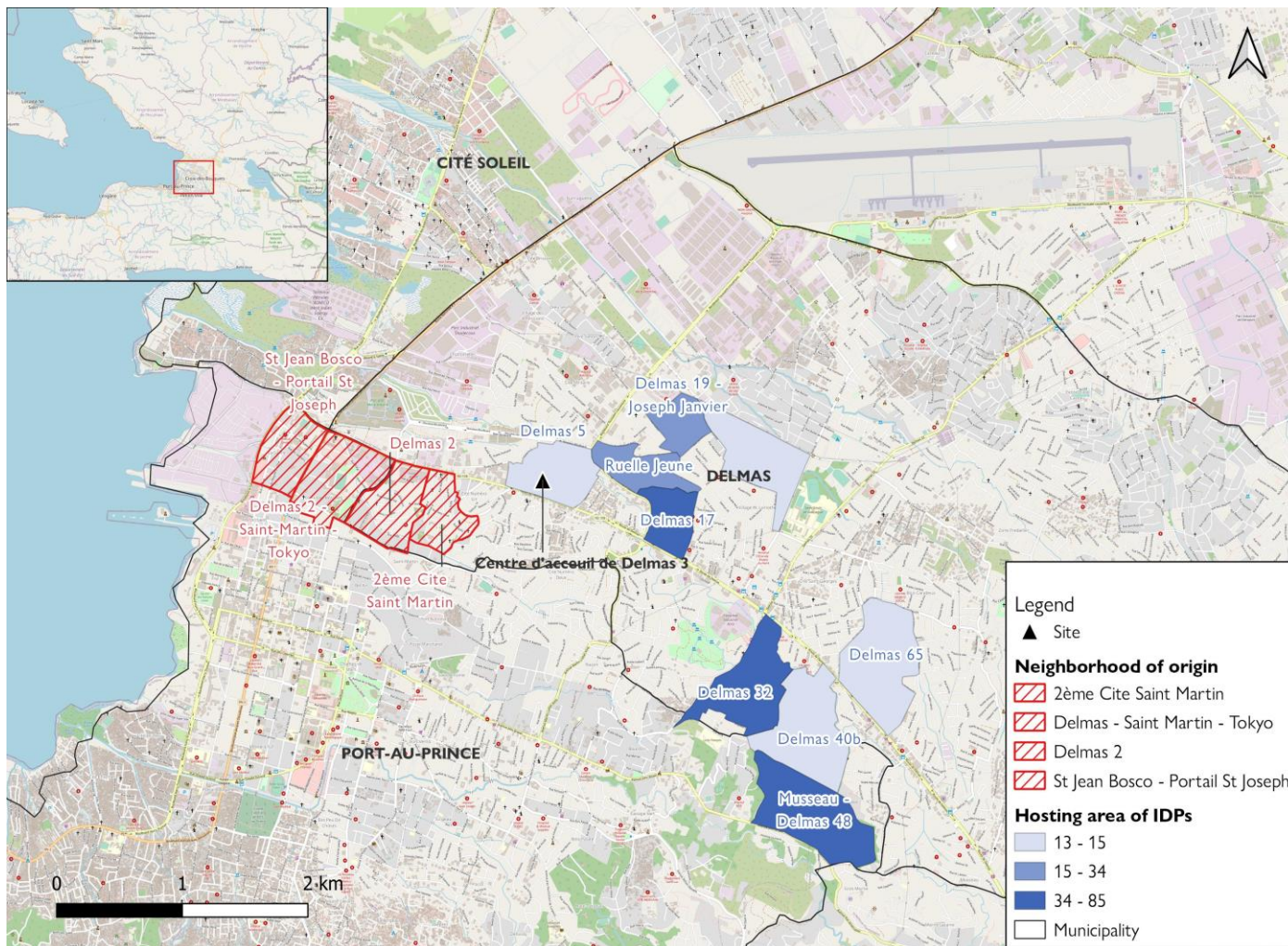
155 Displaced households
483 Displaced individuals

Hosting neighborhoods

Neighborhood	# households	# individuals
Santo	104	336
Molea	12	39
Tabarre 27	8	35
Clercine	6	25
Sibert	6	21
Ti Jardin - Fleuriot	4	15
Clercine II	3	12
Total	143	483

This map is for illustration purposes only. The depiction and use of boundaries, geographic names and related data shown on maps and included in this report are not warranted to be error free nor do they imply judgment on the legal status of any territory, or any endorsement or acceptance of such boundaries by IOM.

Hosting areas of displaced people following the violence in the municipality of Delmas



Demography

74 Displaced households
330 Displaced individuals
1 Spontaneous site

Hosting neighborhoods

Neighborhood	# households	# individuals
Musseau - Delmas 48	20	85
Delmas 17	14	67
Delmas 32	10	55
Ruelle Jeune	7	34
Delmas 19 - Joseph Janvier	5	20
Rimbole	5	15
Delmas 5	3	15
Delmas 65	3	13
Valme	4	13
Delmas 40b	3	13
Total	74	330

This map is for illustration purposes only. The depiction and use of boundaries, geographic names and related data shown on maps and included in this report are not warranted to be error free nor do they imply judgment on the legal status of any territory, or any endorsement or acceptance of such boundaries by IOM.