

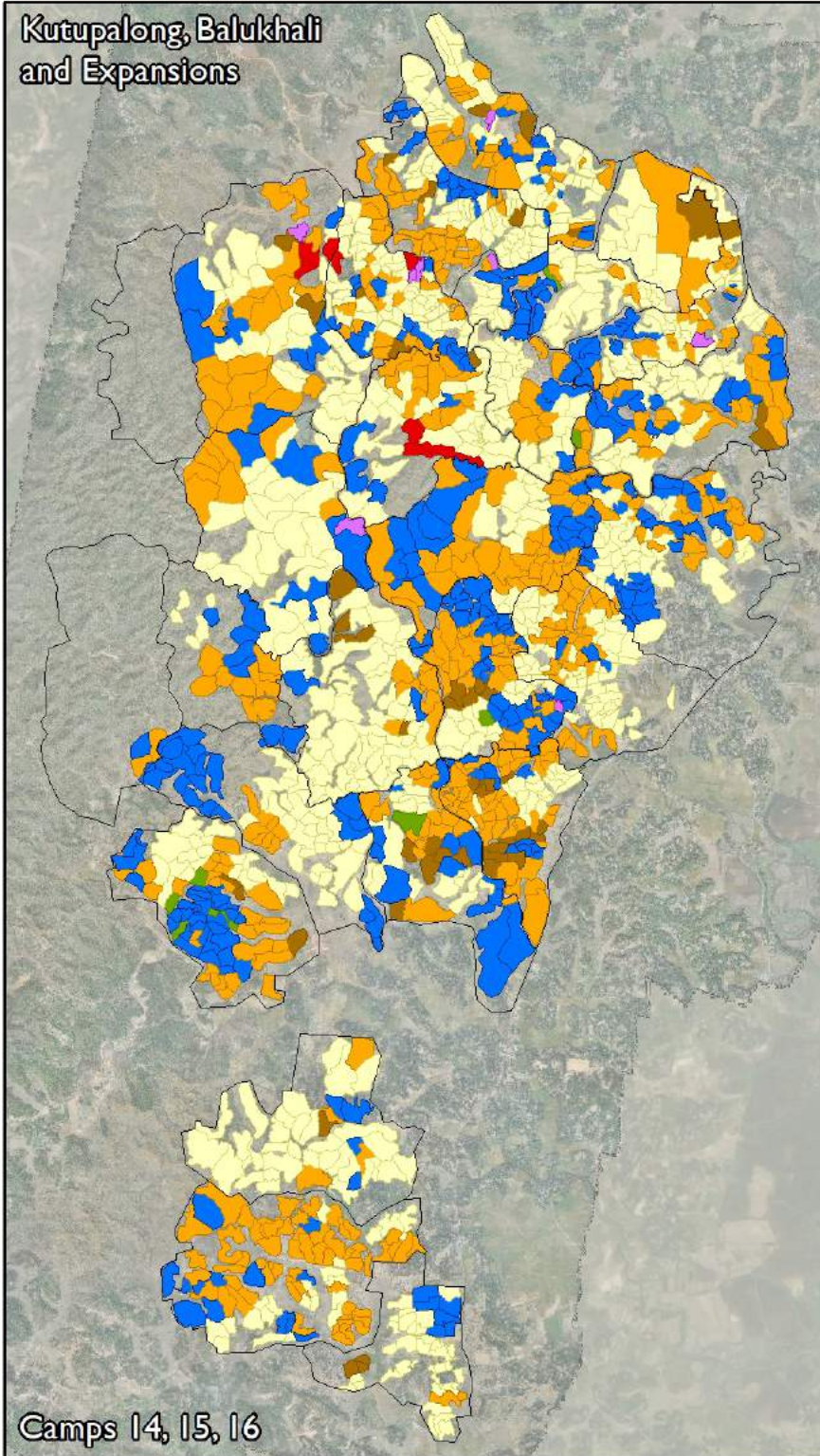
# Most Severe Needs

Map production: 17 Jun 2018  
Dates of assessment: 1 - 20 May 2018  
Data sources: IOM NPM, ISCG

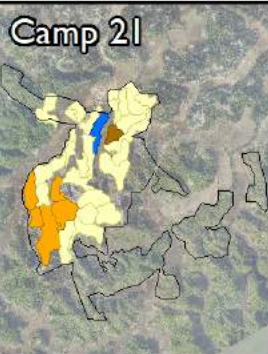
- Drinking water / WASH facilities
- Health facilities / hygiene items
- Food or Cooking fuel
- Shelter
- Education for children
- Job opportunities
- Cash

Disclaimer: This map is for illustration purposes only. Names and boundaries on this map do not imply official endorsement or acceptance by IOM.

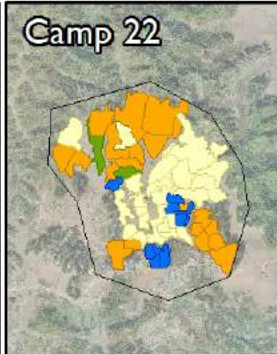
## Kutupalong, Balukhali and Expansions



Camps 14, 15, 16



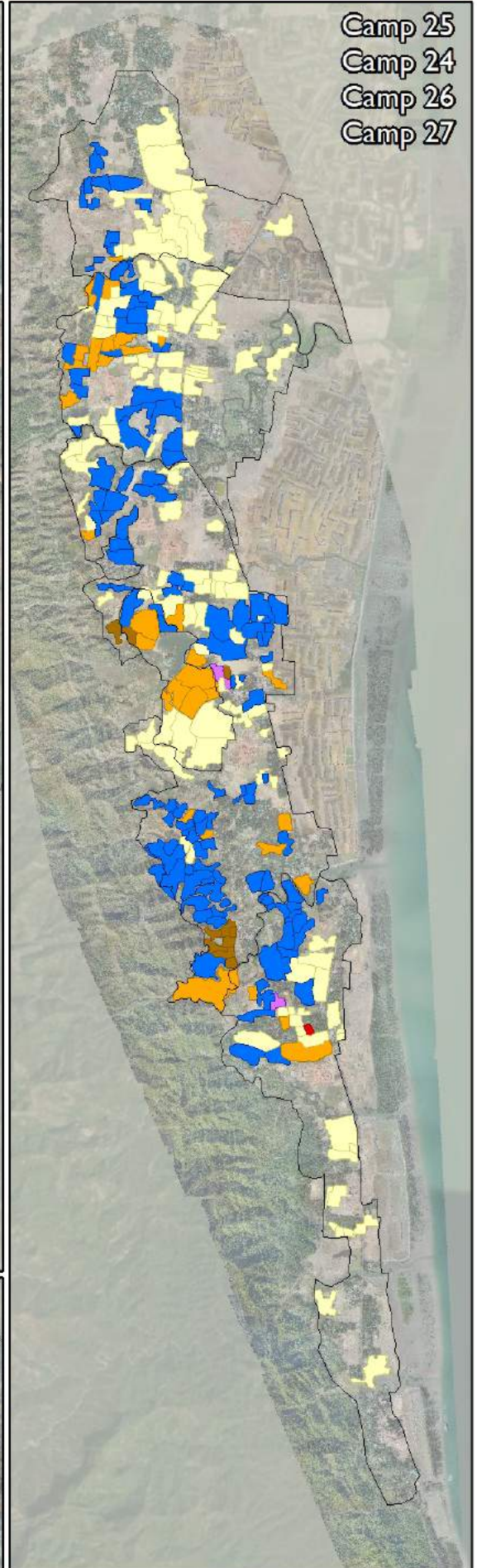
Camp 21



Camp 22



Camp 23

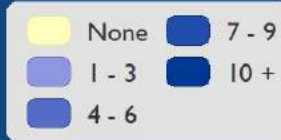


Camp 25  
Camp 24  
Camp 26  
Camp 27

NFI distribution types in the past 30 days

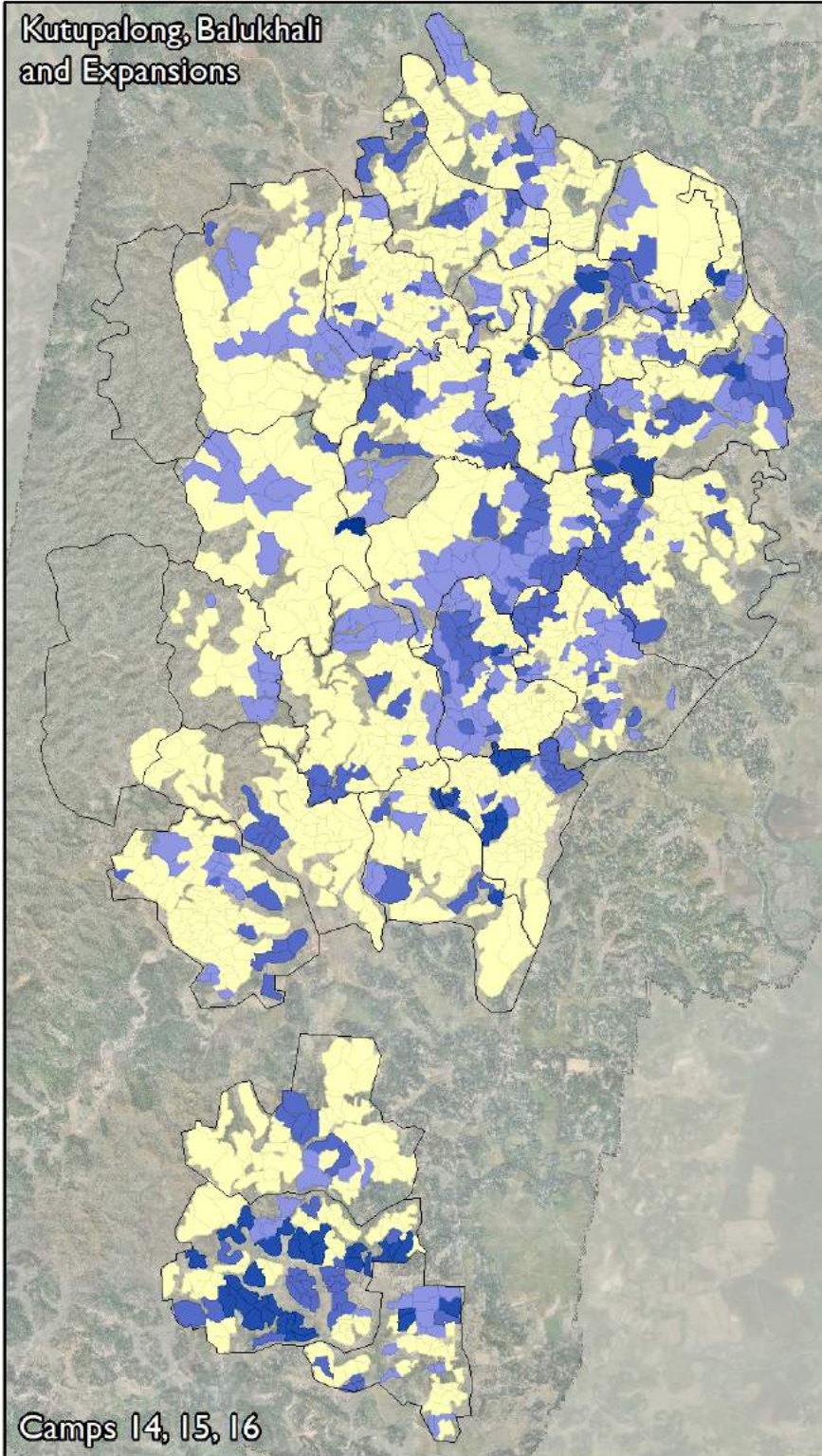
Map production: 17 Jun 2018  
 Dates of assessment: 1 - 20 May 2018  
 Data sources: IOM NPM, ISCG

The 12 NFI types represented in SA 10 include: tarpaulin, bamboos, rope, blankets, mats, mosquito nets, pots & pans, utensils, stove, cooking fuel, torch, and hygiene/dignity kit.

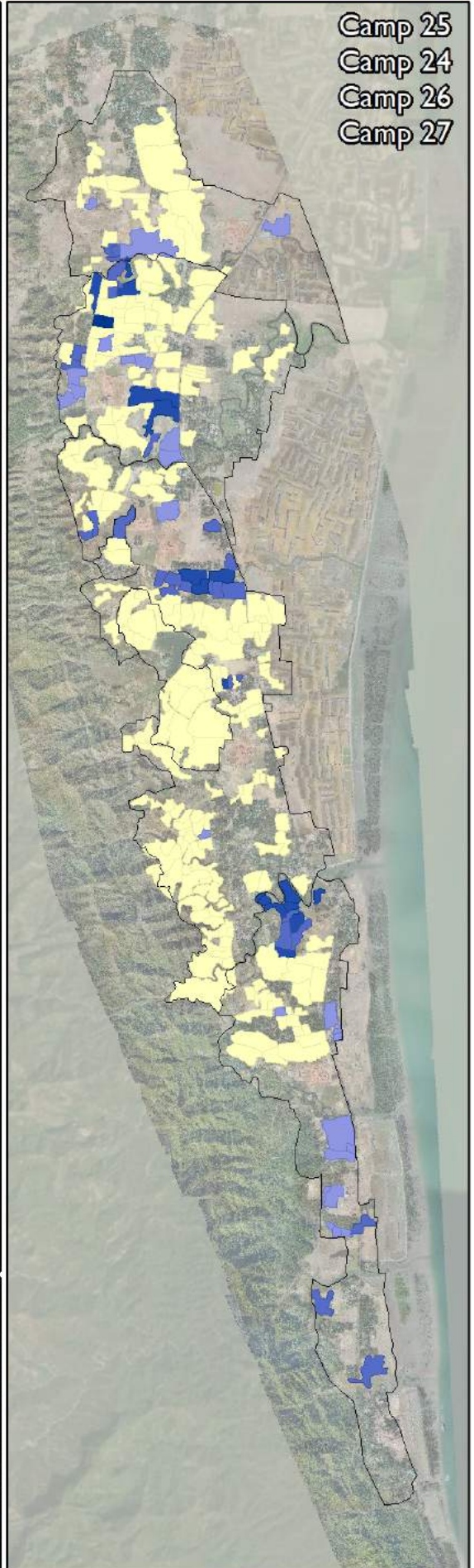


Disclaimer: This map is for illustration purposes only. Names and boundaries on this map do not imply official endorsement or acceptance by IOM.

**Kutupalong, Balukhali and Expansions**



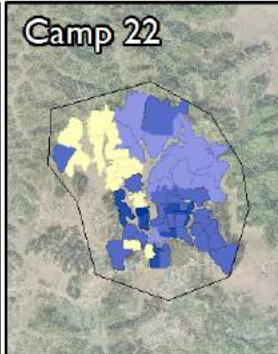
Camps 14, 15, 16



Camp 25  
 Camp 24  
 Camp 26  
 Camp 27



Camp 21



Camp 22



Camp 23

# Population Density

Map production: 17 Jun 2018  
Dates of assessment: 1 - 20 May 2018  
Data sources: IOM NPM, ISCG

Meters<sup>2</sup> per person

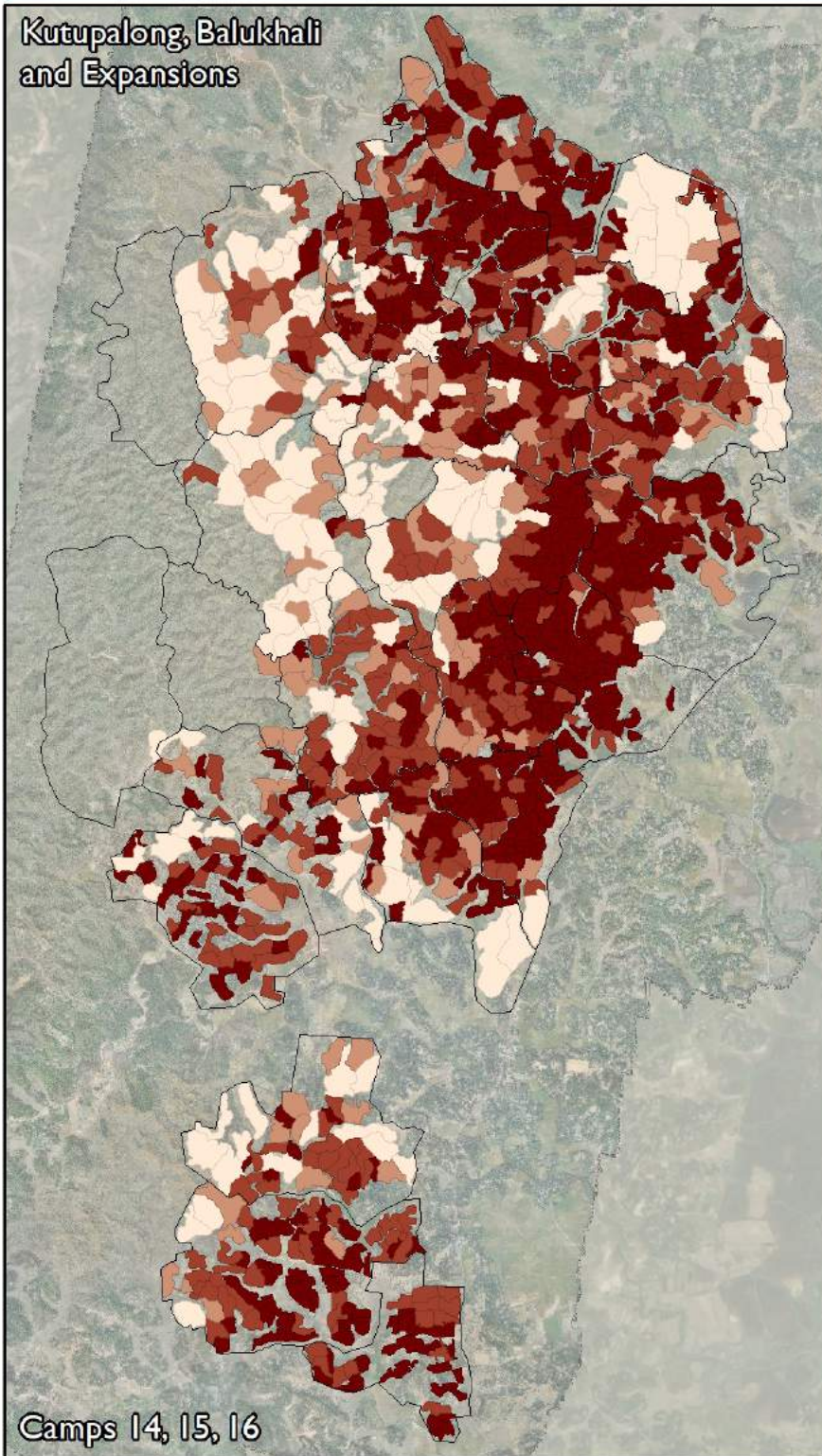


**NPM**  
Needs and Population Monitoring

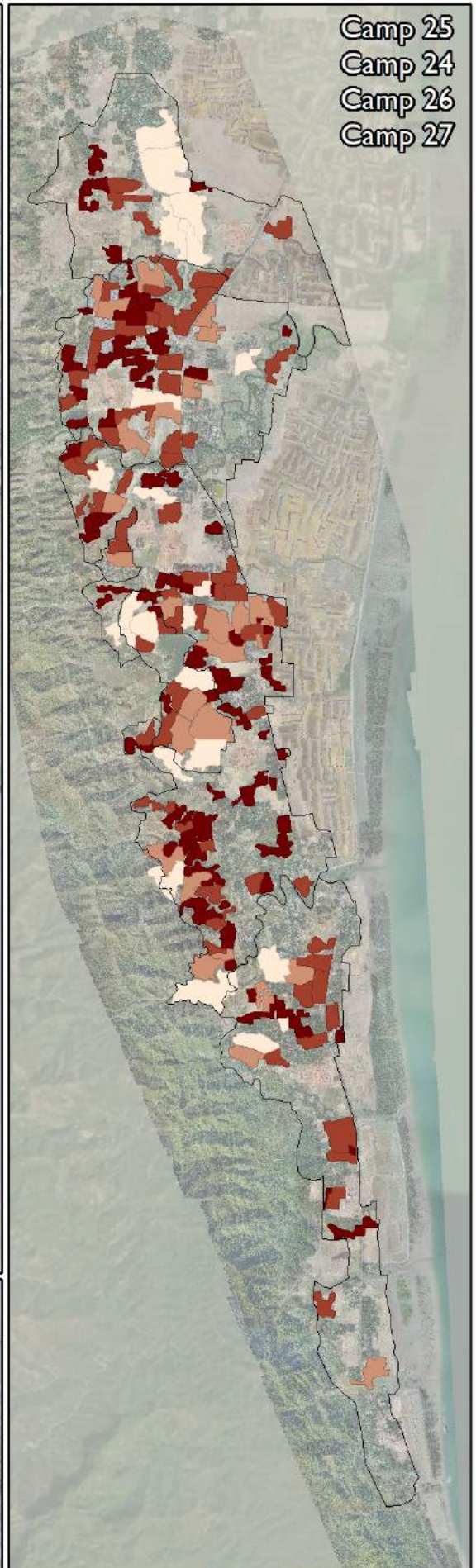
THE UN MIGRATION AGENCY

Disclaimer: This map is for illustration purposes only. Names and boundaries on this map do not imply official endorsement or acceptance by IOM.

## Kutupalong, Balukhali and Expansions



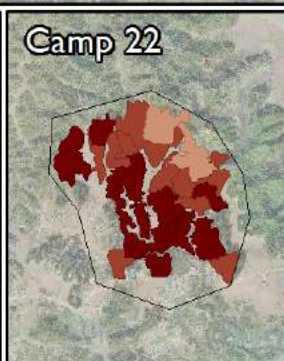
## Camp 25 Camp 24 Camp 26 Camp 27



## Camp 21



## Camp 22



## Camp 23



# NPM Round 10 Site Assessment Thematic Map

## Primary Safety Concern

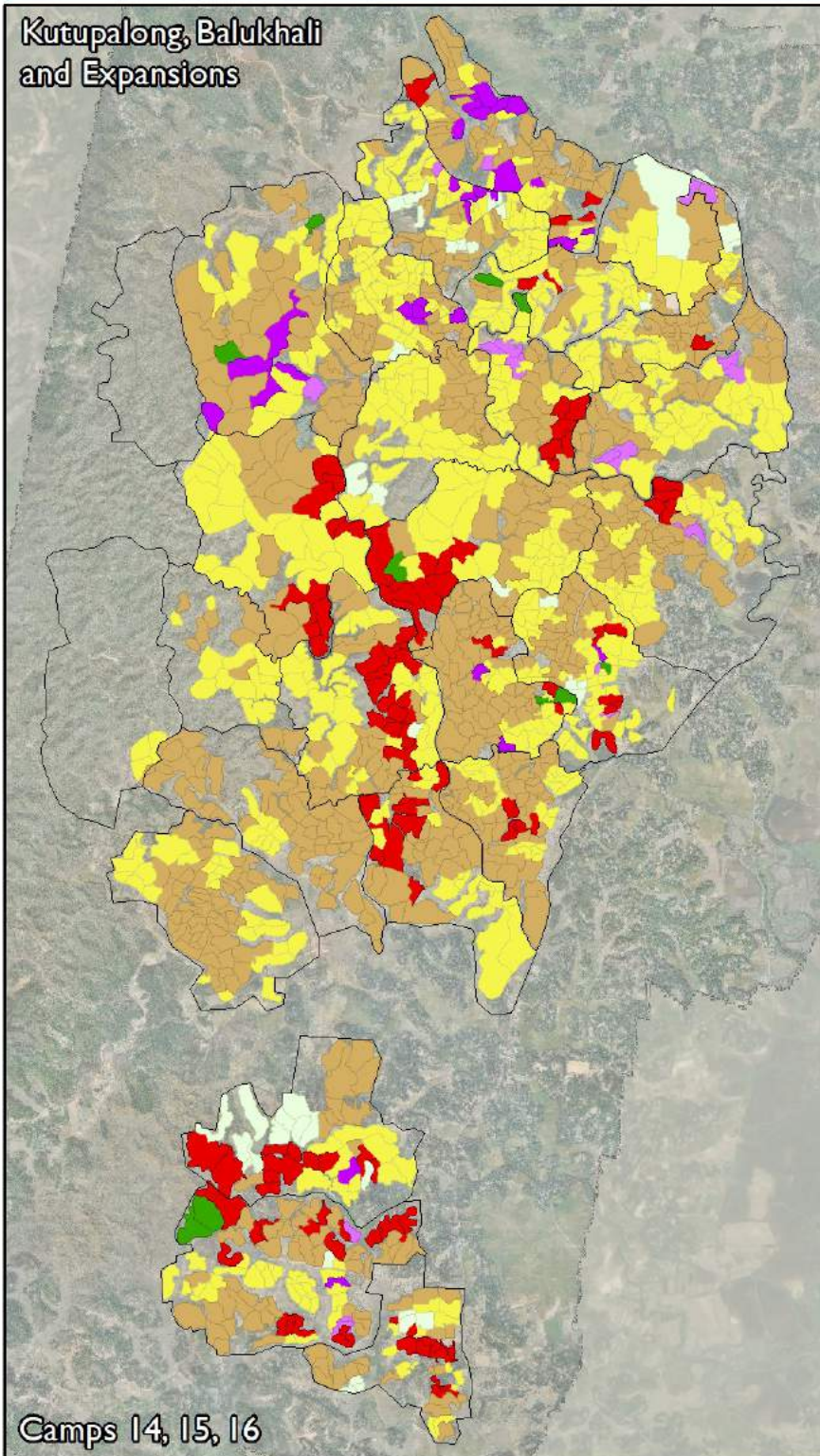
Map production: 17 Jun 2018  
Dates of assessment: 1 - 20 May 2018  
Data sources: IOM NPM, ISCG

- Landslide or flood
- Wild animals
- Unstable structure
- No security concern
- No lighting
- Sharing space with strangers
- Fear of break-in
- No locks

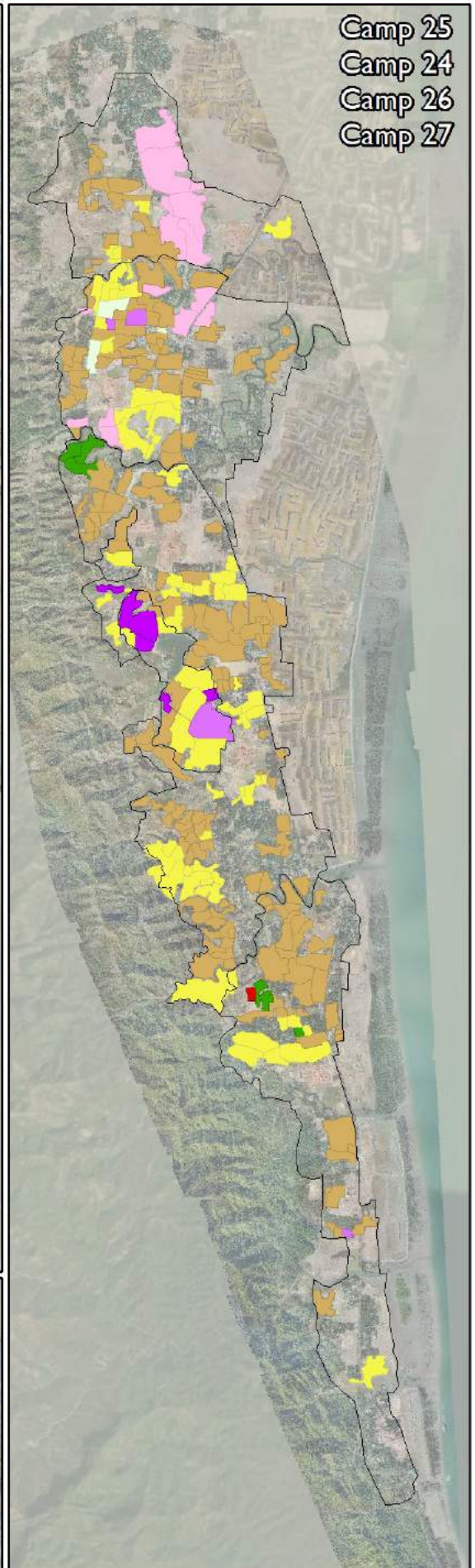


Disclaimer: This map is for illustration purposes only. Names and boundaries on this map do not imply official endorsement or acceptance by IOM.

### Kutupalong, Balukhali and Expansions



Camps 14, 15, 16



Camp 25  
Camp 24  
Camp 26  
Camp 27



Camp 21



Camp 22



Camp 23

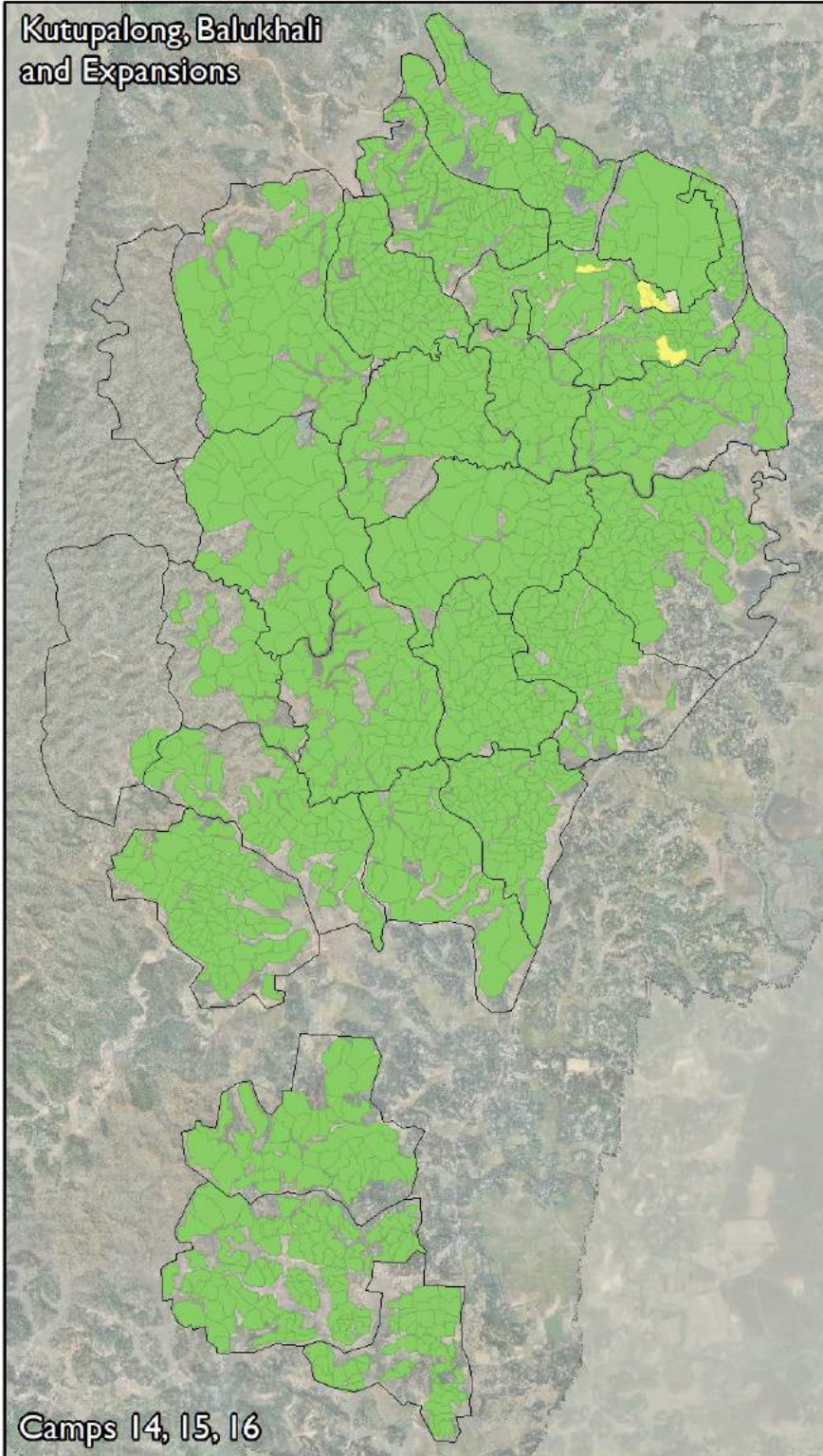
# Shelter Types

Map production: 17 Jun 2018  
Dates of assessment: 1 - 20 May 2018  
Data sources: IOM NPM, ISCG

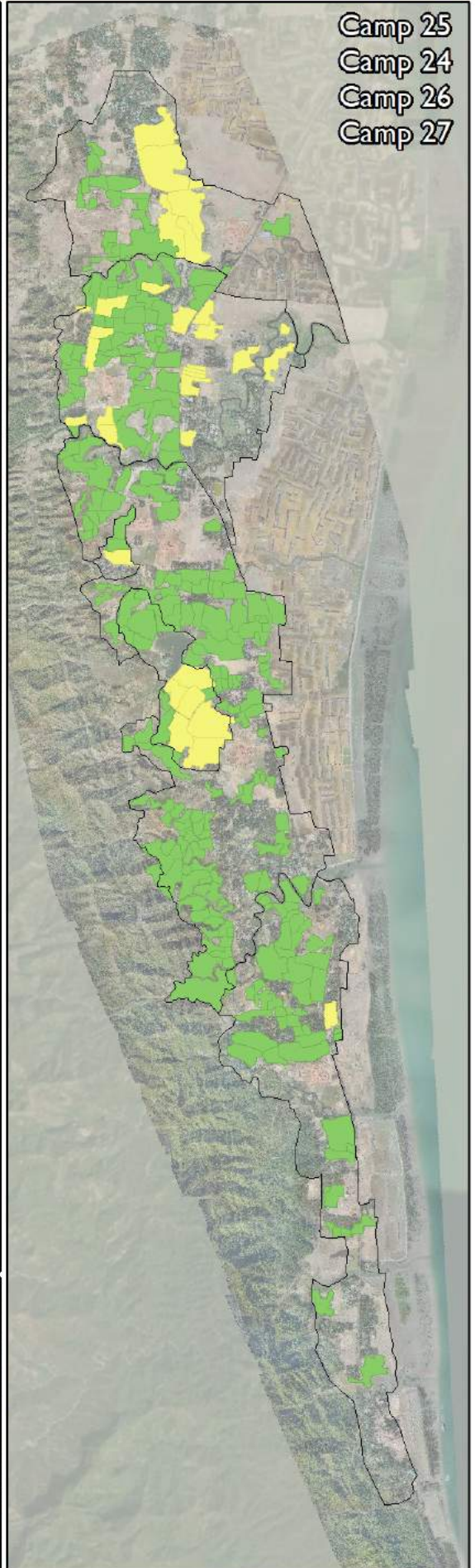
 Jhupri  
 Kutcha

Disclaimer: This map is for illustration purposes only. Names and boundaries on this map do not imply official endorsement or acceptance by IOM.

## Kutupalong, Balukhali and Expansions



## Camp 25 Camp 24 Camp 26 Camp 27



## Camp 21



## Camp 22







## Camp 23



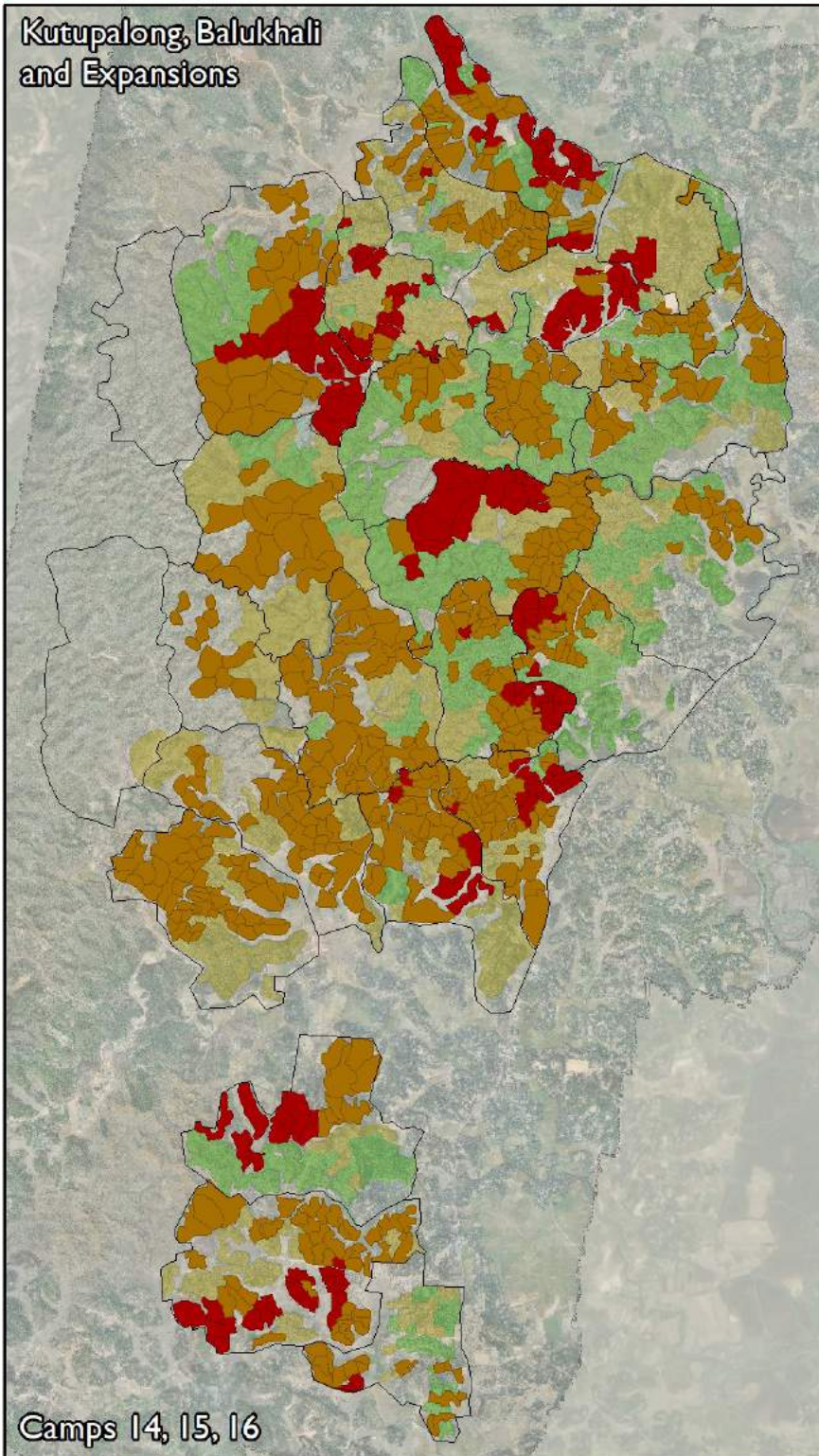
# Community Area Cleanliness

Map production: 17 Jun 2018  
Dates of assessment: 1 - 20 May 2018  
Data sources: IOM NPM, ISCG

-  All / most are clean
-  About half are clean
-  Some are clean
-  Almost none are clean

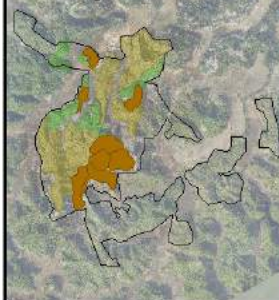
Disclaimer: This map is for illustration purposes only. Names and boundaries on this map do not imply official endorsement or acceptance by IOM.

## Kutupalong, Balukhali and Expansions

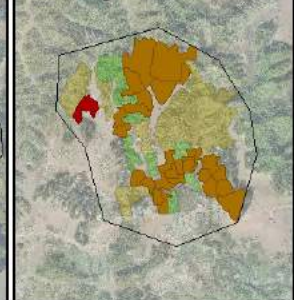


Camps 14, 15, 16

## Camp 21



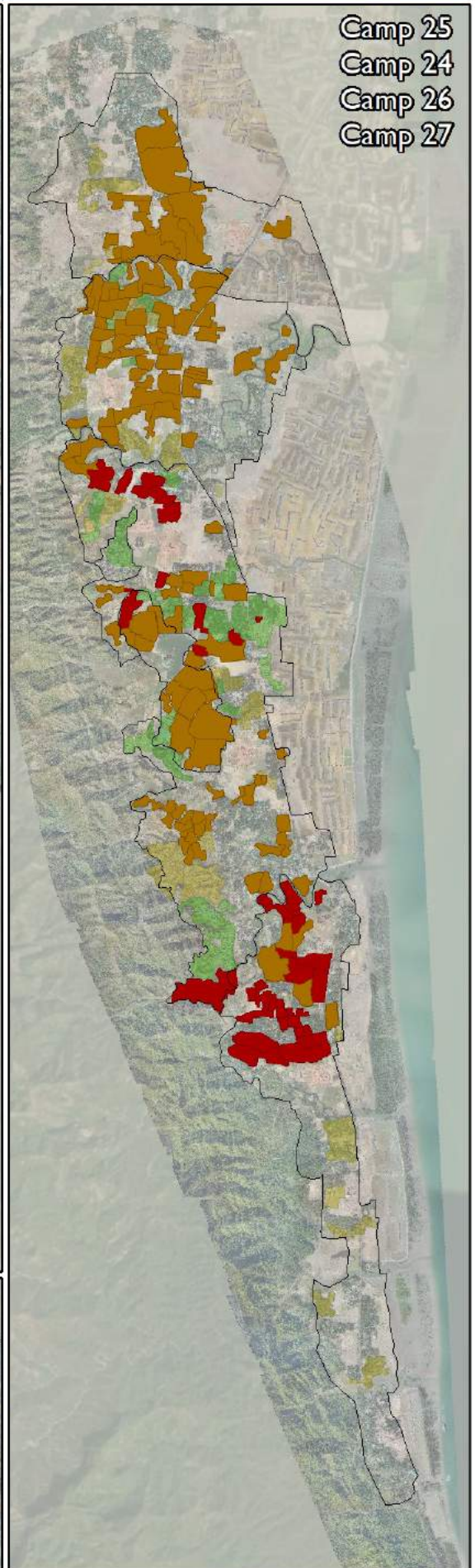
## Camp 22



## Camp 23



## Camp 25 Camp 24 Camp 26 Camp 27



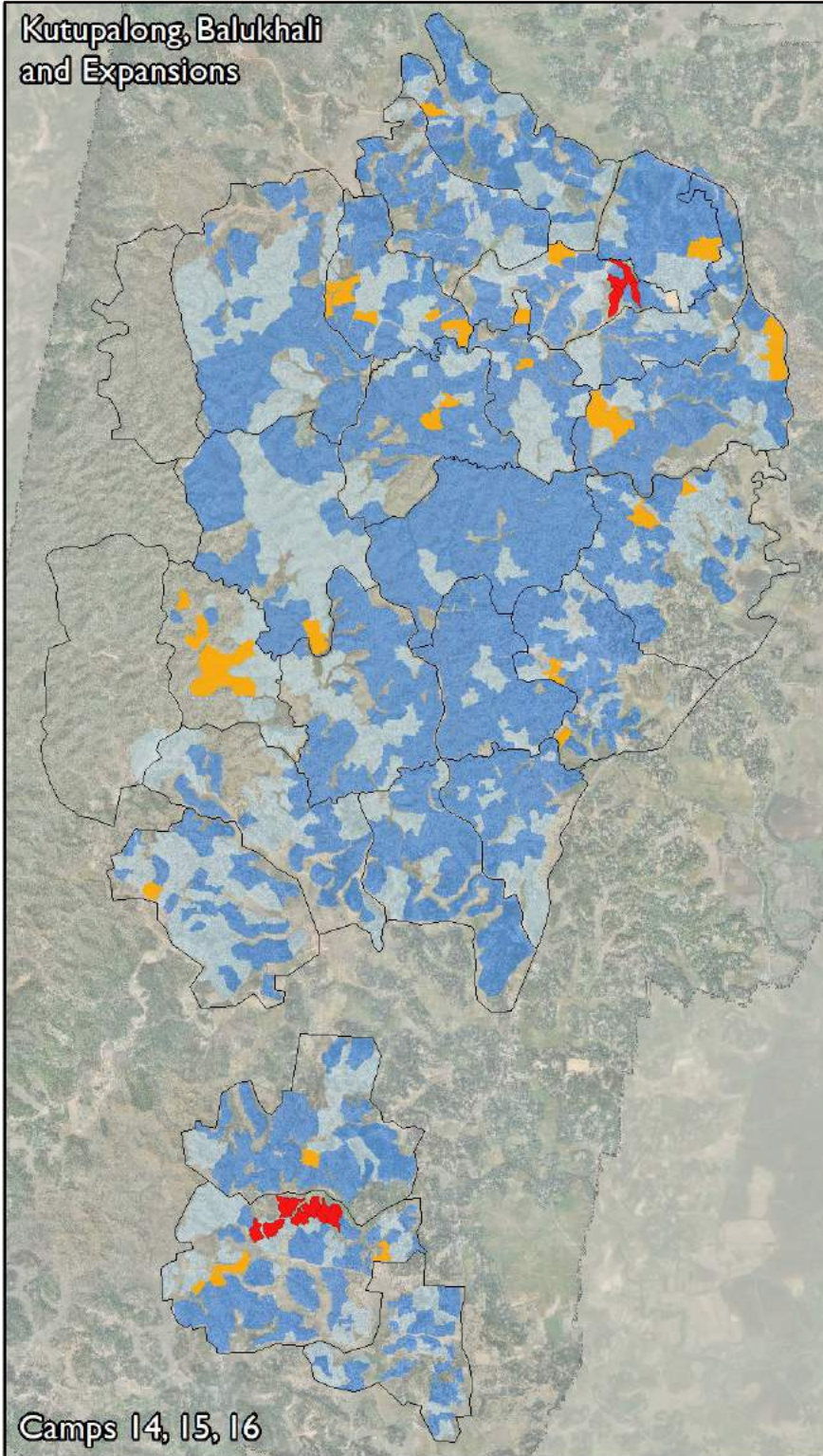
# Access to Drinking Water

Map production: 10 Jun 2018  
Dates of assessment: 1 - 20 May 2018  
Data sources: IOM NPM, ISCG

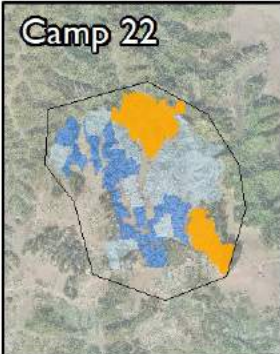
- Most / everyone
- Some
- About half
- Almost nobody

Disclaimer: This map is for illustration purposes only. Names and boundaries on this map do not imply official endorsement or acceptance by IOM.

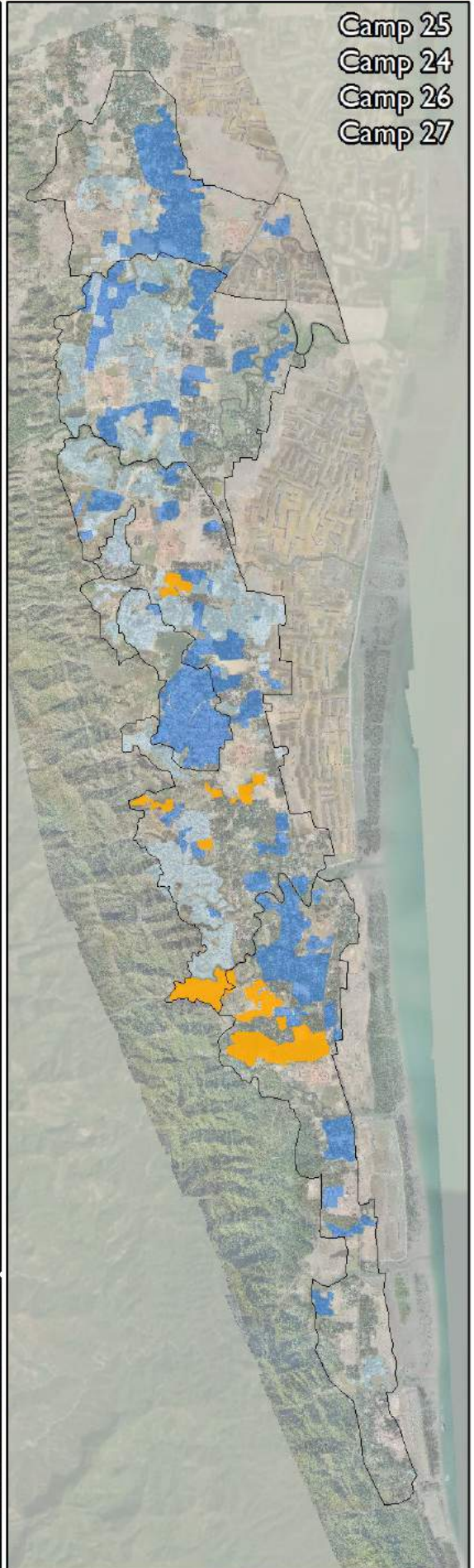
## Kutupalong, Balukhali and Expansions



Camps 14, 15, 16



## Camp 25 Camp 24 Camp 26 Camp 27



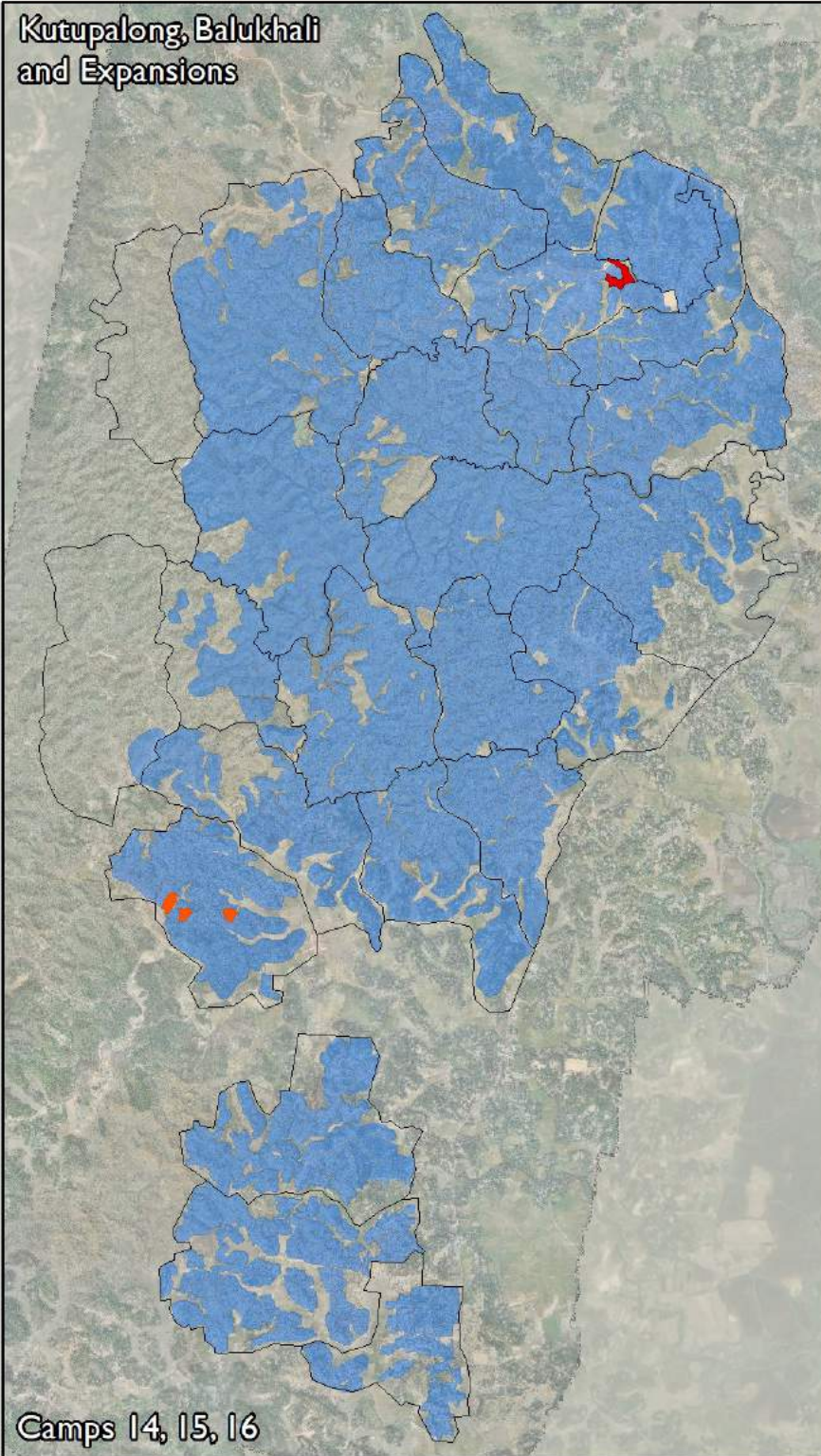
# Primary Source of Drinking Water

Map production: 17 Jun 2018  
Dates of assessment: 1 - 20 May 2018  
Data sources: IOM NPM, ISCG

- Improved
- Non-improved
- No water source

Disclaimer: This map is for illustration purposes only. Names and boundaries on this map do not imply official endorsement or acceptance by IOM.

## Kutupalong, Balukhali and Expansions



Camps 14, 15, 16



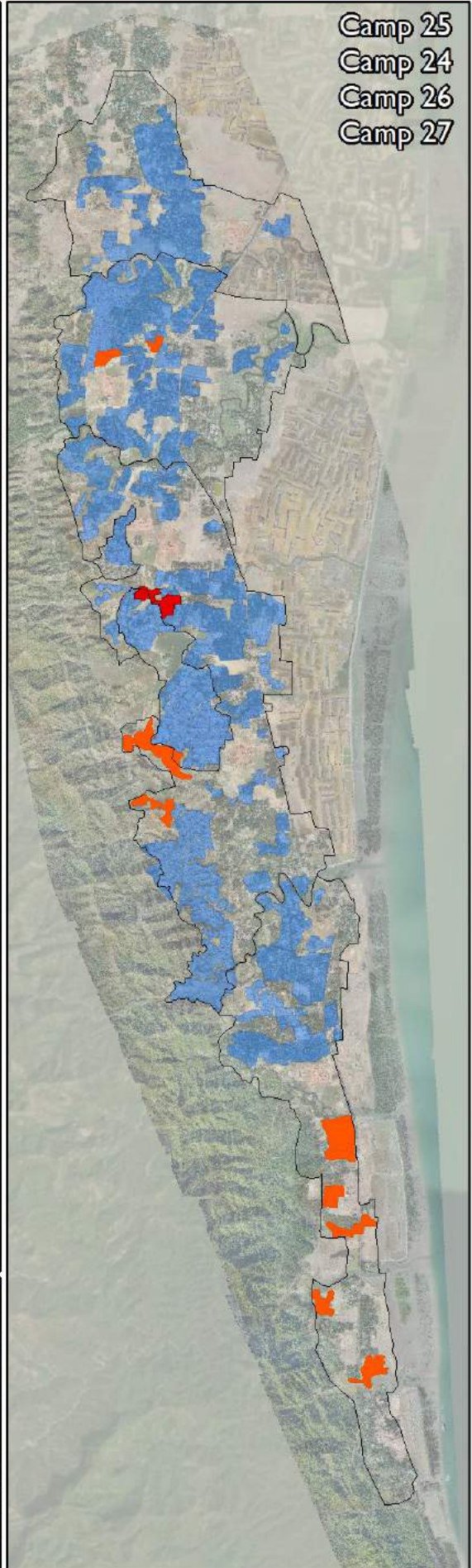
Camp 21



Camp 22



Camp 23



## Camp 25 Camp 24 Camp 26 Camp 27



# NPM Round 10 Site Assessment Thematic Map

## Cooking Fuel Source

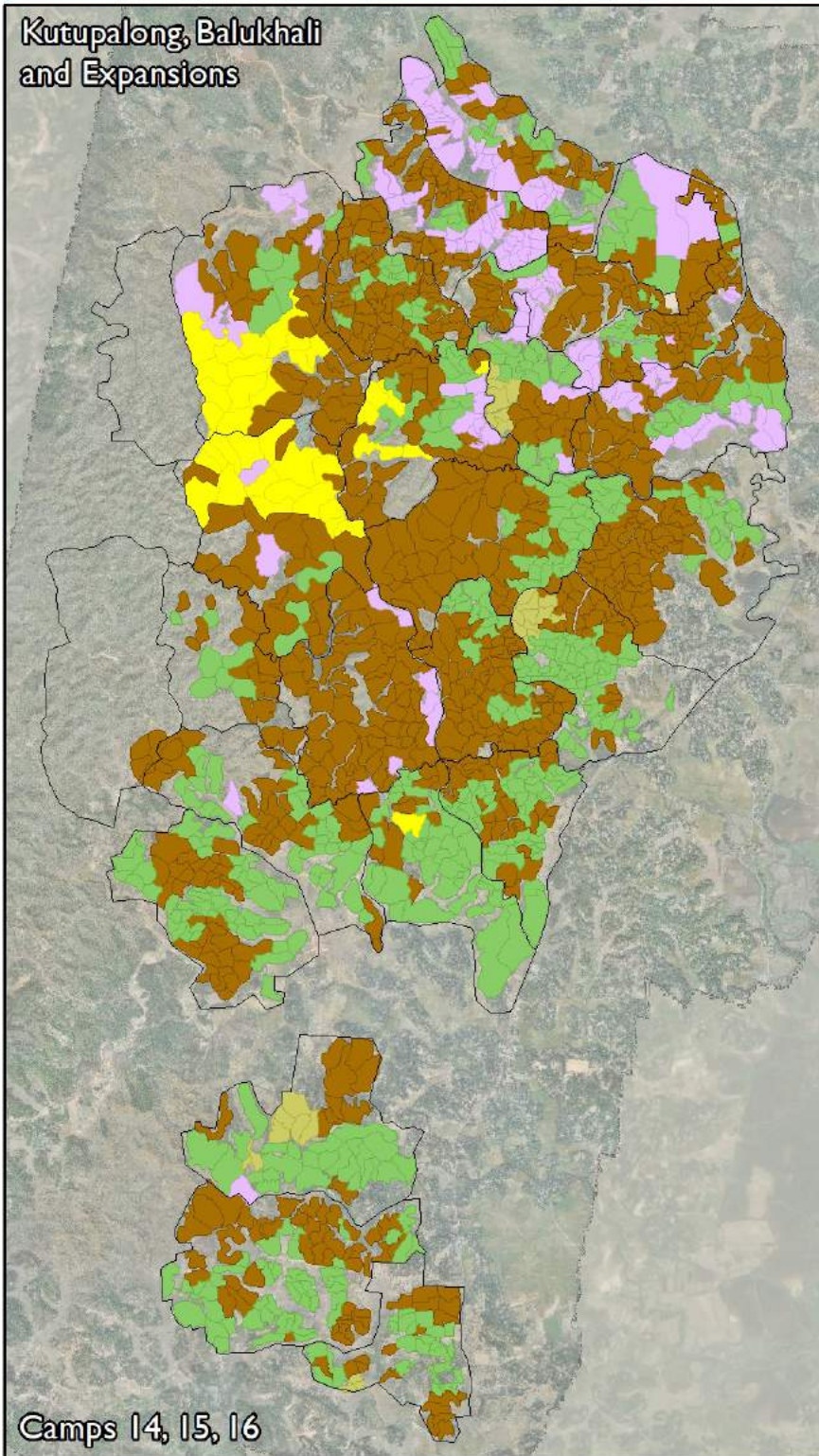
- Purchased firewood
- Self-collected firewood
- Cooking gas cylinder
- Dried animal dung manure
- Other / Unknown

Map production: 10 Jun 2018  
Dates of assessment: 1 - 20 May 2018  
Data sources: IOM NPM, ISCG

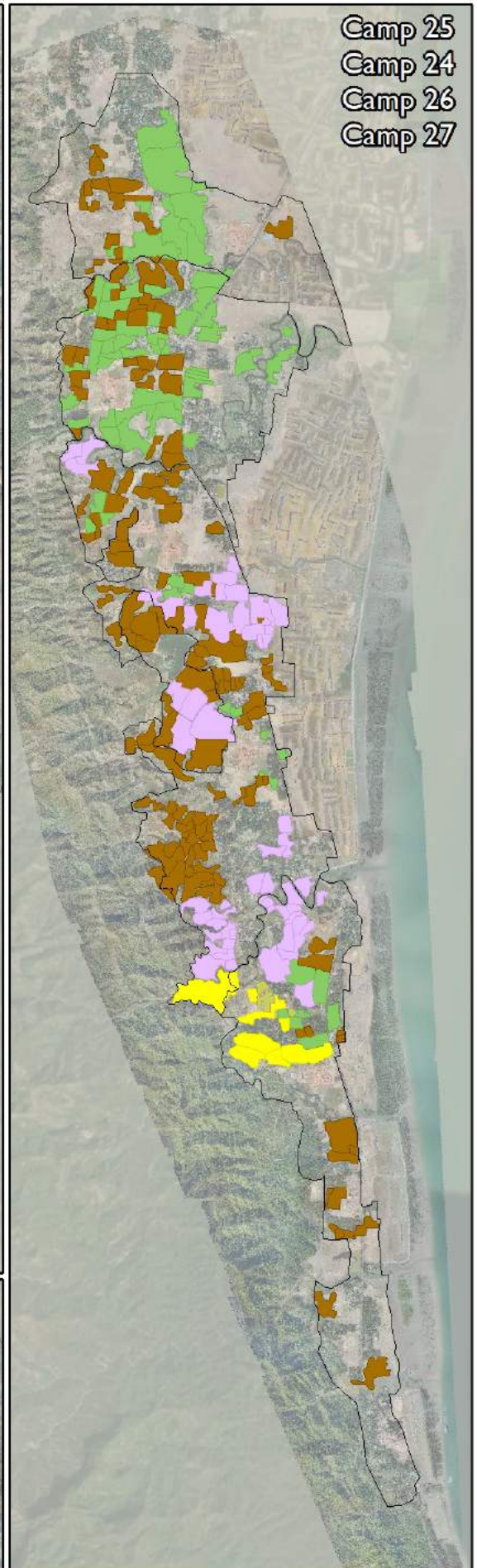


Disclaimer: This map is for illustration purposes only. Names and boundaries on this map do not imply official endorsement or acceptance by IOM.

### Kutupalong, Balukhali and Expansions



Camps 14, 15, 16



Camp 25  
Camp 24  
Camp 26  
Camp 27



Camp 21



Camp 22



Camp 23

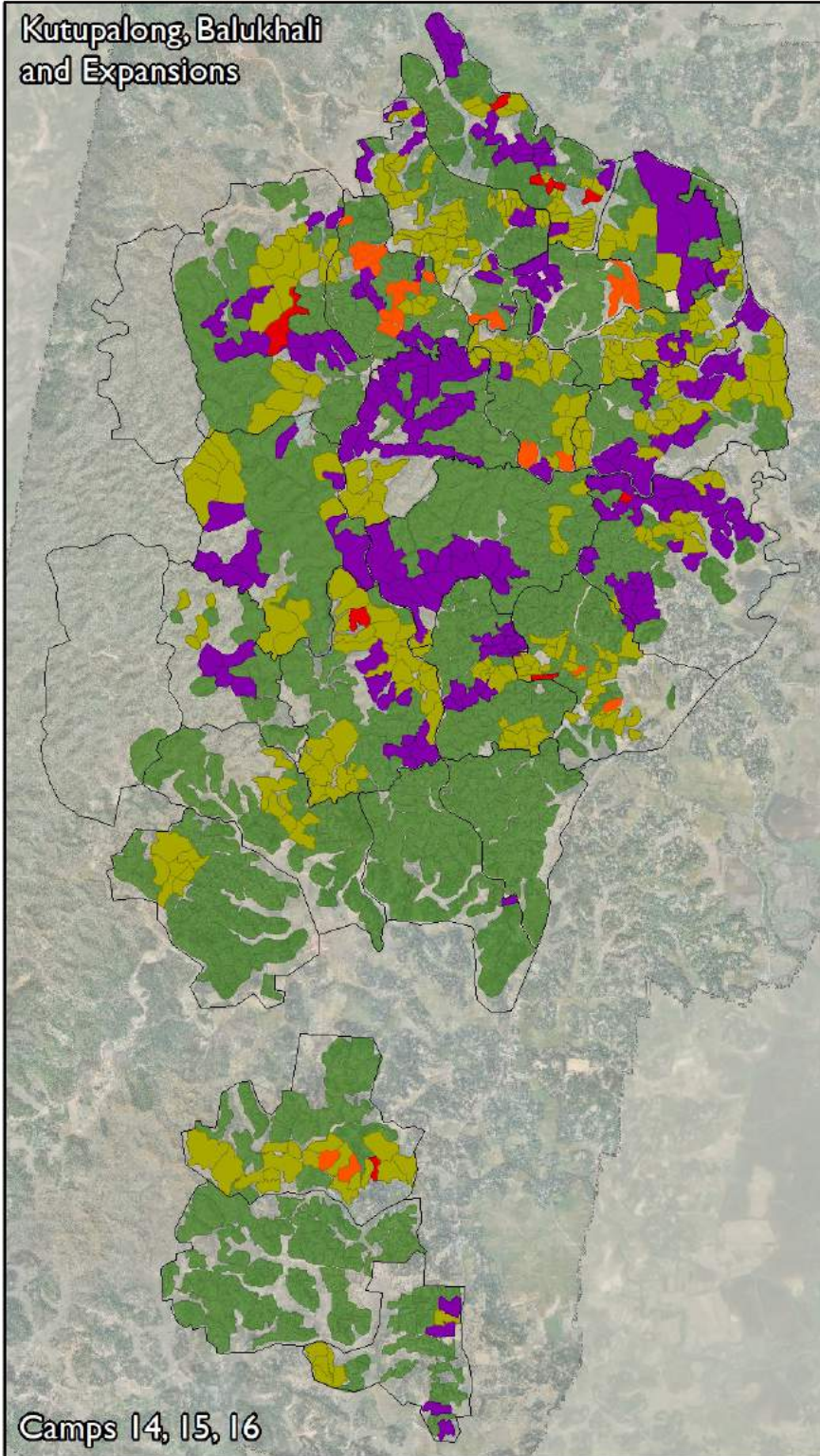
# Education Barriers for Girls

Map production: 17 Jun 2018  
Dates of assessment: 1 - 20 May 2018  
Data sources: IOM NPM, ISCG

- No barriers
- Distance / no transport
- No program / teacher / books
- Safety / security risk
- Social norms

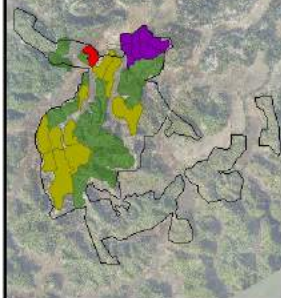
Disclaimer: This map is for illustration purposes only. Names and boundaries on this map do not imply official endorsement or acceptance by IOM.

## Kutupalong, Balukhali and Expansions

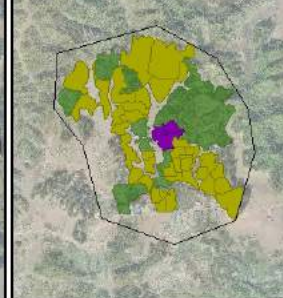


Camps 14, 15, 16

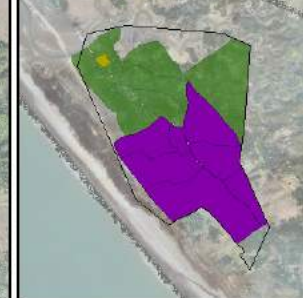
## Camp 21



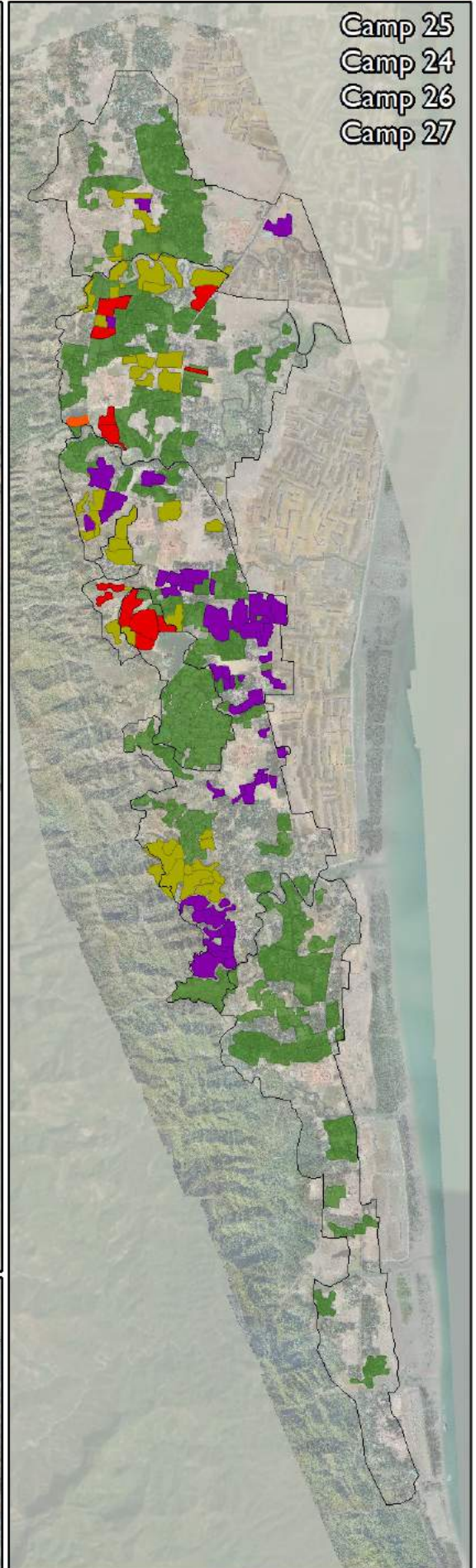
## Camp 22



## Camp 23



## Camp 25 Camp 24 Camp 26 Camp 27



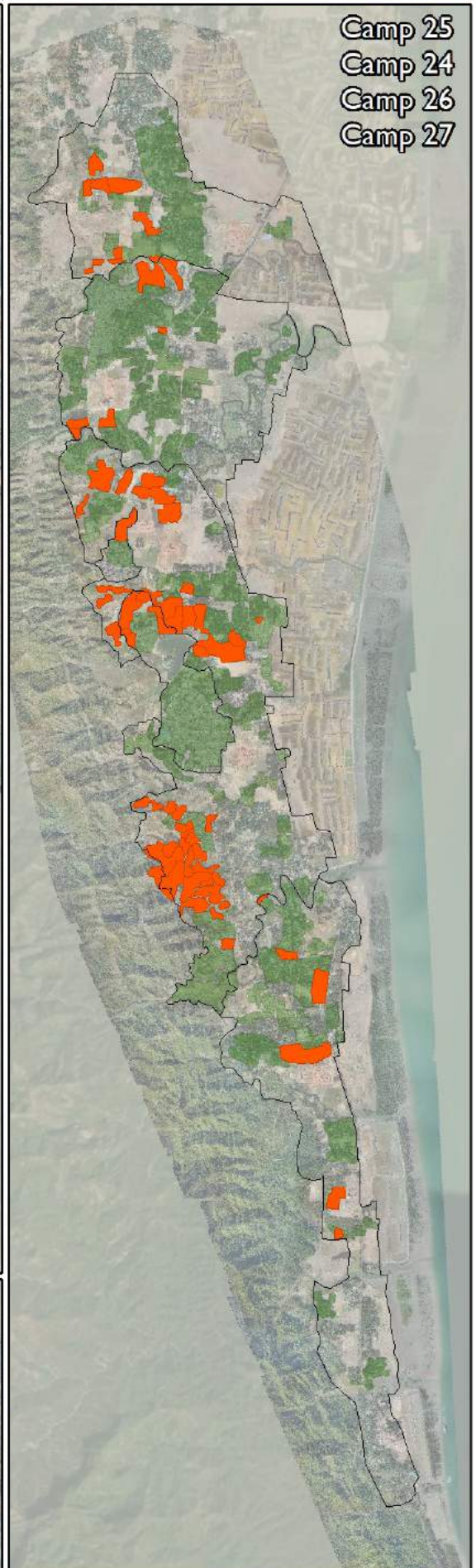
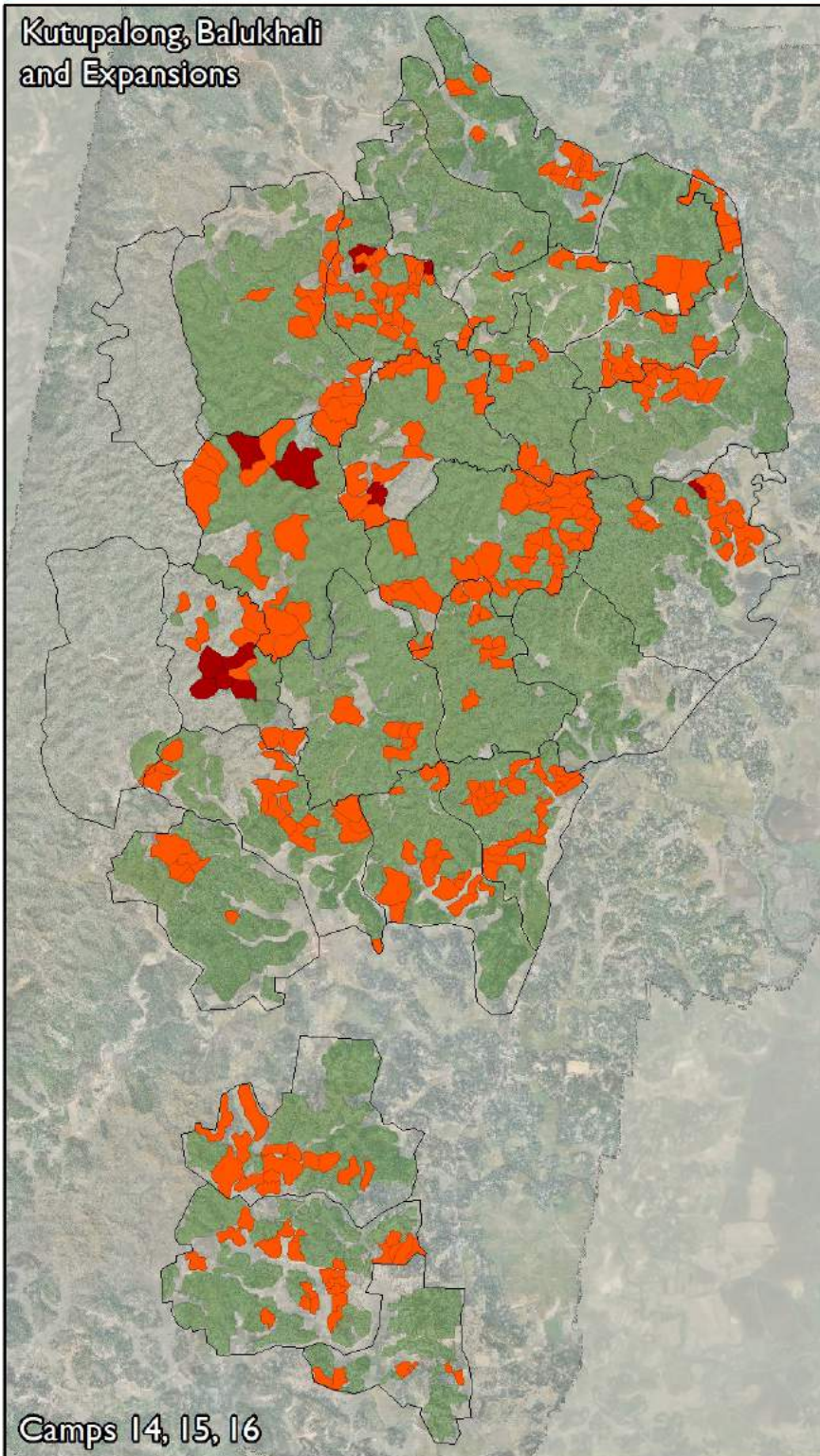
# Access to Health Facilities

Map production: 17 Jun 2018  
Dates of assessment: 1 - 20 May 2018  
Data sources: IOM NPM, ISCG

- Under 30 minutes
- Over 30 minutes
- No access

Disclaimer: This map is for illustration purposes only. Names and boundaries on this map do not imply official endorsement or acceptance by IOM.




## Kutupalong, Balukhali and Expansions



# Income Source

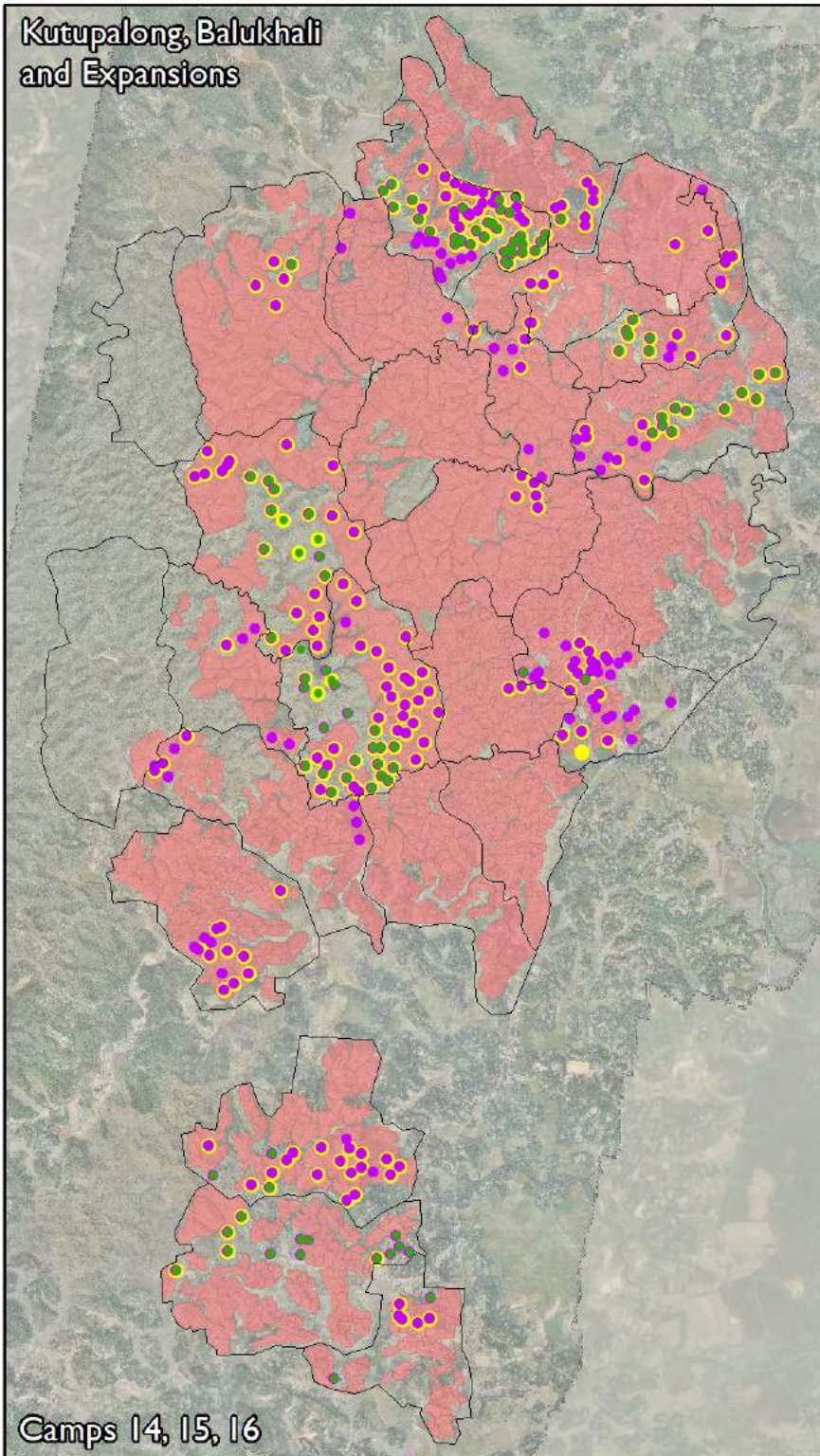
Map production: 10 Jun 2018  
Dates of assessment: 1 - 20 May 2018  
Data sources: IOM NPM, ISCG

 No income

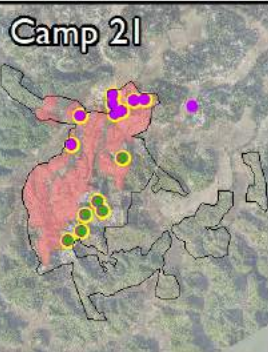
-  Basic needs assistance
-  Labour or trade
-  Sale of humanitarian aid or assets from Myanmar

Disclaimer: This map is for illustration purposes only. Names and boundaries on this map do not imply official endorsement or acceptance by IOM.

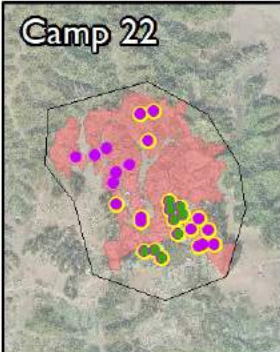
## Kutupalong, Balukhali and Expansions



Camps 14, 15, 16



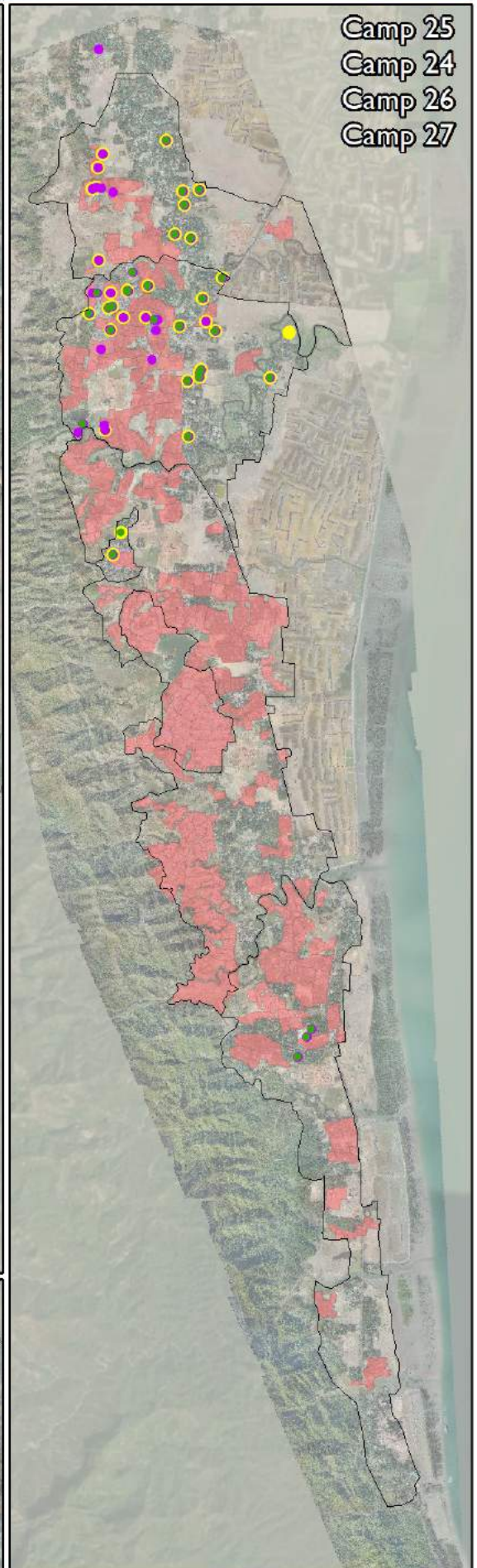
Camp 21



Camp 22



Camp 23



Camp 25  
Camp 24  
Camp 26  
Camp 27