

IDP AND RETURNEE ATLAS — JUNE 2023

MOBILITY TRACKING — ROUND 45 — NORHT-EAST NIGERIA



Photo: Elmiskin Camp I, Maiduguri © IOM 2020 / AWOSINA Phoebe



DTM



NHF

Nigeria
Humanitarian
Fund



USAID
FROM THE AMERICAN PEOPLE



Humanitarian Aid
And Civil Protection



ESTIMATED NUMBERS OF IDPs AND RETURNEES BY STATE

IOM's Displacement Tracking Matrix (DTM) provides support to the Government and humanitarian partners by establishing a comprehensive system that collects, analyses and disseminates data on IDPs and returnees to ensure timely and effective assistance to the affected populations. Data collection takes place at a granular level and is repeated at regular intervals to ensure accurate and up-to-date information.

As of June 2023, the DTM identified a total of 2,295,534 IDPs in 471,346 households and 2,075,257 returnees in 341,895 households. The IDP population included IDPs in camps and camp-like settings (921,201 individuals or 40%) and IDPs residing in host communities (1,374,333 individuals or 60%). The returnee population included IDP returnees (1,866,796 individuals or 90%) and returnees from abroad (208,461 individuals or 10%).

Data collection for IDPs took place between April and June 2023 in 2,348 localities in the six states of north-east Nigeria (Borno, Adamawa, Yobe, Gombe, Taraba and Bauchi). Data collection for returnees took place during the same assessment period in the BAY states of north-east Nigeria (Borno, Adamawa and Yobe).



Number of IDPs **2,295,534** (as of June 2023)

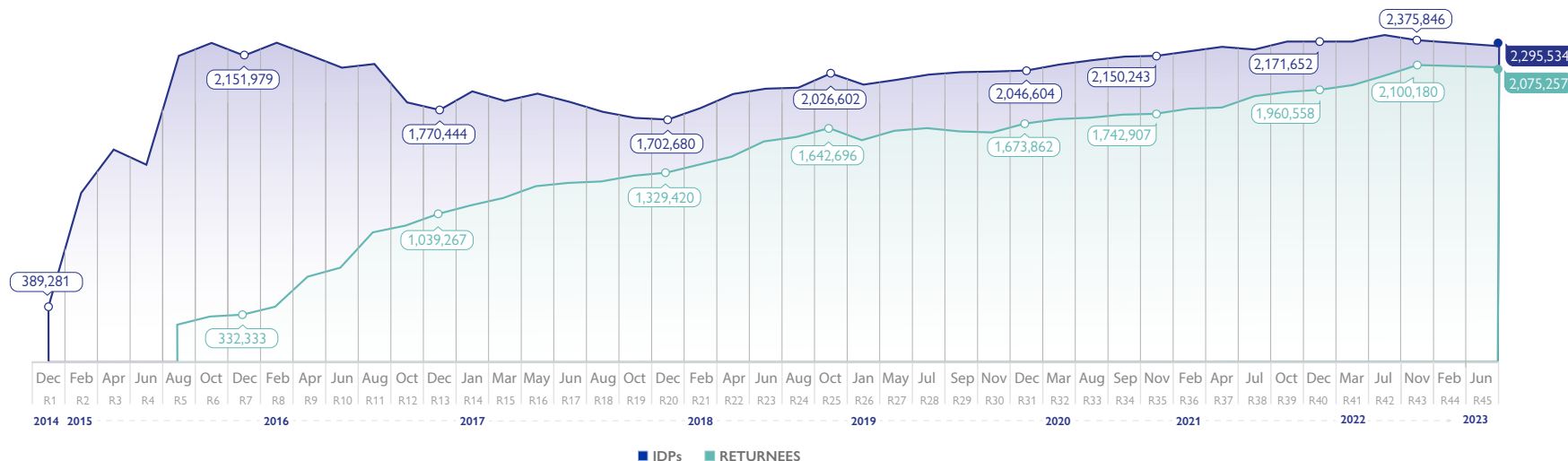


Number of returnees **2,057,257** (as of June 2023)

Estimated number of returnees and IDPs per state

State	IDPs	IDPs (%)	Returnees	Returnees (%)
Adamawa	218,555	11%	857,378	41%
Bauchi	66,310	3%	-	-
Borno	1,697,437	82%	861,756	42%
Gombe	52,243	3%	-	-
Taraba	104,232	5%	-	-
Yobe	156,757	8%	356,123	17%
Total	2,295,534	100%	2,075,257	100%

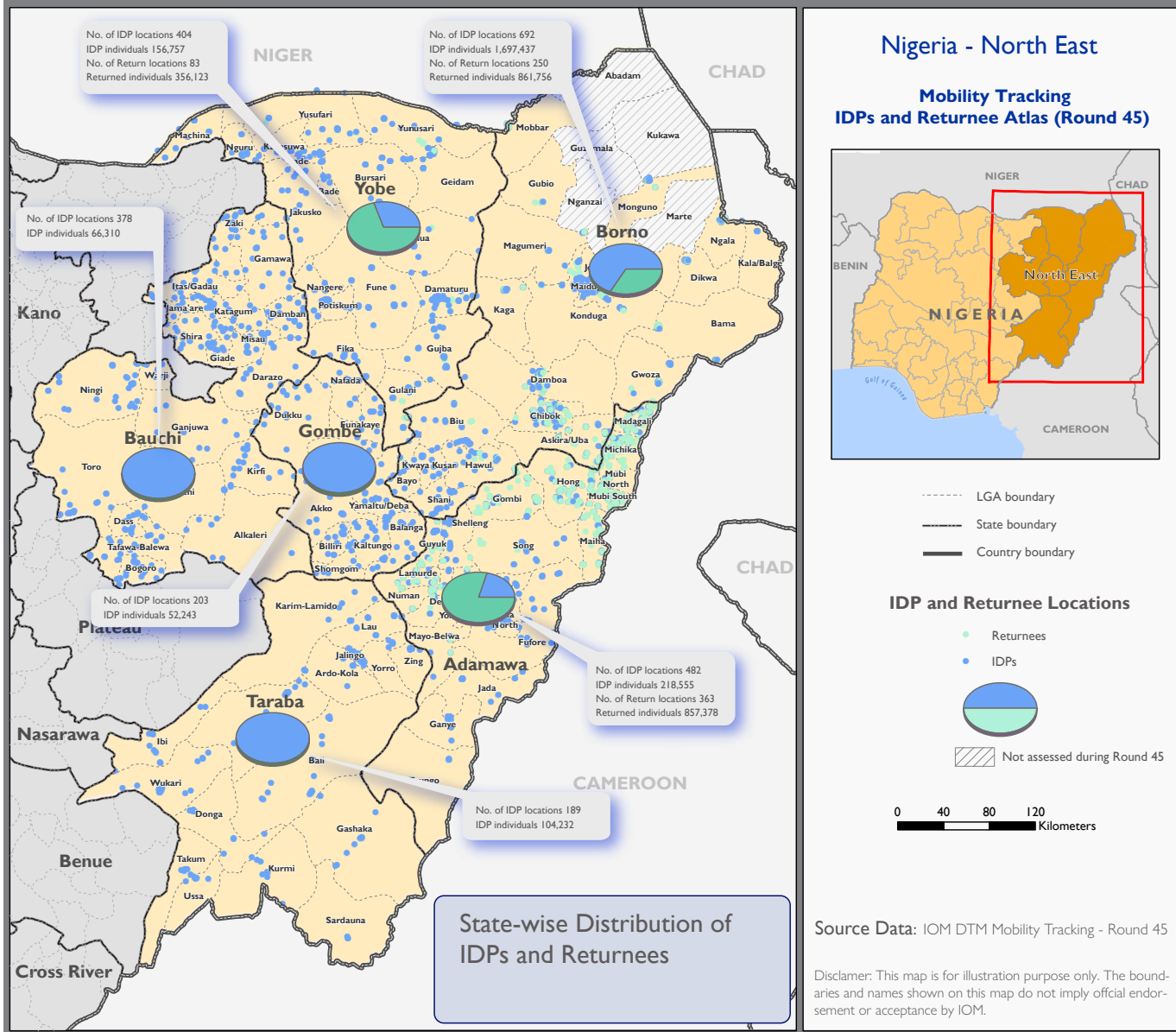
Number of IDPs and returnees over time





IDPs AND RETURNEES IN NORTH-EAST NIGERIA

The location map in A0 format can be accessed on page 18



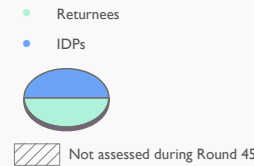
Nigeria - North East

Mobility Tracking IDPs and Returnee Atlas (Round 45)



- LGA boundary
- State boundary
- Country boundary

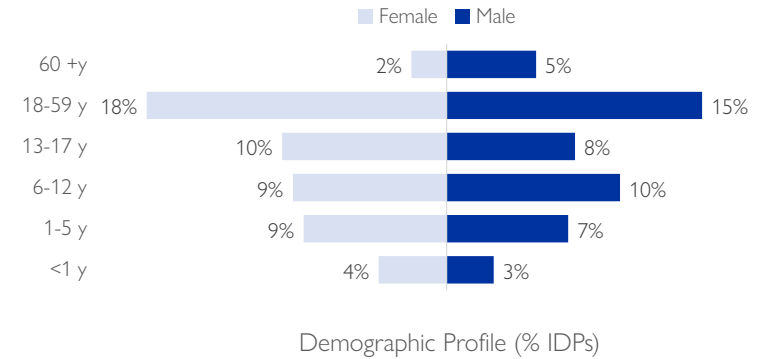
IDP and Returnee Locations



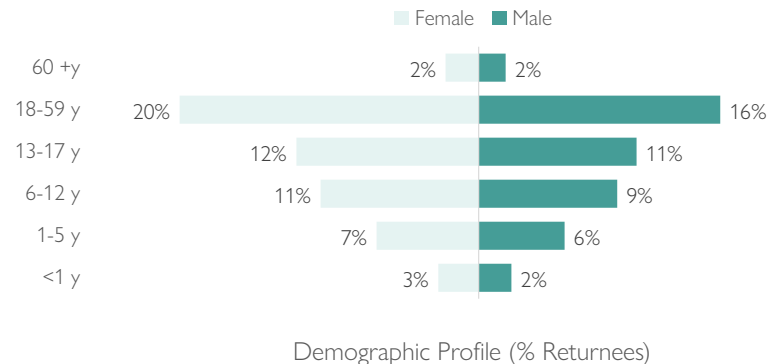
Source Data: IOM DTM Mobility Tracking - Round 45

Disclaimer: This map is for illustration purpose only. The boundaries and names shown on this map do not imply official endorsement or acceptance by IOM.

Sex and Age breakdown of IDPs in north-east Nigeria as of June 2023



Sex and Age breakdown of returnees in north-east Nigeria as of June 2023

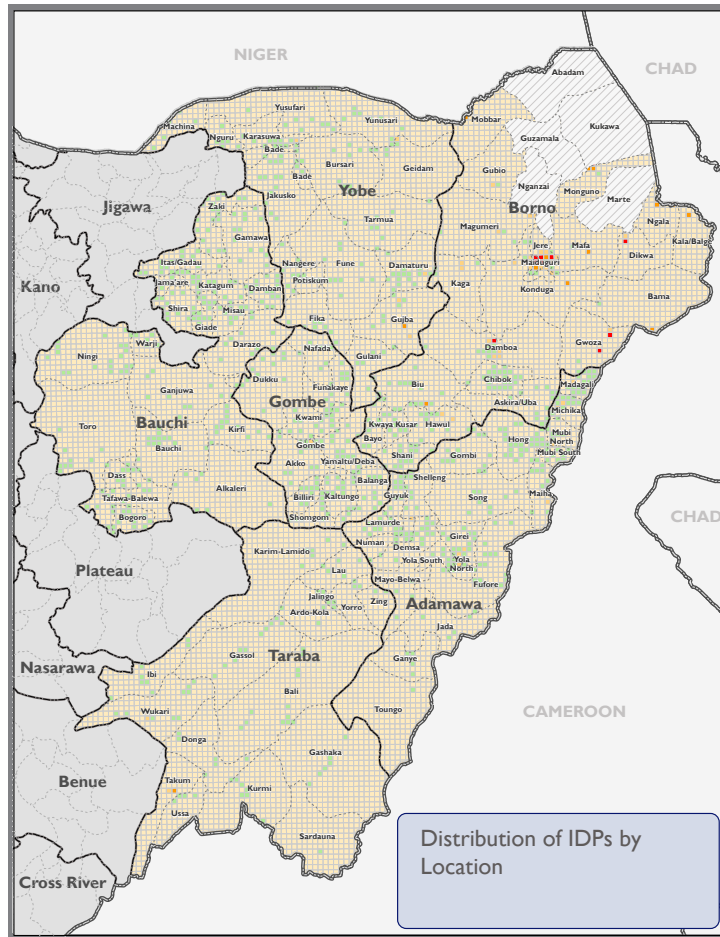




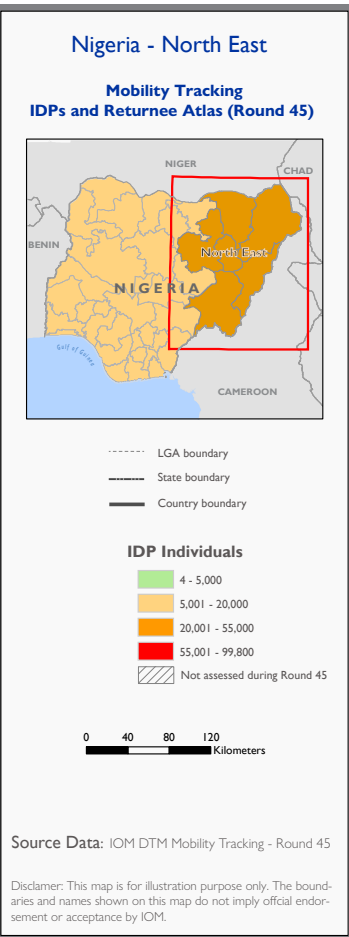
IDP AND RETURNEE LOCATIONS IN NORTH-EAST NIGERIA

IDP locations in north-east Nigeria

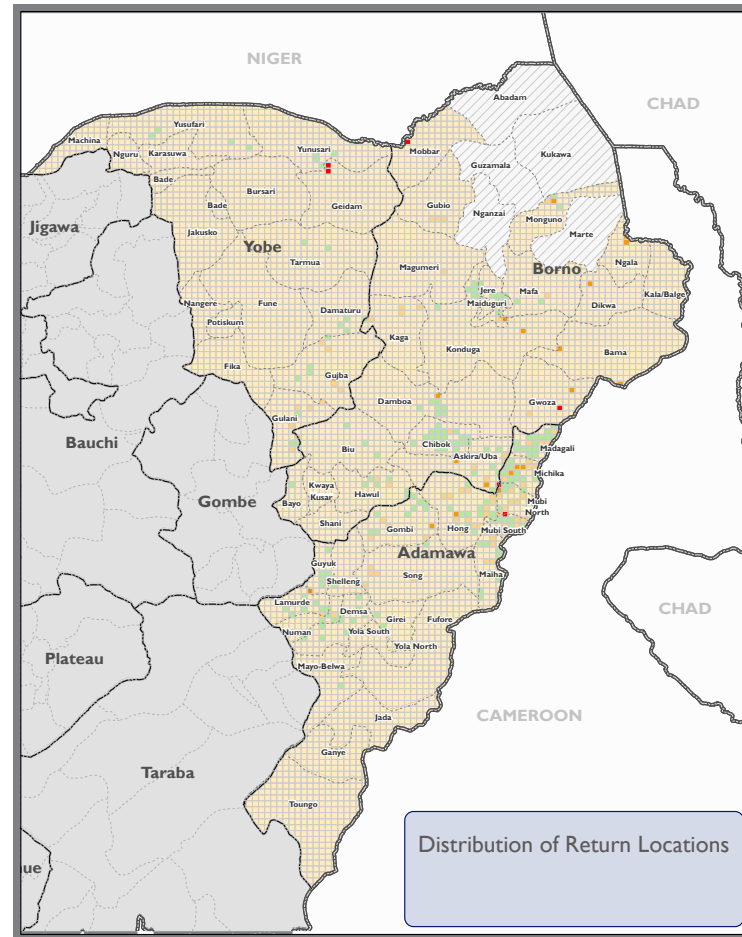
Returnee locations in north-east Nigeria



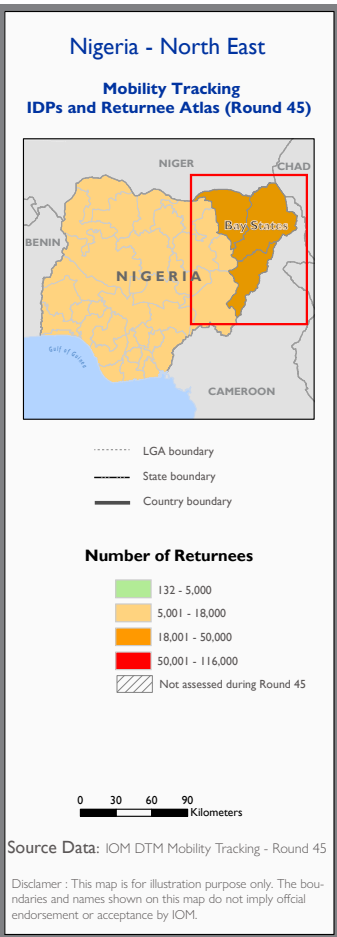
Distribution of IDPs by Location



Source Data: IOM DTM Mobility Tracking - Round 45
 Disclaimer: This map is for illustration purpose only. The boundaries and names shown on this map do not imply official endorsement or acceptance by IOM.



Distribution of Return Locations



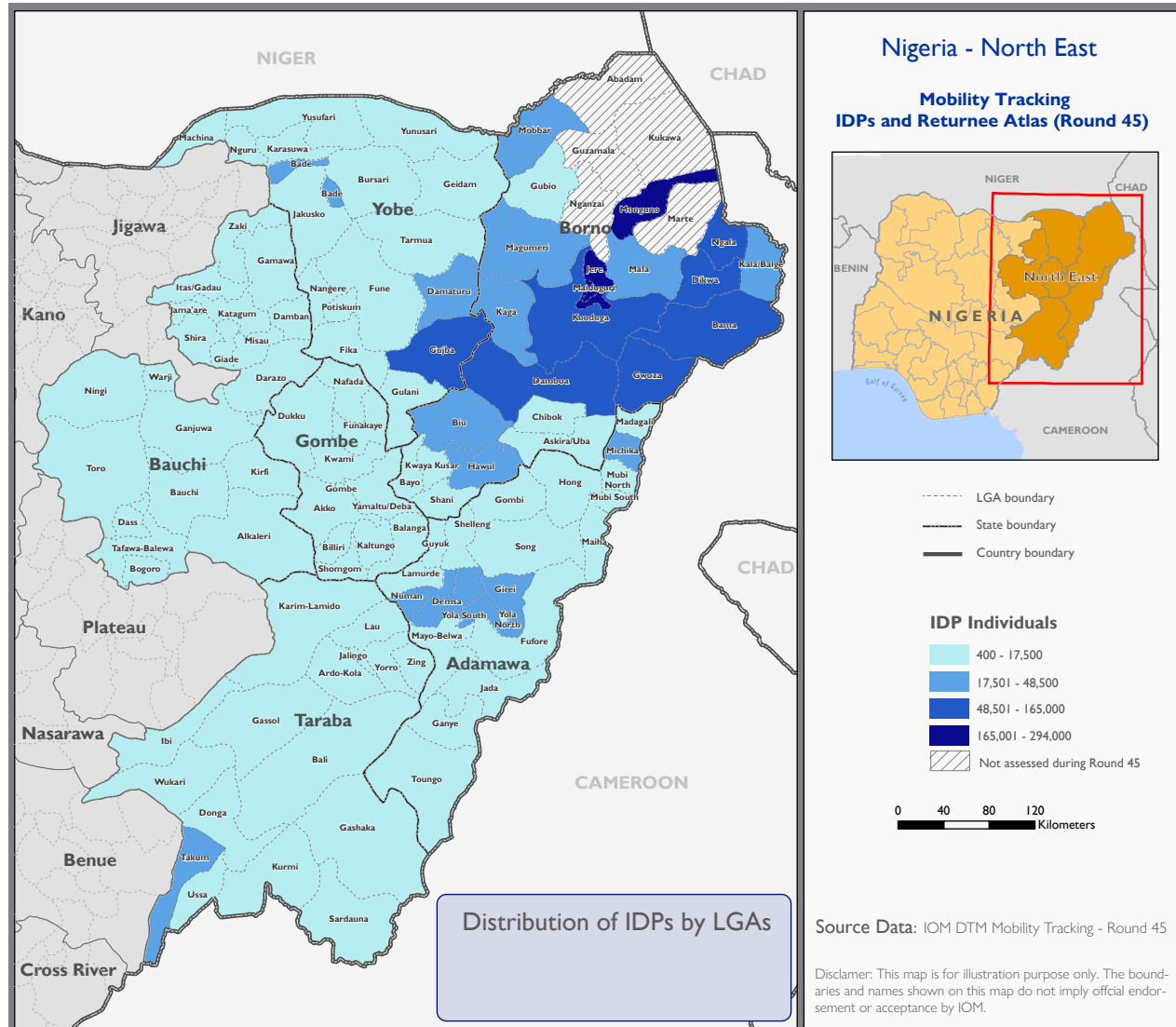
Source Data: IOM DTM Mobility Tracking - Round 45
 Disclaimer: This map is for illustration purpose only. The boundaries and names shown on this map do not imply official endorsement or acceptance by IOM.

The location map in A0 format can be accessed on page 18



IDPs PER LGA AS OF JUNE 2023

A total of 2,295,534 IDPs were identified as of June 2023 in north-east Nigeria. The state of Borno hosted the highest number of IDPs with 1,697,437 individuals (82% of IDPs).



Top 10 LGAs hosting the highest numbers of IDPs in north-east Nigeria as of June 2023
 (Accounting for 63% of the IDPs in north-east Nigeria)

State	LGA	IDPs
Borno	Jere	293,739
Borno	Maiduguri	234,105
Borno	Monguno	165,088
Borno	Gwoza	156,417
Borno	Bama	153,607
Borno	Damboa	108,225
Borno	Ngala	103,858
Borno	Dikwa	97,002
Borno	Konduga	93,211
Yobe	Gujba	48,579

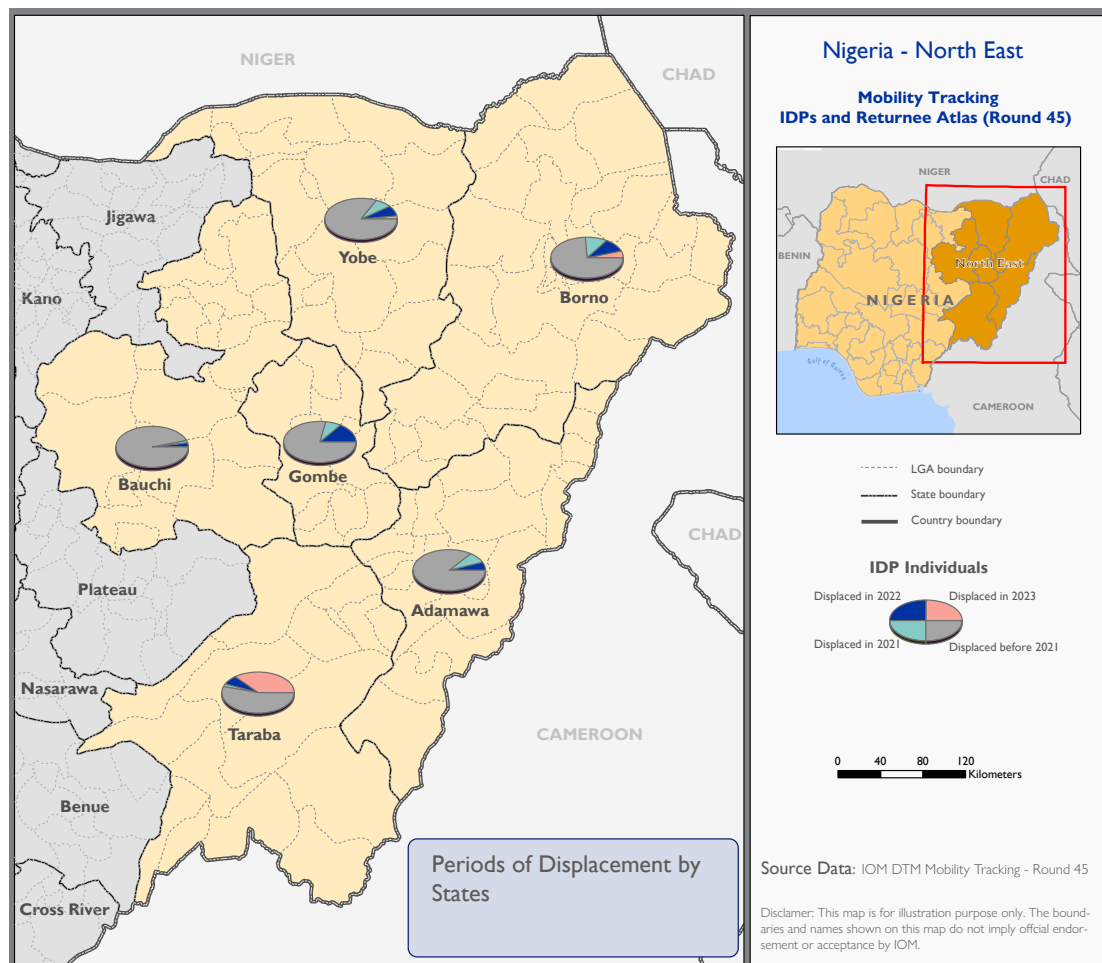
IDPs in camps/camp-like settings vs IDPs dispersed in host communities

State	IDPs in camps / camp-like settings	IDPs in host communities
Adamawa	19,227	199,328
Bauchi	2,015	64,295
Borno	877,299	820,138
Gombe	-	52,243
Taraba	3,209	101,023
Yobe	19,451	137,306
Total	921,201	1,374,333

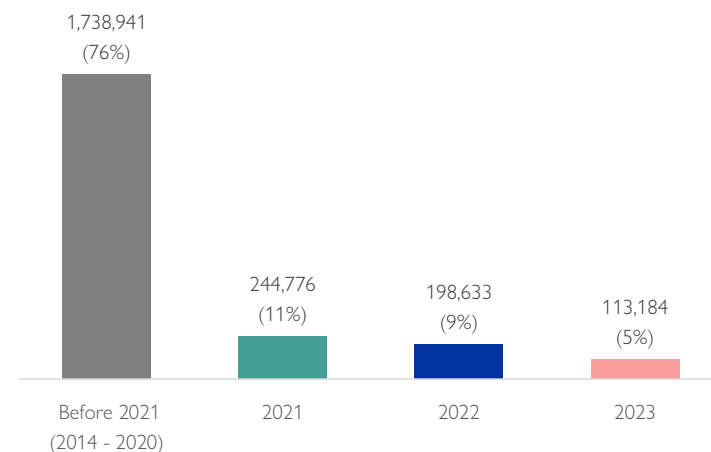
Thirty-five per cent of IDPs in north-east Nigeria are living in camps while 65 per cent of IDPs are dispersed in host communities.

IDPs PER PERIOD OF DISPLACEMENT AT STATE LEVEL

A total of 1,738,941 IDPs or 76 per cent of the total IDP population were displaced before 2021. Twenty-one per cent of the IDP population in north-east Nigeria were displaced in the years 2021 and 2022. Meanwhile, 113,184 new displacements (5%) were reported in the first half of the year 2023. Thirty-eight per cent of these new displacements were as a result of farmers - herders clashes in Ussa LGA of Taraba State, the IDPs were displaced to the neighbouring LGA of Takum in Taraba State.



Total number of IDPs as of June 2023 per periods of displacement



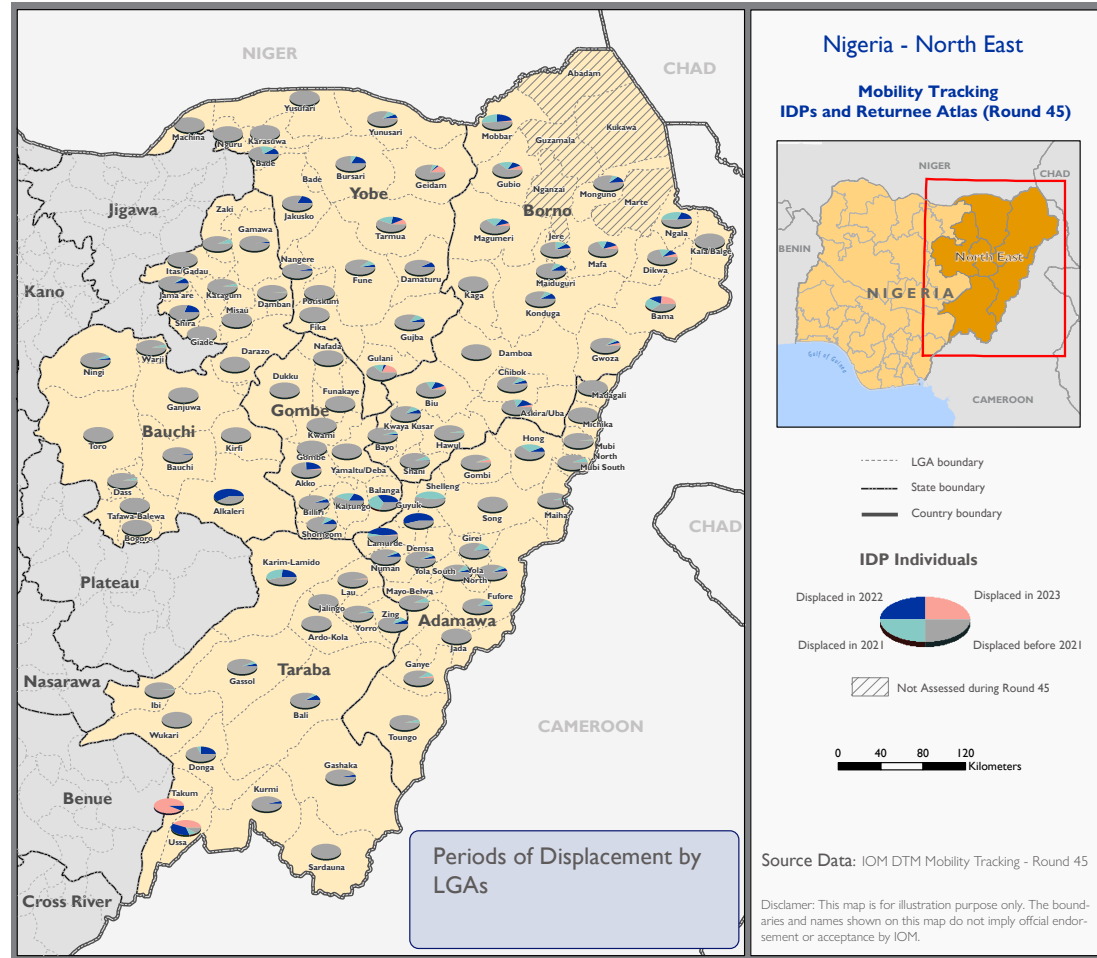
IDPs per periods of displacement at state level

State	Before 2021 (2014 - 2020)	2021	2022	2023
Adamawa	87%	7%	5%	0%
Bauchi	96%	1%	3%	0%
Borno	74%	12%	10%	4%
Gombe	78%	8%	13%	0%
Taraba	54%	2%	6%	38%
Yobe	84%	8%	6%	2%
Total	76%	11%	9%	5%



IDPs PER YEAR OF DISPLACEMENT AT LGA LEVEL

As indicated on the map below, newly displaced IDPs (as of June 2023) are predominantly found around Takum LGA in Taraba State, and in the eastern LGAs of Borno State towards the border with Benue State which is the epicentre of farmers and herders clashes in Nigeria. It is to be noted that 8 out of 10 LGAs accounting for the highest numbers of IDP arrivals in the first half of 2023 are all located in Borno State.



IDPs per periods of displacement in the top 10 LGAs with the highest number of IDPs

State	LGA	Before 2021 (2014 - 2020)	2021	2022	2023
Borno	Bama	38%	21%	17%	24%
Borno	Damboa	97%	1%	1%	1%
Borno	Dikwa	71%	15%	9%	5%
Borno	Gwoza	87%	5%	4%	4%
Borno	Jere	75%	15%	8%	2%
Borno	Konduga	82%	8%	9%	0%
Borno	Maiduguri	80%	9%	10%	1%
Borno	Monguno	81%	7%	10%	2%
Borno	Ngala	50%	32%	17%	1%
Yobe	Gujba	84%	11%	5%	1%

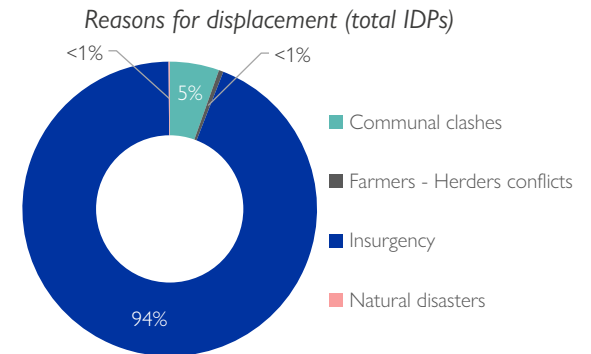
Top 10 LGAs accounting for the highest numbers of IDP arrivals in 2023
(Accounting for 92% of the IDPs displaced in 2023)

State	LGA	IDPs
Taraba	Takum	38,885
Borno	Bama	36,290
Borno	Gwoza	6,319
Borno	Jere	6,287
Borno	Dikwa	5,133
Borno	Biu	2,531
Borno	Monguno	2,527
Borno	Mafa	2,368
Borno	Magumeri	1,755
Yobe	Geidam	1,501

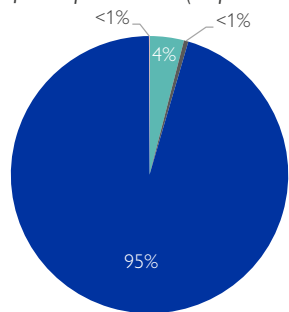


IDPs AND REASONS FOR DISPLACEMENT

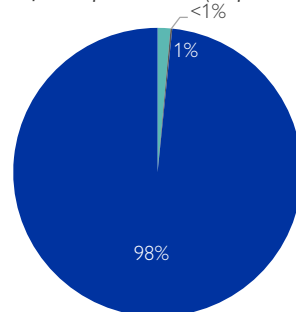
The ongoing insurgency in north-east Nigeria is widely reported as the main driver of displacement. Insurgency was followed by communal clashes, natural disasters, and, in recent times, farmers - herders conflicts. These clashes involve confrontations between ethnic and religious groups, often triggered by land and border issues, and increasing tensions between herder communities and sedentary farmers. It is notable that the majority of IDPs displaced by the insurgency are located in the LGAs Bama, Damboa, Gwoza, Jere, Konduga, Maiduguri M.C., Monguno and Ngala of Borno State. The IDPs displaced as a result of communal clashes are concentrated in the north-western part of Adamawa State, southern part of Borno, Taraba State, Gombe State and western Bauchi. While communal clashes accounted for 4 per cent of the displacements before the year 2021, they were cited as the main trigger of displacement by 35 per cent of the IDPs displaced in 2023.



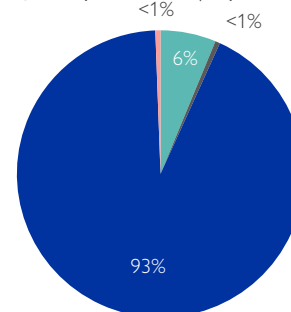
Reasons for displacement (displaced before 2021)



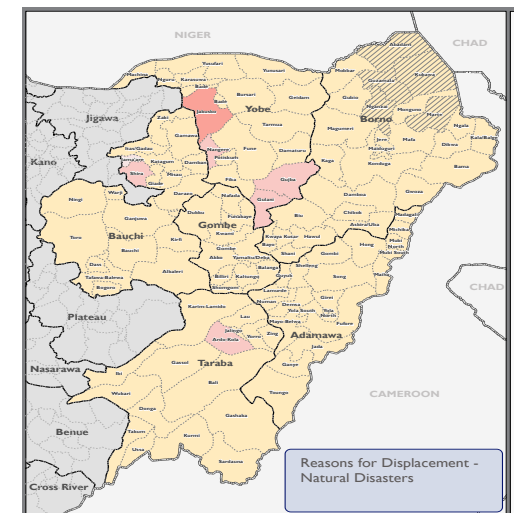
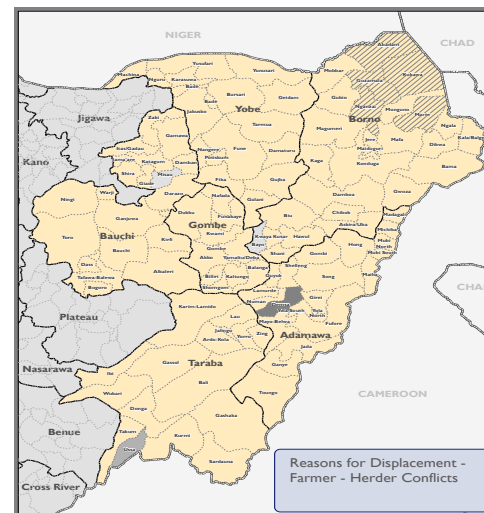
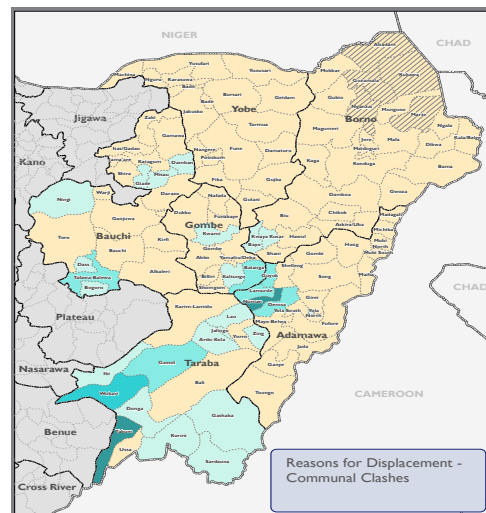
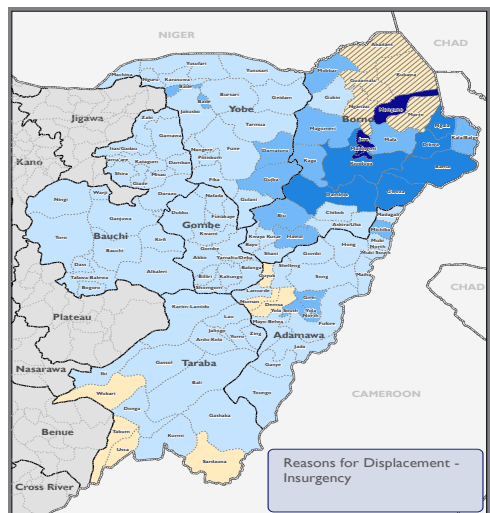
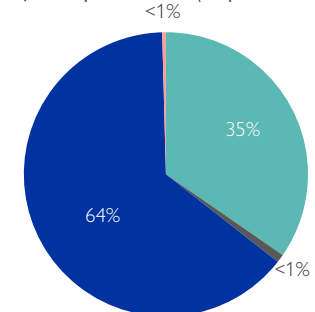
Reasons for displacement (displaced in 2021)



Reasons for displacement (displaced in 2022)



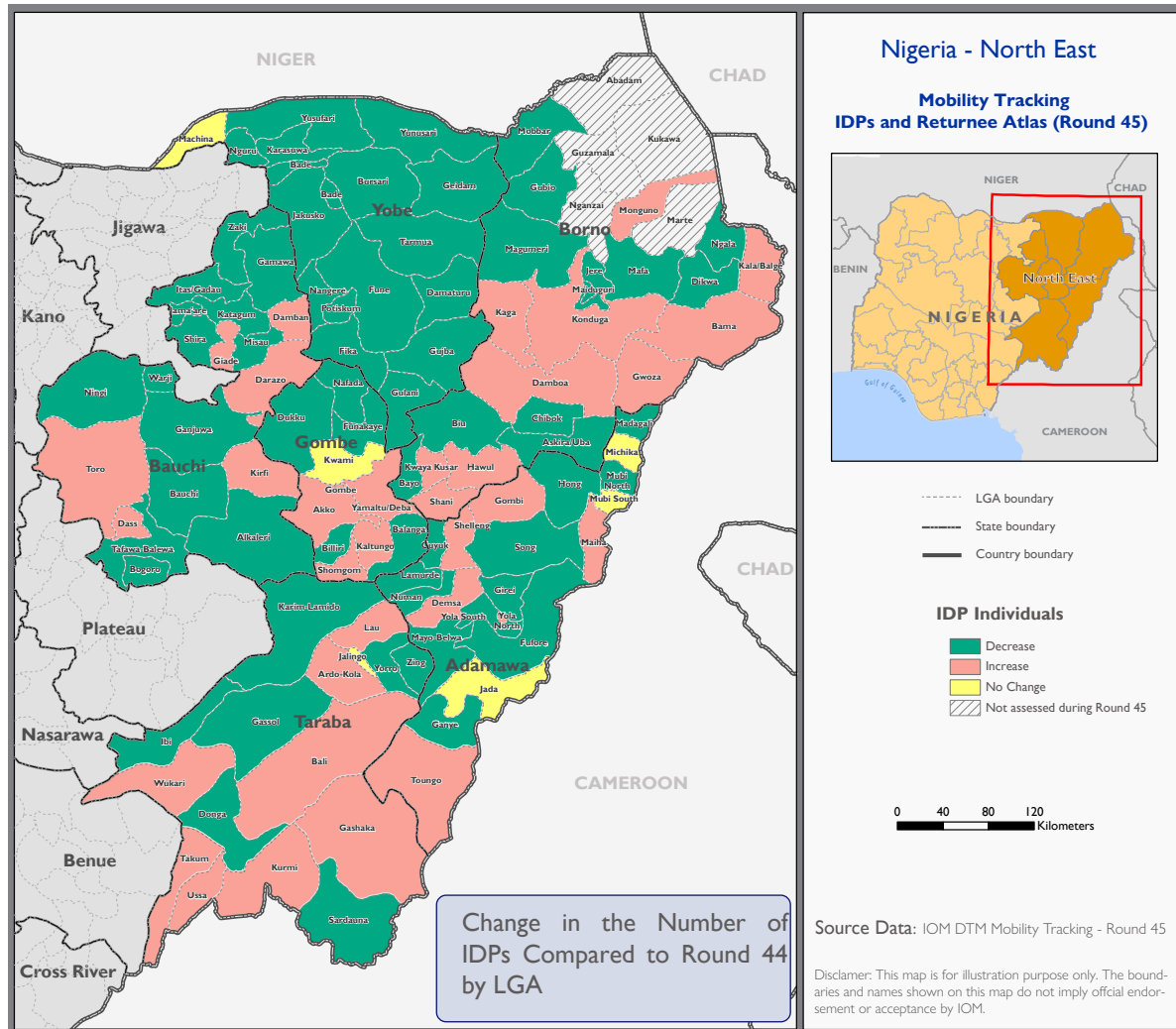
Reasons for displacement (displaced in 2023)



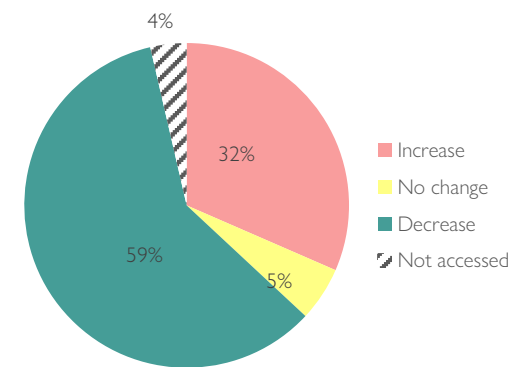


IDP COMPARISON AT LGA LEVEL (FEBRUARY - JUNE 2023)

The map below compares IDP population from June 2023 with IDP population from February 2023 at the LGA level. In 59 per cent of the LGAs, the number of IDPs increased while in 32 per cent of the LGAs, the number of IDPs decreased. A major increase in IDPs was noted in Takum LGA (37,355 IDPs) as a result of displacements from farmers and herders clashes in Ussa LGA of Taraba State.



Percentage of LGAs and change in IDP population



Top LGAs with the highest IDP increase since February 2023

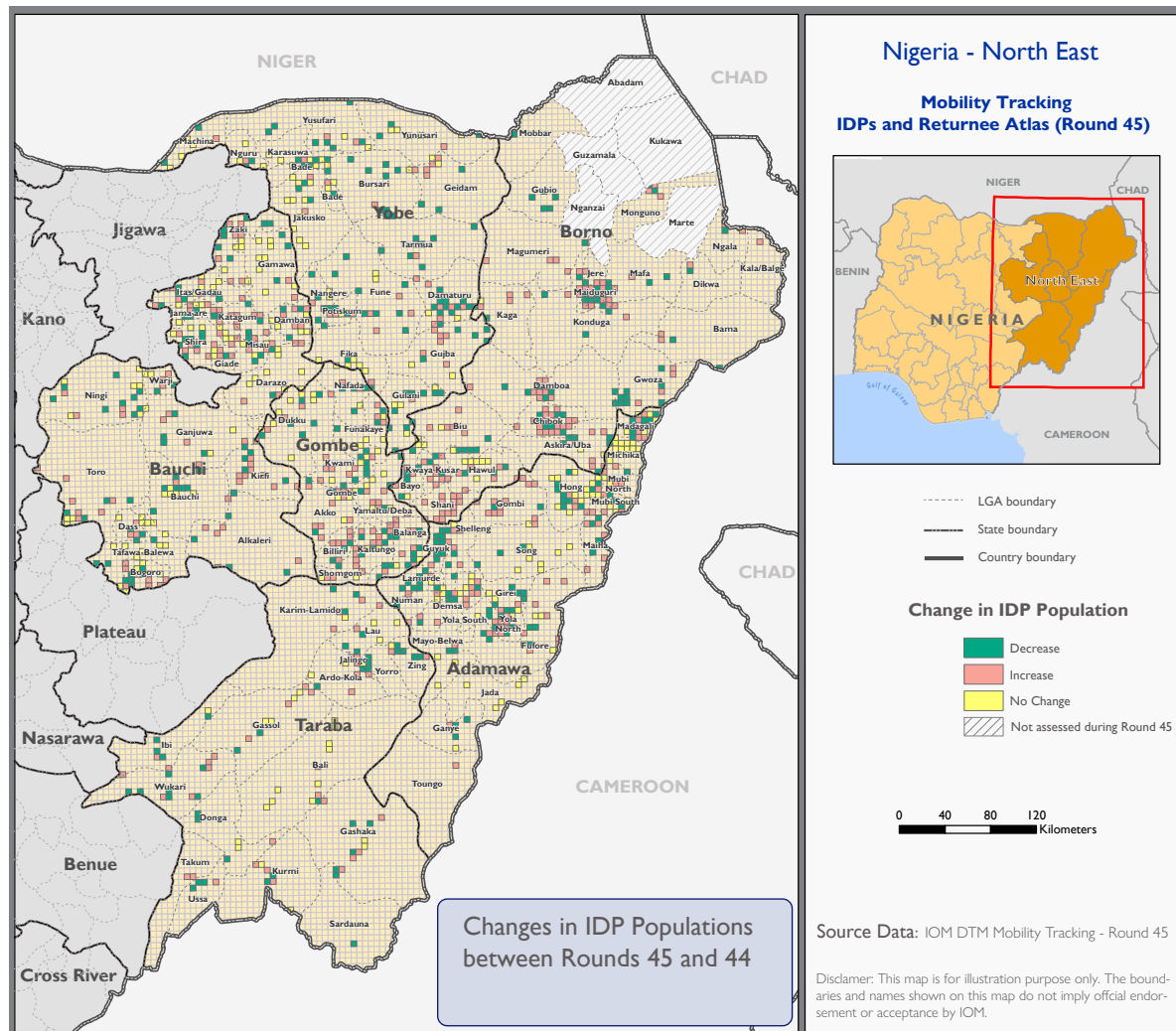
State	LGA	Increase of IDPs
Taraba	Takum	37,355
Borno	Bama	13,913
Borno	Konduga	5,013
Borno	Monguno	2,385
Borno	Damboa	697
Borno	Kaga	621
Taraba	Ardo - Kola	397
Taraba	Ussa	360
Adamawa	Demsa	275
Gombe	Kaltungo	271

* It is to be noted that the decrease of IDPs in the LGA Gubio is due to the fact that some localities in this LGA were not assessed in this round.

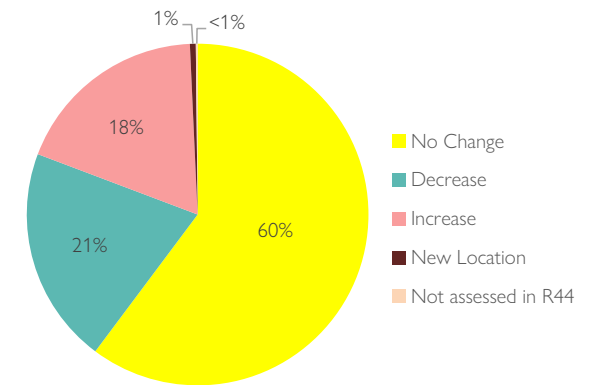


IDP COMPARISON AT LOCATION LEVEL (FEBRUARY - JUNE 2023)

The map below compares IDP population from June 2023 with IDP population from February 2023 at the locality level. In 60 per cent of the locations, no changes in IDP population were recorded, while in 18 per cent of the locations, the number of IDPs increased. Additionally, 16 new IDP locations were identified during the assessment in June 2023.



Percentage of locations and change in IDP numbers



IDP comparison at state level

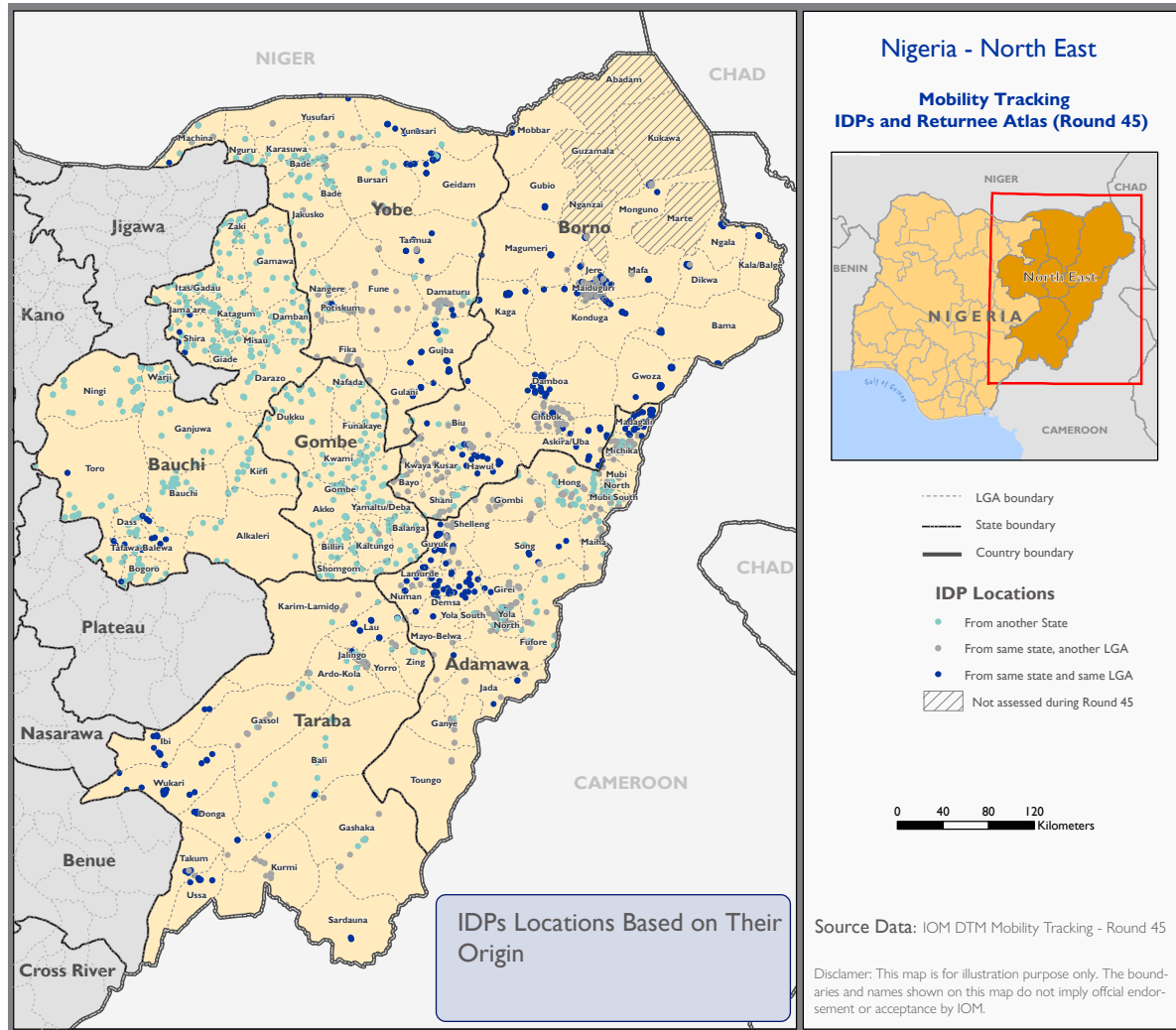
State	February 2023	June 2023	Comparison
Adamawa	223,436	218,555	-2%
Bauchi	68,424	66,310	-3%
Borno	1,804,850	1,697,437	-6%
Gombe	43,342	43,837	1%
Taraba	74,876	111,273	49%
Yobe	173,775	158,122	-9%
Total	2,388,703	2,295,534	-4%

For the convenience of the spatial visualisation, locations are aggregated based on a grid in the map

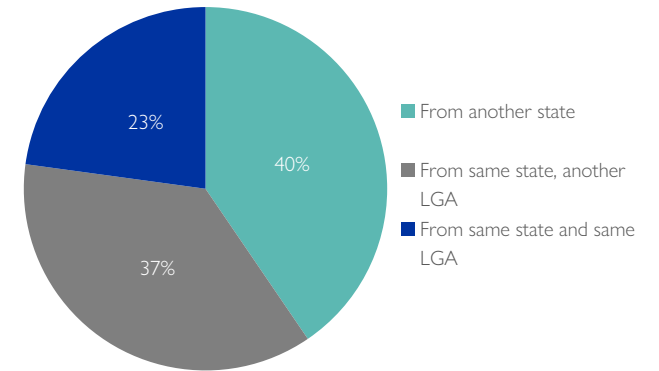


IDPs PER LOCATION OF DISPLACEMENT

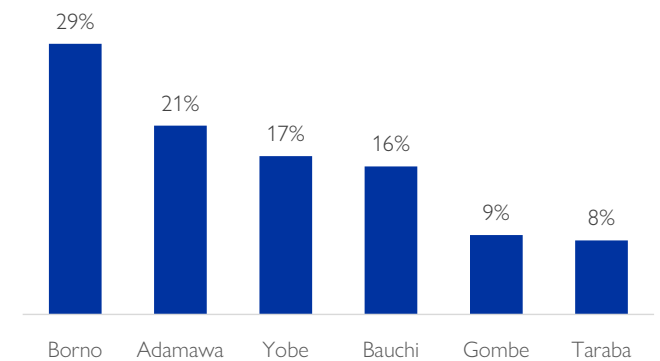
The map below indicates where IDPs are displaced. In 23 per cent of the locations assessed, the majority of the IDPs were displaced within their LGA of origin. In 40 per cent of the locations assessed, the majority of IDPs were displaced from another state and in 37 per cent of the locations assessed, the majority of IDPs were displaced from another LGA, within their state of origin.



Percentage of IDPs per area of displacement



Percentage of IDPs per state of origin

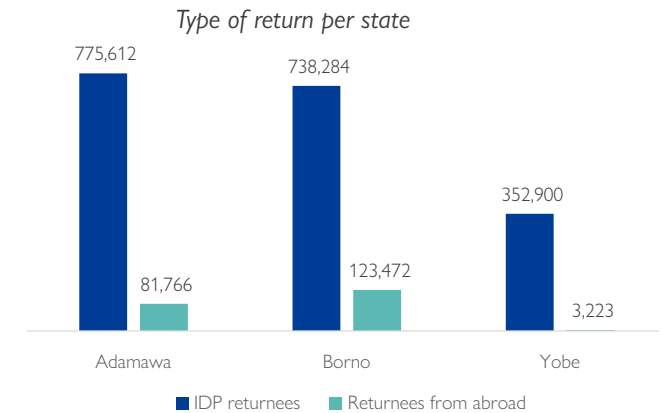
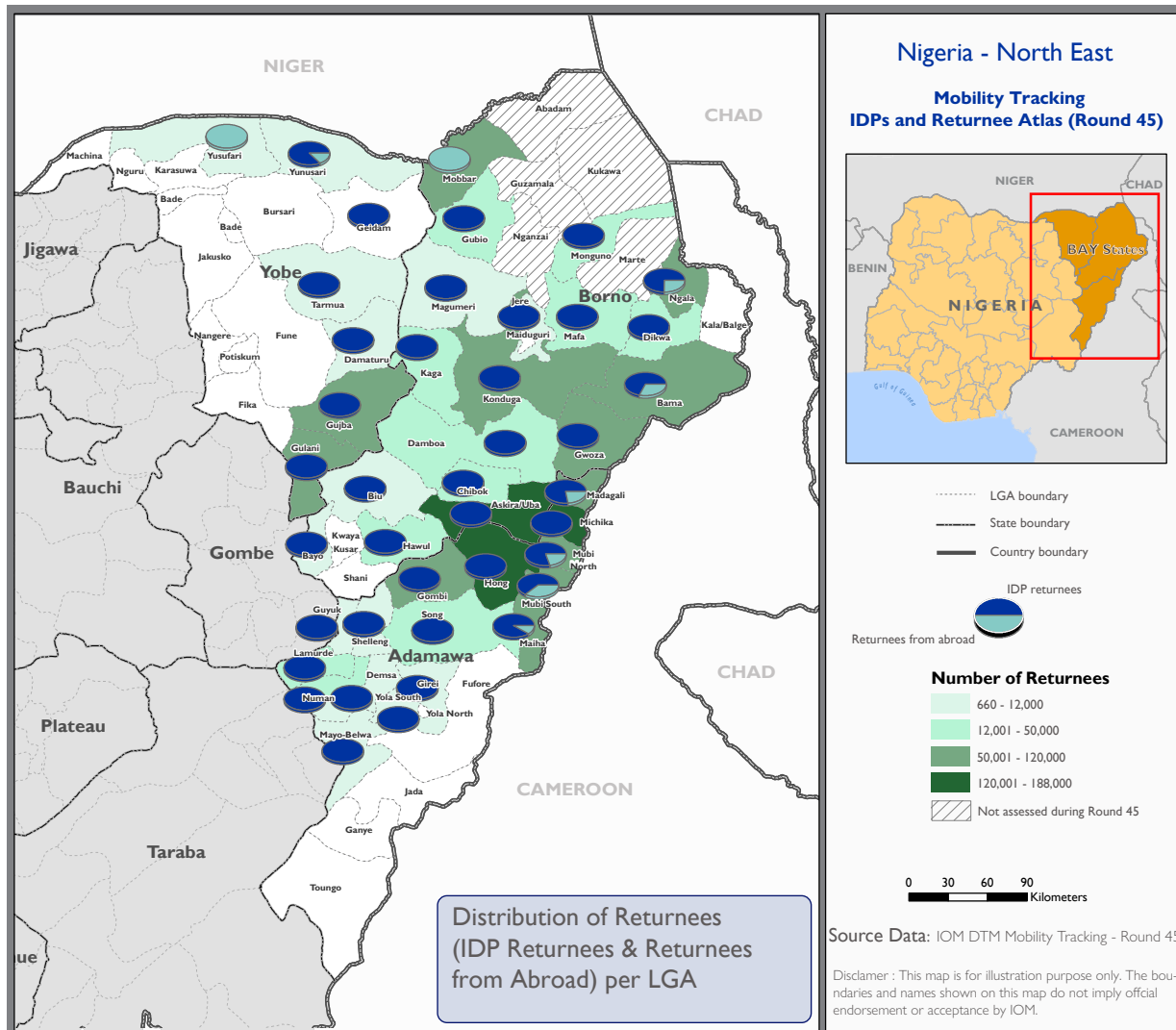


Twenty-nine per cent of the IDPs in north-east Nigeria originate from locations in Borno State.



RETURNEES PER LGA AS OF JUNE 2023

A total of 2,075,257 returnees were identified as of June 2023 in north-east Nigeria. The state of Borno hosted the most significant number of returnees with 861,756 individuals (42% of returnees). Adamawa State hosted 857,378 returnees (41% of returnees) and in Yobe State, 356,123 returnees were recorded (17% of returnees).



The returnee population of north-east Nigeria consisted of 1,866,796 returnees (90%) who returned from locations within Nigeria and 208,461 returnees (10%) who returned from abroad.

Top 10 LGAs hosting the highest number of returnees

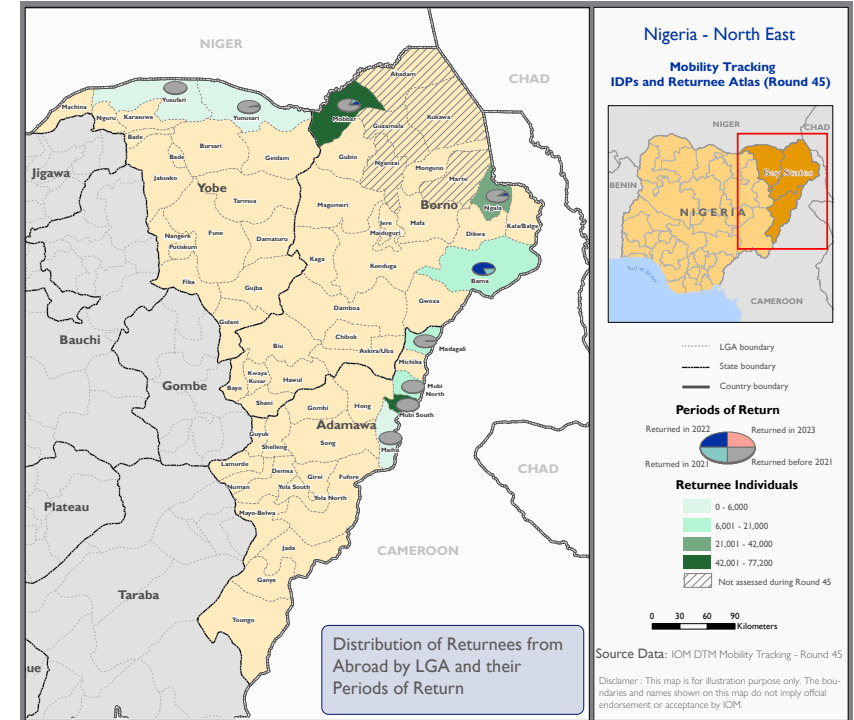
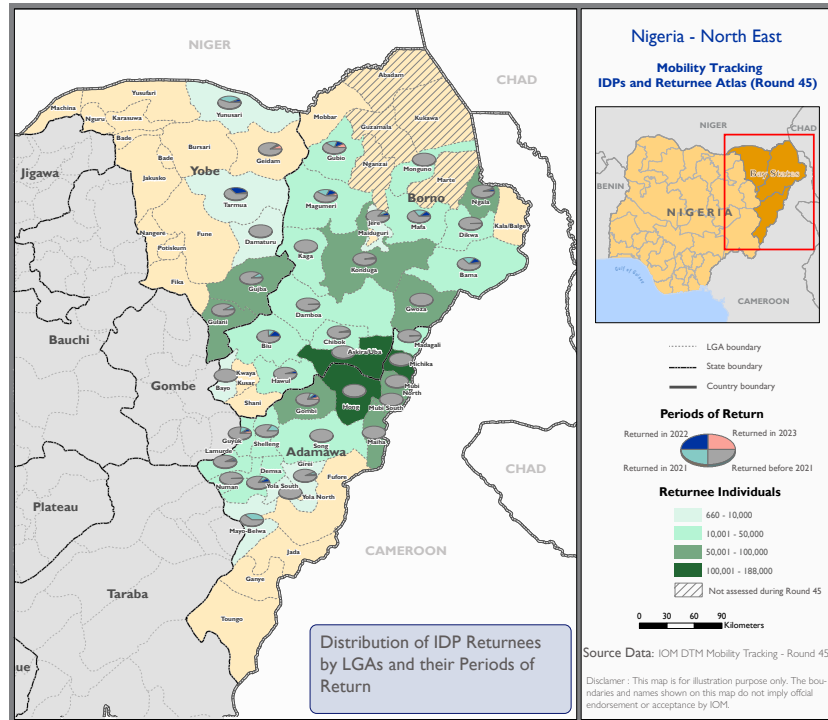
State	LGA	Returnees
Yobe	Geidam	188,240
Adamawa	Hong	165,872
Borno	Askira/Uba	165,728
Adamawa	Michika	150,572
Borno	Ngala	112,377
Adamawa	Mubi South	110,819
Adamawa	Mubi North	102,313
Borno	Gwoza	99,594
Yobe	Gulani	80,789
Borno	Mobbar	77,159



IDP RETURNEES VS. RETURNEES FROM ABROAD

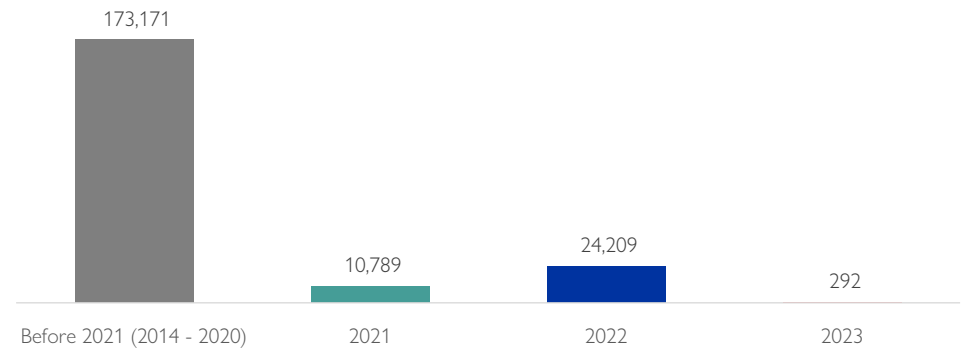
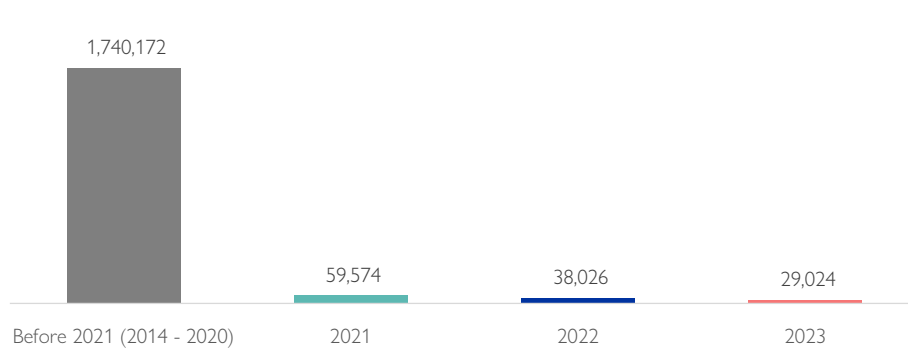
IDP returnees

Returnees from abroad



IDP returnees per periods of return as of June 2023

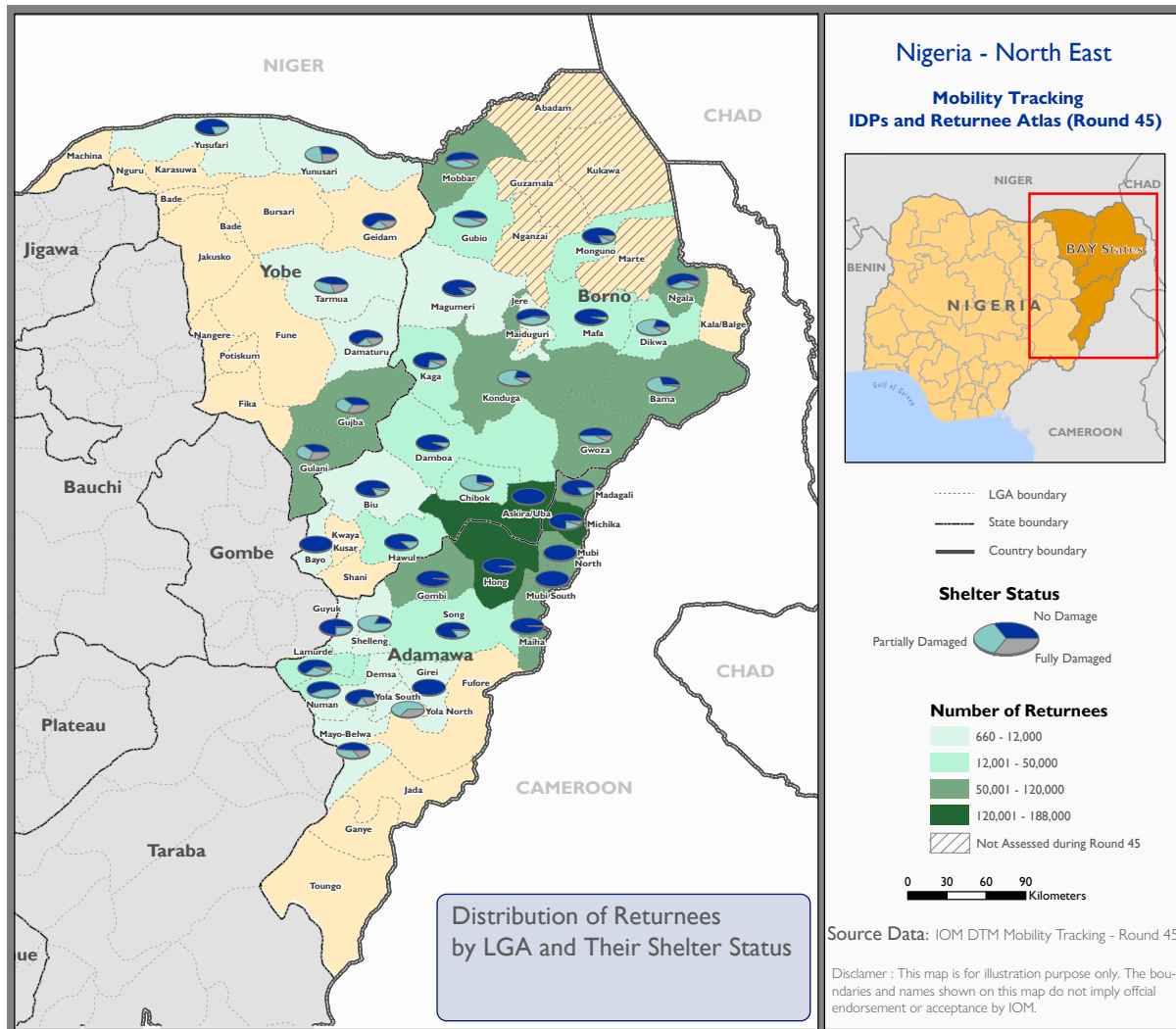
Returnees from abroad per periods of return as of June 2023



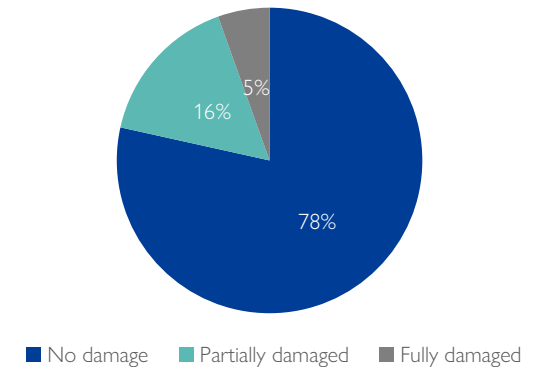


SHELTER STATUS OF RETURNEES

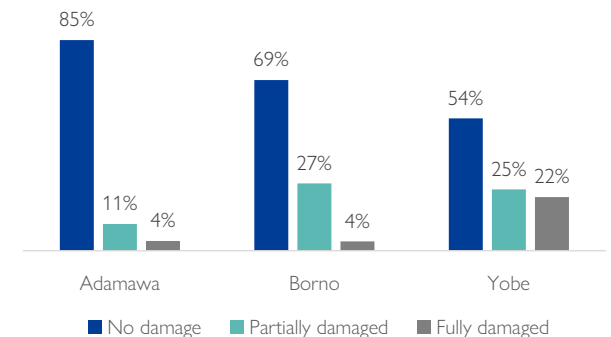
An estimated five per cent of returnees in north-east Nigeria live in fully damaged shelters. An estimated 16 per cent of returnees live in partially damaged shelters and 78 per cent of returnees (an increase of 6% from previous round) live in shelters with no damage. It is to be noted that the percentage of shelters without damage is considerably higher in the state of Adamawa, compared to the states of Borno and Yobe.



Shelter status for returnees



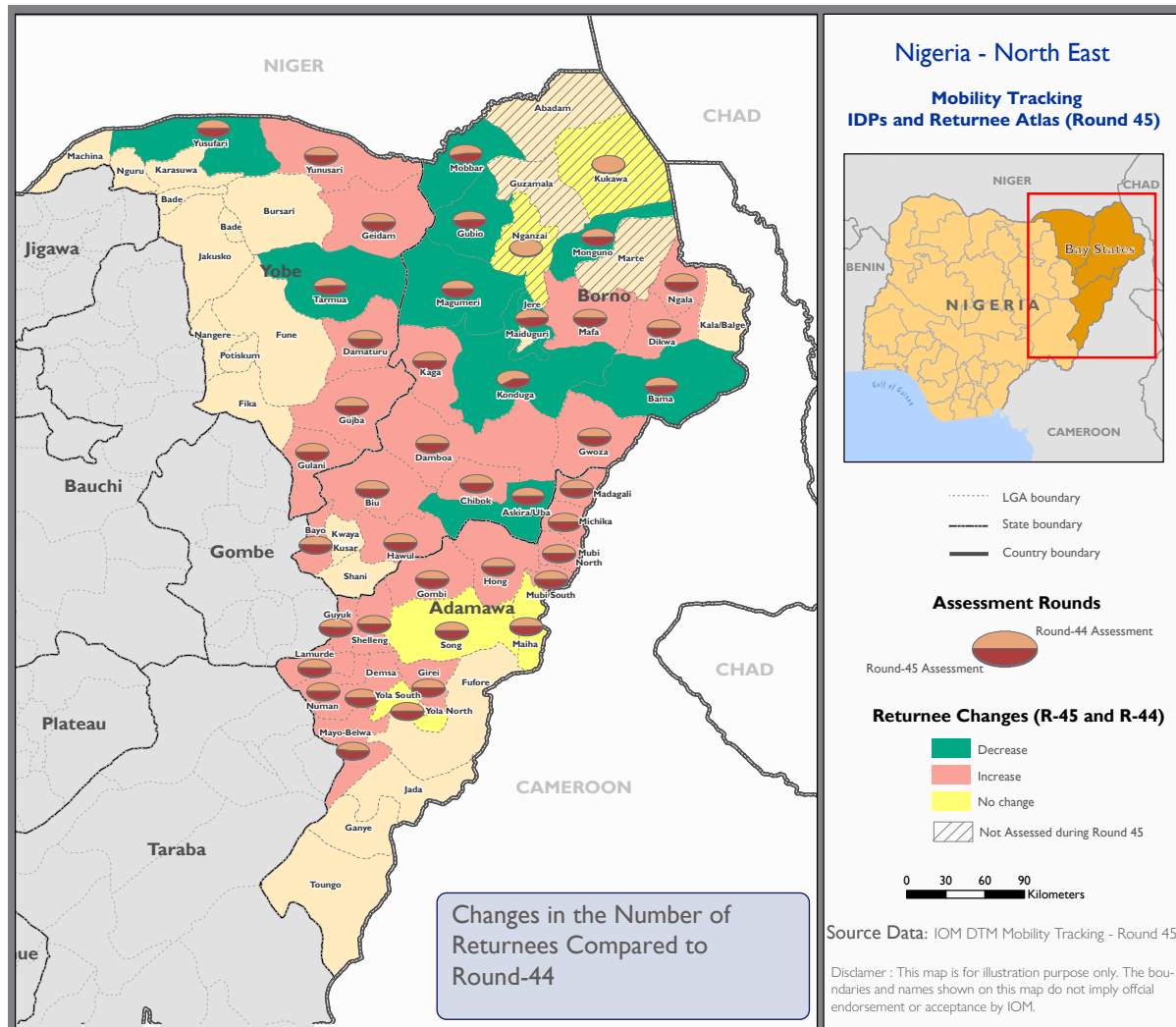
Shelter status for returnees per state





RETURNEE COMPARISON AT LGA LEVEL (FEBRUARY - JUNE 2023)

The map below compares returnee population from February 2023 with returnee population from June 2023 at the LGA level. In the majority of the LGAs, increasing returnee numbers were reported. Ten LGAs (Askira/Uba, Bama, Gubio, Jere, Konduga, Magumeri, Mobbar, Monguno, Tarmua and Yusufari) recorded decreasing returnee population in this round of assessment.



LGAs with the largest increase of returnee individuals

State	LGA	Returnee increase
Adamawa	Gombi	4,109
Borno	Gwoza	2,677
Adamawa	Lamurde	654
Adamawa	Guyuk	546
Borno	Mafa	516
Adamawa	Mubi South	404
Adamawa	Hong	393
Yobe	Gulani	376
Borno	Dikwa	372
Borno	Ngala	344

Returnee comparison at state level

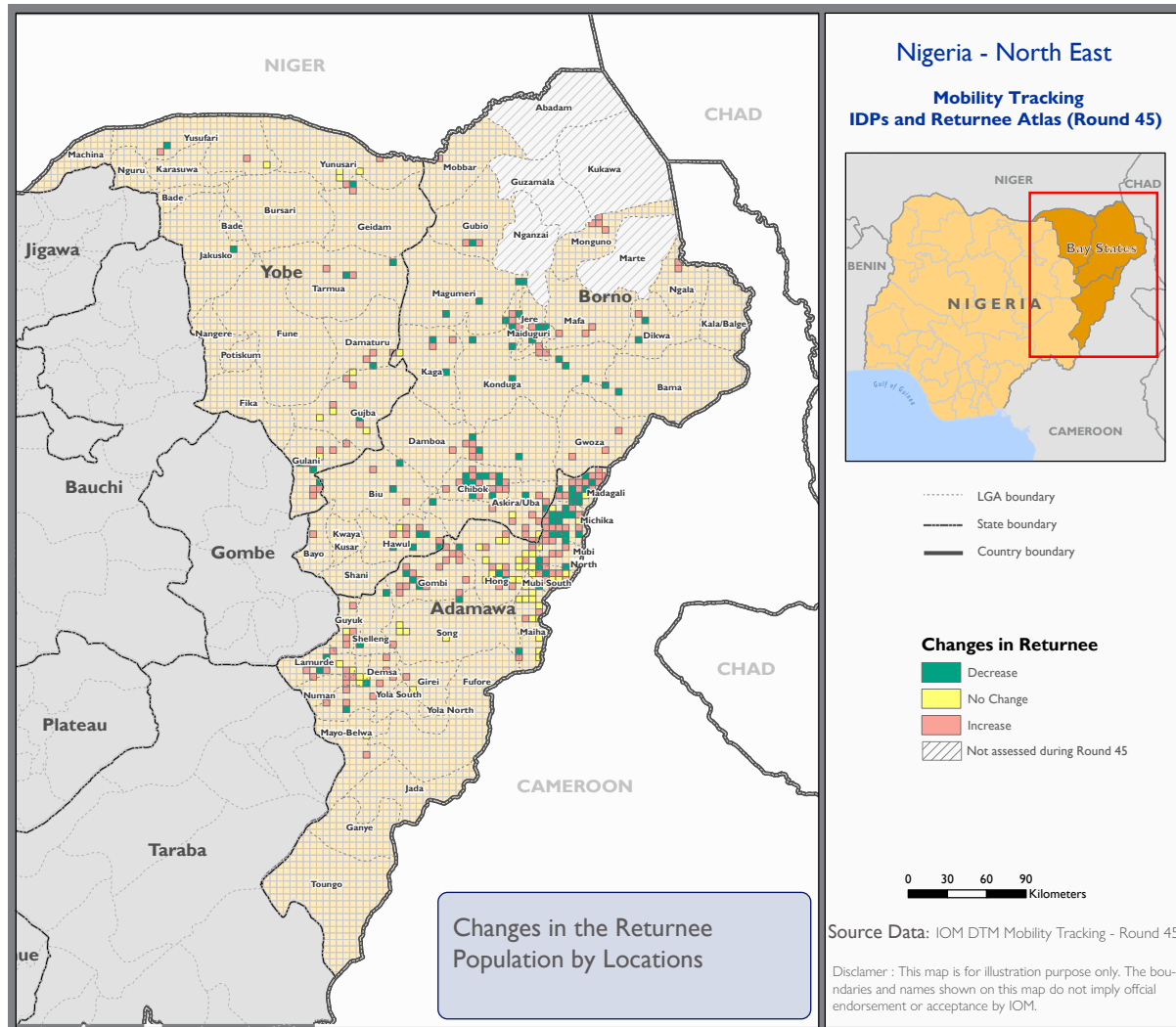
State	February 2023	June 2023	Comparison
Adamawa	850,535	857,378	1%
Borno	904,185	861,756	-5%
Yobe	355,319	356,123	<1%
Total	2,110,039	2,075,257	-2%

* It is to be noted that two LGAs (Kukawa and Nganzai) were not assessed in this round, hence, the returnee population were not ascertained in these LGAs and for this round.

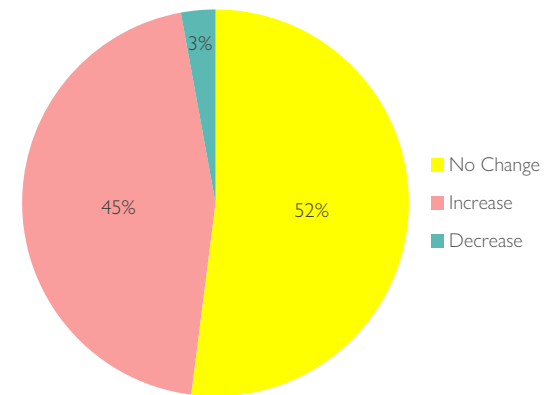


RETURNEE COMPARISON AT LOCATION LEVEL (FEBRUARY - JUNE 2023)

The map below compares returnee population from February 2023 with returnee population from June 2023 at the locality level. In 52 per cent of the return locations, no changes in returnee population was recorded. In 45 per cent of the return locations, the returnee population increased.

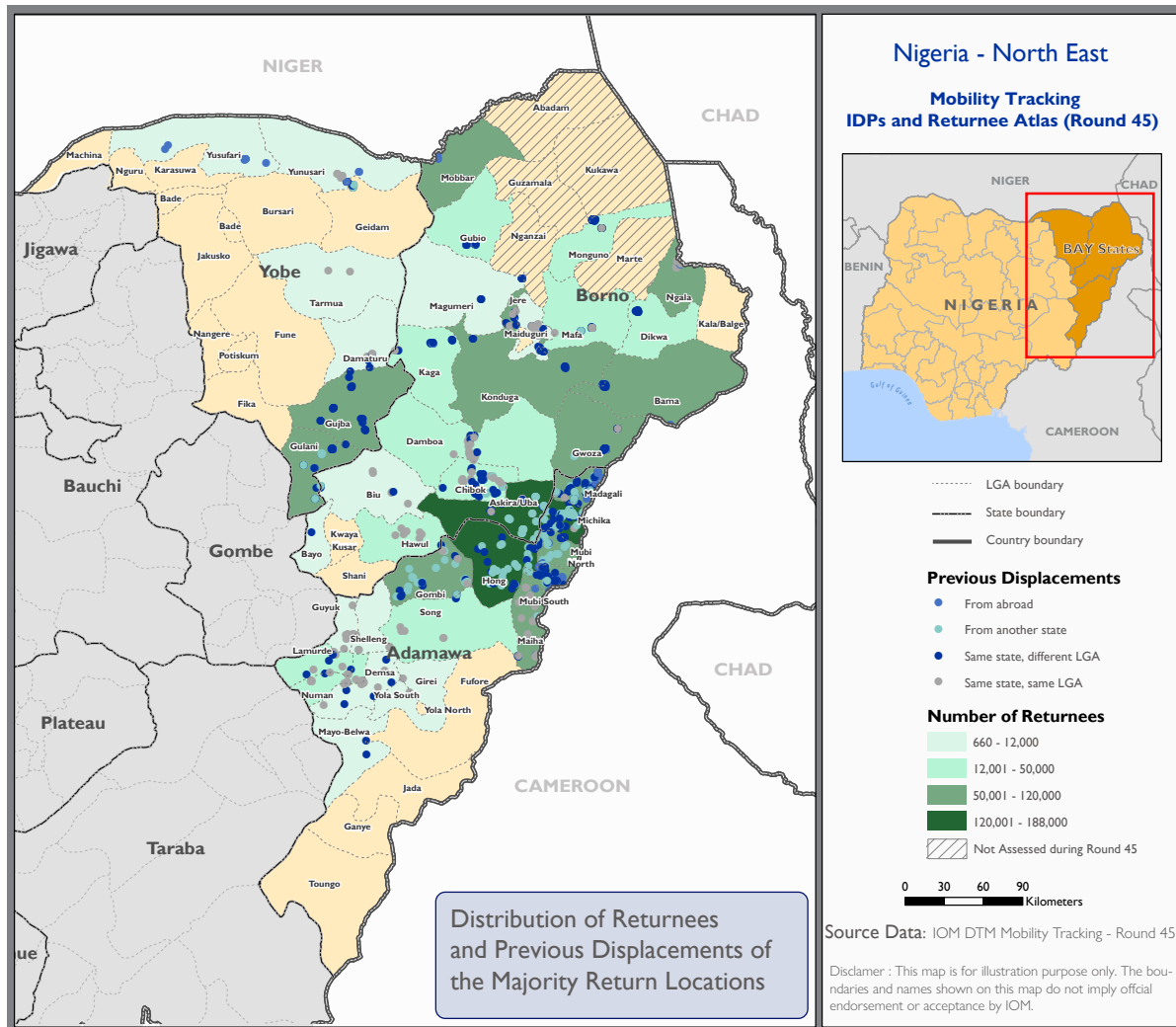


Percentage of locations and change in returnee numbers

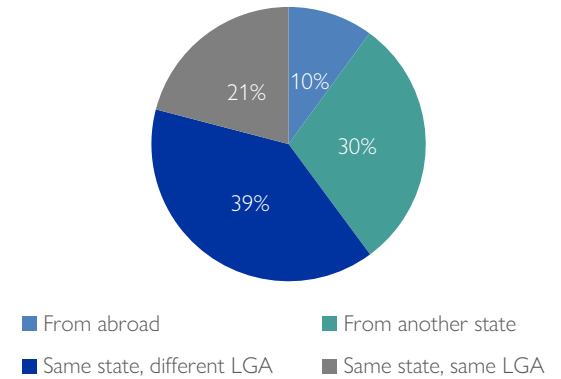


RETURNEES PER LOCATION OF PREVIOUS DISPLACEMENT

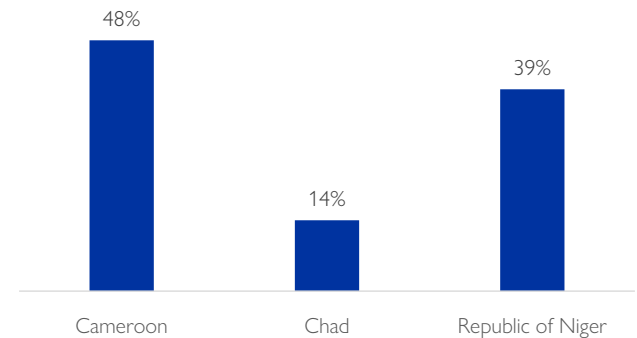
The map below indicates where the majority of returnees in a return location are returning from. In 39 per cent of the return locations, the majority of returnees returned from a different LGA within their state of origin. In 30 per cent of return locations, the majority of returnees returned from another state.



Percentage of returnees per location of displacement

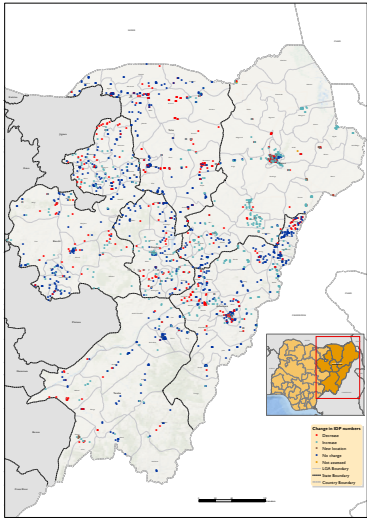


Country of displacement for returnees who returned from abroad (208,461 individuals)

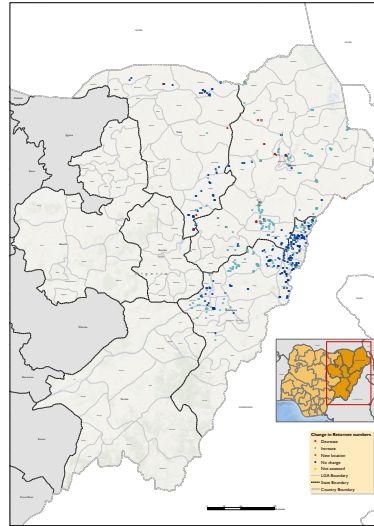


ADDITIONAL MAPS

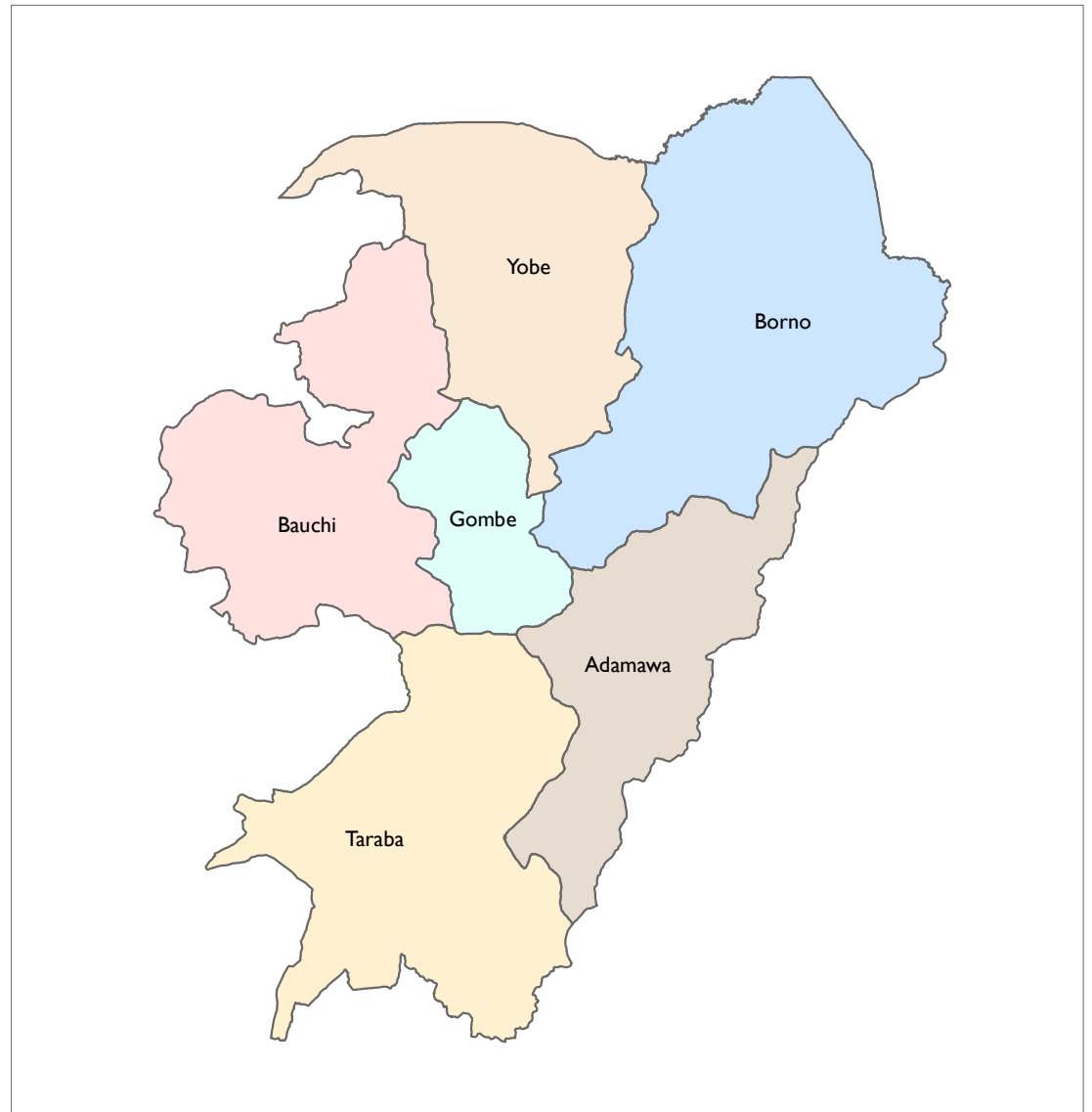
IDP comparison at location level A0



Returnee comparison at location level A0



Click on the state names to access state level maps on IDP and returnee locations



Returnee and IDP locations A0

