

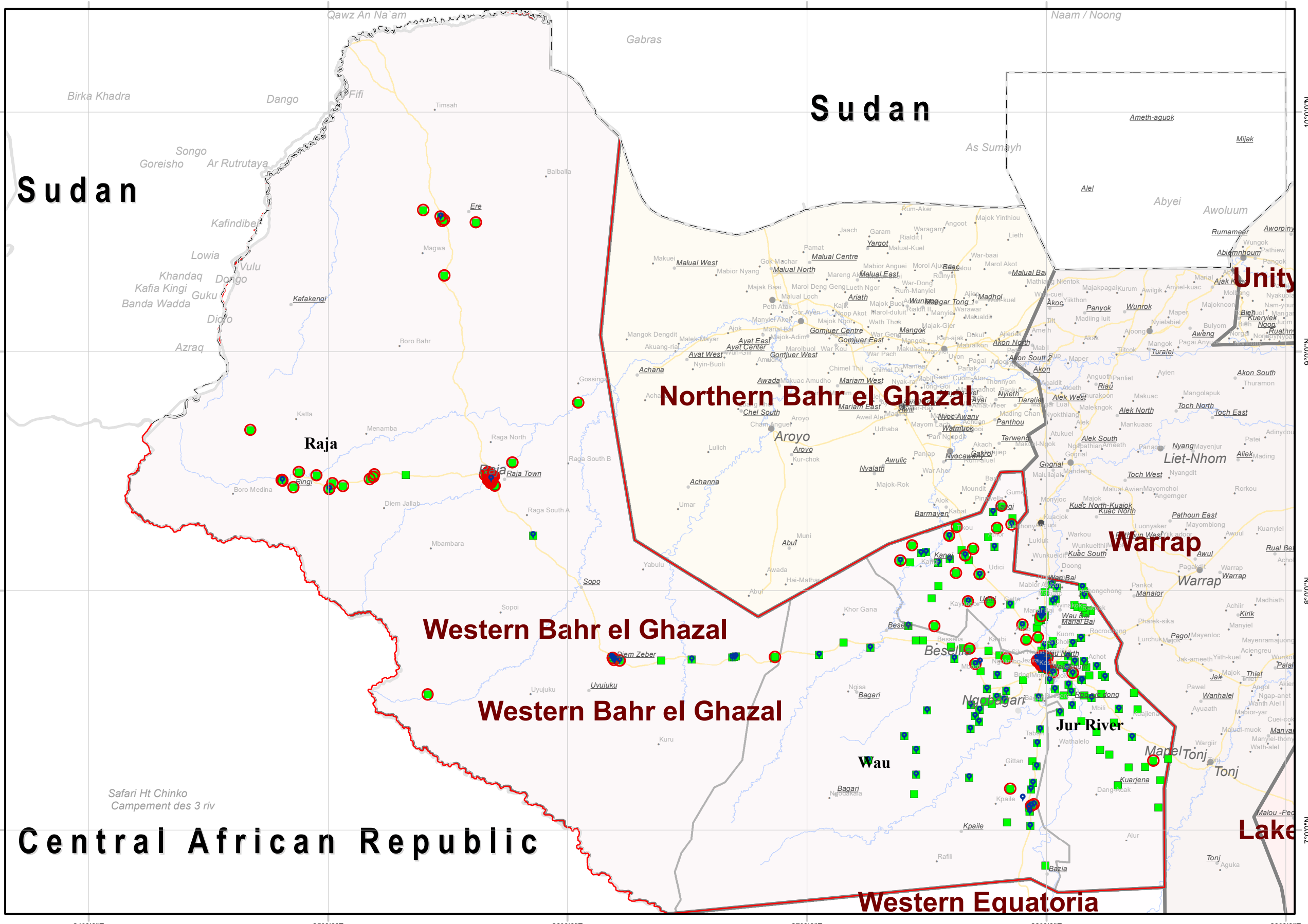
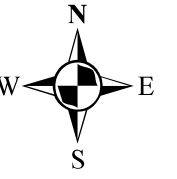


**DTM**  
IOM DISPLACEMENT  
TRACKING MATRIX  
SOUTH SUDAN



# IDPs and Returnees locations in Western Bahr el Ghazal as of April 2023

Displacement Tracking Matrix Mobility Tracking Round 14



## South Sudan Mobility Tracking Round 14, April 2023

- State
- County

- Payam - Sub Area name*
- Village - Location name
- Locations of returnee individuals (previously displaced abroad) present at time of assessment
  - Locations of returnee individuals (previously displaced only in South Sudan) present at time of assessment
  - 📍 Locations of IDP individuals present at time of assessment

- Bordering Country
- Payam - Sub\_area name
- State
- 🌐 National Capital
- Admin1 Capital
- Admin2 Capital
- Primary Town / Large Town
- Roads
- Rivers
- State

Total number of IDPs individuals present at the time of assessment **29,288**

Subset of IDPs individuals present at the time of assessment who were previously displaced abroad **140**

Total number of Returnees individuals present at the time of assessment **281,794**

Subset of Returnees individuals present at the time of assessment who were previously displaced abroad **13,322**

Disclaimer: This map is for illustration purposes only. Names and boundaries on this map do not imply official endorsement or acceptance by IOM.

