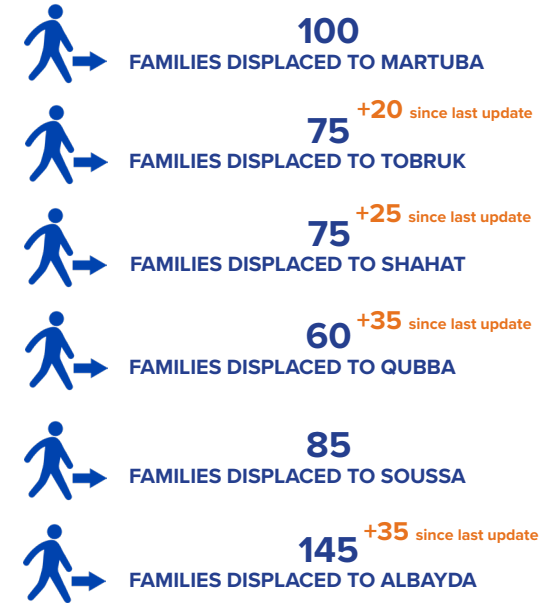
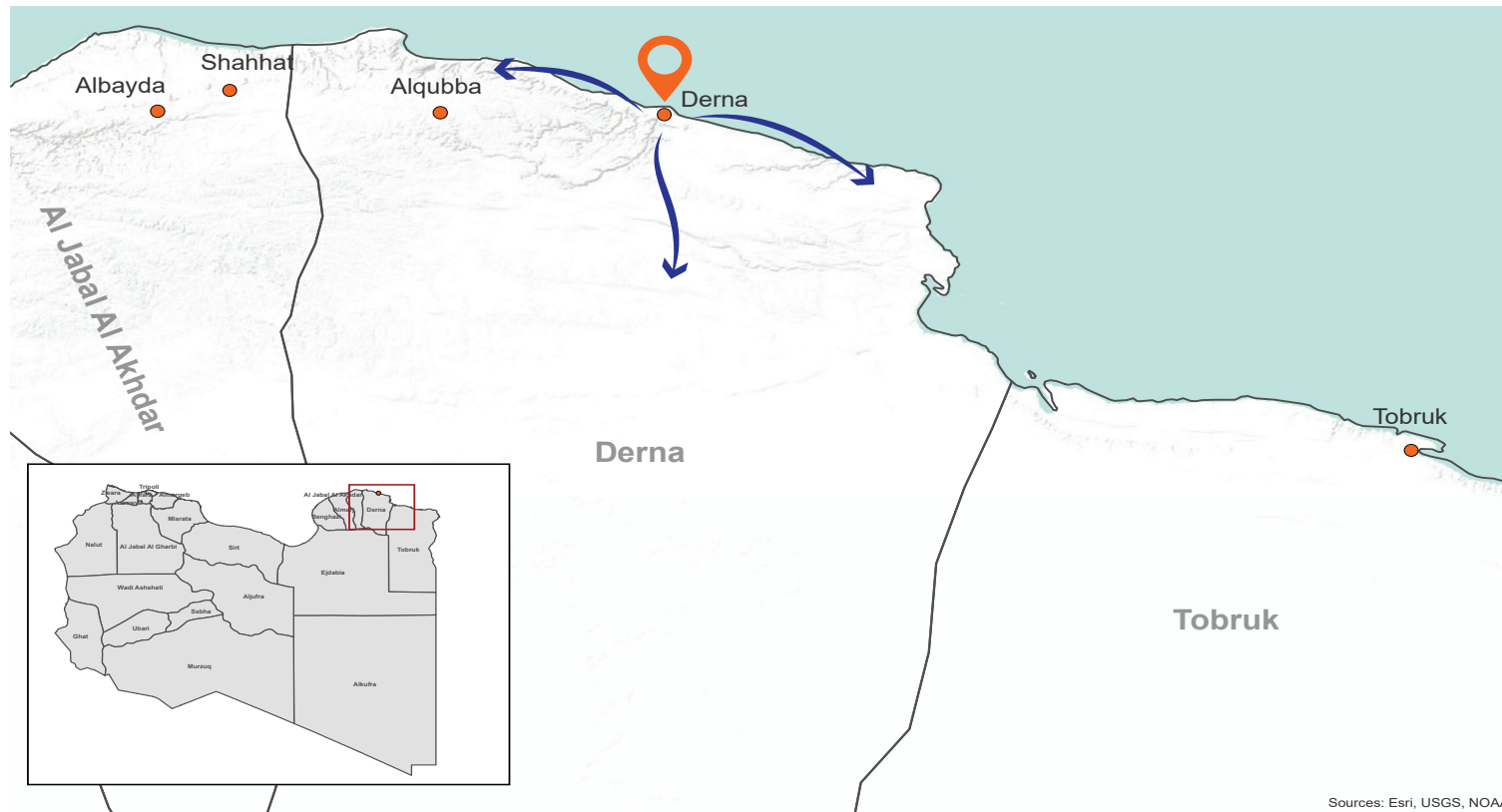


As the security situation in Derna escalated in the second half of May 2018, local population have been displaced to the surrounding areas of Martuba, Shahat, Al Qubba, Soussa, Tobruk and Al Bayda.

Over the past 24 hours, another 115 households (~575 individuals) were reportedly displaced to Tobruk, Shahat, Al Qubba and Al Bayda, bringing the total number of displaced from Derna over the past two weeks to 540 families (~2,700 individuals).

Reported priority needs in Martuba, Soussa and Al Qubba include food, NFIs and basic medical supplies. The humanitarian situation inside Derna remains critical. Population movements between the suburbs and the center of Derna, due to continued shelling, reportedly affected at least 500 families in May.



PRIORITY NEEDS

in Al Qubba, Martuba and Soussa



Sources: Esri, USGS, NOAA