



2,355

Households affected



778

Shelters damaged



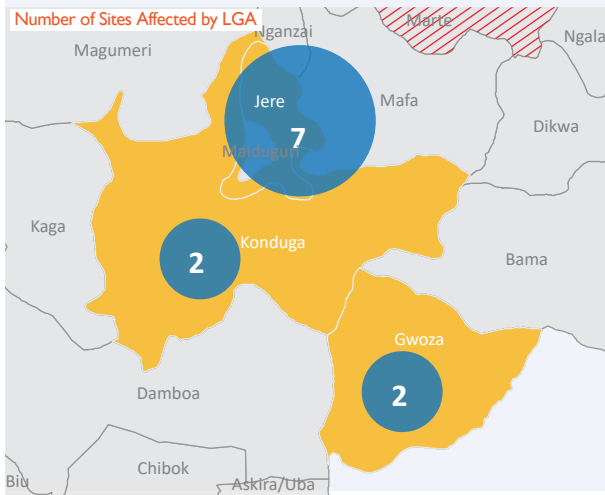
259

Latrines damaged



15

Shower points damaged



With the onset of the rainy season in Borno State, strong winds and sand storms have wreaked varying degrees of damage to infrastructures at displacement sites, including camps and camp-like settings. It has been observed that heavy wind storms which usually precede rain falls in north-east Nigeria frequently cause damage to properties, especially emergency shelters and tents (self-made and constructed) built to support the affected population in north-east Nigeria. DTM's rapid assessments conducted after these heavy storms aim to ascertain the scope of damages and inform a coordinated response.

Following heavy storms on 22 May 2018, IOM carried out an assessment to determine the level of damage inflicted at IDP sites in Gwoza, Jere and Konduga LGAs of Borno State. Assessments indicate that out of the 44 camps assessed, 11 sites sustained severe damages of varying degrees to emergency shelters, latrines and shower points. Lesser impacts of recent storms were observed at 33 IDP sites.

The worst hit of the camps assessed was 'Muna El-Badawe' camp in Jere, which experienced severe damages to 444 shelters, 135 makeshift shelters, 105 latrines and 10 shower point. 579 households (3,184 individuals) in the camp were affected and are currently in need of shelter. Many shelters at the camp were also identified as needing reinforcement to be able to withstand subsequent storms.

Damages at IDP Sites on 22 May 2018

SiteID	Site name	LGA	Number of Damaged Emergency Shelters	Number of Partially Damaged Emergency Shelters	Number of Damaged Makeshift Shelters	Number of Partially Damaged Makeshift Shelters	Number of Damaged Latrines	Number of Partially Damaged Latrines	Number of Damaged Shower Points	Number of Partially Damaged Shower Points	Number of Affected Households	Number of Affected Individuals
BO_S047	MUNA GARAGE EL BADAWE	JERE	444	168	135	70	105	30	10	-	579	3,184
BO_S003	MADINATU CAMP	JERE	33	33	275	74	-	-	-	-	308	1,547
BO_S068	FARIA GIDAN BLOCK CAMP	JERE	18	16	146	112	20	15	5	-	164	922
BO_S072	KORSO BASHIR CAMP	JERE	-	-	21	16	1	-	-	-	21	114
BO_S076	SHUWARI CAMP	JERE	-	-	40	13	-	-	-	-	40	192
BO_S113	EL-MISKIN CENTER	JERE	26	24	37	13	-	-	-	-	63	318
BO_S270	ANNUR CAMP	JERE	-	-	11	11	-	-	-	-	11	56
TOTAL JERE			521	241	665	309	126	45	15	-	1,186	6,333
BO_S016	FEDERAL TRAINING CENTER CAMP	KONDUKA	54	11	1	-	46	-	-	-	53	339
BO_S021	250 HOUSING ESTATE	KONDUKA	112	23	1	-	87	18	-	-	199	709
TOTAL KONDUKA			166	34	2	-	133	18	-	-	252	1,048
BO_S207	UMBAAH ROCK SIDE CAMP	GWOZA	50	425	-	-	-	-	-	-	475	2,612
BO_S224	CAMP 2 (WEGE)	GWOZA	41	401	-	-	-	-	-	-	442	2,431
TOTAL GWOZA			91	826	-	-	-	-	-	-	917	5,043
TOTAL DAMAGE			778	1,101	667	309	259	63	15	-	2,355	12,424

The depiction and use of boundaries, geographic names, and related data shown on maps and included in this report are not warranted to be error free nor do they imply judgment on the legal status of any territory, or any endorsement or acceptance of such boundaries by IOM.

For more information or to report an alert, please contact:

Henry Kwenin, DTM Project Coordinator: hkwenin@iom.int | +234 9038852524

Fouad Diab, Emergency Coordinator: fdiab@iom.int | +234 9075070001

DTM information products: <http://nigeria.iom.int/dtm>



USAID
FROM THE AMERICAN PEOPLE



Humanitarian Aid
And Civil Protection

