



IDPs in Elmahan site, Dawa zone, Somali region, Ethiopia © IOM 2023

## ETHIOPIA NATIONAL DISPLACEMENT REPORT 16

SITE ASSESSMENT ROUND 33 AND VILLAGE ASSESSMENT SURVEY ROUND 16  
NOVEMBER 2022 - JUNE 2023

IN COOPERATION WITH:



THE DTM PROGRAMME IS  
SUPPORTED BY:



**USAID**  
FROM THE AMERICAN PEOPLE



From  
the People of Japan



Humanitarian Aid  
and Civil Protection

**Canada**

**EHF** Ethiopia  
Humanitarian  
Fund

## **ADDRESS**

International Organization for Migration (IOM)  
Special Liaison Office (SLO) Ethiopia  
Kirkos Sub City, Woreda 8  
YeMez Building (Behind Zequala Building)  
P.O.Box 25283 Code 1000  
Addis Ababa, Ethiopia.  
Tel.: +251 1155 71 707  
Website: <http://www.ethiopia.iom.int>

For more information, kindly contact DTM Ethiopia at [dtmethiopia@iom.int](mailto:dtmethiopia@iom.int).

## **DISCLAIMER**

The opinions expressed in the report are those of the authors and do not necessarily reflect the views of the International Organization for Migration (IOM). The designations employed and the presentation of material throughout the report do not imply the expression of any opinion whatsoever on the part of IOM concerning the legal status of any country, territory, city or area, or of its authorities, or concerning its frontiers or boundaries.

IOM is committed to the principle that humane and orderly migration benefits migrants and society. As an intergovernmental organization, IOM acts with its partners in the international community to: assist in the meeting of operational challenges of migration; advance understanding of migration issues; encourage social and economic development through migration; and uphold the human dignity and well-being of migrants.

## **COPYRIGHT**

"International Organization for Migration (IOM), August 2023. DTM Ethiopia - Ethiopia National Displacement Report 16 (November 2022 - June 2023). IOM, Ethiopia." For more information on terms and conditions of DTM reports and information products, please refer to: <https://www.iom.int/terms-and-conditions>

# CONTENTS

<b>INTRODUCTION</b>	<b><u>4</u></b>
<b>1. SECTION 1: SITE ASSESSMENT (SA)</b>	<b><u>7</u></b>
1.1 METHODOLOGY: SITE ASSESSMENT	<u>8</u>
1.2 KEY FINDINGS: SITE ASSESSMENT	<u>9</u>
1.3 OVERVIEW OF DISPLACEMENT	<u>10</u>
<b>2. SECTION 2: VILLAGE ASSESSMENT SURVEY (VAS)</b>	<b><u>11</u></b>
2.1 METHODOLOGY: VILLAGE ASSESSMENT SURVEY	<u>12</u>
2.2 KEY FINDINGS: VILLAGE ASSESSMENT SURVEY	<u>13</u>
2.3 OVERVIEW OF RETURN	<u>14</u>
<b>3. ANNEXES</b>	<b><u>15</u></b>
3.1 SUMMARY TABLES OF DISPLACEMENT	<u>15</u>
3.2 SUMMARY TABLES OF RETURN	<u>30</u>

# INTRODUCTION

## BACKGROUND: POPULATION MOBILITY AND INTERNAL DISPLACEMENT IN ETHIOPIA

Ethiopia faces significant internal displacement. In 2021, Ethiopia recorded "the highest annual displacement figure ever recorded for a single country".<sup>1</sup> A significant portion of these displacements is conflict-induced, largely related to ethnic and border-based disputes. Old tensions such as the contestation of the Oromia-Somali regional border which first flared up in 2017 continue to persist, while new conflicts have also emerged. Conflict broke out in 2016 over the administrative designation of then Konso woreda in SNNP region; in 2018 Konso was formally recognized as a zone, but in the years since conflict has only continued. In April and later in June 2018, conflict which was aggravated by competition for land and resources broke out between Gedeo and Guji Oromo tribes in West Guji. It is estimated that by August 2018, 748,499 Internally Displaced Persons (IDPs) were displaced from the Gedeo-West Guji conflict alone.<sup>2</sup> In September 2020, frequent attacks from unidentified armed groups (UAGs) on the border of Benishangul Gumz region led to increasing displacement to Awi zone in Amhara region. This continued to intensify and in January 2021 displacement reached a peak of 76,000.<sup>3</sup>

In early November 2020, the regional party of Tigray allegedly attacked the Northern Command of Ethiopia's National Defense Force in Mekelle, Tigray region, prompting a military offensive from the federal government of Ethiopia. Following this, conflict broke out in the North of Ethiopia resulting in significant displacement. After a change of administration in Tigray region at the end of

June 2021, the conflict moved further south into Afar and Amhara regions but began to subside around January 2022. In August 2022, the conflict resumed for a period though remained largely contained in Tigray region. On 2 November 2022, the regional party of Tigray and the Government of Ethiopia signed an agreement on a permanent cessation of hostilities.<sup>4</sup> As of June 2023, Tigray hosted the highest number of IDPs primarily displaced by conflict nationwide (1,011,636 individuals or 34.73% of national conflict caseload).

In mid-April 2021, conflict broke out in Ataye City Administration in North Shewa zone of Amhara region and the surrounding areas, which led to mass displacement in the zone. Estimated displacement following the conflict, according to government sources, reached 310,000 IDPs at its peak.

Climate-induced displacement has become increasingly prominent in Ethiopia. Beginning in 2015, Ethiopia faced one of the strongest onsets of El Niño, a periodic heating of the eastern tropical Pacific, which reduced the kiremt rainfall<sup>5</sup> and successively resulted in drought in the Southern and Southeastern parts of the country.<sup>6</sup> Recent recurrent droughts have mostly affected Oromia and Somali regions, particularly the zones of Dawa, Liban, Afder, and some parts of Shabelle in the Somali region, as well as the Borena zone in the Oromia region. Acute food insecurity levels are increasing throughout the affected regions.<sup>7</sup>

1. Internal Displacement Monitoring Centre, 2022. Global Report on Internal Displacement (GRID) 2022 Report. Available at: <https://www.internal-displacement.org/publications/2022-global-report-on-internal-displacement>

2. Displacement Tracking Matrix (DTM), 2018. Ethiopia — Gedeo/West Guji Rapid Response Assessment Round 2 (11 — 23 August 2018)— Host Community Dataset. Available at: <https://dtm.iom.int/datasets/ethiopia---gedeowest-guji-rapid-response---host-community-dataset---site-assessment---round>

3. Displacement Tracking Matrix (DTM), 2021. Ethiopia — National Displacement Report 8 (March - April 2021). Available at: <https://dtm.iom.int/reports/ethiopia---national-displacement-report-8-march---april-2021?close=true>

4. Reuters, 2022. Factbox: Key points in Ethiopia's ceasefire agreement. Available at: <https://www.reuters.com/world/africa/key-points-ethiopia-ceasefire-agreement-2022-11-04/>.

5. Kiremt rain is the summer rain that normally lasts between June to September. This rain is crucial for the main meher harvest. Conversely, the belg rain is the spring rain that usually spans between March to August.

6. USAID, 2016. El Niño in Ethiopia 2015 – 2016: A Real-Time Review Of Impacts And Responses. Available at: <https://www.agri-learning-ethiopia.org/wp-content/uploads/2016/06/AKLDP-El-Nino-Review-March-2016.pdf>

As of June 2023, drought was the primary cause of displacement for 810,855 IDPs (18.49% of the national IDP caseload), with IDPs reporting this reason concentrated in Somali, Oromia and Afar regions.

In addition, in both Round 32 (November 2022 - January 2023) and Round 33 (April 2023 - June 2023), other climate-induced changes impacted the rate of displacement throughout the country, predominately because of flooding, thereby highlighting the continuing effects of displacement on populations whose livelihoods are largely climate-dependent. Ethiopia continues to cope with the lasting impact of the damage to crops caused by

the overflowing of the Shabelle, Ganale, and Dawa rivers in 2020. Flooding and landslide incidents in six regions affected nearly 1.1m people according to the Ethiopia Disaster Risk Management Commission (EDRMC).<sup>8</sup> As of March 2023, drought-affected areas in Oromia and Somali regions witnessed flash floods causing temporary displacement, and an increase in cholera cases was registered.<sup>9</sup>

Adding to the high mobility landscape of Ethiopia is the number and rate of returns. High returns have been seen in Amhara, Tigray and Afar regions, following the cessation of hostilities of the Northern Ethiopia crisis.

## IOM POPULATION OBSERVATION IN ETHIOPIA

In order to capture population mobility and internal displacement in Ethiopia, the International Organization for Migration (IOM)'s Displacement Tracking Matrix (DTM) methodology is deployed to track IDPs, returning IDPs, migrants and returned migrants. IOM entered into partnership with the Ethiopia Disaster Risk Management Commission (EDRMC) in August 2016, and has been regularly implementing DTM assessments in Ethiopia since September 2016.

DTM tools active in Ethiopia include a Site Assessment (SA) which focuses on tracking internal displacement and a Village Assessment Survey (VAS) aimed at tracking returns. SA covers areas where there are reports of 20 or more IDP households, whereas VAS covers areas where there are reportedly 20 or more returning IDP households that returned on or after 1 January 2021.



Amhara region, Ethiopia © IOM 2022

7. FEWS, October 2022 - May 2023. Food Security Outlook. Available at: <https://fews.net/east-africa/ethiopia/food-security-outlook/october-2022>

8. UNFPA, 2022. UNFPA Ethiopia Humanitarian Response Situation Report - July 2022. Available at: <https://reliefweb.int/report/ethiopia/unfpa-ethiopia-humanitarian-response-situation-report-july-2022>

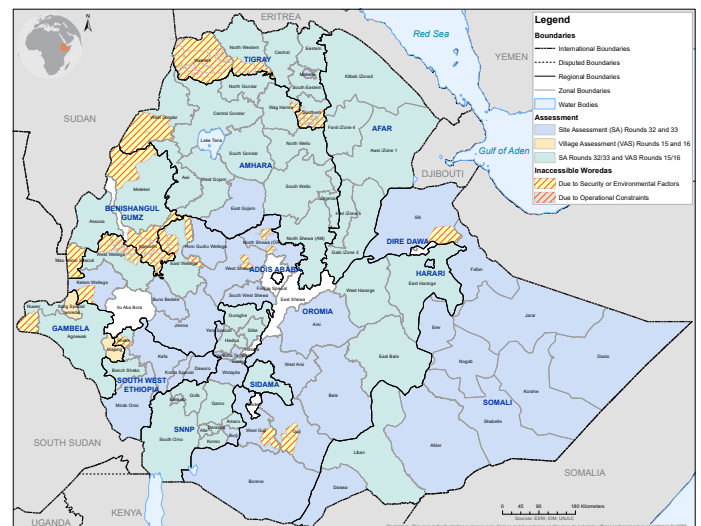
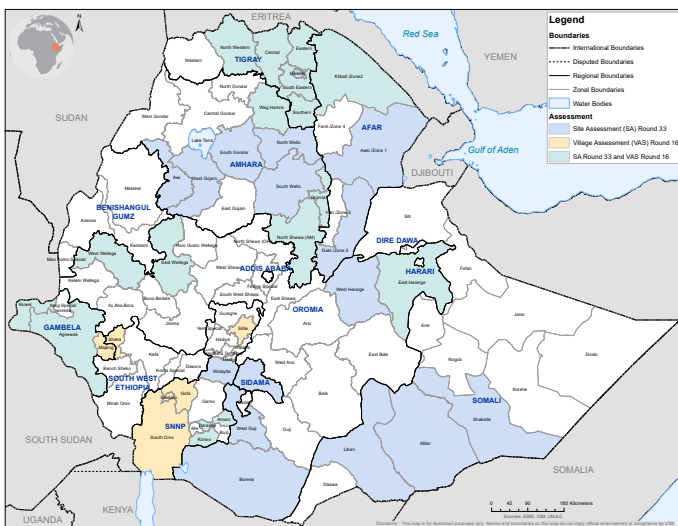
9. UNFPA, 2022. UNFPA Ethiopia Humanitarian Response Situation Report - March 2023. Available at: <https://reliefweb.int/report/ethiopia/unfpa-ethiopia-humanitarian-response-situation-report-march-2023>

Between April and June 2023, IOM DTM deployed the SA Round 33 and VAS Round 16, carrying out a full multisectoral location assessment in Tigray region, and a figure update in high mobility sites and villages across the rest of the country, as seen in Figure 1.

The November 2022 - January 2023 data (Round 32 for SA and Round 15 for VAS) was compiled with the April - June 2023 data (Round 33 for SA and Round 16 for VAS) to consolidate national IDP and returning IDP figures updated to June 2023. The locations assessed during both rounds of data collection are not duplicated in the consolidated figures. The coverage of the consolidated figures for SA and VAS can be seen in Figure 2.

**FIGURE 1. COVERAGE OF SITE ASSESSMENT (SA) ROUND 33 AND VILLAGE ASSESSMENT SURVEY (VAS) ROUND 16 FIGURE UPDATES AND MULTISECTORAL LOCATION ASSESSMENT IN TIGRAY REGION (APRIL - JUNE 2023)**

**FIGURE 2. COVERAGE OF CONSOLIDATED SITE ASSESSMENT (SA) ROUNDS 32 AND 33 AND CONSOLIDATED VILLAGE ASSESSMENT SURVEY (VAS) ROUNDS 15 AND 16 (NOVEMBER 2022 - JUNE 2023)**



The areas in blue represent areas that were exclusively covered by SA, while the areas in yellow represent areas that were only covered by VAS. The areas in green represent areas where both SA and VAS were deployed. The grey areas covered in red stripes represent areas that were inaccessible due to operational constraints, while the yellow with red stripes represents areas inaccessible due to security and environmental factors.

# SECTION I: SITE ASSESSMENT (SA)

---

## TRACKING INTERNAL DISPLACEMENT IN ETHIOPIA



## 1.1 METHODOLOGY: SITE ASSESSMENT (SA)

IOM Ethiopia employs a series of tools in its DTM. The present methodology section refers to the Site Assessment (SA) tool which falls under the Mobility Tracking (MT) component of the DTM. Since September 2016, IOM Ethiopia has conducted 33 rounds of data collection. The DTM programme is implemented in collaboration with the Ethiopia Disaster Risk Management Commission (EDRMC) and lower admin level counterparts. The data collection methodology is divided into three administrative levels:

**Zone level:** Data is collected through interviews with key informants from the Disaster Risk Management Office (DRMO), community representatives, and the education and health offices. This data includes the estimated number of displaced individuals, a list of woredas within the zone that host IDPs, their reasons for displacement, time of arrival and locations.

**Woreda level:** Information is collected through key informants at woreda level and includes number of displaced households and individuals at woreda and kebele level, site typology and approximate locations of identifiable displacement sites, among other indicators. The information is used to plan the roll out of the SA.

**Site level:** SA is conducted in locations hosting a reported 20 or more IDP households defined through previous rounds of data collection and the above mentioned interviews at the higher administrative levels. Sites with fewer than 20 IDP households are not assessed. Information is collected through group discussions with key informants (IDP representatives, including men, woman, elderly and youth), key informant interviews and direct observation. SA gathers information on IDPs, including on their locations, their areas of origin, reasons for displacement, household demographics and the availability of services in their areas of displacement.

Demographic information was collected through representative sampling at the site level at a 95% confidence interval and a 10% margin of error. Overall, 171,322 households were interviewed nationwide to inform the demographic information, length of displacement and reasons for displacement. In Mekelle zone and Shire woreda in North Western zone in Tigray region, demographic information was collected through key informants due to operational constraints.

Between April and June 2023, IOM DTM deployed the SA Round 33 in 924 high mobility sites across Tigray, Afar, Amhara, Oromia, Sidama, SNNP and Somali regions. In Tigray region, the SA was deployed in 643 accessible sites, 640 of which were opened before 2023 and 3 had reopened. Out of the 88 woredas in Tigray, 20 woredas were inaccessible. Therefore, the IDP regional and national figures should likely be higher.

In Afar, Amhara, Oromia, Sidama, SNNP and Somali regions, SA Round 33 (figure update) was deployed in 281 sites, 254 of which were new and had not been assessed previously, 23 had reopened and 4 were opened before 2023.

The SA Round 32 (November 2022 - January 2023) data was compiled with the SA Round 33 (April - June 2023) data to consolidate a national IDP figure updated to June 2023 for 3,393 sites. The sites assessed during both Round 32 and Round 33 are not duplicated in the consolidated figure.

**FIGURE 3. NUMBER OF ASSESSED SITES INCLUDED IN UPDATED IDP FIGURE (NOVEMBER 2022 - JUNE 2023), BY REGION AND ROUND OF DATA COLLECTION**

Regions	Sites assessed in Round 32 included in updated figure	Sites assessed in Round 33 included in updated figure	Total sites included in updated figure
Afar	67	8	75
Amhara	622	104	726
Benishangul Gumz	82	0	82
Dire Dawa	0	0	0
Gambela	17	0	17
Harari	9	0	9
Oromia	663	103	766
Sidama	59	4	63
SNNP	307	2	309
Somali	605	60	665
South West Ethiopia Peoples	38	0	38
Tigray	0	643	643
<b>Total</b>	<b>2,469</b>	<b>924</b>	<b>3,393</b>



## I.2 KEY FINDINGS: SITE ASSESSMENT (SA)

FIGURE 4. SA COVERAGE IN ETHIOPIA



FIGURE 5. NUMBER OF INTERNALLY DISPLACED PERSONS (IDPs) IN ASSESSED SITES IN ETHIOPIA



FIGURE 6. TOP 3 PRIMARY REASONS FOR DISPLACEMENT IN ASSESSED SITES IN ETHIOPIA

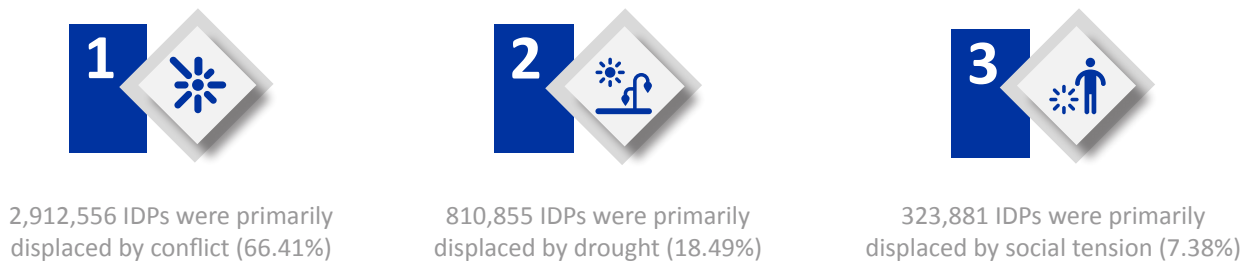


FIGURE 7. SEX-AGE PYRAMID IN ASSESSED SITES IN ETHIOPIA, BY SHARE OF IDPs

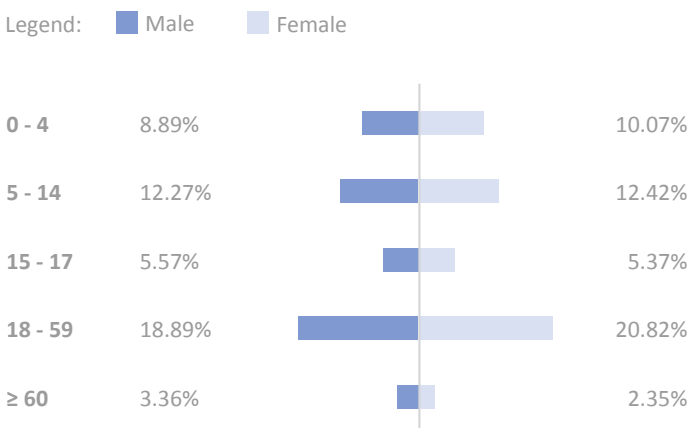
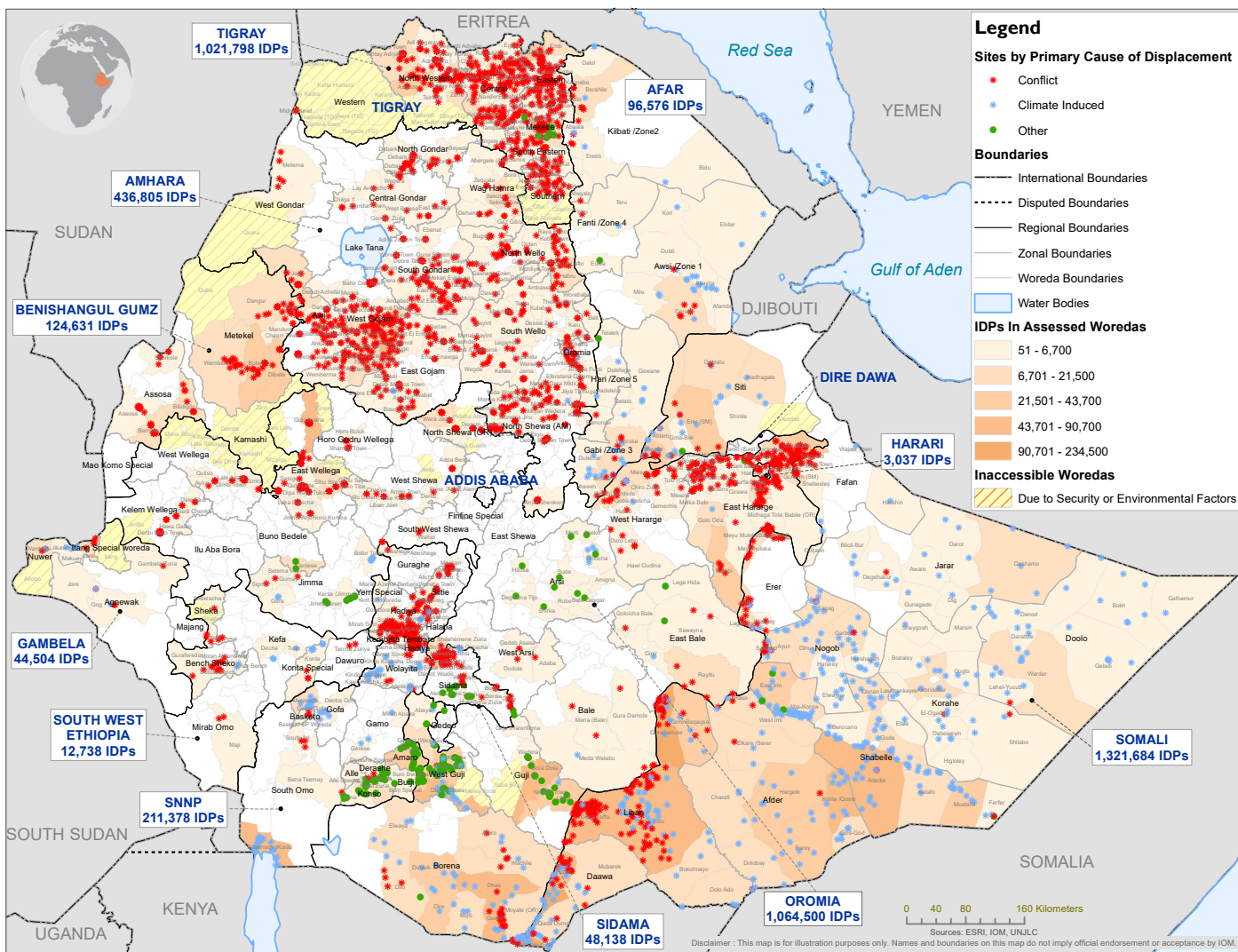


FIGURE 8. IDP CASELOAD IN ASSESSED SITES IN ETHIOPIA, BY REGION

Region	No. of IDP individuals	% of IDP individuals
Afar	96,576	2.20%
Amhara	436,805	9.96%
Benishangul Gumz	124,631	2.84%
Dire Dawa	0	0.00%
Gambela	44,504	1.01%
Harari	3,037	0.07%
<b>Oromia</b>	<b>1,064,500</b>	<b>24.27%</b>
Sidama	48,138	1.10%
SNNP	211,378	4.82%
<b>Somali</b>	<b>1,321,684</b>	<b>30.14%</b>
South West Ethiopia Peoples	12,738	0.29%
Tigray	1,021,798	23.30%
<b>Grand Total</b>	<b>4,385,789</b>	<b>100%</b>

### I.3 OVERVIEW OF DISPLACEMENT

FIGURE 9. DISPLACEMENT CASELOAD IN ACCESSIBLE SITES IN ETHIOPIA BASED ON IOM-DTM SITE ASSESSMENT (SA) CONSOLIDATED FIGURE FROM ROUND 32 (NOV 2022 - JAN 2023) AND ROUND 33 (APRIL - JUNE 2023)



As of June 2023, 4,385,789 IDPs (872,483 IDP households) were internally displaced across 3,393 assessed, accessible sites in Ethiopia.

Conflict is the primary cause of displacement and displaced 2.9 million IDPs (66.41%), followed by drought which displaced 810,855 IDPs (18.49%). Social tension displaced 323,881 IDPs (7.38%), other-climate induced factors (seasonal floods, flash floods, landslides and fire) displaced 320,244 IDPs (7.3%) and other factors (hydropower project, relocation, wind and swampy land) displaced 18,253 IDPs (0.42%).

As seen in Figure 8 on previous page, the regions of Somali (1,321,684 IDPs or 30.14%), Oromia (1,064,500 IDPs or 24.27%) and Tigray (1,021,798 IDPs or 23.3%) present the highest IDP caseloads nationwide.

Somali region also hosts the highest number of IDPs primarily displaced by drought nationwide (542,807 individuals or 66.94% of national drought caseload), while Tigray region hosts the highest number of IDPs primarily displaced by conflict nationwide (1,011,636 individuals or 34.73% of national conflict caseload).

# SECTION 2: VILLAGE ASSESSMENT SURVEY (VAS)

## TRACKING RETURNS IN ETHIOPIA

## 2.1 METHODOLOGY: VILLAGE ASSESSMENT SURVEY (VAS)

The Village Assessment Survey (VAS) was used for the first time in IOM Ethiopia in July 2019 in response to the government-led return movement in an effort to capture return trends and sectoral needs in areas reporting high return concentrations. This is the 16th round of VAS data collection. VAS targets villages with reported returns equal to or greater than 20 returning IDP households that returned from 1 January 2021. The purpose of VAS is to assess the capacity of villages to absorb returns through the availability of services with a focus on reintegration. All VAS data is collected in collaboration with the Ethiopia Disaster Risk Management Commission (EDRMC) at the federal and lower administrative levels.

**Zone level:** Data is collected through interviews with key informants from the Disaster Risk Management Office (DRMO), community representatives, and the education and health offices. This data includes the estimated number of returning IDPs individuals, a list of woredas within the zone that host returning IDPs, their reasons for initial displacement, time of return and locations.

**Woreda level:** Information is collected through key informants at woreda level and includes number of returning IDP households and individuals at woreda and kebele level, village typology and approximate locations of identifiable villages of return, among other indicators. The information is used to plan the roll out of the Village Assessment Survey (VAS).

**Village level:** Village Assessment Survey (VAS) is conducted in locations hosting a reported 20 or more returning IDP households defined through previous rounds of data collection and the above mentioned interviews at the higher administrative levels. Villages with fewer than 20 returning IDP households are not assessed. Information is collected through group discussions with key informants, key informant interviews and direct observation. VAS gathers information on returning IDPs, including on their locations, reasons for initial displacement and household demographics.

Demographic information was collected through representative sampling at the village level at a 95% confidence interval and a 10% margin of error. Overall, 168,424 households were interviewed nationwide to inform the demographic information and initial reasons for displacement. In Shire woreda (North Western zone, in Tigray region) demographic information was collected

through key informants due to operational constraints.

Between April and June 2023, IOM DTM deployed the VAS Round 16 in 1,027 villages across Tigray, Afar, Amhara, Oromia, SNNP and South West Ethiopia Peoples regions. In Tigray region, DTM deployed the VAS in 963 accessible villages. Out of the 88 woredas in Tigray, 24 woredas were inaccessible for the VAS. Therefore, the returning IDP regional and national figures should likely be higher.

IOM DTM deployed the VAS Round 16 (figure update) in 64 villages across Afar, Amhara, Oromia, SNNP and South West Ethiopia Peoples regions. Out of the 64 assessed villages, 61 villages had not been assessed before and 3 had reopened.

The VAS Round 15 (November 2022 - January 2023) data was compiled with the VAS Round 16 (April - June 2023) data to consolidate a national returning IDP figure updated to June 2023 for 2,754 villages. The villages assessed during both Round 15 and Round 16 are not duplicated in the consolidated figure.

**FIGURE 10. NUMBER OF ASSESSED VILLAGES INCLUDED IN UPDATED RETURNING IDP FIGURE (NOVEMBER 2022 - JUNE 2023), BY REGION AND ROUND OF DATA COLLECTION**

Regions	Villages assessed in Round 15 included in updated figure	Villages assessed in Round 16 included in updated figure	Total villages included in updated figure
Afar	177	16	193
Amhara	1,139	21	1,160
Benishangul Gumz	93	0	93
Dire Dawa	0	0	0
Gambela	36	0	36
Harari	0	0	0
Oromia	83	10	93
Sidama	14	0	14
SNNP	91	16	107
Somali	11	0	11
South West Ethiopia Peoples	83	1	84
Tigray	0	963	963
<b>Total</b>	<b>1,727</b>	<b>1,027</b>	<b>2,754</b>

## 2.2 KEY FINDINGS: VILLAGE ASSESSMENT SURVEY (VAS)

FIGURE 11. VAS COVERAGE IN ETHIOPIA



FIGURE 12. NUMBER OF RETURNING IDPs IN ASSESSED VILLAGES IN ETHIOPIA

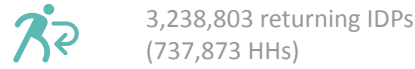


FIGURE 13. PRIMARY REASONS FOR INITIAL DISPLACEMENT IN ASSESSED VILLAGES IN ETHIOPIA



3,134,542 returning IDPs were initially primarily displaced by conflict (96.78%)



60,013 returning IDPs were initially primarily displaced by other climate-induced factors (1.85%)



44,248 returning IDPs were initially primarily displaced by drought (1.37%)

FIGURE 14. SEX-AGE PYRAMID IN ASSESSED VILLAGES IN ETHIOPIA, BY SHARE OF RETURNING IDPs

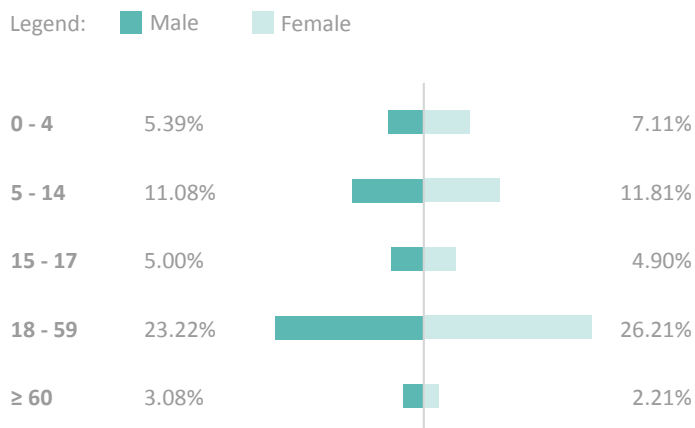
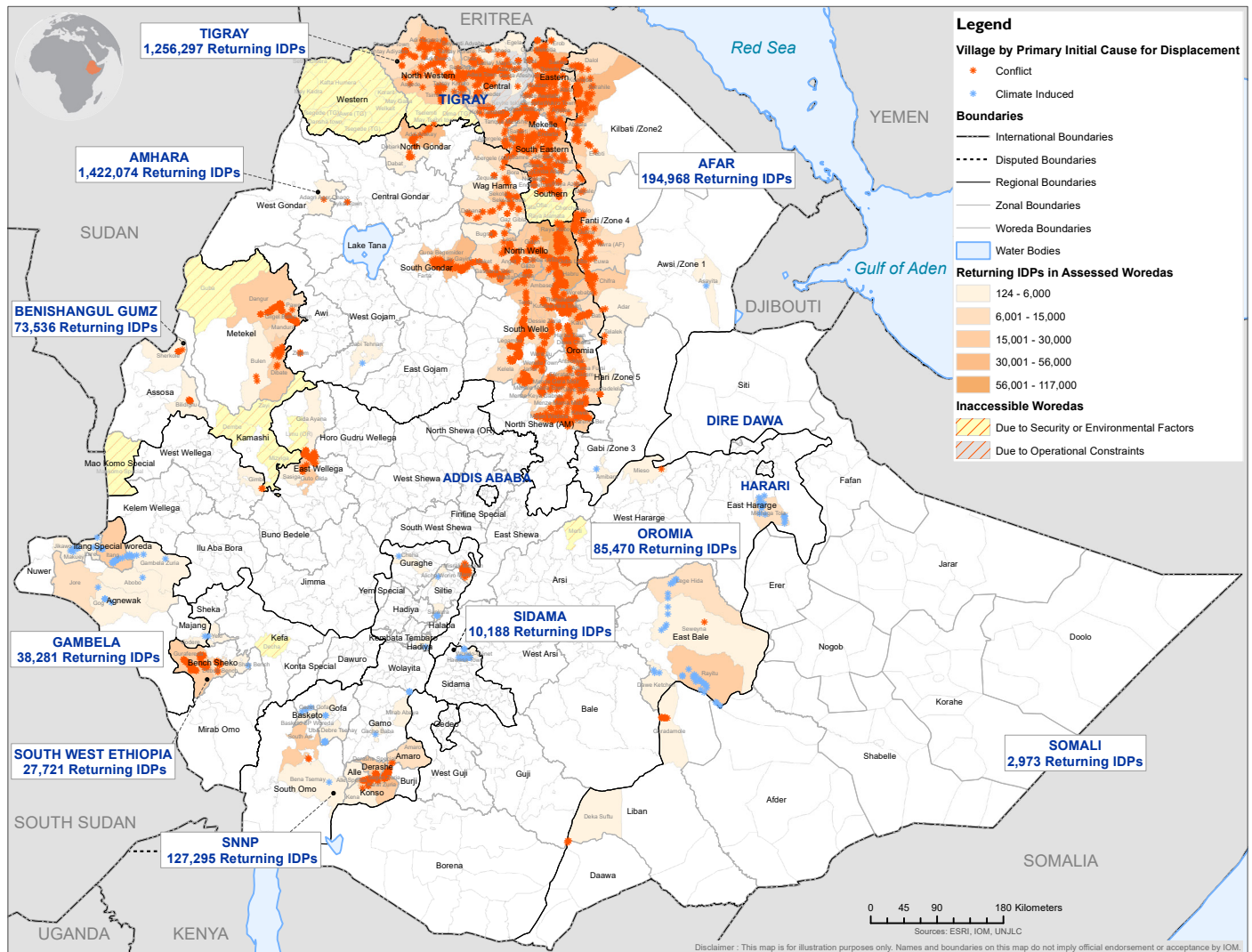


FIGURE 15. RETURNING IDP CASELOAD IN ASSESSED VILLAGES IN ETHIOPIA, BY REGION

Region	No. of returning IDP individuals	% of returning IDP individuals
Afar	194,968	6.02%
Amhara	1,422,074	43.91%
Benishangul Gumz	73,536	2.27%
Dire Dawa	0	0.00%
Gambela	38,281	1.18%
Harari	0	0.00%
Oromia	85,470	2.64%
Sidama	10,188	0.31%
SNNP	127,295	3.93%
Somali	2,973	0.09%
South West Ethiopia Peoples	27,721	0.86%
Tigray	1,256,297	38.79%
<b>Grand Total</b>	<b>3,238,803</b>	<b>100.00%</b>

## 2.3 OVERVIEW OF RETURN

FIGURE 16. RETURNING IDP CASELOAD IN ACCESSIBLE VILLAGES IN ETHIOPIA BASED ON IOM-DTM VILLAGE ASSESSMENT SURVEY (VAS) CONSOLIDATED FIGURE FROM ROUND 15 (NOV 2022 - JAN 2023) AND ROUND 16 (APRIL - JUNE 2023)



As of June 2023, IOM DTM estimated 3,238,803 returning IDPs (737,873 returning IDP households) across 2,754 assessed, accessible villages in Ethiopia.

Conflict was reported as the primary reason for initial displacement for the majority of returning IDPs (3,134,542 returning IDPs, 96.78%). This is followed by 60,013 returning IDPs initially primarily displaced by other climate-

induced factors (1.85%) and 44,248 returning IDPs initially primarily displaced by drought (1.37%).

As seen on Figure 15 on previous page, as of June 2023, the highest returning IDP caseloads nationwide were in the regions of Amhara (1,422,074 returning IDPs, 43.91%), Tigray (1,256,297 returning IDPs, 38.79%) and Afar (194,968 returning IDPs, 6.02%).

## 3. ANNEXES

### 3.1 SUMMARY TABLES OF DISPLACEMENT (SA), ZONAL AND WOREDA LEVEL

#### AFAR

Zone	Woreda	Primary Cause	Sites Opened Before 2022			Sites Opened During 2022			Sites Opened During 2023			Total HH	Total Indiv	Total Sites
			HH	Indiv.	Sites	HH	Indiv.	Sites	HH	Indiv.	Sites			
Awsi (Zone 1)	Afambo	Other climate induced	365	2,254	3	-	-	-	-	-	-	365	2,254	3
Awsi (Zone 1)	Aysaita	Other climate induced	255	1,556	3	450	2,698	2	-	-	-	705	4,254	5
Awsi (Zone 1)	Dubti	Other climate induced	524	3,199	2	300	1,743	1	-	-	-	824	4,942	3
Awsi (Zone 1)	Elidar	Drought	166	964	2	-	-	-	-	-	-	166	964	2
Awsi (Zone 1)	Mile	Other climate induced	200	1,197	1	-	-	-	65	388	1	265	1,585	2
Awsi (Zone 1)	Kurri	Drought	56	325	1	-	-	-	-	-	-	56	325	1
Awsi (Zone 1)	Gerani	Conflict	1,149	6,898	5	-	-	-	-	-	-	1,149	6,898	5
Awsi (Zone 1)	Gerani	Drought	-	-	-	40	247	1	-	-	-	40	247	1
Awsi (Zone 1)	Gerani	Other climate induced	-	-	-	135	803	2	-	-	-	135	803	2
Awsi (Zone 1)	Dubti City Administration	Conflict	-	-	-	65	396	1	-	-	-	65	396	1
<b>Awsi (Zone 1) Total</b>			<b>2,715</b>	<b>16,393</b>	<b>17</b>	<b>990</b>	<b>5,887</b>	<b>7</b>	<b>65</b>	<b>388</b>	<b>1</b>	<b>3,770</b>	<b>22,668</b>	<b>25</b>
Fenti (Zone 4)	Teru	Drought	37	204	1	-	-	-	-	-	-	37	204	1
Fenti (Zone 4)	Ewa	Other	69	421	1	-	-	-	-	-	-	69	421	1
Fenti (Zone 4)	Yalo	Conflict	148	906	1	-	-	-	-	-	-	148	906	1
<b>Fenti (Zone 4) Total</b>			<b>254</b>	<b>1,531</b>	<b>3</b>	<b>-</b>	<b>-</b>	<b>-</b>	<b>-</b>	<b>-</b>	<b>-</b>	<b>254</b>	<b>1,531</b>	<b>3</b>
Gabi (Zone 3)	Amibara	Conflict	645	3,894	2	150	924	1	-	-	-	795	4,818	3
Gabi (Zone 3)	Amibara	Other climate induced	334	1,959	1	232	1,368	2	320	1,958	2	886	5,285	5
Gabi (Zone 3)	Awash Fentale	Other climate induced	290	1,833	2	-	-	-	-	-	-	290	1,833	2
Gabi (Zone 3)	Dulecha	Other climate induced	372	2,159	2	-	-	-	-	-	-	372	2,159	2
Gabi (Zone 3)	Galalu	Other climate induced	50	282	1	-	-	-	-	-	-	50	282	1
Gabi (Zone 3)	Gewane	Other climate induced	300	1,765	2	150	882	1	-	-	-	450	2,647	3
Gabi (Zone 3)	Hanruka	Conflict	755	4,480	4	-	-	-	-	-	-	755	4,480	4
Gabi (Zone 3)	Hanruka	Drought	-	-	-	75	467	1	-	-	-	75	467	1
Gabi (Zone 3)	Hanruka	Other climate induced	450	2,723	1	105	660	1	210	1,326	2	765	4,709	4
Gabi (Zone 3)	Awash City Administration	Conflict	211	1,331	1	-	-	-	-	-	-	211	1,331	1
<b>Gabi (Zone 3) Total</b>			<b>3,407</b>	<b>20,426</b>	<b>16</b>	<b>712</b>	<b>4,301</b>	<b>6</b>	<b>530</b>	<b>3,284</b>	<b>4</b>	<b>4,649</b>	<b>28,011</b>	<b>26</b>
Hari (Zone 5)	Dalfagi	Drought	30	185	1	-	-	-	-	-	-	30	185	1
Hari (Zone 5)	Hadelela	Drought	301	1,793	1	-	-	-	-	-	-	301	1,793	1
Hari (Zone 5)	Simurobi Gele'alo	Conflict	54	356	1	-	-	-	-	-	-	54	356	1
Hari (Zone 5)	Telalak	Other	40	246	1	-	-	-	-	-	-	40	246	1
<b>Hari (Zone 5) Total</b>			<b>425</b>	<b>2,580</b>	<b>4</b>	<b>-</b>	<b>-</b>	<b>-</b>	<b>-</b>	<b>-</b>	<b>-</b>	<b>425</b>	<b>2,580</b>	<b>4</b>
Kilbati (Zone 2)	Berahile	Conflict	-	-	-	4,160	21,099	3	-	-	-	4,160	21,099	3
Kilbati (Zone 2)	Berahile	Drought	62	397	1	-	-	-	-	-	-	62	397	1
Kilbati (Zone 2)	Bidu	Other climate induced	150	925	1	-	-	-	-	-	-	150	925	1
Kilbati (Zone 2)	Dalul	Other climate induced	238	1,346	1	70	438	1	-	-	-	308	1,784	2
Kilbati (Zone 2)	Erebt	Drought	35	215	1	-	-	-	-	-	-	35	215	1
Kilbati (Zone 2)	Koneba	Conflict	-	-	-	1,376	8,364	3	-	-	-	1,376	8,364	3
Kilbati (Zone 2)	Megale	Conflict	-	-	-	900	5,451	1	-	-	-	900	5,451	1
Kilbati (Zone 2)	Ab Ala	Conflict	-	-	-	501	2,965	4	-	-	-	501	2,965	4
Kilbati (Zone 2)	Ab Ala	Drought	-	-	-	96	586	1	-	-	-	96	586	1
<b>Kilbati (Zone 2) Total</b>			<b>485</b>	<b>2,883</b>	<b>4</b>	<b>7,103</b>	<b>38,903</b>	<b>13</b>	<b>-</b>	<b>-</b>	<b>-</b>	<b>7,588</b>	<b>41,786</b>	<b>17</b>
<b>Grand Total</b>			<b>7,286</b>	<b>43,813</b>	<b>44</b>	<b>8,805</b>	<b>49,091</b>	<b>26</b>	<b>595</b>	<b>3,672</b>	<b>5</b>	<b>16,686</b>	<b>96,576</b>	<b>75</b>

**AMHARA**

Zone	Woreda	Primary Cause	Sites Opened Before 2022			Sites Opened During 2022			Sites Opened During 2023			Total HH	Total Indiv	Total Sites
			HH	Indiv.	Sites	HH	Indiv.	Sites	HH	Indiv.	Sites			
AwilAgew	Chagni	Conflict	463	1,950	3	86	294	1	-	-	-	549	2,244	4
AwilAgew	Guagusa Shikudad	Conflict	192	675	3	-	-	-	-	-	-	192	675	3
AwilAgew	Dangila	Conflict	394	1,571	7	-	-	-	-	-	-	394	1,571	7
AwilAgew	Fagta Lakoma	Conflict	1,038	4,548	16	-	-	-	-	-	-	1,038	4,548	16
AwilAgew	Jawi	Conflict	1,918	7,576	12	-	-	-	-	-	-	1,918	7,576	12
AwilAgew	Zigem	Conflict	826	4,345	10	-	-	-	-	-	-	826	4,345	10
AwilAgew	Ankasha	Conflict	95	290	3	-	-	-	-	-	-	95	290	3
AwilAgew	Ayehu Guagusa	Conflict	757	3,063	4	-	-	-	-	-	-	757	3,063	4
AwilAgew	Banja	Conflict	549	2,445	8	-	-	-	-	-	-	549	2,445	8
AwilAgew	Injibara City Administration	Conflict	252	871	4	-	-	-	-	-	-	252	871	4
AwilAgew	Dangila City Administration	Conflict	259	994	5	-	-	-	-	-	-	259	994	5
<b>AwilAgew Total</b>			<b>6,743</b>	<b>28,328</b>	<b>75</b>	<b>86</b>	<b>294</b>	<b>1</b>	<b>-</b>	<b>-</b>	<b>-</b>	<b>6,829</b>	<b>28,622</b>	<b>76</b>
Bahir Dar	Belay Zeleke Sub City	Conflict	332	1,243	3	-	-	-	-	-	-	332	1,243	3
Bahir Dar	Atse Tewodros Sub City	Conflict	756	3,039	4	-	-	-	-	-	-	756	3,039	4
Bahir Dar	Dagnawi Menilik Sub City	Conflict	209	889	4	-	-	-	-	-	-	209	889	4
Bahir Dar	Tana Sub City	Conflict	135	551	2	-	-	-	-	-	-	135	551	2
<b>Bahir Dar Total</b>			<b>1,432</b>	<b>5,722</b>	<b>13</b>	<b>-</b>	<b>-</b>	<b>-</b>	<b>-</b>	<b>-</b>	<b>-</b>	<b>1,432</b>	<b>5,722</b>	<b>13</b>
Central Gonder	Gonder Zuria	Conflict	315	1,077	2	25	112	1	-	-	-	340	1,189	3
Central Gonder	East Belesa	Conflict	428	1,884	6	-	-	-	-	-	-	428	1,884	6
Central Gonder	Lay Armacheho	Conflict	258	1,478	1	-	-	-	-	-	-	258	1,478	1
Central Gonder	Chilga I	Conflict	296	1,256	2	178	861	1	-	-	-	474	2,117	3
Central Gonder	Gonder City Administration	Conflict	555	2,775	1	-	-	-	-	-	-	555	2,775	1
Central Gonder	West Belesa	Conflict	149	549	1	-	-	-	-	-	-	149	549	1
Central Gonder	Wogera	Conflict	192	797	2	-	-	-	-	-	-	192	797	2
<b>Central Gonder Total</b>			<b>2,193</b>	<b>9,816</b>	<b>15</b>	<b>203</b>	<b>973</b>	<b>2</b>	<b>-</b>	<b>-</b>	<b>-</b>	<b>2,396</b>	<b>10,789</b>	<b>17</b>
East Gojam	Baso Liben	Conflict	1,060	3,636	7	-	-	-	-	-	-	1,060	3,636	7
East Gojam	Goncha Siso Enese	Conflict	578	2,145	6	38	147	1	-	-	-	616	2,292	7
East Gojam	Debre Markos	Conflict	559	2,342	7	46	214	1	-	-	-	605	2,556	8
East Gojam	Enbise Sar Midir	Conflict	204	783	2	48	181	1	-	-	-	252	964	3
East Gojam	Guzamn	Conflict	72	304	2	-	-	-	-	-	-	72	304	2
East Gojam	Guzamn	Other climate induced	130	591	2	-	-	-	-	-	-	130	591	2
East Gojam	Awabel	Conflict	98	403	2	-	-	-	-	-	-	98	403	2
East Gojam	Merto Lemariyam City Admin.	Conflict	234	892	5	-	-	-	-	-	-	234	892	5
East Gojam	Michakel	Conflict	715	2,469	7	-	-	-	-	-	-	715	2,469	7
East Gojam	Aneded	Conflict	94	368	3	-	-	-	-	-	-	94	368	3
East Gojam	Bibugn	Conflict	640	2,506	4	50	188	1	-	-	-	690	2,694	5
East Gojam	Debre Elias	Conflict	162	670	3	-	-	-	-	-	-	162	670	3
East Gojam	Enarj Enawga	Conflict	197	651	4	-	-	-	-	-	-	197	651	4
East Gojam	Hulet Ej Enese	Conflict	292	1,149	7	-	-	-	-	-	-	292	1,149	7
East Gojam	Sede	Conflict	343	1,024	3	-	-	-	-	-	-	343	1,024	3
<b>East Gojam Total</b>			<b>5,378</b>	<b>19,933</b>	<b>64</b>	<b>182</b>	<b>730</b>	<b>4</b>	<b>-</b>	<b>-</b>	<b>-</b>	<b>5,560</b>	<b>20,663</b>	<b>68</b>
North Gonder	Debark	Conflict	172	581	4	-	-	-	-	-	-	172	581	4
North Gonder	Dabat	Conflict	1,518	6,640	11	-	-	-	-	-	-	1,518	6,640	11
North Gonder	Dabat City Administration	Conflict	678	2,400	4	-	-	-	-	-	-	678	2,400	4
North Gonder	Debark City Administration	Conflict	4,251	14,571	3	-	-	-	-	-	-	4,251	14,571	3
North Gonder	Janamora	Conflict	276	583	6	-	-	-	-	-	-	276	583	6
North Gonder	Beyeda	Conflict	241	632	3	-	-	-	-	-	-	241	632	3
<b>North Gonder Total</b>			<b>7,136</b>	<b>25,407</b>	<b>31</b>	<b>-</b>	<b>-</b>	<b>-</b>	<b>-</b>	<b>-</b>	<b>-</b>	<b>7,136</b>	<b>25,407</b>	<b>31</b>
North Shewa (R3)	Minjar Shenkora	Conflict	391	1,512	4	-	-	-	376	1,328	3	767	2,840	7
North Shewa (R3)	Menz Keya Gabriel	Conflict	568	2,713	5	-	-	-	70	304	1	638	3,017	6
North Shewa (R3)	Siya Debirna Wayu	Conflict	-	-	-	-	-	-	247	1,143	2	247	1,143	2
North Shewa (R3)	Debrebirhan City Administration	Conflict	5,344	26,346	10	2,424	6,015	3	-	-	-	7,768	32,361	13
North Shewa (R3)	Menz Gera Midir	Conflict	181	624	4	-	-	-	-	-	-	181	624	4
North Shewa (R3)	Ensaro	Conflict	346	945	4	-	-	-	632	2,739	6	978	3,684	10



Zone	Woreda	Primary Cause	Sites Opened Before 2022			Sites Opened During 2022			Sites Opened During 2023			Total HH	Total Indiv	Total Sites
			HH	Indiv.	Sites	HH	Indiv.	Sites	HH	Indiv.	Sites			
North Shewa (R3)	Moretna Jiru	Conflict	-	-	-	47	136	1	-	-	-	47	136	1
North Shewa (R3)	Ataye City Administration	Conflict	150	625	1	64	175	1	-	-	-	214	800	2
North Shewa (R3)	Eferatana Gidem	Conflict	350	1,464	1	-	-	-	-	-	-	350	1,464	1
North Shewa (R3)	Kewet	Conflict	-	-	-	25	92	1	98	394	3	123	486	4
North Shewa (R3)	Mehal Meda City Administration	Conflict	93	326	2	-	-	-	-	-	-	93	326	2
North Shewa (R3)	Shoa Robit City Administration	Conflict	208	648	3	991	4,286	3	24	99	1	1,223	5,033	7
North Shewa (R3)	Antsokiya	Conflict	99	394	2	33	149	1	90	351	3	222	894	6
North Shewa (R3)	Menz Mama Midir	Other climate induced	43	164	1	-	-	-	-	-	-	43	164	1
North Shewa (R3)	Mida Weremo	Conflict	33	111	1	114	317	2	-	-	-	147	428	3
North Shewa (R3)	Alem Ketema City Administration	Conflict	323	1,223	3	150	580	1	-	-	-	473	1,803	4
North Shewa (R3)	Mojan Wedera	Conflict	-	-	-	233	1,059	2	192	796	2	425	1,855	4
North Shewa (R3)	Enewari City Administration	Conflict	491	1,641	4	-	-	-	-	-	-	491	1,641	4
North Shewa (R3)	Debresina City Administration	Conflict	-	-	-	-	-	-	96	432	2	96	432	2
North Shewa (R3)	Menz Lalo Midir	Conflict	-	-	-	55	229	2	315	1,306	6	370	1,535	8
North Shewa (R3)	Merahbete	Conflict	-	-	-	-	-	-	1,213	4,960	12	1,213	4,960	12
North Shewa (R3)	Molale City Administration	Conflict	-	-	-	-	-	-	155	670	2	155	670	2
<b>North Shewa (R3) Total</b>			<b>8,620</b>	<b>38,736</b>	<b>45</b>	<b>4,136</b>	<b>13,038</b>	<b>17</b>	<b>3,508</b>	<b>14,522</b>	<b>43</b>	<b>16,264</b>	<b>66,296</b>	<b>105</b>
North Wollo	Habru	Conflict	319	1,217	6	3,900	11,699	1	-	-	-	4,219	12,916	7
North Wollo	Wadla	Conflict	149	509	3	-	-	-	-	-	-	149	509	3
North Wollo	Gazo	Conflict	56	178	1	-	-	-	-	-	-	56	178	1
North Wollo	Guba Lafto	Conflict	34	112	1	-	-	-	24	74	1	58	186	2
North Wollo	Kobo	Conflict	67	242	2	-	-	-	-	-	-	67	242	2
North Wollo	Meresa City Administration	Conflict	189	542	2	-	-	-	-	-	-	189	542	2
North Wollo	Woldiya City Administration	Conflict	354	1,110	7	-	-	-	-	-	-	354	1,110	7
North Wollo	Lalibela City Administration	Conflict	502	1,568	5	-	-	-	-	-	-	502	1,568	5
North Wollo	Lasta	Conflict	907	2,860	10	-	-	-	-	-	-	907	2,860	10
North Wollo	Dawunt	Conflict	229	814	1	-	-	-	-	-	-	229	814	1
North Wollo	Meket	Conflict	222	851	4	-	-	-	-	-	-	222	851	4
North Wollo	Filakit City Administration	Conflict	493	1,641	2	-	-	-	-	-	-	493	1,641	2
North Wollo	Gashena City Administration	Conflict	363	1,351	1	-	-	-	-	-	-	363	1,351	1
North Wollo	Gidan	Conflict	187	616	2	-	-	-	-	-	-	187	616	2
North Wollo	Hara City Administration	Conflict	206	709	5	20	88	1	-	-	-	226	797	6
North Wollo	Kobo City Administration	Conflict	378	1,372	4	-	-	-	-	-	-	378	1,372	4
North Wollo	Raya Kobo	Conflict	619	2,171	10	-	-	-	-	-	-	619	2,171	10
North Wollo	Bugna	Conflict	89	202	2	101	317	1	-	-	-	190	519	3
<b>North Wollo Total</b>			<b>5,363</b>	<b>18,065</b>	<b>68</b>	<b>4,021</b>	<b>12,104</b>	<b>3</b>	<b>24</b>	<b>74</b>	<b>1</b>	<b>9,408</b>	<b>30,243</b>	<b>72</b>
Oromia	Bati	Conflict	-	-	-	42	200	1	-	-	-	42	200	1
Oromia	Dewa Cheffa	Conflict	70	300	2	161	675	4	-	-	-	231	975	6
Oromia	Dewa Cheffa	Other climate induced	-	-	-	184	827	2	-	-	-	184	827	2
Oromia	Artuma Fursi	Conflict	510	2,450	5	40	177	1	185	929	3	735	3,556	9
Oromia	Jille Timuga	Conflict	36	165	1	-	-	-	106	436	1	142	601	2
Oromia	Kemissie City Administration	Conflict	58	262	2	234	949	3	-	-	-	292	1,211	5
<b>Oromia Total</b>			<b>674</b>	<b>3,177</b>	<b>10</b>	<b>661</b>	<b>2,828</b>	<b>11</b>	<b>291</b>	<b>1,365</b>	<b>4</b>	<b>1,626</b>	<b>7,370</b>	<b>25</b>
South Gonder	Anda Bet	Conflict	393	1,426	6	-	-	-	-	-	-	393	1,426	6
South Gonder	Debre Tabor City Administration	Conflict	378	1,340	6	-	-	-	-	-	-	378	1,340	6
South Gonder	Esite	Conflict	1,930	6,666	12	-	-	-	-	-	-	1,930	6,666	12
South Gonder	Farta	Conflict	46	145	2	-	-	-	-	-	-	46	145	2
South Gonder	Addis Zemen City Administration	Conflict	276	848	4	-	-	-	-	-	-	276	848	4
South Gonder	Dera	Conflict	147	663	3	-	-	-	-	-	-	147	663	3
South Gonder	Guna Begemidir	Conflict	294	1,128	3	-	-	-	-	-	-	294	1,128	3
South Gonder	Nefas Mewicha City Administration	Conflict	135	517	3	-	-	-	-	-	-	135	517	3
South Gonder	Sede Muja	Conflict	564	2,197	4	-	-	-	190	719	3	754	2,916	7
South Gonder	Woreta City Administration	Conflict	200	764	3	20	79	1	-	-	-	220	843	4
South Gonder	Ebenat	Conflict	451	1,670	3	-	-	-	-	-	-	451	1,670	3
South Gonder	Mekane Eyessus City Administration	Conflict	401	1,605	3	-	-	-	-	-	-	401	1,605	3
South Gonder	Simada	Conflict	1,089	4,258	14	-	-	-	-	-	-	1,089	4,258	14

Zone	Woreda	Primary Cause	Sites Opened Before 2022			Sites Opened During 2022			Sites Opened During 2023			Total HH	Total Indiv	Total Sites
			HH	Indiv.	Sites	HH	Indiv.	Sites	HH	Indiv.	Sites			
South Gondar	Hamusit City Administration	Conflict	67	264	1	-	-	-	-	-	-	67	264	1
South Gondar	Lay Gayint	Conflict	131	586	4	31	157	1	-	-	-	162	743	5
South Gondar	Tach Gayint	Conflict	583	2,599	6	-	-	-	-	-	-	583	2,599	6
South Gondar	Wegeida City Administration	Conflict	268	1,073	2	-	-	-	-	-	-	268	1,073	2
<b>South Gondar Total</b>			<b>7,353</b>	<b>27,749</b>	<b>79</b>	<b>51</b>	<b>236</b>	<b>2</b>	<b>190</b>	<b>719</b>	<b>3</b>	<b>7,594</b>	<b>28,704</b>	<b>84</b>
South Wollo	Mekdela	Conflict	853	3,046	8	25	89	1	-	-	-	878	3,135	9
South Wollo	Wegede	Conflict	124	453	4	-	-	-	-	-	-	124	453	4
South Wollo	Kalu	Conflict	707	2,744	2	-	-	-	-	-	-	707	2,744	2
South Wollo	Mehal Sayint	Conflict	215	767	1	-	-	-	-	-	-	215	767	1
South Wollo	Borena	Conflict	154	670	4	-	-	-	-	-	-	154	670	4
South Wollo	Thehulederie	Conflict	888	2,574	3	538	1,416	1	-	-	-	1,426	3,990	4
South Wollo	Ambasel	Conflict	127	412	1	-	-	-	-	-	-	127	412	1
South Wollo	Jama	Conflict	630	1,975	6	-	-	-	-	-	-	630	1,975	6
South Wollo	Were Illu City Administration	Conflict	56	223	1	-	-	-	-	-	-	56	223	1
South Wollo	Kelela	Conflict	238	840	3	-	-	-	-	-	-	238	840	3
South Wollo	Kutaber	Conflict	181	703	1	-	-	-	-	-	-	181	703	1
South Wollo	Legehida	Conflict	38	116	1	-	-	-	-	-	-	38	116	1
South Wollo	Mekane Selam City Administration	Conflict	546	2,026	5	-	-	-	-	-	-	546	2,026	5
South Wollo	Tenta	Conflict	324	1,256	7	31	111	1	-	-	-	355	1,367	8
South Wollo	Worebabu	Conflict	45	128	1	142	364	2	-	-	-	187	492	3
South Wollo	Akesta City Administration	Conflict	54	185	1	-	-	-	-	-	-	54	185	1
South Wollo	Dessie Zuria	Conflict	-	-	-	201	618	1	-	-	-	201	618	1
South Wollo	Legambo	Conflict	78	298	2	-	-	-	-	-	-	78	298	2
South Wollo	Harbu City Administration	Conflict	395	1,792	2	137	561	1	-	-	-	532	2,353	3
South Wollo	Sayint	Conflict	40	127	1	50	201	1	-	-	-	90	328	2
South Wollo	Delanta	Conflict	161	597	3	-	-	-	-	-	-	161	597	3
<b>South Wollo Total</b>			<b>5,854</b>	<b>20,932</b>	<b>57</b>	<b>1,124</b>	<b>3,360</b>	<b>8</b>	<b>-</b>	<b>-</b>	<b>-</b>	<b>6,978</b>	<b>24,292</b>	<b>65</b>
Special Woreda	Argoba	Conflict	1,209	4,498	4	-	-	-	-	-	-	1,209	4,498	4
<b>Special Woreda Total</b>			<b>1,209</b>	<b>4,498</b>	<b>4</b>	<b>-</b>	<b>-</b>	<b>-</b>	<b>-</b>	<b>-</b>	<b>-</b>	<b>1,209</b>	<b>4,498</b>	<b>4</b>
Wag Himra	Dehana	Conflict	295	1,156	3	53	198	1	-	-	-	348	1,354	4
Wag Himra	Gaz Gibla	Conflict	323	1,105	3	-	-	-	-	-	-	323	1,105	3
Wag Himra	Sekota	Conflict	213	697	2	3,102	16,088	2	-	-	-	3,315	16,785	4
Wag Himra	Ziquala	Conflict	236	935	2	-	-	-	-	-	-	236	935	2
Wag Himra	Abergele	Conflict	-	-	-	-	-	-	1,233	5,102	3	1,233	5,102	3
Wag Himra	Sekota City Administration	Conflict	1,719	8,310	2	1,569	5,343	1	-	-	-	3,288	13,653	3
<b>Wag Himra Total</b>			<b>2,786</b>	<b>12,203</b>	<b>12</b>	<b>4,724</b>	<b>21,629</b>	<b>4</b>	<b>1,233</b>	<b>5,102</b>	<b>3</b>	<b>8,743</b>	<b>38,934</b>	<b>19</b>
West Gojam	Sekela	Conflict	1,444	6,954	13	-	-	-	-	-	-	1,444	6,954	13
West Gojam	Dega Damot	Conflict	10,836	53,801	21	-	-	-	-	-	-	10,836	53,801	21
West Gojam	Quarit	Conflict	4,189	23,342	21	-	-	-	-	-	-	4,189	23,342	21
West Gojam	Jabi Tehnan	Conflict	3,710	18,665	17	-	-	-	-	-	-	3,710	18,665	17
West Gojam	Wemberma	Conflict	337	1,621	4	-	-	-	-	-	-	337	1,621	4
West Gojam	Finote Selam City Administration	Conflict	84	453	4	-	-	-	-	-	-	84	453	4
West Gojam	Adet	Conflict	844	4,107	5	-	-	-	-	-	-	844	4,107	5
West Gojam	Bure	Conflict	206	1,203	6	-	-	-	-	-	-	206	1,203	6
West Gojam	Debub Achefer	Conflict	233	816	2	-	-	-	-	-	-	233	816	2
West Gojam	Dembecha	Conflict	1,472	7,303	10	-	-	-	-	-	-	1,472	7,303	10
West Gojam	Yilmana Densa	Conflict	638	2,972	5	-	-	-	-	-	-	638	2,972	5
West Gojam	Bure City Administration	Conflict	474	2,831	7	-	-	-	-	-	-	474	2,831	7
West Gojam	Debub Mecha	Conflict	1,229	5,897	5	-	-	-	-	-	-	1,229	5,897	5
West Gojam	Gonji	Conflict	2,571	11,447	12	-	-	-	-	-	-	2,571	11,447	12
West Gojam	Merawi Town	Conflict	164	743	3	-	-	-	-	-	-	164	743	3
West Gojam	Semen Mecha	Conflict	185	873	5	-	-	-	-	-	-	185	873	5
<b>West Gojam Total</b>			<b>28,616</b>	<b>143,028</b>	<b>140</b>	<b>-</b>	<b>-</b>	<b>-</b>	<b>-</b>	<b>-</b>	<b>-</b>	<b>28,616</b>	<b>143,028</b>	<b>140</b>
West Gondar	Metema	Conflict	388	1,430	5	-	-	-	-	-	-	388	1,430	5
West Gondar	Midre Genet	Conflict	208	807	2	-	-	-	-	-	-	208	807	2
<b>West Gondar Total</b>			<b>596</b>	<b>2,237</b>	<b>7</b>	<b>-</b>	<b>-</b>	<b>-</b>	<b>-</b>	<b>-</b>	<b>-</b>	<b>596</b>	<b>2,237</b>	<b>7</b>
<b>Grand Total</b>			<b>83,953</b>	<b>359,831</b>	<b>620</b>	<b>15,188</b>	<b>55,192</b>	<b>52</b>	<b>5,246</b>	<b>21,782</b>	<b>54</b>	<b>104,387</b>	<b>436,805</b>	<b>726</b>

## BENISHANGUL GUMZ

Zone	Woreda	Primary Cause	Sites Opened Before 2022			Sites Opened During 2022			Sites Opened During 2023			Total HH	Total Indiv	Total Sites
			HH	Indiv.	Sites	HH	Indiv.	Sites	HH	Indiv.	Sites			
Asosa	Bilidigilu	Conflict	1,600	7,838	7	868	5,208	1	-	-	-	2,468	13,046	8
Asosa	Sherkole	Conflict	355	1,860	5	-	-	-	-	-	-	355	1,860	5
Asosa	Bambasi	Conflict	2,829	13,615	10	-	-	-	-	-	-	2,829	13,615	10
Asosa	Assosa	Conflict	24	82	1	-	-	-	-	-	-	24	82	1
<b>Asosa Total</b>			<b>4,808</b>	<b>23,395</b>	<b>23</b>	<b>868</b>	<b>5,208</b>	<b>1</b>	<b>-</b>	<b>-</b>	<b>-</b>	<b>5,676</b>	<b>28,603</b>	<b>24</b>
Assosa Town Administration	Woreda 1	Conflict	66	292	2	118	509	3	-	-	-	184	801	5
Assosa Town Administration	Woreda 2	Conflict	100	429	3	-	-	-	-	-	-	100	429	3
<b>Assosa Town Administration Total</b>			<b>166</b>	<b>721</b>	<b>5</b>	<b>118</b>	<b>509</b>	<b>3</b>	<b>-</b>	<b>-</b>	<b>-</b>	<b>284</b>	<b>1,230</b>	<b>8</b>
Metekel	Dangura	Conflict	2,335	8,929	4	1,132	4,986	3	-	-	-	3,467	13,915	7
Metekel	Mandura	Conflict	653	3,327	3	361	1,816	1	-	-	-	1,014	5,143	4
Metekel	Pawe Special	Conflict	1,233	5,401	9	481	1,997	2	-	-	-	1,714	7,398	11
Metekel	Bulen	Conflict	4,593	27,564	10	260	1,269	2	-	-	-	4,853	28,833	12
Metekel	Dibat	Conflict	4,501	28,013	4	-	-	-	-	-	-	4,501	28,013	4
Metekel	Wenbera	Conflict	2,338	11,496	12	-	-	-	-	-	-	2,338	11,496	12
<b>Metekel Total</b>			<b>15,653</b>	<b>84,730</b>	<b>42</b>	<b>2,234</b>	<b>10,068</b>	<b>8</b>	<b>-</b>	<b>-</b>	<b>-</b>	<b>17,887</b>	<b>94,798</b>	<b>50</b>
<b>Grand Total</b>			<b>20,627</b>	<b>108,846</b>	<b>70</b>	<b>3,220</b>	<b>15,785</b>	<b>12</b>	<b>-</b>	<b>-</b>	<b>-</b>	<b>23,847</b>	<b>124,631</b>	<b>82</b>

## GAMBELA

Zone	Woreda	Primary Cause	Sites Opened Before 2022			Sites Opened During 2022			Sites Opened During 2023			Total HH	Total Indiv	Total Sites
			HH	Indiv.	Sites	HH	Indiv.	Sites	HH	Indiv.	Sites			
Agnuak	Gog	Conflict	755	4,102	2	-	-	-	-	-	-	755	4,102	2
Agnuak	Gog	Other climate induced	-	-	-	40	208	1	-	-	-	40	208	1
Agnuak	Jore	Conflict	75	405	1	-	-	-	-	-	-	75	405	1
Agnuak	Jore	Other climate induced	-	-	-	81	410	1	-	-	-	81	410	1
Agnuak	Gambella Zuria	Conflict	-	-	-	32	171	1	-	-	-	32	171	1
<b>Agnuak Total</b>			<b>830</b>	<b>4,507</b>	<b>3</b>	<b>153</b>	<b>789</b>	<b>3</b>	<b>-</b>	<b>-</b>	<b>-</b>	<b>983</b>	<b>5,296</b>	<b>6</b>
Nuer	Jikawo	Other climate induced	849	4,280	2	-	-	-	-	-	-	849	4,280	2
Nuer	Lare	Conflict	1,691	8,875	3	543	2,715	1	-	-	-	2,234	11,590	4
Nuer	Wantawo	Conflict	575	3,144	2	-	-	-	-	-	-	575	3,144	2
Nuer	Wantawo	Other climate induced	-	-	-	3,580	17,900	2	-	-	-	3,580	17,900	2
Nuer	Makuey	Other climate induced	-	-	-	424	2,294	1	-	-	-	424	2,294	1
<b>Nuer Total</b>			<b>3,115</b>	<b>16,299</b>	<b>7</b>	<b>4,547</b>	<b>22,909</b>	<b>4</b>	<b>-</b>	<b>-</b>	<b>-</b>	<b>7,662</b>	<b>39,208</b>	<b>11</b>
<b>Grand Total</b>			<b>3,945</b>	<b>20,806</b>	<b>10</b>	<b>4,700</b>	<b>23,698</b>	<b>7</b>	<b>-</b>	<b>-</b>	<b>-</b>	<b>8,645</b>	<b>44,504</b>	<b>17</b>

## HARARI

Zone	Woreda	Primary Cause	Sites Opened Before 2022			Sites Opened During 2022			Sites Opened During 2023			Total HH	Total Indiv	Total Sites
			HH	Indiv.	Sites	HH	Indiv.	Sites	HH	Indiv.	Sites			
Harari	Erer Woldiya	Conflict	47	234	1	-	-	-	-	-	-	47	234	1
Harari	Abadir	Conflict	25	126	1	-	-	-	-	-	-	25	126	1
Harari	Abo Ker	Conflict	30	163	1	-	-	-	-	-	-	30	163	1
Harari	Amir Nur	Conflict	85	321	1	-	-	-	-	-	-	85	321	1
Harari	Hakim	Conflict	324	1,472	2	-	-	-	-	-	-	324	1,472	2
Harari	Jenela	Conflict	32	198	1	-	-	-	-	-	-	32	198	1
Harari	Shenkor	Conflict	23	51	1	-	-	-	-	-	-	23	51	1
Harari	Sofi	Conflict	101	472	1	-	-	-	-	-	-	101	472	1
<b>Harari Total</b>			<b>667</b>	<b>3,037</b>	<b>9</b>	<b>-</b>	<b>-</b>	<b>-</b>	<b>-</b>	<b>-</b>	<b>-</b>	<b>667</b>	<b>3,037</b>	<b>9</b>
<b>Grand Total</b>			<b>667</b>	<b>3,037</b>	<b>9</b>	<b>-</b>	<b>-</b>	<b>-</b>	<b>-</b>	<b>-</b>	<b>-</b>	<b>667</b>	<b>3,037</b>	<b>9</b>

**OROMIA**

Zone	Woreda	Primary Cause	Sites Opened Before 2022			Sites Opened During 2022			Sites Opened During 2023			Total HH	Total Indiv	Total Sites
			HH	Indiv.	Sites	HH	Indiv.	Sites	HH	Indiv.	Sites			
Arsi	Degeluna Tijo	Social tension	33	150	1	-	-	-	-	-	-	33	150	1
Arsi	Gololcha Arsi	Social tension	28	94	1	-	-	-	-	-	-	28	94	1
Arsi	Gololcha Arsi	Other climate induced	404	2,116	5	-	-	-	-	-	-	404	2,116	5
Arsi	Merti	Social tension	24	125	1	-	-	-	-	-	-	24	125	1
Arsi	Amigna	Social tension	41	154	1	-	-	-	-	-	-	41	154	1
Arsi	Bele Gesgar	Social tension	30	128	1	-	-	-	-	-	-	30	128	1
Arsi	Hitosa	Social tension	24	89	1	-	-	-	-	-	-	24	89	1
Arsi	Robe	Social tension	157	584	1	-	-	-	-	-	-	157	584	1
Arsi	Shirka	Social tension	156	456	1	-	-	-	-	-	-	156	456	1
Arsi	Sude	Social tension	25	92	1	-	-	-	-	-	-	25	92	1
Arsi	Aseko	Social tension	22	76	1	-	-	-	-	-	-	22	76	1
<b>Arsi Total</b>			<b>944</b>	<b>4,064</b>	<b>15</b>	<b>-</b>	<b>-</b>	<b>-</b>	<b>-</b>	<b>-</b>	<b>-</b>	<b>944</b>	<b>4,064</b>	<b>15</b>
Bale	Meda Welabu	Conflict	770	3,925	3	-	-	-	-	-	-	770	3,925	3
Bale	Delo Mena	Conflict	1,140	5,667	2	-	-	-	-	-	-	1,140	5,667	2
Bale	Gura Damole	Conflict	247	1,058	1	-	-	-	-	-	-	247	1,058	1
<b>Bale Total</b>			<b>2,157</b>	<b>10,650</b>	<b>6</b>	<b>-</b>	<b>-</b>	<b>-</b>	<b>-</b>	<b>-</b>	<b>-</b>	<b>2,157</b>	<b>10,650</b>	<b>6</b>
Borena	Guchi	Conflict	9,110	51,076	12	-	-	-	-	-	-	9,110	51,076	12
Borena	Guchi	Drought	-	-	-	517	2,585	1	448	2,679	5	965	5,264	6
Borena	Moyale	Drought	-	-	-	-	-	-	860	4,410	1	860	4,410	1
Borena	Moyale	Other climate induced	-	-	-	-	-	-	1,235	6,438	1	1,235	6,438	1
Borena	Arero	Conflict	518	3,945	1	-	-	-	-	-	-	518	3,945	1
Borena	Arero	Drought	-	-	-	-	-	-	1,363	7,973	2	1,363	7,973	2
Borena	Wachile	Conflict	1,216	6,225	4	-	-	-	-	-	-	1,216	6,225	4
Borena	Wachile	Drought	-	-	-	-	-	-	1,082	6,313	2	1,082	6,313	2
Borena	Wachile	Other climate induced	-	-	-	-	-	-	288	1,956	1	288	1,956	1
Borena	Dhaas	Conflict	450	2,819	1	-	-	-	-	-	-	450	2,819	1
Borena	Dhaas	Drought	-	-	-	7,512	41,121	3	-	-	-	7,512	41,121	3
Borena	Dhaas	Other climate induced	-	-	-	-	-	-	509	2,231	2	509	2,231	2
Borena	Dire	Drought	-	-	-	4,438	24,937	5	-	-	-	4,438	24,937	5
Borena	Dillo	Conflict	930	5,985	4	-	-	-	-	-	-	930	5,985	4
Borena	Dillo	Drought	-	-	-	316	1,929	2	-	-	-	316	1,929	2
Borena	Dillo	Social tension	203	1,394	1	-	-	-	-	-	-	203	1,394	1
Borena	Elwaye	Drought	-	-	-	785	4,592	3	450	3,042	1	1,235	7,634	4
Borena	Dubuluk	Drought	-	-	-	5,933	30,662	5	-	-	-	5,933	30,662	5
Borena	Miyo	Drought	-	-	-	-	-	-	1,055	6,688	2	1,055	6,688	2
Borena	Miyo	Other climate induced	-	-	-	-	-	-	280	1,540	1	280	1,540	1
<b>Borena Total</b>			<b>12,427</b>	<b>71,444</b>	<b>23</b>	<b>19,501</b>	<b>105,826</b>	<b>19</b>	<b>7,570</b>	<b>43,270</b>	<b>18</b>	<b>39,498</b>	<b>220,540</b>	<b>60</b>
Bunno Bedele	Dedesa	Other	1,287	7,476	2	-	-	-	-	-	-	1,287	7,476	2
<b>Bunno Bedele Total</b>			<b>1,287</b>	<b>7,476</b>	<b>2</b>	<b>-</b>	<b>-</b>	<b>-</b>	<b>-</b>	<b>-</b>	<b>-</b>	<b>1,287</b>	<b>7,476</b>	<b>2</b>
East Bale	Lege Hida	Drought	-	-	-	29	158	1	-	-	-	29	158	1
East Bale	Lege Hida	Social tension	44	208	1	-	-	-	-	-	-	44	208	1
East Bale	Rayitu	Conflict	264	1,445	2	-	-	-	-	-	-	264	1,445	2
East Bale	Ginir	Drought	-	-	-	64	346	1	-	-	-	64	346	1
East Bale	Gololcha Bale	Conflict	33	66	1	-	-	-	-	-	-	33	66	1
East Bale	Dawe Serer	Conflict	901	4,239	3	-	-	-	-	-	-	901	4,239	3
East Bale	Dawe Serer	Drought	-	-	-	510	3,066	1	-	-	-	510	3,066	1
East Bale	Sewena	Conflict	1,053	5,028	2	-	-	-	-	-	-	1,053	5,028	2
East Bale	Sewena	Social tension	36	176	1	-	-	-	-	-	-	36	176	1
<b>East Bale Total</b>			<b>2,331</b>	<b>11,162</b>	<b>10</b>	<b>603</b>	<b>3,570</b>	<b>3</b>	<b>-</b>	<b>-</b>	<b>-</b>	<b>2,934</b>	<b>14,732</b>	<b>13</b>
East Harerge	Babile	Conflict	969	4,533	17	-	-	-	-	-	-	969	4,533	17
East Harerge	Chinaksen	Conflict	6,655	33,817	36	-	-	-	-	-	-	6,655	33,817	36
East Harerge	Fedis	Conflict	3,204	13,328	10	-	-	-	-	-	-	3,204	13,328	10

Zone	Woreda	Primary Cause	Sites Opened Before 2022			Sites Opened During 2022			Sites Opened During 2023			Total HH	Total Indiv	Total Sites
			HH	Indiv.	Sites	HH	Indiv.	Sites	HH	Indiv.	Sites			
East Harerge	Gursum	Conflict	1,374	10,613	23	-	-	-	-	-	-	1,374	10,613	23
East Harerge	Kersa	Conflict	412	1,721	5	-	-	-	-	-	-	412	1,721	5
East Harerge	Kumbi	Conflict	5,551	32,575	4	-	-	-	-	-	-	5,551	32,575	4
East Harerge	Malka Balo	Conflict	473	1,104	6	94	477	2	-	-	-	567	1,581	8
East Harerge	Meyu Muluke	Conflict	1,034	5,185	2	-	-	-	-	-	-	1,034	5,185	2
East Harerge	Midega Tola	Conflict	302	1,364	7	-	-	-	-	-	-	302	1,364	7
East Harerge	Goro Gutu	Conflict	738	3,085	9	-	-	-	-	-	-	738	3,085	9
East Harerge	Kombolcha	Conflict	88	331	3	-	-	-	-	-	-	88	331	3
East Harerge	Bedeno	Conflict	124	527	2	-	-	-	-	-	-	124	527	2
East Harerge	Deder	Conflict	766	2,569	14	-	-	-	-	-	-	766	2,569	14
East Harerge	Garu Muti	Conflict	208	656	6	-	-	-	-	-	-	208	656	6
East Harerge	Girawa	Conflict	152	644	4	-	-	-	-	-	-	152	644	4
East Harerge	Haro Maya	Conflict	130	595	6	-	-	-	-	-	-	130	595	6
East Harerge	Haro Maya	Other	43	194	1	-	-	-	-	-	-	43	194	1
East Harerge	Jarso	Conflict	1,573	7,403	9	-	-	-	-	-	-	1,573	7,403	9
East Harerge	Kurfa Chele	Conflict	54	209	1	-	-	-	-	-	-	54	209	1
East Harerge	Meta	Conflict	376	1,504	6	-	-	-	-	-	-	376	1,504	6
East Harerge	Golo Oda	Drought	4,136	15,488	1	-	-	-	-	-	-	4,136	15,488	1
East Harerge	Awaday Administrative Town	Conflict	98	534	1	-	-	-	-	-	-	98	534	1
East Harerge	Babile Administrative Town	Conflict	142	759	1	-	-	-	-	-	-	142	759	1
East Harerge	Deder Administrative Town	Conflict	970	4,252	8	-	-	-	-	-	-	970	4,252	8
East Harerge	Haro Maya Admin.Town	Conflict	92	386	1	-	-	-	-	-	-	92	386	1
<b>East Harerge Total</b>			<b>29,664</b>	<b>143,376</b>	<b>183</b>	<b>94</b>	<b>477</b>	<b>2</b>	<b>-</b>	<b>-</b>	<b>-</b>	<b>29,758</b>	<b>143,853</b>	<b>185</b>
East Wallaga	Diga	Conflict	631	3,638	8	-	-	-	-	-	-	631	3,638	8
East Wallaga	Sasiga	Conflict	72	417	2	-	-	-	-	-	-	72	417	2
East Wallaga	Gida Ayana	Conflict	5,858	31,766	13	8,454	45,589	18	-	-	-	14,312	77,355	31
East Wallaga	Guto Gida	Conflict	577	3,199	9	-	-	-	-	-	-	577	3,199	9
East Wallaga	Nekemte Town	Conflict	3,404	18,112	27	2,995	12,957	33	-	-	-	6,399	31,069	60
East Wallaga	Gobu Seyo	Conflict	1,236	6,846	4	182	832	1	-	-	-	1,418	7,678	5
East Wallaga	Leqa Dullacha	Conflict	80	408	1	132	671	2	-	-	-	212	1,079	3
East Wallaga	Sibu Sire	Conflict	1,788	9,701	6	-	-	-	-	-	-	1,788	9,701	6
East Wallaga	Wayu Tuka	Conflict	-	-	-	573	2,907	3	-	-	-	573	2,907	3
East Wallaga	Jimma Arjo	Conflict	-	-	-	195	969	1	-	-	-	195	969	1
East Wallaga	Nunu Kumba	Conflict	-	-	-	367	2,362	4	-	-	-	367	2,362	4
<b>East Wallaga Total</b>			<b>13,646</b>	<b>74,087</b>	<b>70</b>	<b>12,898</b>	<b>66,287</b>	<b>62</b>	<b>-</b>	<b>-</b>	<b>-</b>	<b>26,544</b>	<b>140,374</b>	<b>132</b>
Guji	Girja (Harenfema)	Social tension	-	-	-	598	5,332	2	-	-	-	598	5,332	2
Guji	Goro Dola	Drought	-	-	-	4,270	21,350	1	-	-	-	4,270	21,350	1
Guji	Goro Dola	Social tension	3,155	16,280	3	1,630	9,045	1	-	-	-	4,785	25,325	4
Guji	Liben	Drought	-	-	-	1,938	9,954	2	-	-	-	1,938	9,954	2
Guji	Liben	Social tension	2,245	12,858	8	3,010	16,919	4	-	-	-	5,255	29,777	12
Guji	Negele City Administration	Social tension	596	3,124	1	-	-	-	-	-	-	596	3,124	1
Guji	Wadera	Social tension	1,134	6,110	3	-	-	-	-	-	-	1,134	6,110	3
<b>Guji Total</b>			<b>7,130</b>	<b>38,372</b>	<b>15</b>	<b>11,446</b>	<b>62,600</b>	<b>10</b>	<b>-</b>	<b>-</b>	<b>-</b>	<b>18,576</b>	<b>100,972</b>	<b>25</b>
Horo Gudru Wallaga	Horo Buluk	Conflict	-	-	-	1,070	6,023	6	-	-	-	1,070	6,023	6
Horo Gudru Wallaga	Shambu Town	Conflict	-	-	-	6,872	36,473	3	-	-	-	6,872	36,473	3
<b>Horo Gudru Wallaga Total</b>			<b>-</b>	<b>-</b>	<b>-</b>	<b>7,942</b>	<b>42,496</b>	<b>9</b>	<b>-</b>	<b>-</b>	<b>-</b>	<b>7,942</b>	<b>42,496</b>	<b>9</b>
Jimma	Botor Tolley	Drought	750	3,976	4	-	-	-	-	-	-	750	3,976	4
Jimma	Botor Tolley	Other climate induced	481	2,433	2	-	-	-	-	-	-	481	2,433	2
Jimma	Kersa	Other	855	4,495	7	-	-	-	-	-	-	855	4,495	7
Jimma	Sigmo	Conflict	27	75	1	-	-	-	-	-	-	27	75	1
Jimma	Gera	Other climate induced	220	920	2	-	-	-	-	-	-	220	920	2
Jimma	Gumay	Conflict	48	96	1	-	-	-	-	-	-	48	96	1
Jimma	Jimma Town	Other	612	2,828	2	-	-	-	-	-	-	612	2,828	2
Jimma	Setema	Conflict	40	70	1	-	-	-	-	-	-	40	70	1
<b>Jimma Total</b>			<b>3,033</b>	<b>14,893</b>	<b>20</b>	<b>-</b>	<b>-</b>	<b>-</b>	<b>-</b>	<b>-</b>	<b>-</b>	<b>3,033</b>	<b>14,893</b>	<b>20</b>

Zone	Woreda	Primary Cause	Sites Opened Before 2022			Sites Opened During 2022			Sites Opened During 2023			Total HH	Total Indiv	Total Sites
			HH	Indiv.	Sites	HH	Indiv.	Sites	HH	Indiv.	Sites			
Kellem Wallaga	Dale Sadi	Conflict	182	962	2	-	-	-	-	-	-	182	962	2
Kellem Wallaga	Chenka Sadi	Conflict	130	749	2	-	-	-	-	-	-	130	749	2
Kellem Wallaga	Dambi Dolo	Conflict	2,575	12,861	10	1,069	4,985	6	482	2,657	1	4,126	20,503	17
Kellem Wallaga	Hawa Galan	Conflict	814	4,137	6	-	-	-	-	-	-	814	4,137	6
<b>Kellem Wallaga Total</b>			<b>3,701</b>	<b>18,709</b>	<b>20</b>	<b>1,069</b>	<b>4,985</b>	<b>6</b>	<b>482</b>	<b>2,657</b>	<b>1</b>	<b>5,252</b>	<b>26,351</b>	<b>27</b>
North Shewa (R4)	Kuyu	Conflict	415	2,931	4	491	3,260	5	-	-	-	906	6,191	9
North Shewa (R4)	Wara Jarso	Conflict	2,038	9,110	7	-	-	-	-	-	-	2,038	9,110	7
North Shewa (R4)	Degem	Conflict	492	2,058	3	377	1,278	3	-	-	-	869	3,336	6
North Shewa (R4)	Fiche Town	Conflict	-	-	-	134	718	3	-	-	-	134	718	3
<b>North Shewa (R4) Total</b>			<b>2,945</b>	<b>14,099</b>	<b>14</b>	<b>1,002</b>	<b>5,256</b>	<b>11</b>	<b>-</b>	<b>-</b>	<b>-</b>	<b>3,947</b>	<b>19,355</b>	<b>25</b>
South West Shewa	Waliso	Conflict	-	-	-	66	236	1	-	-	-	66	236	1
South West Shewa	Waliso Town	Conflict	31	114	1	-	-	-	-	-	-	31	114	1
<b>South West Shewa Total</b>			<b>31</b>	<b>114</b>	<b>1</b>	<b>66</b>	<b>236</b>	<b>1</b>	<b>-</b>	<b>-</b>	<b>-</b>	<b>97</b>	<b>350</b>	<b>2</b>
West Arsi	Gedeb Asasa	Conflict	52	229	1	-	-	-	-	-	-	52	229	1
West Arsi	Shashemene Zuria	Other climate induced	54	266	2	-	-	-	-	-	-	54	266	2
West Arsi	Siraro	Conflict	3,317	17,450	9	-	-	-	-	-	-	3,317	17,450	9
West Arsi	Adaba	Conflict	71	344	1	-	-	-	-	-	-	71	344	1
West Arsi	Dodola	Conflict	41	169	1	-	-	-	-	-	-	41	169	1
West Arsi	Bishan Guracha City Admin.	Other climate induced	21	109	1	-	-	-	-	-	-	21	109	1
<b>West Arsi Total</b>			<b>3,556</b>	<b>18,567</b>	<b>15</b>	<b>-</b>	<b>-</b>	<b>-</b>	<b>-</b>	<b>-</b>	<b>-</b>	<b>3,556</b>	<b>18,567</b>	<b>15</b>
West Guji	Dugeda Dawa	Drought	8,944	54,015	14	3,127	21,045	3	-	-	-	12,071	75,060	17
West Guji	Dugeda Dawa	Social tension	1,010	6,805	3	113	675	1	1,301	7,386	6	2,424	14,866	10
West Guji	Dugeda Dawa	Other climate induced	-	-	-	-	-	-	145	758	3	145	758	3
West Guji	Galana	Drought	-	-	-	293	1,465	1	-	-	-	293	1,465	1
West Guji	Galana	Social tension	1,227	5,584	1	589	4,003	2	-	-	-	1,816	9,587	3
West Guji	Suro Barguda	Social tension	2,469	12,675	7	2,068	11,399	6	450	2,973	1	4,987	27,047	14
West Guji	Abaya	Other	276	2,140	1	-	-	-	-	-	-	276	2,140	1
West Guji	Abaya	Social tension	104	589	1	-	-	-	533	3,426	3	637	4,015	4
West Guji	Bule Hora	Drought	100	637	1	274	1,835	4	-	-	-	374	2,472	5
West Guji	Bule Hora	Social tension	3,334	22,381	6	917	5,365	6	1,225	8,106	7	5,476	35,852	19
West Guji	Kerca Town	Social tension	1,854	11,004	2	-	-	-	-	-	-	1,854	11,004	2
West Guji	Kerca	Social tension	-	-	-	2,990	16,601	29	35	179	1	3,025	16,780	30
West Guji	Kerca	Other climate induced	-	-	-	-	-	-	1,644	9,326	21	1,644	9,326	21
West Guji	Bule Hora Town	Social tension	3,922	25,909	8	1,700	10,781	11	-	-	-	5,622	36,690	19
<b>West Guji Total</b>			<b>23,240</b>	<b>141,739</b>	<b>44</b>	<b>12,071</b>	<b>73,169</b>	<b>63</b>	<b>5,333</b>	<b>32,154</b>	<b>42</b>	<b>40,644</b>	<b>247,062</b>	<b>149</b>
West Harerge	Bordode	Conflict	1,656	8,013	8	132	663	1	-	-	-	1,788	8,676	9
West Harerge	Bordode	Drought	255	1,279	2	-	-	-	-	-	-	255	1,279	2
West Harerge	Doba	Conflict	154	807	3	-	-	-	-	-	-	154	807	3
West Harerge	Mieso	Conflict	1,427	7,528	8	-	-	-	-	-	-	1,427	7,528	8
West Harerge	Daro Lebu	Conflict	590	3,086	3	-	-	-	-	-	-	590	3,086	3
West Harerge	Gemechis	Conflict	33	84	1	-	-	-	-	-	-	33	84	1
West Harerge	Goba Koricha	Other climate induced	-	-	-	-	-	-	96	364	1	96	364	1
West Harerge	Hawi Gudina	Conflict	70	350	1	-	-	-	-	-	-	70	350	1
West Harerge	Shanan Dhuuggo	Conflict	26	85	1	-	-	-	-	-	-	26	85	1
West Harerge	Chiro Town	Conflict	43	75	1	-	-	-	-	-	-	43	75	1
West Harerge	Gelemso Administrative Town	Conflict	87	302	1	-	-	-	-	-	-	87	302	1
West Harerge	Hirna Administrative Town	Conflict	151	454	2	-	-	-	-	-	-	151	454	2
West Harerge	Machara Administrative Town	Conflict	44	184	1	-	-	-	-	-	-	44	184	1
<b>West Harerge Total</b>			<b>4,536</b>	<b>22,247</b>	<b>32</b>	<b>132</b>	<b>663</b>	<b>1</b>	<b>96</b>	<b>364</b>	<b>1</b>	<b>4,764</b>	<b>23,274</b>	<b>34</b>
West Shewa	Dendi	Conflict	34	84	1	-	-	-	-	-	-	34	84	1
West Shewa	Ambo Town	Conflict	220	1,015	2	-	-	-	-	-	-	220	1,015	2
West Shewa	Adda Berga	Conflict	701	3,644	4	-	-	-	-	-	-	701	3,644	4
West Shewa	Bako Tibe	Conflict	1,009	3,489	6	587	2,547	4	-	-	-	1,596	6,036	10
West Shewa	Liben Jawi	Conflict	70	347	3	-	-	-	-	-	-	70	347	3
West Shewa	Toke Kutaye	Conflict	-	-	-	120	713	2	-	-	-	120	713	2
West Shewa	Cheliya	Conflict	-	-	-	64	271	1	-	-	-	64	271	1

Zone	Woreda	Primary Cause	Sites Opened Before 2022			Sites Opened During 2022			Sites Opened During 2023			Total HH	Total Indiv	Total Sites
			HH	Indiv.	Sites	HH	Indiv.	Sites	HH	Indiv.	Sites			
West Shewa	Ejere (Addis Alem)	Conflict	-	-	-	101	507	1	-	-	-	101	507	1
West Shewa	Ilu Galan	Conflict	-	-	-	295	1,454	2	-	-	-	295	1,454	2
<b>West Shewa Total</b>			<b>2,034</b>	<b>8,579</b>	<b>16</b>	<b>1,167</b>	<b>5,492</b>	<b>10</b>	<b>-</b>	<b>-</b>	<b>-</b>	<b>3,201</b>	<b>14,071</b>	<b>26</b>
West Wallaga	Lalo Asabi	Conflict	112	636	2	-	-	-	-	-	-	112	636	2
West Wallaga	Gimbi	Conflict	247	1,295	1	100	503	1	-	-	-	347	1,798	2
West Wallaga	Gimbi Town	Conflict	838	4,763	6	1,296	6,728	7	-	-	-	2,134	11,491	13
West Wallaga	Ayira	Conflict	76	397	1	-	-	-	-	-	-	76	397	1
West Wallaga	Guliso	Conflict	173	914	2	36	184	1	-	-	-	209	1,098	3
<b>West Wallaga Total</b>			<b>1,446</b>	<b>8,005</b>	<b>12</b>	<b>1,432</b>	<b>7,415</b>	<b>9</b>	<b>-</b>	<b>-</b>	<b>-</b>	<b>2,878</b>	<b>15,420</b>	<b>21</b>
<b>Grand Total</b>			<b>114,108</b>	<b>607,583</b>	<b>498</b>	<b>69,423</b>	<b>378,472</b>	<b>206</b>	<b>13,481</b>	<b>78,445</b>	<b>62</b>	<b>197,012</b>	<b>1,064,500</b>	<b>766</b>

## SIDAMA

Zone	Woreda	Primary Cause	Sites Opened Before 2022			Sites Opened During 2022			Sites Opened During 2023			Total HH	Total Indiv	Total Sites
			HH	Indiv.	Sites	HH	Indiv.	Sites	HH	Indiv.	Sites			
Zone I	Belate Zuria	Conflict	4,859	28,874	20	-	-	-	-	-	-	4,859	28,874	20
Zone I	Hawassa Zuria	Conflict	619	2,900	11	-	-	-	-	-	-	619	2,900	11
Zone I	Hawassa Zuria	Other climate induced	113	546	2	-	-	-	-	-	-	113	546	2
Zone I	Bensa	Conflict	465	2,325	1	-	-	-	-	-	-	465	2,325	1
Zone I	Bona Zuria	Conflict	21	143	1	-	-	-	-	-	-	21	143	1
Zone I	Boricha	Conflict	84	313	3	-	-	-	-	-	-	84	313	3
Zone I	Chiri	Conflict	464	2,569	1	991	6,476	5	-	-	-	1,455	9,045	6
Zone I	Hawela	Conflict	83	377	2	-	-	-	-	-	-	83	377	2
Zone I	Hula	Social tension	72	456	2	-	-	-	-	-	-	72	456	2
Zone I	Wonosho	Conflict	151	872	5	-	-	-	-	-	-	151	872	5
Zone I	Aleta Wondo	Social tension	63	389	3	-	-	-	-	-	-	63	389	3
Zone I	Bura	Conflict	-	-	-	170	957	1	-	-	-	170	957	1
Zone I	Teticha	Social tension	23	141	1	-	-	-	-	-	-	23	141	1
Zone I	Aleta Chuko	Social tension	113	800	5	-	-	-	-	-	-	113	800	5
<b>Zone I Total</b>			<b>7,130</b>	<b>40,705</b>	<b>57</b>	<b>1,161</b>	<b>7,433</b>	<b>6</b>	<b>-</b>	<b>-</b>	<b>-</b>	<b>8,291</b>	<b>48,138</b>	<b>63</b>
<b>Grand Total</b>			<b>7,130</b>	<b>40,705</b>	<b>57</b>	<b>1,161</b>	<b>7,433</b>	<b>6</b>	<b>-</b>	<b>-</b>	<b>-</b>	<b>8,291</b>	<b>48,138</b>	<b>63</b>

## SNNP

Zone	Woreda	Primary Cause	Sites Opened Before 2022			Sites Opened During 2022			Sites Opened During 2023			Total HH	Total Indiv	Total Sites
			HH	Indiv.	Sites	HH	Indiv.	Sites	HH	Indiv.	Sites			
Alle Special Woreda	Alle Special Woreda	Social tension	-	-	-	41	304	1	-	-	-	41	304	1
<b>Alle Special Woreda Total</b>			<b>-</b>	<b>-</b>	<b>-</b>	<b>41</b>	<b>304</b>	<b>1</b>	<b>-</b>	<b>-</b>	<b>-</b>	<b>41</b>	<b>304</b>	<b>1</b>
Amaro Special Woreda	Amaro Special Woreda	Social tension	8,460	43,686	18	-	-	-	-	-	-	8,460	43,686	18
<b>Amaro Special Woreda Total</b>			<b>8,460</b>	<b>43,686</b>	<b>18</b>	<b>-</b>	<b>-</b>	<b>-</b>	<b>-</b>	<b>-</b>	<b>-</b>	<b>8,460</b>	<b>43,686</b>	<b>18</b>
Basketo	Basketo SP Woreda	Conflict	76	454	3	-	-	-	-	-	-	76	454	3
<b>Basketo Total</b>			<b>76</b>	<b>454</b>	<b>3</b>	<b>-</b>	<b>-</b>	<b>-</b>	<b>-</b>	<b>-</b>	<b>-</b>	<b>76</b>	<b>454</b>	<b>3</b>
Burji Special Woreda	Burji	Social tension	219	1,647	2	-	-	-	-	-	-	219	1,647	2
<b>Burji Special Woreda Total</b>			<b>219</b>	<b>1,647</b>	<b>2</b>	<b>-</b>	<b>-</b>	<b>-</b>	<b>-</b>	<b>-</b>	<b>-</b>	<b>219</b>	<b>1,647</b>	<b>2</b>
Derashe Special Woreda	Derashe Special Woreda	Conflict	-	-	-	519	3,295	2	-	-	-	519	3,295	2
Derashe Special Woreda	Derashe Special Woreda	Social tension	570	3,405	2	-	-	-	-	-	-	570	3,405	2
<b>Derashe Special Woreda Total</b>			<b>570</b>	<b>3,405</b>	<b>2</b>	<b>519</b>	<b>3,295</b>	<b>2</b>	<b>-</b>	<b>-</b>	<b>-</b>	<b>1,089</b>	<b>6,700</b>	<b>4</b>

Zone	Woreda	Primary Cause	Sites Opened Before 2022			Sites Opened During 2022			Sites Opened During 2023			Total HH	Total Indiv	Total Sites
			HH	Indiv.	Sites	HH	Indiv.	Sites	HH	Indiv.	Sites			
Gamo	Mirab Abaya	Other climate induced	287	1,864	1	-	-	-	-	-	-	287	1,864	1
Gamo	Gerese	Other climate induced	49	309	2	-	-	-	-	-	-	49	309	2
<b>Gamo Total</b>			<b>336</b>	<b>2,173</b>	<b>3</b>	<b>-</b>	<b>-</b>	<b>-</b>	<b>-</b>	<b>-</b>	<b>-</b>	<b>336</b>	<b>2,173</b>	<b>3</b>
Gofa	Demba Gofa	Other climate induced	45	270	1	-	-	-	-	-	-	45	270	1
Gofa	Geze Gofa	Other climate induced	300	1,851	5	-	-	-	-	-	-	300	1,851	5
Gofa	Melo Koza	Other climate induced	1,372	8,240	10	123	800	1	-	-	-	1,495	9,040	11
<b>Gofa Total</b>			<b>1,717</b>	<b>10,361</b>	<b>16</b>	<b>123</b>	<b>800</b>	<b>1</b>	<b>-</b>	<b>-</b>	<b>-</b>	<b>1,840</b>	<b>11,161</b>	<b>17</b>
Gurage	Meskan	Conflict	792	5,428	9	-	-	-	-	-	-	792	5,428	9
Gurage	Abeshege	Conflict	173	1,059	2	186	1,140	2	-	-	-	359	2,199	4
<b>Gurage Total</b>			<b>965</b>	<b>6,487</b>	<b>11</b>	<b>186</b>	<b>1,140</b>	<b>2</b>	<b>-</b>	<b>-</b>	<b>-</b>	<b>1,151</b>	<b>7,627</b>	<b>13</b>
Hadiya	Dune	Conflict	833	5,771	21	-	-	-	-	-	-	833	5,771	21
Hadiya	Misrak Badawacho	Conflict	533	3,670	15	-	-	-	-	-	-	533	3,670	15
Hadiya	Misrak Badawacho	Other climate induced	-	-	-	28	169	1	-	-	-	28	169	1
Hadiya	Anlemmo	Conflict	72	284	2	-	-	-	-	-	-	72	284	2
Hadiya	Shashogo	Conflict	371	2,519	10	-	-	-	-	-	-	371	2,519	10
Hadiya	Shashogo	Other climate induced	564	4,047	4	-	-	-	-	-	-	564	4,047	4
Hadiya	Soro	Conflict	428	2,980	11	-	-	-	-	-	-	428	2,980	11
Hadiya	Mierab Badawacho	Conflict	115	631	4	-	-	-	-	-	-	115	631	4
Hadiya	Gembora	Conflict	52	356	1	-	-	-	-	-	-	52	356	1
Hadiya	Lemo	Conflict	483	2,372	5	-	-	-	-	-	-	483	2,372	5
Hadiya	Mirab Soro	Conflict	134	817	4	-	-	-	-	-	-	134	817	4
Hadiya	Fonko City Administration	Conflict	320	1,478	5	-	-	-	-	-	-	320	1,478	5
<b>Hadiya Total</b>			<b>3,905</b>	<b>24,925</b>	<b>82</b>	<b>28</b>	<b>169</b>	<b>1</b>	<b>-</b>	<b>-</b>	<b>-</b>	<b>3,933</b>	<b>25,094</b>	<b>83</b>
Kembata Tembaro	Kediada Gamella	Conflict	331	2,443	10	-	-	-	-	-	-	331	2,443	10
Kembata Tembaro	Anigacha	Conflict	685	5,254	16	-	-	-	-	-	-	685	5,254	16
Kembata Tembaro	Daniboya	Conflict	199	1,564	6	-	-	-	-	-	-	199	1,564	6
Kembata Tembaro	Kacha Bira	Conflict	125	827	3	-	-	-	-	-	-	125	827	3
Kembata Tembaro	Doya Gena	Conflict	148	872	4	-	-	-	-	-	-	148	872	4
Kembata Tembaro	Hadero Tunito	Conflict	205	1,407	5	-	-	-	-	-	-	205	1,407	5
Kembata Tembaro	Tembaro	Conflict	67	467	3	-	-	-	-	-	-	67	467	3
Kembata Tembaro	Adilo	Conflict	66	350	2	-	-	-	-	-	-	66	350	2
<b>Kembata Tembaro Total</b>			<b>1,826</b>	<b>13,184</b>	<b>49</b>	<b>-</b>	<b>-</b>	<b>-</b>	<b>-</b>	<b>-</b>	<b>-</b>	<b>1,826</b>	<b>13,184</b>	<b>49</b>
Konso	Karat Zuria	Social tension	516	3,335	2	850	5,681	11	-	-	-	1,366	9,016	13
Konso	Segen Zuria	Social tension	234	1,459	3	446	2,724	6	29	160	1	709	4,343	10
Konso	Kolme Cluster	Social tension	-	-	-	448	3,211	6	-	-	-	448	3,211	6
Konso	Kena	Social tension	165	997	2	-	-	-	-	-	-	165	997	2
Konso	Karat Ketema	Social tension	-	-	-	106	670	1	-	-	-	106	670	1
<b>Konso Total</b>			<b>915</b>	<b>5,791</b>	<b>7</b>	<b>1,850</b>	<b>12,286</b>	<b>24</b>	<b>29</b>	<b>160</b>	<b>1</b>	<b>2,794</b>	<b>18,237</b>	<b>32</b>
Silti	Mierab Azenet Berbere	Conflict	155	554	2	-	-	-	-	-	-	155	554	2
Silti	Misrak Azenet Berbere	Conflict	33	200	1	-	-	-	-	-	-	33	200	1
Silti	Sankura	Conflict	74	361	2	-	-	-	-	-	-	74	361	2
Silti	Wilbareg	Conflict	224	792	4	-	-	-	-	-	-	224	792	4
Silti	Worabe Ketema Astedader	Conflict	233	939	4	-	-	-	-	-	-	233	939	4
Silti	Alicho Woriro	Conflict	108	618	2	-	-	-	-	-	-	108	618	2
Silti	Kibet Town Administration	Conflict	31	376	1	21	119	1	-	-	-	52	495	2
<b>Silti Total</b>			<b>858</b>	<b>3,840</b>	<b>16</b>	<b>21</b>	<b>119</b>	<b>1</b>	<b>-</b>	<b>-</b>	<b>-</b>	<b>879</b>	<b>3,959</b>	<b>17</b>
South Omo	Bena Tsemay	Conflict	-	-	-	196	899	1	-	-	-	196	899	1
South Omo	Dasenech (Kuraz)	Other climate induced	11,641	56,358	26	-	-	-	-	-	-	11,641	56,358	26
South Omo	South Ari (Bako Gazer)	Conflict	-	-	-	282	1,291	3	-	-	-	282	1,291	3
<b>South Omo Total</b>			<b>11,641</b>	<b>56,358</b>	<b>26</b>	<b>478</b>	<b>2,190</b>	<b>4</b>	<b>-</b>	<b>-</b>	<b>-</b>	<b>12,119</b>	<b>58,548</b>	<b>30</b>
Wolayita	Diguna Fango	Conflict	405	2,452	2	103	668	2	-	-	-	508	3,120	4
Wolayita	Kindo Dida	Other climate induced	595	4,264	7	-	-	-	-	-	-	595	4,264	7
Wolayita	Kindo Koysa	Other climate induced	273	1,631	5	-	-	-	-	-	-	273	1,631	5



Zone	Woreda	Primary Cause	Sites Opened Before 2022			Sites Opened During 2022			Sites Opened During 2023			Total HH	Total Indiv	Total Sites
			HH	Indiv.	Sites	HH	Indiv.	Sites	HH	Indiv.	Sites			
Wolayita	Abela Abaya	Other climate induced	600	3,785	4	205	1,260	2	48	327	1	853	5,372	7
Wolayita	Damot Sore	Other climate induced	110	770	2	-	-	-	-	-	-	110	770	2
Wolayita	Damot Weydie	Other climate induced	178	1,261	4	-	-	-	-	-	-	178	1,261	4
Wolayita	Kawo Koyssha	Other climate induced	90	576	2	-	-	-	-	-	-	90	576	2
Wolayita	Ofa	Conflict	53	349	2	-	-	-	-	-	-	53	349	2
Wolayita	Damot Pulasa	Conflict	86	516	2	74	444	1	-	-	-	160	960	3
<b>Wolayita Total</b>			<b>2,390</b>	<b>15,604</b>	<b>30</b>	<b>382</b>	<b>2,372</b>	<b>5</b>	<b>48</b>	<b>327</b>	<b>1</b>	<b>2,820</b>	<b>18,303</b>	<b>36</b>
Yem	Yem Special Woreda	Other climate induced	66	301	1	-	-	-	-	-	-	66	301	1
<b>Yem Total</b>			<b>66</b>	<b>301</b>	<b>1</b>	<b>-</b>	<b>-</b>	<b>-</b>	<b>-</b>	<b>-</b>	<b>-</b>	<b>66</b>	<b>301</b>	<b>1</b>
<b>Grand Total</b>			<b>33,944</b>	<b>188,216</b>	<b>266</b>	<b>3,628</b>	<b>22,675</b>	<b>41</b>	<b>77</b>	<b>487</b>	<b>2</b>	<b>37,649</b>	<b>211,378</b>	<b>309</b>

## SOMALI

Zone	Woreda	Primary Cause	Sites Opened Before 2022			Sites Opened During 2022			Sites Opened During 2023			Total HH	Total Indiv	Total Sites
			HH	Indiv.	Sites	HH	Indiv.	Sites	HH	Indiv.	Sites			
Afdar	Chereti/Weyib	Drought	319	1,915	1	-	-	-	-	-	-	319	1,915	1
Afdar	Chereti/Weyib	Other climate induced	876	5,367	1	-	-	-	320	1,846	1	1,196	7,213	2
Afdar	Dolobay	Drought	2,544	15,215	4	-	-	-	-	-	-	2,544	15,215	4
Afdar	Dolobay	Other climate induced	507	3,042	1	-	-	-	331	1,986	1	838	5,028	2
Afdar	Hargele	Conflict	-	-	-	-	-	-	267	1,606	1	267	1,606	1
Afdar	Hargele	Drought	2,185	12,890	4	2,236	13,625	3	-	-	-	4,421	26,515	7
Afdar	Raso	Conflict	1,338	8,047	2	-	-	-	-	-	-	1,338	8,047	2
Afdar	Raso	Drought	332	1,965	1	250	1,463	1	-	-	-	582	3,428	2
Afdar	Bare	Drought	4,848	29,006	7	430	2,525	1	-	-	-	5,278	31,531	8
Afdar	God God	Drought	2,239	13,067	3	1,190	7,147	2	-	-	-	3,429	20,214	5
Afdar	Qoohle	Drought	6,028	35,991	7	2,893	17,278	4	-	-	-	8,921	53,269	11
Afdar	Serer/Elkere	Conflict	490	2,939	1	-	-	-	-	-	-	490	2,939	1
Afdar	Serer/Elkere	Drought	-	-	-	2,030	11,964	3	-	-	-	2,030	11,964	3
Afdar	West Imi	Conflict	180	1,051	1	-	-	-	-	-	-	180	1,051	1
Afdar	West Imi	Other climate induced	1,463	8,673	3	-	-	-	-	-	-	1,463	8,673	3
<b>Afdar Total</b>			<b>23,349</b>	<b>139,168</b>	<b>36</b>	<b>9,029</b>	<b>54,002</b>	<b>14</b>	<b>918</b>	<b>5,438</b>	<b>3</b>	<b>33,296</b>	<b>198,608</b>	<b>53</b>
Dawa	Hudet	Conflict	10,292	60,433	20	-	-	-	-	-	-	10,292	60,433	20
Dawa	Hudet	Drought	-	-	-	1,458	8,516	11	-	-	-	1,458	8,516	11
Dawa	Moyale	Conflict	11,384	68,515	9	-	-	-	-	-	-	11,384	68,515	9
Dawa	Moyale	Drought	2,697	16,191	7	4,618	27,435	16	-	-	-	7,315	43,626	23
Dawa	Mubarak	Conflict	560	3,238	2	-	-	-	-	-	-	560	3,238	2
Dawa	Mubarak	Drought	1,180	6,856	3	187	1,388	1	-	-	-	1,367	8,244	4
Dawa	Qadhahumo	Conflict	821	4,762	3	-	-	-	-	-	-	821	4,762	3
Dawa	Qadhahumo	Drought	1,853	10,962	8	313	1,852	3	-	-	-	2,166	12,814	11
<b>Dawa Total</b>			<b>28,787</b>	<b>170,957</b>	<b>52</b>	<b>6,576</b>	<b>39,191</b>	<b>31</b>	<b>-</b>	<b>-</b>	<b>-</b>	<b>35,363</b>	<b>210,148</b>	<b>83</b>
Doolo	Boh	Drought	514	2,749	5	43	205	1	-	-	-	557	2,954	6
Doolo	Danod	Drought	998	5,108	5	-	-	-	-	-	-	998	5,108	5
Doolo	Daratole	Drought	239	1,192	4	-	-	-	-	-	-	239	1,192	4
Doolo	Gal Hamer	Drought	94	442	1	-	-	-	-	-	-	94	442	1
Doolo	Lahel Yu'Ub	Conflict	240	1,408	1	-	-	-	-	-	-	240	1,408	1
Doolo	Lahel Yu'Ub	Drought	689	4,043	3	-	-	-	-	-	-	689	4,043	3
Doolo	Warder	Drought	1,588	9,184	6	-	-	-	-	-	-	1,588	9,184	6
Doolo	Geladi	Drought	1,158	6,135	5	-	-	-	-	-	-	1,158	6,135	5
<b>Doolo Total</b>			<b>5,520</b>	<b>30,261</b>	<b>30</b>	<b>43</b>	<b>205</b>	<b>1</b>	<b>-</b>	<b>-</b>	<b>-</b>	<b>5,563</b>	<b>30,466</b>	<b>31</b>
Erer	Lagahida	Conflict	2,047	12,283	6	-	-	-	-	-	-	2,047	12,283	6
Erer	Lagahida	Drought	270	1,621	1	310	1,860	1	-	-	-	580	3,481	2

Zone	Woreda	Primary Cause	Sites Opened Before 2022			Sites Opened During 2022			Sites Opened During 2023			Total HH	Total Indiv	Total Sites
			HH	Indiv.	Sites	HH	Indiv.	Sites	HH	Indiv.	Sites			
Erer	Mayamuluqo	Conflict	1,399	8,391	4	-	-	-	-	-	-	1,399	8,391	4
Erer	Salahad	Conflict	1,714	10,254	8	-	-	-	-	-	-	1,714	10,254	8
Erer	Salahad	Drought	-	-	-	725	4,351	2	-	-	-	725	4,351	2
Erer	Qubi	Conflict	1,191	7,144	6	236	1,417	1	-	-	-	1,427	8,561	7
Erer	Qubi	Drought	-	-	-	150	908	1	-	-	-	150	908	1
Erer	Wangay	Conflict	137	823	2	-	-	-	-	-	-	137	823	2
<b>Erer Total</b>			<b>6,758</b>	<b>40,516</b>	<b>27</b>	<b>1,421</b>	<b>8,536</b>	<b>5</b>	<b>-</b>	<b>-</b>	<b>-</b>	<b>8,179</b>	<b>49,052</b>	<b>32</b>
Fafan	Babile	Conflict	19,567	117,414	15	-	-	-	-	-	-	19,567	117,414	15
Fafan	Gursum	Conflict	1,255	7,532	6	-	-	-	-	-	-	1,255	7,532	6
Fafan	Hareshen	Drought	95	608	1	-	-	-	-	-	-	95	608	1
Fafan	Tuliguled	Conflict	4,285	25,634	4	705	4,231	3	-	-	-	4,990	29,865	7
Fafan	Jijiga	Conflict	303	1,888	3	-	-	-	-	-	-	303	1,888	3
Fafan	Jijiga City Administration	Conflict	180	1,080	1	-	-	-	-	-	-	180	1,080	1
Fafan	Gofjano	Drought	-	-	-	525	3,157	2	-	-	-	525	3,157	2
Fafan	Tog-Wajale	Drought	-	-	-	93	558	1	-	-	-	93	558	1
<b>Fafan Total</b>			<b>25,685</b>	<b>154,156</b>	<b>30</b>	<b>1,323</b>	<b>7,946</b>	<b>6</b>	<b>-</b>	<b>-</b>	<b>-</b>	<b>27,008</b>	<b>162,102</b>	<b>36</b>
Jarar	Aware	Drought	784	4,778	2	-	-	-	-	-	-	784	4,778	2
Jarar	Daror	Drought	471	2,850	3	-	-	-	-	-	-	471	2,850	3
Jarar	Dig	Drought	269	1,647	1	-	-	-	-	-	-	269	1,647	1
Jarar	Gashamo	Drought	2,469	14,909	5	-	-	-	-	-	-	2,469	14,909	5
Jarar	Gunagado	Drought	481	2,916	1	-	-	-	-	-	-	481	2,916	1
Jarar	Bi'ilbur	Drought	220	1,409	1	40	248	1	-	-	-	260	1,657	2
Jarar	Degehabur	Conflict	46	279	1	-	-	-	-	-	-	46	279	1
Jarar	Degehabur	Drought	245	1,489	1	255	1,559	2	-	-	-	500	3,048	3
<b>Jarar Total</b>			<b>4,985</b>	<b>30,277</b>	<b>15</b>	<b>295</b>	<b>1,807</b>	<b>3</b>	<b>-</b>	<b>-</b>	<b>-</b>	<b>5,280</b>	<b>32,084</b>	<b>18</b>
Korahe	Bodaley	Drought	82	487	1	-	-	-	-	-	-	82	487	1
Korahe	El-ogaden	Conflict	63	377	1	-	-	-	-	-	-	63	377	1
Korahe	El-ogaden	Drought	260	1,558	2	-	-	-	-	-	-	260	1,558	2
Korahe	Goglo	Drought	475	2,800	4	-	-	-	-	-	-	475	2,800	4
Korahe	Kebridehar	Drought	532	3,145	5	160	960	1	-	-	-	692	4,105	6
Korahe	Kebridehar	Other climate induced	516	3,064	1	-	-	-	-	-	-	516	3,064	1
Korahe	Marsin	Drought	503	2,268	2	-	-	-	-	-	-	503	2,268	2
Korahe	Shilabo	Conflict	155	930	1	-	-	-	-	-	-	155	930	1
Korahe	Shilabo	Drought	398	2,389	3	-	-	-	-	-	-	398	2,389	3
Korahe	Higlolay	Drought	108	646	1	-	-	-	-	-	-	108	646	1
Korahe	Laasdhankayre	Drought	110	645	1	150	888	1	-	-	-	260	1,533	2
Korahe	Shekosh	Drought	-	-	-	150	899	1	-	-	-	150	899	1
Korahe	Dobaweyn	Drought	409	2,454	2	-	-	-	-	-	-	409	2,454	2
Korahe	Dobaweyn	Other climate induced	94	561	2	-	-	-	-	-	-	94	561	2
<b>Korahe Total</b>			<b>3,705</b>	<b>21,324</b>	<b>26</b>	<b>460</b>	<b>2,747</b>	<b>3</b>	<b>-</b>	<b>-</b>	<b>-</b>	<b>4,165</b>	<b>24,071</b>	<b>29</b>
Liben	Deka Seftu	Conflict	7,085	42,457	45	948	5,673	7	-	-	-	8,033	48,130	52
Liben	Deka Seftu	Drought	-	-	-	73	435	1	-	-	-	73	435	1
Liben	Dolo Odo	Conflict	450	2,700	1	-	-	-	-	-	-	450	2,700	1
Liben	Dolo Odo	Drought	1,410	8,467	3	-	-	-	-	-	-	1,410	8,467	3
Liben	Filtu	Conflict	6,760	40,394	28	-	-	-	-	-	-	6,760	40,394	28
Liben	Filtu	Drought	142	852	2	2,770	16,606	22	-	-	-	2,912	17,458	24
Liben	Filtu	Other climate induced	150	899	2	-	-	-	-	-	-	150	899	2
Liben	Karsa Dulla	Conflict	4,733	28,238	13	676	4,029	8	150	900	1	5,559	33,167	22
Liben	Karsa Dulla	Drought	-	-	-	305	1,825	2	-	-	-	305	1,825	2
Liben	Goro Baqaqsa	Conflict	1,572	9,424	2	326	1,992	1	-	-	-	1,898	11,416	3
Liben	Goro Baqaqsa	Drought	886	5,234	2	1,656	9,881	3	-	-	-	2,542	15,115	5
Liben	Guradamole	Conflict	12,079	72,072	7	5,931	34,903	8	-	-	-	18,010	106,975	15
Liben	Guradamole	Drought	350	2,023	1	1,742	10,339	4	-	-	-	2,092	12,362	5
Liben	Boqolmaayo	Drought	-	-	-	640	3,826	4	-	-	-	640	3,826	4
Liben	Boqolmaayo	Other climate induced	2,178	13,068	1	-	-	-	-	-	-	2,178	13,068	1
<b>Liben Total</b>			<b>37,795</b>	<b>225,828</b>	<b>107</b>	<b>15,067</b>	<b>89,509</b>	<b>60</b>	<b>150</b>	<b>900</b>	<b>1</b>	<b>53,012</b>	<b>316,237</b>	<b>168</b>

Zone	Woreda	Primary Cause	Sites Opened Before 2022			Sites Opened During 2022			Sites Opened During 2023			Total HH	Total Indiv	Total Sites
			HH	Indiv.	Sites	HH	Indiv.	Sites	HH	Indiv.	Sites			
Nogob	Dihun	Drought	1,266	7,560	6	-	-	-	-	-	-	1,266	7,560	6
Nogob	Elwayne	Drought	1,036	6,179	7	-	-	-	-	-	-	1,036	6,179	7
Nogob	Gerbo	Conflict	32	182	1	-	-	-	-	-	-	32	182	1
Nogob	Gerbo	Drought	2,160	12,990	11	-	-	-	-	-	-	2,160	12,990	11
Nogob	Segeg	Conflict	45	273	1	-	-	-	-	-	-	45	273	1
Nogob	Segeg	Drought	1,002	6,013	4	648	3,890	5	-	-	-	1,650	9,903	9
Nogob	Ayun	Conflict	50	300	1	-	-	-	-	-	-	50	300	1
Nogob	Ayun	Drought	-	-	-	1,400	8,398	5	-	-	-	1,400	8,398	5
Nogob	Hararey	Drought	-	-	-	525	3,153	5	-	-	-	525	3,153	5
Nogob	Horashagah	Drought	-	-	-	897	5,393	7	-	-	-	897	5,393	7
<b>Nogob Total</b>			<b>5,591</b>	<b>33,497</b>	<b>31</b>	<b>3,470</b>	<b>20,834</b>	<b>22</b>	<b>-</b>	<b>-</b>	<b>-</b>	<b>9,061</b>	<b>54,331</b>	<b>53</b>
Shabelle	Abaqaro	Other climate induced	-	-	-	-	-	-	2,081	12,494	26	2,081	12,494	26
Shabelle	Adadle	Drought	2,201	11,694	10	600	3,108	6	-	-	-	2,801	14,802	16
Shabelle	Adadle	Other climate induced	625	3,281	4	-	-	-	335	2,011	3	960	5,292	7
Shabelle	Berano	Drought	110	690	1	-	-	-	-	-	-	110	690	1
Shabelle	Berano	Other climate induced	-	-	-	-	-	-	555	3,331	2	555	3,331	2
Shabelle	Denan	Drought	815	4,759	5	650	3,721	5	-	-	-	1,465	8,480	10
Shabelle	East Imi	Drought	610	3,581	2	736	4,045	4	-	-	-	1,346	7,626	6
Shabelle	East Imi	Social tension	189	1,102	3	-	-	-	-	-	-	189	1,102	3
Shabelle	East Imi	Other climate induced	-	-	-	-	-	-	3,606	21,637	10	3,606	21,637	10
Shabelle	Elele	Drought	256	1,584	1	-	-	-	-	-	-	256	1,584	1
Shabelle	Gode	Drought	255	1,363	3	1,035	5,849	7	-	-	-	1,290	7,212	10
Shabelle	Gode	Other climate induced	150	803	2	-	-	-	-	-	-	150	803	2
Shabelle	Kelafo	Drought	531	2,914	3	345	1,985	2	-	-	-	876	4,899	5
Shabelle	Kelafo	Other climate induced	696	4,237	5	1,072	5,878	5	752	4,539	5	2,520	14,654	15
Shabelle	Mustahil	Other climate induced	6,083	36,512	5	-	-	-	-	-	-	6,083	36,512	5
Shabelle	Ferfer	Conflict	-	-	-	83	502	1	-	-	-	83	502	1
Shabelle	Ferfer	Other climate induced	-	-	-	-	-	-	235	1,439	3	235	1,439	3
<b>Shabelle Total</b>			<b>12,521</b>	<b>72,520</b>	<b>44</b>	<b>4,521</b>	<b>25,088</b>	<b>30</b>	<b>7,564</b>	<b>49</b>	<b>24,606</b>	<b>143,059</b>	<b>123</b>	
Siti	Afdem	Conflict	480	2,917	2	-	-	-	-	-	-	480	2,917	2
Siti	Afdem	Drought	1,304	7,918	5	-	-	-	-	-	-	1,304	7,918	5
Siti	Erer	Conflict	1,532	9,286	3	2,600	15,600	1	-	-	-	4,132	24,886	4
Siti	Erer	Drought	2,046	12,332	2	-	-	-	-	-	-	2,046	12,332	2
Siti	Gablalu	Conflict	165	989	1	-	-	-	-	-	-	165	989	1
Siti	Gablalu	Drought	2,149	12,912	3	-	-	-	-	-	-	2,149	12,912	3
Siti	Gablalu	Other climate induced	500	3,013	1	-	-	-	-	-	-	500	3,013	1
Siti	Gota-Biki	Drought	140	856	2	-	-	-	-	-	-	140	856	2
Siti	Gota-Biki	Social tension	340	2,031	1	-	-	-	-	-	-	340	2,031	1
Siti	Hadgalo	Drought	480	2,887	2	-	-	-	-	-	-	480	2,887	2
Siti	Hadgalo	Other climate induced	697	4,205	1	-	-	-	-	-	-	697	4,205	1
Siti	Miesso	Conflict	2,099	12,696	6	191	1,151	1	-	-	-	2,290	13,847	7
Siti	Miesso	Drought	1,580	9,656	6	-	-	-	-	-	-	1,580	9,656	6
Siti	Miesso	Other climate induced	130	816	1	-	-	-	-	-	-	130	816	1
Siti	Shinile	Drought	375	2,261	1	-	-	-	-	-	-	375	2,261	1
<b>Siti Total</b>			<b>14,017</b>	<b>84,775</b>	<b>37</b>	<b>2,791</b>	<b>16,751</b>	<b>2</b>	<b>-</b>	<b>-</b>	<b>-</b>	<b>16,808</b>	<b>101,526</b>	<b>39</b>
<b>Grand Total</b>			<b>168,713</b>	<b>1,003,279</b>	<b>435</b>	<b>44,996</b>	<b>266,616</b>	<b>177</b>	<b>8,632</b>	<b>51,789</b>	<b>53</b>	<b>222,341</b>	<b>1,321,684</b>	<b>665</b>

## SOUTH WEST ETHIOPIA PEOPLES

Zone	Woreda	Primary Cause	Sites Opened Before 2022			Sites Opened During 2022			Sites Opened During 2023			Total HH	Total Indiv	Total Sites
			HH	Indiv.	Sites	HH	Indiv.	Sites	HH	Indiv.	Sites			
Bench Sheko	Mizan Aman	Conflict	125	635	3	-	-	-	-	-	-	125	635	3
Bench Sheko	Debub Bench	Conflict	454	2,412	8	-	-	-	-	-	-	454	2,412	8
Bench Sheko	Gurafareda	Conflict	219	1,116	2	-	-	-	-	-	-	219	1,116	2
Bench Sheko	Shay Bench	Other climate induced	118	641	2	-	-	-	-	-	-	118	641	2
<b>Bench Sheko Total</b>			<b>916</b>	<b>4,804</b>	<b>15</b>	<b>-</b>	<b>-</b>	<b>-</b>	<b>-</b>	<b>-</b>	<b>-</b>	<b>916</b>	<b>4,804</b>	<b>15</b>
Dawro	Tercha Zuria	Conflict	44	197	2	-	-	-	-	-	-	44	197	2
<b>Dawro Total</b>			<b>44</b>	<b>197</b>	<b>2</b>	<b>-</b>	<b>-</b>	<b>-</b>	<b>-</b>	<b>-</b>	<b>-</b>	<b>44</b>	<b>197</b>	<b>2</b>
Keffa	Tulo	Other climate induced	20	115	1	-	-	-	-	-	-	20	115	1
Keffa	Decha	Other climate induced	112	603	2	-	-	-	-	-	-	112	603	2
<b>Keffa Total</b>			<b>132</b>	<b>718</b>	<b>3</b>	<b>-</b>	<b>-</b>	<b>-</b>	<b>-</b>	<b>-</b>	<b>-</b>	<b>132</b>	<b>718</b>	<b>3</b>
Konta	Ameya Town Administration	Other climate induced	358	1,853	4	-	-	-	-	-	-	358	1,853	4
Konta	Chida Town Administration	Other climate induced	98	477	3	-	-	-	-	-	-	98	477	3
Konta	Konta Koisha	Conflict	119	560	3	-	-	-	-	-	-	119	560	3
<b>Konta Total</b>			<b>575</b>	<b>2,890</b>	<b>10</b>	<b>-</b>	<b>-</b>	<b>-</b>	<b>-</b>	<b>-</b>	<b>-</b>	<b>575</b>	<b>2,890</b>	<b>10</b>
Mirab Omo	Maji	Conflict	174	929	2	-	-	-	-	-	-	174	929	2
<b>Mirab Omo Total</b>			<b>174</b>	<b>929</b>	<b>2</b>	<b>-</b>	<b>-</b>	<b>-</b>	<b>-</b>	<b>-</b>	<b>-</b>	<b>174</b>	<b>929</b>	<b>2</b>
Sheka	Anderacha	Conflict	228	1,110	1	-	-	-	-	-	-	228	1,110	1
Sheka	Yeki	Conflict	421	2,090	5	-	-	-	-	-	-	421	2,090	5
<b>Sheka Total</b>			<b>649</b>	<b>3,200</b>	<b>6</b>	<b>-</b>	<b>-</b>	<b>-</b>	<b>-</b>	<b>-</b>	<b>-</b>	<b>649</b>	<b>3,200</b>	<b>6</b>
<b>Grand Total</b>			<b>2,490</b>	<b>12,738</b>	<b>38</b>	<b>-</b>	<b>-</b>	<b>-</b>	<b>-</b>	<b>-</b>	<b>-</b>	<b>2,490</b>	<b>12,738</b>	<b>38</b>

## TIGRAY

Zone	Woreda	Primary Cause	Sites Opened Before 2022			Sites Opened During 2022			Sites Opened During 2023			Total HH	Total Indiv	Total Sites
			HH	Indiv.	Sites	HH	Indiv.	Sites	HH	Indiv.	Sites			
Central	Abiyadi	Conflict	14,880	57,145	9	1,536	6,275	3	-	-	-	16,416	63,420	12
Central	Adwa	Conflict	6,967	34,030	10	-	-	-	674	2,938	1	7,641	36,968	11
Central	Ahferom	Conflict	1,062	3,791	12	-	-	-	-	-	-	1,062	3,791	12
Central	Axum	Conflict	3,420	15,613	14	195	900	1	613	2,656	2	4,228	19,169	17
Central	Kola Temben	Conflict	3,631	10,766	14	-	-	-	343	1,048	1	3,974	11,814	15
Central	Tanqua Abergele	Conflict	1,174	2,695	8	-	-	-	-	-	-	1,174	2,695	8
Central	Laelay Maychew	Conflict	1,063	5,025	9	131	585	1	-	-	-	1,194	5,610	10
Central	Tahtay Maychew	Conflict	591	2,635	5	-	-	-	34	136	1	625	2,771	6
Central	Geter Adwa	Conflict	1,007	4,398	6	282	1,334	1	432	2,041	5	1,721	7,773	12
Central	Abergele yechila	Conflict	823	2,194	4	-	-	-	-	-	-	823	2,194	4
Central	Adiet	Conflict	3,236	14,276	6	105	342	1	-	-	-	3,341	14,618	7
Central	Ahse'a	Conflict	310	1,305	4	-	-	-	-	-	-	310	1,305	4
Central	Chila	Conflict	926	4,026	6	-	-	-	358	1,653	3	1,284	5,679	9
Central	Egela	Conflict	572	1,940	3	-	-	-	48	163	1	620	2,103	4
Central	Embasneiti	Conflict	1,522	5,827	10	-	-	-	-	-	-	1,522	5,827	10
Central	Endabatsahma	Conflict	1,975	9,078	9	-	-	-	95	406	1	2,070	9,484	10
Central	Enticho	Conflict	1,082	5,343	3	-	-	-	41	218	1	1,123	5,561	4
Central	Hahaile	Conflict	1,199	4,409	6	-	-	-	-	-	-	1,199	4,409	6
Central	Keih tekli	Conflict	805	3,265	6	-	-	-	371	1,374	3	1,176	4,639	9
Central	Rama Adi arbaete	Conflict	867	3,683	4	-	-	-	137	484	1	1,004	4,167	5
Central	Naedier	Conflict	690	2,777	7	-	-	-	763	1,725	1	1,453	4,502	8
Central	Maikinetal	Conflict	1,272	4,922	7	-	-	-	92	347	1	1,364	5,269	8
<b>Central Total</b>			<b>49,074</b>	<b>199,143</b>	<b>162</b>	<b>2,249</b>	<b>9,436</b>	<b>7</b>	<b>4,001</b>	<b>15,189</b>	<b>22</b>	<b>55,324</b>	<b>223,768</b>	<b>191</b>
Eastern	Adigrat Town	Conflict	13,598	59,295	9	314	1,747	1	-	-	-	13,912	61,042	10
Eastern	Ganta Afeshum	Conflict	1,337	5,433	11	192	798	1	-	-	-	1,529	6,231	12
Eastern	Gulomekeda	Conflict	4,946	23,721	4	-	-	-	-	-	-	4,946	23,721	4

Zone	Woreda	Primary Cause	Sites Opened Before 2022			Sites Opened During 2022			Sites Opened During 2023			Total HH	Total Indiv	Total Sites
			HH	Indiv.	Sites	HH	Indiv.	Sites	HH	Indiv.	Sites			
Eastern	Hawzen	Conflict	2,227	5,156	17	-	-	-	-	-	-	2,227	5,156	17
Eastern	Wukro Town	Conflict	3,708	14,403	7	-	-	-	-	-	-	3,708	14,403	7
Eastern	Erob	Conflict	4,128	20,640	2	-	-	-	-	-	-	4,128	20,640	2
Eastern	Kelete Awelallo	Conflict	569	1,529	9	23	50	1	-	-	-	592	1,579	10
Eastern	Atsbi	Conflict	366	1,267	9	-	-	-	43	105	1	409	1,372	10
Eastern	Bizet	Conflict	1,578	4,710	6	-	-	-	-	-	-	1,578	4,710	6
Eastern	Endaslasse Town	Conflict	408	1,089	4	-	-	-	-	-	-	408	1,089	4
Eastern	Fireweyni Town	Conflict	459	1,206	6	-	-	-	-	-	-	459	1,206	6
Eastern	Geralta	Conflict	284	639	4	-	-	-	-	-	-	284	639	4
Eastern	Hawzen Town	Conflict	648	2,028	4	-	-	-	-	-	-	648	2,028	4
Eastern	Sewha Saesi'e	Conflict	462	2,018	7	169	565	2	-	-	-	631	2,583	9
Eastern	Tsaeda Emba	Conflict	609	1,637	7	467	1,255	5	-	-	-	1,076	2,892	12
Eastern	Tsirae Wenberta	Conflict	692	1,907	7	51	128	2	-	-	-	743	2,035	9
Eastern	Edaga Hamus Town	Conflict	1,080	3,729	5	-	-	-	-	-	-	1,080	3,729	5
<b>Eastern Total</b>			<b>37,099</b>	<b>150,407</b>	<b>118</b>	<b>1,216</b>	<b>4,543</b>	<b>12</b>	<b>43</b>	<b>105</b>	<b>1</b>	<b>38,358</b>	<b>155,055</b>	<b>131</b>
Mekelle	Adihaki Sub City	Conflict	10,933	52,915	6	1,443	6,398	2	-	-	-	12,376	59,313	8
Mekelle	Ayder Sub City	Conflict	8,916	40,238	7	-	-	-	-	-	-	8,916	40,238	7
Mekelle	Hadnet Sub City	Conflict	8,666	28,342	9	-	-	-	-	-	-	8,666	28,342	9
Mekelle	Hawelti Sub City	Conflict	11,709	50,980	8	408	1,973	2	-	-	-	12,117	52,953	10
Mekelle	Kedamay Weyana Sub City	Conflict	7,197	28,396	7	352	1,323	1	-	-	-	7,549	29,719	8
Mekelle	Quiha Sub City	Conflict	3,109	10,445	3	267	827	1	-	-	-	3,376	11,272	4
Mekelle	Semen Sub City	Conflict	2,542	9,819	7	748	2,828	2	-	-	-	3,290	12,647	9
<b>Mekelle Total</b>			<b>53,072</b>	<b>221,135</b>	<b>47</b>	<b>3,218</b>	<b>13,349</b>	<b>8</b>	<b>-</b>	<b>-</b>	<b>-</b>	<b>56,290</b>	<b>234,484</b>	<b>55</b>
North Western	Tahtay Koraro	Conflict	807	3,489	9	-	-	-	59	228	1	866	3,717	10
North Western	Adi Daero	Conflict	1,317	5,551	10	-	-	-	1,038	5,001	3	2,355	10,552	13
North Western	Endabaguna	Conflict	6,056	25,708	7	521	2,058	1	-	-	-	6,577	27,766	8
North Western	Laelay Koraro	Conflict	941	3,725	7	880	3,800	2	-	-	-	1,821	7,525	9
North Western	Seyemti Adyabo	Conflict	982	4,173	6	-	-	-	-	-	-	982	4,173	6
North Western	Sheraro	Conflict	5,502	24,421	20	1,470	5,100	5	1,203	5,100	3	8,175	34,621	28
North Western	Shire	Conflict	25,850	111,128	23	4,791	22,924	4	5,965	27,996	5	36,606	162,048	32
North Western	Tsimbla	Conflict	489	1,916	4	-	-	-	-	-	-	489	1,916	4
North Western	Zana	Conflict	3,095	12,468	4	-	-	-	493	1,991	1	3,588	14,459	5
North Western	Maekel Adiyabo	Conflict	512	2,070	5	-	-	-	384	1,293	1	896	3,363	6
North Western	Asgede	Conflict	9,411	37,704	12	-	-	-	78	244	1	9,489	37,948	13
North Western	Tahtay Adiyabo	Conflict	298	1,430	4	559	1,867	1	861	4,252	1	1,718	7,549	6
<b>North Western Total</b>			<b>55,260</b>	<b>233,783</b>	<b>111</b>	<b>8,221</b>	<b>35,749</b>	<b>13</b>	<b>10,081</b>	<b>46,105</b>	<b>16</b>	<b>73,562</b>	<b>315,637</b>	<b>140</b>
South Eastern	Enderta	Conflict	2,940	7,180	14	-	-	-	-	-	-	2,940	7,180	14
South Eastern	Enderta	Social tension	1,757	7,162	6	-	-	-	-	-	-	1,757	7,162	6
South Eastern	Adigudom	Conflict	866	3,907	6	-	-	-	-	-	-	866	3,907	6
South Eastern	Degua Tembien	Conflict	1,264	3,259	7	61	163	1	-	-	-	1,325	3,422	8
South Eastern	Hagereselam	Conflict	552	1,629	6	-	-	-	-	-	-	552	1,629	6
South Eastern	Hintalo	Conflict	1,269	3,068	8	196	402	3	-	-	-	1,465	3,470	11
South Eastern	Samre	Conflict	1,130	3,633	8	-	-	-	-	-	-	1,130	3,633	8
South Eastern	Seharti	Conflict	698	2,167	8	-	-	-	-	-	-	698	2,167	8
South Eastern	Wejerat	Conflict	624	1,181	4	202	452	2	-	-	-	826	1,633	6
<b>South Eastern Total</b>			<b>11,100</b>	<b>33,186</b>	<b>67</b>	<b>459</b>	<b>1,017</b>	<b>6</b>	<b>-</b>	<b>-</b>	<b>-</b>	<b>11,559</b>	<b>34,203</b>	<b>73</b>
Southern	Bora	Conflict	407	823	2	41	102	2	-	-	-	448	925	4
Southern	Endamehoni	Conflict	2,475	7,642	9	335	1,675	1	-	-	-	2,810	9,317	10
Southern	Maychew	Conflict	3,600	12,062	4	152	433	1	123	277	1	3,875	12,772	6
Southern	Raya Azebo	Conflict	1,826	5,345	10	-	-	-	-	-	-	1,826	5,345	10
Southern	Imba Alaje	Conflict	861	3,169	12	-	-	-	-	-	-	861	3,169	12
Southern	Selewa	Conflict	290	842	1	223	426	4	-	-	-	513	1,268	5
Southern	Mekoni Town	Conflict	4,551	24,463	2	304	894	2	-	-	-	4,855	25,357	4
Southern	Neksege	Conflict	-	-	-	187	498	2	-	-	-	187	498	2
<b>Southern Total</b>			<b>14,010</b>	<b>54,346</b>	<b>40</b>	<b>1,242</b>	<b>4,028</b>	<b>12</b>	<b>123</b>	<b>277</b>	<b>1</b>	<b>15,375</b>	<b>58,651</b>	<b>53</b>
<b>Grand Total</b>			<b>219,615</b>	<b>892,000</b>	<b>545</b>	<b>16,605</b>	<b>68,122</b>	<b>58</b>	<b>14,248</b>	<b>61,676</b>	<b>40</b>	<b>250,468</b>	<b>1,021,798</b>	<b>643</b>

## GRAND TOTAL

Region	Sites Opened Before 2022			Sites Opened During 2022			Sites Opened During 2023			Total HH	Total Indiv	Total Sites
	HH	Indiv.	Sites	HH	Indiv.	Sites	HH	Indiv.	Sites			
Afar	7,286	43,813	44	8,805	49,091	26	595	3,672	5	16,686	96,576	75
Amhara	83,953	359,831	620	15,188	55,192	52	5,246	21,782	54	104,387	436,805	726
Benishangul Gumz	20,627	108,846	70	3,220	15,785	12	-	-	-	23,847	124,631	82
Dire Dawa	-	-	-	-	-	-	-	-	-	-	-	-
Gambela	3,945	20,806	10	4,700	23,698	7	-	-	-	8,645	44,504	17
Harari	667	3,037	9	-	-	-	-	-	-	667	3,037	9
Oromia	114,108	607,583	498	69,423	378,472	206	13,481	78,445	62	197,012	1,064,500	766
Sidama	7,130	40,705	57	1,161	7,433	6	-	-	-	8,291	48,138	63
SNNP	33,944	188,216	266	3,628	22,675	41	77	487	2	37,649	211,378	309
Somali	168,713	1,003,279	435	44,996	266,616	177	8,632	51,789	53	222,341	1,321,684	665
South West Ethiopia Peoples	2,490	12,738	38	-	-	-	-	-	-	2,490	12,738	38
Tigray	219,615	892,000	545	16,605	68,122	58	14,248	61,676	40	250,468	1,021,798	643
<b>Grand Total</b>	<b>662,478</b>	<b>3,280,854</b>	<b>2,592</b>	<b>1,67,726</b>	<b>887,084</b>	<b>585</b>	<b>42,279</b>	<b>217,851</b>	<b>216</b>	<b>872,483</b>	<b>4,385,789</b>	<b>3,393</b>

## 2.2 SUMMARY TABLES OF RETURN (VAS) - ZONAL AND WOREDA LEVEL

### AFAR

Zone	Woreda	Returning IDPs		Host/Receiving Community		Total HH	Total Individuals	Total Assessed Villages
		HH	Individuals	HH	Individuals			
Awsi (Zone 1)	Aysaita	60	372	-	-	60	372	1
Awsi (Zone 1)	Chifra	2,895	17,010	-	-	2,895	17,010	27
Awsi (Zone 1)	Adaa'r	550	3,316	-	-	550	3,316	2
<b>Awsi (Zone 1) Total</b>		<b>3,505</b>	<b>20,698</b>	<b>-</b>	<b>-</b>	<b>3,505</b>	<b>20,698</b>	<b>30</b>
Fenti (Zone 4)	Awra	1,575	9,218	-	-	1,575	9,218	11
Fenti (Zone 4)	Gulina	2,830	16,953	-	-	2,830	16,953	20
Fenti (Zone 4)	Yalo	2,474	14,943	-	-	2,474	14,943	13
Fenti (Zone 4)	Ewa	1,767	10,764	-	-	1,767	10,764	15
<b>Fenti (Zone 4) Total</b>		<b>8,646</b>	<b>51,878</b>	<b>-</b>	<b>-</b>	<b>8,646</b>	<b>51,878</b>	<b>59</b>
Gabi (Zone 3)	Amibara	139	838	-	-	139	838	1
<b>Gabi (Zone 3) Total</b>		<b>139</b>	<b>838</b>	<b>-</b>	<b>-</b>	<b>139</b>	<b>838</b>	<b>1</b>
Hari (Zone 5)	Hadelela	984	5,814	-	-	984	5,814	5
Hari (Zone 5)	Telalak	100	585	-	-	100	585	2
<b>Hari (Zone 5) Total</b>		<b>1,084</b>	<b>6,399</b>	<b>-</b>	<b>-</b>	<b>1,084</b>	<b>6,399</b>	<b>7</b>
Kilbati (Zone 2)	Ab Ala	3,435	20,377	-	-	3,435	20,377	20
Kilbati (Zone 2)	Erebtii	430	2,699	-	-	430	2,699	4
Kilbati (Zone 2)	Berahile	6,352	37,370	-	-	6,352	37,370	30
Kilbati (Zone 2)	Koneba	5,496	32,924	-	-	5,496	32,924	27
Kilbati (Zone 2)	Dalul	2,184	12,943	-	-	2,184	12,943	10
Kilbati (Zone 2)	Megale	1,500	8,842	-	-	1,500	8,842	5
<b>Kilbati (Zone 2) Total</b>		<b>19,397</b>	<b>115,155</b>	<b>-</b>	<b>-</b>	<b>19,397</b>	<b>115,155</b>	<b>96</b>
<b>Grand Total</b>		<b>32,771</b>	<b>194,968</b>	<b>-</b>	<b>-</b>	<b>32,771</b>	<b>194,968</b>	<b>193</b>

## AMHARA

Zone	Woreda	Returning IDPs		Host/Receiving Community		Total HH	Total Individuals	Total Assessed Villages
		HH	Individuals	HH	Individuals			
AwilAgew	Zigem	1,353	7,080	-	-	1,353	7,080	2
<b>AwilAgew Total</b>		<b>1,353</b>	<b>7,080</b>	<b>-</b>	<b>-</b>	<b>1,353</b>	<b>7,080</b>	<b>2</b>
Central Gonder	Aykel City Administration	1,850	8,707	10,900	55,459	12,750	64,166	2
<b>Central Gonder Total</b>		<b>1,850</b>	<b>8,707</b>	<b>10,900</b>	<b>55,459</b>	<b>12,750</b>	<b>64,166</b>	<b>2</b>
North Gonder	Debark	569	2,372	-	-	569	2,372	4
North Gonder	Addi Arekay	10,040	47,624	2,195	10,537	12,235	58,161	16
North Gonder	Dabat	660	3,067	-	-	660	3,067	4
<b>North Gonder Total</b>		<b>11,269</b>	<b>53,063</b>	<b>2,195</b>	<b>10,537</b>	<b>13,464</b>	<b>63,600</b>	<b>24</b>
North Shewa (R3)	Shoa Robit City Administration	9,965	43,668	6,903	28,729	16,868	72,397	37
North Shewa (R3)	Eferatana Gidem	4,470	19,266	1,603	6,783	6,073	26,049	28
North Shewa (R3)	Ataye City Administration	6,250	22,918	2,445	8,765	8,695	31,683	32
North Shewa (R3)	Kewet	5,035	23,330	143	636	5,178	23,966	20
North Shewa (R3)	Antsokiya	2,315	10,599	775	3,665	3,090	14,264	13
North Shewa (R3)	Menz Gera Midir	9,306	41,644	755	3,138	10,061	44,782	32
North Shewa (R3)	Tarema Ber	4,880	20,968	543	2,458	5,423	23,426	29
North Shewa (R3)	Menz Keya Gabriel	2,268	11,163	330	1,629	2,598	12,792	12
North Shewa (R3)	Mojan Wedera	8,613	37,608	714	3,517	9,327	41,125	38
North Shewa (R3)	Menz Mama Midir	10,618	44,070	262	571	10,880	44,641	60
North Shewa (R3)	Mehal Meda City Administration	6,338	25,972	213	389	6,551	26,361	26
<b>North Shewa (R3) Total</b>		<b>70,058</b>	<b>301,206</b>	<b>14,686</b>	<b>60,280</b>	<b>84,744</b>	<b>361,486</b>	<b>327</b>
North Wollo	Gidan	5,349	18,411	2,849	12,439	8,198	30,850	19
North Wollo	Guba Lafto	12,553	51,415	8,263	33,731	20,816	85,146	29
North Wollo	Raya Kobo	20,419	81,803	4,785	19,626	25,204	101,429	43
North Wollo	Lasta	5,177	19,841	2,451	11,029	7,628	30,870	11
North Wollo	Habru	18,608	74,356	7,786	28,681	26,394	103,037	34
North Wollo	Alibela City Administration	4,468	14,577	3,309	14,513	7,777	29,090	10
North Wollo	Meket	3,488	13,947	557	2,017	4,045	15,964	14
North Wollo	Wadla	8,606	35,858	2,112	9,409	10,718	45,267	19
North Wollo	Kobo	9,032	34,864	7,392	22,580	16,424	57,444	16
North Wollo	Woldiya City Administration	10,494	41,785	23,237	75,415	33,731	117,200	28
North Wollo	Meresa City Administration	8,655	34,800	5,866	29,788	14,521	64,588	14
North Wollo	Filakit City Administration	3,690	17,132	1,998	6,060	5,688	23,192	4
North Wollo	Gazo	2,055	7,483	875	3,522	2,930	11,005	7
North Wollo	Gashena City Administration	446	1,829	112	446	558	2,275	1
North Wollo	Angot	2,671	11,134	2,188	8,591	4,859	19,725	11
North Wollo	Bugna	1,328	4,917	1,782	5,325	3,110	10,242	6
<b>North Wollo Total</b>		<b>117,039</b>	<b>464,152</b>	<b>75,562</b>	<b>283,172</b>	<b>192,601</b>	<b>747,324</b>	<b>266</b>
Oromia	Artuma Fursi	2,180	10,215	11,420	38,353	13,600	48,568	12
Oromia	Kemissie City Administration	1,393	4,048	10,506	49,397	11,899	53,445	19
Oromia	Jille Timuga	2,233	12,365	12,207	43,217	14,440	55,582	12
Oromia	Dewa Cheffa	6,435	21,226	4,872	23,667	11,307	44,893	26
Oromia	Bati	3,279	14,585	1,358	6,649	4,637	21,234	13
<b>Oromia Total</b>		<b>15,520</b>	<b>62,439</b>	<b>40,363</b>	<b>161,283</b>	<b>55,883</b>	<b>223,722</b>	<b>82</b>
South Gonder	Lay Gayint	10,694	48,841	1,549	7,350	12,243	56,191	31
South Gonder	Farta	6,213	28,157	239	1,312	6,452	29,469	16
South Gonder	Guna Begemedir	5,045	24,013	908	4,557	5,953	28,570	19
South Gonder	Nefas Mewicha City Administration	7,279	31,753	2,015	8,022	9,294	39,775	12
<b>South Gonder Total</b>		<b>29,231</b>	<b>132,764</b>	<b>4,711</b>	<b>21,241</b>	<b>33,942</b>	<b>154,005</b>	<b>78</b>
South Wollo	Kalu	8,731	40,616	5,966	26,589	14,697	67,205	31
South Wollo	Tenta	5,100	20,933	631	1,181	5,731	22,114	28

Zone	Woreda	Returning IDPs		Host/Receiving Community		Total HH	Total Individuals	Total Assessed Villages
		HH	Individuals	HH	Individuals			
South Wollo	Were Ilu	5,729	26,022	5,362	23,293	11,091	49,315	27
South Wollo	Legambo	1,656	6,474	619	3,055	2,275	9,529	14
South Wollo	Jama	5,378	24,946	2,798	12,608	8,176	37,554	25
South Wollo	Were Ilu City Administration	1,171	5,086	570	2,382	1,741	7,468	4
South Wollo	Thehulederie	9,554	38,215	2,950	14,485	12,504	52,700	41
South Wollo	Worebabu	5,071	22,722	1,195	6,146	6,266	28,868	22
South Wollo	Dessie Zuria	4,569	18,759	1,025	5,146	5,594	23,905	17
South Wollo	Hayeq City Administration	2,821	11,512	774	3,228	3,595	14,740	5
South Wollo	Kutaber	4,425	17,947	3,112	14,571	7,537	32,518	14
South Wollo	Kelela	2,487	11,849	621	3,026	3,108	14,875	26
South Wollo	Ambasel	8,198	28,771	774	1,722	8,972	30,493	16
South Wollo	Delanta	11,133	34,698	647	1,577	11,780	36,275	25
South Wollo	Akesta City Administration	2,519	9,399	696	3,480	3,215	12,879	10
South Wollo	Harbu City Administration	2,594	12,278	1,398	6,702	3,992	18,980	6
South Wollo	Tulu Awuliya City Administration	2,717	10,719	1,671	8,455	4,388	19,174	20
<b>South Wollo Total</b>		<b>83,853</b>	<b>340,946</b>	<b>30,809</b>	<b>137,646</b>	<b>114,662</b>	<b>478,592</b>	<b>331</b>
Wag Himra	Dehana	2,881	11,965	1,348	6,937	4,229	18,902	11
Wag Himra	Sekota	3,653	19,412	-	-	3,653	19,412	16
Wag Himra	Sekota City Administration	1,359	5,584	867	3,217	2,226	8,801	7
Wag Himra	Gaz Gibla	530	2,654	-	-	530	2,654	5
Wag Himra	Ziqala	590	2,987	-	-	590	2,987	3
Wag Himra	Abergele	1,700	7,269	-	-	1,700	7,269	4
<b>Wag Himra Total</b>		<b>10,713</b>	<b>49,871</b>	<b>2,215</b>	<b>10,154</b>	<b>12,928</b>	<b>60,025</b>	<b>46</b>
West Gojam	Jabi Tehnan	61	353	-	-	61	353	1
<b>West Gojam Total</b>		<b>61</b>	<b>353</b>	<b>-</b>	<b>-</b>	<b>61</b>	<b>353</b>	<b>1</b>
West Gonder	Adagn Ager Chako	438	1,493	-	-	438	1,493	1
<b>West Gonder Total</b>		<b>438</b>	<b>1,493</b>	<b>-</b>	<b>-</b>	<b>438</b>	<b>1,493</b>	<b>1</b>
<b>Grand Total</b>		<b>341,385</b>	<b>1,422,074</b>	<b>181,441</b>	<b>739,772</b>	<b>522,826</b>	<b>2,161,846</b>	<b>1,160</b>

## BENISHANGUL GUMZ

Zone	Woreda	Returning IDPs		Host/Receiving Community		Other Population		Total HH	Total Individuals	Total Assessed Villages
		HH	Individuals	HH	Individuals	HH	Individuals			
Asosa	Bilidigilu	745	3,651	-	-	-	-	745	3,651	8
Asosa	Sherkole	439	2,150	-	-	-	-	439	2,150	5
<b>Asosa Total</b>		<b>1,184</b>	<b>5,801</b>	<b>-</b>	<b>-</b>	<b>-</b>	<b>-</b>	<b>1,184</b>	<b>5,801</b>	<b>13</b>
Metekel	Mandura	1,915	10,257	75	337	18	74	2,008	10,668	18
Metekel	Dangura	5,907	25,374	-	-	-	-	5,907	25,374	35
Metekel	Pawe Special	1,534	6,944	-	-	-	-	1,534	6,944	5
Metekel	Gilgel Bales Town Administration	712	3,598	2,063	10,340	-	-	2,775	13,938	7
Metekel	Dibat	3,349	17,747	300	1,500	-	-	3,649	19,247	13
Metekel	Bulen	753	3,815	-	-	-	-	753	3,815	2
<b>Metekel Total</b>		<b>14,170</b>	<b>67,735</b>	<b>2,438</b>	<b>12,177</b>	<b>18</b>	<b>74</b>	<b>16,626</b>	<b>79,986</b>	<b>80</b>
<b>Grand Total</b>		<b>15,354</b>	<b>73,536</b>	<b>2,438</b>	<b>12,177</b>	<b>18</b>	<b>74</b>	<b>17,810</b>	<b>85,787</b>	<b>93</b>



## GAMBELA

Zone	Woreda	Returning IDPs		Host/Receiving Community		Total HH	Total Individuals	Total Assessed Villages
		HH	Individuals	HH	Individuals			
Agnuak	Jore	1,378	6,919	-	-	1,378	6,919	1
Agnuak	Gambella Zuria	379	2,016	877	4,487	1,256	6,503	6
Agnuak	Gog	224	1,184	286	1,429	510	2,613	4
Agnuak	Abobo	50	261	150	705	200	966	1
<b>Agnuak Total</b>		<b>2,031</b>	<b>10,380</b>	<b>1,313</b>	<b>6,621</b>	<b>3,344</b>	<b>17,001</b>	<b>12</b>
Itang Special Woreda	Itang	2,888	15,204	394	1,970	3,282	17,174	16
<b>Itang Special Woreda Total</b>		<b>2,888</b>	<b>15,204</b>	<b>394</b>	<b>1,970</b>	<b>3,282</b>	<b>17,174</b>	<b>16</b>
Majang	Godere	66	308	-	-	66	308	1
<b>Majang Total</b>		<b>66</b>	<b>308</b>	<b>-</b>	<b>-</b>	<b>66</b>	<b>308</b>	<b>1</b>
Nuer	Makuey	998	5,396	-	-	998	5,396	3
Nuer	Jikawo	904	4,984	-	-	904	4,984	2
Nuer	Lare	365	2,009	-	-	365	2,009	2
<b>Nuer Total</b>		<b>2,267</b>	<b>12,389</b>	<b>-</b>	<b>-</b>	<b>2,267</b>	<b>12,389</b>	<b>7</b>
<b>Grand Total</b>		<b>7,252</b>	<b>38,281</b>	<b>1,707</b>	<b>8,591</b>	<b>8,959</b>	<b>46,872</b>	<b>36</b>

## OROMIA

Zone	Woreda	Returning IDPs		Host/Receiving Community		Total HH	Total Individuals	Total Assessed Villages
		HH	Individuals	HH	Individuals			
East Bale	Dawe Kachen	155	844	488	2,630	643	3,474	3
East Bale	Lege Hida	1,861	10,647	1,228	6,678	3,089	17,325	7
East Bale	Rayitu	1,203	6,337	2,965	15,682	4,168	22,019	12
East Bale	Sewena	1,244	5,787	1,489	7,901	2,733	13,688	6
East Bale	Dawe Serer	3,185	16,078	2,529	13,346	5,714	29,424	8
<b>East Bale Total</b>		<b>7,648</b>	<b>39,693</b>	<b>8,699</b>	<b>46,237</b>	<b>16,347</b>	<b>85,930</b>	<b>36</b>
East Harerge	Midega Tola	1,358	6,786	-	-	1,358	6,786	15
<b>East Harerge Total</b>		<b>1,358</b>	<b>6,786</b>	<b>-</b>	<b>-</b>	<b>1,358</b>	<b>6,786</b>	<b>15</b>
East Wallaga	Gida Ayana	969	5,293	-	-	969	5,293	9
East Wallaga	Guto Gida	4,968	28,721	-	-	4,968	28,721	28
East Wallaga	Sasiga	610	2,871	-	-	610	2,871	2
<b>East Wallaga Total</b>		<b>6,547</b>	<b>36,885</b>	<b>-</b>	<b>-</b>	<b>6,547</b>	<b>36,885</b>	<b>39</b>
West Harerge	Mieso	97	485	-	-	97	485	1
<b>West Harerge Total</b>		<b>97</b>	<b>485</b>	<b>-</b>	<b>-</b>	<b>97</b>	<b>485</b>	<b>1</b>
West Wallaga	Gimbi	290	1,621	-	-	290	1,621	2
<b>West Wallaga Total</b>		<b>290</b>	<b>1,621</b>	<b>-</b>	<b>-</b>	<b>290</b>	<b>1,621</b>	<b>2</b>
<b>Grand Total</b>		<b>15,940</b>	<b>85,470</b>	<b>8,699</b>	<b>46,237</b>	<b>24,639</b>	<b>131,707</b>	<b>93</b>

## SIDAMA

Zone	Woreda	Returning IDPs		Host/Receiving Community		Total HH	Total Individuals	Total Assessed Villages
		HH	Individuals	HH	Individuals			
Hawassa Ketema Astedader	Tulla Sub-City	1,370	5,783	-	-	1,370	5,783	10
<b>Hawassa Ketema Astedader Total</b>		<b>1,370</b>	<b>5,783</b>	<b>-</b>	<b>-</b>	<b>1,370</b>	<b>5,783</b>	<b>10</b>
Zone I	Wondo Genet	1,066	4,405	-	-	1,066	4,405	4
<b>Zone I Total</b>		<b>1,066</b>	<b>4,405</b>	<b>-</b>	<b>-</b>	<b>1,066</b>	<b>4,405</b>	<b>4</b>
<b>Grand Total</b>		<b>2,436</b>	<b>10,188</b>	<b>-</b>	<b>-</b>	<b>2,436</b>	<b>10,188</b>	<b>14</b>

## SNNP

Zone	Woreda	Returning IDPs		Host/Receiving Community		Total HH	Total Individuals	Total Assessed Villages
		HH	Individuals	HH	Individuals			
Alle Special Woreda	Alle Special Woreda	813	5,683	131	790	944	6,473	8
<b>Alle Special Woreda Total</b>		<b>813</b>	<b>5,683</b>	<b>131</b>	<b>790</b>	<b>944</b>	<b>6,473</b>	<b>8</b>
Amaro Special Woreda	Amaro Special Woreda	999	7,446	-	-	999	7,446	4
<b>Amaro Special Woreda Total</b>		<b>999</b>	<b>7,446</b>	<b>-</b>	<b>-</b>	<b>999</b>	<b>7,446</b>	<b>4</b>
Basketo	Basketo SP Woreda	193	1,012	-	-	193	1,012	3
<b>Basketo Total</b>		<b>193</b>	<b>1,012</b>	<b>-</b>	<b>-</b>	<b>193</b>	<b>1,012</b>	<b>3</b>
Derashe Special Woreda	Derashe Special Woreda	3,054	20,144	-	-	3,054	20,144	7
<b>Derashe Special Woreda Total</b>		<b>3,054</b>	<b>20,144</b>	<b>-</b>	<b>-</b>	<b>3,054</b>	<b>20,144</b>	<b>7</b>
Gamo	Mirab Abaya	140	840	-	-	140	840	3
Gamo	Gacho Baba	20	131	250	1,500	270	1,631	1
<b>Gamo Total</b>		<b>160</b>	<b>971</b>	<b>250</b>	<b>1,500</b>	<b>410</b>	<b>2,471</b>	<b>4</b>
Gofa	Geze Gofa	52	338	300	1,800	352	2,138	2
Gofa	Uba Debretsehay	362	1,653	-	-	362	1,653	7
<b>Gofa Total</b>		<b>414</b>	<b>1,991</b>	<b>300</b>	<b>1,800</b>	<b>714</b>	<b>3,791</b>	<b>9</b>
Gurage	Mareko	977	5,505	4,477	25,865	5,454	31,370	18
Gurage	Misrak Meskan	1,054	5,060	4,269	21,929	5,323	26,989	10
Gurage	Cheha	21	124	120	650	141	774	1
<b>Gurage Total</b>		<b>2,052</b>	<b>10,689</b>	<b>8,866</b>	<b>48,444</b>	<b>10,918</b>	<b>59,133</b>	<b>29</b>
Hadiya	Misrak Badawacho	46	327	95	665	141	992	1
<b>Hadiya Total</b>		<b>46</b>	<b>327</b>	<b>95</b>	<b>665</b>	<b>141</b>	<b>992</b>	<b>1</b>
Konso	Segen Zuria	5,697	36,327	876	5,536	6,573	41,863	22
Konso	Karat Zuria	3,035	19,102	-	-	3,035	19,102	12
Konso	Kolme Cluster	123	1,276	-	-	123	1,276	1
<b>Konso Total</b>		<b>8,855</b>	<b>56,705</b>	<b>876</b>	<b>5,536</b>	<b>9,731</b>	<b>62,241</b>	<b>35</b>
Silti	Alichu Woriro	68	611	250	2,250	318	2,861	1
Silti	Sankura	398	2,030	-	-	398	2,030	3
<b>Silti Total</b>		<b>466</b>	<b>2,641</b>	<b>250</b>	<b>2,250</b>	<b>716</b>	<b>4,891</b>	<b>4</b>
South Omo	South Ari (Bako Gazer)	3,329	17,161	-	-	3,329	17,161	2
South Omo	Bena Tsemay	430	2,525	-	-	430	2,525	1
<b>South Omo Total</b>		<b>3,759</b>	<b>19,686</b>	<b>-</b>	<b>-</b>	<b>3,759</b>	<b>19,686</b>	<b>3</b>
<b>Grand Total</b>		<b>20,811</b>	<b>127,295</b>	<b>10,768</b>	<b>60,985</b>	<b>31,579</b>	<b>188,280</b>	<b>107</b>

## SOMALI

Zone	Woreda	Returning IDPs		Host/Receiving Community		Total HH	Total Individuals	Total Assessed Villages
		HH	Individuals	HH	Individuals			
Liben	Deka Seftu	180	1,075	-	-	180	1,075	3
Liben	Guradamole	292	1,898	80	400	372	2,298	8
<b>Liben Total</b>		<b>472</b>	<b>2,973</b>	<b>80</b>	<b>400</b>	<b>552</b>	<b>3,373</b>	<b>11</b>
<b>Grand Total</b>		<b>472</b>	<b>2,973</b>	<b>80</b>	<b>400</b>	<b>552</b>	<b>3,373</b>	<b>11</b>

## SOUTH WEST ETHIOPIA PEOPLES

Zone	Woreda	Returning IDPs		Host/Receiving Community		Total HH	Total Individuals	Total Assessed Villages
		HH	Individuals	HH	Individuals			
Bench Sheko	Debub Bench	1,865	9,555	-	-	1,865	9,555	9
Bench Sheko	Shay Bench	47	224	-	-	47	224	1
Bench Sheko	Gurafareda	3,290	17,816	-	-	3,290	17,816	73
<b>Bench Sheko Total</b>		<b>5,202</b>	<b>27,595</b>	<b>-</b>	<b>-</b>	<b>5,202</b>	<b>27,595</b>	<b>83</b>
Sheka	Yeki	21	126	-	-	21	126	1
<b>Sheka Total</b>		<b>21</b>	<b>126</b>	<b>-</b>	<b>-</b>	<b>21</b>	<b>126</b>	<b>1</b>
<b>Grand Total</b>		<b>5,223</b>	<b>27,721</b>	<b>-</b>	<b>-</b>	<b>5,223</b>	<b>27,721</b>	<b>84</b>

## TIGRAY

Zone	Woreda	Returning IDPs		Host/Receiving Community		Other Population		Total HH	Total Individuals	Total Assessed Villages
		HH	Individuals	HH	Individuals	HH	Individuals			
Central	Lalay Maychew	6,767	32,386	6,771	36,114	50	204	13,588	68,704	26
Central	Naedier	2,170	10,063	1,295	5,844	48	108	3,513	16,015	9
Central	Chila	4,988	23,688	3,597	17,210	-	-	8,585	40,898	13
Central	Axum	8,635	38,432	15,926	69,927	46	170	24,607	108,529	26
Central	Tahtay Maychew	6,378	29,970	4,230	20,252	17	85	10,625	50,307	17
Central	Adiet	3,075	14,974	2,494	11,192	47	540	5,616	26,706	11
Central	Abiyiadi	5,270	17,476	14,645	40,960	-	-	19,915	58,436	17
Central	Tanqua Abergele	864	3,468	3,360	15,563	-	-	4,224	19,031	11
Central	Kola Temben	1,933	7,386	11,320	54,462	-	-	13,253	61,848	24
Central	Abergele yechila	2,394	10,258	5,086	23,146	-	-	7,480	33,404	10
Central	Getar Adwa	6,090	29,969	1,950	9,379	34	124	8,074	39,473	18
Central	Rama Adi arbaete	1,261	5,915	478	2,372	25	86	1,764	8,373	4
Central	Egela	365	1,951	447	2,099	-	-	812	4,050	1
Central	Ahse'a	492	2,545	1,168	5,644	-	-	1,660	8,189	3
Central	Endabatsahma	71	381	974	5,027	-	-	1,045	5,408	1
Central	Adwa	7,019	31,942	7,708	29,128	104	393	14,831	61,463	17
Central	Enticho	599	2,678	284	1,185	27	103	910	3,966	3
Central	Hahaile	614	3,054	367	1,172	31	100	1,012	4,326	2
<b>Central Total</b>		<b>58,985</b>	<b>266,536</b>	<b>82,100</b>	<b>350,676</b>	<b>429</b>	<b>1,913</b>	<b>141,514</b>	<b>619,126</b>	<b>213</b>
Eastern	Erob	884	3,134	1,057	3,700	-	-	1,941	6,834	3
Eastern	Adigrat Town	10,237	43,779	19,962	86,945	-	-	30,199	131,032	30
Eastern	Ganta Afeshum	7,578	31,345	7,990	35,007	-	-	15,568	66,645	33
Eastern	Wukro Town	11,794	56,226	12,248	43,549	-	-	24,042	99,775	12
Eastern	Atsbi	2,785	11,611	3,809	16,266	-	-	6,594	28,382	12
Eastern	Tsirae Wenberta	4,033	18,488	6,405	28,837	51	107	10,489	47,432	18
Eastern	Hawzen	5,060	13,837	12,663	44,453	-	-	17,723	58,302	36
Eastern	Hawzen Town	3,517	13,360	5,177	17,474	-	-	8,694	30,837	11
Eastern	Bizet	1,938	8,686	995	4,368	-	-	2,933	13,138	6
Eastern	Tsaeda Emba	3,456	10,521	7,388	28,090	-	-	10,844	38,611	22
Eastern	Kelete Awelallo	4,413	17,036	10,900	50,427	26	58	15,339	67,521	26
Eastern	Sewha Saesi'e	9,733	40,706	3,257	13,033	10	52	13,000	54,479	38
Eastern	Fireweyni Town	621	1,901	3,168	13,844	-	-	3,789	15,745	5
Eastern	Edaga Hamus Town	5,517	24,741	1,839	7,460	-	-	7,356	32,258	4
Eastern	Endaslasse Town	1,112	3,607	1,754	8,352	-	-	2,866	12,459	4
Eastern	Gulomekeda	4,490	19,067	374	1,702	-	-	4,864	21,195	13
Eastern	Geralta	1,339	4,377	3,409	15,654	-	-	4,748	20,031	10

Zone	Woreda	Returning IDPs		Host/Receiving Community		Other Population		Total HH	Total Individuals	Total Assessed Villages
		HH	Individuals	HH	Individuals	HH	Individuals			
Eastern	Zalanbesa Town	1,746	6,802	398	1,320	-	-	2,144	8,122	4
<b>Eastern Total</b>		<b>80,253</b>	<b>329,224</b>	<b>102,793</b>	<b>420,481</b>	<b>87</b>	<b>217</b>	<b>183,133</b>	<b>752,798</b>	<b>287</b>
North Western	Seyemti Adiyabo	10,514	50,205	984	3,958	100	334	11,598	54,497	15
North Western	Shire	18,222	78,935	18,547	79,010	-	-	36,769	157,945	21
North Western	Adi Daero	13,889	64,864	598	2,629	85	273	14,572	67,766	24
North Western	Maekel Adiyabo	9,937	45,245	368	1,533	92	294	10,397	47,072	22
North Western	Sheraro	6,801	33,539	305	1,403	-	-	7,106	34,945	13
North Western	Asgede	4,587	20,571	1,333	6,054	75	264	5,995	26,889	10
North Western	Zana	3,656	16,527	3,695	16,518	34	126	7,385	33,171	8
North Western	Laelay Koraro	8,916	42,802	2,640	13,116	70	271	11,626	56,189	14
North Western	Tahtay Koraro	1,976	8,611	639	3,073	24	96	2,639	11,780	8
North Western	Endabaguna	1,597	7,201	3,567	16,810	33	146	5,197	24,157	7
North Western	Tsimbla	4,154	17,717	2,308	9,804	109	437	6,571	27,970	13
North Western	Tahtay Adiyabo	2,605	11,758	52	164	58	234	2,715	12,156	8
<b>North Western Total</b>		<b>86,854</b>	<b>397,975</b>	<b>35,036</b>	<b>154,072</b>	<b>680</b>	<b>2,475</b>	<b>122,570</b>	<b>554,537</b>	<b>163</b>
South Eastern	Samre	6,878	28,701	6,677	32,316	-	-	13,555	61,017	25
South Eastern	Hagereselam	1,072	4,011	2,540	14,538	-	-	3,612	18,619	5
South Eastern	Enderta	11,211	35,979	23,647	142,065	23	41	34,881	178,549	61
South Eastern	Seharti	6,620	29,606	3,519	15,846	-	-	10,139	45,452	23
South Eastern	Degua Tembien	5,165	21,465	5,005	21,241	-	-	10,170	42,706	21
South Eastern	Wejerat	3,131	12,245	5,823	23,197	-	-	8,954	35,453	15
South Eastern	Adigudom	1,225	3,891	3,635	16,296	-	-	4,860	20,402	19
South Eastern	Hintalo	5,879	24,315	9,662	39,111	-	-	15,541	63,434	23
<b>South Eastern Total</b>		<b>41,181</b>	<b>160,213</b>	<b>60,508</b>	<b>304,610</b>	<b>23</b>	<b>41</b>	<b>101,712</b>	<b>465,632</b>	<b>192</b>
Southern	Raya Azebo	3,454	10,672	5,478	24,010	-	-	8,932	34,834	9
Southern	Imba Alaje	13,245	47,175	11,820	45,913	-	-	25,065	93,124	26
Southern	Bora	4,594	19,081	3,214	14,056	-	-	7,808	33,139	12
Southern	Endamehoni	2,256	7,085	8,504	40,713	-	-	10,760	47,816	25
Southern	Neksege	727	2,232	1,931	6,725	-	-	2,658	8,957	5
Southern	Maychew	2,920	8,702	13,645	30,524	-	-	16,565	39,226	18
Southern	Mekoni Town	106	314	12,016	40,855	-	-	12,122	41,275	4
Southern	Selewa	1,654	7,088	2,894	11,035	-	-	4,548	18,130	9
<b>Southern Total</b>		<b>28,956</b>	<b>102,349</b>	<b>59,502</b>	<b>213,831</b>	<b>-</b>	<b>-</b>	<b>88,458</b>	<b>316,501</b>	<b>108</b>
<b>Grand Total</b>		<b>296,229</b>	<b>1,256,297</b>	<b>339,939</b>	<b>1,443,670</b>	<b>1,219</b>	<b>4,646</b>	<b>637,387</b>	<b>2,708,594</b>	<b>963</b>

## GRAND TOTAL

Zone	Returning IDPs		Host/Receiving Community		Other Population		Total HH	Total Individuals	Total Assessed Villages
	HH	Individuals	HH	Individuals	HH	Individuals			
Afar	32,771	194,968	-	-	-	-	32,771	194,968	193
Amhara	341,385	1,422,074	181,441	739,772	-	-	522,826	2,161,846	1,160
Benishangul Gumz	15,354	73,536	2,438	12,177	18	74	17,810	85,787	93
Dire Dawa	-	-	-	-	-	-	-	-	-
Gambela	7,252	38,281	1,707	8,591	-	-	8,959	46,872	36
Harari	-	-	-	-	-	-	-	-	-
Oromia	15,940	85,470	8,699	46,237	-	-	24,639	131,707	93
Sidama	2,436	10,188	-	-	-	-	2,436	10,188	14
SNNP	20,811	127,295	10,768	60,985	-	-	31,579	188,280	107
Somali	472	2,973	80	400	-	-	552	3,373	11
South West Ethiopia Peoples	5,223	27,721	-	-	-	-	5,223	27,721	84
Tigray	296,229	1,256,297	339,939	1,443,670	1,219	4,646	637,387	2,704,613	963
<b>Grand Total</b>	<b>737,873</b>	<b>3,238,803</b>	<b>545,072</b>	<b>2,311,832</b>	<b>1,237</b>	<b>4,720</b>	<b>1,284,182</b>	<b>5,555,355</b>	<b>2,754</b>



[dtmethiopia@iom.int](mailto:dtmethiopia@iom.int)



<https://dtm.iom.int/ethiopia>

