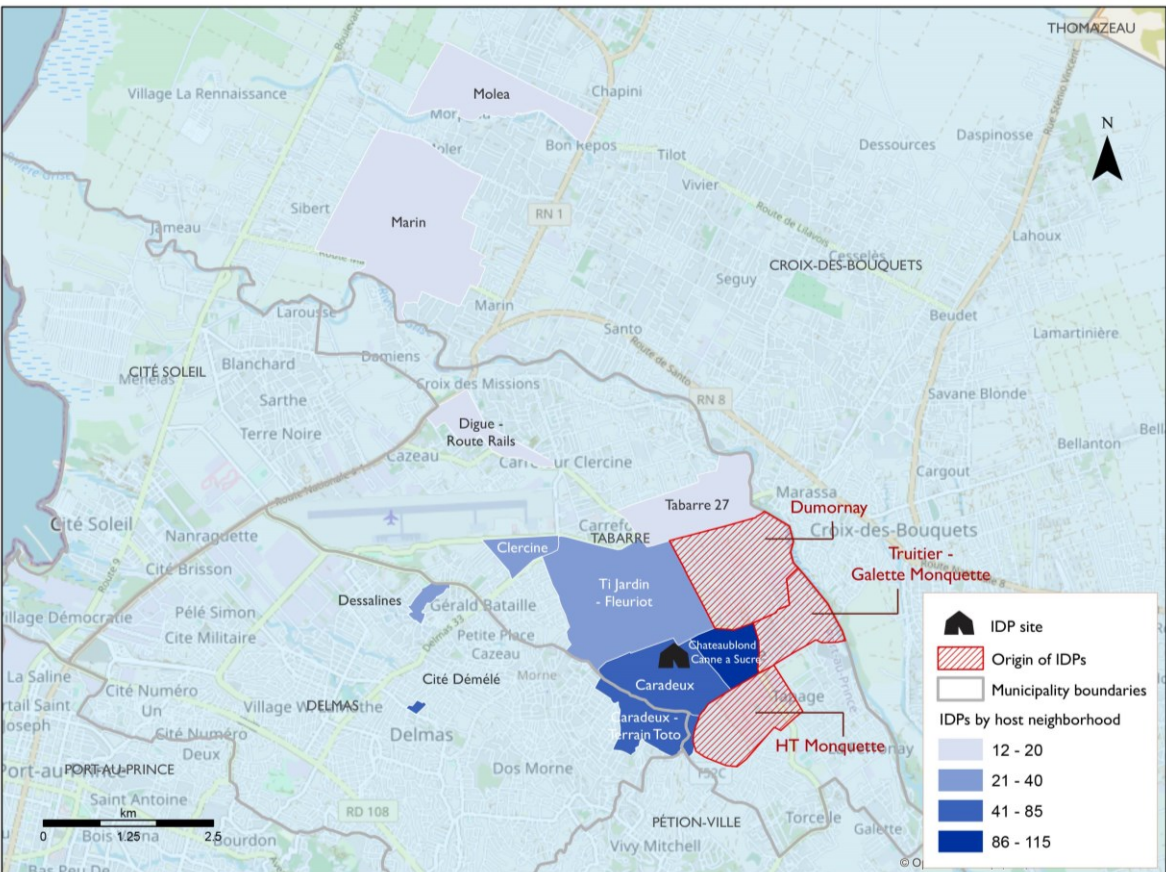


The objective of the Emergency Tracking Tool (ETT) is to collect information on large and sudden population movements as well as security and climatic emergencies. Information is collected through phone interviews with key informants and direct observation. This dashboard presents information on **population displacement which occurred from 23 to 27 July 2023 in the neighborhoods of Truitier, Dumornay, HT Monquette in the municipality of Tabarre (West district).**

Origins and host locations of displaced persons



Event Summary

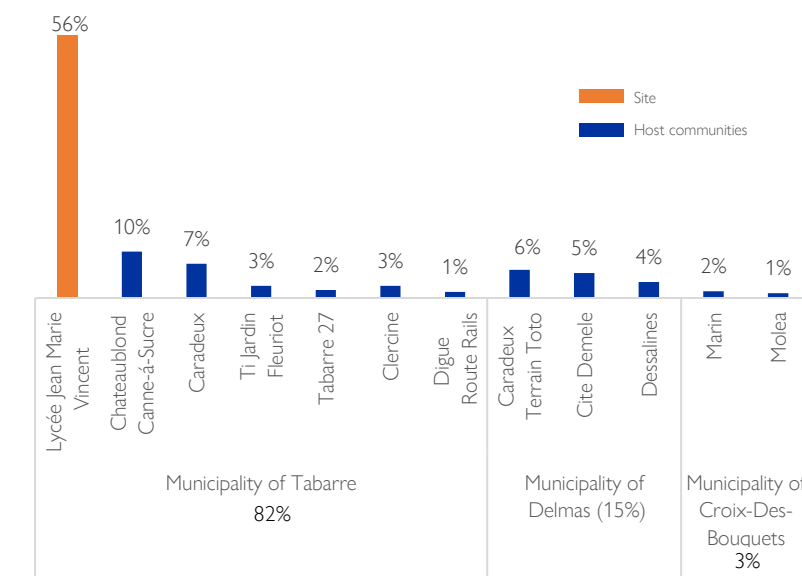
On 23rd July 2023, armed violence erupted in the neighborhoods of Truitier, Dumornay, HT Monquette located in the municipality of Tabarre (in the Metropolitan Area of Port-au-Prince, West District).

In addition to loss of life, this violence has also caused the displacement of approximately **1,148 individuals (457 households)** of which more than half (56%) took refuge in a site located in the same municipality of Tabarre (for more details, see the chart below and the table on page 2).

It should be noted that at the beginning of July 2023, armed violence had already broken out around the same area and displaced 375 people (see [ETT 19](#)).

457 Displaced households
1,148 Displaced individuals

Host locations of displaced persons





This map is for illustration purposes only. The depiction and use of boundaries, geographic names and related data shown on maps and included in this report are not warranted to be error free nor do they imply judgment on the legal status of any territory, or any endorsement or acceptance of such boundaries by IOM.

Details on host locations of displaced populations

Type of host location	Municipality	Municipality section	Neighborhood	Site name	Displaced households	Displaced individuals
Site	Tabarre	4ème section Bellevue	Caradeux	Lycée Jean Marie Vincent	339	652
Host community	Tabarre	4ème section Bellevue	Chateaublond / Canne - á- Sucre		23	115
Host community	Tabarre	4ème section Bellevue	Caradeux		25	85
Host community	Delmas	1ère section Saint martin	Caradeux - Terrain Toto		15	70
Host community	Delmas	1ère section Saint martin	Cite Demele		13	62
Host community	Delmas	1ère section Saint martin	Dessalines		10	40
Host community	Tabarre	4ème section Bellevue	Ti Jardin - Fleuriot		7	30
Host community	Tabarre	3ème section Bellevue	Clercine		7	30
Host community	Tabarre	3ème section Bellevue	Tabarre 27		5	20
Host community	Croix-Des-Bouquets	1ère section des Varreux	Marin		5	17
Host community	Tabarre	3ème section Bellevue	Digue - Route Rails		5	15
Host community	Croix-Des-Bouquets	1ère section des Varreux	Molea		3	12
					457	1,148

Methodology

	Assessment conducted in affected areas	✓
	Assessment conducted through phone interviews with key informants	✓

Limits

The information presented in this report may not represent all displacements caused by this incident. Indeed, it is possible that some displacements were not detected by key informants. In the case new displacement information caused by this incident is reported, updates can be made accordingly.

Furthermore, it is important to consider that figures are estimates and not data from a counting or registration of displaced households.