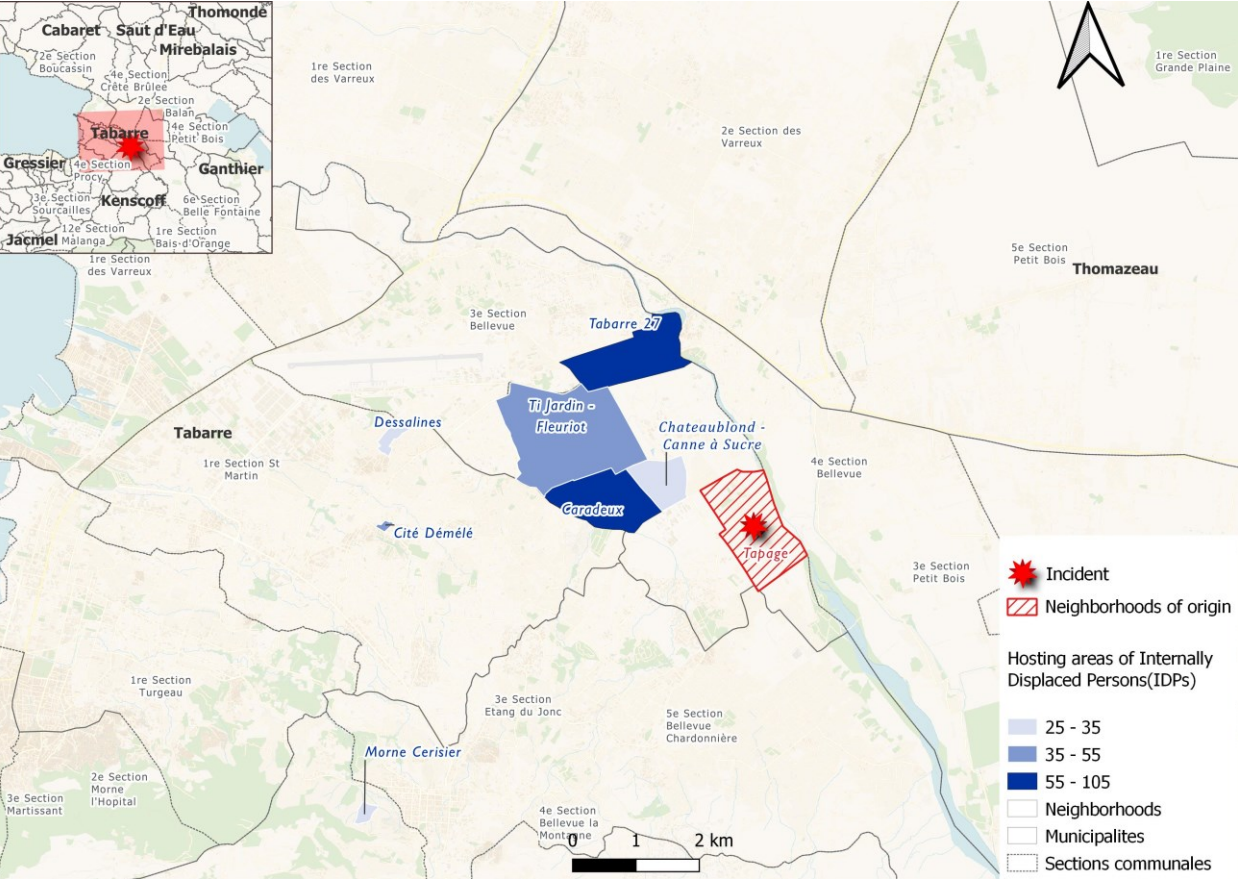


The objective of the Emergency Tracking Tool (ETT) is to collect information on large and sudden population movements as well as security and climatic emergencies. Information is collected through phone interviews with key informants and direct observation. This dashboard presents information on **population displacement which occurred on 9 July 2023 in the neighborhood of Tapage in the municipality of Tabarre (West district), following insecurity related violences.**

Origins and host locations of displaced persons



This map is for illustration purposes only. The depiction and use of boundaries, geographic names and related data shown on maps and included in this report are not warranted to be error free nor do they imply judgment on the legal status of any territory, or any endorsement or acceptance of such boundaries by IOM.

Event Summary

On 9th July 2023, insecurity related violences erupted in the neighborhood of Tapage located in the 4th municipality section of Bellevue, in the Tabarre Municipality (West District). In addition to loss of life, these attacks have also caused the displacement of approximately **375 individuals (75 households)** of which 71% took refuge in other neighborhoods of the same municipality of Tabarre ; 22% in the municipality of Delmas and 7% in the municipality of Pétion-Ville. It should be noted that all IDPs have taken refuge in host communities. (See the chart below for more details)



Host locations of displaced persons

